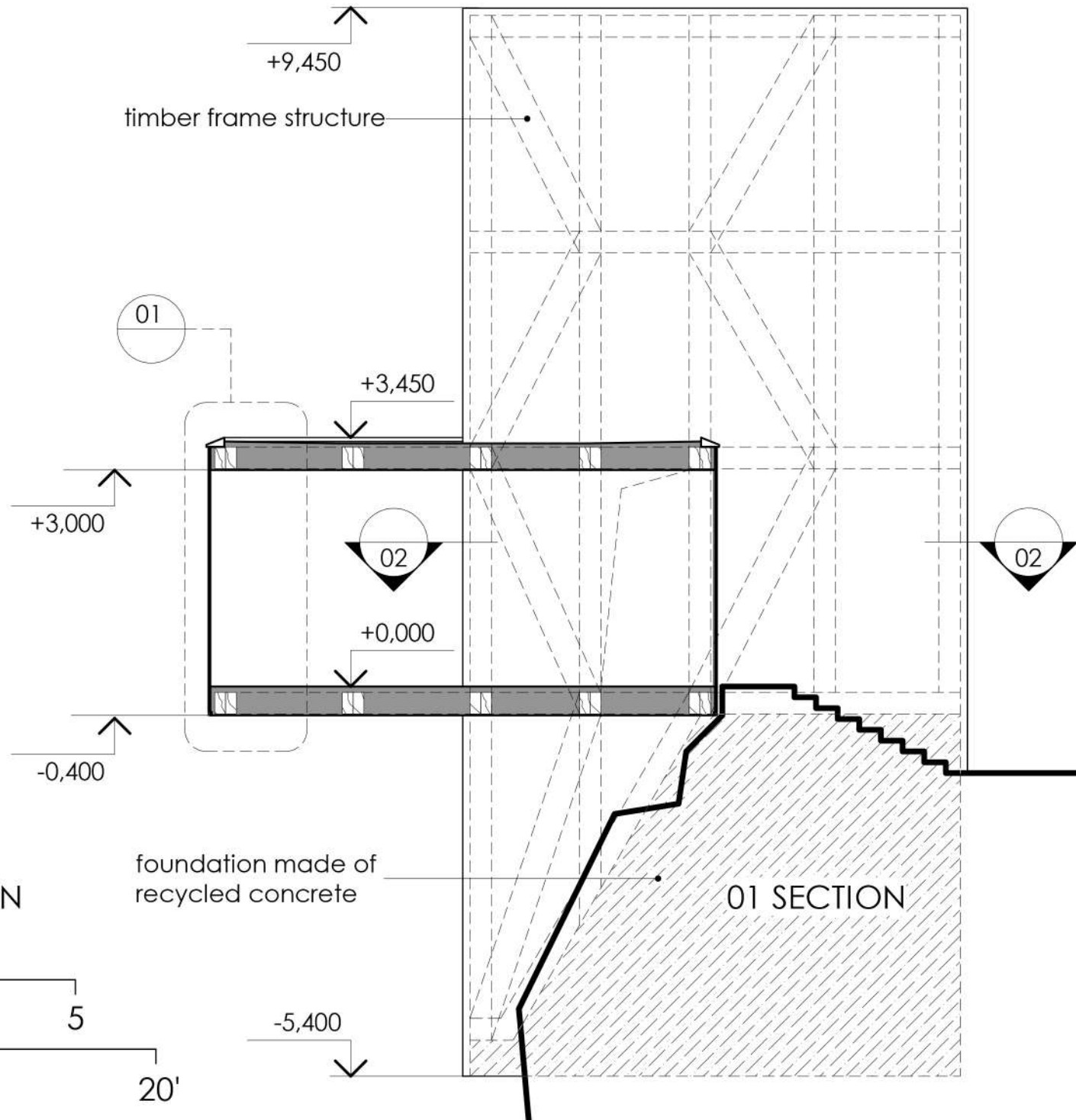
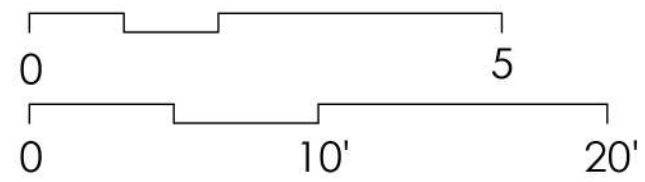
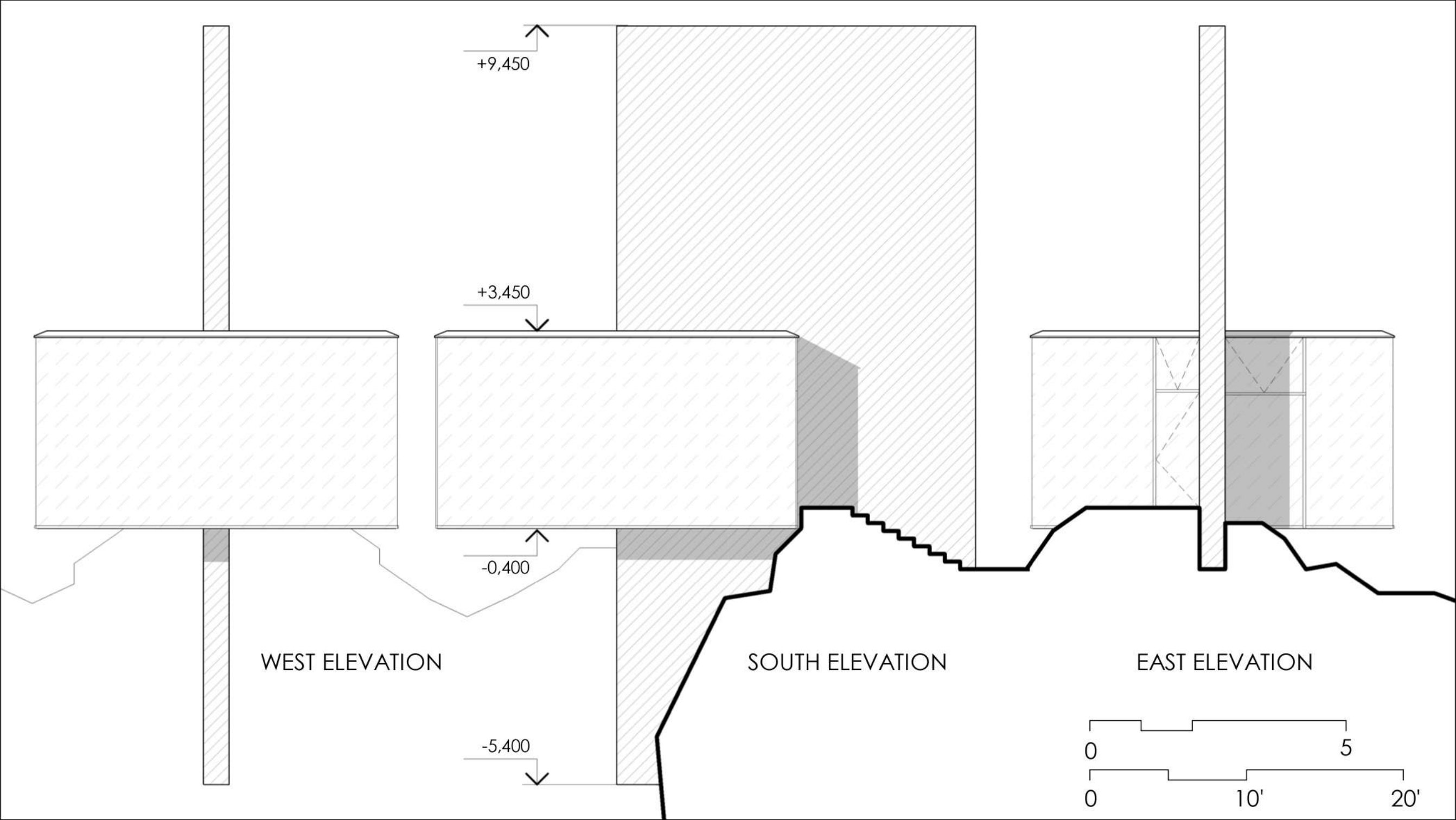


	sq.m.	sq.ft
1 entry	4.282	46.09
2 bed	7.178	77.26
3 liv.room	24.675	265.6
4 kitchen	6.015	64.75
5 bath	5.444	54.6
	47.594	508.3

FLOOR PLAN





+9,450

+3,450

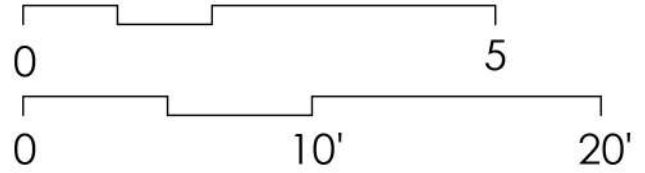
-0,400

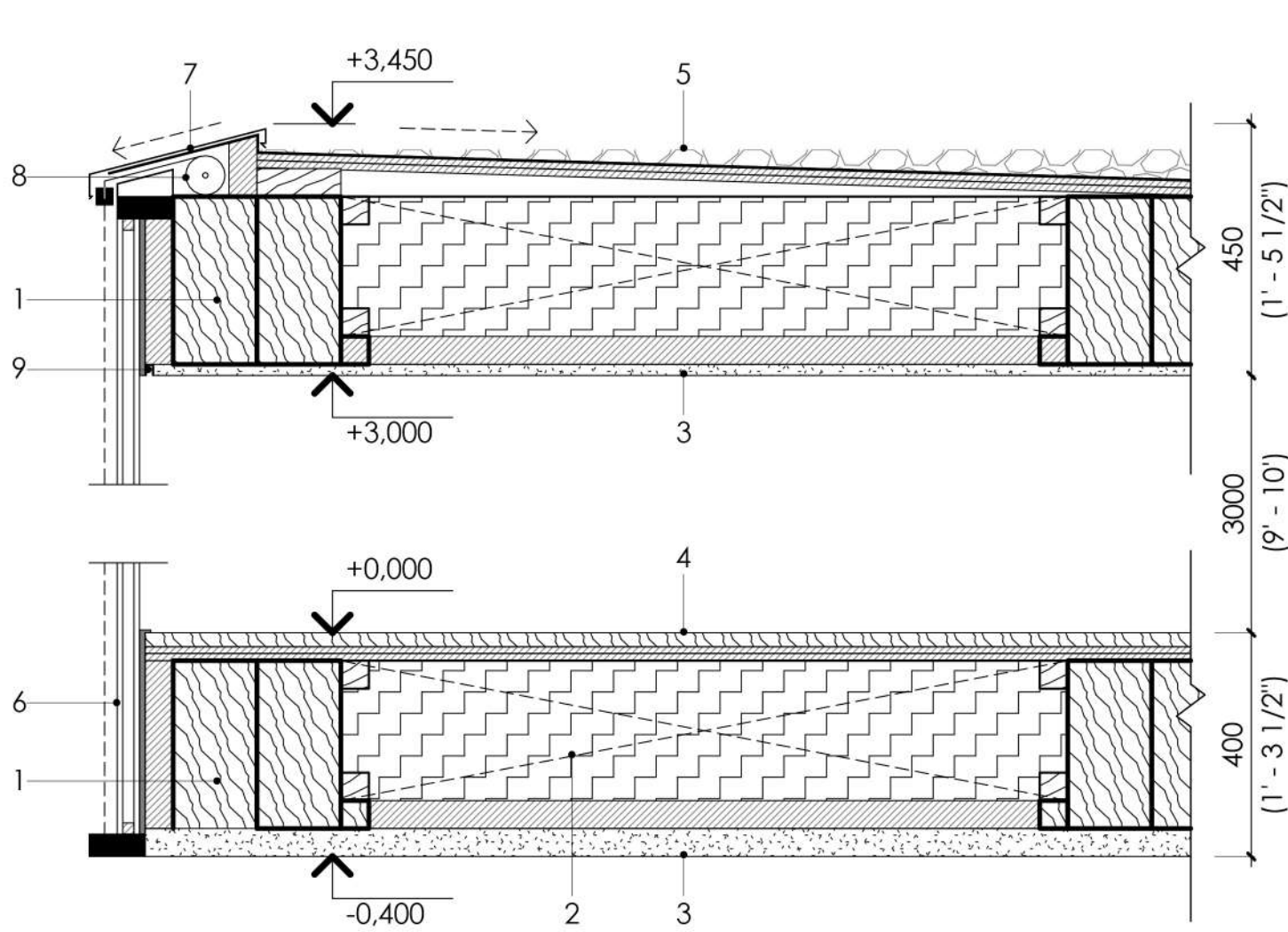
-5,400

WEST ELEVATION

SOUTH ELEVATION

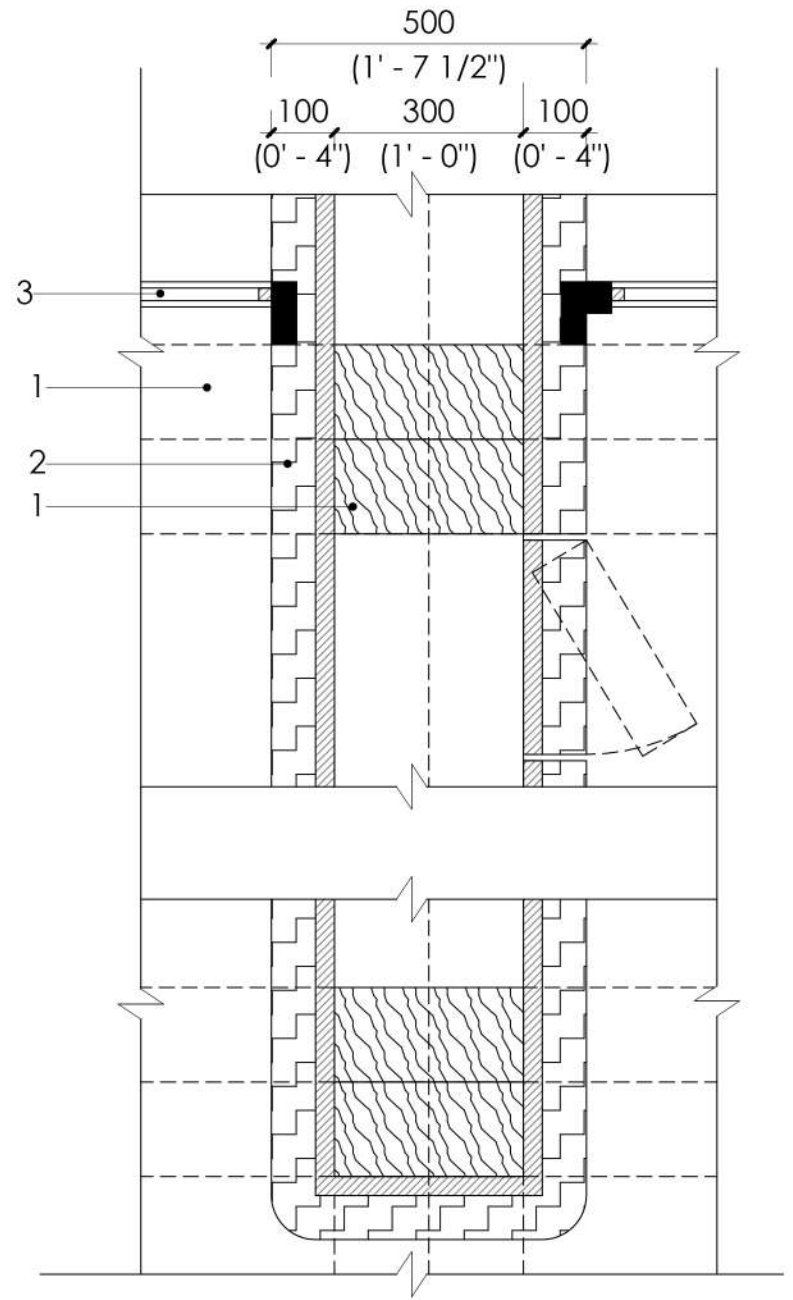
EAST ELEVATION





- 1 timber structure
- 2 straw panel
- 3 clay stucco
- 4 wooden flooring
- 5 pebble paving
- 6 glazing system
- 7 aluminium capping
- 8 built-in exterior automatic fabric blind with string guiding
- 9 recessed interior LED lighting

01 WALL SECTION DETAIL



- 1 timber structure
- 2 straw cladding
- 3 glazing system

02 SECTION











