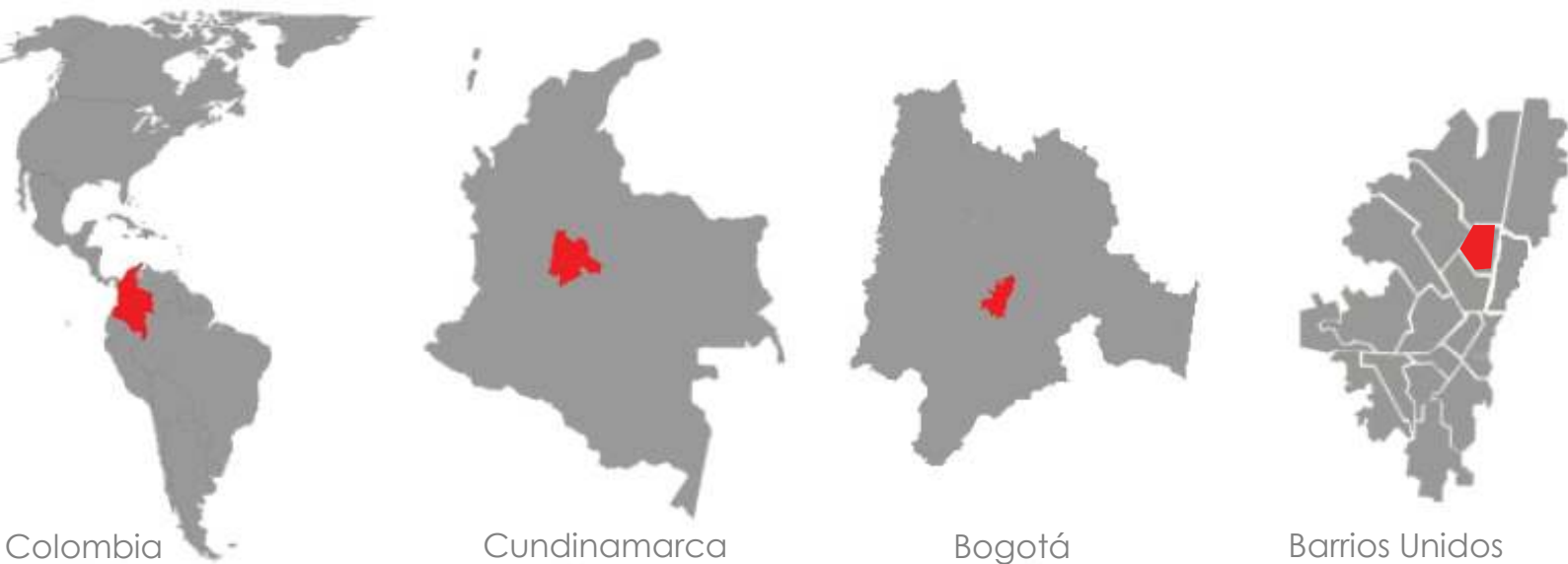


# COMPLEX PARKO 100



the project begins because we see the need of permanent circulation in the area, this lot is chosen because of its size and also hubicacion corresponding to a profile of high altitude, and also the desire to generate a large object with a leed certification, the lot is located centrally in the city of Bogota between two large circulations in the city and two commercially important axes that are the highway north and 100th Street, this lot corresponds to the Castellana neighborhood in sailing BARRIOS UNIDOS.

The central idea of the project and as a design concept was thinking of the pedestrian, the pedestrian can provide a route to pleasant, that shorter, the project then opens into the circulation allowing a connection between the two axes, and the proposed building half is in circulation for faster access even so enjoying the journey.

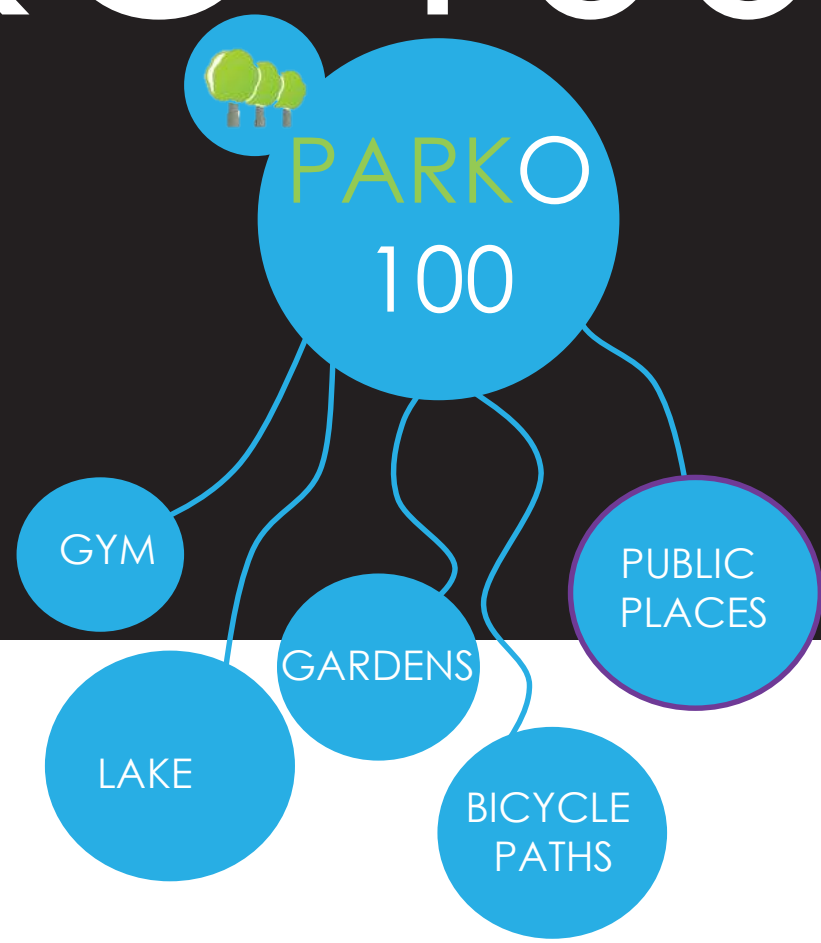


After having the concept, we continue the analysis of the sector to know the location and shape of the building, mainly study the solar path and winds present in the sector, also the paths present in the lot as are the vehicular and pedestrian. then follow the land use and saw that no housing sector, trade and industry, but in the neighborhood housing predominates



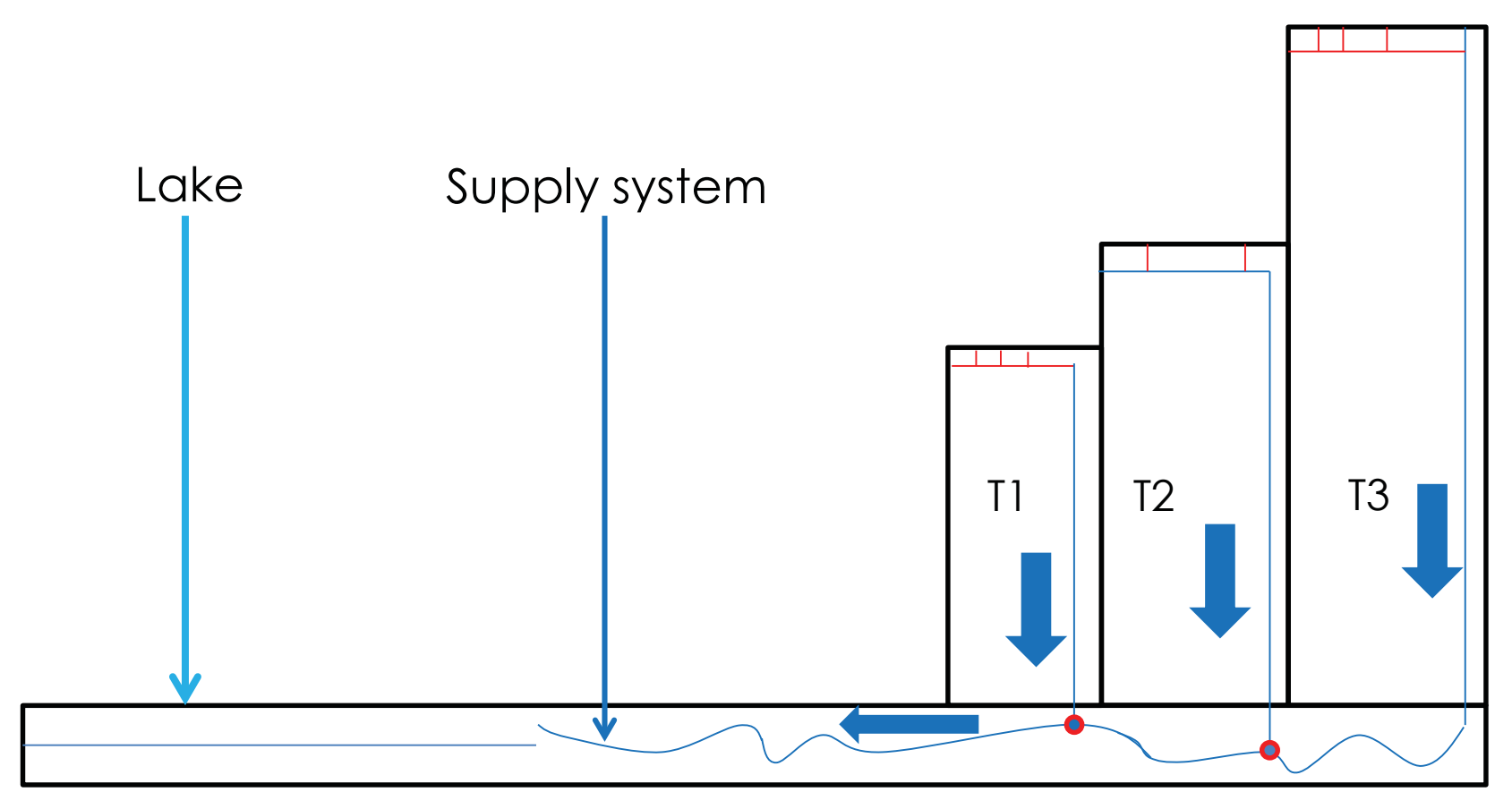
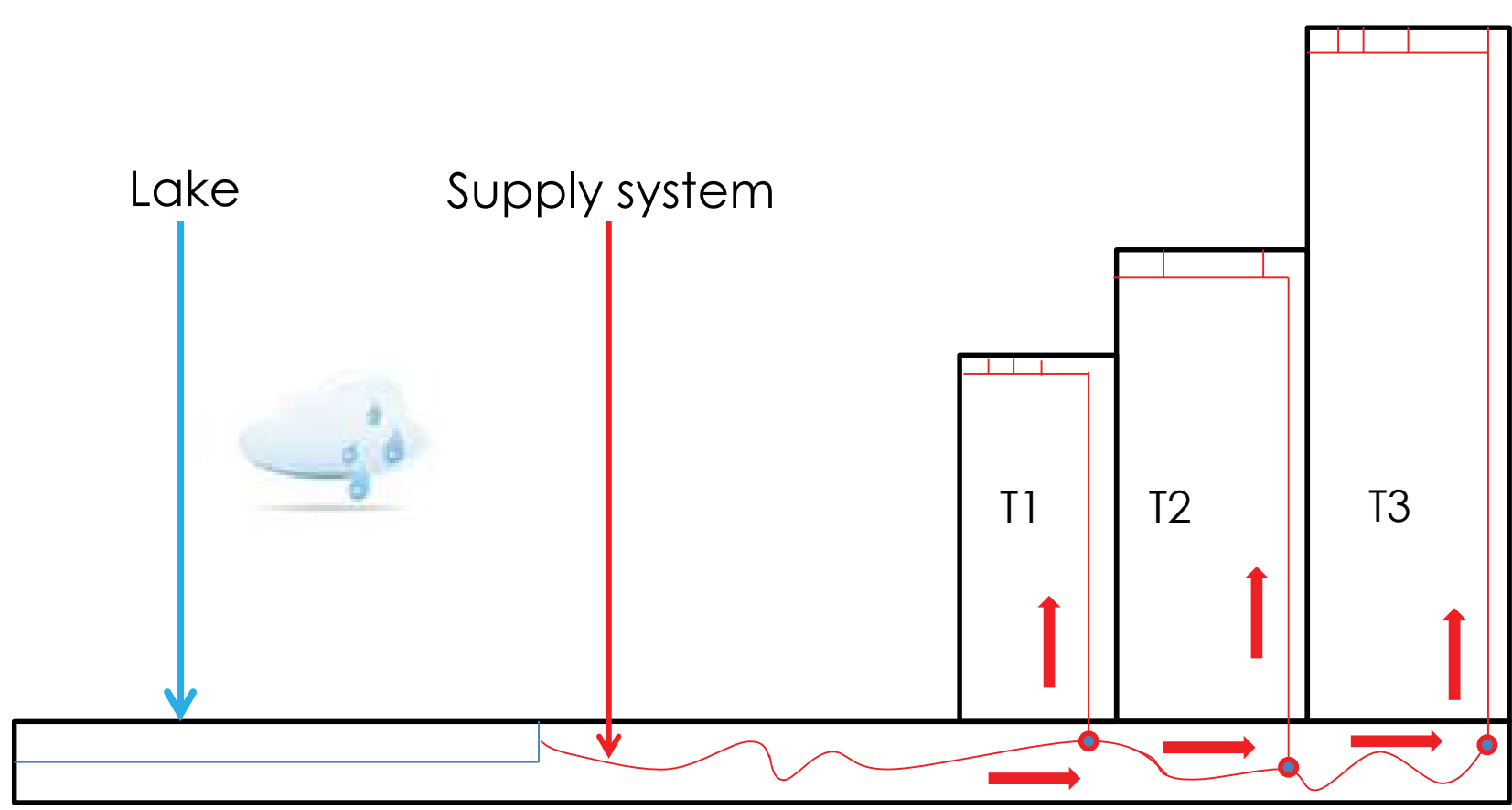


# COMPLEX PARKO 100



has been based on sustainability and self-sufficient use of natural resources right from the design stage. Rain water is collected from the roofs and stored in cisterns for irrigation and industrial use. There is large-scale planting of trees, where low-water-consumption native species abound, as well as thousands of small aromatic plants.

Parko 100, new ways of working and producing. A project that was born to respond to the manufacturing, logistic and corporate activities of businesses; a unique architectonic project which includes public space intervention, capable of transforming the scale and substance of the entire corporate philosophy; a philosophy founded on the pillars of sustainability, the promotion of more human working relationships and the pursuit of beauty and effectiveness on a daily basis. It is with this in mind that transparency, light and openness are the recurrent themes running through parko 100

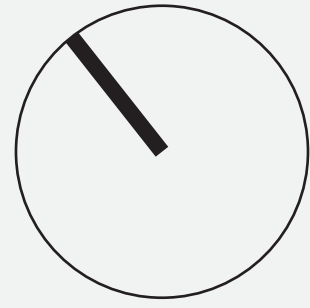




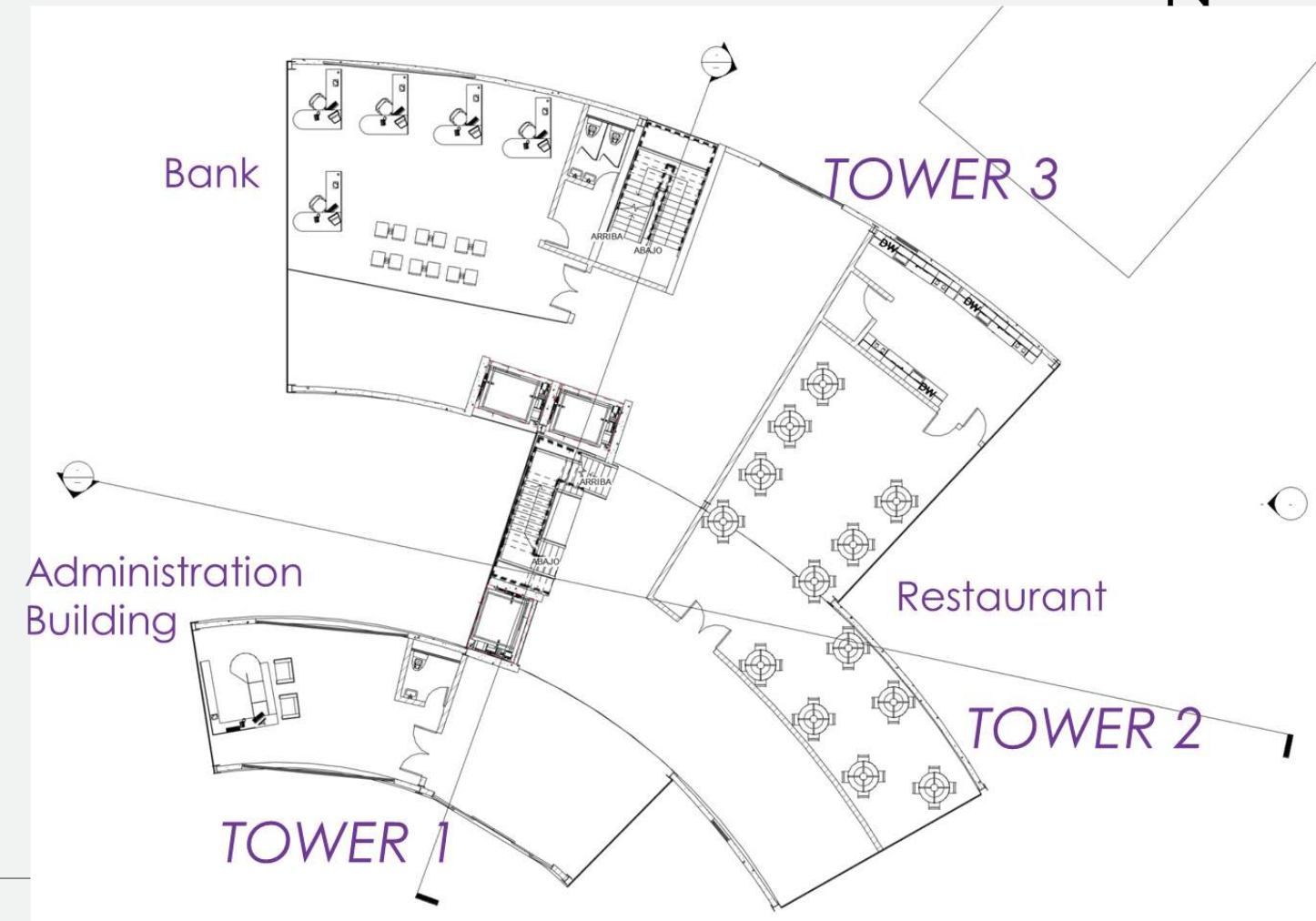
# COMPLEX PARKO 100



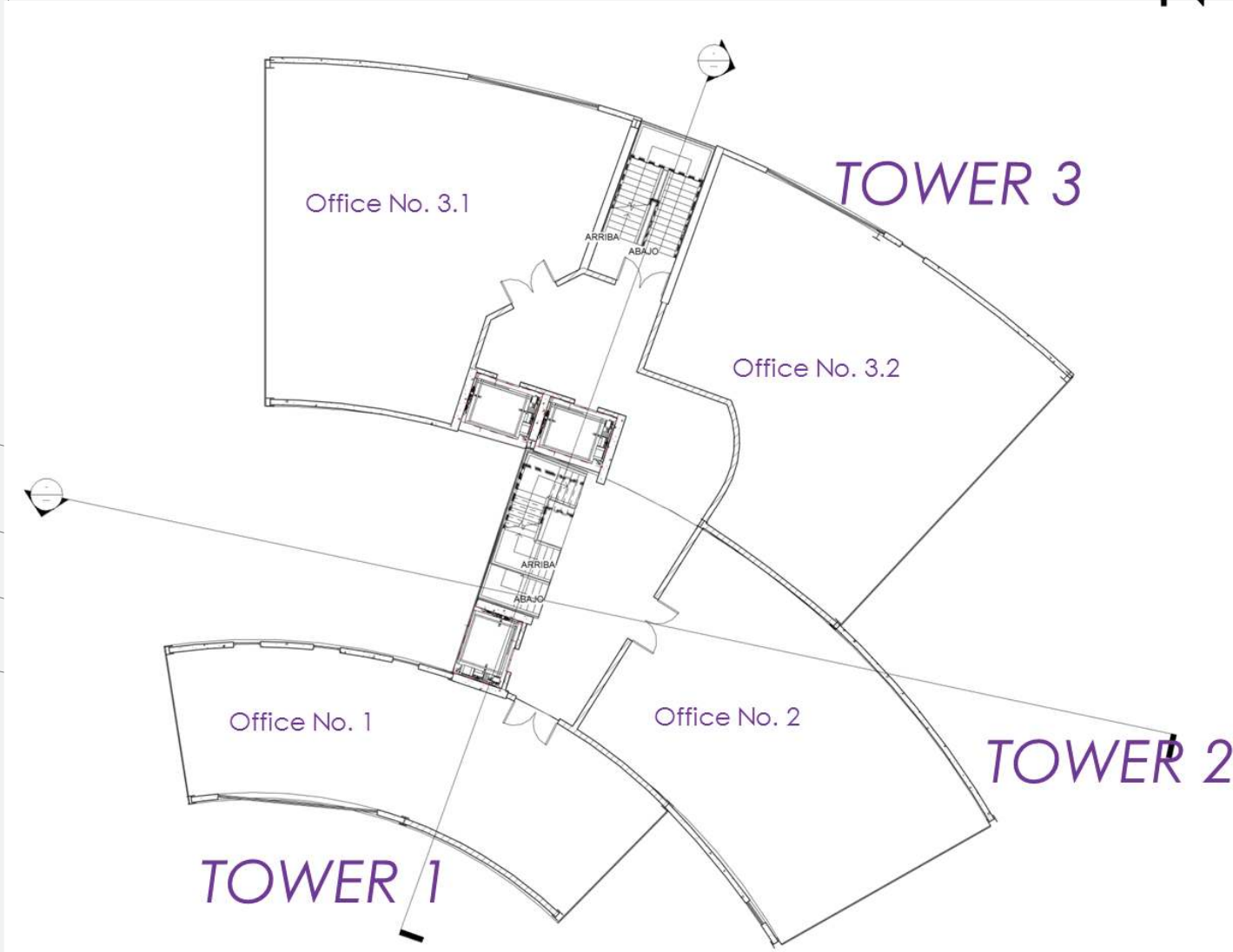
the building project was intended as 3 large stepped towers ignovacion first by Terms and design to acquire points, and allow for different uses in its terraces, the project has a modern character and wanted to propose a loft edification that has an open floor plan where only fixed points are located, for terms of comfort in the building will include a restaurant, and a space for the operation of a bank



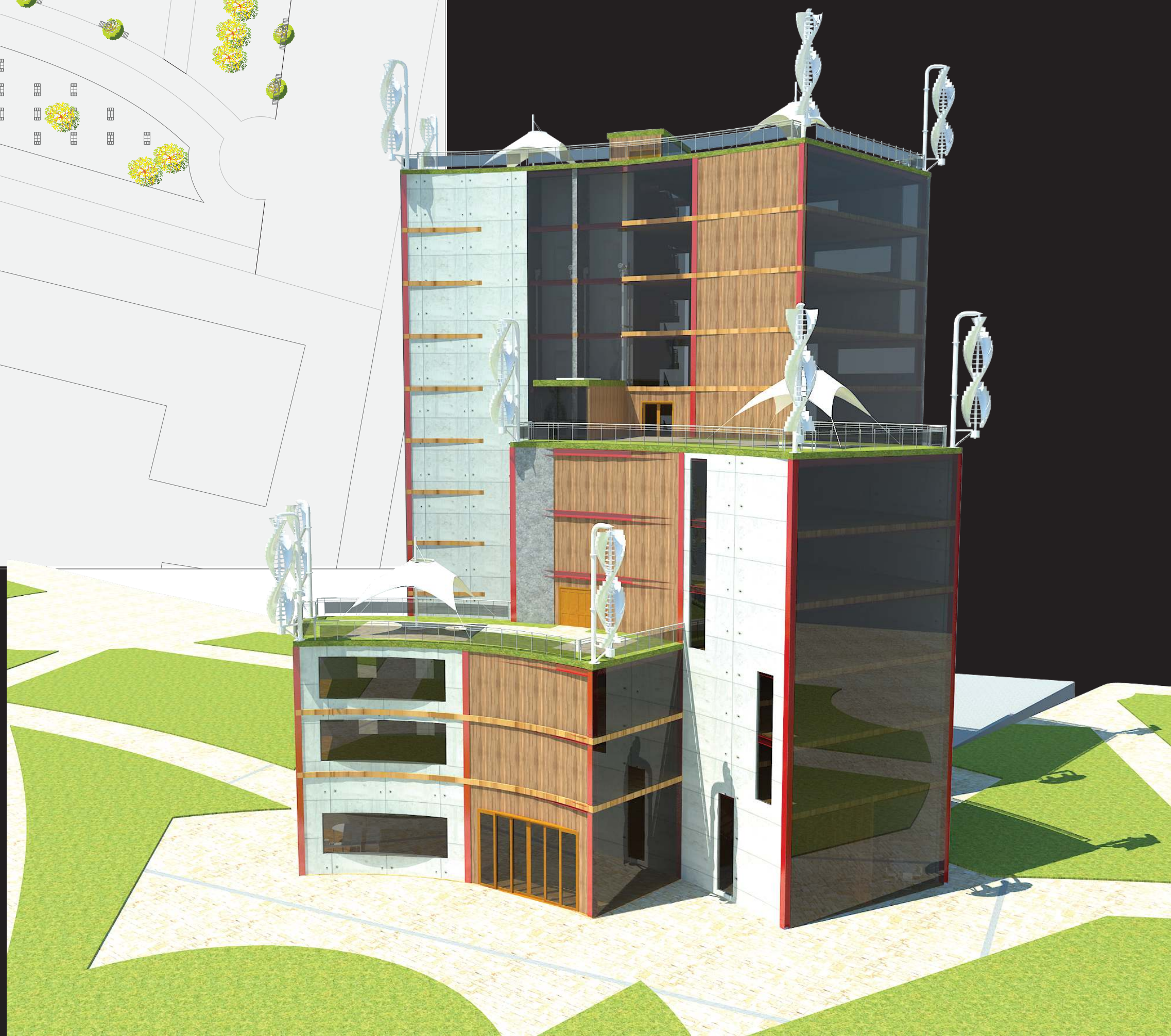
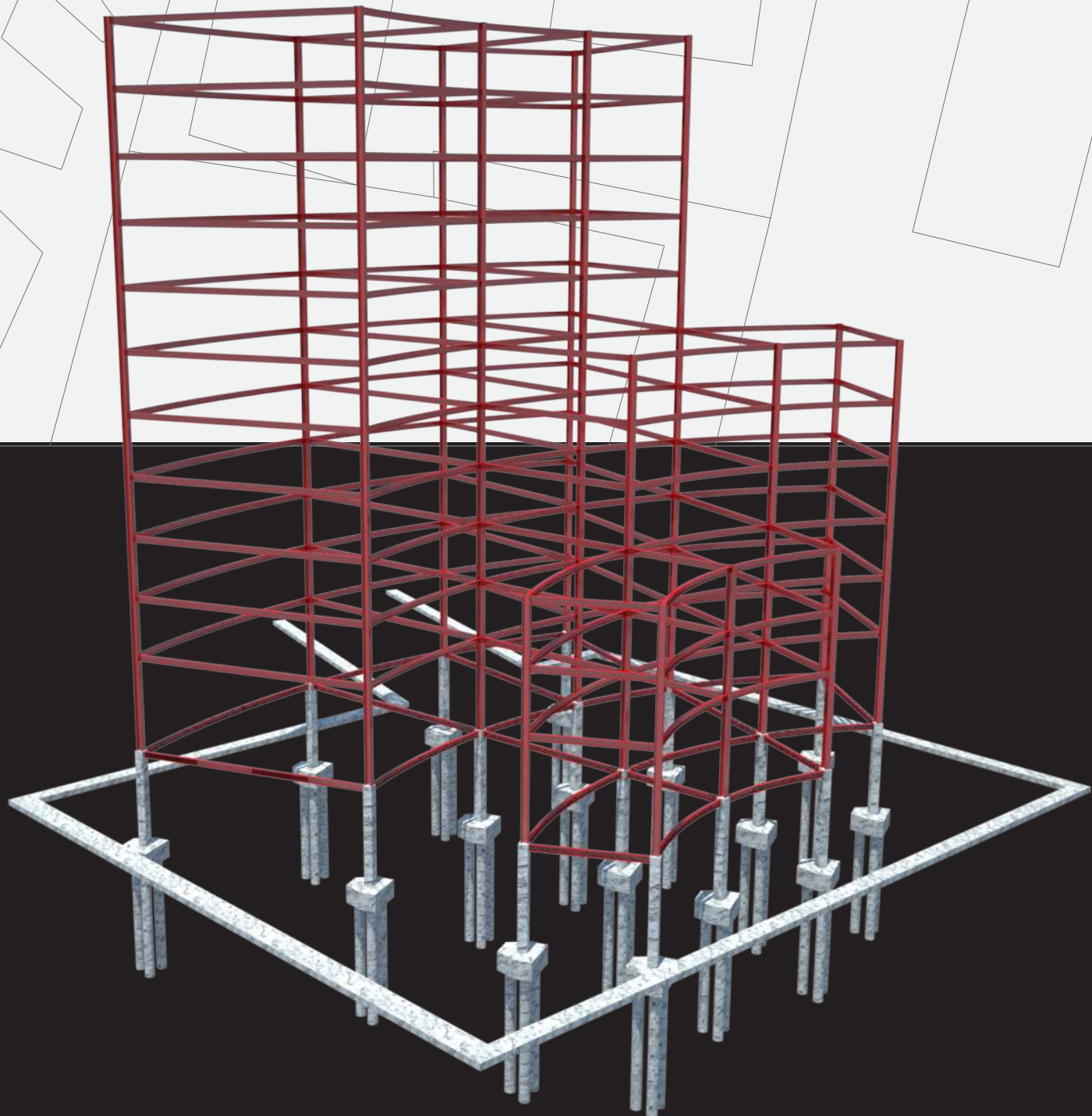
First floor Plan



Second floor Plan



the building and is intended as a friendly building environment in the 'part of the structure is developed in steel structure that is recycled but is more resistant and also can be further his columns freeing space inside the structure , the floor slabs are made of metal structure but on the first floor is concrete because the basement is a site with highly flammable fluids and materials, the laying of foundations are thought through piles and the basement has walls and walls containment.





# COMPLEX PARKO 100



81 points

in terms of leed what we did was certified platinum  
in terms of site-densificamos as the project develops and produces high travel green spaces that allow the connection of these two axes and decrease heat level through the vegetation area  
Integrate the community and Improve Their quality of life.  
Alternative Transportation to integrate pedestrian and little impact to the environment.  
Design of a small parking lot in the basement.  
Reduce the footprint of the building. Greater height less occupation.  
Maximize open space, public and environmental.  
Use That energy is re used and That is acquired in the building.  
Water Efficiency  
Use and devices in Place That reduces water consumption.  
Implement recycling in all Processes Which can.  
Use the park as a new system for the development and sustainability edificacion.  
Energy & Atmosphere  
Green Energy for all the building.  
Search use and in Place air purifiers.  
Designing methods of harnessing the sun and wind of the city.  
Materials and Resources  
Refuse materials as much as possible from the structure to the facade.  
Find as many recycled materials for the development of the building.  
Indoor Environmental Quality  
Design space for the best use of the land.  
Reduction of harmful agents: such as furniture divisions and a high environmental impact.  
Controlling the lighting system and a Natural ventilation without energy consumption.

