



**Woberlin** GmbH

REAL ESTATE INVESTMENTS



RESIDENCIAL BUILDING IN BERLIN - Wollankestraße, 13187 Pankov

## THE BUILDING, 1561 m<sup>2</sup>



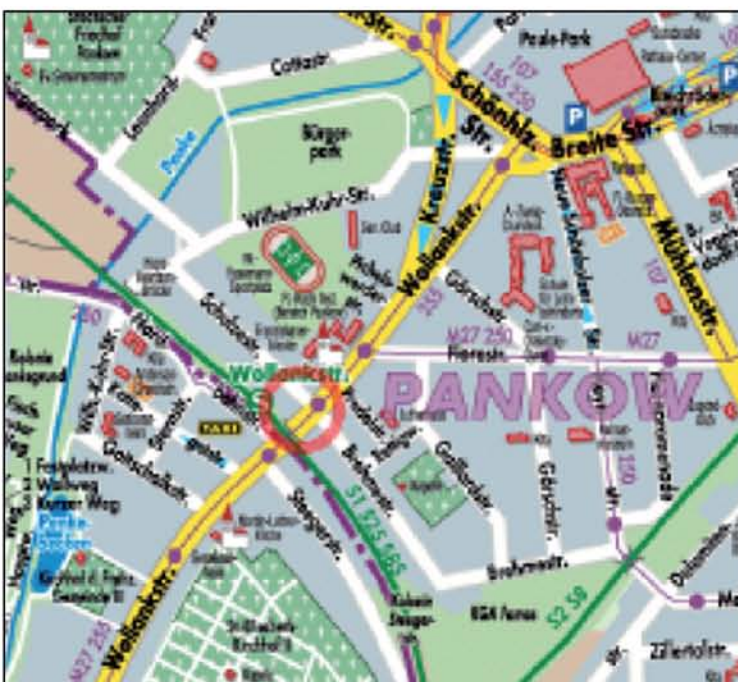
The five floor property is located in the central district of Pankow, at the corner between Wollankestraße and Schulzestraße.

The esteemed building was built in 1910 and façades are decorated with embossed stucco works.

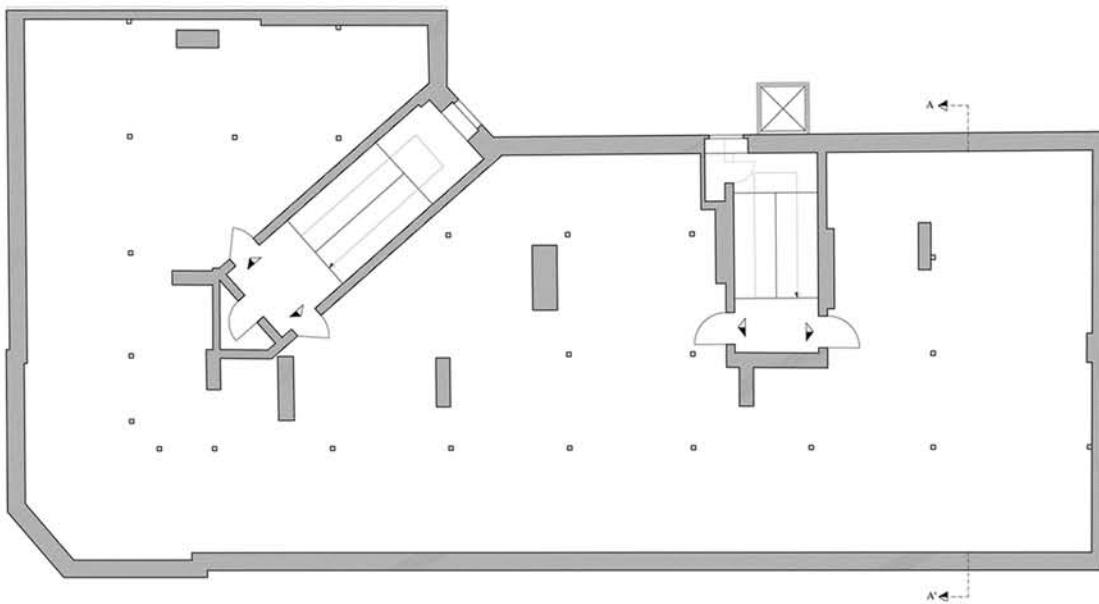
The building consists of:

- 17 apartments arranged among the four main floors, for a total area of 1120 m<sup>2</sup>;
- 2 commercial premises with independent entry located at the ground floor, for a total area of 100 m<sup>2</sup>;
- A habitable penthouse, for a total area of 333 m<sup>2</sup>;
- Basement

## THE DISTRICT OF PANKOV



## THE RESTUCTURING OF THE PENTHOUSE, 333 m<sup>2</sup>



ANTE-OPERAM



POST-OPERAM

## Proposal for Interior Furnishing n. 1: CLASSIC & COMFORTABLE DESIGN



## Proposal for Interior Furnishing n. 1: CLASSIC & COMFORTABLE DESIGN



## Proposal for Interior Furnishing n. 2: MINIMAL DESIGN



## Proposal for Interior Furnishing n. 2: MINIMAL DESIGN



**Woberlin** GmbH

REAL ESTATE INVESTMENTS

Paselwalkerstraße 90  
De.13127 Berlin  
T +49(0)3033935948  
F +49(0)3033935951  
[www.woberlin.de](http://www.woberlin.de)  
[info@woberlin.de](mailto:info@woberlin.de)