

TONI CATANY  
INTERNATIONAL  
PHOTOGRAPHY CENTRE  
Llucmajor, Mallorca

Press kit  
December, 2021



**mateo**arquitectura

**1st Prize (by unanimity):**  
National Project Competition 2018

**Developer:**  
Government of the Balearic Islands  
(Department of Culture) and  
Spanish Ministry of Culture

**Architect:**  
Josep Lluís Mateo

**Design date:**  
2018-2019

**Construction date:**  
November 2019 - September 2021

**Built surface area:**  
1.200 m<sup>2</sup>

**Colaboradores externos:**

**Contractor:**  
Obras y Pavimentos MAN

**Technical architect:**  
Biel Garcies

**Structures:**  
BAC Engineering Consultancy Group

**Installations and sustainability:**  
DEERNS

**Bill of quantities:**  
Arrevolt

**Photographer:**  
Aldo Amoretti y Gabriel Ramon

**Video maker:**  
Dan Barreri

Content:

Tony Catany International Photography Centre, by Josep Lluís Mateo .....4

Plans .....16

Epilogue.....19

TONI CATANY INTERNATIONAL PHOTOGRAPHY CENTRE IN LLUCMAJOR,

BY JOSEP LLUÍS MATEO

In the old town of Lluçmajor (Mallorca), occupying part of the house where the photographer Toni Catany was born, we built the International Photography Centre, based on the work and the collection of this great artist.

The place, the history, the remains, the scale, the classic typology of houses closed to the outside and open onto courtyards... all of this obviously forms the base for the project.

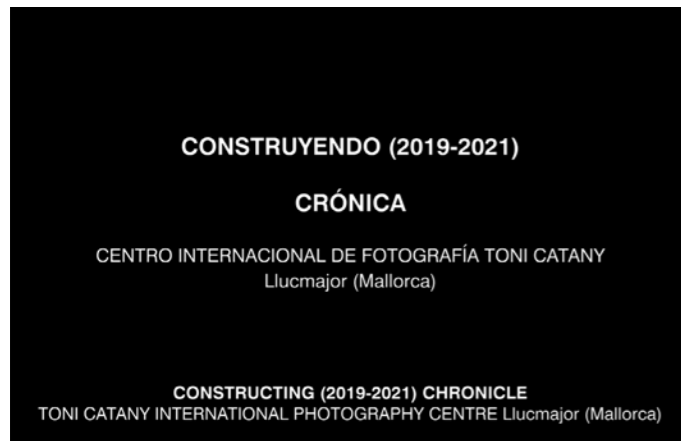
They are phantoms or realities that accompany us, though we have to control them.

However, we did not forget that our mission here was to build a contemporary museographic centre of reference as a suitable setting for exceptional works.

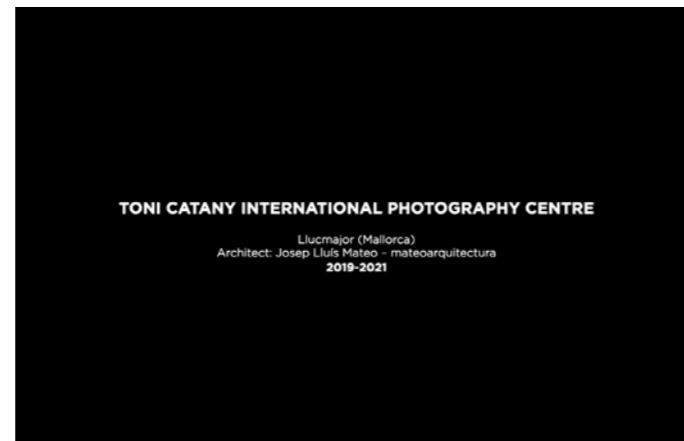
We conserved remains, rebuilding some, we primitively restored the façades with care... But the space is new, open, flexible, large, available, with very controlled light, sometimes shadowy...

Some singular elements appear: a staircase that takes flight, another that recreates the chromatic world of the artist in question...

Though the protagonist is always the space with an accompanying detail at hand that is both radical and approachable.

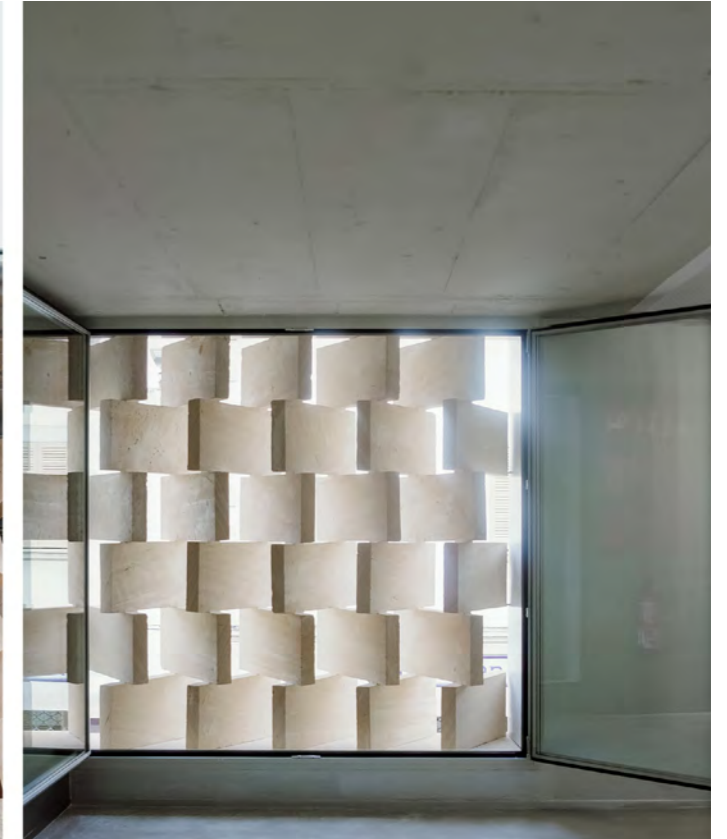
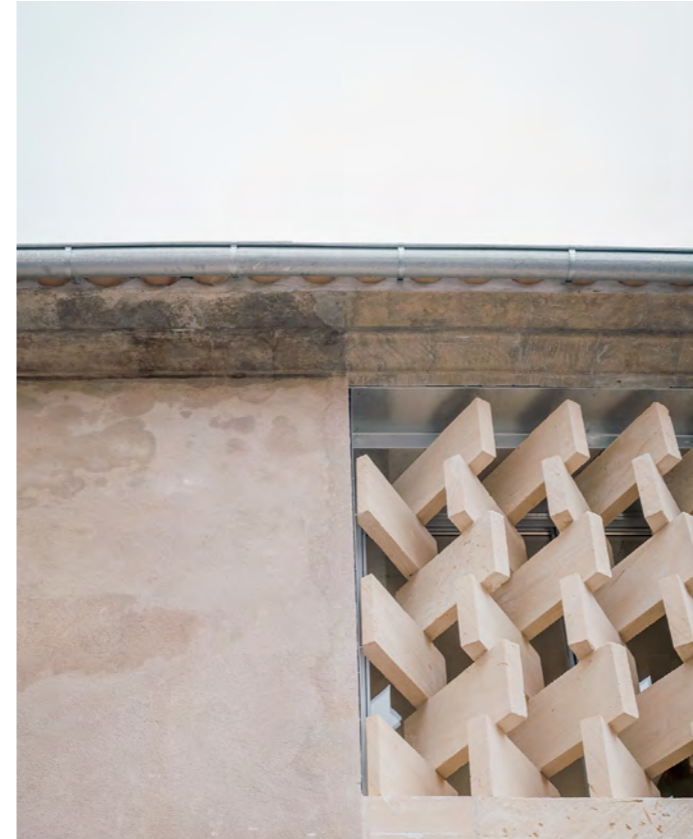


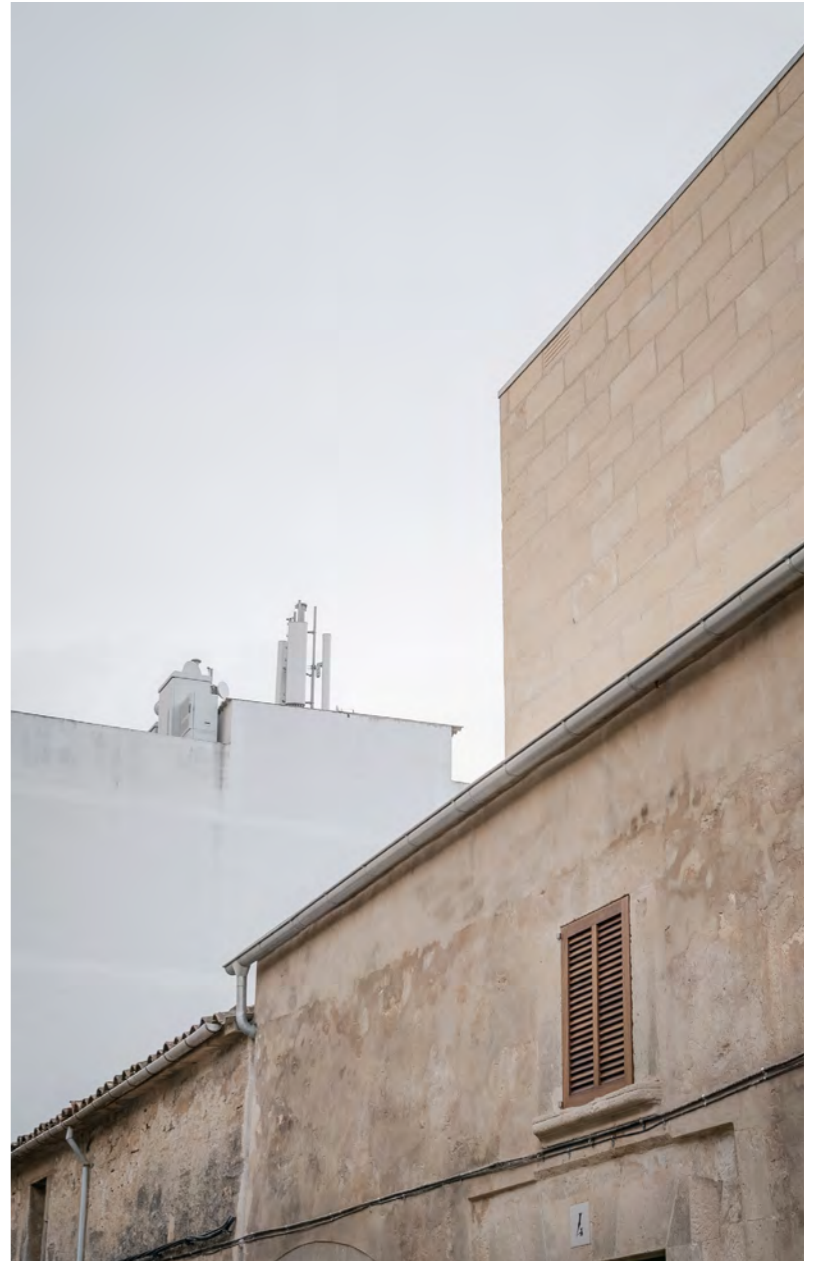
*Watch video*



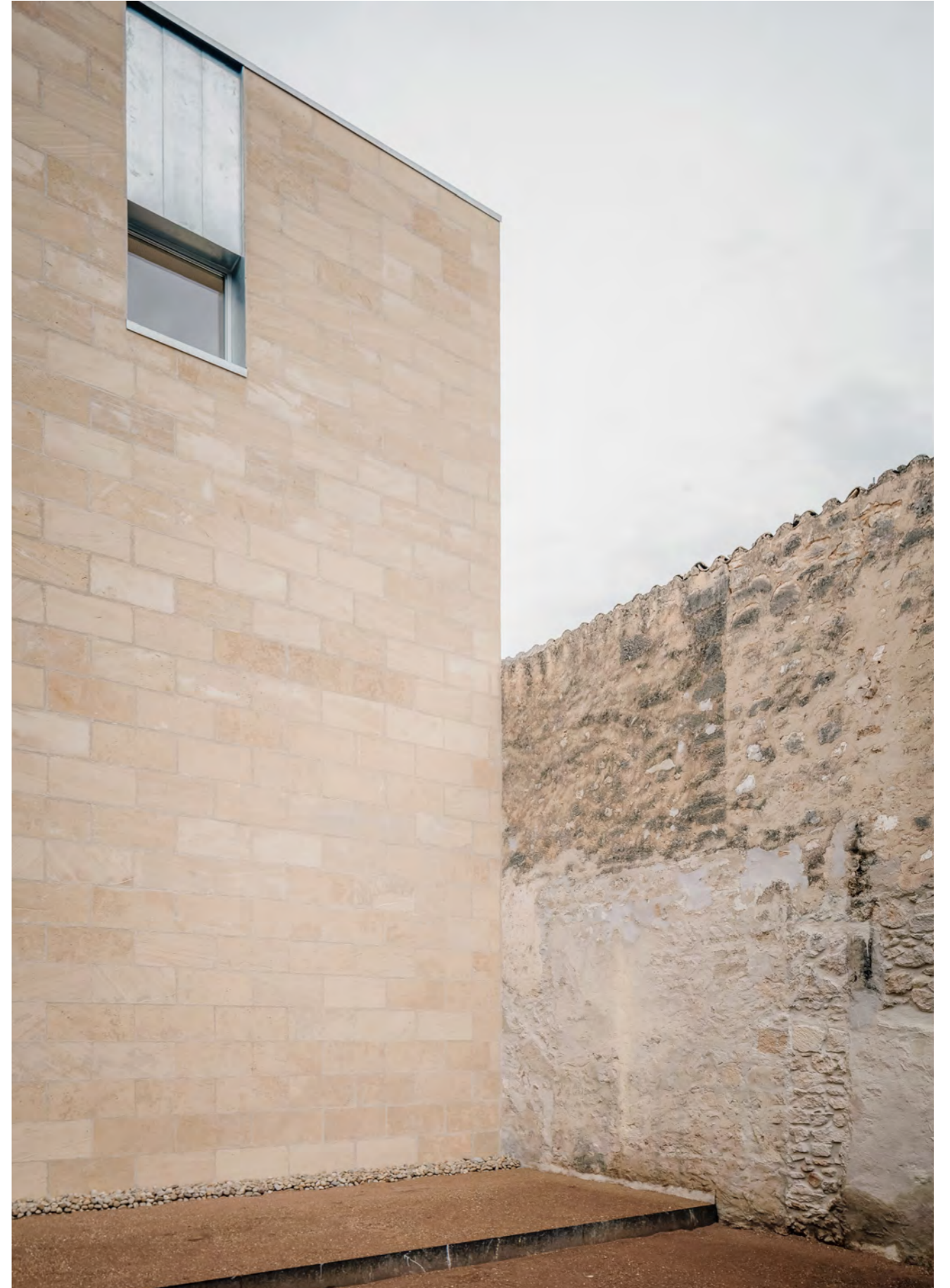
*Watch video*

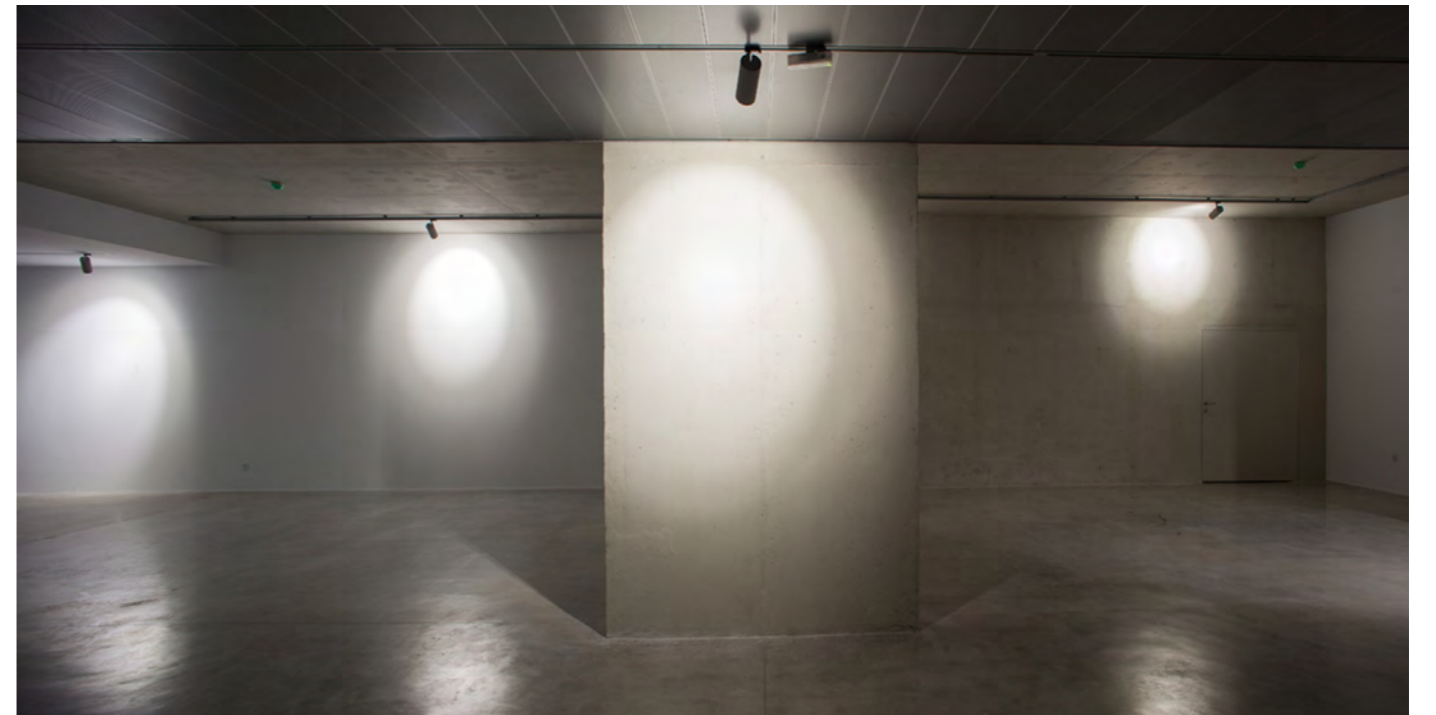






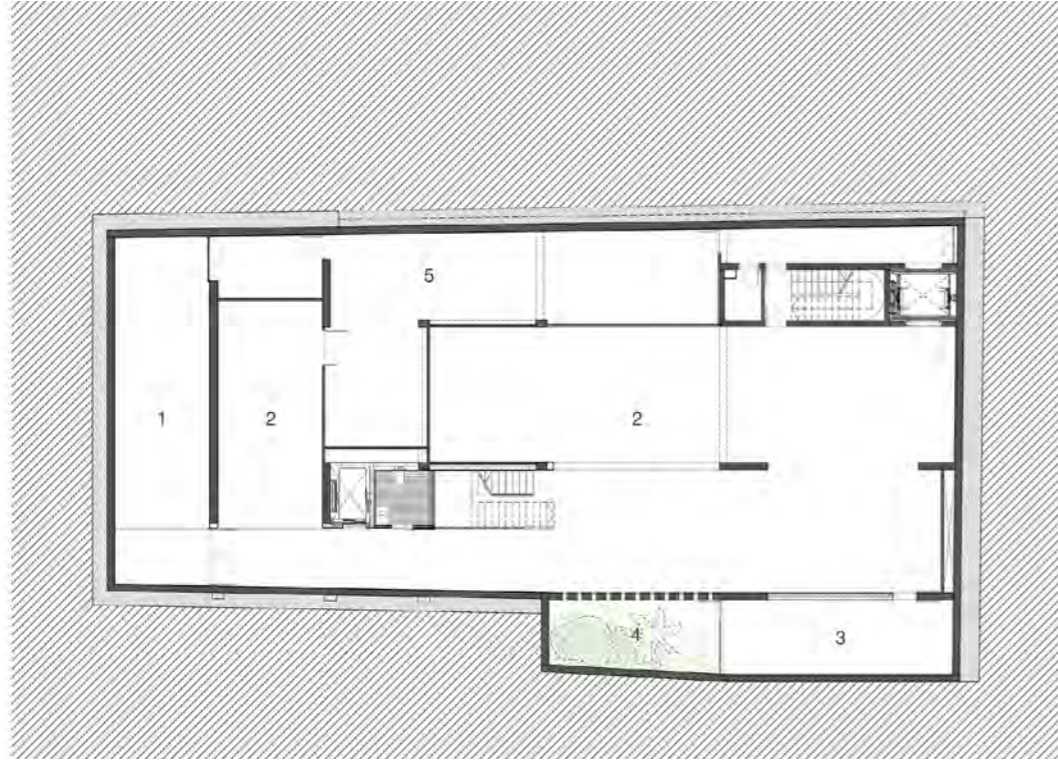








PLANS



- 1. Function room
- 2. Exhibition
- 3. Technical room
- 4. Patio
- 5. Service room / Storage

Planta Sótano



- 1. Library
- 2. Exhibition
- 3. Restoration and storage of negatives

Primera planta



- 1. Public access
- 2. Private and goods access
- 3. Patio
- 4. Exhibition
- 5. Emergency exit
- 6. Courtyard
- 7. Didactic pavilion

Planta Baja



- 1. Secretariat and management

Segunda planta

EPILOGUE

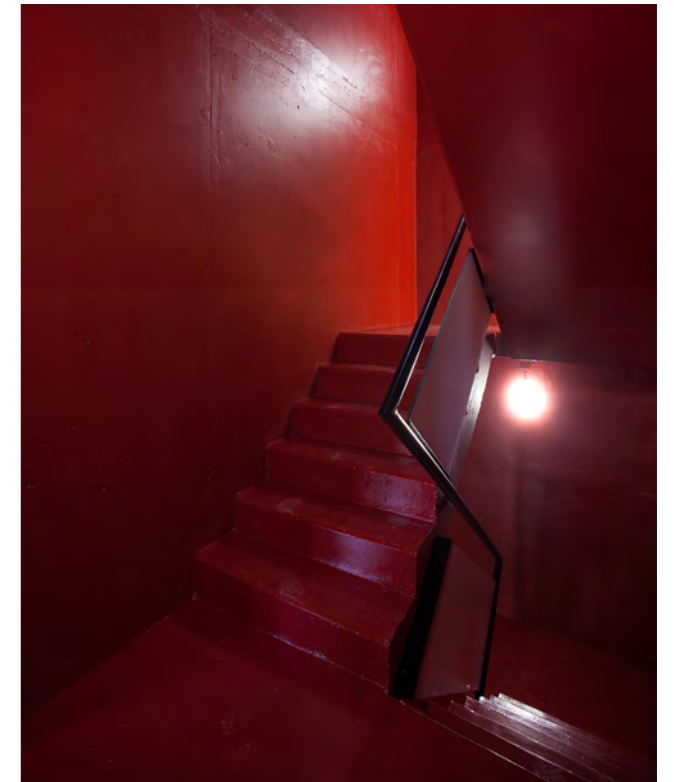


This is a building constructed during the COVID-19 pandemic, with its different moments of isolation, distance and digitality.

Though here we had to produce something that was concrete, close, manual, in a distant and sometimes desperately archaic world.

It was not easy.

Josep Lluís Mateo



Press contact:  
Lucía de la Rosa  
[community@mateo-arquitectura.com](mailto:community@mateo-arquitectura.com)  
T.+ 34 932 186 358 (ext. 100)

More info:

[www.mateo-arquitectura.com](http://www.mateo-arquitectura.com)

[facebook](#)

[instagram](#)

[twitter](#)

[linkedin](#)

[pinterest](#)