

Casa della Memoria, Milano



baukuh

**con dotdotdot, Stefano Graziani,
Amedeo Martegani, Giovanna Silva**









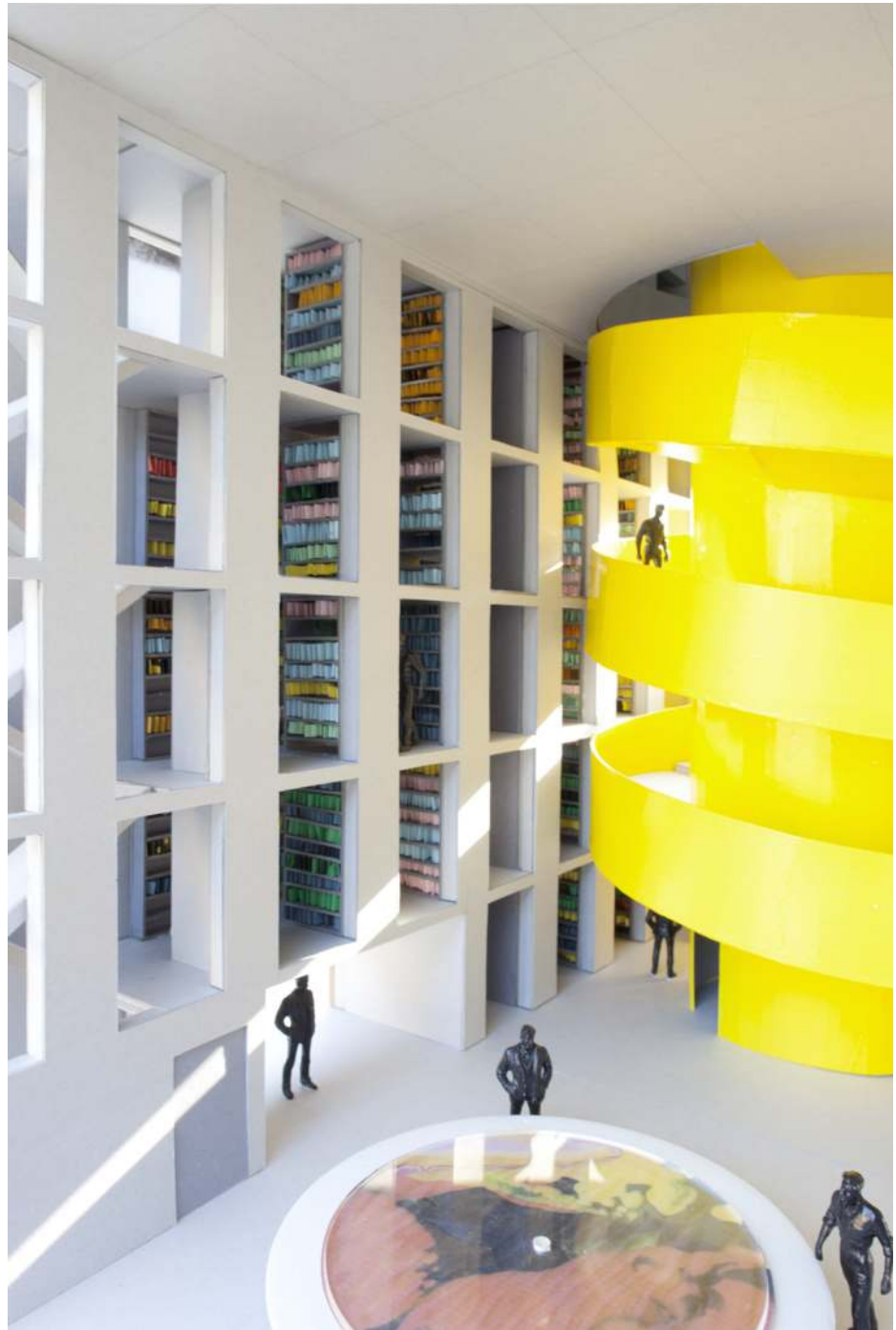






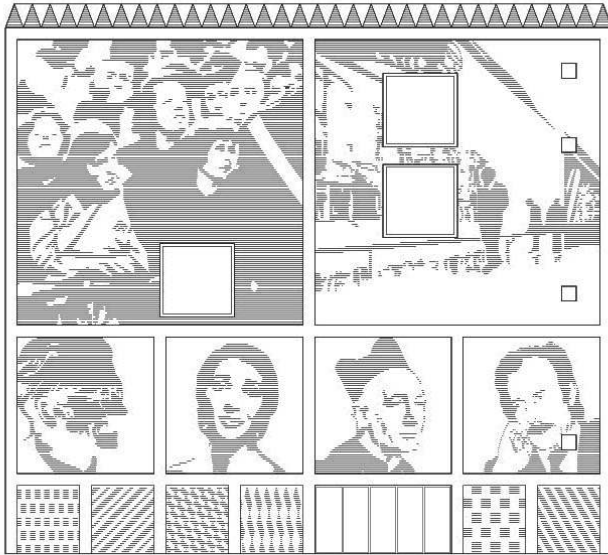






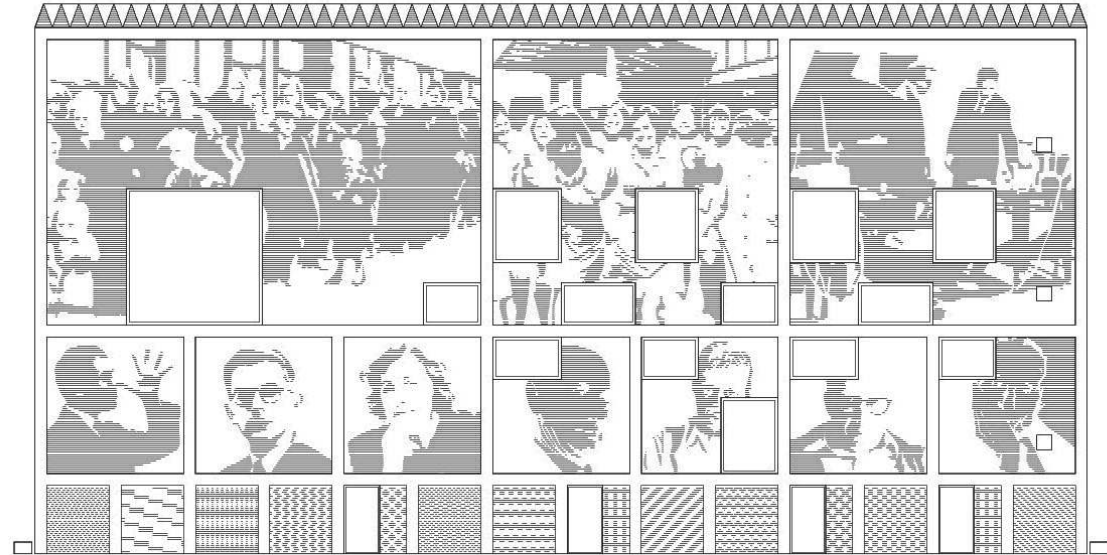






prospetto sud (sui Giardini di Porta Nuova)

South elevation (facing the Giardini di Porta Nuova)



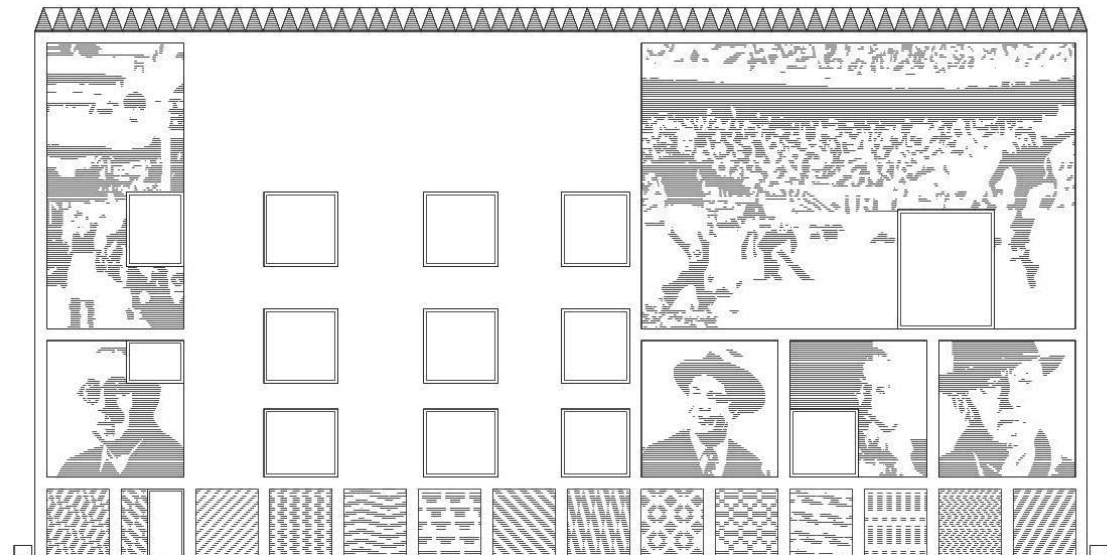
prospetto est (su via Volturmo)

East elevation (facing via Volturmo)



prospetto nord (su via Confalonieri)

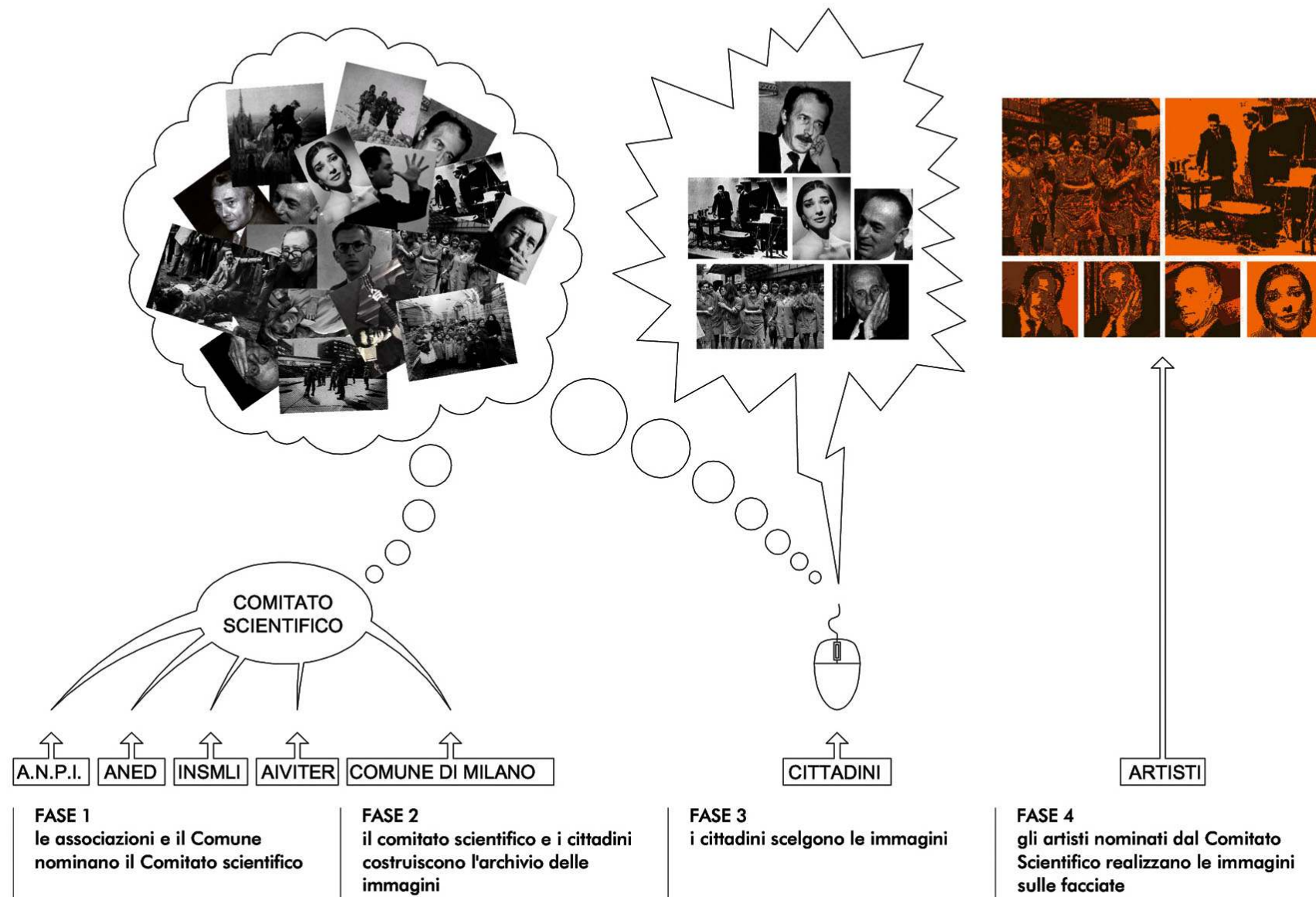
North elevation (facing via Confalonieri)

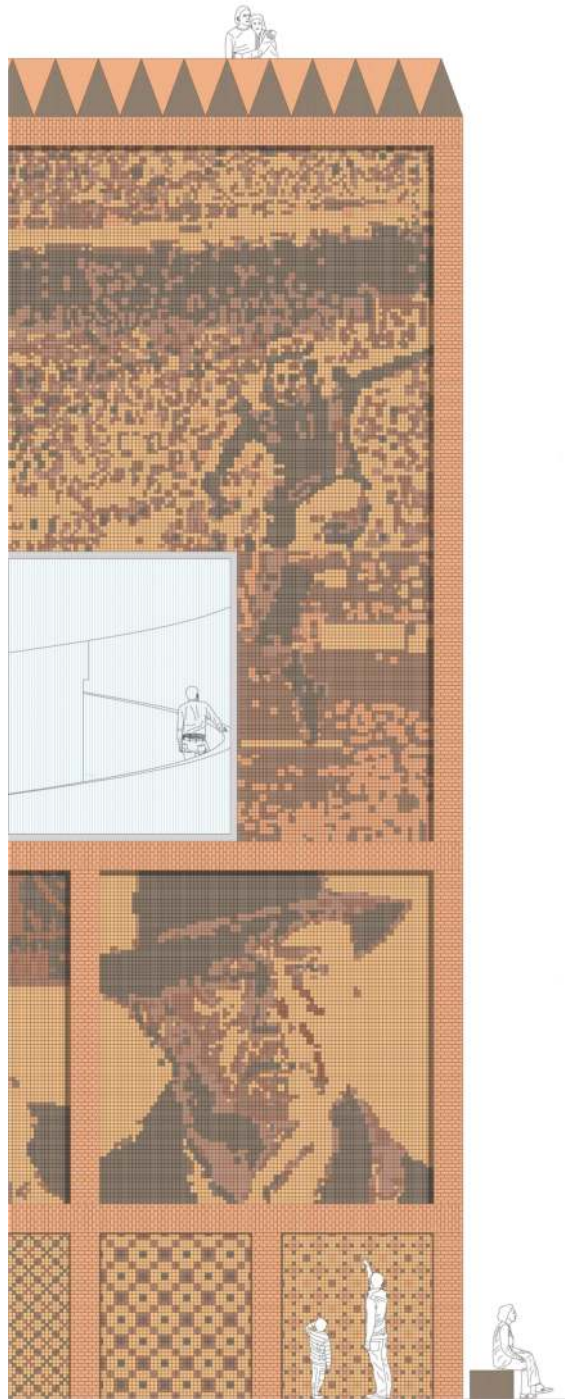


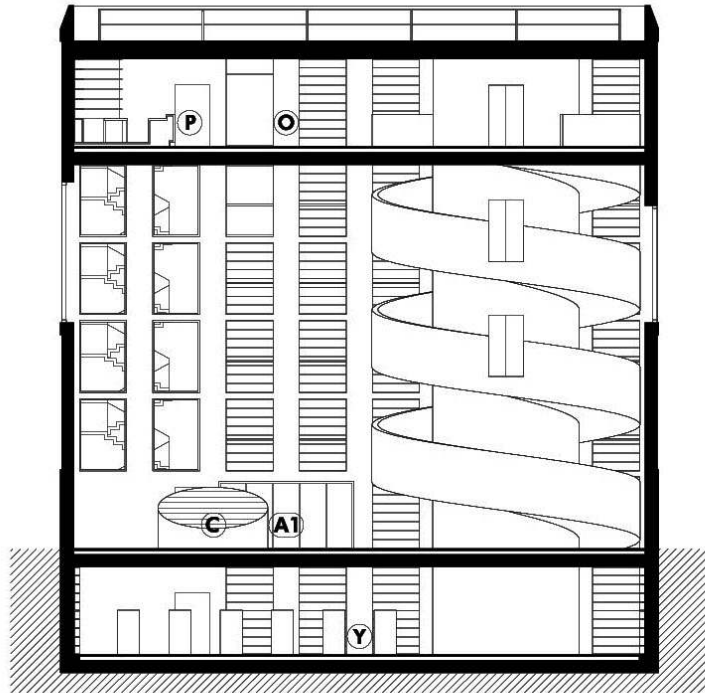
prospetto ovest

West elevation

IL GIOCO DELLA MEMORIA
costruzione del programma iconografico

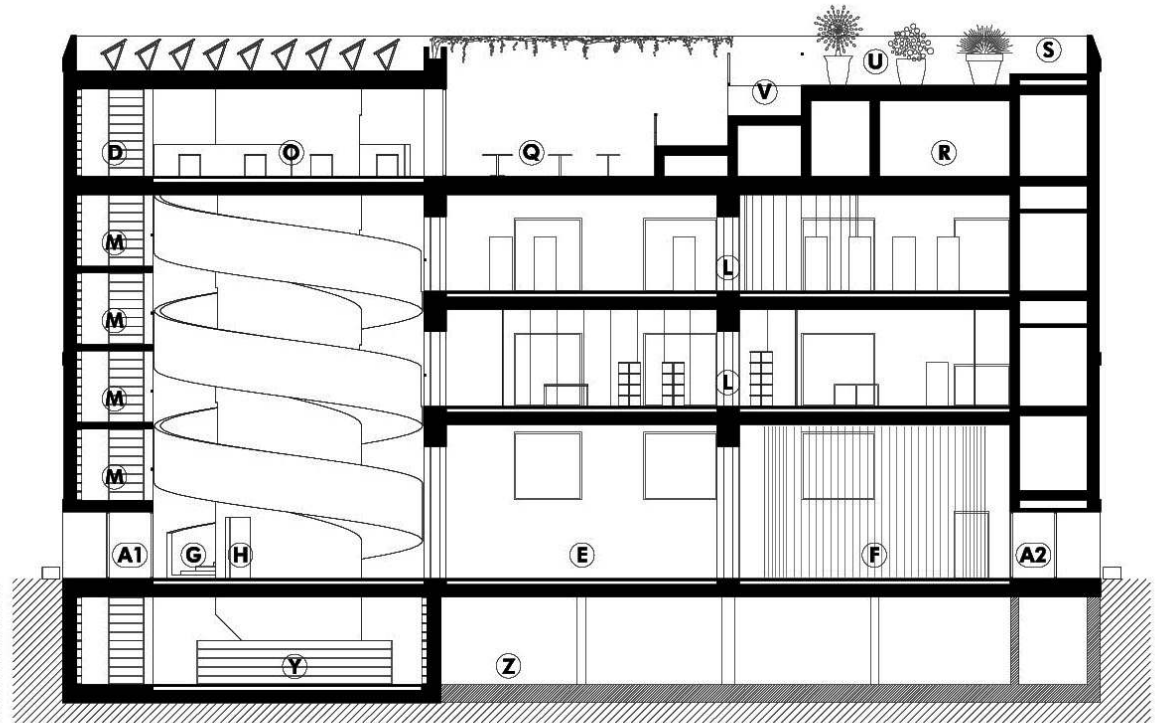






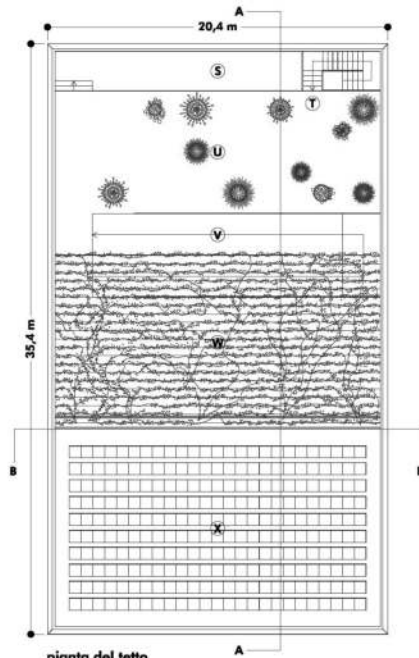
sezione trasversale

cross section



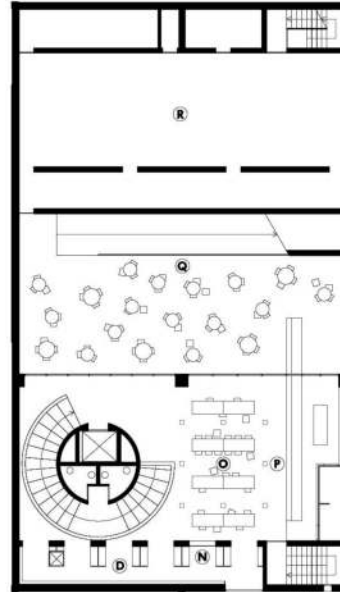
sezione longitudinale

longitudinal section



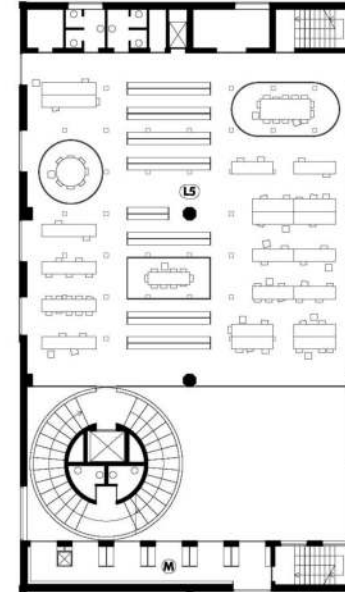
**pianta del tetto
(terrazza panoramica)**

roof plan (panoramic terrace)



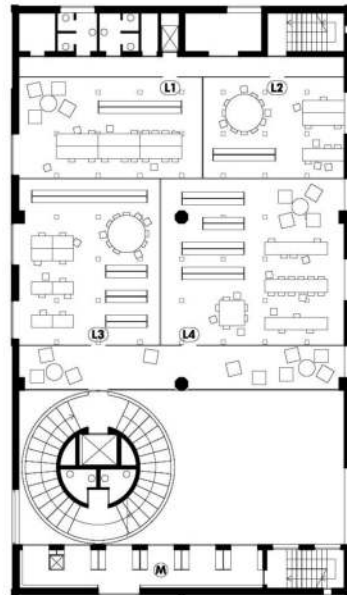
pianta terzo piano (consultazione, bar, terrazza)

3rd floor plan (consultation area, cafeteria, terrace)



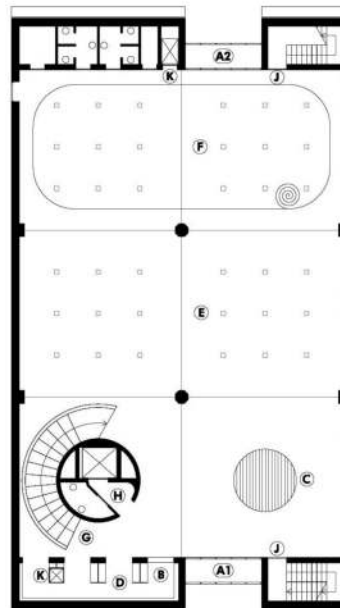
pianta secondo piano (uffici)

2nd floor plan (offices)



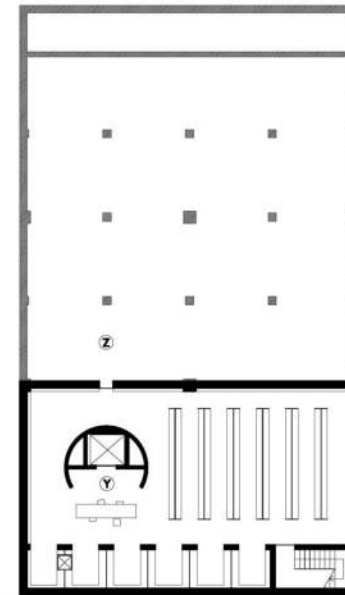
pianta primo piano (uffici)

1st floor plan (offices)



pianta piano terra (ingresso)

ground floor plan (entrance)

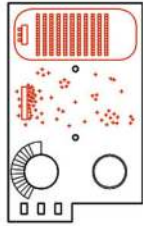


pianta piano interrato (archivio)

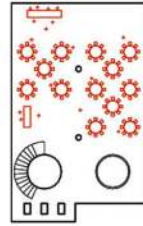
underground floor plan (archive)

FLESSIBILITA' DEGLI SPAZI PUBBLICI: piano terra

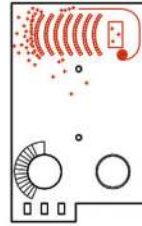
PUBLIC SPACES FLEXIBILITY: ground floor



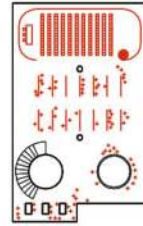
**conferenza
con buffet**
—
lecture
with buffet



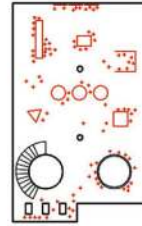
**cena di
beneficenza**
—
charity dinner



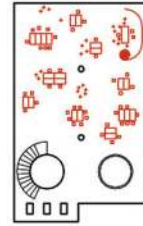
concerto
—
concert



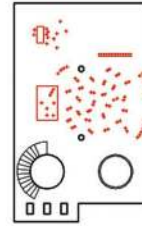
convegno
—
convention



mostra
—
exhibition



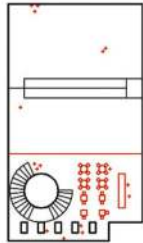
workshop



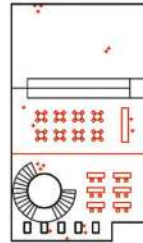
ballo liscio
—
ballroom
dancing

FLESSIBILITA' DEGLI SPAZI PUBBLICI: terrazza

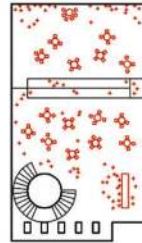
PUBLIC SPACES FLEXIBILITY: terrace



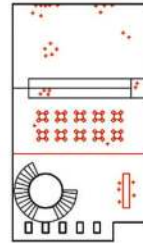
**bar e sala
consultazione
(inverno)**
—
bar and reading
room (winter)



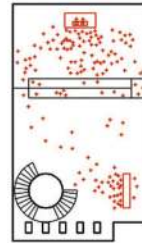
**bar e sala
consultazione
(estate)**
—
bar and reading
room (summer)



aperitivo
—
aperitif



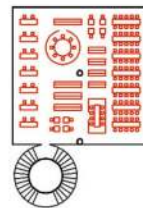
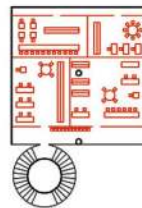
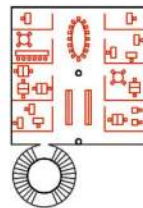
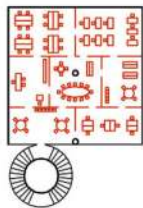
**domenica
pomeriggio**
—
sunday
afternoon



festa
—
party

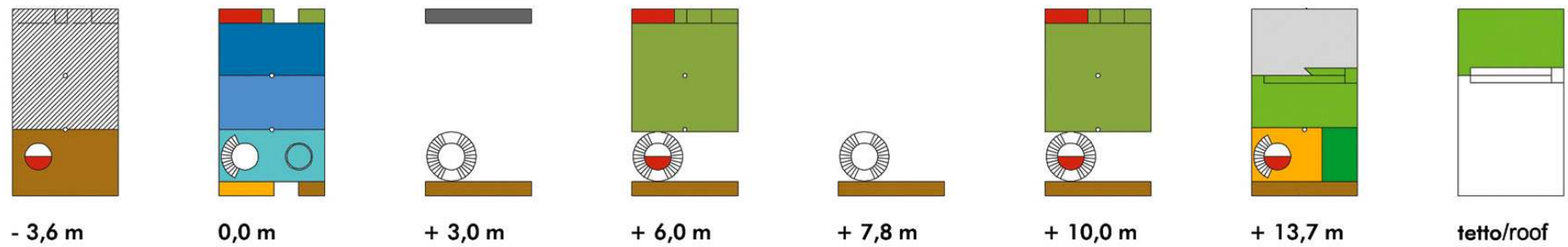
FLESSIBILITA' DEGLI UFFICI: secondo e terzo piano

OFFICES FLEXIBILITY: 2nd and 3rd floor

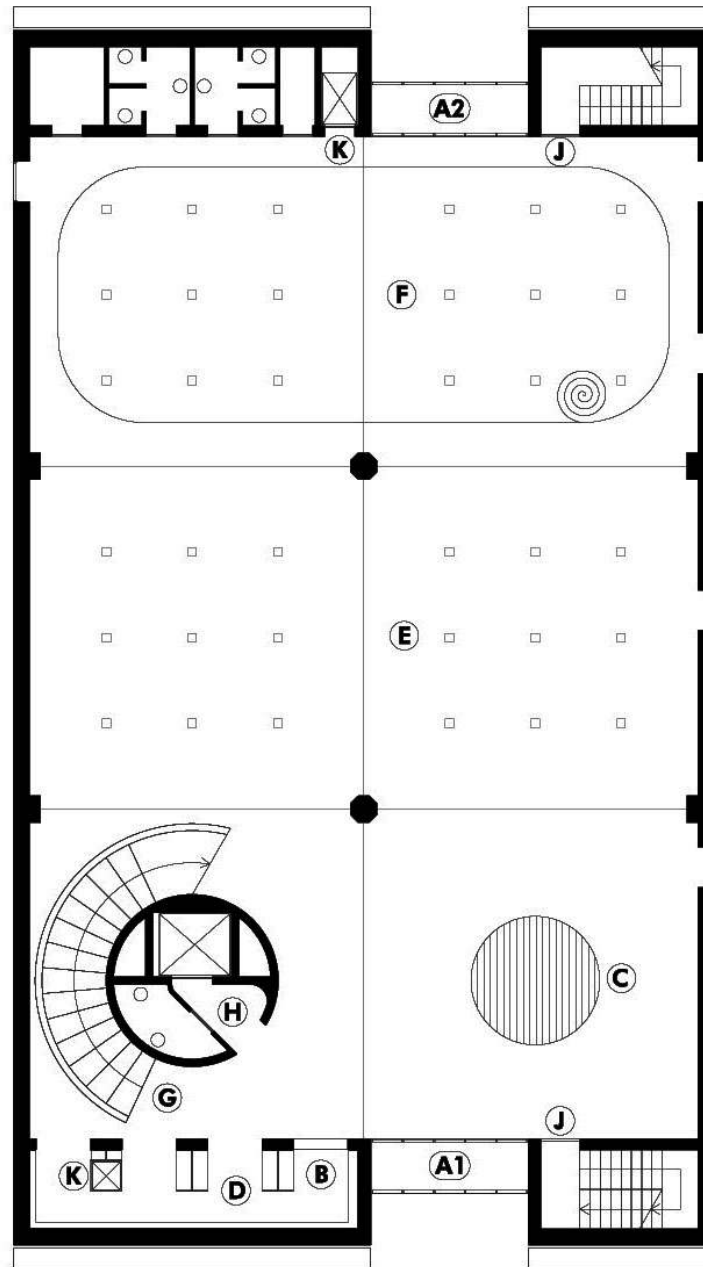


PROGRAMMA FUNZIONALE

PROGRAM OF THE FUNCTIONS



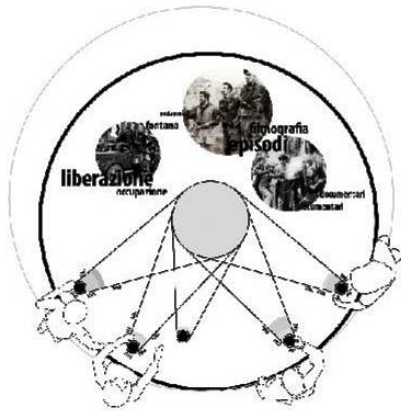
- | | | | |
|---|---|---|--|
|  | archivio/archives (520 mq/sqm) |  | servizi igienici/bathrooms (80 mq/sqm) |
|  | sala consultazione/consultation room (120 mq/sqm) | TOTALE/TOTAL (2035 mq/sqm) | |
|  | ingresso/hall (100 mq/sqm) |  | terrazze/terraces (420 mq/sqm) |
|  | spazio espositivo/exhibition area (185 mq/sqm) |  | magazzini/storeges (50 mq/sqm) |
|  | uffici/offices (780 mq/sqm) |  | vano tecnico non abitabile /technical space (200 mq/sqm) |
|  | bar/cafeateria (65 mq/sqm) |  | spazio per future estensioni /space for future enlargements (420 mq/sqm) |



pianta piano terra (ingresso)

ground floor plan (entrance)

TAVOLO INTERATTIVO







www.baukuh.it