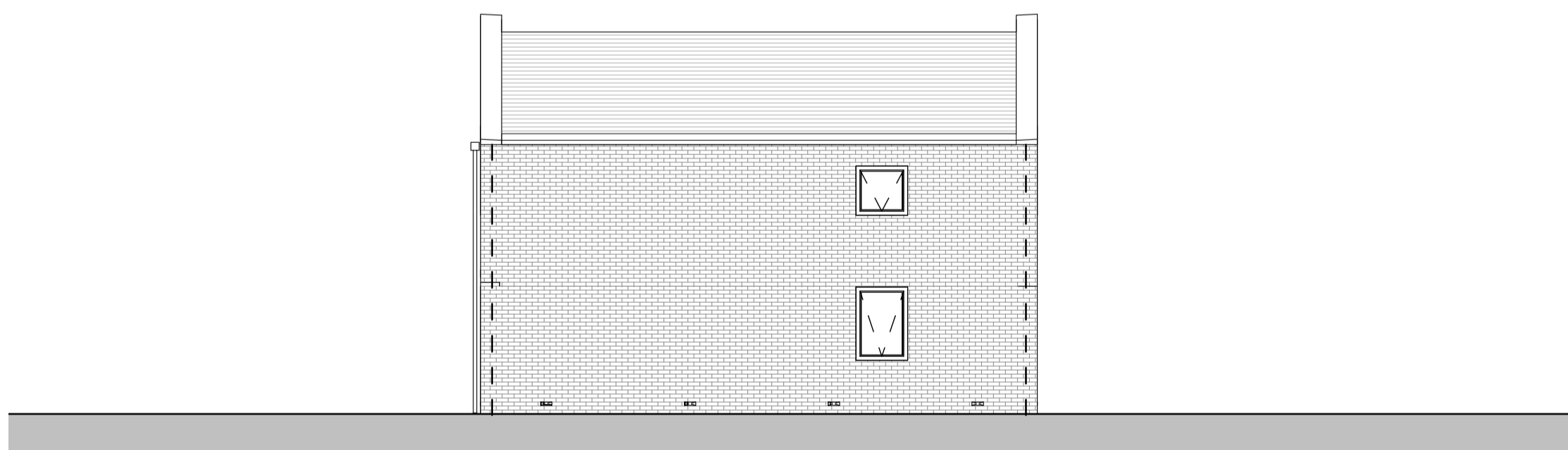




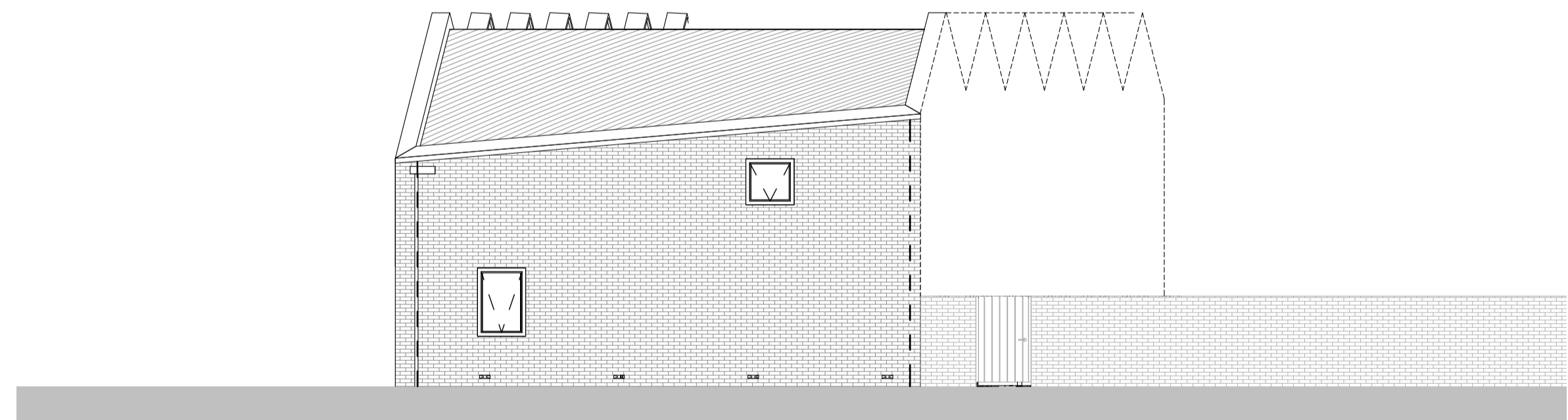
01 East Elevation



02 West Elevation



03 South Elevation



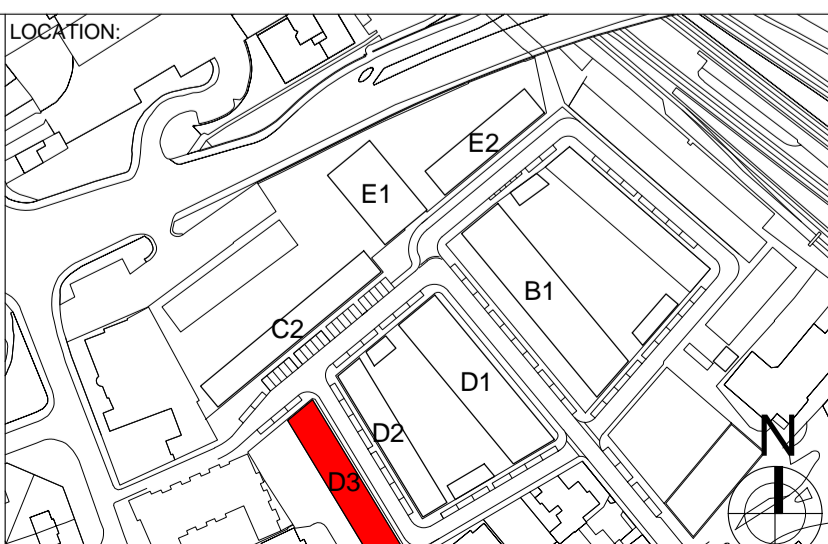
04 North Elevation

REV	DATE	NOTE
-	21/09/11	revision note: Issued for Stage D
P01	18/11/11	For Information
P02	02/12/11	Issued for Stage E
P03	16/12/11	Issued for Stage E amendments; windows & garden wall updated
P04	26/03/12	Roof pitch to units D3-108 and D3-201 adjusted to 30 degrees Window positions adjusted Garden fences deleted from AHMM model NB Fences still required Garden gate to D3-201 moved
P05	25/05/12	For Information: Windows updated, timber garden gates added & movement joints added to brickwork; other revisions to be listed with P06 issue
P06	12/06/12	Issued for stage F; air brick setting out added to all elevations; satellite dish added to west elevation; setting out of external lighting and ladder restraint hooks added to rear elevation
P07	07/09/12	Updated following LOR comments, for Stage F Annotations and dimensions updated and amended Parapet updated. Graphic display of water buds amended to show airbricks
C01	07/12/12	Setting out of air bricks, external lights, ladder hooks and rainwater goods updated. Stepping DPC noted.
C02	15/11/13	FINAL ISSUE

NOTE:
This drawing is the last revision issued for construction under the building contract. This drawing has not been verified by site survey and construction tolerances may have resulted in differences between this drawing and the finished building. The references on this drawing refer to details which were required for construction but may not have been updated to incorporate the final building design. The drawing has been given a revision reference and any specific comments are noted in the revision column.

- LANDSCAPE SHOWN INDICATIVE ONLY. REFER TO LANDSCAPE ARCHITECT'S DRAWINGS FOR CLARIFICATION OF LANDSCAPE DESIGN

NOTE:
1. Do not scale from this drawing.
2. All dimensions to be checked on site by the contractor and such dimensions to be his responsibility.
3. Report all drawing errors, omissions and discrepancies to the architect.
4. This document may be issued in an uncontrolled CAD format to enable others to use it as background information to make alterations and/or additions. In that instance the file will be accompanied by a PDF version. It is for those making such alterations and additions to ensure that they make use of current background information. AHMM Ltd accepts no liability for any such alterations or additions to the background information or arising out of changes to background information which occur prior to alterations of additions being made.



ALLFORD HALL MONAGHAN MORRIS
ARCHITECTS Ltd
2ND FLOOR, BLOCK C, 5-23 OLD STREET LONDON EC1V 9HL
TEL 020 7251 5261 FAX 020 7251 5123 WEB WWW.AHMM.CO.UK

job title
William Street Quarter
drawing title / location
BLOCK D3
West, East, North & South Elevations

drawn by checked scale job status
GM CM 1 : 100@A1, 1:200@A3 10154 FINAL
drawing no. AHMM-WSQ-D3-EL-0205 revision C02