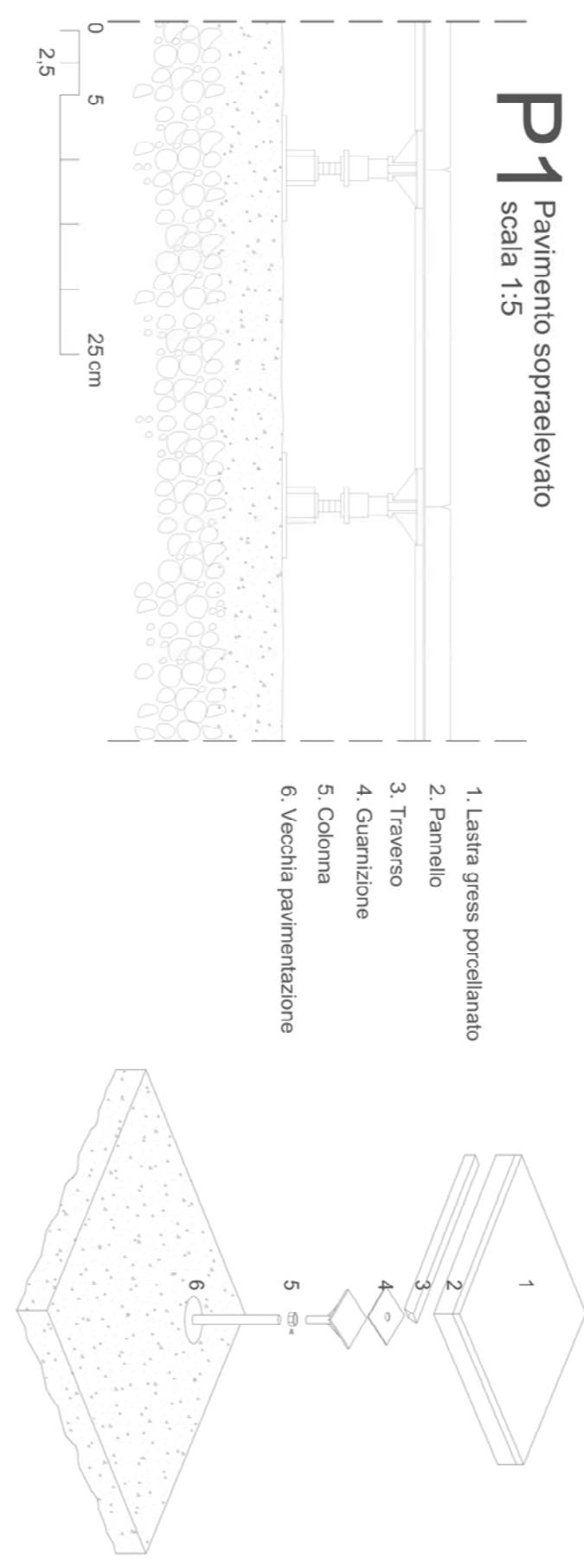
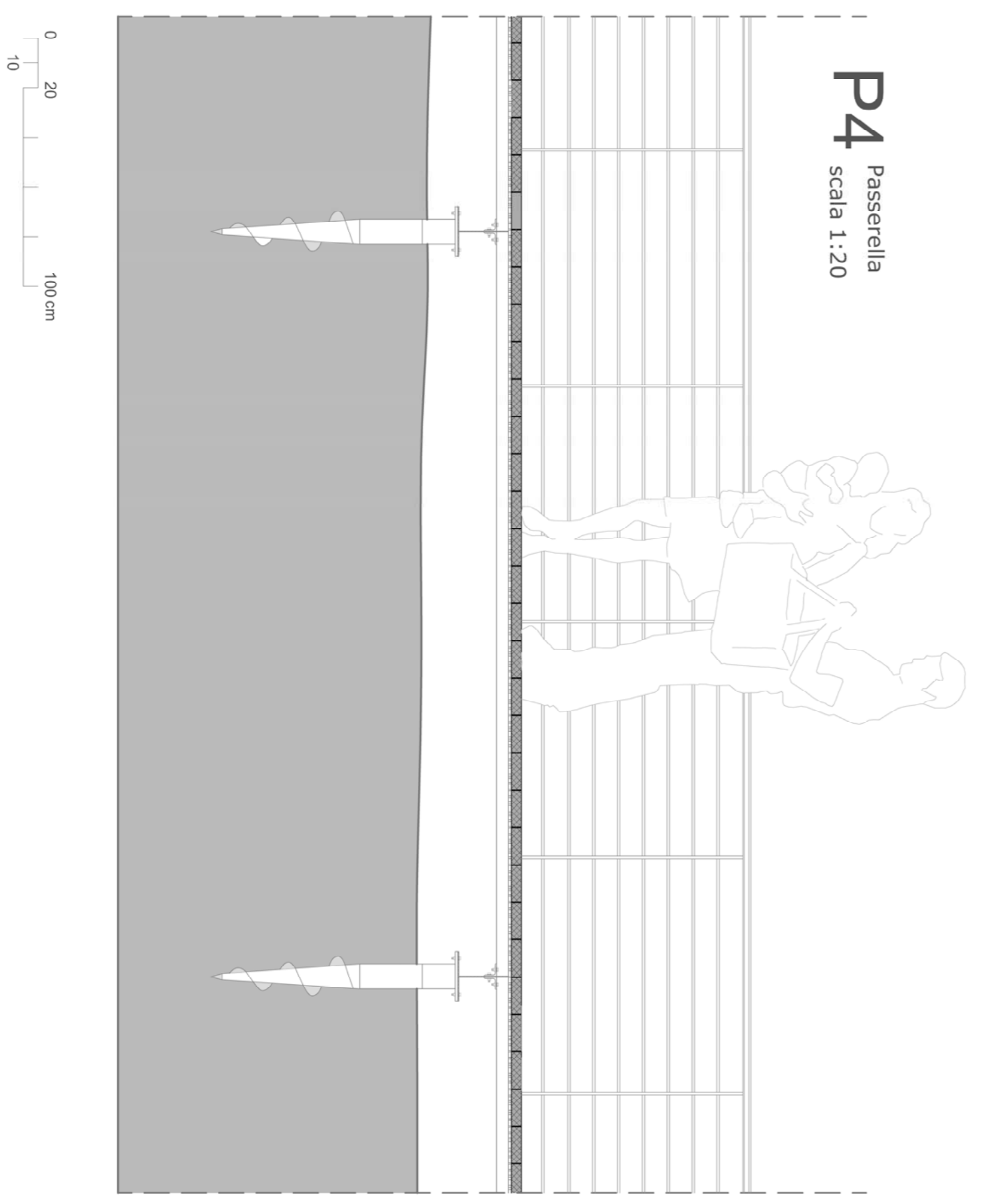


**P1** Pavimento sopraelevato  
scala 1:5

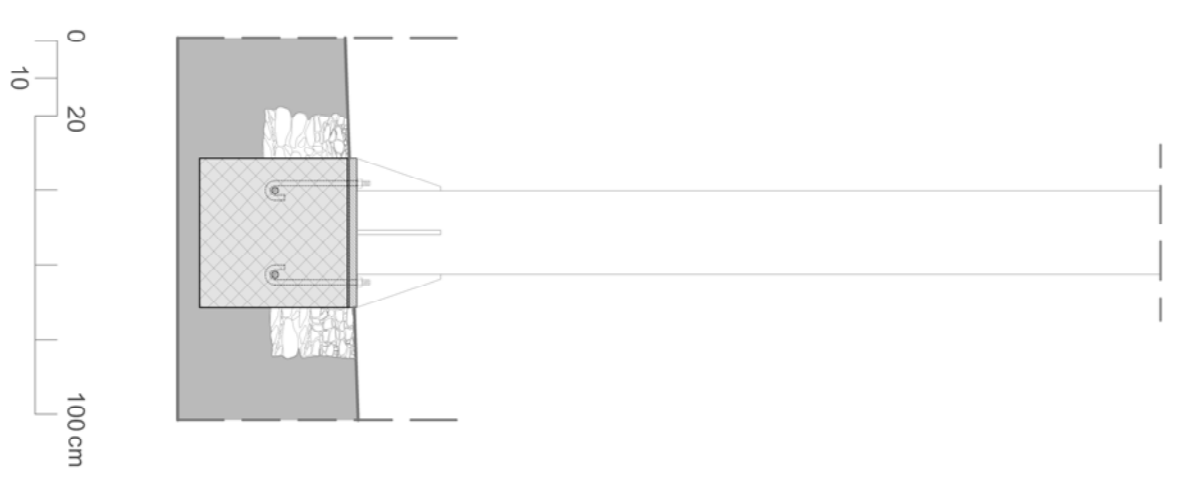


1. Lasta gress porcellanato
2. Pannello
3. Traverso
4. Guarnizione
5. Colonna
6. Vecchia pavimentazione

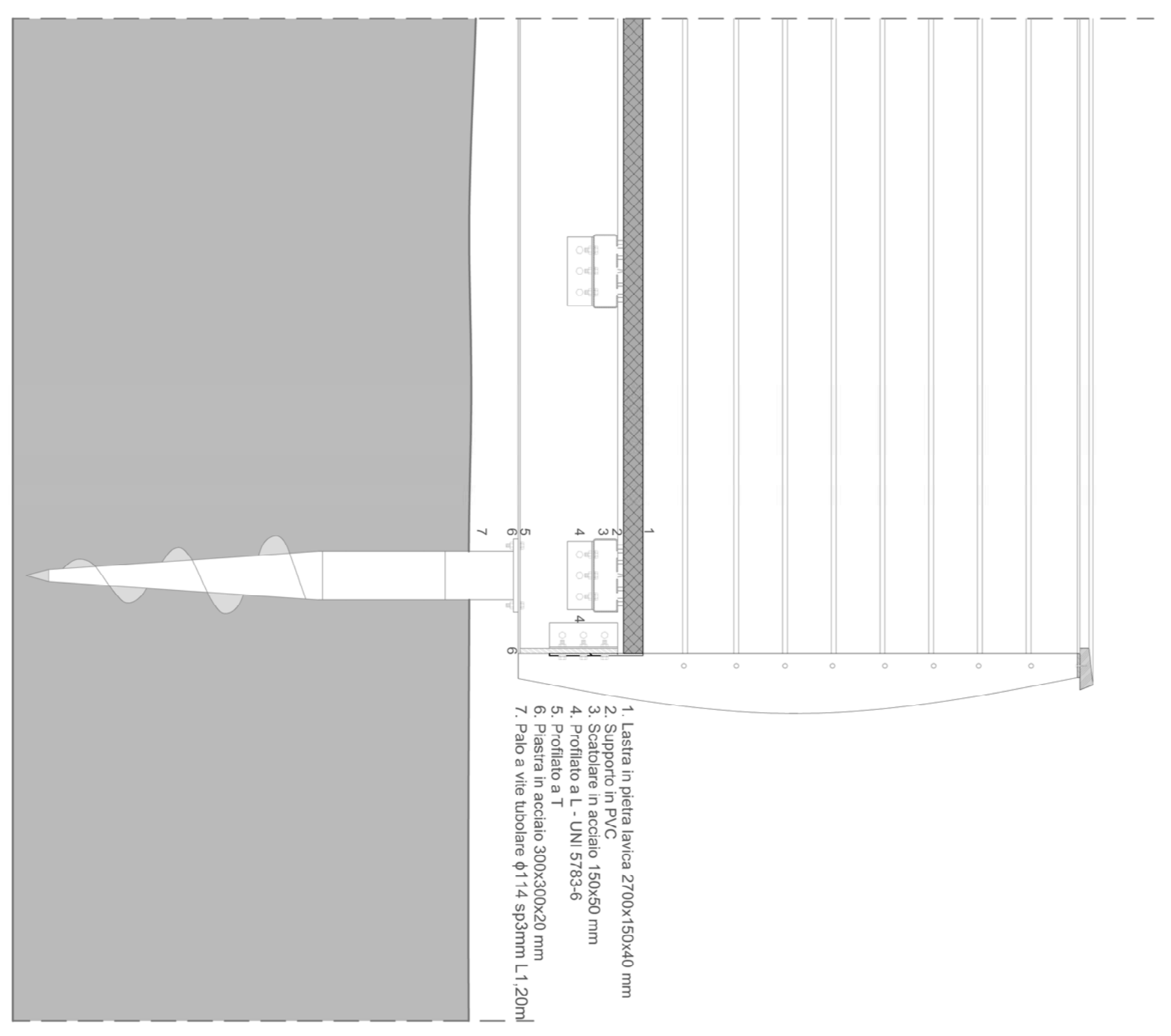
**P4** Passerella  
scala 1:20



**P5** Nodo pilastro plinto  
scala 1:20

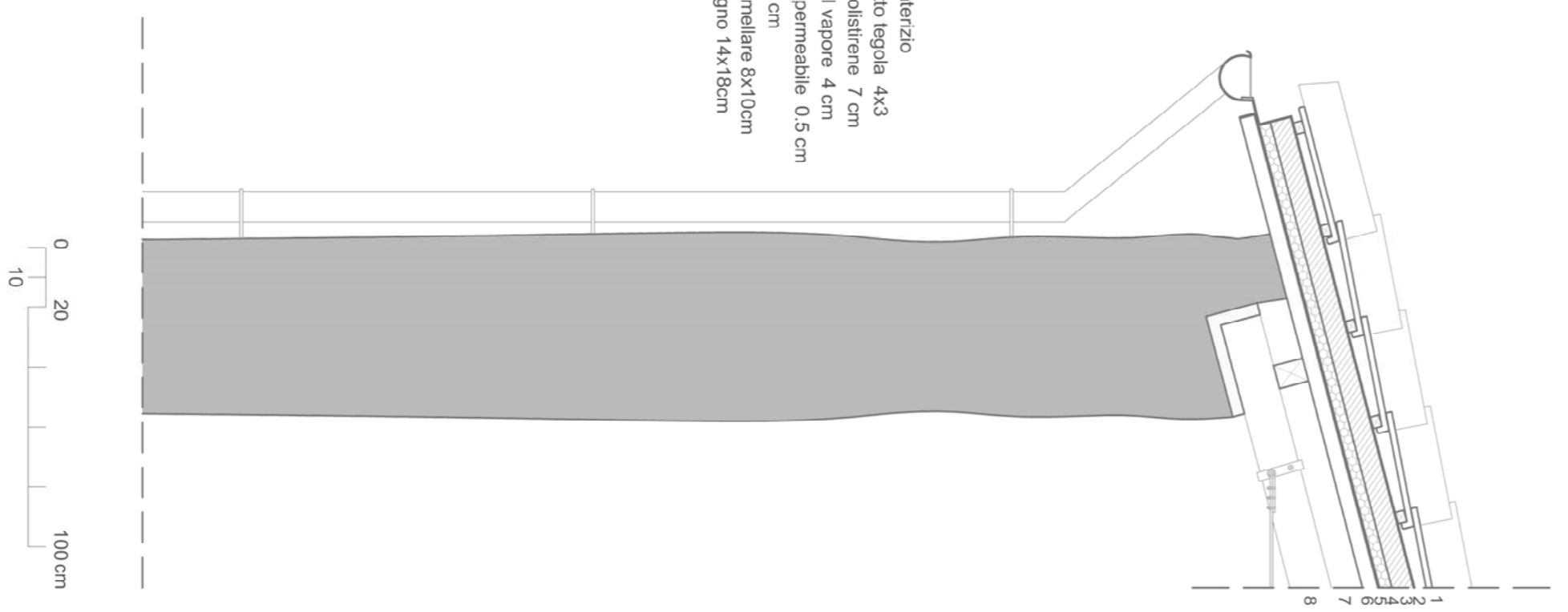


**P2** Pavimentazione esterna  
scala 1:10



1. Lasta in pietra lavica 2700x150x40 mm
2. Supporto in PVC
3. Scatolone in acciaio 150x50 mm
4. Scatolone in PVC
5. Profilo a T - UNI 5155/8
6. Pista in acciaio 300x300x20 mm
7. Palo a vite tubolare  $\phi$ 114 sp3mm L1,20m

**P3** Tetto ventilato  
scala 1:20



1. coppi in laterizio
2. listello sotto tegola 4x3
3. isolante polistirene 7 cm
4. barriera al vapore 4 cm
5. guaina impermeabile 0,5 cm
6. lavatoio 5 cm
7. travetto lamellare 8x10cm
8. trave in legno 14x18cm