

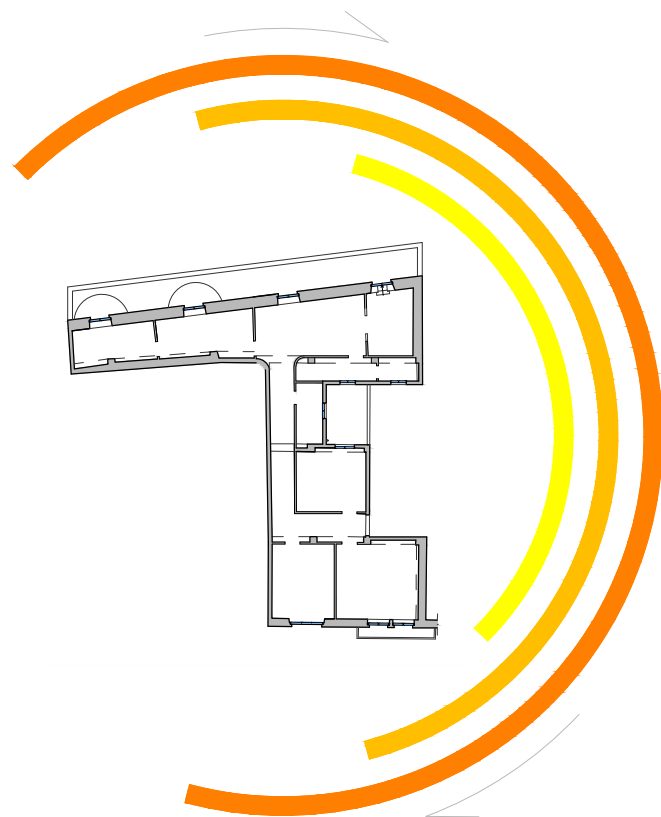


LEGENDA :




①	Ingresso/corridoio	18.00 mq
②	Soggiorno	17.75 mq
③	Camera 1	13.00 mq
④	Camera 2	12.20 mq
⑤	Camera 3	8.60 mq
⑥	Camera 4	11.60 mq
⑦	Pranzo	17.15 mq
⑧	Cucina	8.40 mq
⑨	Ripostiglio	5.00 mq
⑩	Servizio	2.60 mq
⑪	Bagno	4.70 mq
⑫	Balcone	2.35 mq

Totale netto abitazione	119.00 mq
Totale esterni	2.35 mq
Totale complessivo	121.35 mq

Illuminazione naturale



LEGENDA :

 Estate	 Primavera / Autunno	 Inverno
--	---	---

Tramas
architettura design web
Via Regina Elena, 23 09124 Cagliari
info@studiotramas.com
www.studiotramas.com

PROGETTISTA
Arch. Mauro Soddu
cel 3492168169
soddu@studiotramas.com
p.iva 03387020922
COLLABORATORI
Arch. Laura Oggiano

COMMITTENTE
Fam. Cuccheddu

CAM House

Via Santa Margherita, 7 - Cagliari
30/09/2019

STATO DI FATTO

Pianta quotata



01