

C. A. Ferreyra & Associates

Architects + Planners

P 340 774 0745 M 340 998 3813

ferreyraarchitects@yahoo.com

www.cafarchitects.com





C.A.Ferreyra & Associates

Architects

Our firm is committed to Design excellence. Aiming to a pragmatic architecture that takes on the creation of socially, economically and environmentally adequate places, engaging the spirit of each owner and site.

Principals, Carlos and Virginia Ferreyra graduated as Architects and Urban Designers in 1978 at Universidad Catolica de Cordoba in Argentina.

From 1979 to 1985 were principals at Ferreyra-Alvarez-Kudaka dedicated to commercial and residential architecture.

From 1981 to 1984, Carlos worked at the National commission for Atomic Energy, during the construction of a heavy water plant in Neuquén Province, Argentina.

In 1985 moved to Dallas, Texas. Carlos joined PBDC (Parsons Brinkerhoff – De Leuw Cather Joint venture) for DART (Dallas Area Rapid Transit) project, designing Dallas metro. Virginia was a Design Architect at a firm dedicated to work for the Dallas Independent School District.

In 1989 established C.A.Ferreyra & Associates in St. Thomas. We were in charge of the restoration for Frenchman's Reef Hotel and morning Star Resort after hurricane Hugo. And continued to be their architects until it was sold to Marriott.

In the Virgin Islands we have an extensive Design portfolio, from small commercial to large luxury residential.

Commercial

Frenchman's Reef Hotel and Morning Star Resort restoration after hurricane Hugo.

Time Center Bldg. and Rodriguez Auto parts.

Franklin Bldg. renovation (USVI Government).

Napa Auto Parts Bldg.

Caesar's restaurant and conference center at Morning Star Resort

Bringing up to Code Frenchman's Reef Hotel, in particular exit design and fire protection system prior to Marriott acquisition.

Harbor view restaurant.

Dynasty-Dazzlers. 3stores.

Beverly's, jewelry store.

Extensive structural re pairs at Sapphire Village Condominiums.

80 Kronprindsens Gade Bldg. renovation and new parking building - ex. 1st Penn Bank.

Concessions International, Bar at baggage claim area at St. Thomas airport.

Field offices for Vitelco telephone company.

Offices for BPUSVI (EDC Company).

Residential

Interior Design

Master Planning

Construction Supervision





Plantation Manor house





Plantation Manor house





Plantation Manor house





Plantation Manor house





Marienhoj house





Marienhøj house





Marienhoj house





Haven Sight house - under construction





Haven Sight house - under construction





Haven Sight house - under construction





Contant house– under construction





Contant house– under construction





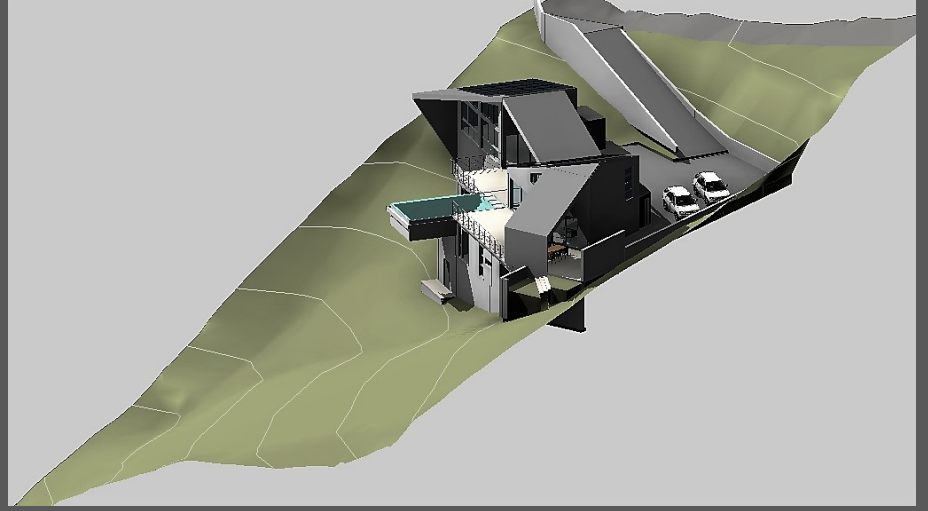
Contant house– under construction





Origami house—when finished





Origami house—when finished





Origami house—phase 1





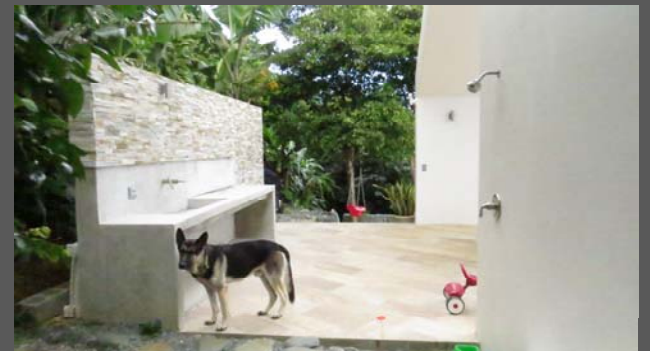
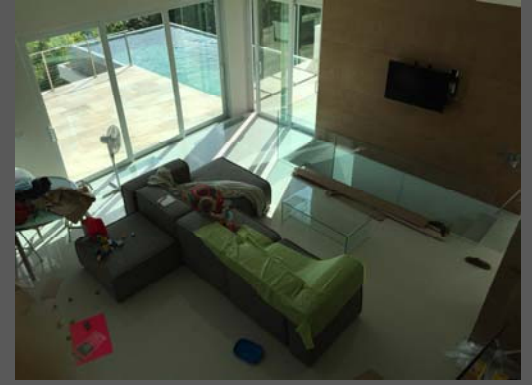
Origami house—phase 1





Origami house—phase 1





Origami house—phase 1





Minsgunst house—under construction





Minsgunst house—under construction





Water Point house





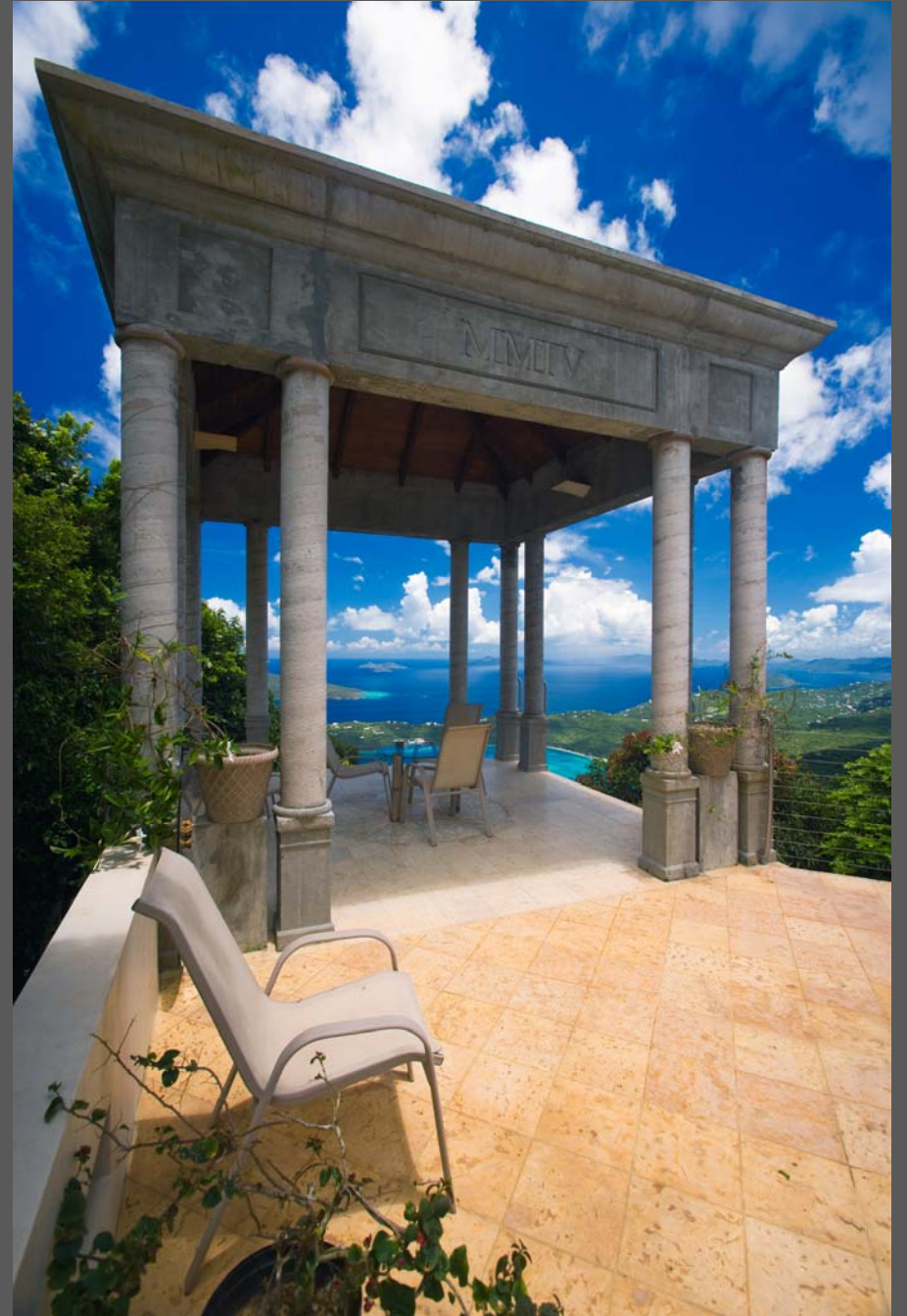
Water Point house





Buena Vista





Buena Vista





Buena Vista





Frenchman's Bay house—under construction





Frenchman's Bay house—under construction





Frenchman's Bay house—under construction



