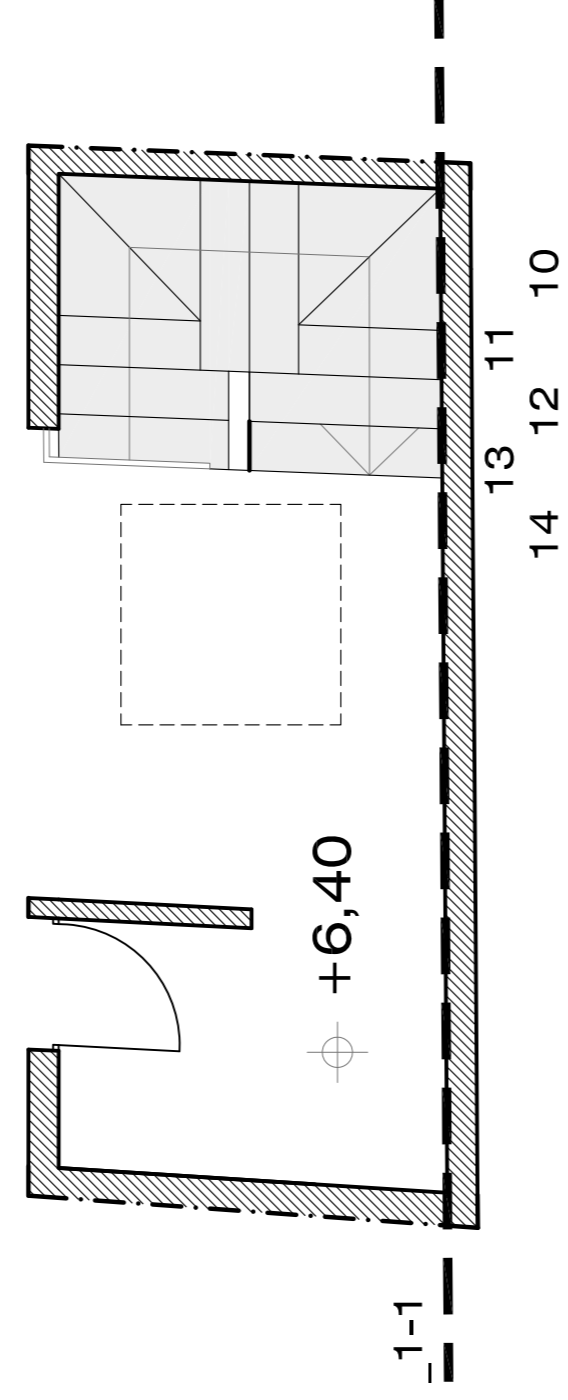
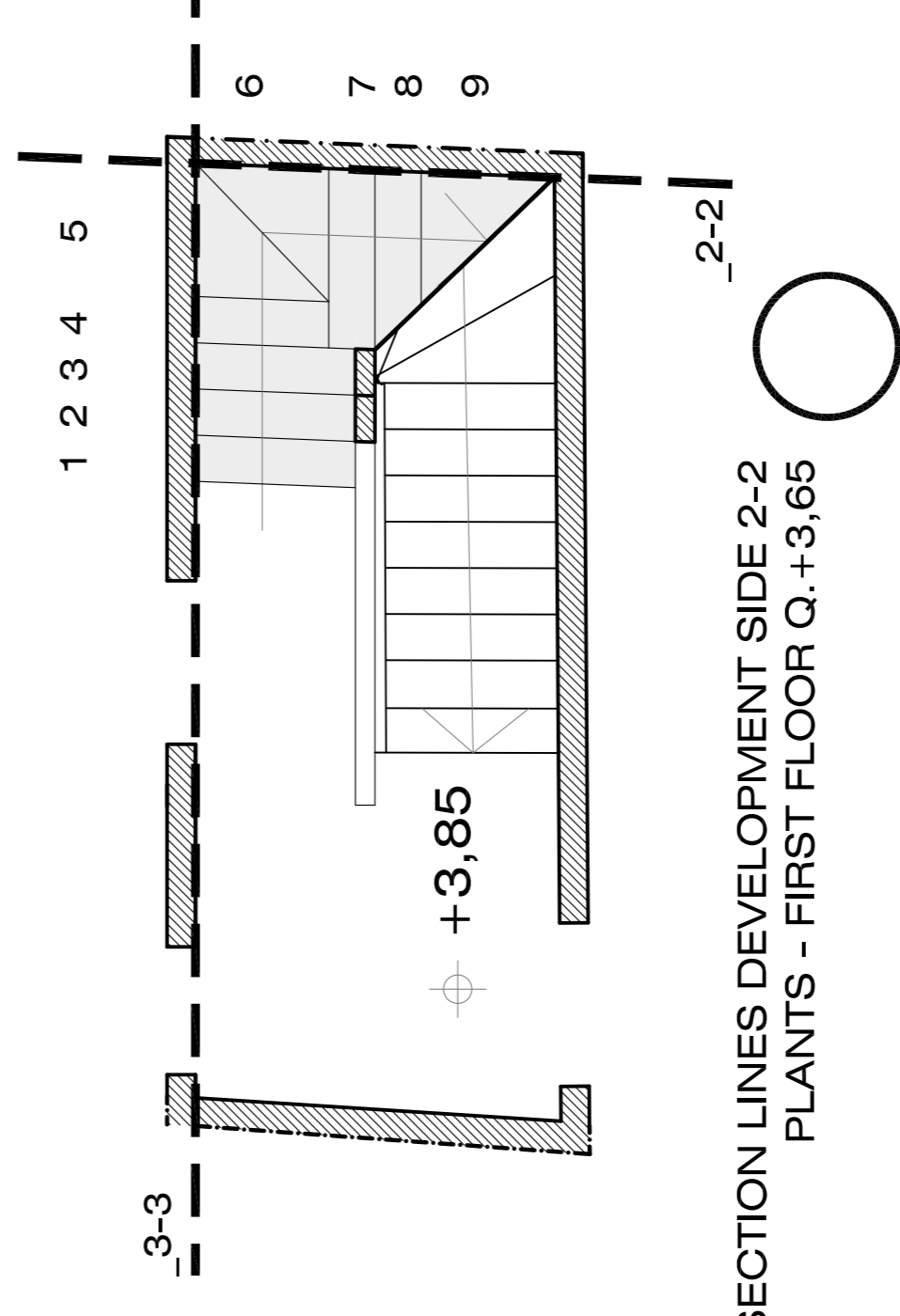


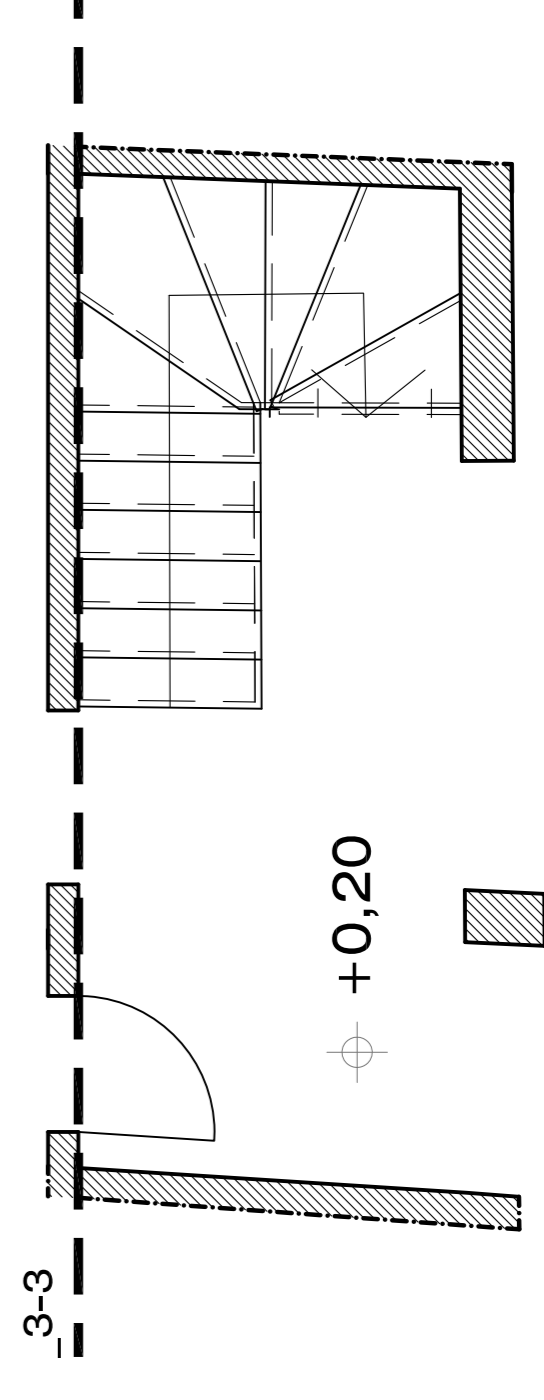
1:100\_PLANTS ON THE DIFFERENT LEVELS  
WITH NEW STAIR HIGHLIGHTED



DISECTION LINES DEVELOPMENT SIDE 1-1  
PLANTS - ATTIC FLOOR Q.+6,40



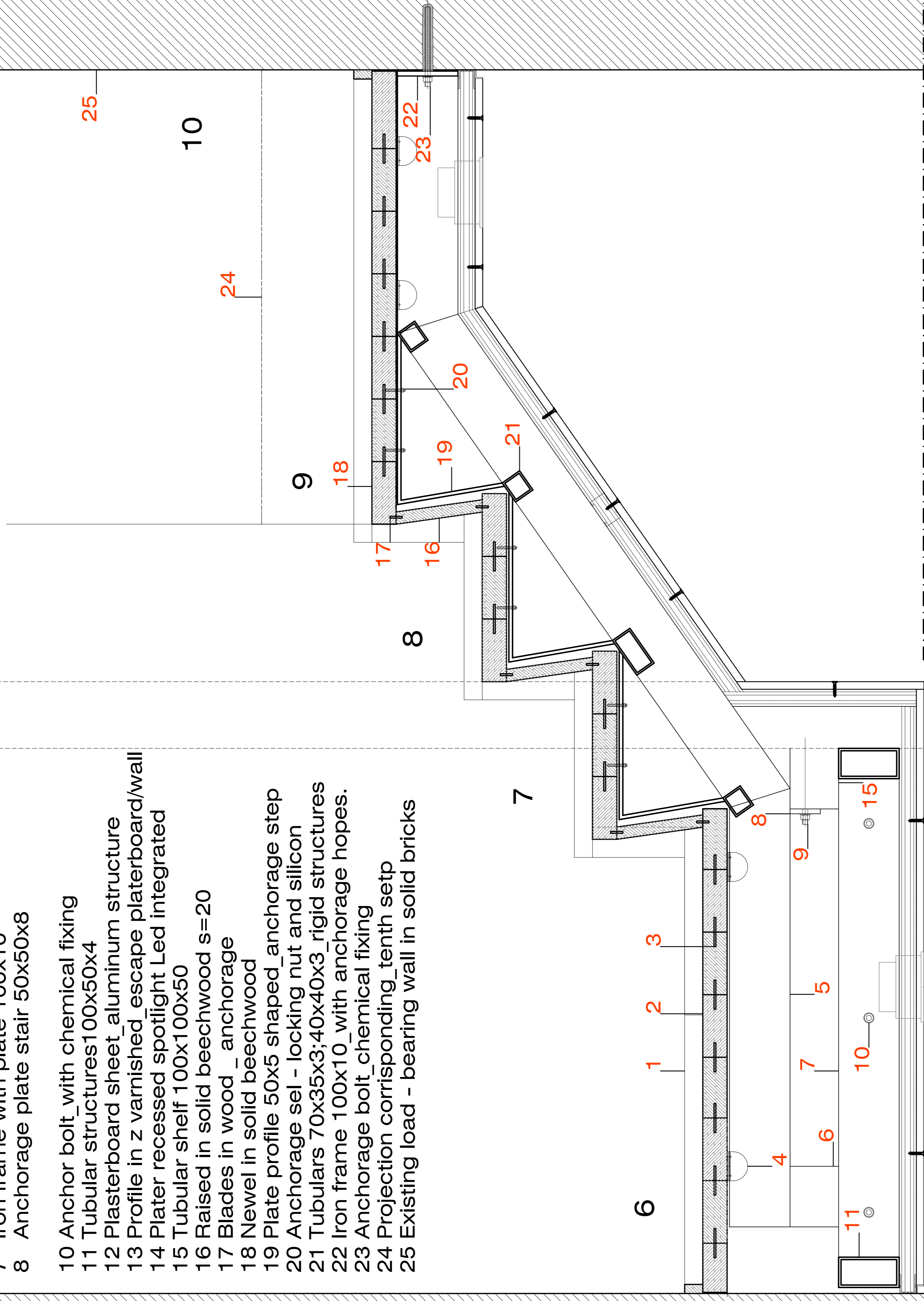
SECTION LINES DEVELOPMENT SIDE 2-2  
PLANTS - FIRST FLOOR Q.+3,65



SECTION LINE DEVELOPMENT SIDE 3-3  
1:25\_PLANTS - GROUND FLOOR Q.+0,20

- 1 Baseboard wood
- 2 Steps mounted in blades\_Beechwood
- 3 Junction blades
- 4 Anchorage adjunct with self - locking nut
- 5 Tubular structures 100x50x4
- 6 Tubular shelf 100x100x50
- 7 Iron frame with plate 100x10
- 8 Anchorage plate stair 50x50x8
- 10 Anchor bolt\_with chemical fixing
- 11 Tubular structures 100x50x4
- 12 Plasterboard sheet\_aluminum structure
- 13 Profile in z varnished\_escape platerboard/wall
- 14 Plater recessed spotlight Led integrated
- 15 Tubular shelf 100x100x50
- 16 Raised in solid beechwood s=20
- 17 Blades in wood\_anchorage
- 18 Newel in solid beechwood
- 19 Plate profile 50x5 shaped\_anchorage step
- 20 Anchorage sel - locking nut and silicon
- 21 Tubulars 70x35x3;40x40x3\_rigid structures
- 22 Iron frame 100x10\_with anchorage hopes.
- 23 Anchorage bolt\_chemical fixing
- 24 Projection corresponding\_tenth setp
- 25 Existing load - bearing wall in solid bricks

Projection parapet element  
plasterboard\_strengththen  
\_anchorage handrail



WALL LATERAL SECTION 2-2  
1:4\_NEW STAIR: CONSTRUCTIVE DETAIL 2A\_2-2

WOOD USED  
BEECHWOOD COMPOUND REASSEMBLE TEMPERATURE STABILIZATION.