

## PAUL HERAUD HIGH SCHOOL IN GAP

### Energetic rehabilitation of Paul Heraud High School in Gap

PROJECT OWNER : Conseil Régional Provence-Alpes-Côte d'Azur, représenté par l'Agence Régionale d'Equipements et d'Aménagement (AREA-PACA)  
LOCALISATION : Gap (05)  
SURFACE : 12 800 m<sup>2</sup>  
AMOUNT OF THE WORKS: 7 200 000 € ht  
YEAR : livraison 2019  
TEAM : R. Jamot Architecte, Synapse Construction, Sigma Acoustique, C.Grillet Economie de la Construction, Socotec, Inddigo  
MISSION : Mission base + DIAG/REL/OPC/SYN//SSI  
PHOTOGRAPHY : M-C Lucat

---



# PAUL HERAUD HIGH SCHOOL IN GAP

Energetic rehabilitation of Paul Héraud High School in Gap

## PROJECT PRESENTATION

PROJECT OWNER : Conseil Régional Provence-Alpes-Côte d'Azur,  
Represented by "Agence Régionale d'Équipements et d'Aménagement "(AREA-PACA)  
LOCALISATION : Gap (05)  
SURFACE : 12 800 m<sup>2</sup>  
AMOUNT OF THE WORKS: 7 200 000 € ht  
YEAR : livraison 2019  
TEAM : R. Jamot Architecte, Synapse Construction, Sigma Acoustique, C.Grillet Economie de la Construction, Socotec, Inddigo  
WORKERS : THOMET (Gros Oeuvre), QUEYRAS TP, PROJISOL, LANDRAGIN, TOITURES MONTILIENNES,  
ALPES PROVENCE MENUISERIES, PNR, CAVEGLIA & MARCHETTO, AILLIAUD FRERES, INEO GAP, ACAF GAP, MARCELLIN & Cie,  
MISSION : Mission base + DIAG/REL/OPC/SYN//SSI  
PHOTOGRAPHY : M-C Lucat

The main object of this project is the energetic renovation of the Paul Héraud High School in Gap , France , in order to reduce by 50% the energetic consumptions and to get the gold level for the BDM label . Last November, we obtained this BDN label gold level for the realization phase . In addition to the initial program , The project dealt with the compliance upgrade for disabled persons and safety of the site , especially with the reorganization of the fore court and the entrance .The compliance upgrade for safety was established by the Region during the study of the project ( APD phase ) further to the Nice attacks . This operation was used for the definition of the Region reference document concerning the schools safety .

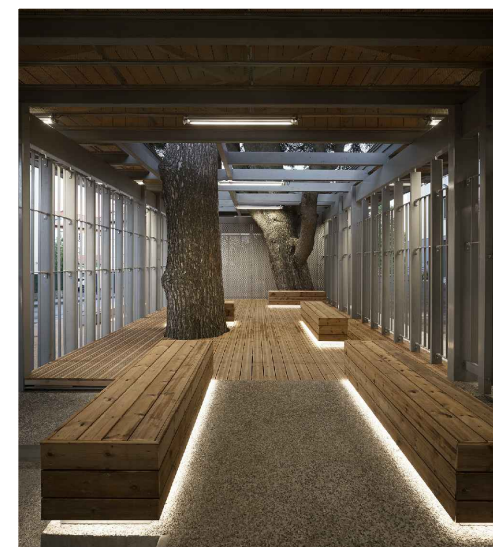
All the buildings are involved in this operation . It includes general education functions , technical education for cars and heavy trucks mechanics with a driving plateau , a gymnasium , a restaurant , the administration offices and the staff accommodation .The main works of energetic renovation consisted in reinforcing the building envelope 's thermal performances , in the same time for the façade , roof and attic , and high flooring of the crawl space . In order to do this , the exterior thermal insulation was reinforced and a solar protection adapted for each façade was created .This program gives a greater place to the use of bio-based materials especially employed for insulation .

Added to this , we offer main transformations for some premises such as the school library , the gymnasium cloakroom with the body-building room ,whose works allow both the energetic renovation and compliance upgrade for disabled persons .

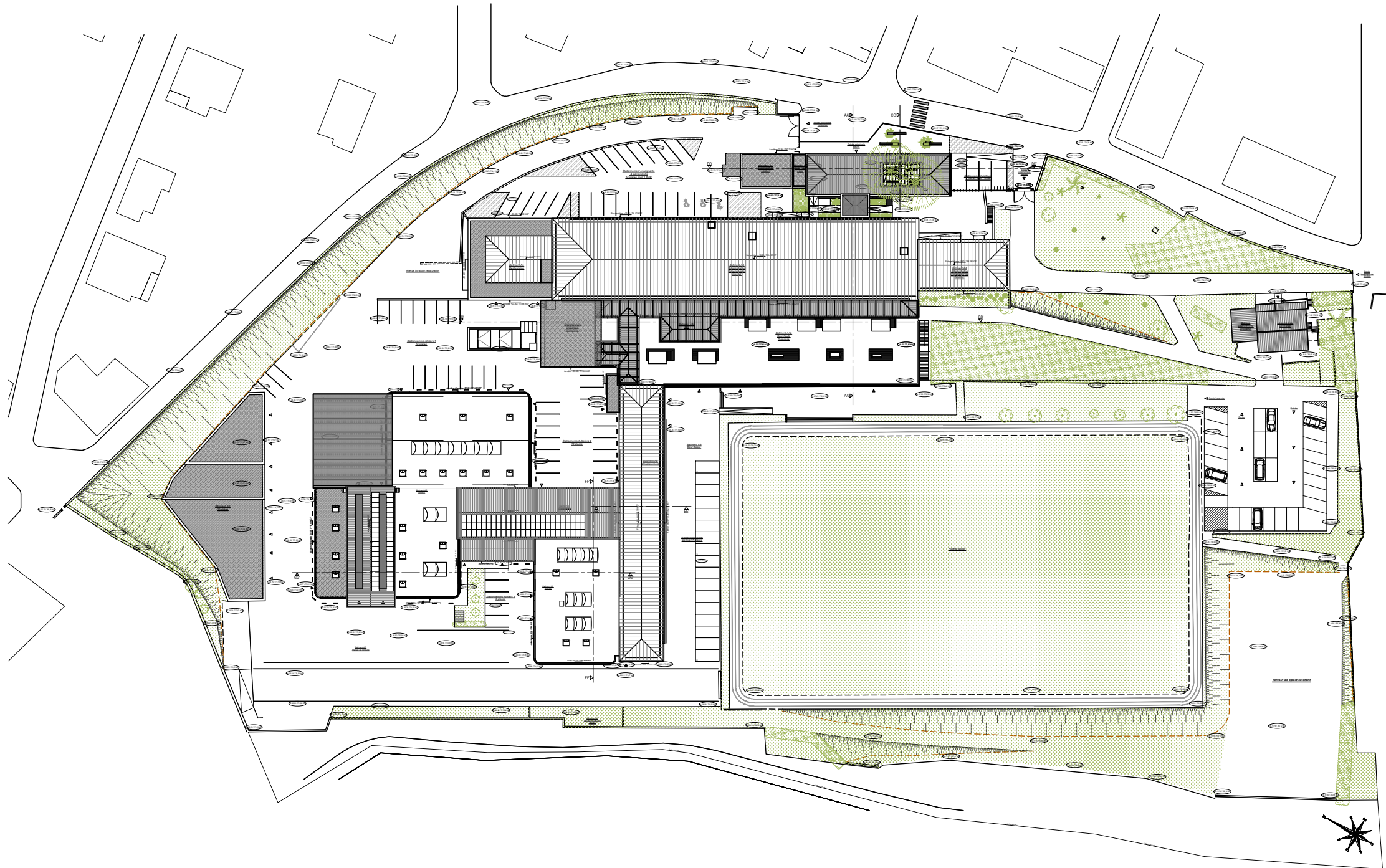
The new lay out of the forecourt , in addition with the compliance upgrade for disabled persons and safety of the site, aims to reconsider the entrance . The architectural and landscape party involves making use of the site coverage with the creation of a pedestrian space and a high canopy above the new lodge and a bike shed which shows the entrance to the public . The high canopy can be used as a waiting , talking and meeting space . It is located in a central position and it is scooped –out to the level of the two existing centenary cedars . As a key element of the composition , this canopy shows the entrance and offers a visual access as far as the high schoolyard and the far away landscape .The underface treatment of this canopy extends in the hall entrance up to the high schoolyard . Its expanded metal coating , champagne coloured , is the common thread from the main access to the buildings entrances .

The canopy was realized with a wood structure in laminated timber with a grey wainscot in such a way as to guarantee a tint stability of the work throughout the time . This same material is used as a solar protection , both vertical and horizontal , for the façades of the buildings . The volumes , for the lodge and the bike shed , are covered with a facing expanded metal , champagne coloured which covers the façades of buildings A and B as well . There is some touch in fanlight and apron wall of window , following the morse code .These elements create a rythm on façades of the existing buildings . In order to get an homogeneity in the treatment and a common reading for all the buildings , in spite of the strong slope of the site , the ground level is covered with a mineral facing Eternit .

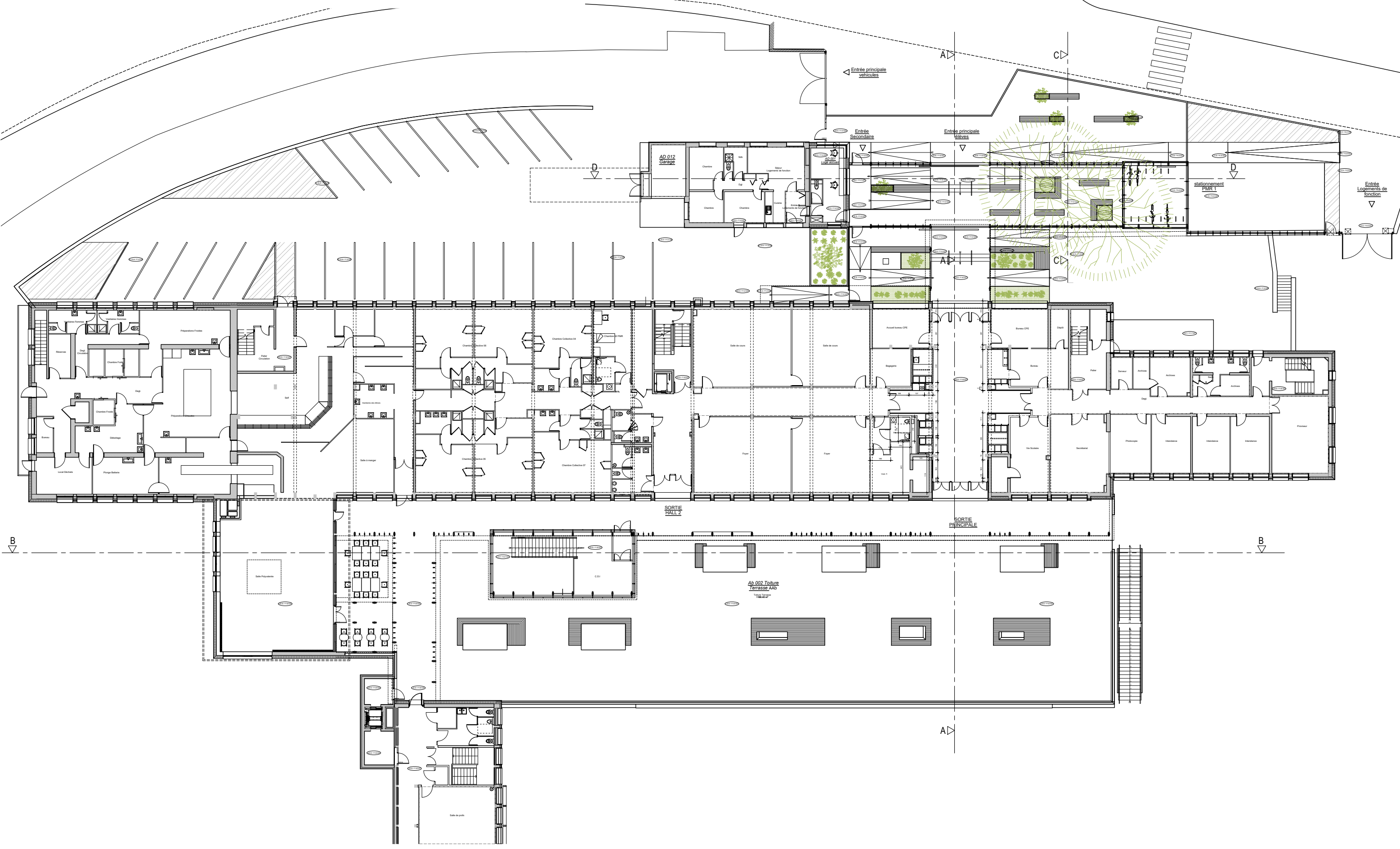
The spatial composition uses the street furniture like benches and flowers display compartments to structure meeting exterior spaces , for example the sas space under the two existing cedars and the future canopy . This cover creates a privacy space , highlighted with seats and platforms .



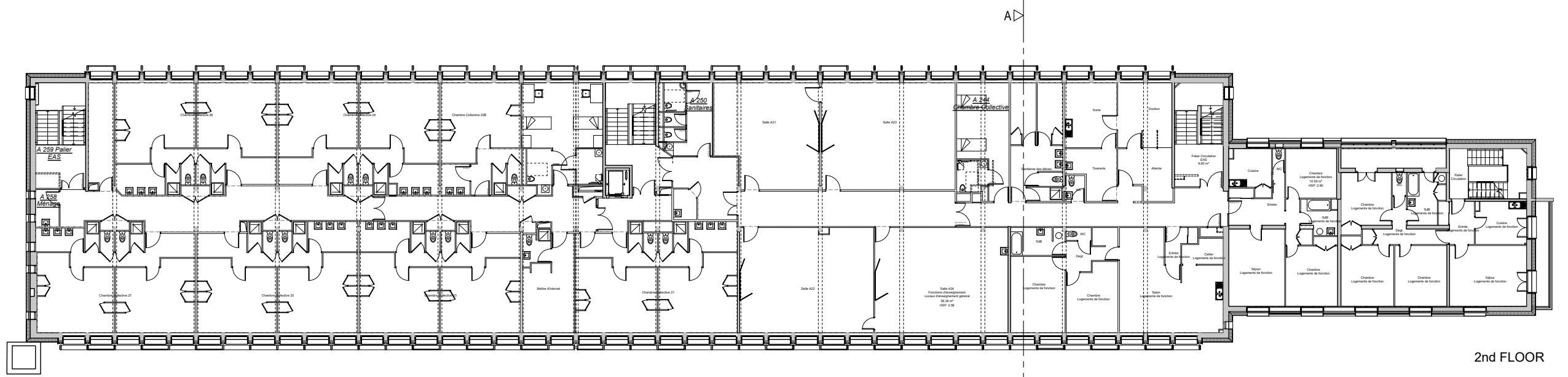
**PAUL HERAUD HIGH SCHOOL IN GAP**  
Energetic rehabilitation of Paul Heraud High School in Gap  
**GROUND PLAN**  
SCALE 1/1000



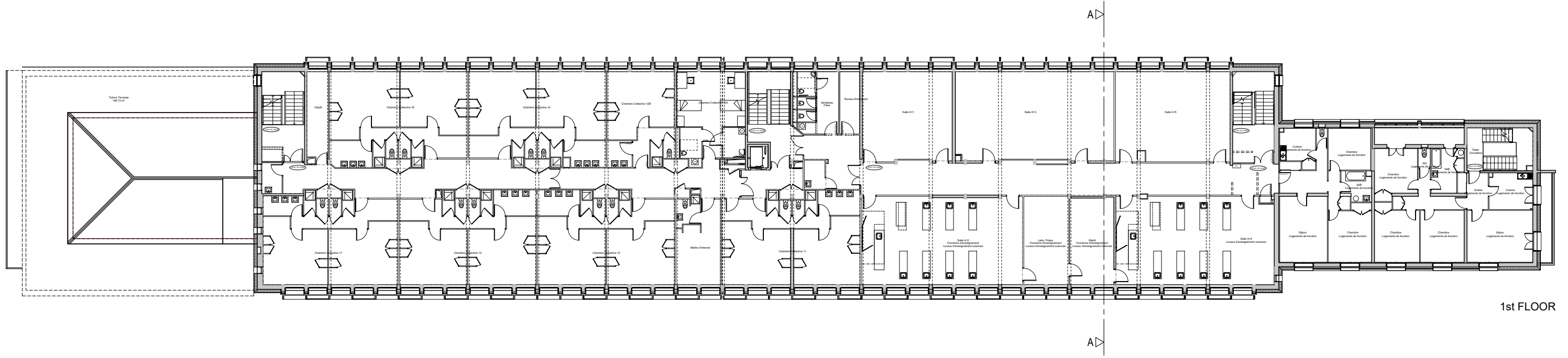
**PAUL HERAUD HIGH SCHOOL IN GAP**  
Energetic rehabilitation of Paul Heraud High School in Gap  
**BAT AA - GROUND FLOOR LAYOUT**  
SCALE 1/300



**PAUL HERAUD HIGH SCHOOL IN GAP**  
Energetic rehabilitation of Paul Heraud High School in Gap  
**BAT AA - 1st & 2nd FLOOR LAYOUT**  
SCALE 1/300



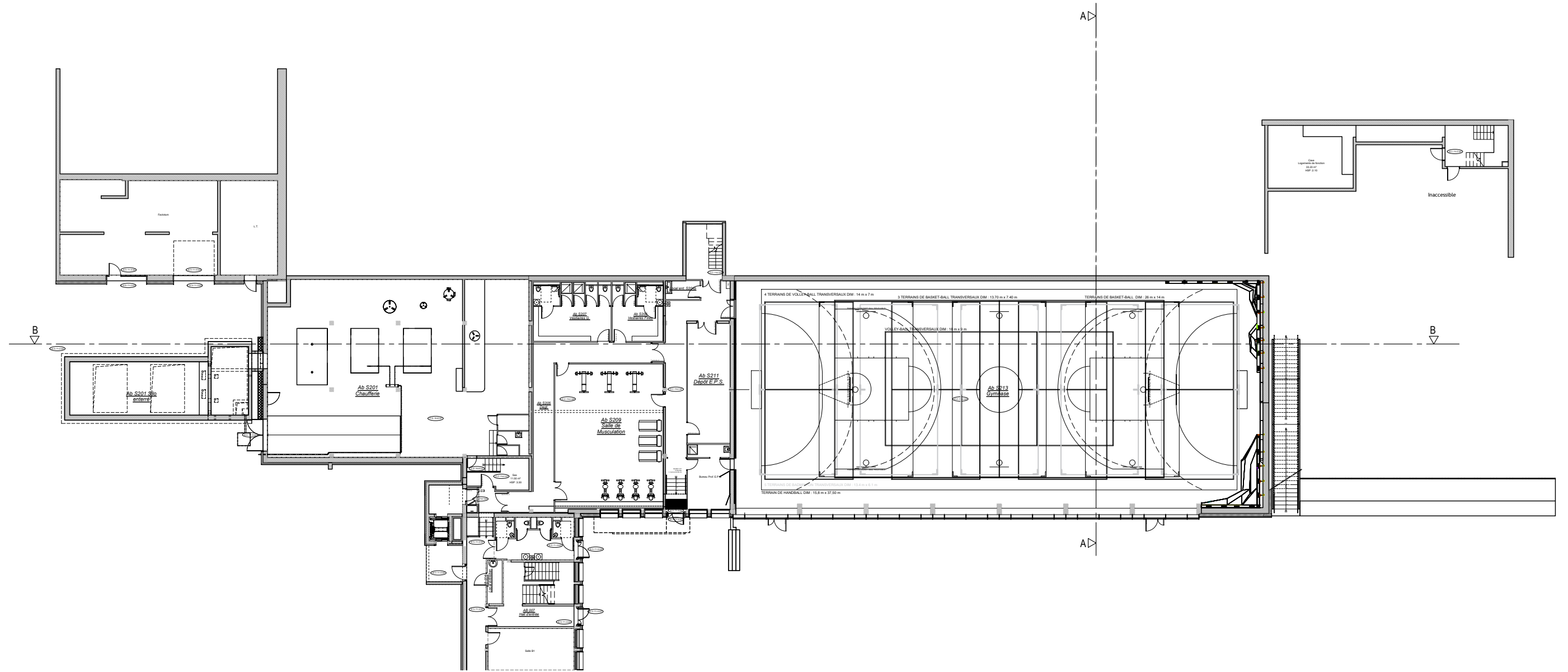
2nd FLOOR



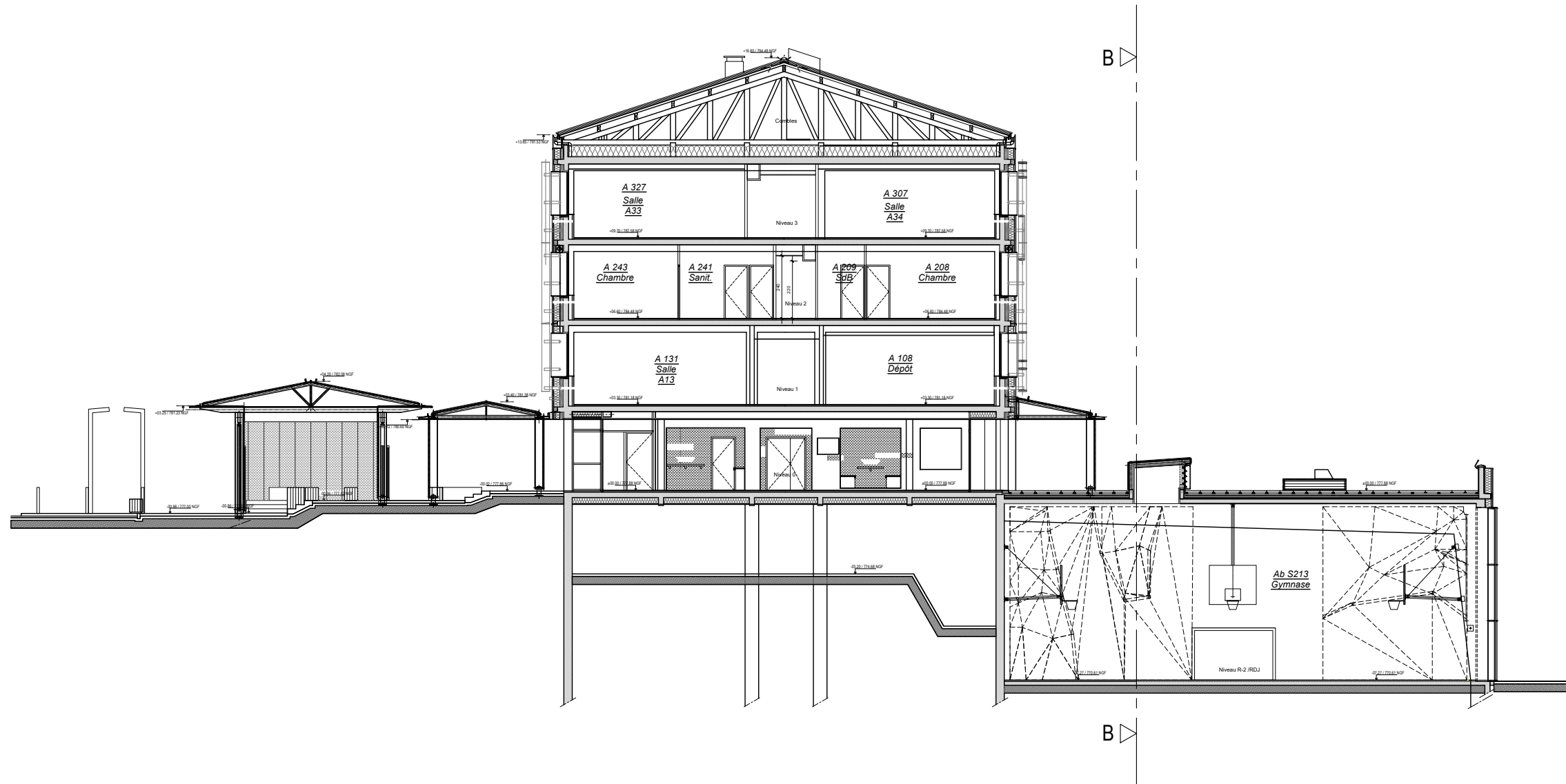
1st FLOOR



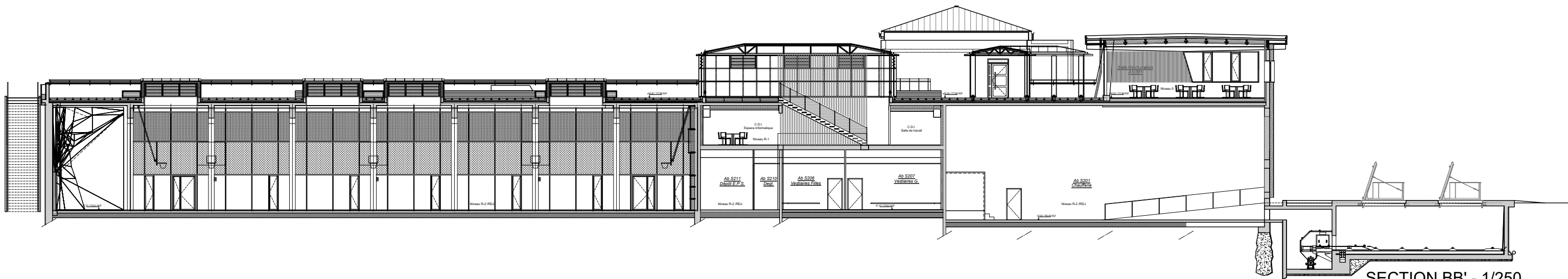
**PAUL HERAUD HIGH SCHOOL IN GAP**  
Energetic rehabilitation of Paul Heraud High School in Gap  
**BAT AA - 2nd BASEMENT FLOOR LAYOUT**  
SCALE 1/300



PAUL HERAUD HIGH SCHOOL IN GAP  
Energetic rehabilitation of Paul Héraud High School in Gap  
**BAT AA - SECTIONS AA' & BB'**  
SCALE 1/200 & 1/250



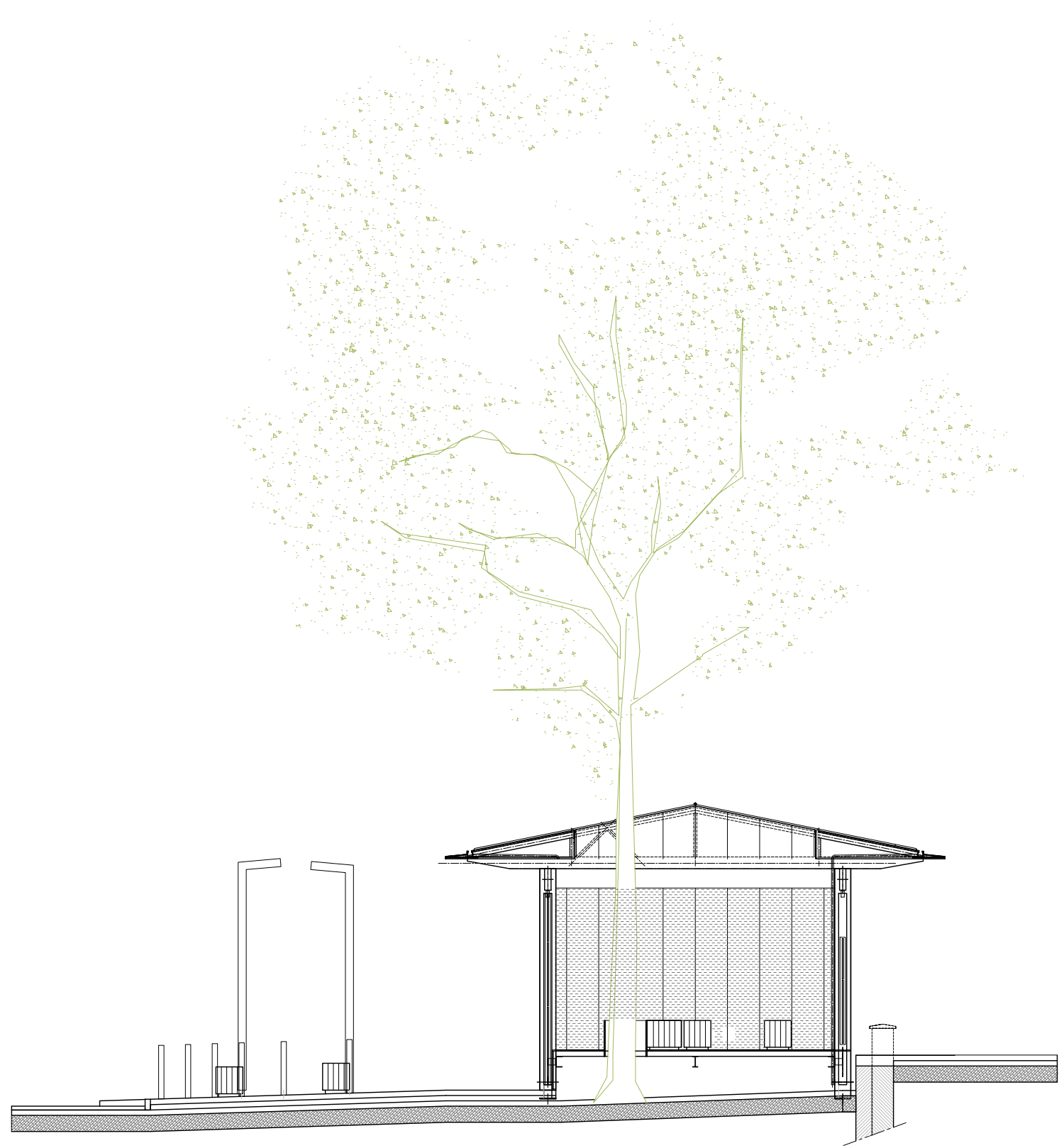
SECTION AA' - 1/200



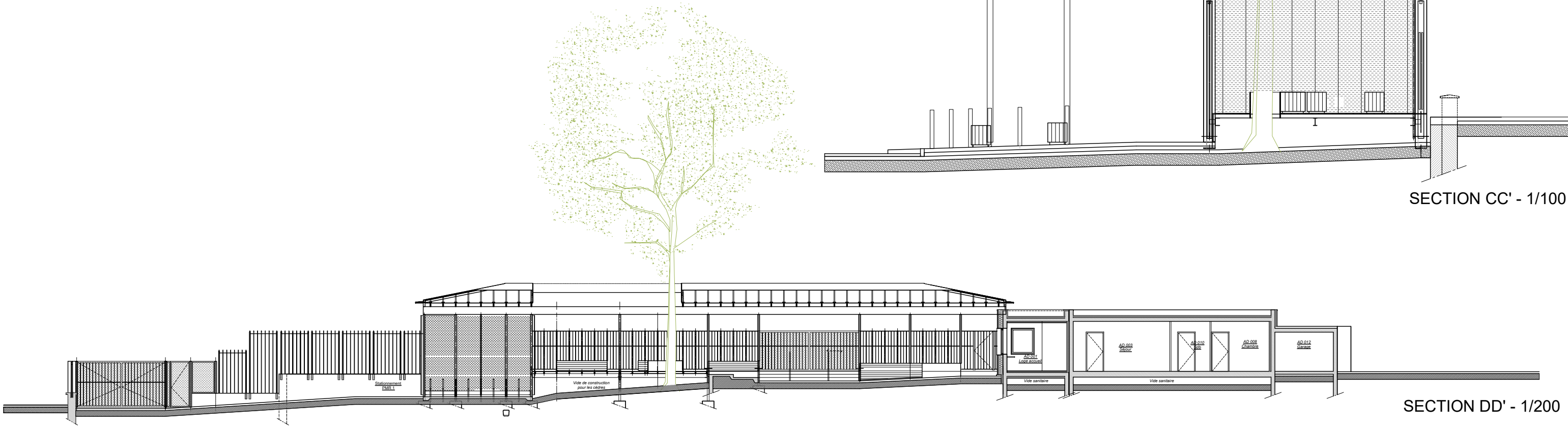
SECTION BB' - 1/250



**PAUL HERAUD HIGH SCHOOL IN GAP**  
Energetic rehabilitation of Paul Heraud High School in Gap  
**BAT AA - SECTIONS CC' & DD'**  
SCALE 1/100 & 1/200

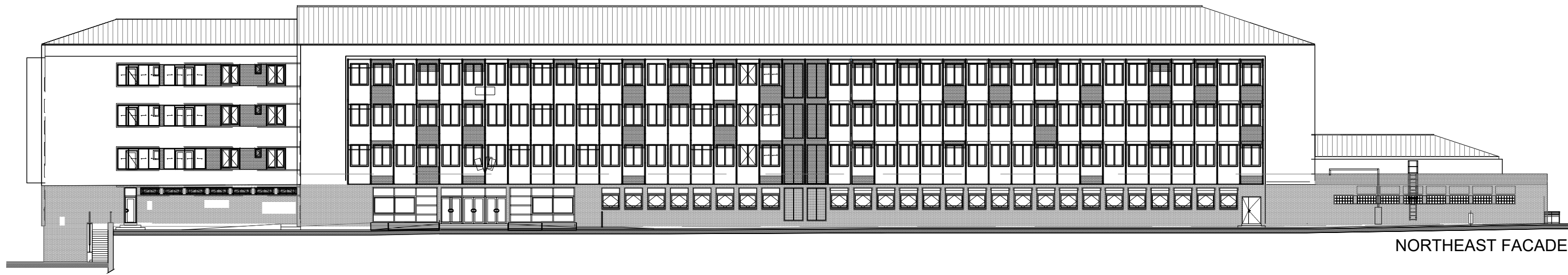


SECTION CC' - 1/100

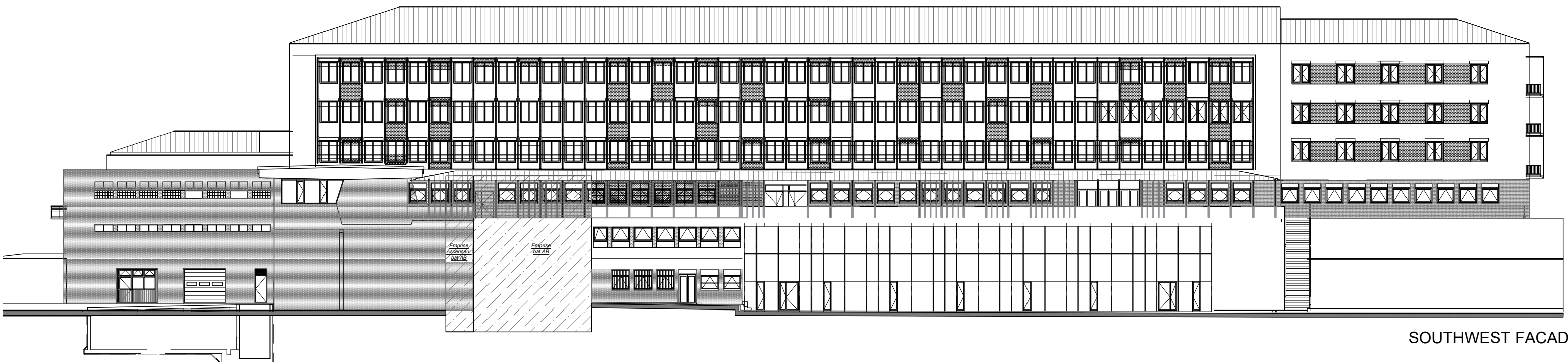


SECTION DD' - 1/200

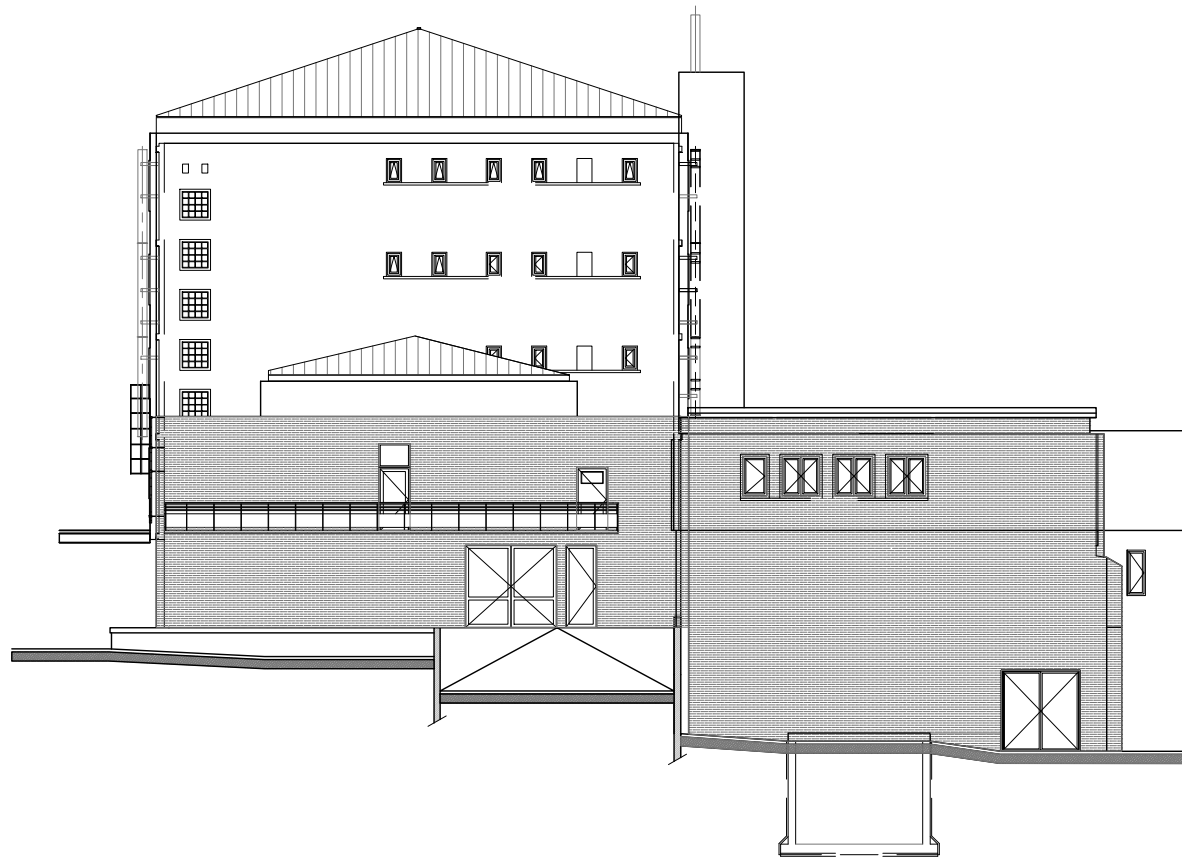
**PAUL HERAUD HIGH SCHOOL IN GAP**  
Energetic rehabilitation of Paul Heraud High School in Gap  
**BAT AA - FACADES**  
SCALE 1/300



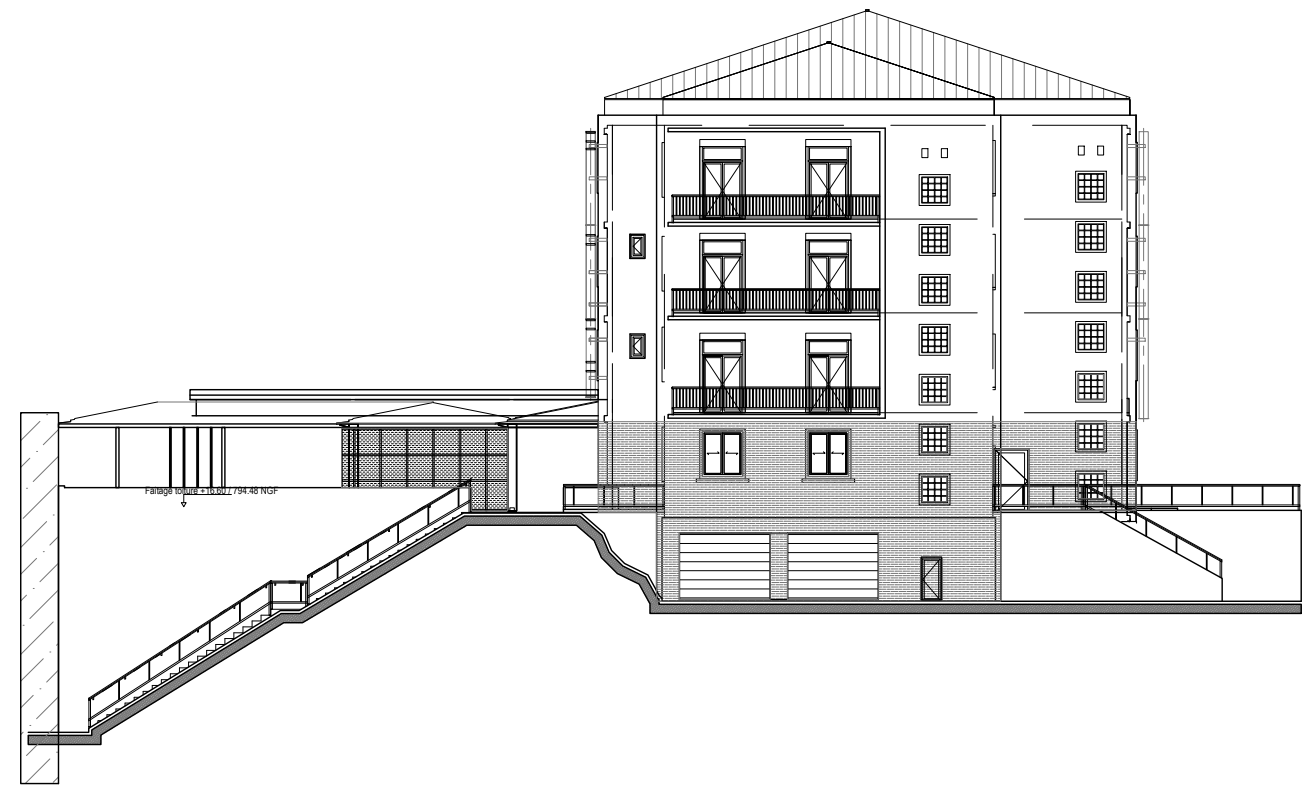
NORTHEAST FACADE



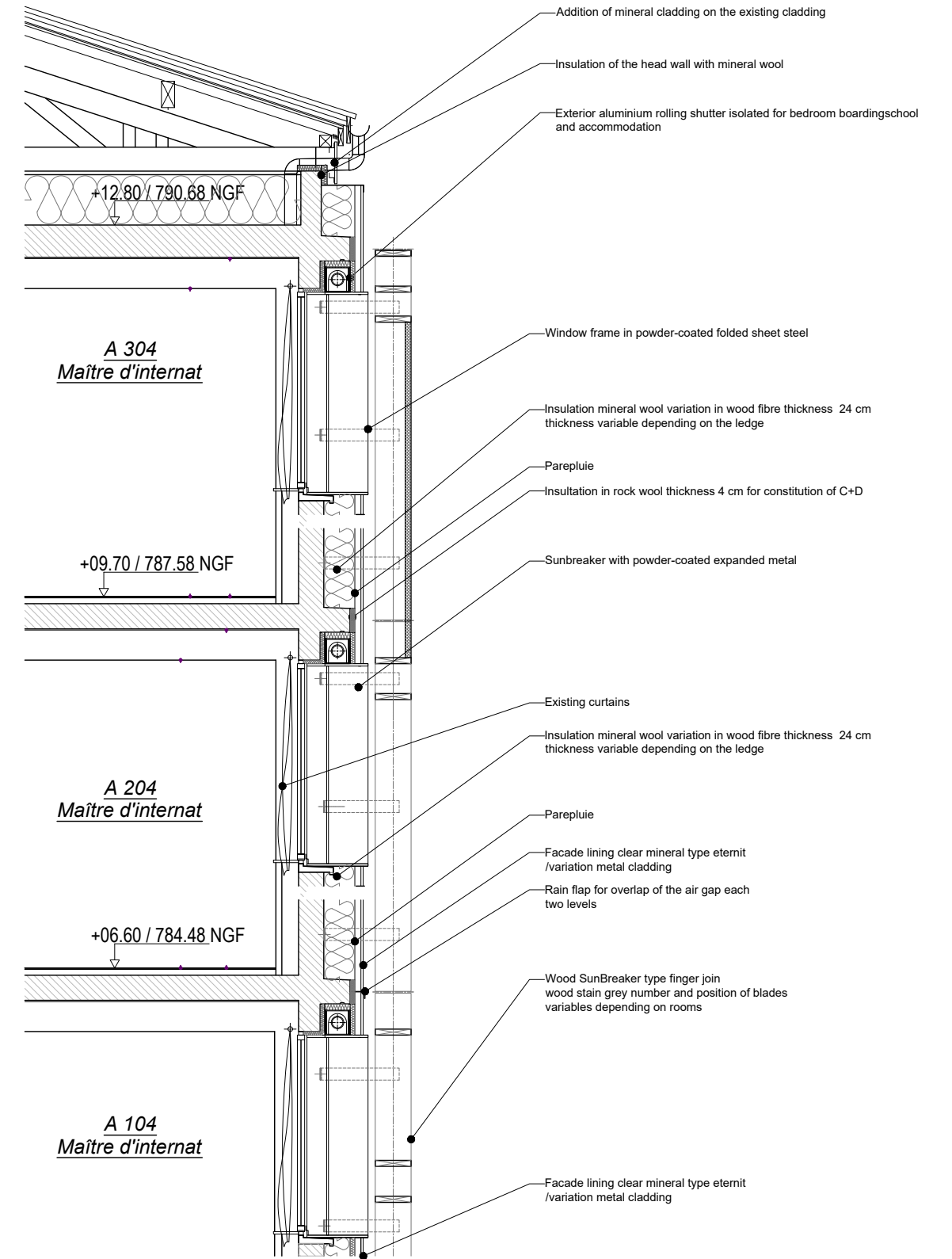
SOUTHWEST FACADE



NORTHWEST FACADE

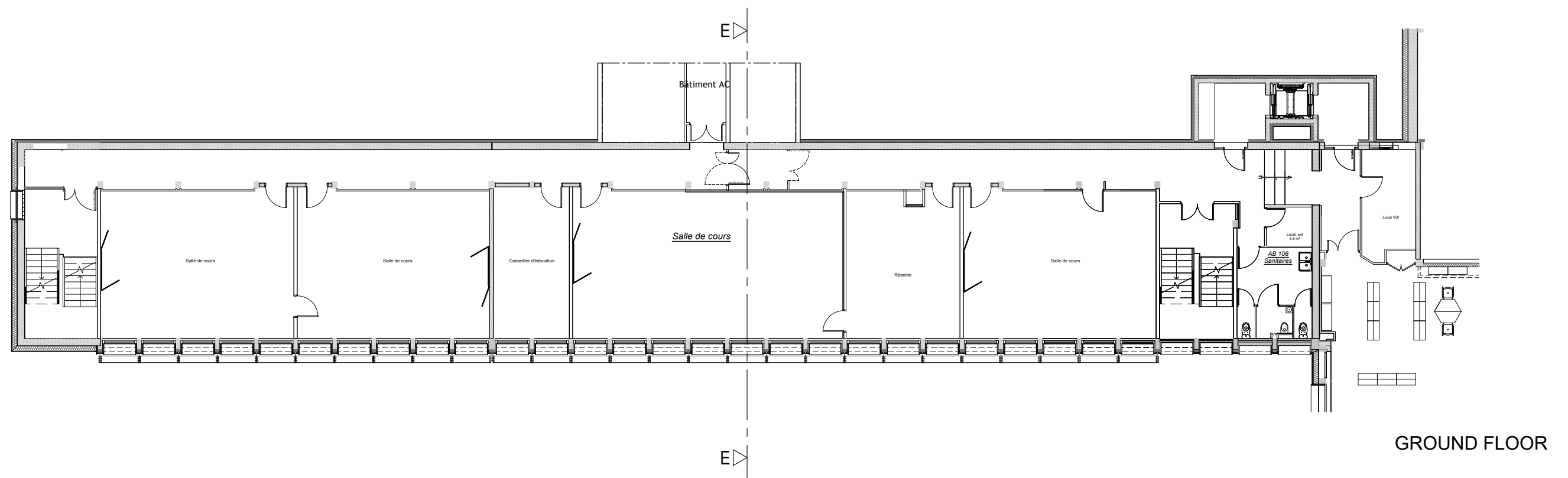
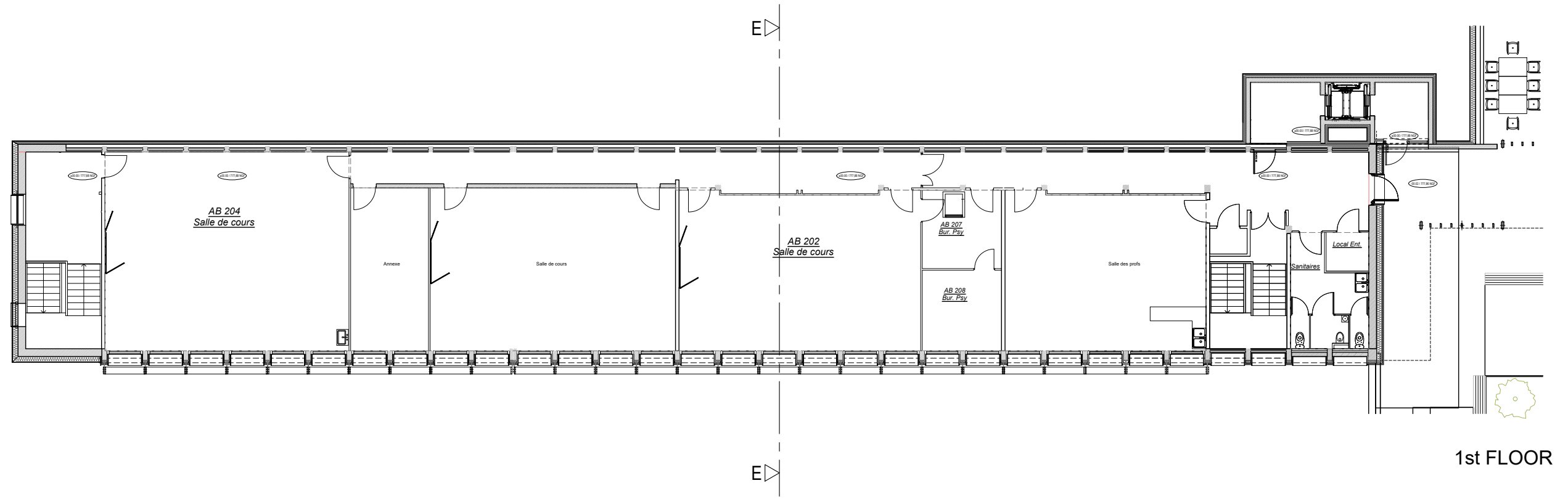


SOUTHEAST FACADE

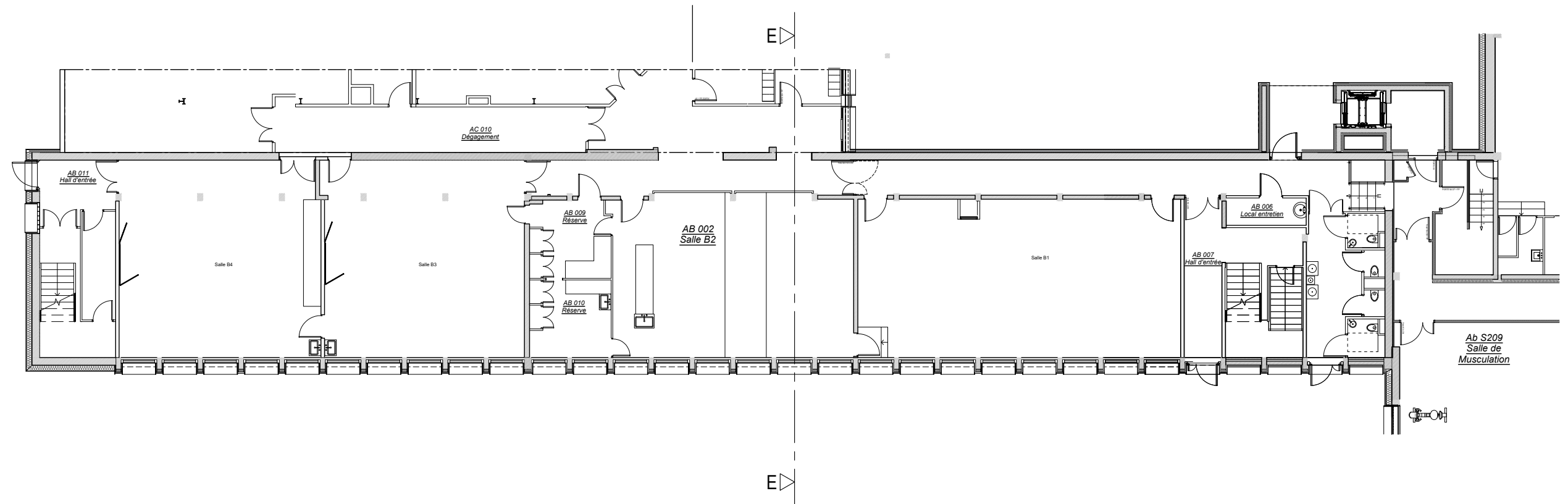


Section of facade project  
 Line 6/8 insulation strengthening

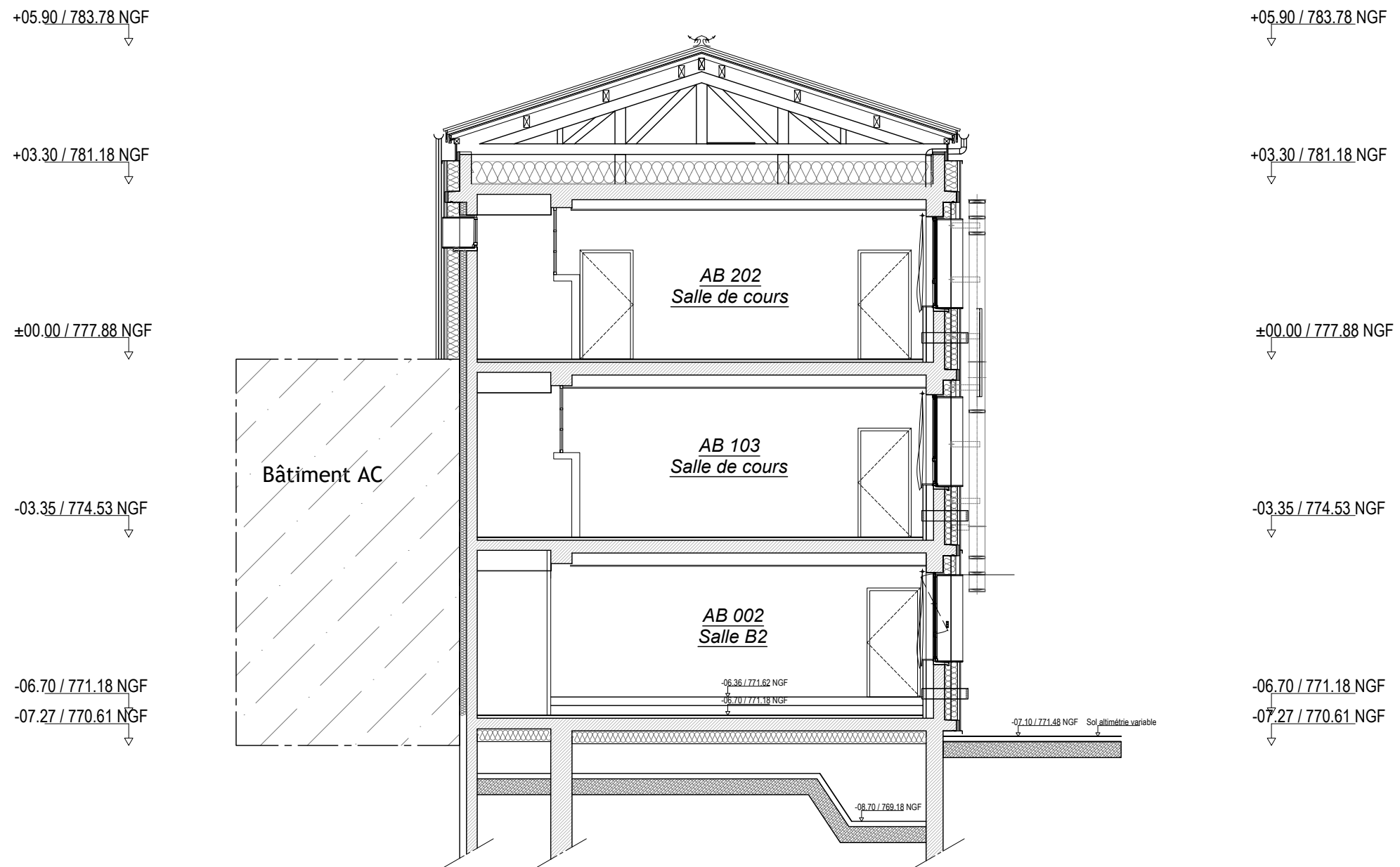
**PAUL HERAUD HIGH SCHOOL IN GAP**  
Energetic rehabilitation of Paul Heraud High School in Gap  
**BAT AB - GROUND FLOOR & BASEMENT LAYOUT**  
SCALE 1/200



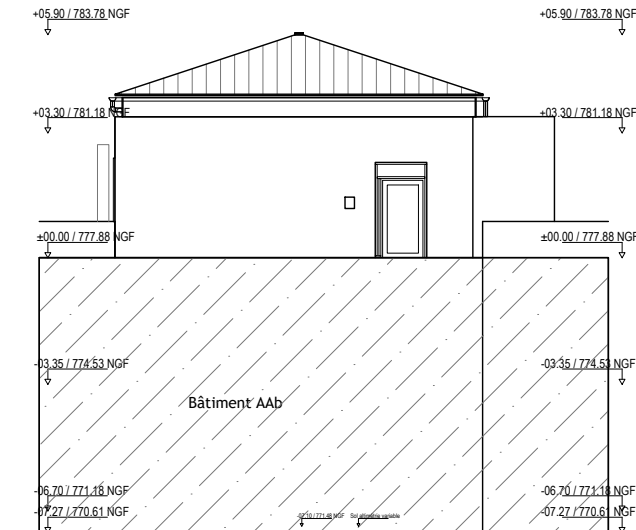
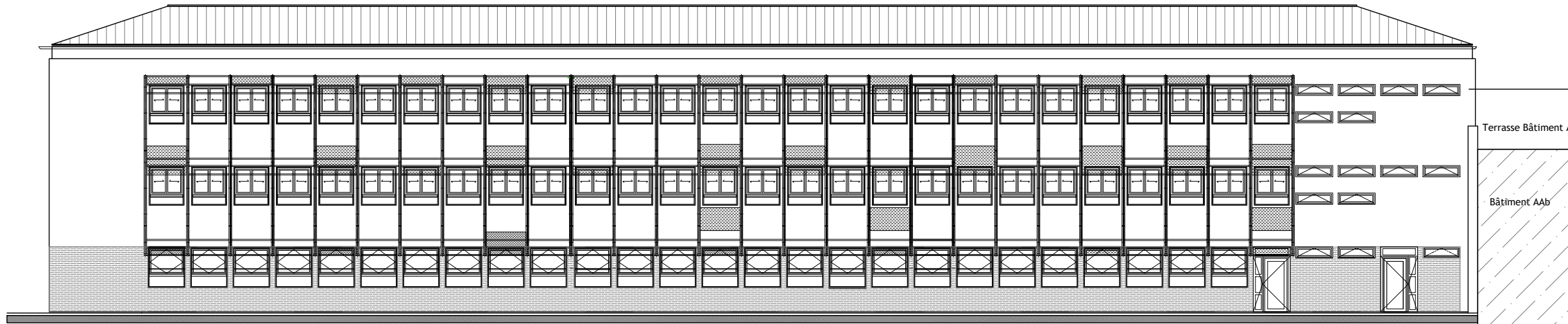
**PAUL HERAUD HIGH SCHOOL IN GAP**  
Energetic rehabilitation of Paul Heraud High School in Gap  
**BAT AB - 2nd BASEMENT FLOOR LAYOUT**  
SCALE 1/200



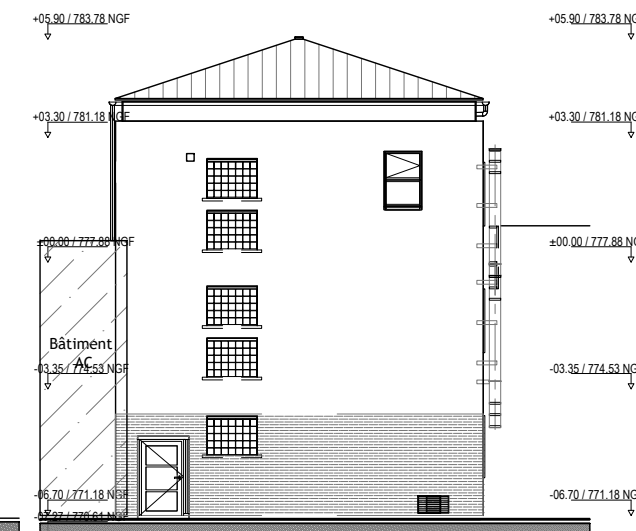
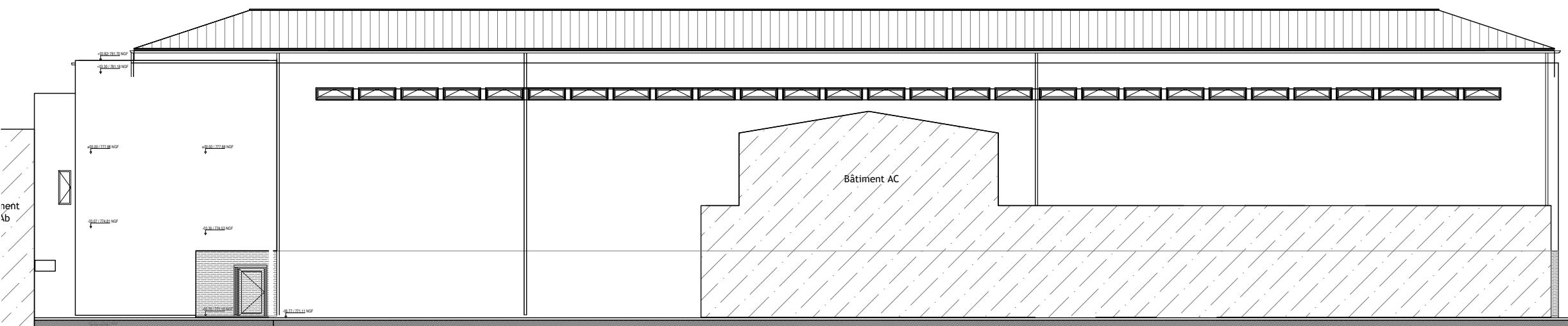
**PAUL HERAUD HIGH SCHOOL IN GAP**  
Energetic rehabilitation of Paul Heraud High School in Gap  
**BAT AB - SECTION**  
SCALE 1/100



SECTION EE'



EAST FACADE

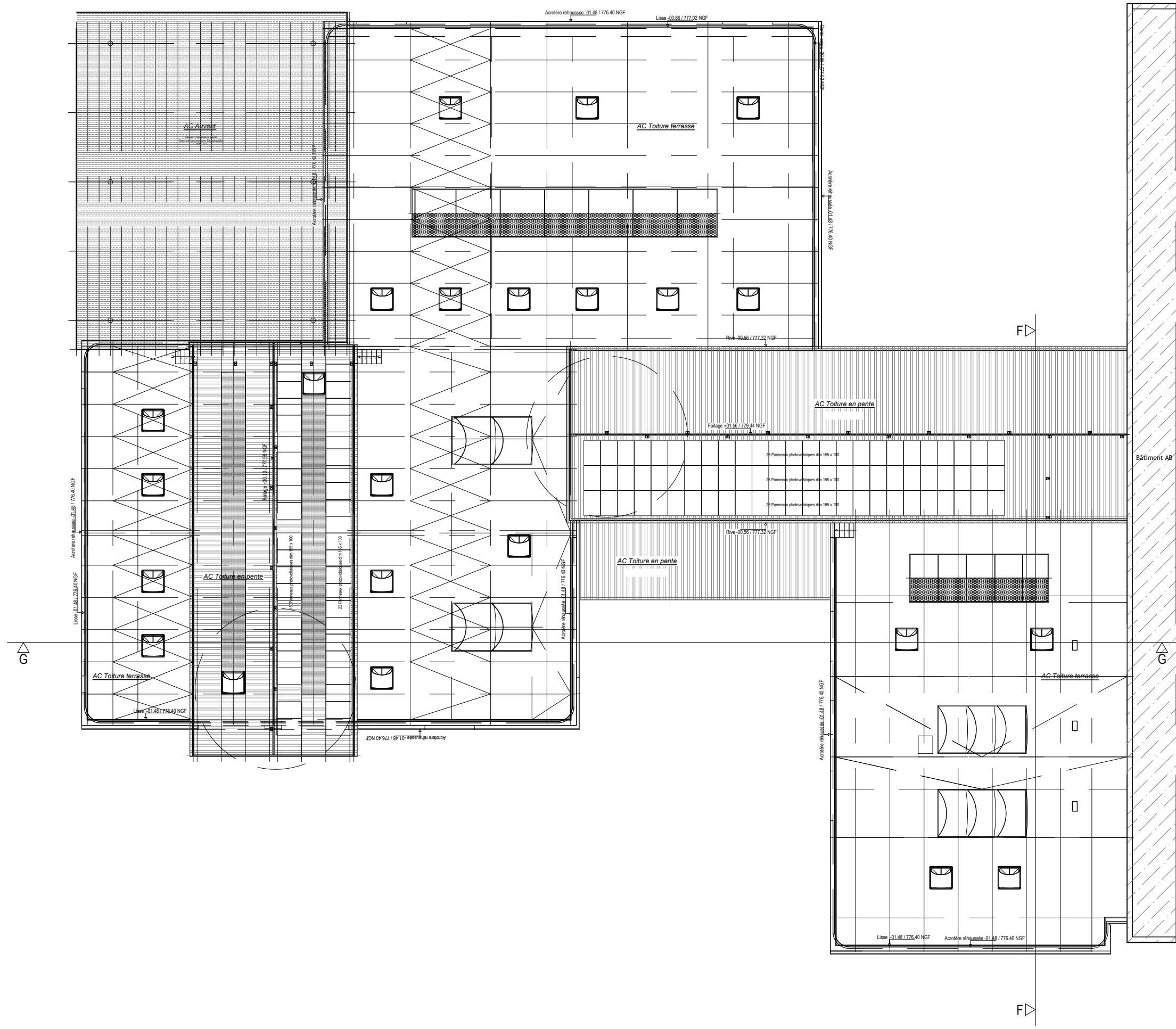


WEST FACADE

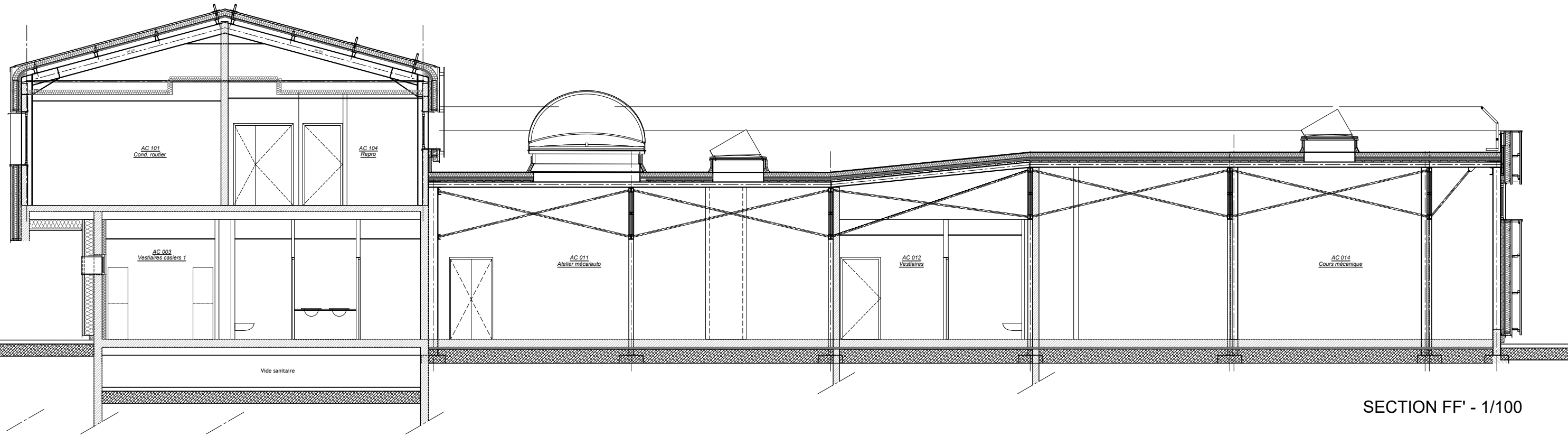




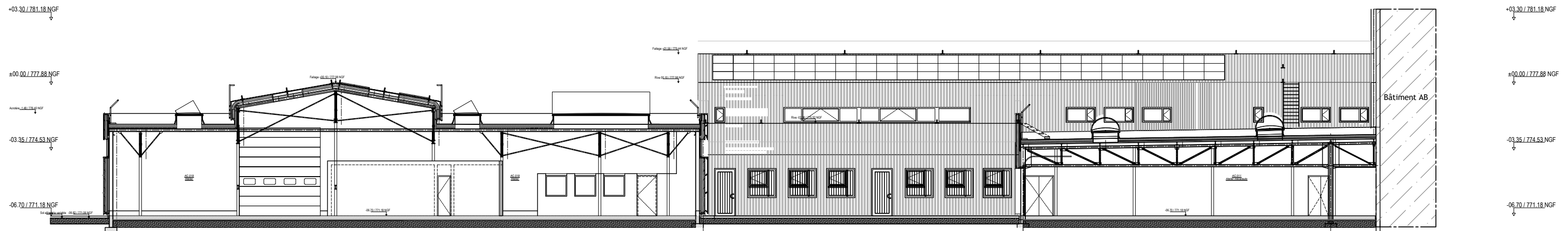
**PAUL HERAUD HIGH SCHOOL IN GAP**  
 Energetic rehabilitation of Paul Heraud High School in Gap  
**BAT AC - 1st FLOOR LAYOUT**  
 SCALE 1/250



PAUL HERAUD HIGH SCHOOL IN GAP  
Energetic rehabilitation of Paul Heraud High School in Gap  
**BAT AC - SECTIONS FF' & GG'**  
SCALE 1/100 ET 1/200

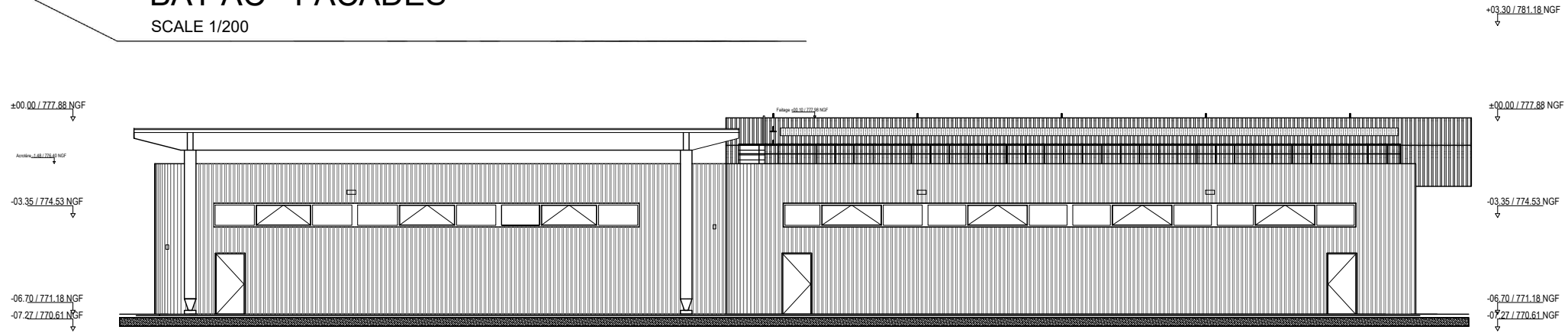


SECTION FF' - 1/100

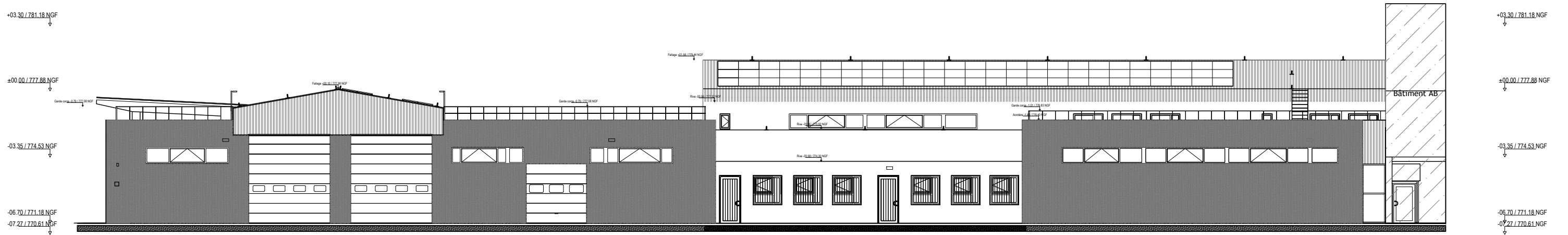


SECTION GG' - 1/100

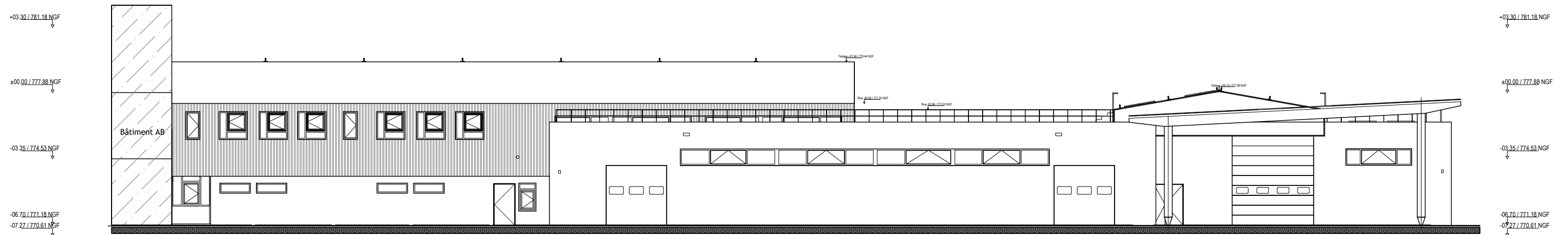
**PAUL HERAUD HIGH SCHOOL IN GAP**  
Energetic rehabilitation of Paul Heraud High School in Gap  
**BAT AC - FACADES**  
SCALE 1/200



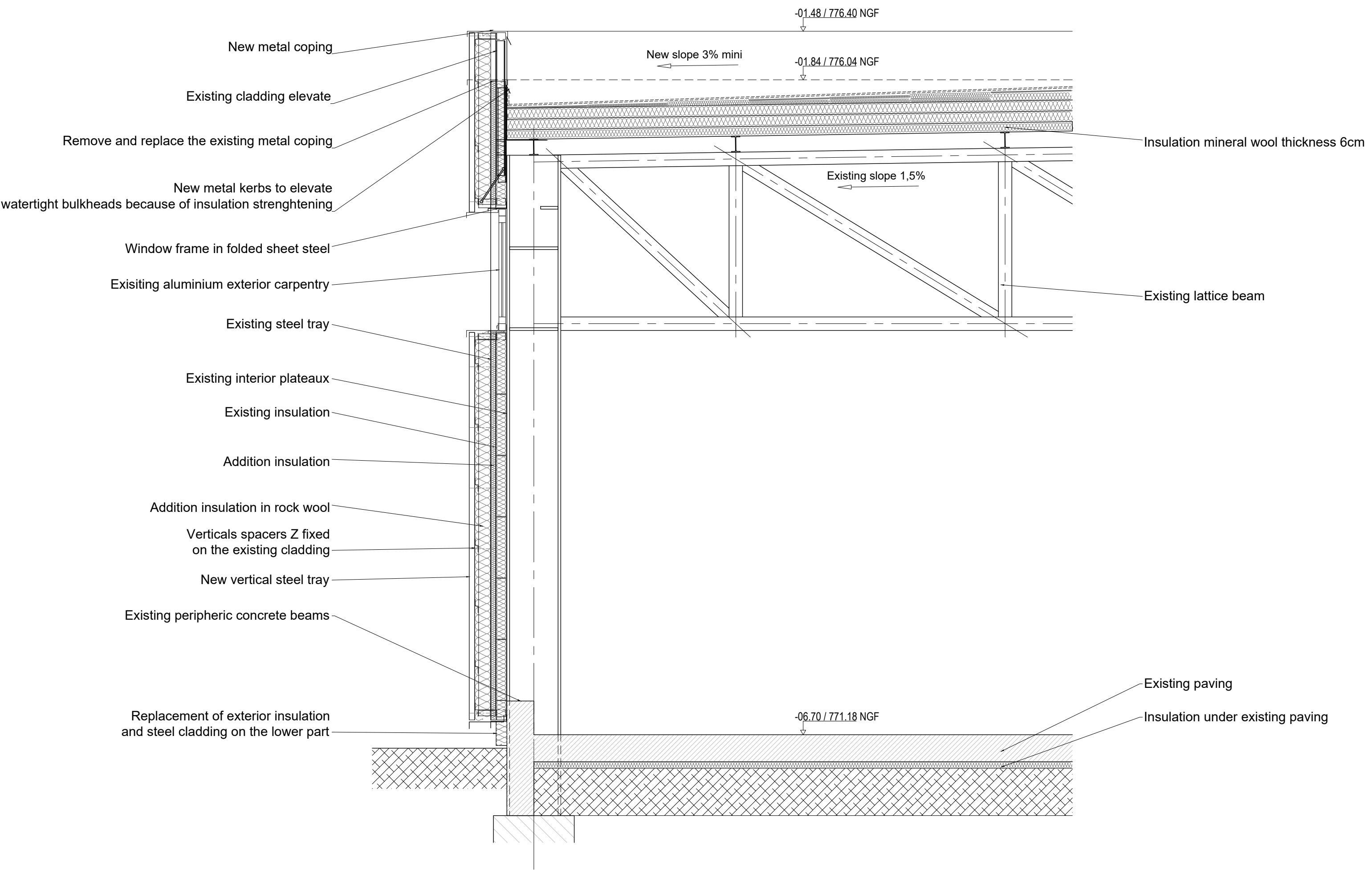
NORTHWEST FACADE



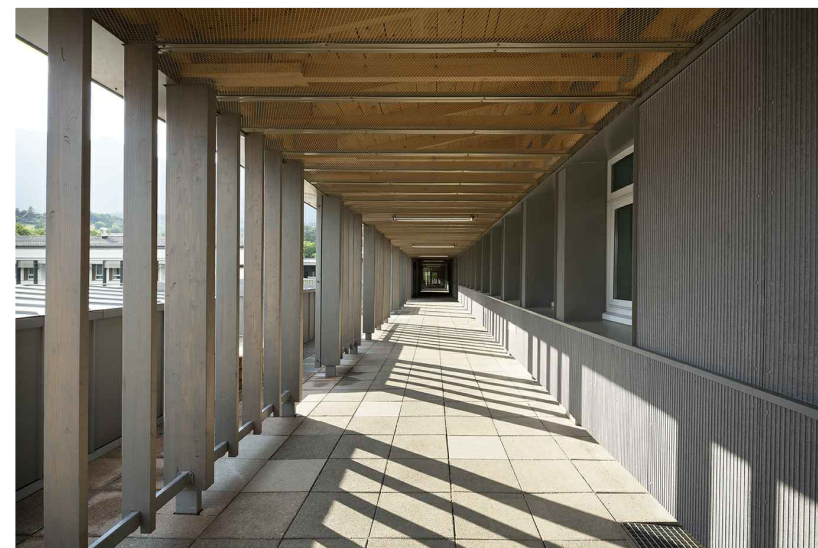
SOUTHWEST FACADE



NORTHEAST FACADE



**PAUL HERAUD HIGH SCHOOL IN GAP**  
Energetic rehabilitation of Paul Heraud High School in Gap  
**PHOTOGRAPHY**



**PAUL HERAUD HIGH SCHOOL IN GAP**  
Energetic rehabilitation of Paul Heraud High School in Gap  
**PHOTOGRAPHY**

