



1



2



3



4



5



6



7

THE ARCHITECTURE

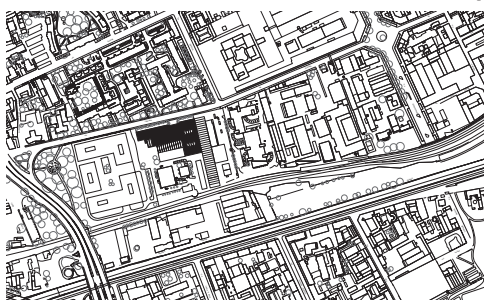
The project redevelops the disused industrial space, without changing its structure or main features, but rather making these archetypal elements - the shed roof, the wide spaces, the regular concrete grid - as the design pivotal points.

The urban facade is the key point of the project: large full-height windows alternated with slender bronze-plated mullions open the building to the city.

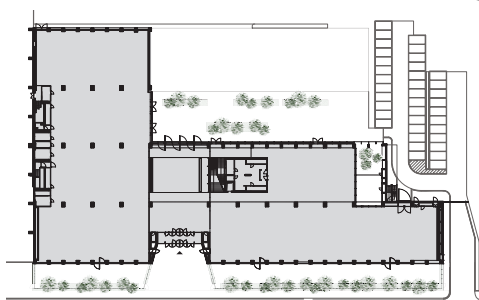
On the south facade the same principles are emphasised by a double rhythm of deep vertical mullions hosting the shading systems.

The external skin, characterised by significant dimensions and high solar factor, is the result of technological research to achieve lightness and monumentality.

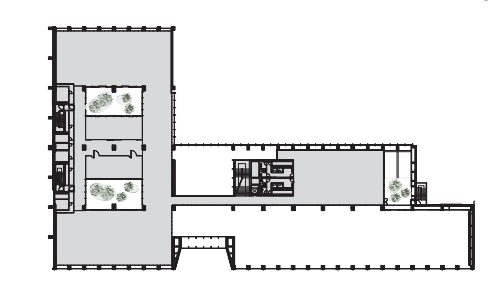
- 1 The existing site in 1970s, exterior from via Tortona. © Gabriele Basilico
- 2 The existing site, exterior from via Tortona. © Mario Frusca
- 3 Construction site March 2019 © Mario Frusca
- 4 The building from via Tortona. © Lorenzo Zandri
- 5 The main facade. © Nicola Colella - Park Associati
- 6 Courtyard. © Lorenzo Zandri
- 7 The entrance on via Tortona. © Nicola Colella - Park Associati



The context 0 10 50 100m



Ground floor plan



First floor plan 0 5 10 20m



Elevation - Via Tortona

0 1 5 10m