

The Rosewood Country Club

A dream that comes true...



Introduction

Imagine 170 properties in a magic surrounding...

It was a bouquet of dreams, impulses, goals and thoughts that motivated us to develop the Rosewood Country Club.

This procedure started above all as a listening process...

...As we shared people's dreams, we listened and hopefully we answered these dreams.

But what where these dreams and how we helped them come true?

As a starting point our aim with Rosewood Country Club is:

“To create a civilized, a pleasurable neighborhood, with people living side by side with nature and enjoying the timeless qualities of a community”

Therefore we have chosen this place in South Kefalonia, where we could build within nature without destroying it. We were in fact looking for an island of space in one of the most beautiful islands of Greece.

The search for a heaven that could offer the timeless qualities and led to the formation of architectural philosophies.

Our ambition is our residents and their children to love this land and make it bloom...



...We were looking for an island of space in one of the most beautiful islands of Greece....



Zefalonia



- *Out of its 42.000 inhabitants we were amazed to find out that 4.000 (almost 10 per cent) are British citizens. This gave us an additional reason to address the British foreign property market.*
- *Therefore the basic idea popped out by itself: **to develop a clustered community in a civilized environment for Northern European (mostly British) people who are looking for a holiday house in the Mediterranean sun, in one of a most beautiful islands (not yet unspoiled) of this unique Ionian Sea.***
- *So we chose the place and we planed the Rosewood Country Club that would be inhabitable in both winter and summer.*



The aim

- *The aim was to create a lost community, a neighborhood and to install it in a sense of belonging and identification. And at the centre would be the heart of Rosewood Country Club. In this heart would be shops, tennis courts, swimming pool, a small lake, restaurant and café, a gymnasium and a lot of facilities to complete the image...*
- *The center will be no more than three minutes walk from any point in the club.*
- *It will create a space where life can grow and blossom. It will be a coming together of both large and small dwellings, small streets and green places. This will be a return to the traditional human scale: Everything within walking distance, design made for people not for cars, yet for children to feel comfortable playing outside with their toys and bicycles...*



...for children to feel comfortable playing outside with their toys and bicycles...

The design concept

- *The centre and its surroundings will play a major role in determining life at Rosewood Country Club.*
- *For this reason the houses were designed in a specific way: houses with private and/or common swimming pool and exterior walls with balconies.*
- *The streets, the trees, the greenery it is all so that the children can play and the grownups can sit outside and chat.*



The design

...And our dreams united to form a new Entity:

The Rosewood Country Club

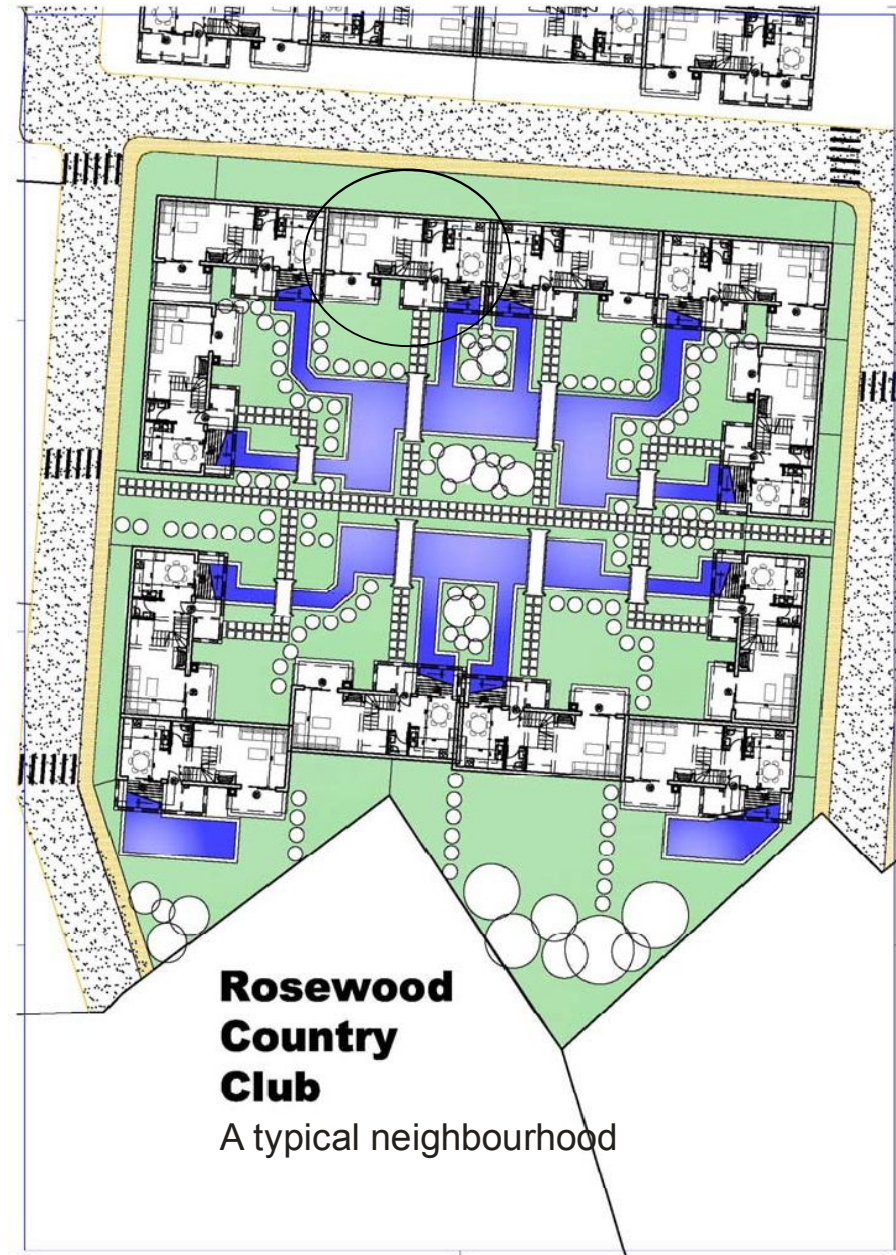


1	ADMINISTRATION AND SECURITY
2	SPORTS CENTER
2A	TENNIS COURT
2B	5X5 SOCCER FIELD
2C	VOLLEY BALL-BASKET BALL COURT
2D	BEACH VOLLEY COURT.
2E	OUTDOOR GYMNASIUM
3	AQUA CENTER.
3A	LAGOON
3B	CHILDREN'S POOL
3C	WATER CHUTE
4	EQUESTRIAN (HORSE RIDING) CENTER
4A	STALLS
4B	TRAINING RING AND OUTDOOR ARENA
4C	RIDING TRAILS
5	RETAIL ZONE
5A	MINI MARKET
5B	MEMORABILIA STORE.
5C	OUTDOOR SHOPS
6	HEALTH AND BEAUTY CENTER
6A	INDOOR GYM
6B	MASSAGE PARLOR
6C	SPA
6D	SALON DE COIFFURE
7	FOOD COURT BBQ-RESTAURANT-BAR-CAFE
8	PRIVATE GARDENS.
9	OPEN THEATRE

The design

The neighbourhood

- *This is how a typical neighbourhood will look like...*
- *Semi-detached maisonettes will have their entrance over a private pool connected to the common pool complex.*
- *Wooden footbridges will connect the cobble-stone pavements in an environment full of trees, grass and rock-gardens.*



The design

The house

(individual semi-detached maisonette with private pool)

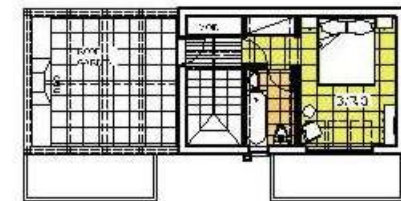
The drawings show a typical Rosewood Club maisonette (the one marked in a circle in the previous page where the neighbourhood was described).

The main entrance through a wooden deck overlooking the private pool, leads to the ground floor where the lounge/sitting room is along with an open kitchen and the central staircase.

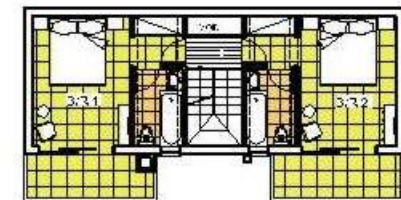
At the basement is the garage, while the most amazing feature of the house is the play-room with a firm glass watching window looking into the private pool of the house!

At the two upper floors there are three bedrooms, each one with its own bathroom. Every bedroom has a separate balcony, with pool view.

A wooden pergola and an optional BBQ with bricks will give a special colour and personality at the roof garden.



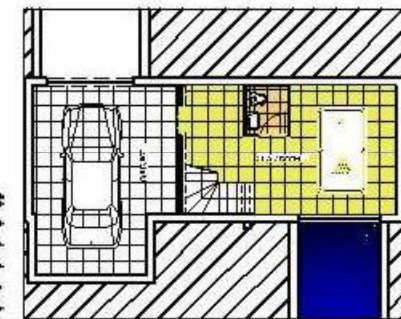
TAKEN OFF NORTH-TAKE OF THE HOUSE



TAKEN OFF NORTH-TAKE OF THE HOUSE



TAKEN OFF NORTH-TAKE OF THE HOUSE



TAKEN OFF NORTH-TAKE OF THE HOUSE



TAKEN OFF NORTH-TAKE OF THE HOUSE

Club's Facilities



ADMINISTRATION AND SECURITY



SPORTS CENTER



AQUA CENTER.



EQUESTRIAN CENTER



RETAIL ZONE



HEALTH AND BEAUTY CENTER



FOOD COURT BBQ-RESTAURANT-BAR-CAFE



PRIVATE GARDENS.



OPEN THEATRE

Design principles

- *We followed the tradition set by the old Kefalonian houses, fine examples of the traditional Ionian architecture, combined with modern aspects in order to give a unique personality. Just as in the traditional Kefalonian villages, the houses of Rosewood Country Club are alike in that they form a family, yet each member of this family is an individual with its own features and personality. Although the houses may look alike, they are in fact very different.*
- *Sensitively designed architecture is not limiting but should be seen as all embracing and wide ranging. In Rosewood Country Club, the open spaces were designed with as much care as the buildings*
- *Naturally, the houses of Rosewood Country Club were not piled one on top of the other like concrete blocks. Our houses are all individual members of one noble and traditional family. The windows of our houses are open to the beauties of nature*



Summary

- *A modern interpretation of traditional Ionian Architecture, clustered around a lake, and featuring an attractive mix of villas, townhouses and apartments...*
- *Offering the unique life style of Rosewood Country Club....*
- *In one of the few remaining unspoiled paradises in the Mediterranean Sea:
Kefalonia
the Ionian Pearl....*

