

**ATELIER DU PONT**

# *European Space Agency*



Atelier du Pont signs the headquarters of ESA in Paris

**MEDIA CONTACTS :**

**14 Septembre**

Marie Bissière-Blanchet

07 85 75 95 39

mariebissiereblanchet@14septembre.fr

**Atelier du Pont**

Marie Blin

01 53 33 24 10

mab@atelierdupont.fr



esa



# The new European Space Agency

After a titanic construction project, the European Space Agency (ESA) headquarters located in the heart of Paris is now ready to welcome the Agency's staff and representatives of its 22 Member States. This new center for the European space cooperation is an ultra-modern building, flexible and open to the city.

In collaboration with ESA and the developer Sogelym Dixence, the architectural firm Atelier du Pont has designed a place dedicated to the space adventure, blending imagination and knowledge; an architecture inspired by the mystery of matter and the landscapes of our galaxy.

The new headquarters, which offers an innovative working environment for staff and partners, reflects ESA's evolution and incorporates technologies from the space sector.







before



after







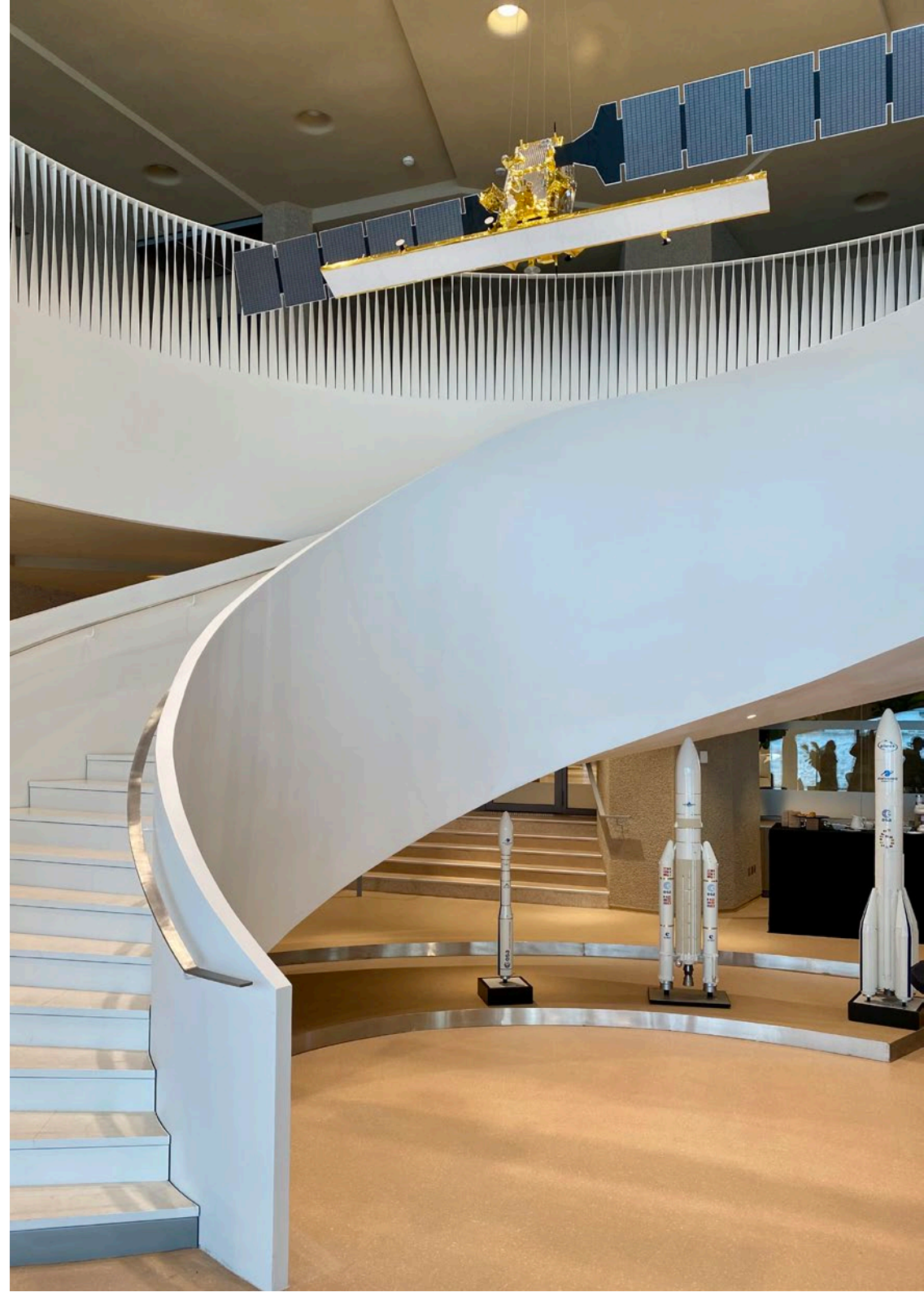
Atelier du Pont





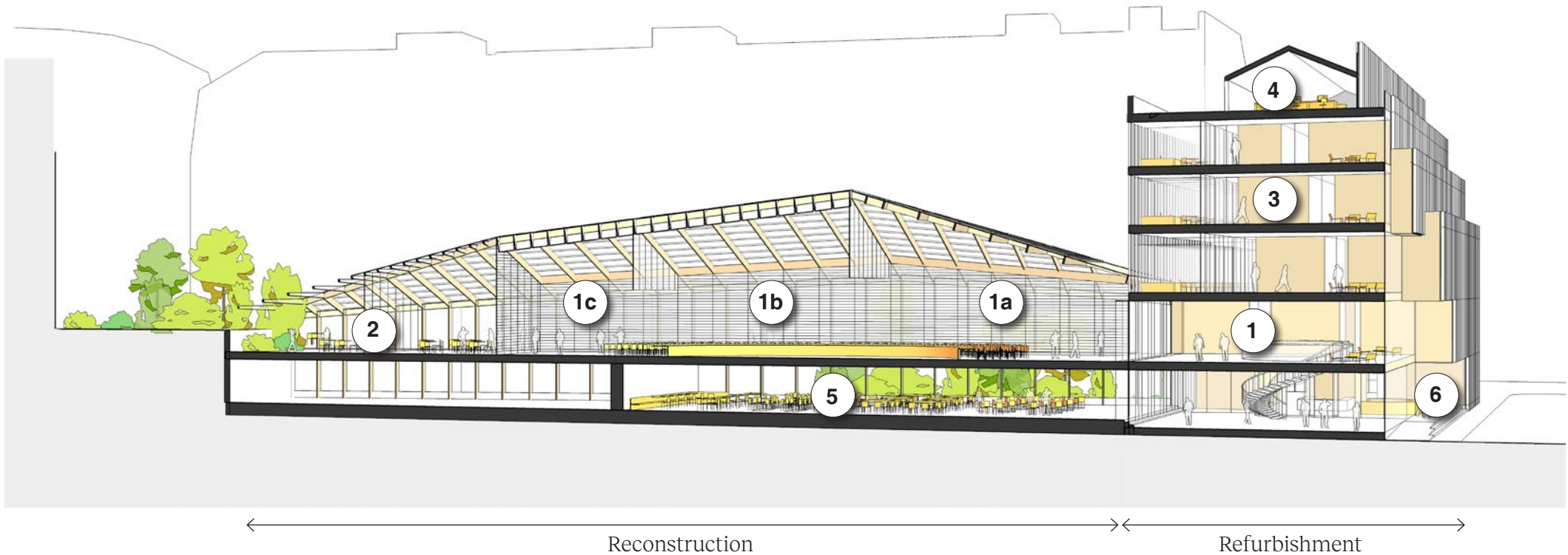
*The reception area and its monumental staircase*







- 1 Conference center: 3 boardrooms and 38 modular meeting rooms
- 2 VIP restaurant & terrace
- 3 Working spaces from R+2 to R+4
- 4 Rooftop cafeteria and terrace on the 5th floor, collaborative work spaces, Knowledge Center
- 5 Restaurant
- 6 Astrolabe, shop open to the public



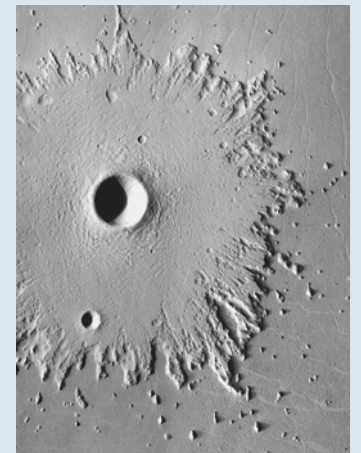








*“Evoking high technology, adventure and the mystery of matter, ESA headquarters is inspired by the fabulous landscapes of space, moon craters, molten rocky meteorites and stellar nebula.”*





# A striking refurbishment in the heart of Paris

ESA headquarters have been located in the former Thomson factory in rue Mario Nikis since 1976. In 2017, ESA's 22 member states validated the proposal to renovate the existing building for two main reasons: an extension to welcome up to 30 delegations and the removal of asbestos from the current building.

The preliminary work began in 2018, when staff moved from rue Mario Nikis to temporary premises nearby for the duration of the works.

This major refurbishment has reconfigured the entire space and optimized the building's environmental performance.





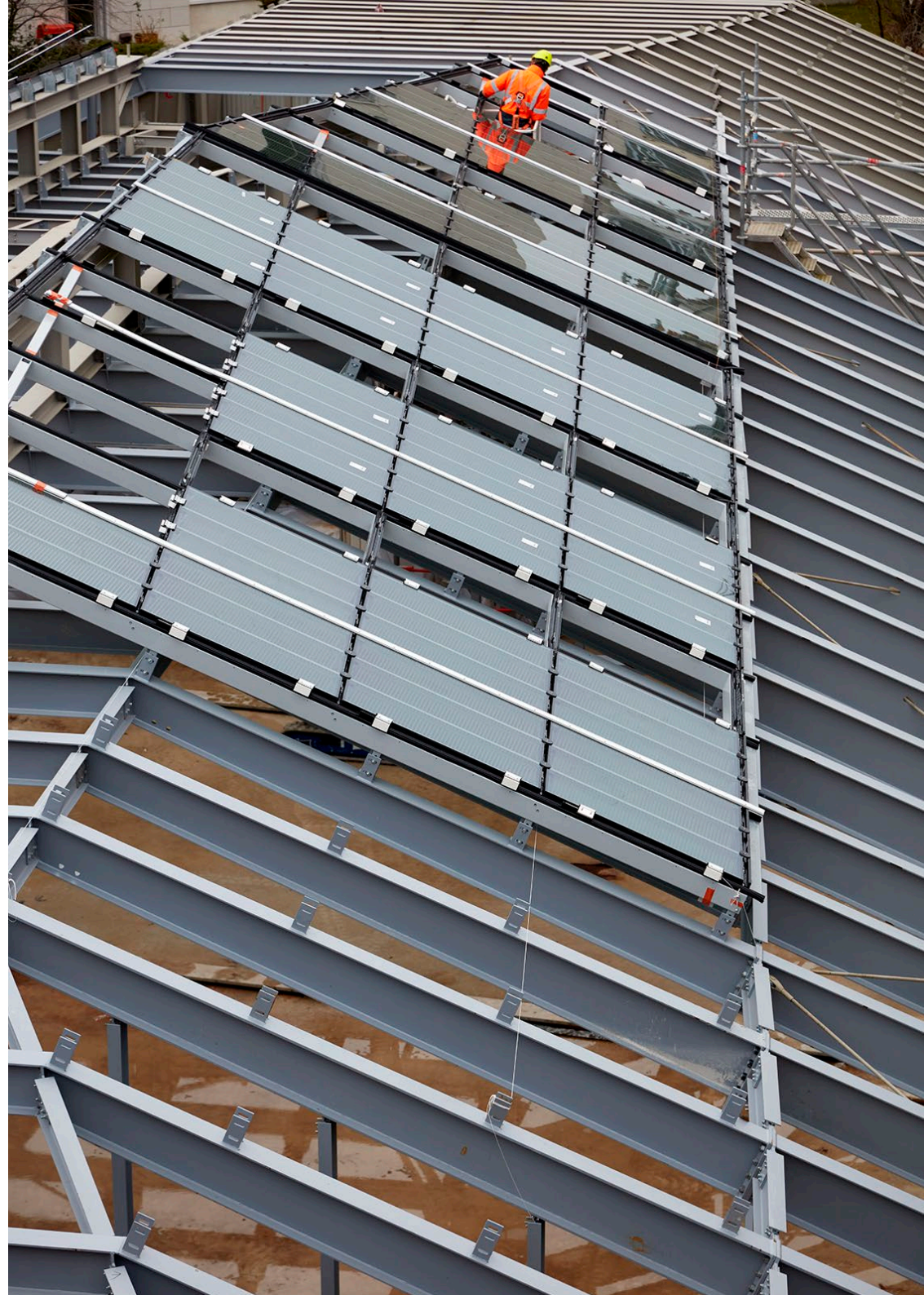


Inspired by the logo of ESA, the monumental staircase, with its complex shape and no intermediate supports, is made of steel. The structure, made of steel sections and lacquered steel cladding, is inserted into a circular concrete hopper. The balustrades are twisted around the hopper.



# The new conference center

In the heart of the block, the new conference center sits on top of two levels of an existing parking. The structure is composed of 15cm-wide welded portal frames with a 1.30m grid, providing a spectacular perspective from the entrance. The glazed roof is made up of glass panels incorporating aluminum slats that let the light in while ensuring privacy.









# TECHNICAL SPECIFICATIONS

Adress : *rue Mario Nikis, Paris 15th*

Client : *ESA - European Space Agency*

Contracting authority support : *Colliers*

Developer : *Sogelym Dixence*

Architect and interior designer of commons spaces :  
*Atelier du Pont (Anne-Cécile Comar & Philippe Croisier)*

Contract management : *Corelo*

Engineering team : *AE75 (construction economics), Ingerop (fluides), VP & Green (structure and façades), Le Sommer (sustainable engineering), Peutz (acoustics), Cosil Peutz (light designer), Convergence (kitchen), Omega Alliance (asbestos removal and demolition), Socotec (control office and SPS)*

General contractors : *Bouygues Construction renovation private*

Office layout and furniture : *Majorelle*

Surface : *11 592 m<sup>2</sup>*

Date : *November 2022*

Sustainable specifications : *HQE Bâtiment Durable Excellent level, Breeam Very Good level, Well Core and Shell Gold level*

Photographers : *Frédéric Delangle and ESA - European Space Agency*

# About Atelier du Pont

Founded in 1997, Atelier du Pont is an architecture and interior design firm that today employs 45 people from all walks of life, led by two partners: Anne-Cécile Comar and Philippe Croisier.

The agency works in a wide range of fields: facilities, housing, offices, private homes, hotels, boutiques, restaurants... and questions new ways of living, working and relaxing, to create places that are fair, creative and inspiring, in France and abroad.

His approach is global. Whether its projects take the form of a small 15 m<sup>2</sup> boutique or a 10,000 m<sup>2</sup> building, Atelier du Pont tackles every aspect: architecture, urban planning, interior design, furniture, art direction, space planning... Each project is a new adventure.

The agency has won numerous French and international awards: *French Design by VIA, Prix Régional de la Construction Bois, ArchiDesignClub Awards, Trophée Eiffel, S.Arch Awards, The Plan Award, Prix AMO, Geste d'Or...*



# About ESA

The European Space Agency (ESA) is Europe's gateway to space.

ESA is an intergovernmental organization founded in 1975 and headquartered in Paris. Its mission is to develop Europe's space capabilities, ensuring that investment in the space sector benefits citizens in Europe and around the world.

ESA has twenty-two member states: Austria, Belgium, the Czech Republic, Denmark, Estonia, Finland, France, Germany, Greece, Hungary, Ireland, Italy, Luxembourg, the Netherlands, Norway, Poland, Portugal, Romania, Spain, Sweden, Switzerland and the United Kingdom. Other countries have associate member status.

By coordinating the financial and intellectual resources of its members, ESA can undertake programs and activities that go far beyond what any individual country could achieve on its own. In particular, it is cooperating with the EU on the implementation of the Galileo and Copernicus programs, as well as with Eumetsat on the development of meteorological missions.

To find out more:  
[www.esa.int](http://www.esa.int) / [www.esa.fr](http://www.esa.fr)