

The Oatmeal Factory

宁武燕麦工厂

Press kit



Johan Sarvan

DPLG Architect, graduated from National School of Architecture of the city and territories of Marne-la-Vallée in 2006

Founder of JSPA Design in Beijing in 2009

建筑师 | 2006 年毕业于法国马恩拉瓦莱国立高等建筑和城市规划学院

2009 年于北京创立卓汉苏文建筑事务所

Florent Buis

DE Architect, graduated from National Architecture Superior School of Marseille-Luminy in 2010

Partner of JSPA Design since 2013

建筑师 | 2010 年毕业于法国卢米尼 - 马赛国立高等建筑设计学院

2013 年起成为卓汉苏文建筑事务所的合伙人

卓汉（北京）建筑设计咨询有限公司
JSPA Design

公司电话 010-85270335
公司邮箱 contact@jspa.fr
公司网站 www.jspa.fr



Ningwu oatmeal factory

宁武燕麦工厂

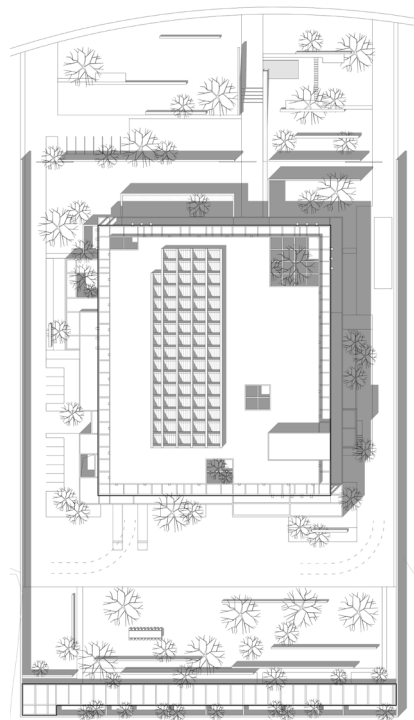
Construction of an oatmeal factory including production spaces, public spaces for the visitor and a staff dormitory.

建造燕麦片厂，包括生产空间、供访客使用的公共空间以及一个员工宿舍。

2017 / Architecture 建筑设计
Interior Design 室内设计
Landscape Design 景观设计

Type : Factory
Location : Ningwu
Project area : 8600m²
Phase : Completed

类型：工厂
位置：宁武
面积：8600m²
项目进程：已建成







Original site
场地原状

Located in Ningwu, Shanxi province, the project consisted in the creation of an Oatmeal factory, transforming raw oat into flour products. The production process, mostly automated, needed two different production lines with high volume machinery and spaces open to the public with shop, café and office spaces.

The surroundings of the project offered very low quality with newly constructed industrial buildings, dry landscape and coal mines and it seemed interesting to develop the factory as an introverted building that would recreate its own natural environment. Besides satisfying all functional requirements, we thought the project as a building that stimulates human senses, that would propose a surprising experience to the visitor.

The idea was to use a system of brick walls to enclose and hide the various technical spaces of the factory into an opaque ground floor and to set-up a simple concrete volume on the top of it, to host all the public spaces of the program. Patios and large gardens will pierce the whole building, to provide natural light while creating impressive spatial dilatations within the factory. Central production spaces will also get natural light from concrete sheds, opening the roof to the north light.

The system of brick walls starts from the front of the factory, where a landscape area is voluntarily left open to the use of the local community with benches and water pools for kids to play. Brick walls grow slowly from benches shape to become the property fence of the factory and later, the façade of the whole building.

The shape taken by the brick walls will form and define the different entrances of the factory, each of them with a specific function: The raw materials delivery, the products loading, the staff and the visitor entry.

Separated into distinct paths, staff and visitor will never cross ways inside the factory and while the workers will enjoy a functional organization, the visitor, will go through a planned spatial experience. At one moment only, the production line is showcased to the visitor in an elevated corridor overlooking the workshop.

The dormitory for employees was set-up in the back of the factory and conceived as an invisible architecture. The brick fence wall was thickened to host the building and patios were created to bring light to the rooms while preserving their intimacy. The space between the factory and the dorm becomes a garden in which a concrete table and square seats were set-up.

The choice of construction materials carries a strong meaning: the use of the grey brick is a way to create a deep relationship with the site, using local construction methods. Exposed concrete, on the other hand, emphasizes the modernity of the building and allows structure and architecture to be bind together.

The landscape design is also fully integrated in the design process and rain water collected on the roof is redirected to water pools on different levels through cast-in-place concrete water exhausts, making the natural circulation of rainwater part of the experience of the space. The water flows until the entrance of the factory where a last water fall, combined with a twelve meters cantilever concrete logo wall invites the visitor to enter the architecture.

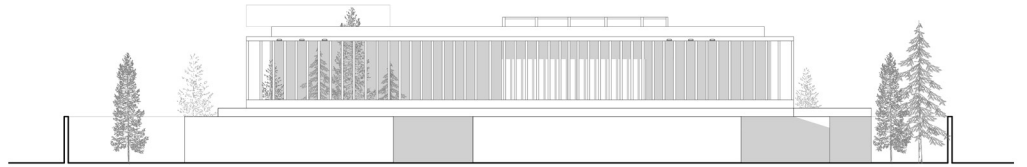
Across the design process, some regulatory issues were solved through design. Fire-fighting regulation required a water container on the roof that we decided to design as an independent element, a cantilevered stainless-steel box, like a sculpture on the roof.



View from the entrance
主入口视角





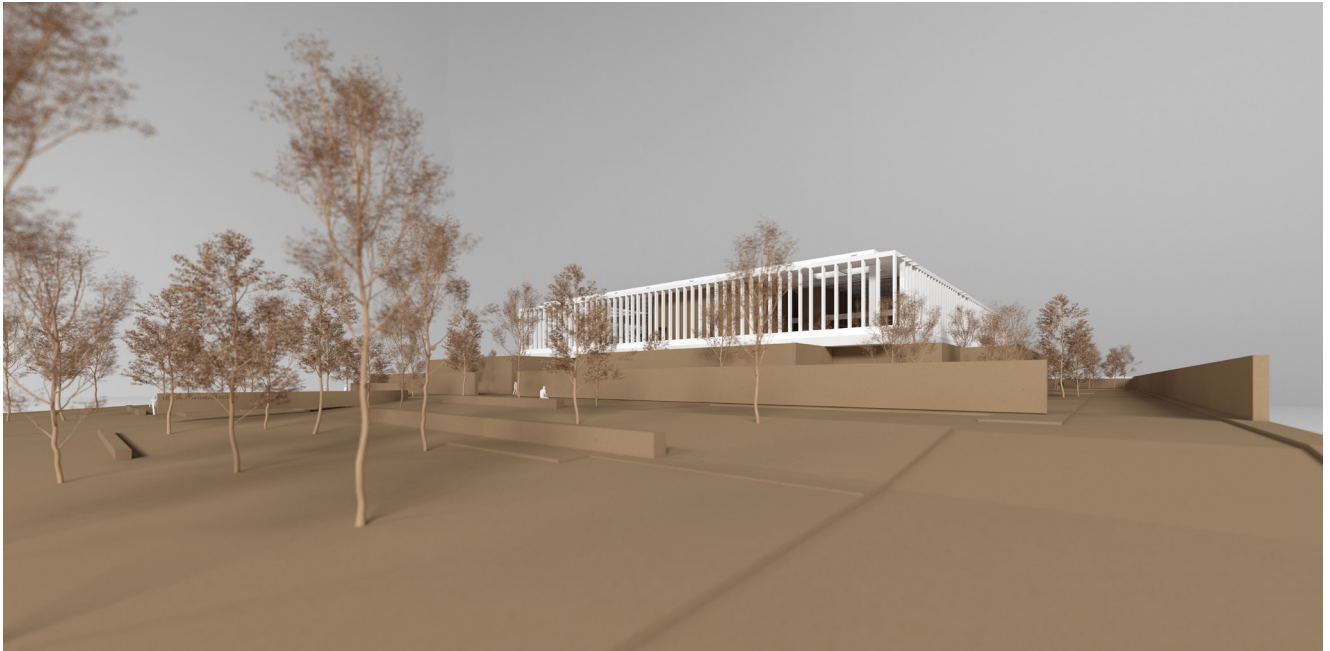


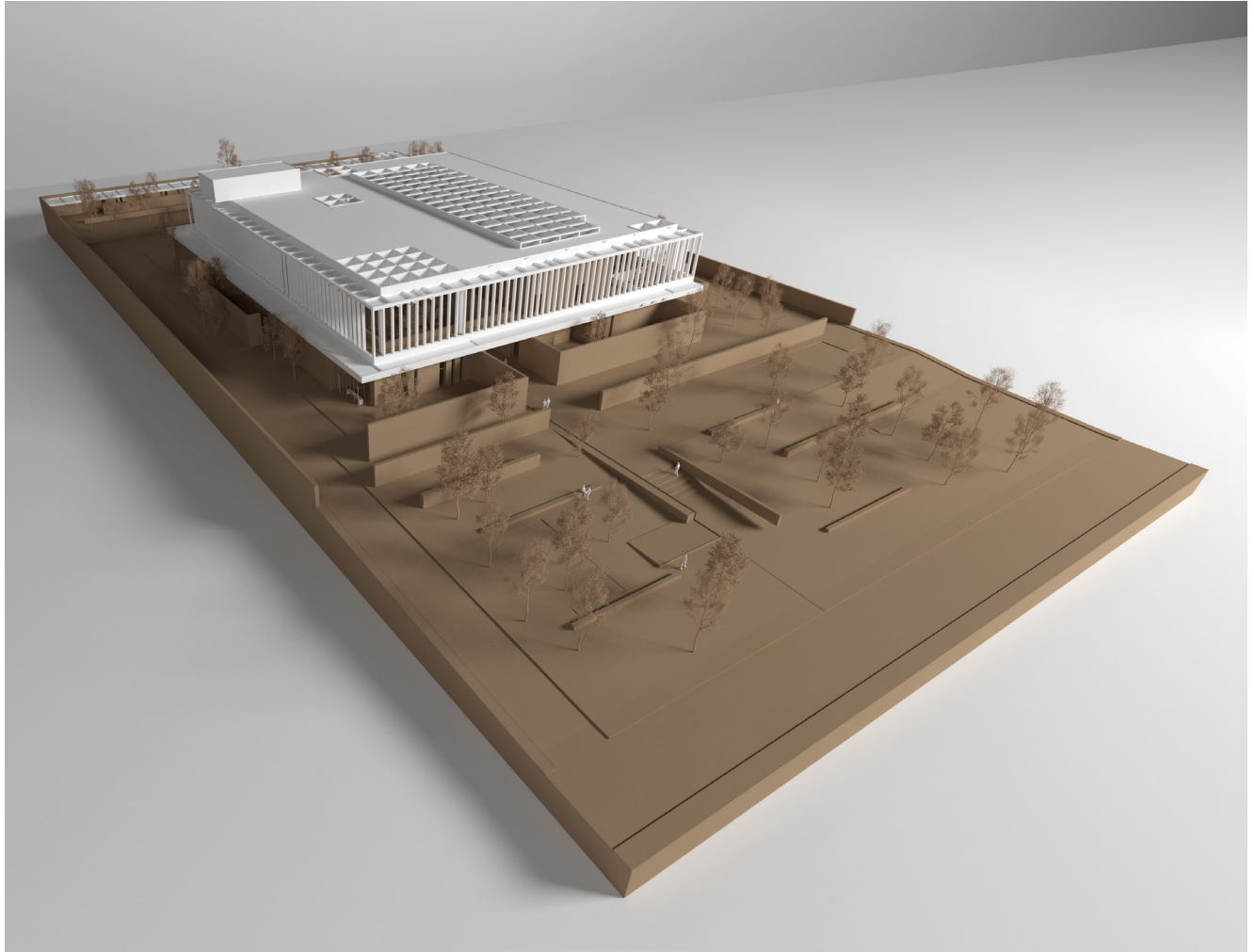








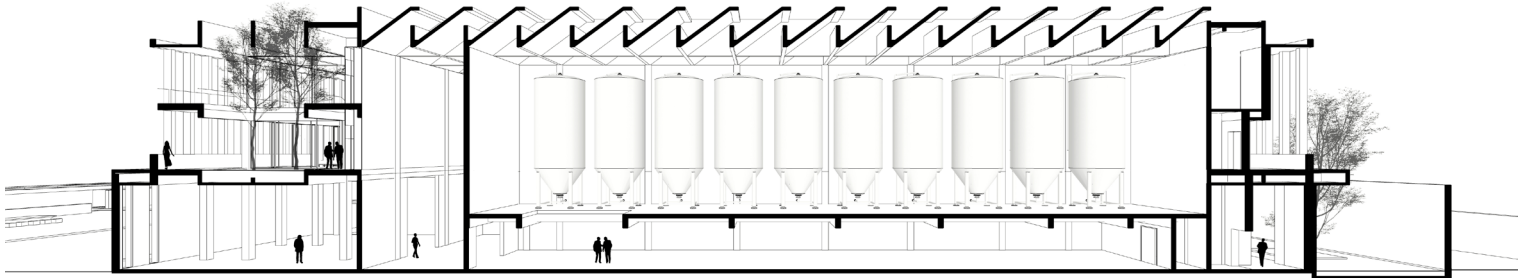
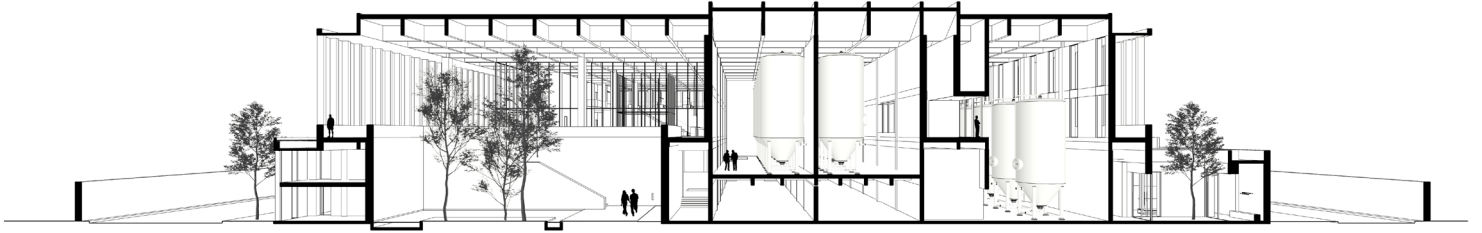


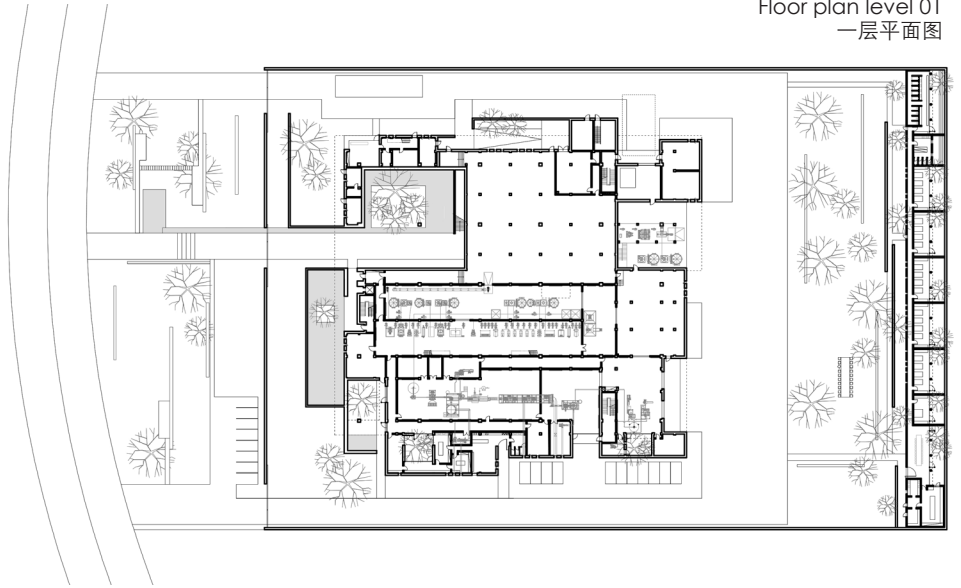












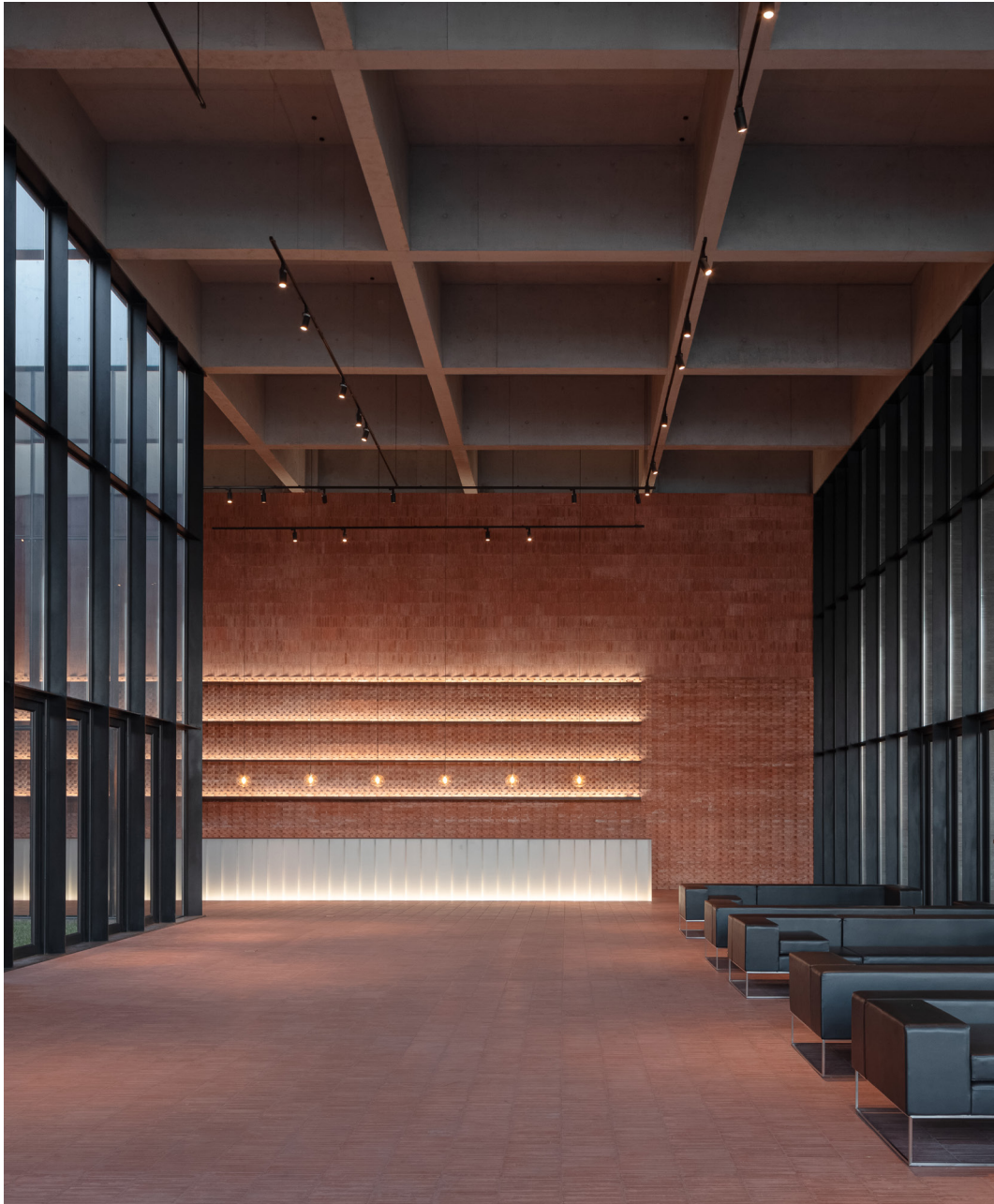
入口通向主要景观内院的视角
View of the entrance of the main patio



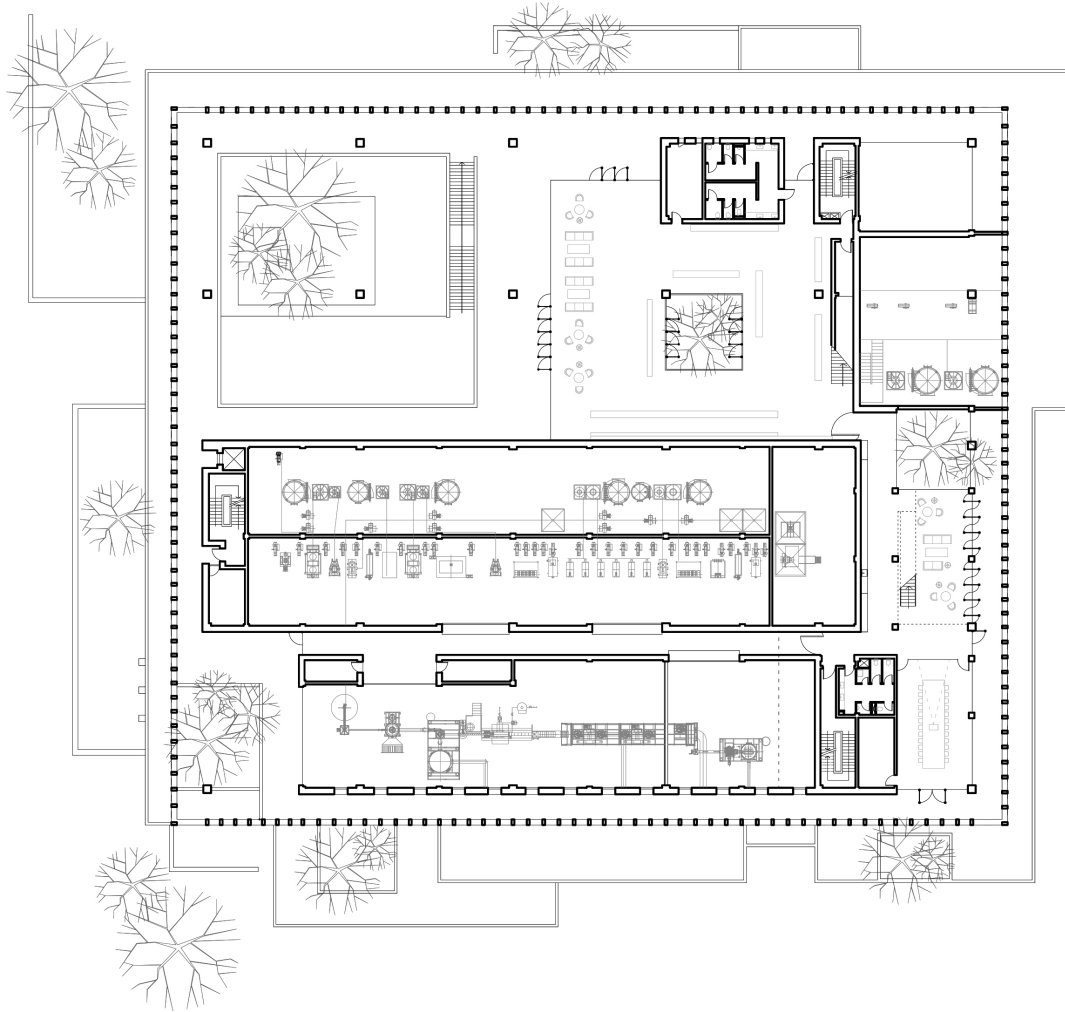


View of the main patio 主要内院景观视角
The stairs will lead to the reception desk 台阶通向接待台

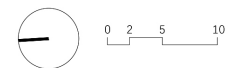




咖啡厅
Café / Shop



Floor plan level 02
二层平面图

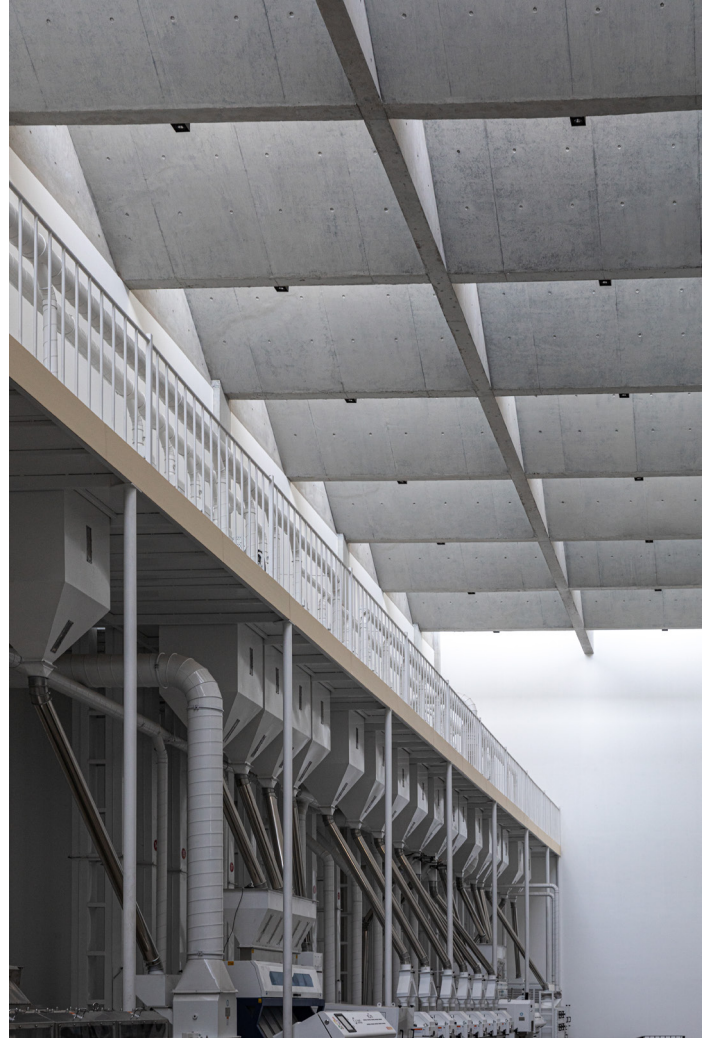






















员工宿舍
Employee Dormitory

1:2F Planter composition
二层花池做法

- 1 - Earth 400mm
覆土
- 2 - Geotextile mat 2mm
土工织物垫层
- 3 - Coarse gravel 200mm
粗砾石
- 4 - SBS Waterproofing 5+5mm
防根防水卷材
- 5 - Mortar Layer 130mm
3:7 灰土或碎石灌 M5 水泥砂浆
- 6 - Polystyrene foam board 20mm
聚苯乙烯泡沫板 (保温)
- 7 - Concrete slab 150mm
赶紧混凝土板

2:1F Flooring composition
一层地面做法

- 1 - Polished concrete 30mm
C15 混凝土垫层, 抛光面
(上下配 Ø3@50 钢丝网片)
- 2 - Mortar Layer + Floor heating 50mm
找平层 - 中间配散热管
- 3:7 灰土或碎石灌 M5 水泥砂浆
- 3 - Polyester film 0.2mm
真空镀铝聚酯膜
- 4 - Polystyrene foam board 20mm
聚苯乙烯泡沫板 (保温)
- 5 - Damp-proof membrane 1.5mm
聚氨酯涂料防潮层
- 6 - Mortar Layer 150mm
3:7 灰土或碎石灌 M5 水泥砂浆

3: Roof composition
屋面做法

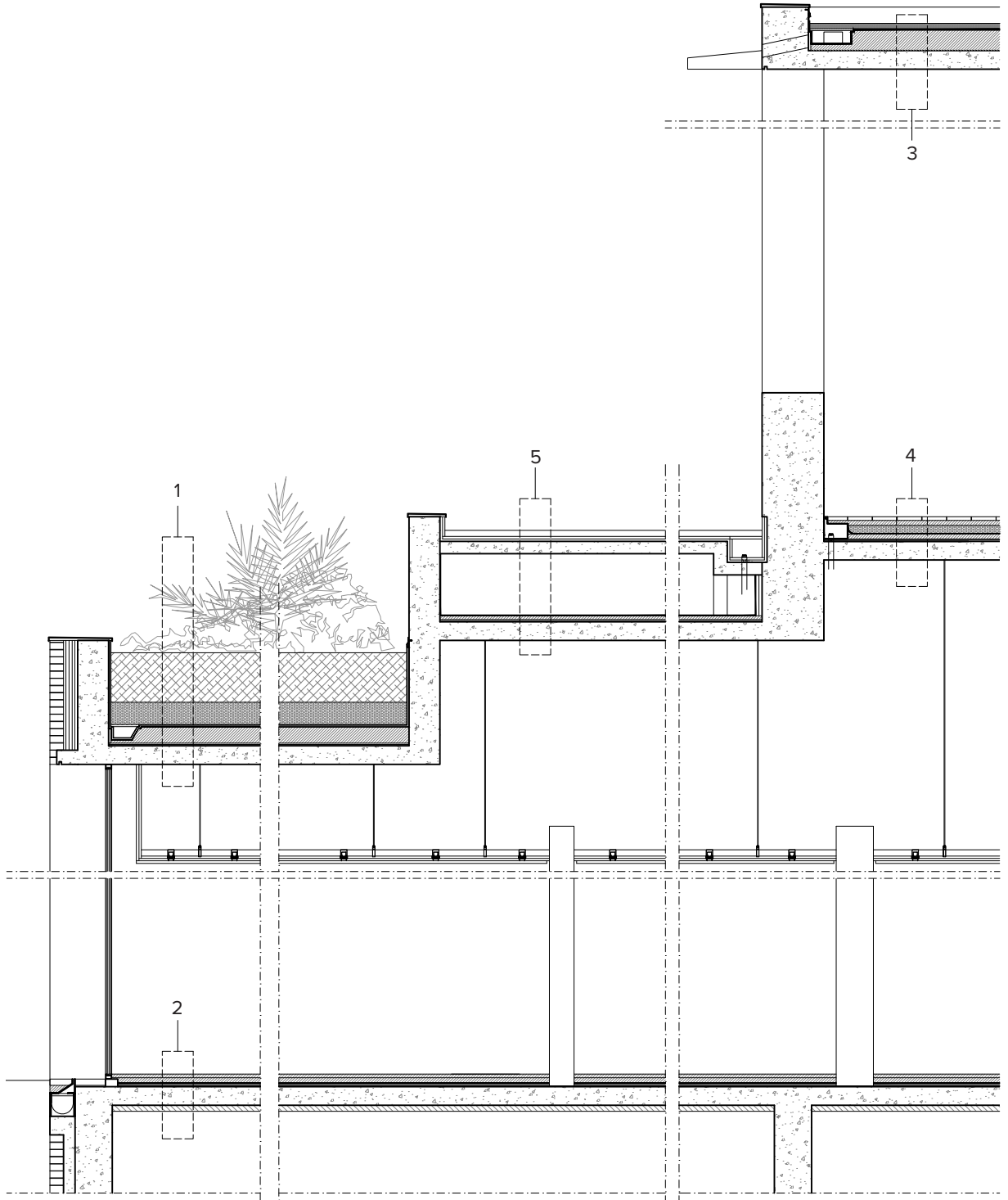
- 1 - Coarse gravel 50mm
乱石保护层
- 2 - Bitumen waterproofing 4+5mm
双层 SBS 改性沥青防水卷材
- 3 - Screed 1% slope 165mm
LC5 轻集料混凝土 1% 找坡层
- 4 - Concrete slab 150mm
赶紧混凝土板

4:2F Outdoor Flooring composition
二层户外地面做法

- 1 - Grey brick 30mm
灰色砖
- 2 - Mortar Layer 40mm
3:7 灰土或碎石灌 M5 水泥砂浆
- 3 - Gravel 60mm
碎石层
- 4 - SBS Waterproofing 4+5mm
双层 SBS 改性沥青防水卷材
- 5 - Mortar Layer 40mm
3:7 灰土或碎石灌 M5 水泥砂浆
- 6 - Polystyrene foam board 20mm
聚苯乙烯泡沫板 (保温)
- 7 - Concrete slab 150mm
钢筋混凝土板

5:Water pool composition
二层水池做法

- 1 - White pebbles 50mm
白色乱石
- 2 - Stone surface 20mm
石材
- 3 - Mortar layer 20mm
水泥砂浆
- 4 - Waterproofing
防水涂料
- 5 - Concrete slab 100mm
赶紧混凝土板



JSPA Design