

fig.1 This plan to build a residential house of two stories in parents' garden.

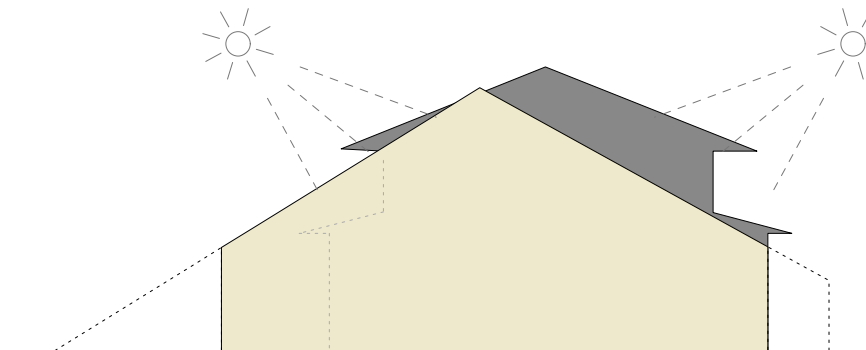


fig.2 In consideration of the sunlight to parents' house and the field of vision , right and left volumes are lowered.

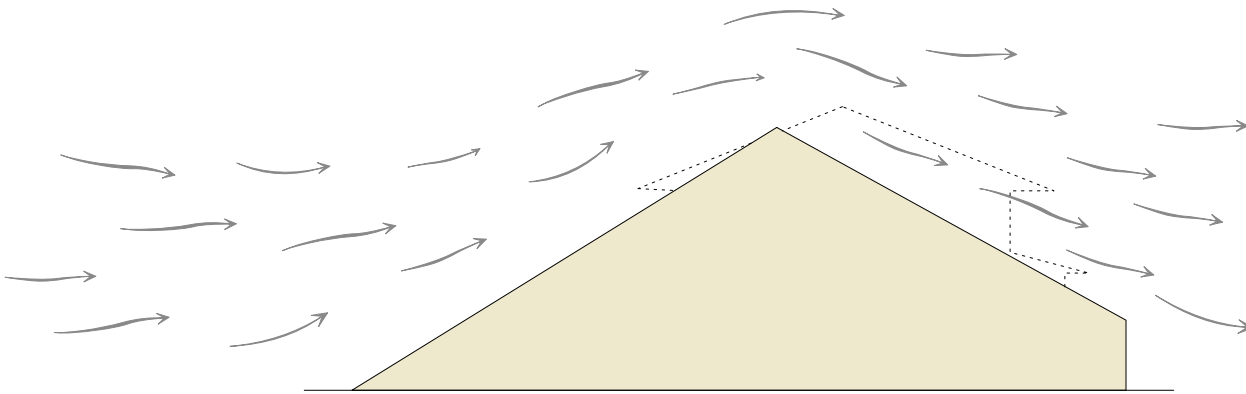


fig.3 In consideration of the influence of "IBUKI OROSHI(the strong west wind)" , extending its roof up to the close to the ground soil and fending off cold winds at the roof.

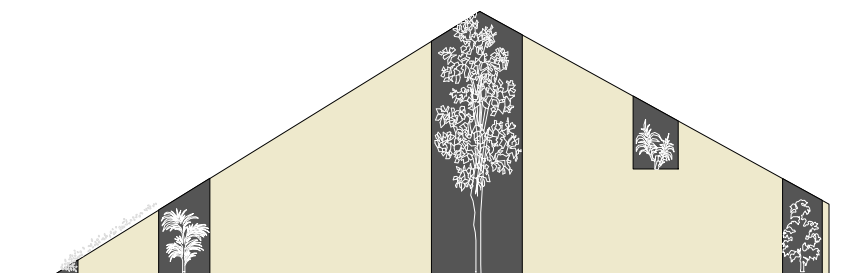


fig.4. Living rooms and patios are arranged in turn , which makes the air where the inside and outside exists together.