

CASA31_4 Room House re-interprets the role of memory, tradition and social and cultural value in a rich spatial experience that is simultaneously familiar yet unfamiliar. Our architecture preserves and reinterprets the past, history is layered but never erased, fragments of the past continually remind us that we are only another layer in the rich and unfolding history of this place.

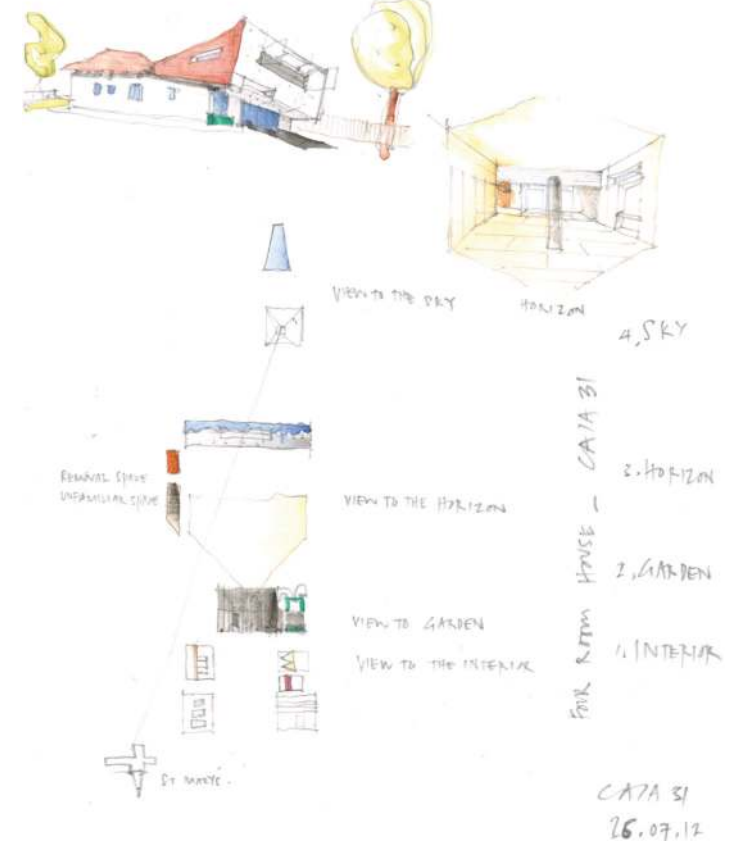
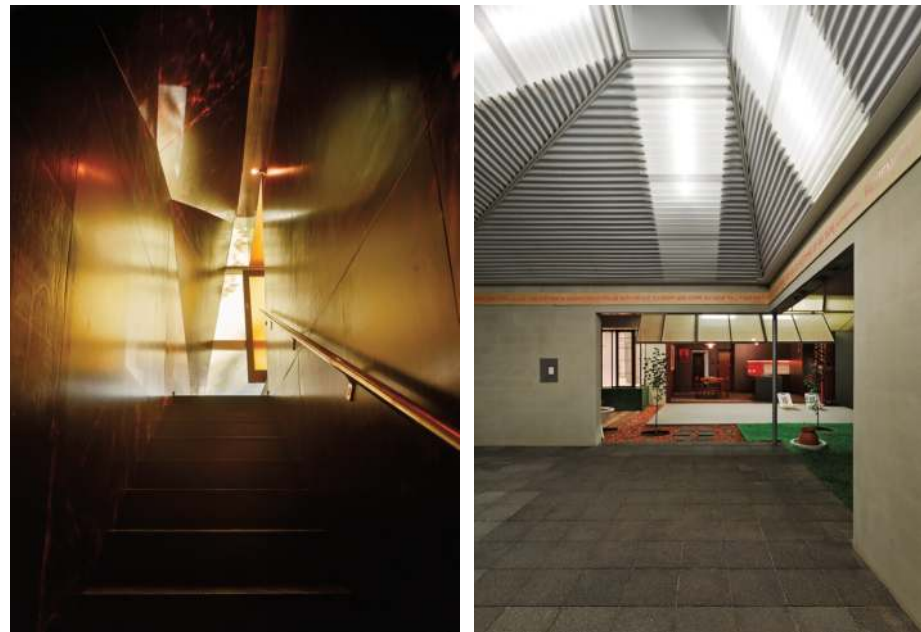
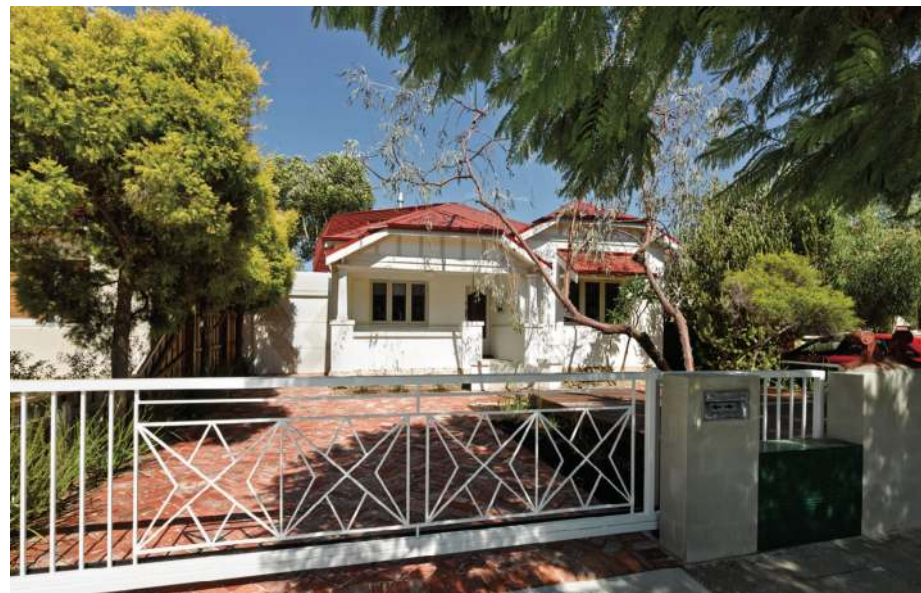
CASA31_4 Room House explores 4 primary spatial ideas:

- the room to the interior
- the room to the garden
- the room to the horizon
- the room to the sky

the room to the interior explores what existed, years of layering, the art of construction, knowing what to keep, what to reveal and what to remove.

the room to the garden focuses attention to the exterior at ground level, it is purposely heavy and grounded engaging with the earth, the section expands to the exterior, a series of folding screens layer the engagement.

a space of deep sensory delight, an architectural palette cleanser, transitions the ground and upper level, the eyes and nose are overpowered by the burnt and waxed plywood walls and the amber light cast by nan's 1950's sliding door.

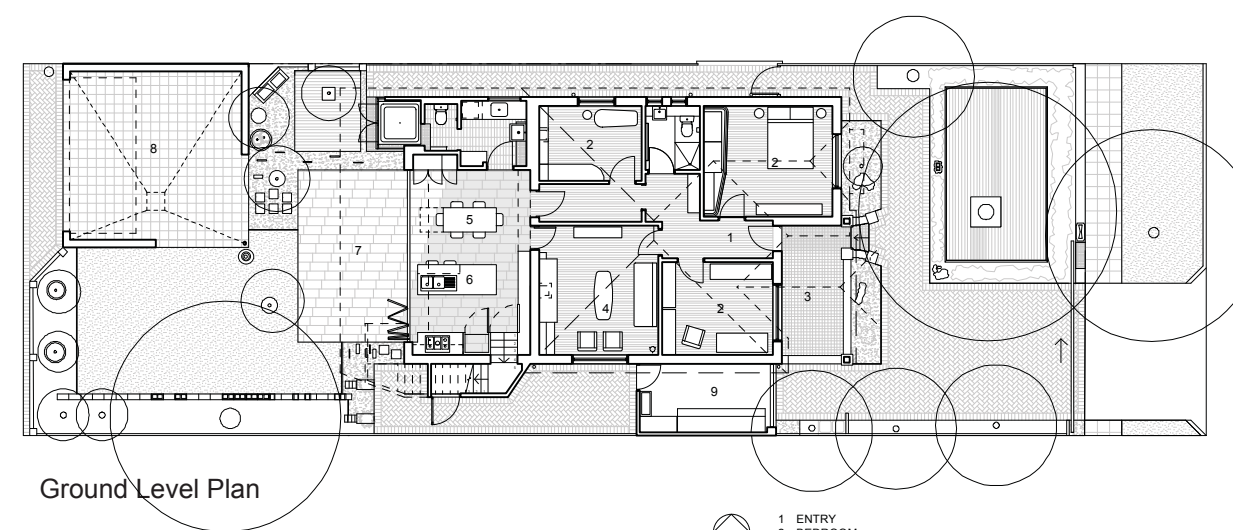


the room to the horizon filters suburban roof tops, the interior is one folded space formed through a play on the one point perspective. operable screens frame the horizon, releasing the interior volume. The 1956 iwan iwanoff cabinet finds a new home, the roughly painted 'i love linda' remains on the chimney, a deep window frames the distant saint marys church.

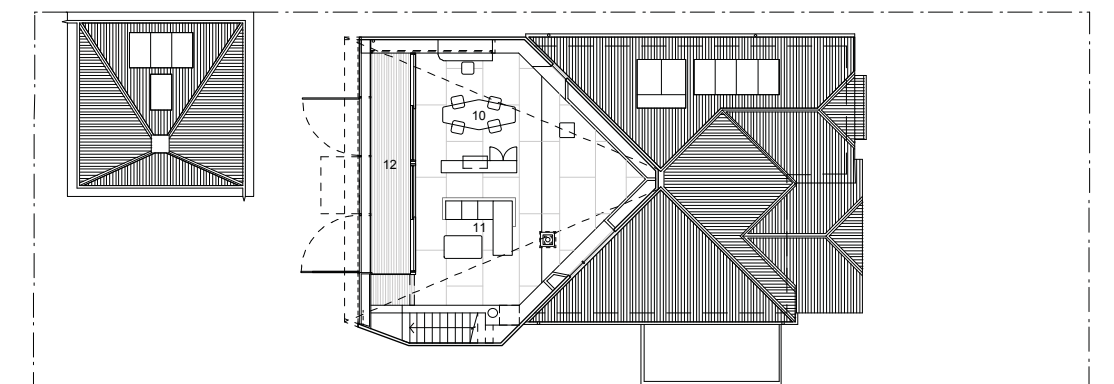
the room to the sky creates a vertical spatial experience, a halo of love poems, a cross of light abstracted by polycarbonate awakens, unlike saint marys church our little spire opens up to the heavens.



Rear view of 'Coolgardie Safe' + Privacy screen



Ground Level Plan



Upper Level Plan

- 1. ENTRY
- 2. BEDROOM
- 3. VERANDAH
- 4. LOUNGE
- 5. DINING
- 6. KITCHEN
- 7. TERRACE
- 8. MULTI-PURPOSE
- 9. WORKSHOP
- 10. STUDY
- 11. LIVING
- 12. BALCONY



This project includes both a macro and micro approach to sustainability. It also extends the meaning of sustainability beyond environmental to include contextual, social, cultural and economic concerns.

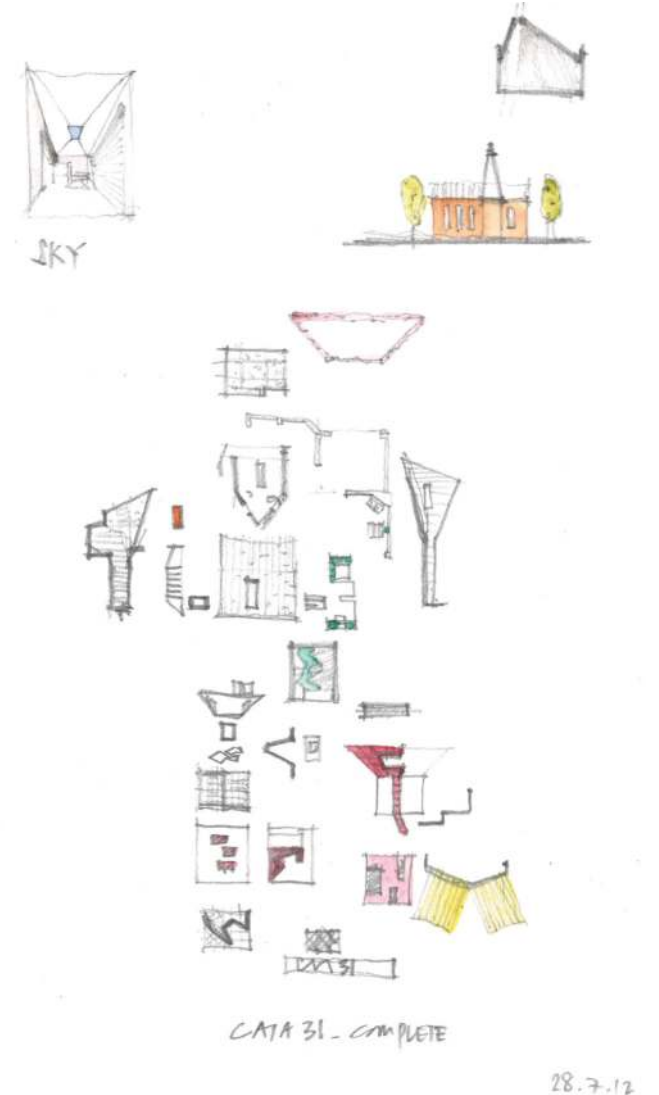
This house will be a case example for the City of Vincent demonstrating the importance of preserving the 1935 Queen Anne Federation home with the capacity to embrace contemporary expectations of living, without comprising the street context or privacy of adjoining properties. The neighbouring house completes the street sequence of 'twins' and twins should never be separated.

The removal of material from site is minimised, an attitude of 'upgrading' ensures that materials once concealed for structural purposes are now used for furniture, decks, doorframes and architraves.

The upper and lower level spaces are protected from the low, intense summer sun with timber framed fixed and operable screens, the upper level is cooled with a manually operated reticulation system that drip feeds water on to the fabric, hot moving air is rapidly chilled, this is Perth's largest 'Coolgardie Safe', a 19th century low-tech refrigeration system used by the Coolgardie WA gold miners to cool edible goods. Windows are strategically located to maximise cross ventilation or for winter heat gain (north facing highlight window with a deep reveal for shading).



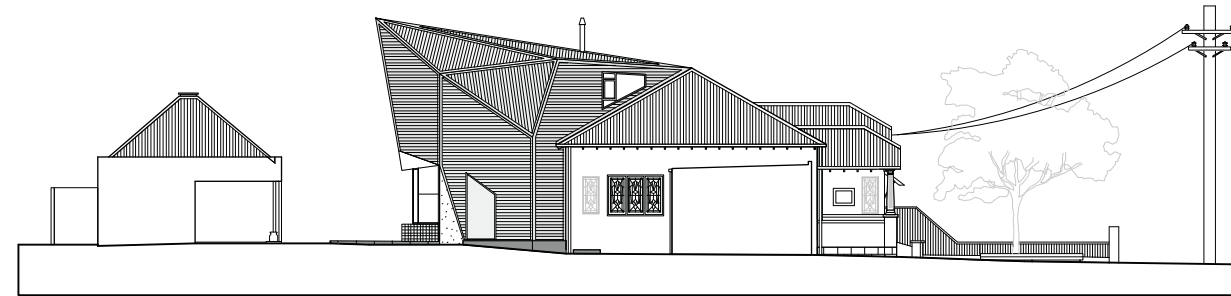
Upper level roof space with constructed one-point perspective



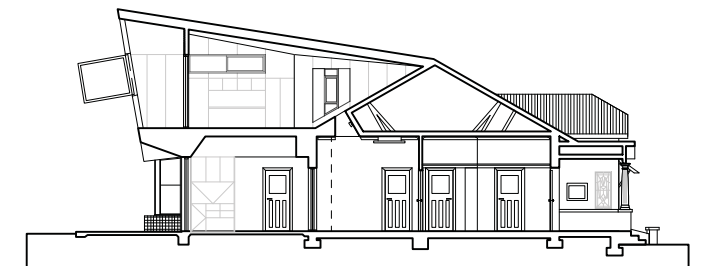
Low energy light fittings, recycled light fittings, low water use and storage, pv cells and solar hot water systems all form part of the sustainable equation but is the focus.

Economy is achieved through re-cycling, restoring, re-interpreting building materials and historic traditions and minimising waste.

This project represents a holistic approach to design and dwelling, where memories are preserved, carbon footprint minimised and the concerns of the broader community celebrated.



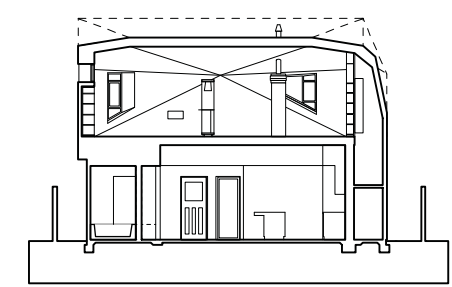
South Elevation



Longitudinal Section



North Elevation



Cross Section

