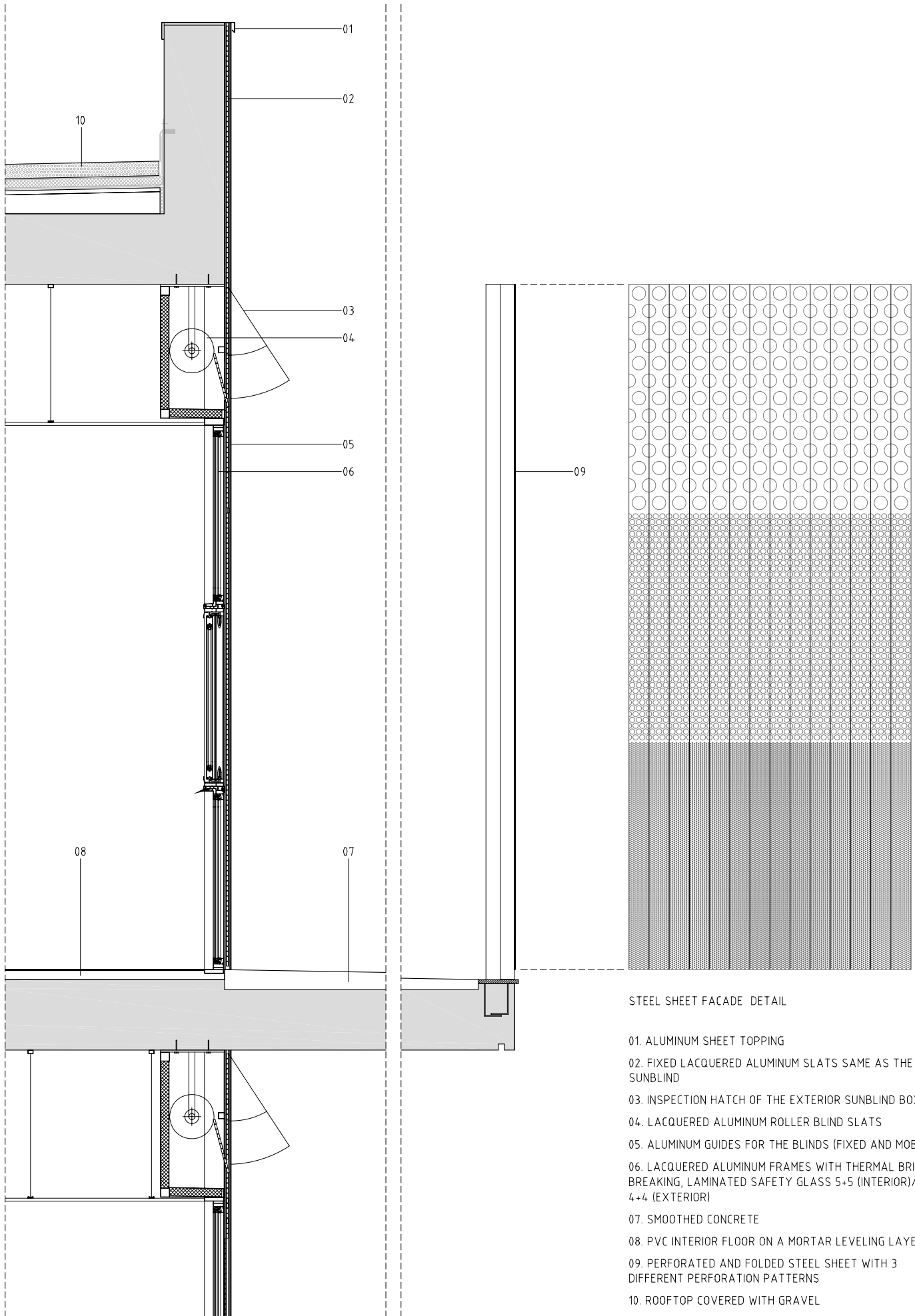


NURSERY IN THE JARDINES DE MÁLAGA. BARCELONA  
 BATLLE I ROIG ARQUITECTES



STEEL SHEET FACADE DETAIL

- 01. ALUMINUM SHEET TOPPING
- 02. FIXED LACQUERED ALUMINUM SLATS SAME AS THE SUNBLIND
- 03. INSPECTION HATCH OF THE EXTERIOR SUNBLIND BOX
- 04. LACQUERED ALUMINUM ROLLER BLIND SLATS
- 05. ALUMINUM GUIDES FOR THE BLINDS (FIXED AND MOBILE)
- 06. LACQUERED ALUMINUM FRAMES WITH THERMAL BRIDGE BREAKING, LAMINATED SAFETY GLASS 5+5 (INTERIOR)/ 6 / 4+4 (EXTERIOR)
- 07. SMOOTHED CONCRETE
- 08. PVC INTERIOR FLOOR ON A MORTAR LEVELING LAYER
- 09. PERFORATED AND FOLDED STEEL SHEET WITH 3 DIFFERENT PERFORATION PATTERNS
- 10. ROOFTOP COVERED WITH GRAVEL