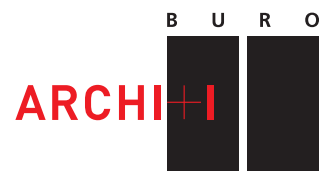




DWELLING V. IN R. [2012]

BURO II & ARCHI+I | urban planning | architecture | engineering | interior design

Rue J. Jordaensstraat 18a, B-1000 Brussel-Bruxelles | T +32 2 641 88 00 | F +32 2 640 53 55 | E info@b2ai.com | www.b2ai.com
Hoogleedsesteenweg 415, B-8800 Roeselare | T +32 51 21 11 05 | F +32 51 22 46 74 | E info@b2ai.com | www.b2ai.com
Bellevue 5, B-9050 Ledeborg [Gent] | T +32 9 210 17 10 | F +32 9 210 17 19 | E info@b2ai.com | www.b2ai.com



DWELLING V. IN R. [2012]

A PROJECT DATA

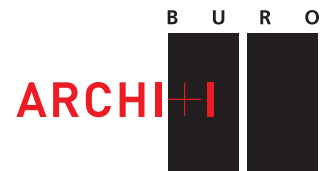
Client
V.

Description and location
Building a dwelling + decoration (reconversion of a farm)
R.

Team
Arch. Tom Vandorpe [project director]
Arch. Kevin Huysentruyt [design architect]
Arch. Lorenzo Kemel [project architect]
Int.arch. Anne-Mie Vermaut [interior architect]

Status
Actual execution term: 1,5 years
Handover date: January 31, 2012

Surfaces
Area surface: 20.212 m²
Land use of the building: 499,17 m²
Gross floor area: 417,04 m² [dwelling] + 392,06 m² [storage space]



DWELLING V. IN R. [2012]

Context

The farm used to consist of several buildings clustered around a residential section. Most farms in the Roeselare area consist of two volumes, situated either parallel or perpendicular to each other. The new home was embedded parallel to the barn. Positioning the home in an L-shape opposite the barn will define the residential section a superior way and strengthen the character of the space. The residential section lies at the heart of the site and acts like a turntable for all internal circulation.

Architecture

Its simple volume and the use of contemporary materials (wood and zinc) transform the home into a modern interpretation of a centuries-old archetype that now stands as a harmonious yet exciting single entity with the traditional barn in red brick.

Engineering

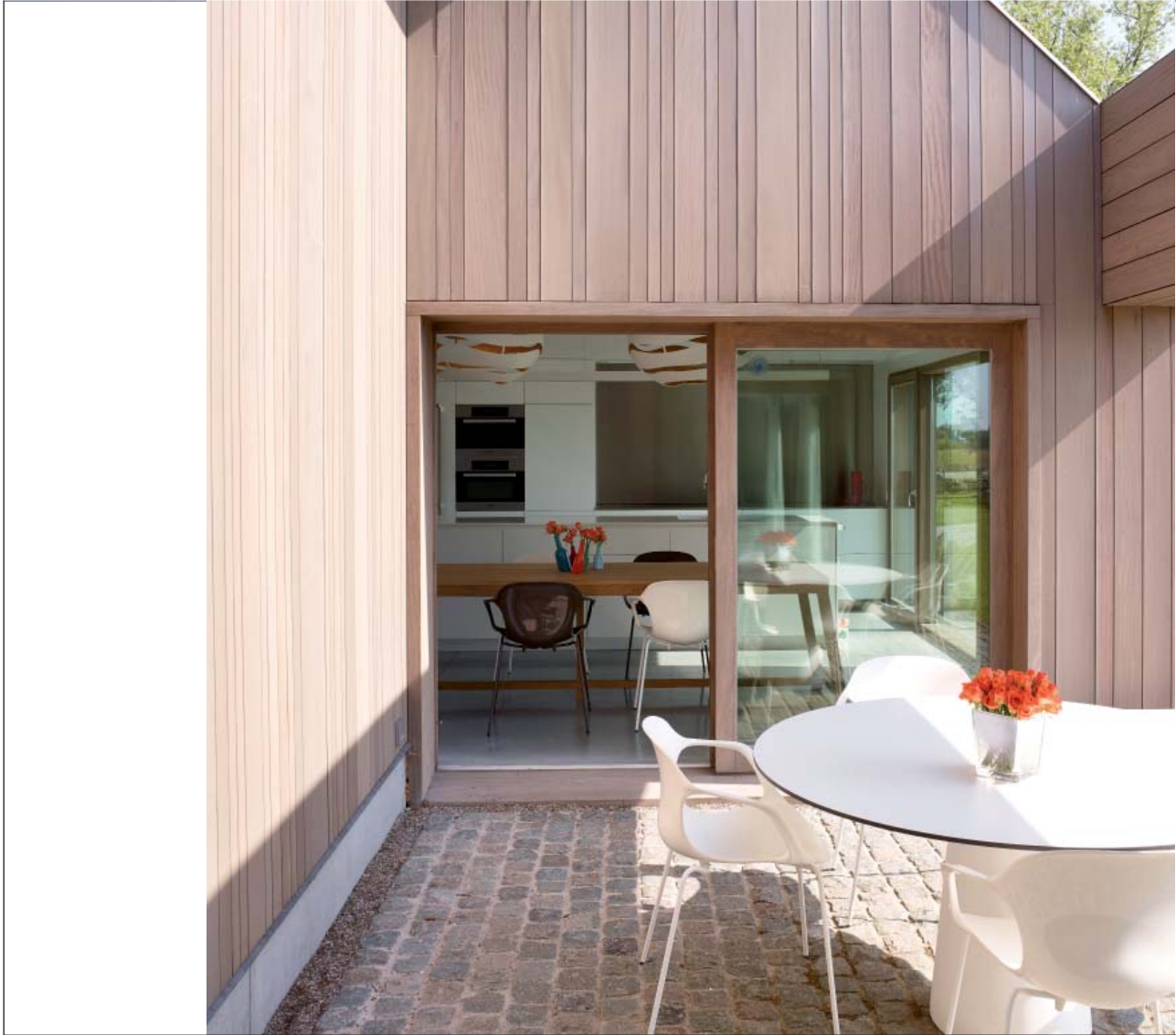
The living areas are oriented towards the most valuable part of the site in the west and towards the courtyard or residential section. The bedrooms face north and east, providing panoramic views of the surrounding countryside.

Interior design

Colourful indoor objects set the scene in the interior, where the basic colour is white, in combination with a grey polished concrete floor and the warmth conveyed by the wooden windows.



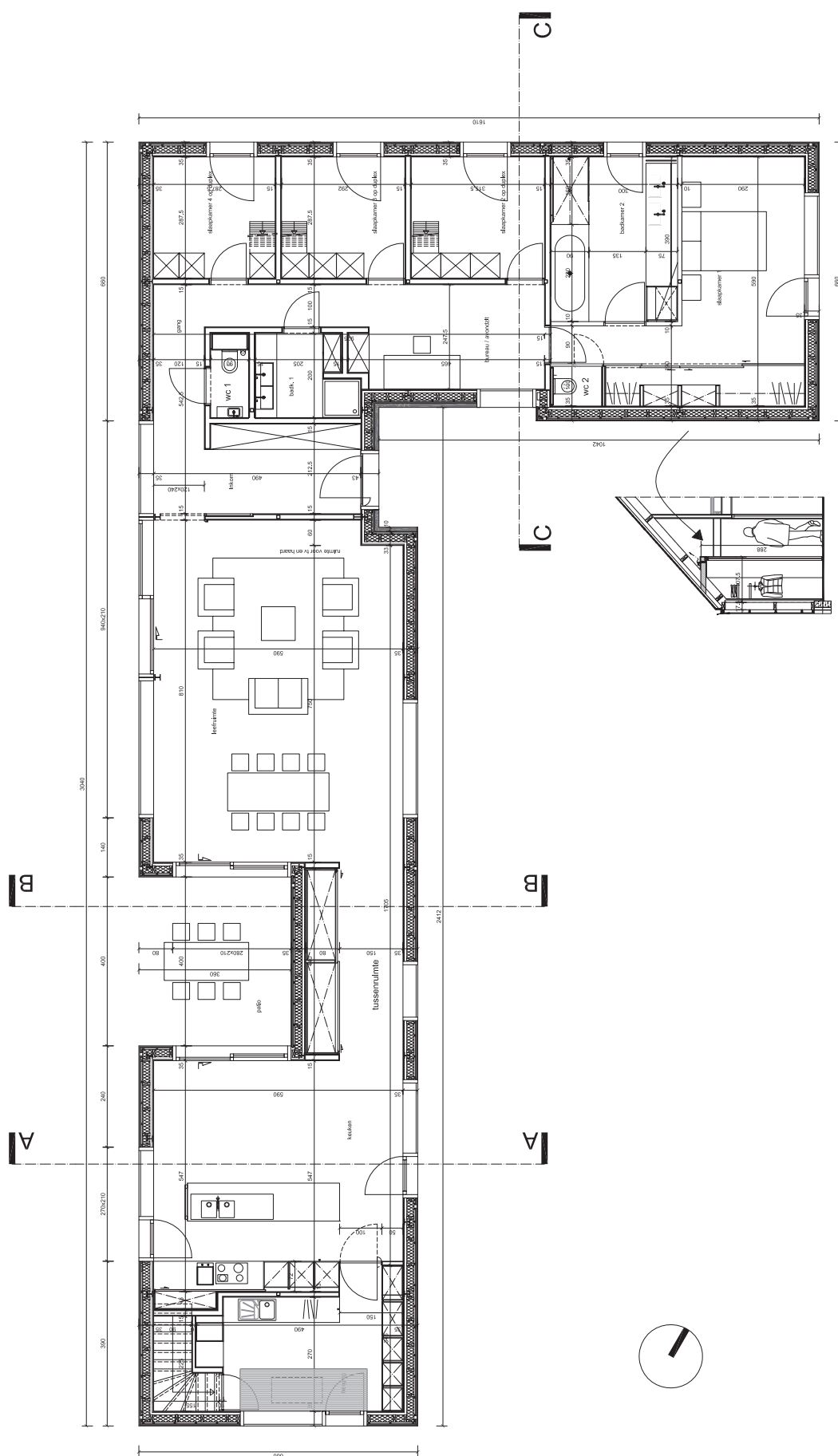














DWELLING V. IN R. [2012]

Team

Architecture: BURO II & ARCHI+I, Roeselare
Interior architecture: BURO II & ARCHI+I, Roeselare
Projectmanagement: BURO II & ARCHI+I, Roeselare
Structural conception: BURO II & ARCHI+I, Roeselare
Structural work: BURO II & ARCHI+I, Roeselare
Safety coordination: Crabbe Antoon

Contractors

Carcass (basement): Uyttenhove Kelderbouw, Ingelmunster
Carcass (steel framing): Devoldere Metaalbouw nv, Pittem
Carcass (floor panel): Vermeersch Bart
Zinc: Moerkerke Dakwerken bvba, Wevelgem
Roofing: Fierens bvba, Zedelgem
Patch work: DeMo Pleisterwerken, Moorslede
Polished concrete: Rapidsol bvba, Oeselgem
Sanitary/HVAC: Goddeeris nv, Roeselare
Electrical installation: Kristoff Vanackere
Exterior joinery: Seys Andre, Sint-Eloois-Winkel
Painting + rubber floor: Maes bvba, Kaprijke
Fireplace: De Puydt Haarden nv, Evergem
Interior design: Deco-Lust nv, Moorsele

