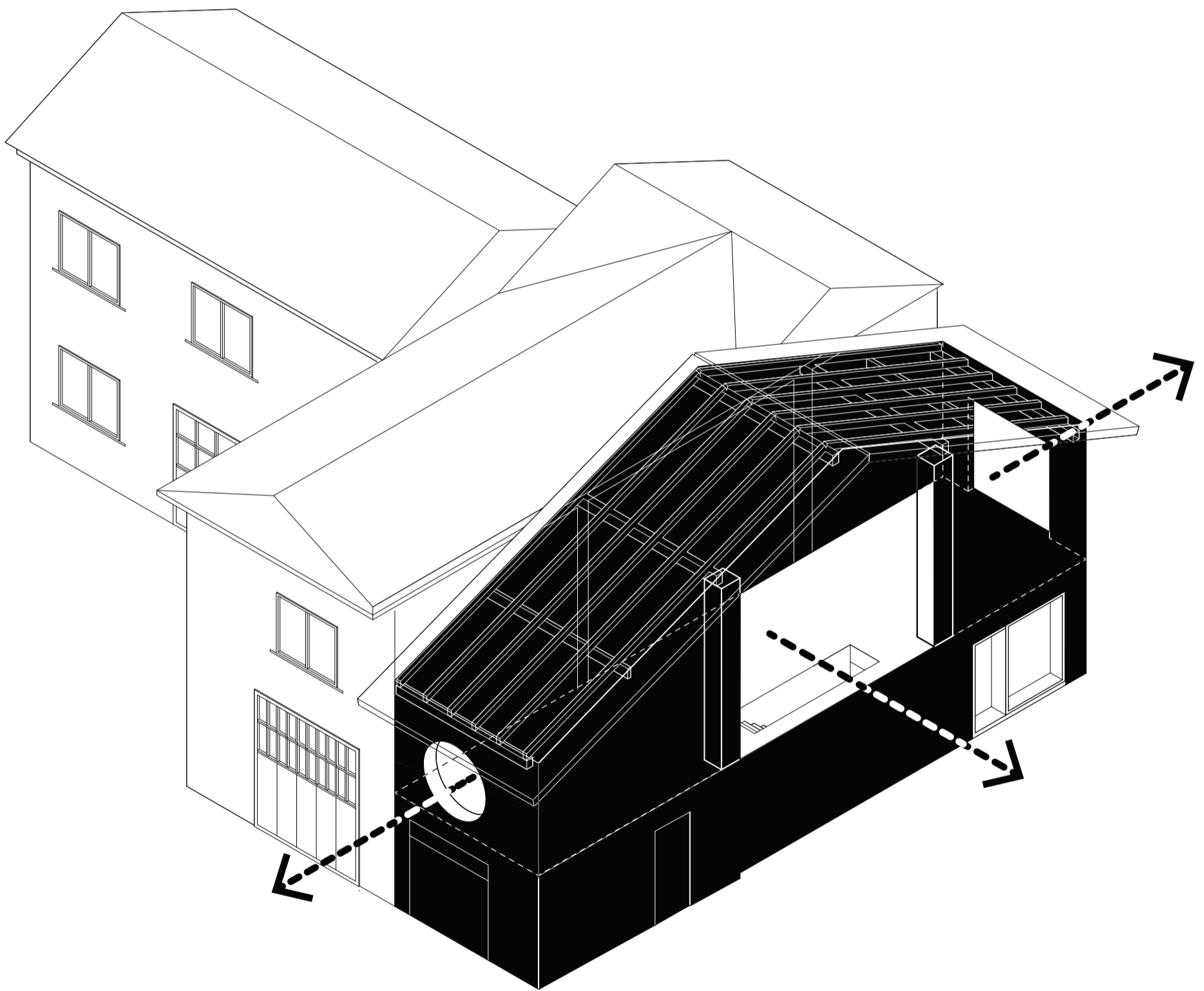


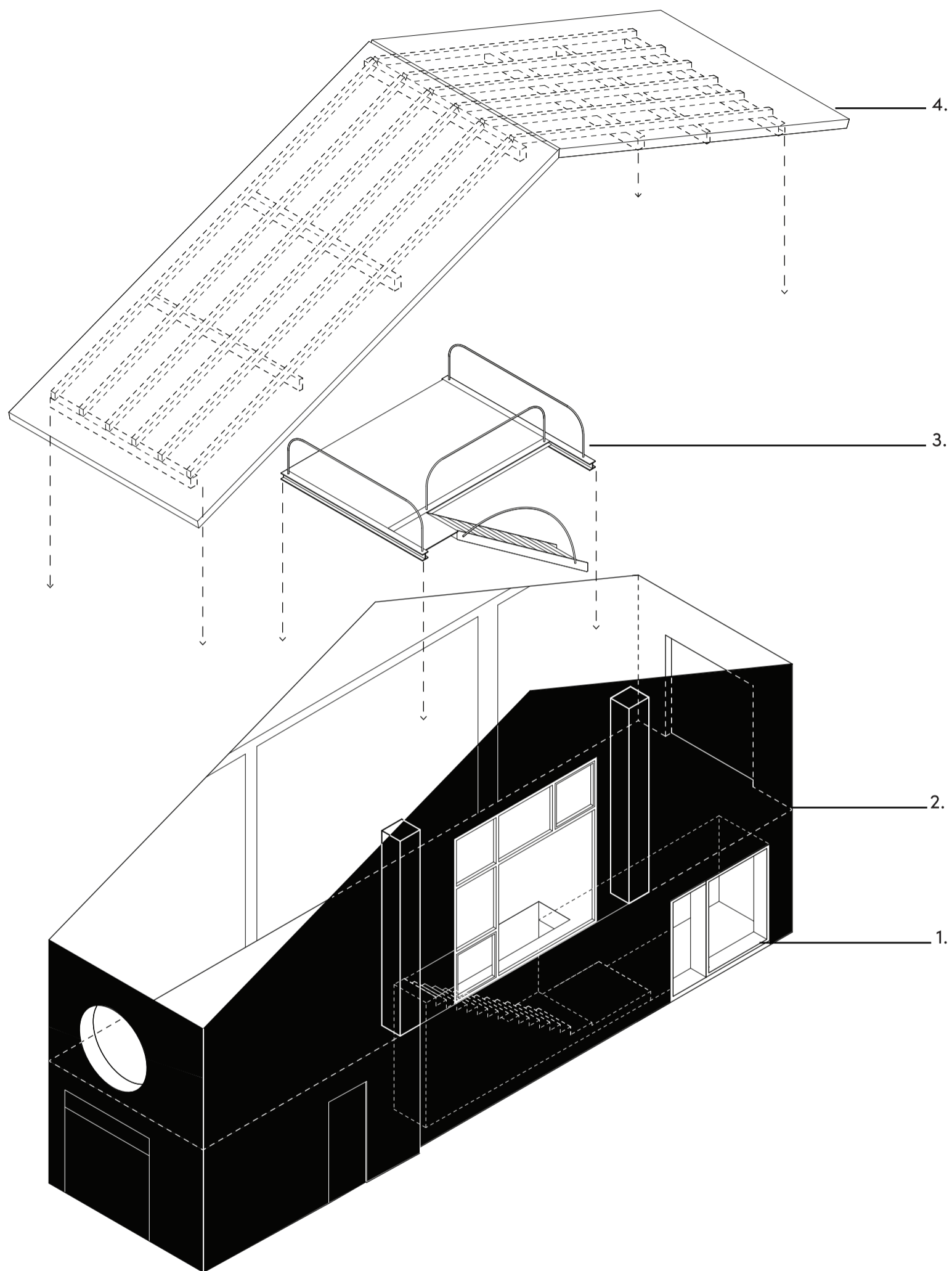
AXO OF THE EXISTING

The diagram is a representation of the original condition of the barn. An urban block of 3.5 m by 15 m between the houses. The space, which has been disguised as a storeroom, was originally a barn that has been patched and resewed over time, shedding its skin according to the needs of each owner. At this point in its history, the barn had undergone various modifications. The original entrance, originally intended for storing straw, had been sealed with bricks at a later time, leaving behind only a small aperture. There were two additional standard-sized openings that allowed minimal natural light to filter into the interior. The primary entry point was situated within the warehouse floor.



AXO OF CONCEPT STRATEGY

The diagram shows the architectural concept of the project, highlighting two key objectives: maximizing openings to allow the entry of natural light while also restoring the original structure of the space. Together, these strategies not only prioritize the integration of natural light, but also emphasize the preservation and revitalization of the space's original architectural elements, resulting in a harmonious blend of functionality, aesthetics, and historical value.



AXO OF THE DIFFERENT LEVELS AND FEATURES OF THE SPACE

1. Ground Floor Entrance: Serves as an access point for visitors, designed as a large display window to the street.
2. First floor with large windows: the openings, as already mentioned, contribute significantly to the overall character of the building, allowing not only the entry of extensive natural light but also evocative views of the surrounding context.
3. Mezzanine level: designated as a study area, it is positioned in the center of the space and acts as a focal point. It has a contribution to the symmetrical spatial organization of the overall space, adding visual balance and functionality.