

# Tree-ness House

akihisa hirata architecture office



## « Design summary »

Site : Tokyo, Japan  
Program : Housing, Gallery  
Structure : RC  
Floor : 1-5F  
Site area : 138.77m<sup>2</sup>  
Total area : 331.38m<sup>2</sup>  
Building height : 17.70m

Design : akihisa hirata architecture office  
Structure : OAK  
Equipment : EOS plus  
Plants : Yuichi Tsukada(Onshitsu)  
Textile : Yoko Ando(yoko ando design)  
Construction : Ohara Komusho  
greenery : Ikegami





©Vincent Hecht



©Vincent Hecht



©Vincent Hecht

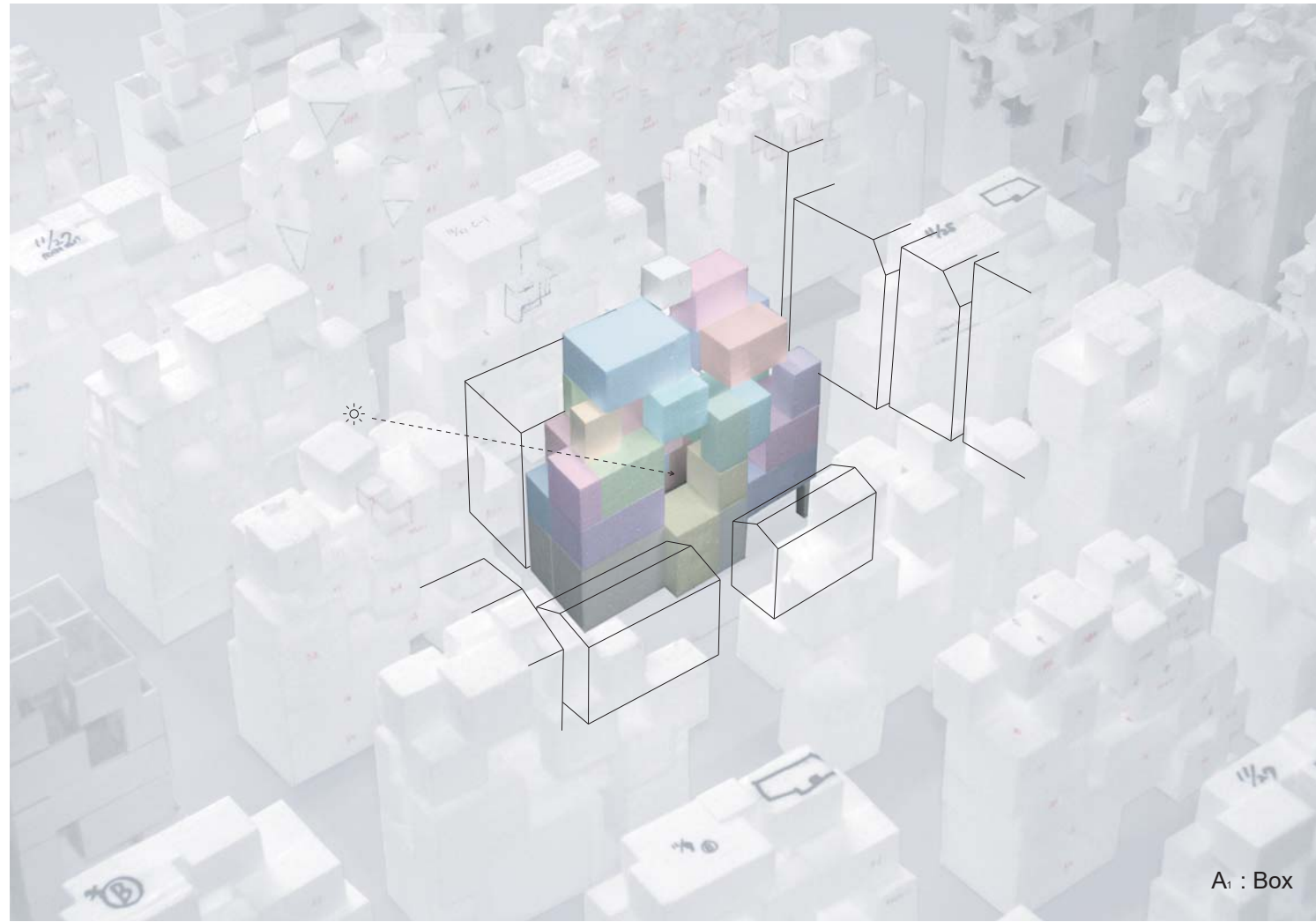
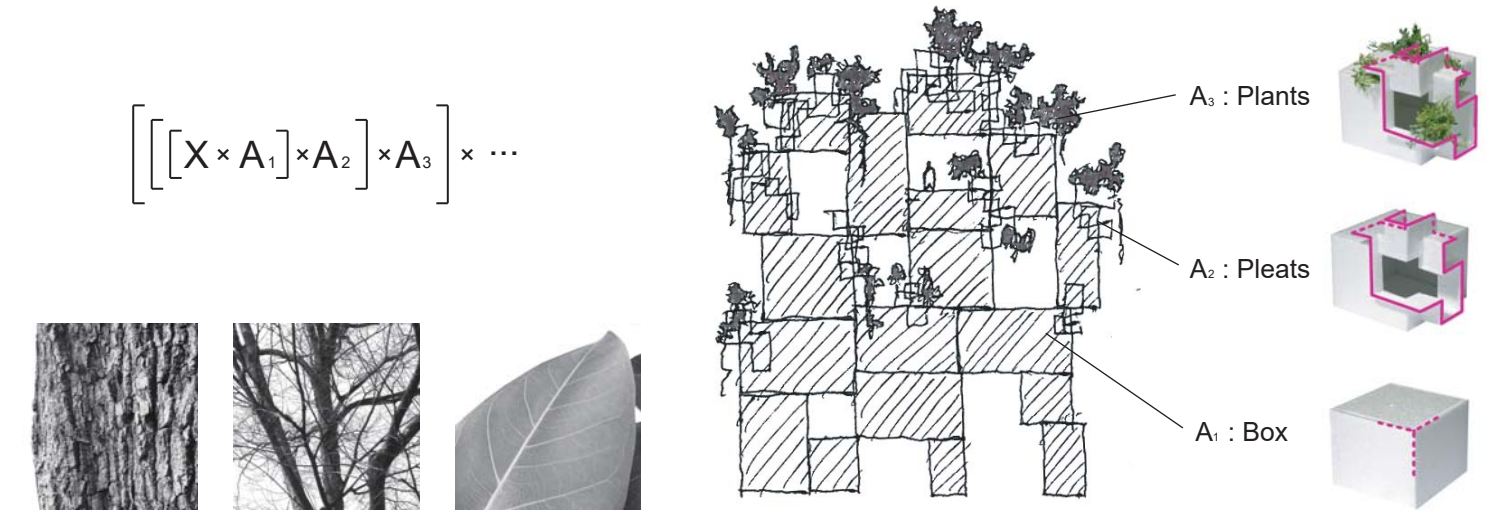
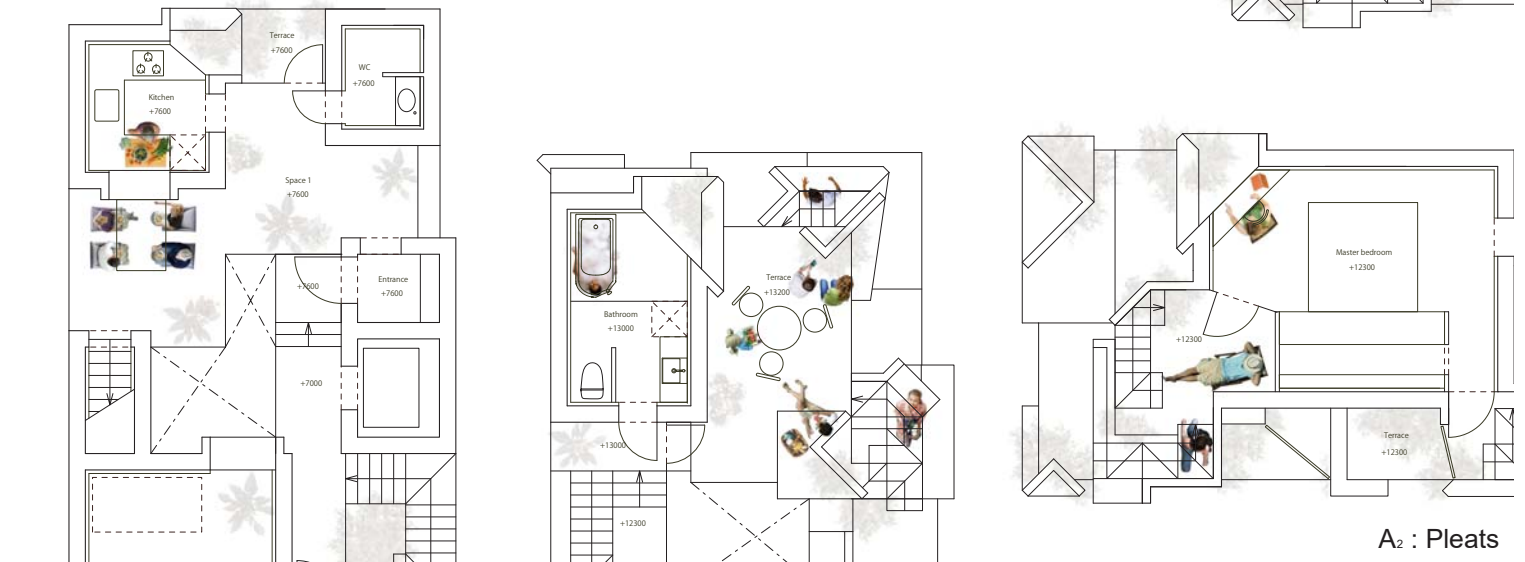
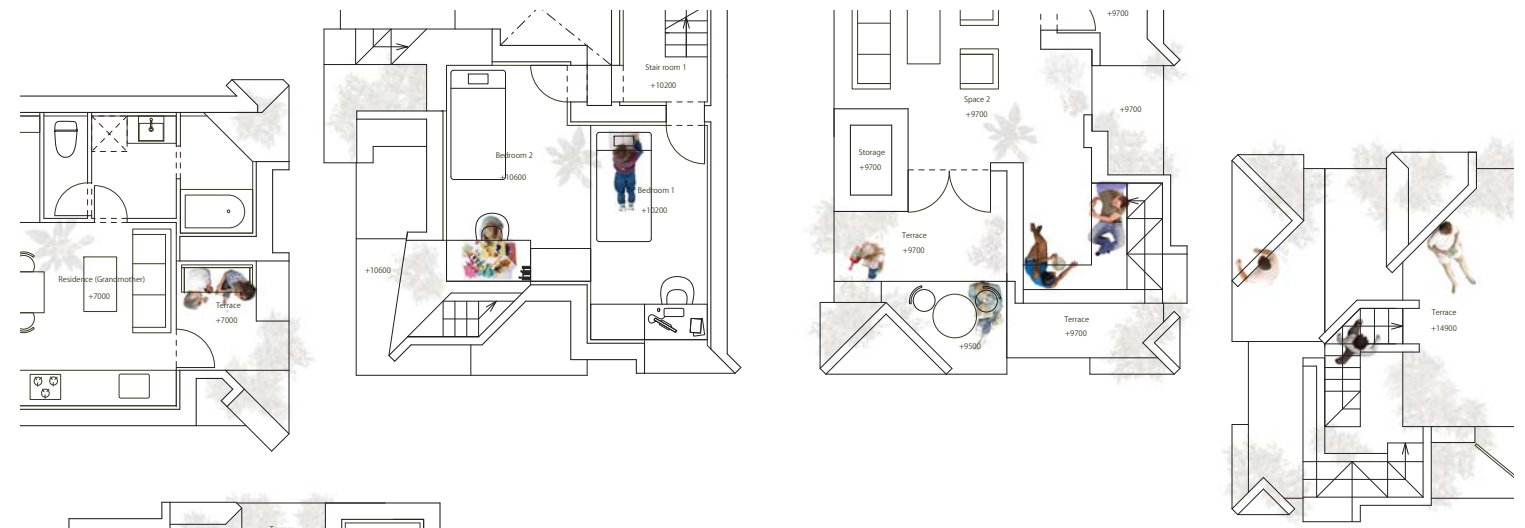


# Tree-ness House

The building's program is a residential complex and tenant spaces located in Tokyo, Otsuka. The site has a narrow width and long depth, allowing for a narrow profile volume to be assumed from the condition. In contrast to typical layered architecture which only stacks floors, this design aims to create an organic layering system. The design includes objects which typical architecture doesn't count in, such as exterior spaces and the street to generate spaces that are 3-dimensional. For example, much like a tree creates spaces in the air, the design creates a tangled space which is ambiguous in interior-exterior for the people.

By composing boxes, a layered volume with voids is created. Inside the boxes, there are closed spaces like bedrooms and outside boxes are for the terraces or open interior spaces enclosed by glass. Boxes have pleated openings and this allows the ambiguity of the inside-outside relationship. Around these pleats, greenery is planted and this creates 3-dimensional gardens on the perimeter of the building. The arrangement of functional volumes and voids, openings, and greenery tangles and integrates into an organic whole.

The design aims to develop the possibility of nature-like architecture in other projects too, but the design developed further more in this project. The trunk and leaves have a different appearance but the same quality in the foundation and this relationship creates an organic layering structure for architecture. The design releases this new architectural principle which is able to connect a complex ecosystem to the city.





# A1 : Box

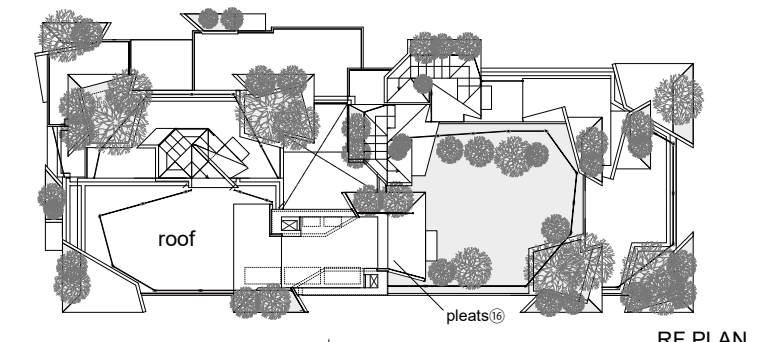
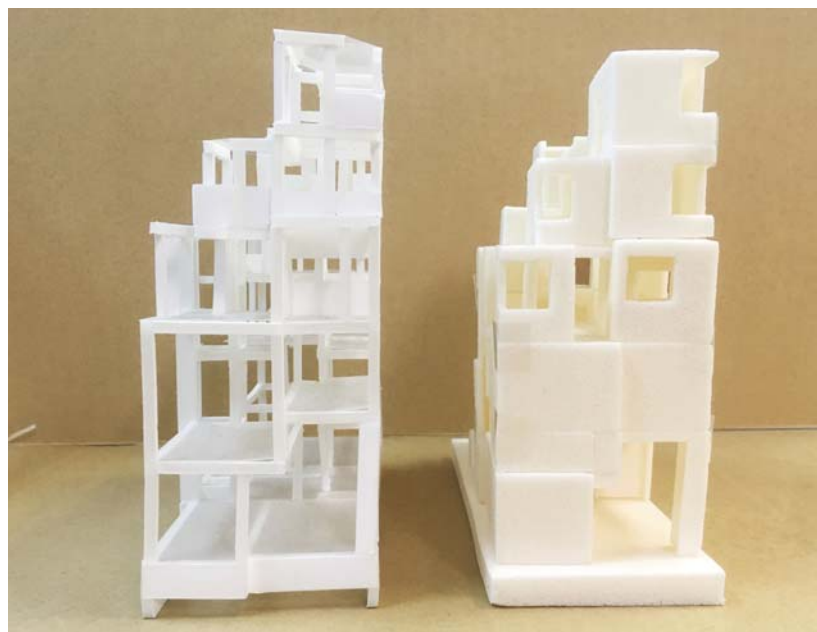
The concrete box has a ramen structure. Basically, all columns and beams are contained in the concrete wall with a thickness of 250 mm.



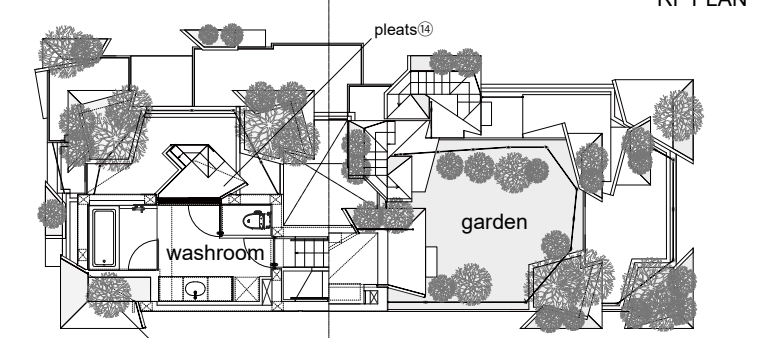
RC Box



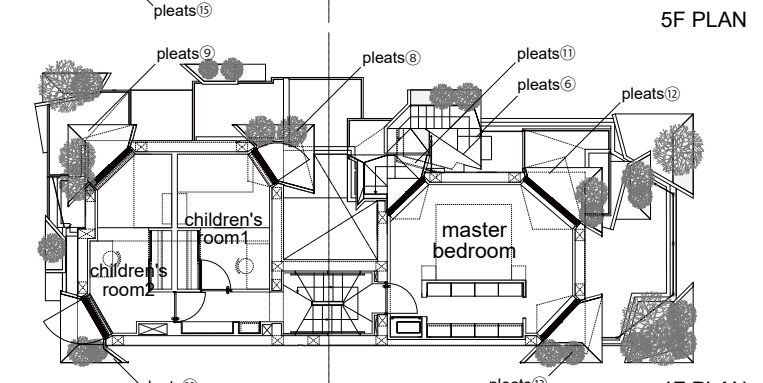
Structure



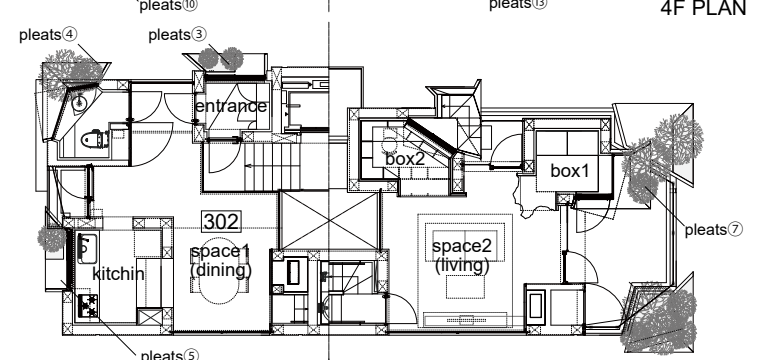
RF PLAN



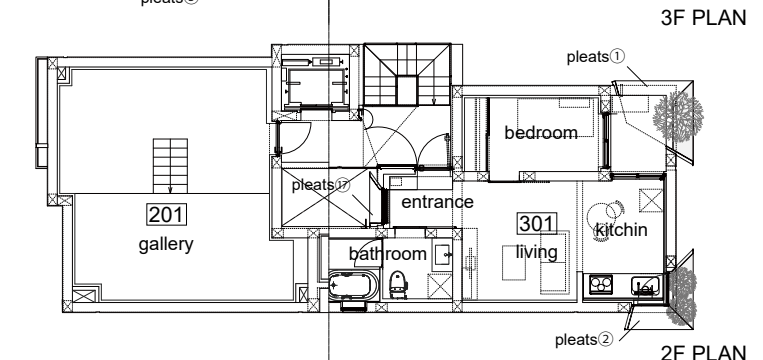
5F PLAN



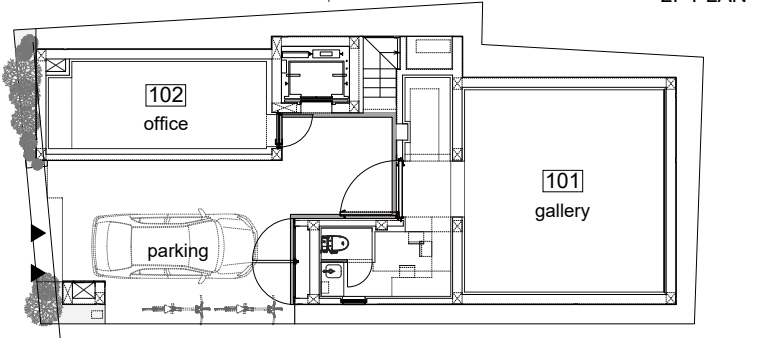
4F PLAN



3F PLAN



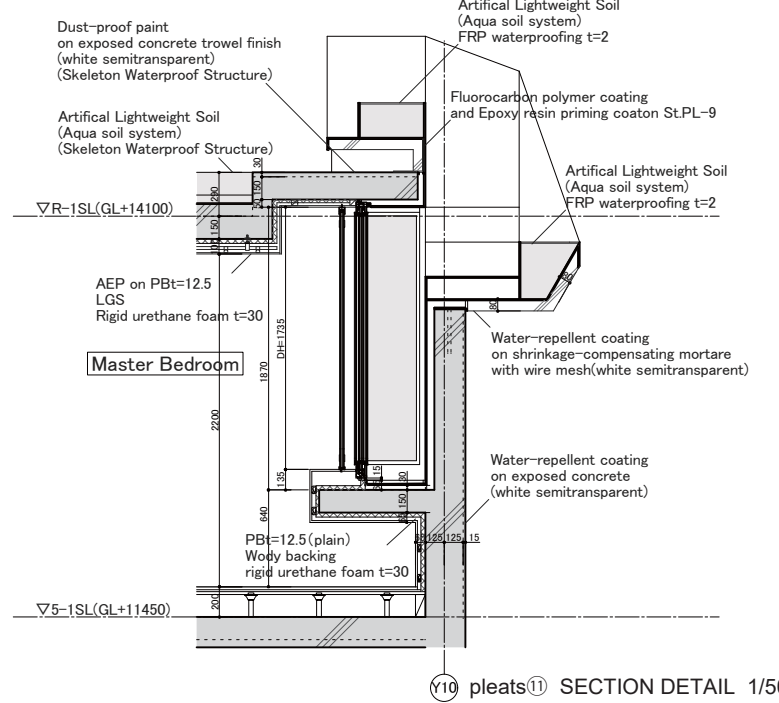
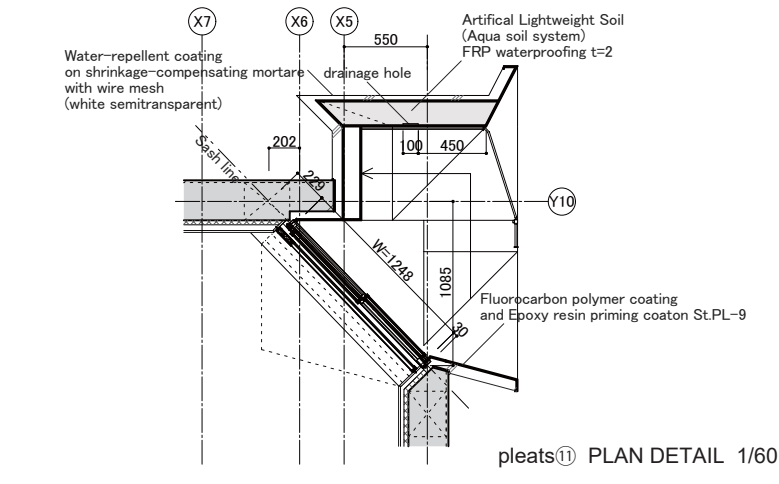
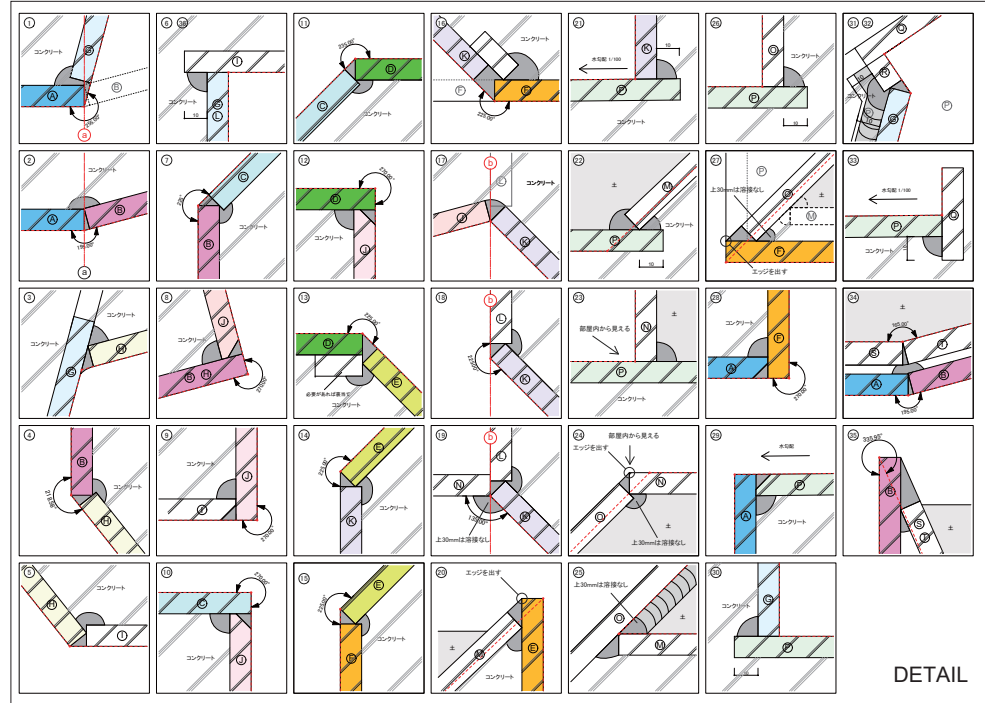
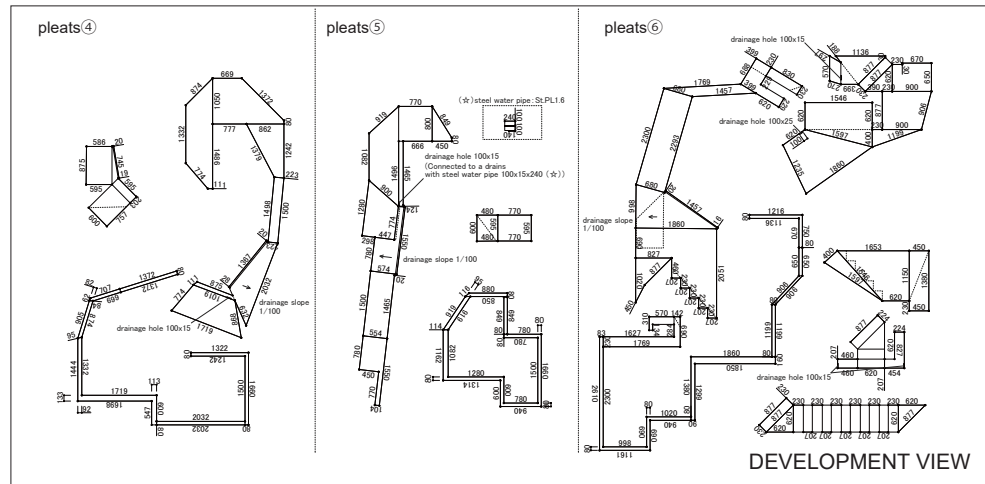
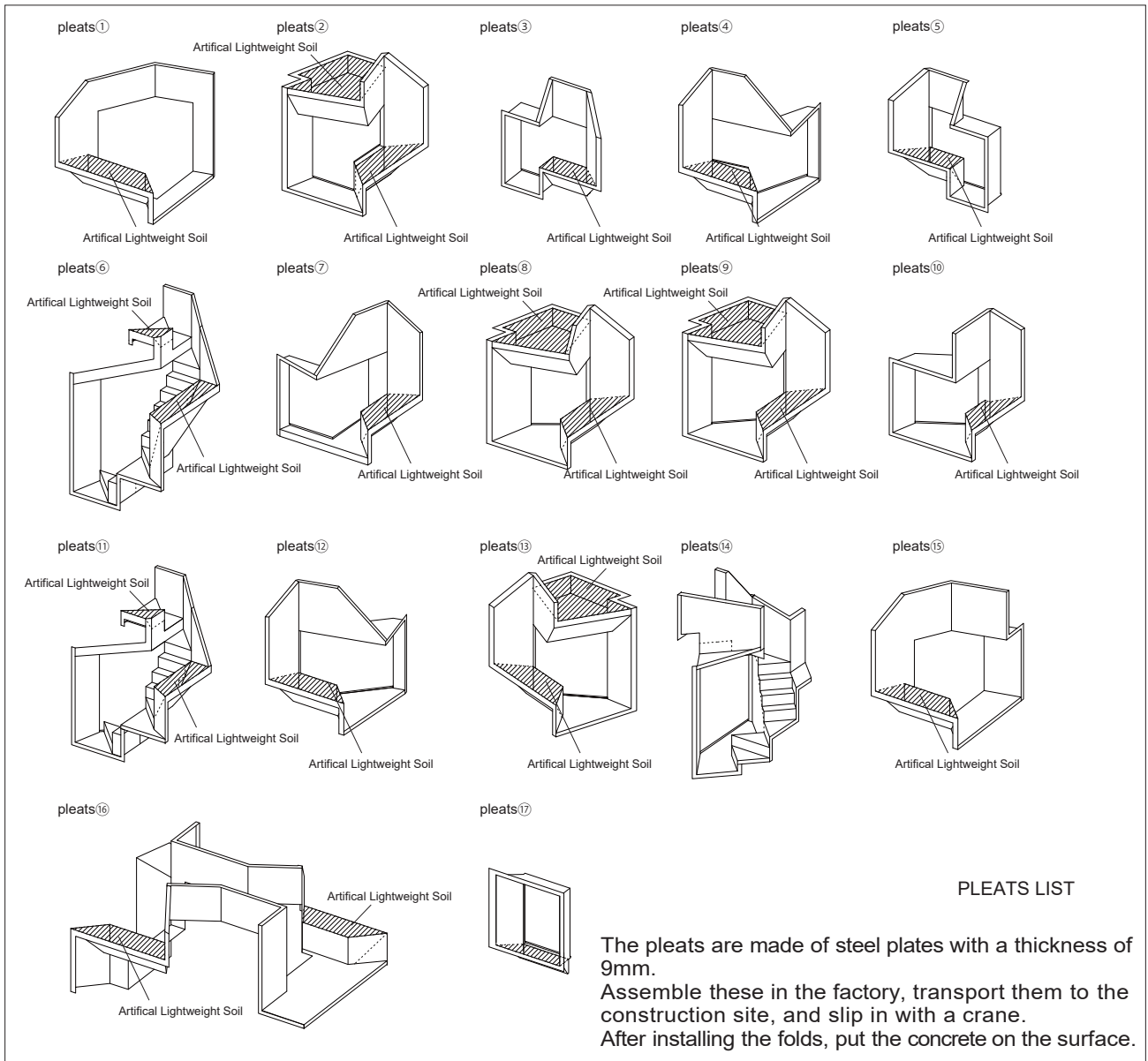
2F PLAN



1F PLAN 1/200



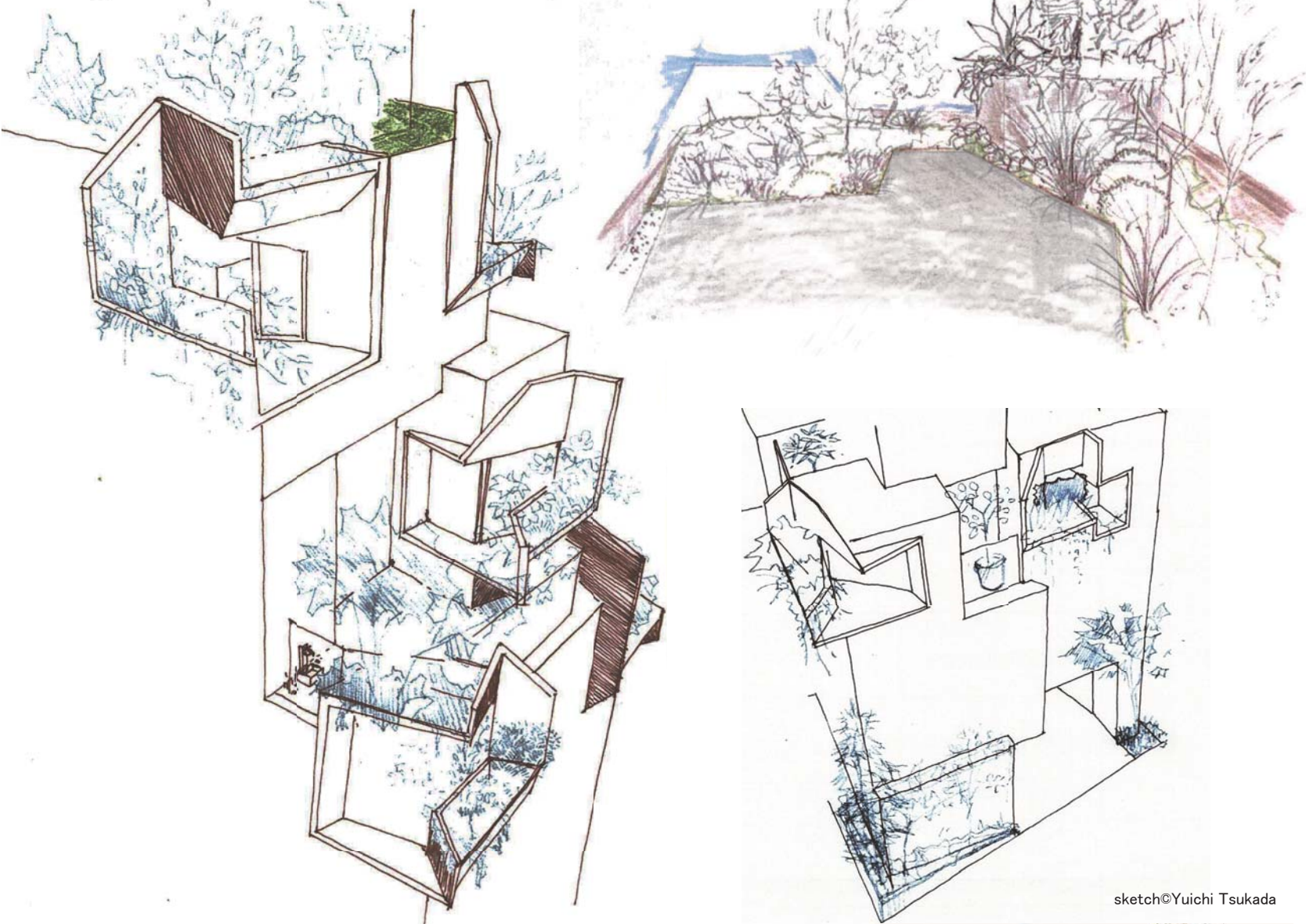
# A2 : Pleats





# A3 : Plants

Planting was designed by Mr. Yuichi Tsukada of planting designer. Plants were selected according to the microclimate of each place.



sketch©Yuichi Tsukada



©Vincent Hecht

