

STONE APARTMENT

Dolores Alcaide 8. Valencia

The character of a given space depends, to a large extent, on the way light is manipulated. Light can be contained with opaque surfaces, be filtered by glass, translucent elements or lattices; it can even be transformed into direct or diffuse light when creating the openings. Thus we recognize a space on virtue of how light bathes the surfaces and its materials. The 3 cm thick polished limestone partitions of the apartment, properly solves the plan, but it is the light they reflect that will be kept as a memory: the speckled skin of the stone as a backdrop to the life in the house.

Project team
Lidón Sánchez

Photography
David Zarzoso



STONE APARTMENT. 2019



STONE APARTMENT. 2019



STONE APARTMENT. 2019



STONE APARTMENT. 2019



STONE APARTMENT. 2019

The stone becomes this way both structure and finish, and its silky skin, full of character, acts as a backdrop to the activities of its inhabitants. The stone's cutting makes also room for 1 cm, thick glass pieces inserted in-between the stone, allowing for the light to come in and out of the core space.



STONE APARTMENT. 2019



STONE APARTMENT. 2019



STONE APARTMENT. 2019



STONE APARTMENT. 2019



STONE APARTMENT. 2019



STONE APARTMENT. 2019



STONE APARTMENT. 2019

The new core to the house is conformed of the main bathroom and a small restroom, and its construction is approached through tailor made solutions developed to meet the particular conditions of the workplace. Thus for example, the core's perimeter walls are built with 3 cm thick solid limestone pieces, anchored to floor and ceiling -and among them- acting as partitions, and not as mere decorative sheathing.



STONE APARTMENT. 2019



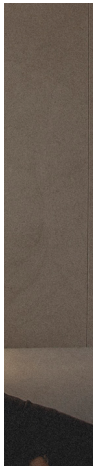
STONE APARTMENT. 2019



STONE APARTMENT. 2019



STONE APARTMENT. 2019



Iterare arquitectos