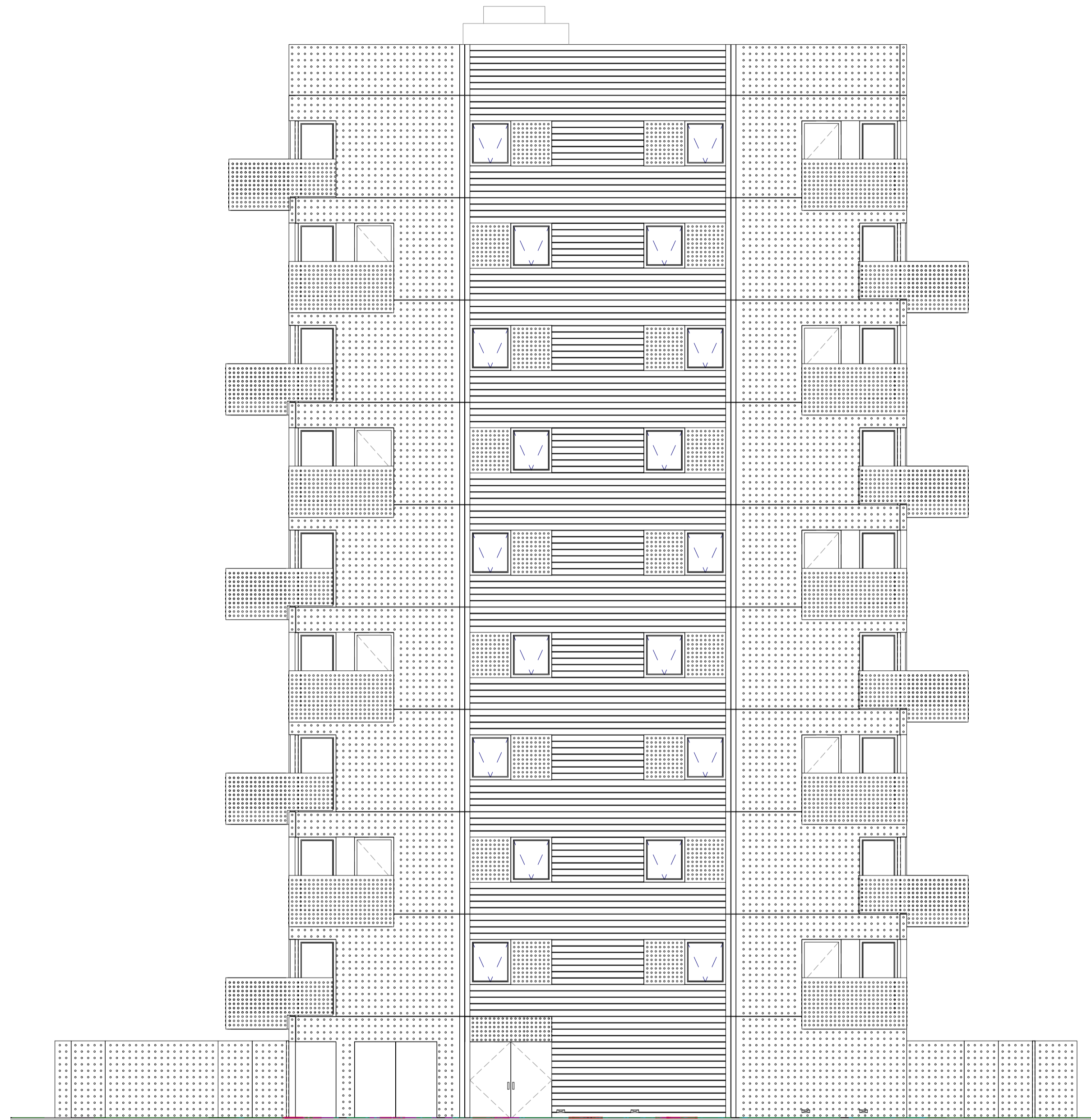


01 WEST ELEVATION



02 SOUTH ELEVATION

KEY:

REV	DATE	revision note
01	21/09/11	revision note: STAGE D ISSUE
02	02/12/11	Issued for Stage E
03		Brick base cladding changed to re-cast stone.
04		Brick based garden walls changed to re-cast stone.
05		Setting out of doors and windows amended as per design development.
06		Setting out of cladding panels amended. Type of texture to cladding panels changed. Locations of joints/area of smooth cladding amended as per design development.
07		Locations of balconies adjusted. Balcony cladding changed to perforated metal. Perforated metal next top central windows introduced. Entrance door moved.
08	16/12/11	Issued for Stage E amendments; windows updated
09	12/03/12	Precast conc. panels and external wall depth updated.
10		Opening direction of balcony doors revised. Note added.
11	25/05/12	For Information: Windows updated
12	12/06/12	Issued for Stage F
13		Panel pattern revised; Panel sizes updated; Detail tags added; Garden walls revised. Notes added. Legend and specification tags revised.
14		Note updated. Panel to entrance area revised. Steel posts to balconies added. Vent opening sizes revised, slab ventilation openings added.
15		Updated following LOR comments, for Stage F;
16		Corner windows changed to fixed full height glazing
17		
18		

MATERIAL KEY

01	H42.111A	Precast Stone Panel with recessed pattern
02	H42.111A	Precast Stone with recess
03	H42.111A	Precast Stone with rebate pattern
04	H43.120A	PPC coated Panel to Roof Upstands
05	H72.130A	PPC metal soffit to Balcony
07	J31.130A	Inverted Roof Coating
08	L10.411A	PPC coated composite windows
09	L10.413A	PPC coated composite Balcony Doors
10	L10.550A	Glazed metal entrance Screen
11	L30.533	PPC coated Perforated metal cladding to balcony
12	L30.554	PPC coated metal Canopy to Entrance
13	Q25.260A	Anti-slip timber deck to Balcony
14	L10.411	PPC coated composite windows to E1 South Facade
15	L10.413	PPC coated composite Balcony Doors to E1 South Facade
16	H42.111A	Perforated metal cladding to Precast Stone with recess
17	L10.652	Grille
18		PPC coated perforated metal panel to match metal gates and balconies

NOTE:

This drawing is the last revision issued for construction under the building contract. This drawing has not been verified by site survey and construction tolerances may have resulted in differences between this drawing and the finished building. The references on this drawing refer to details which were required for construction but may not have been updated to incorporate the final building design. The drawing has been given a revision reference and any specific comments are noted in the revision column.

- PLEASE REFER TO LANDSCAPE ARCHITECT'S DRAWINGS FOR CLARIFICATION OF LANDSCAPE DESIGN

- NB: CDP PACKAGES WHICH HAVE BEEN ISSUED FOR CONSTRUCTION WITHOUT PRIOR INPUT FROM TRADE CONTRACTORS REQUIRE FURTHER DEVELOPMENT BY TRADE CONTRACTOR, WHERE APPLICABLE, AS PER THE DRM, TRADE CONTRACTOR TO ISSUE FABRICATION DRAWINGS FOR REVIEW AND COMMENTS BY ARCHITECT, WHICH WILL BE RETURNED STAMPED WITH STATUS A, B OR C. TRADE CONTRACTOR NOT TO ORDER MATERIALS OR START FABRICATION PRIOR TO SHOP DRAWINGS HAVING ACHIEVED STATUS A.

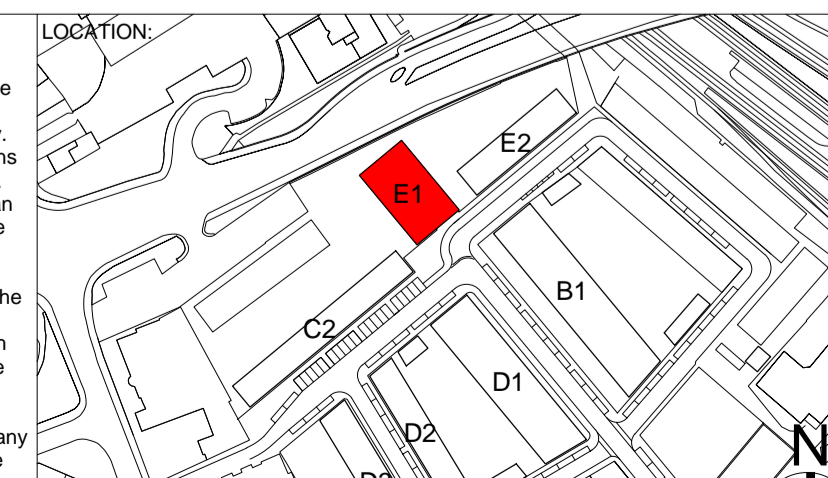
- THESE DRAWINGS ARE TO BE READ IN CONJUNCTION WITH ALL RELEVANT SUBCONTRACTOR DRAWINGS. REFER TO EXPLORE / DELTA / NORDAN DRAWINGS FOR SPECIFICS OF CONCRETE FRAMES AND PANELS, SMARTWALL DETAILS, METALWORK AND GLAZING AND WINDOWS.

Texture shown on drawing for cladding panels, metal balustrades, metal cladding panels and metal gates indicative, refer to drawing AHMM-WSQ-E1-EL-285/286 for setting out.

P07	10/09/12	Door types 37A(H) and 37B(H) shown
C01	10/01/13	Issued for Construction, Lift over-runs added, Titleblock note added
C02	03/12/13	External concrete walls to ground floor changed to perforated metal panels.
C03	09/05/14	FINAL ISSUE

NOTE:

- Do not scale from this drawing.
- All dimensions to be checked on site by the contractor and such dimensions to be his responsibility.
- Report all drawing errors, omissions and discrepancies to the architect.
- This document may be issued in an uncontrolled CAD format to enable others to use it as background information to make alterations and/or additions. In that instance the file will be accompanied by a PDF version. It is for those making such alterations and additions to ensure that they make use of current background information. AHMM Ltd accepts no liability for any such alterations or additions to the background information or arising out of changes to background information which occur prior to alterations of additions being made.



ALLFORD HALL MONAGHAN MORRIS

ARCHITECTS Ltd
2ND FLOOR, BLOCK C, 5-23 OLD STREET, LONDON EC1V 9HL
TEL 020 7251 5261 FAX 020 7251 5123 WEB WWW.AHMM.CO.UK

job title
WILLIAM STREET QUARTER

drawing title / location
**BLOCK E1
ELEVATION WEST+ SOUTH**

drawing no.	checked	scale	job	status
SD	CM	1 : 100@A1:1:200@A3	10154	FINAL ISSUE

drawing no. **AHMM-WSQ-E1-EL-0206** status **C03**