

Project: W Hotel 'Bank'-building
Location: Amsterdam

OFFICE WINHOV

W HOTEL 'BANK'-BUILDING

PROGRAM: Transformation of a national monument into a five-star hotel and 'creative incubator'
ADDRESS: Spuistraat 172, Amsterdam
PROJECT: 2013-2015/16
GROSS FLOOR AREA: 8.200 m2
CLIENT: Europe Hotels|Private Collection

ARCHITECTURE: Office Winhov, Amsterdam
RESTAURATION: Hoek architectuur & restauratie
INTERIOR DESIGN: Baranowitz + Kronenberg
SUSTAINABILITY: BREEAM Gold
PHOTOGRAPHY: Stefan Müller

Office Winhov: Obiplein 18b, 1094 RB, Amsterdam
Contact person: Uri Gilad
Email: gilad@winhov.nl
Telephone: 020 68 44 44 6

The restoration and transformation for the former Kas Bank building will rejuvenate this national monument converting it into a five-star W hotel. The building, originally designed by F.W.M. Poggenbeek in 1908 was expended in phases until 1932. The building follows the classical typology of bank buildings with vaults on the ground floor and basement, a monumental bank hall on the first floor and offices above. The building is one of the first concrete constructions in the Netherlands and is finished with a sandstone facade.

The new design respects the building monumental character, enhances it and transforms it into a public building. The 'Bank' building will house a spa, a destination bar and luxurious restaurant. Along the Spuistraat it includes a 'creative incubator' for Dutch talent to showcase their fashion, art and design work. The upper floors house 66 guestrooms and suites as extension of the W hotel opposite located in the former Government Office for Transactions and Telephony.

The historical elements of the building, such as the facade, the vaults, the public hall and the staircases are carefully restored. The added components are distinguished by contemporary materials and restrained detailing, making them recognizable but harmonizing with the existing building.



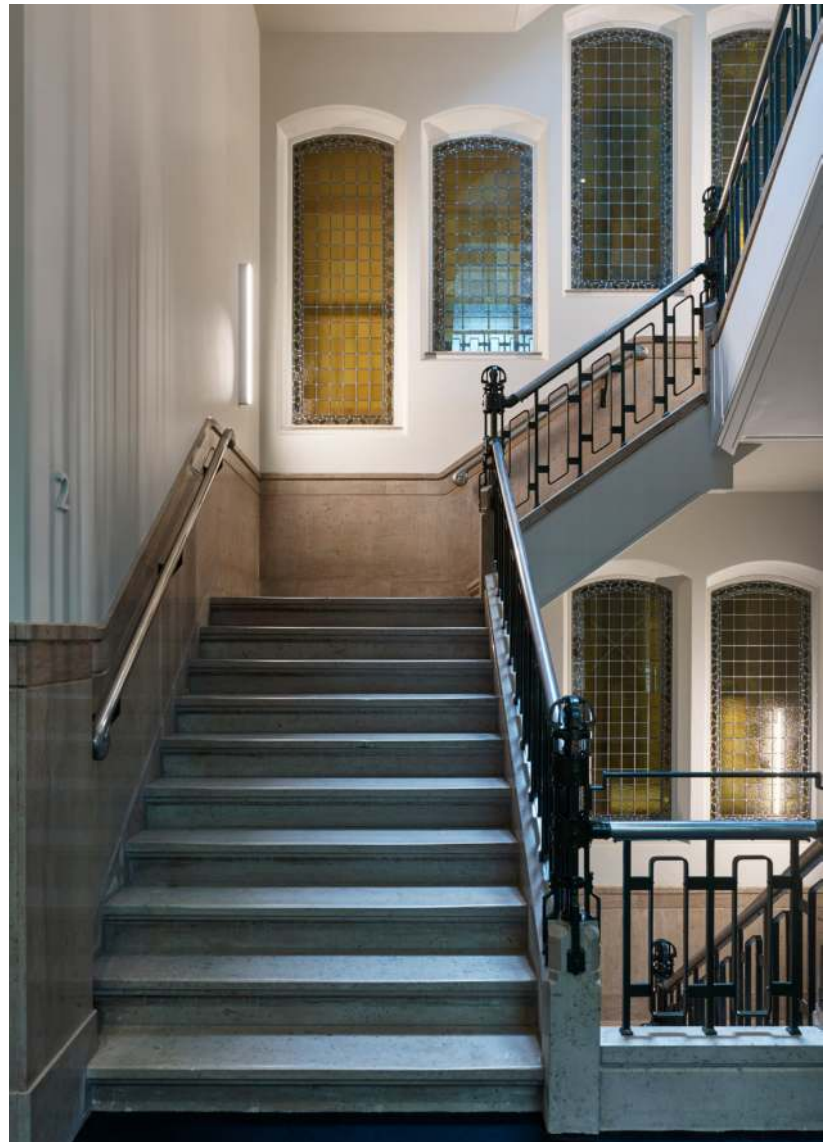
Kasbank before the expansion, 1927

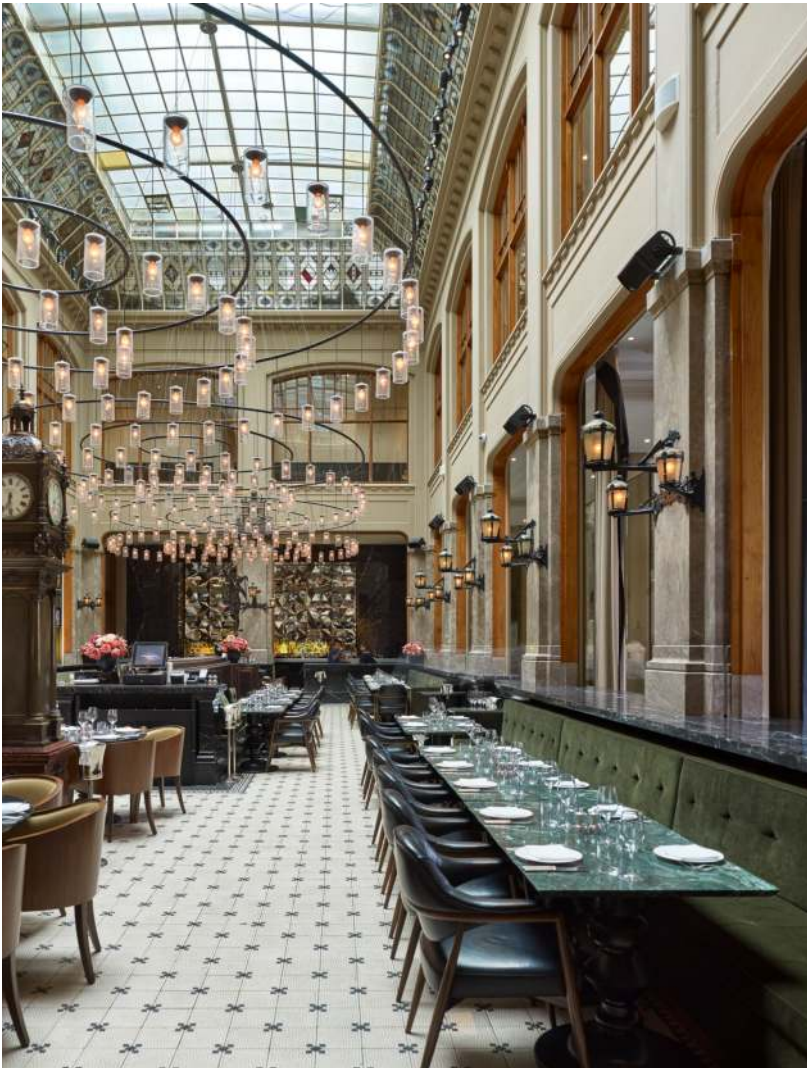


View from the Spuistraat



Entrance of the Xbank

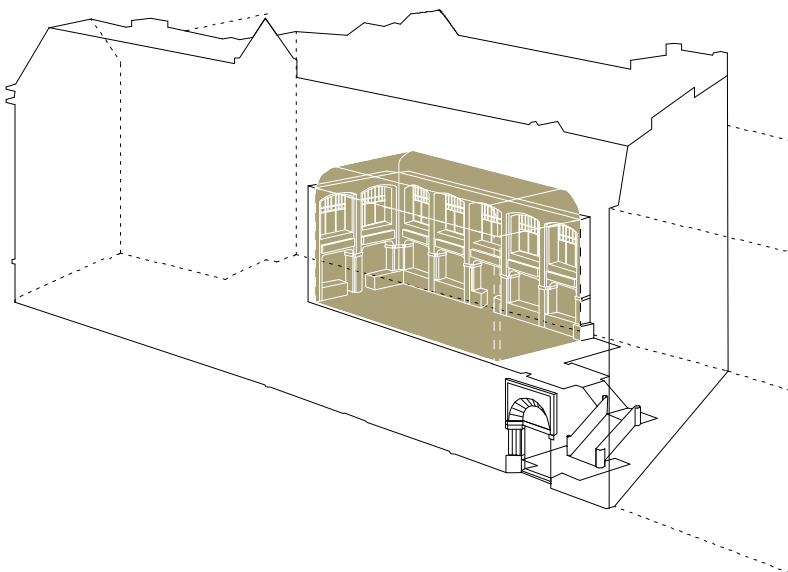




Restaurant The Duchess in the former public hall



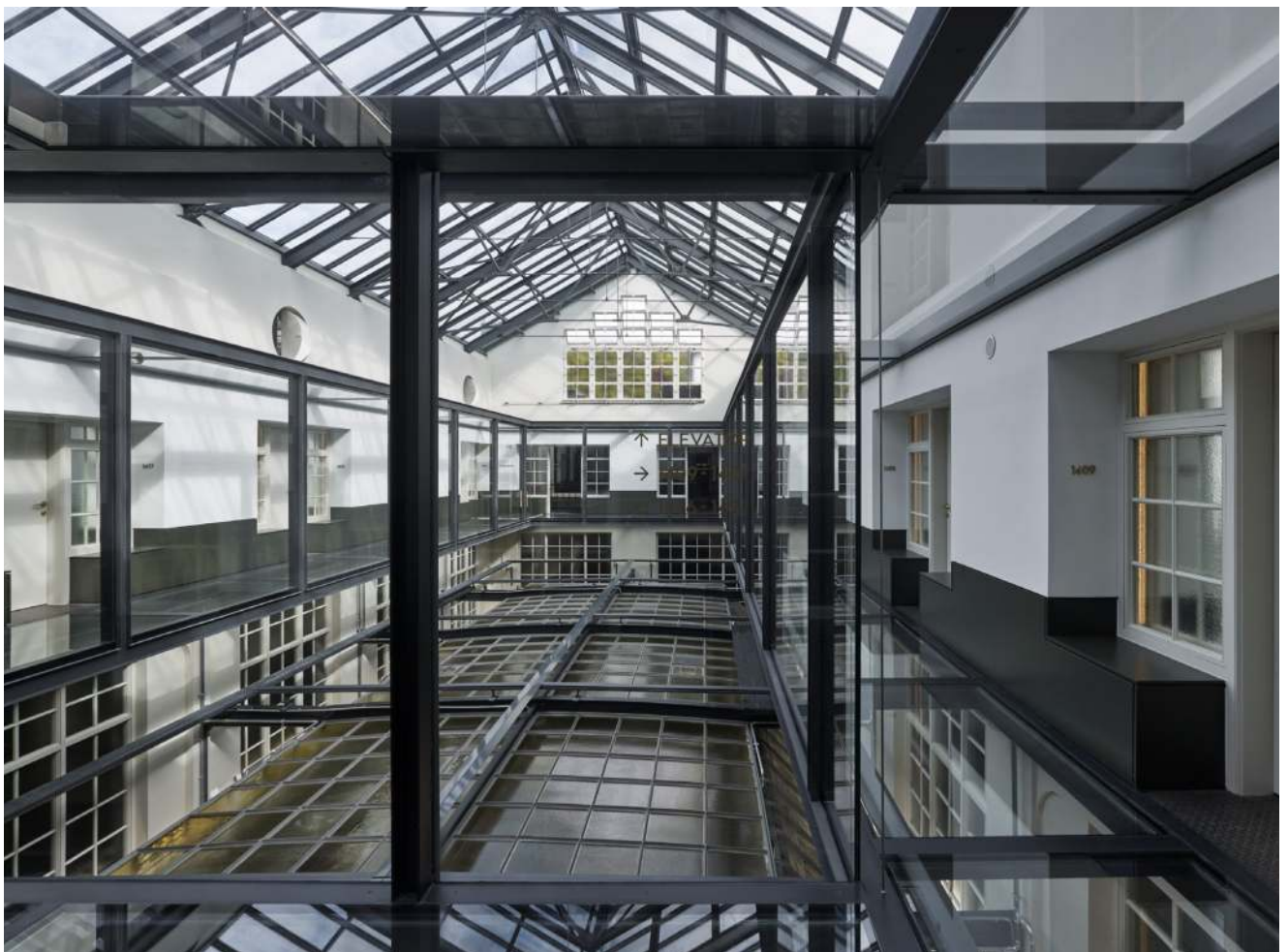
The public hall in the 80's



The public hall in the heart of the building



View towards the glass corridor on the third floor



The glass bridge in the monumental atrium



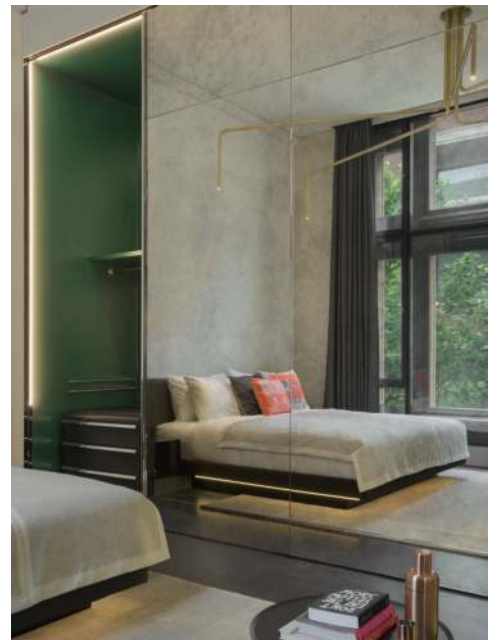
Corridor on the second floor



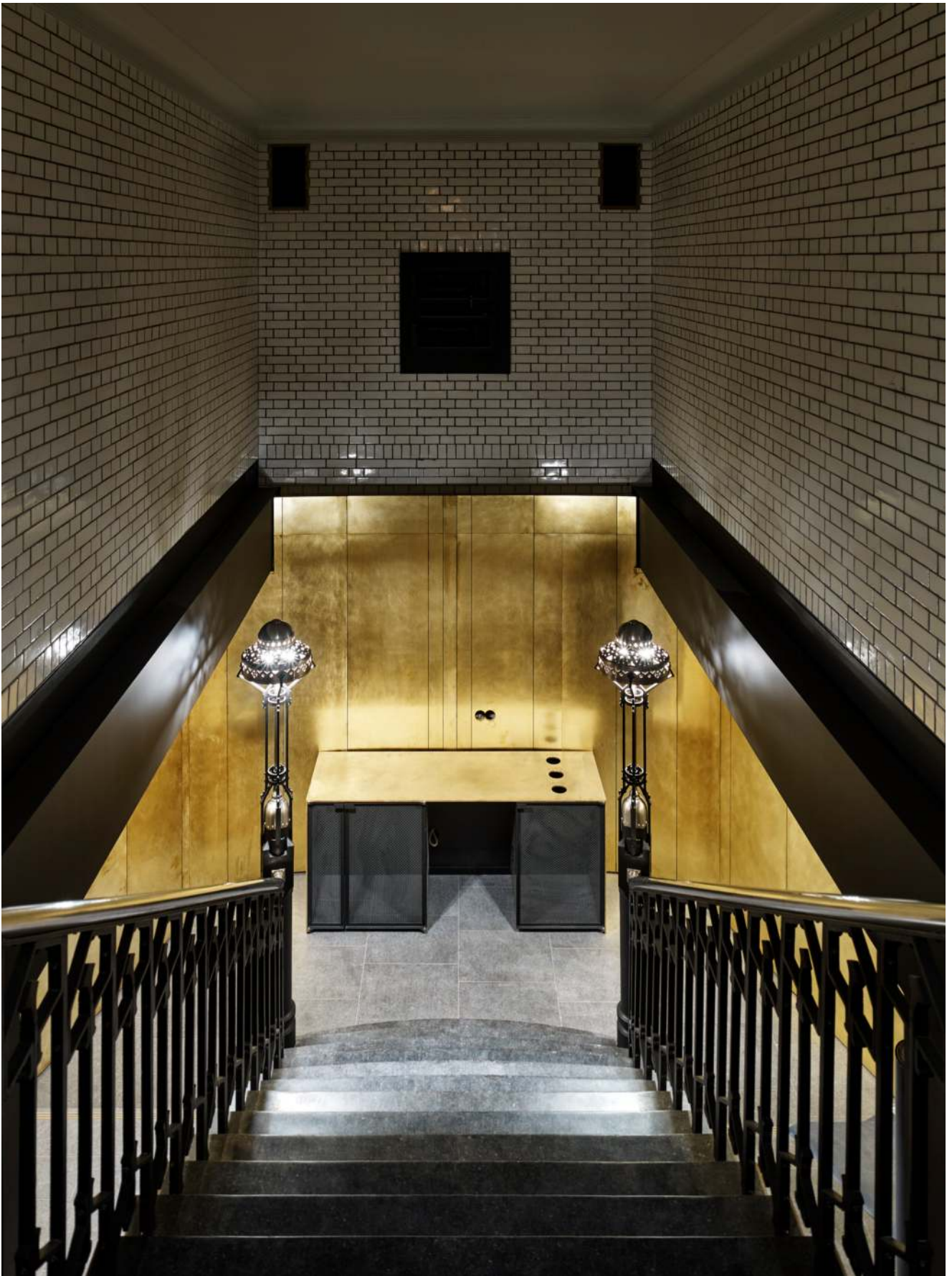
Third floor before the renovation



Adapted staircase railing



Hotel room



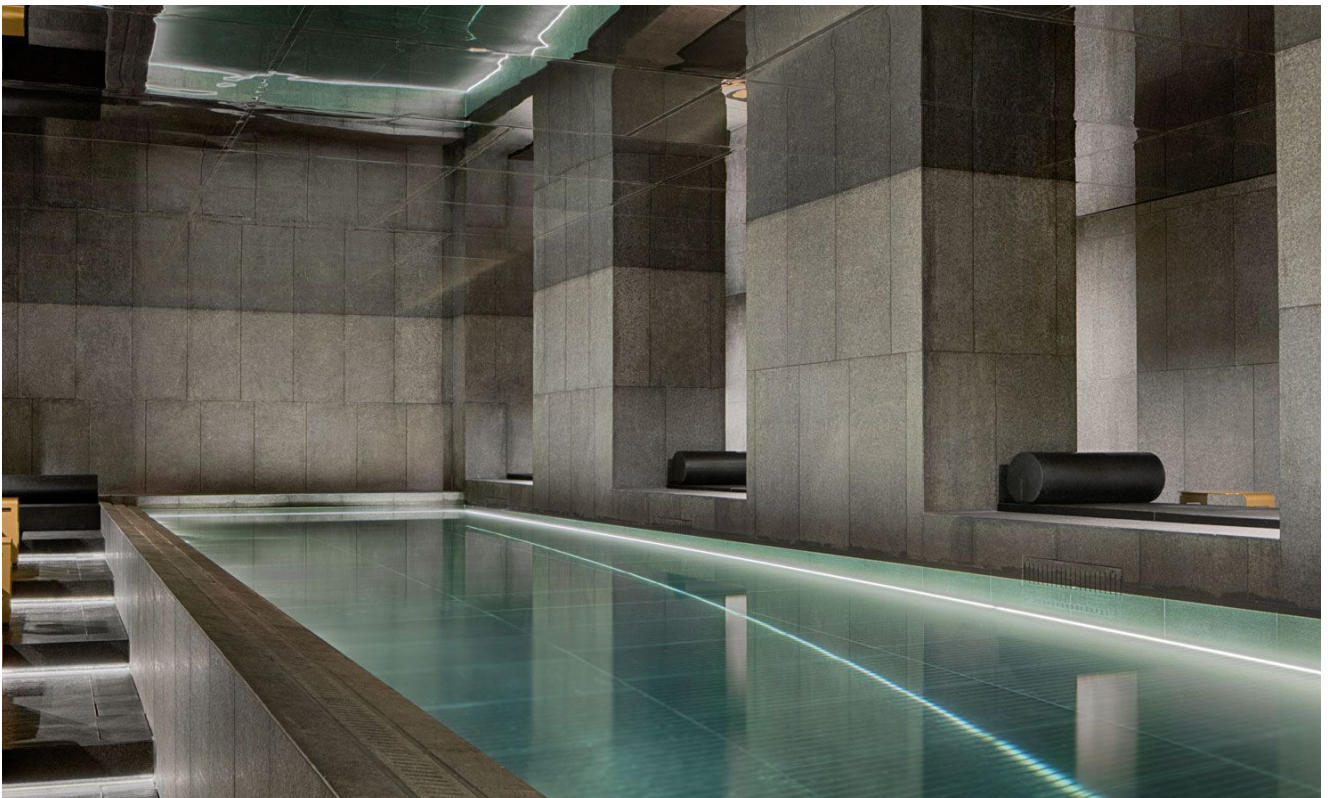
Spa in the monumental vault from 1908



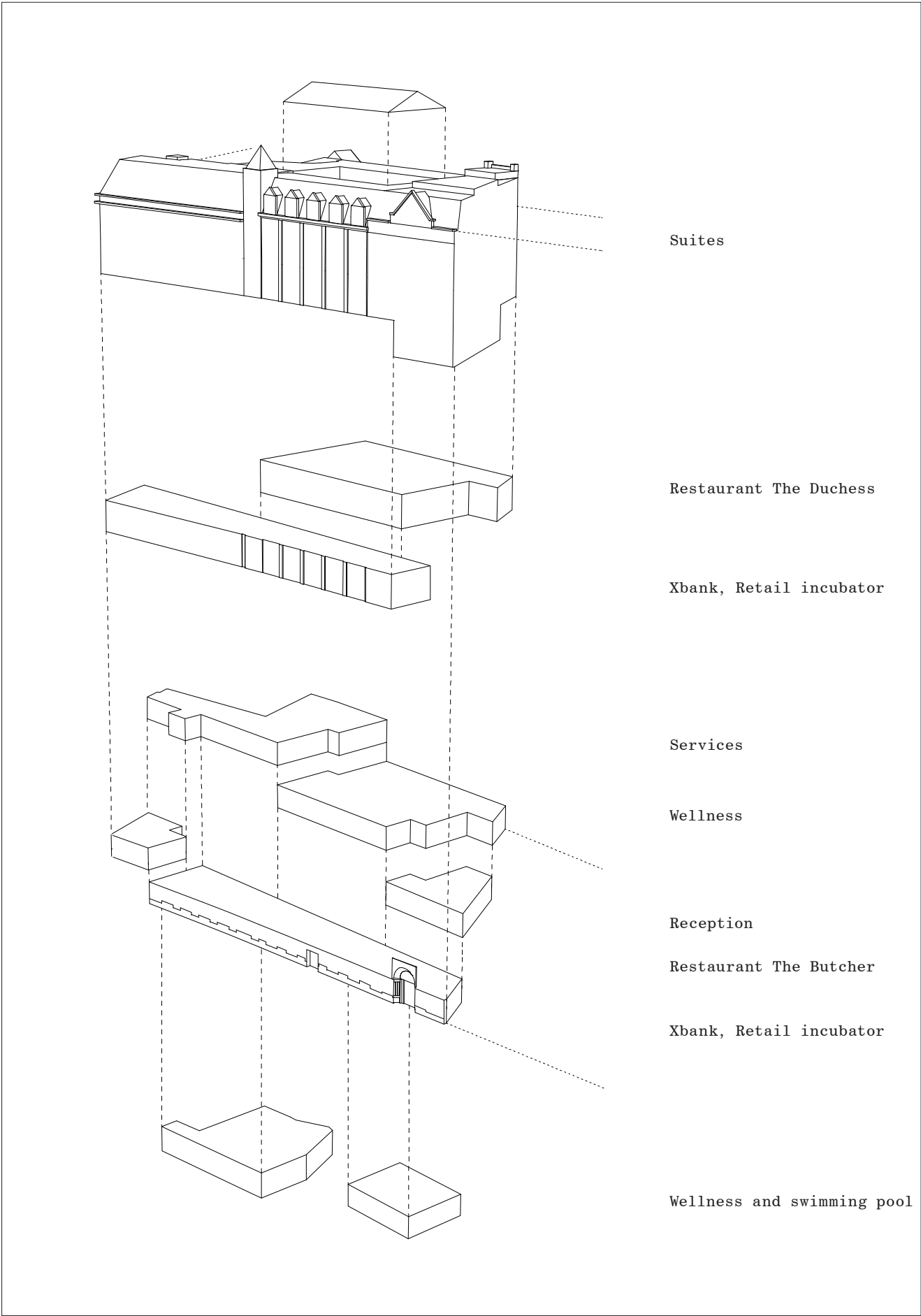
The restored vaults



The vaults in the 70's



Swimming pool in the underground vaults



Suites

Restaurant The Duchess

Xbank, Retail incubator

Services

Wellness

Reception

Restaurant The Butcher

Xbank, Retail incubator

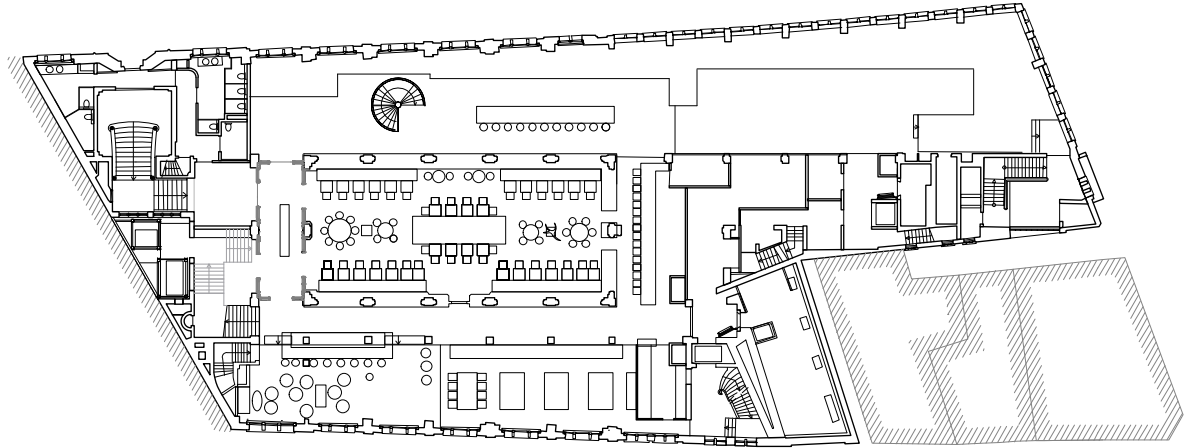
Wellness and swimming pool



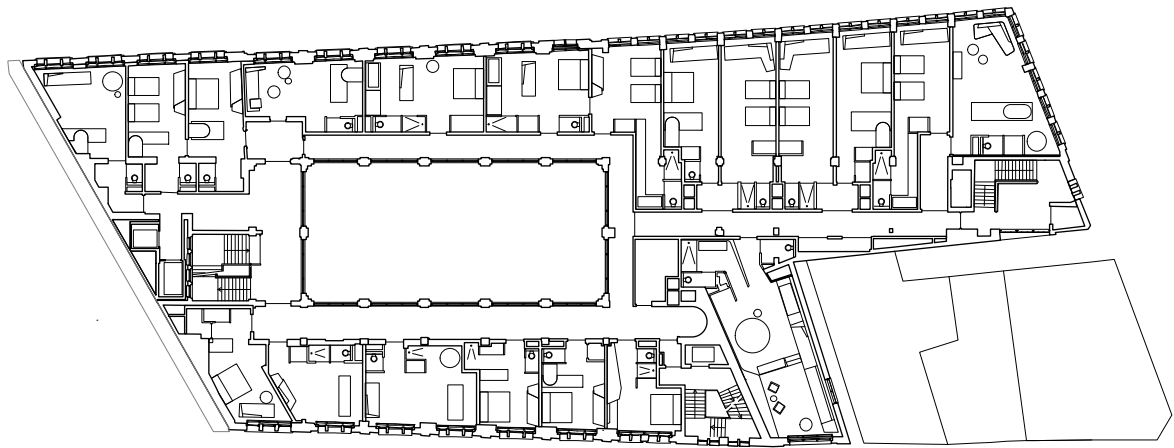
Section of the monumental hall and the atrium



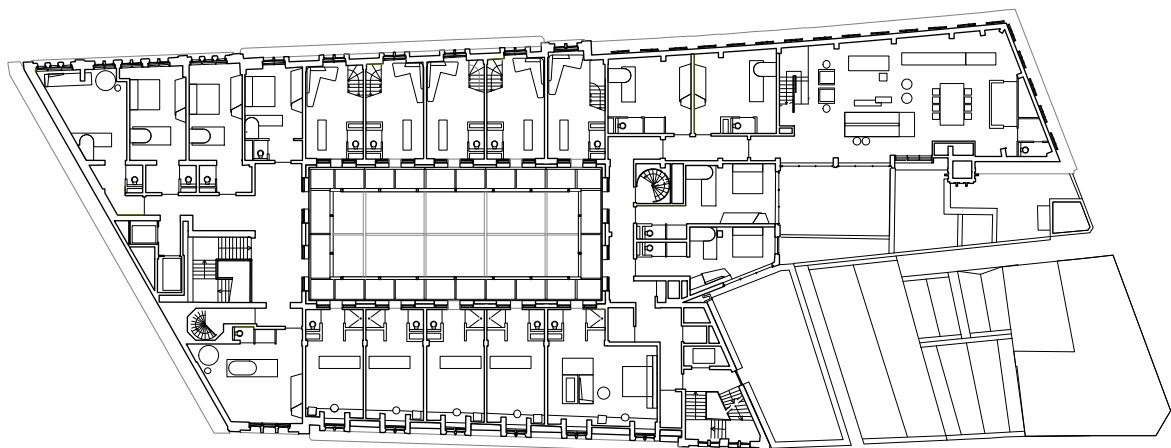
Cross-section with the hall and the vaults in the basement



First floor with restaurant The Duchess and the XBank



Second floor with corridor around the former public hall



Fourth floor with the new glass bridge in the atrium

OFFICE WINHOV AMSTERDAM

PARTNERS: Joost Hovenier, Uri Gilad

Jan Peter Wingender,

ADDRESS: 18b Obiplein, 1094RB Amsterdam

PHONE: +31 (0) 20 6844446

EMAIL: office@winhov.nl

WEBSITE: www.winhov.nl

Office Winhov is an Amsterdam-based architecture and urban-design office, founded by Joost Hovenier (1963-2016), Jan Peter Wingender and Uri Gilad. Operating internationally, the office is engaged in a wide range of projects from housing, mixed-use ensembles to high-end public buildings. Direct personal engagement with our assignments constitutes the basis of our practice. Teaching and a wide range of academic and professional research support its continuing development.

Loving the ordinary

Buildings are more than singular objects; they are part of the urban environment they shape – Like a street, a district, a community. Buildings accommodate the people who use them intensively. Today, tomorrow, every day - and every year. That is why we need buildings that stand the test of time. Buildings that stay relevant thanks to their solidity, usability and durability. In that way, they are embedded in our complex, ever changing urban environment. Trends may come and go, but we love the long lasting power of the ordinary. The everyday is here to stay.

We combine simplicity with sophistication

Our team strongly believes in the elegance of simple solutions to complex problems, without over-seeing the context in which we operate. Our thinking and designs always incorporate the environmental, social and cultural dimensions that are related to architecture and city planning. Our interest in longevity and connectivity of buildings asks for a process of careful observation, adjustment and refinement. The combination of reduction and simplicity on the one hand and enrichment and sophistication on the other hand lends additional meaning to our buildings.

The ordinary has no boundaries

Office Winhov started in The Netherlands, working in the tradition of the European city. We built a reputation with designs that are characterized by a careful understanding of the context and an interest in strong formal and material presence. We always aim for robust buildings that become an inextricable part of their environment and answer the varying demands of owners and users. That's how we as Office Winhov transcend our earlier boundaries. Making use of our background and experience we expand our firm's activities. Today we design a wide range of projects, and we operate internationally. The ordinary is anything but static and placing it at the centre has brought us, and the people we commit to, further than any trend or vogue.