



www.panoramahk.com

HONG KONG | SHENZHEN | CHENGDU | SHANGHAI | SINGAPORE | KUALA LUMPUR

Company Profile

Established in 2003, PANORAMA Design Group has been focusing on planning and designing large-scale composite spaces including Hotel, F&B, Entertainment, Retail, Villa and Show flat. PANORAMA's planning and design team offers a blend of creative and marketing skills brought together to produce unique and lasting quality design solutions. These solutions consider location based importance, target markets, trends, budget requirements and operations for every size and type. Each environment is assured of a dynamic, vibrant and unique character in its own right.

The company provides consultancy services in Interior Architecture & Branding Solution and receives over 150 international awards including Germany's iF Design Awards, Red Dot Design Award Winner, US's IIDA Global Excellence Awards & IDA Design Awards, Japan's JCD Design Awards Best 100, Taiwan's TID Design Award, UK's FX Design Awards, Restaurant & Bar Design Awards Finalist, Singapore's SIDS Design Award & INSIDE Awards Finalist , Netherland's Great Indoors Awards Nominee, China's Most Successful Design Awards, The Ring - iC@ward International Interior Design, Hong Kong's Asia Pacific Interior Design Awards, Hong Kong Designers Association Global Design Awards, Perspective Design Recognition Awards and Design for Asia Awards. Projects have been featured in numerous international design magazines & journals, e.g. Netherland's FRAME, Japan's World Hyper Interiors, Singapore's d+a, Korea's Interior World & bob, Taiwan's Interior & CONDE.

Our headquarter locates in Hong Kong with local offices in Shenzhen, Chengdu ,Shanghai, Singapore, Kuala Lumpur.

Horace Pan

- Vice Chairman, Hong Kong Interior Design Association
- 2011-14 Executive Board Member, International Federation of Interior Architects/Designers (IFI)



Founder

Horace Pan, a Hong Kong design figure famous for creating story-telling and unique spatial experiences of various commercial interior disciplines, obtained his Bachelor of Arts degree in Interior Design and Master of Arts degree in Design from School of Design, The Hong Kong Polytechnic University. He established his award-winning design practice PANORAMA Design Group in 2003. With headquarter in Hong Kong and local offices in China, Singapore, Malaysia & Indonesia, the company's project categories include Hotel, Property Development, Clubhouse, F&B, Retail, Education and receives over 150 international awards. Pan is frequently invited to be the guest speaker of international design conferences and seminars. He now furthers his professional career in the field of design education and is the assistant professor at School of Design, the Hong Kong Polytechnic University and serving as the Vice Chairman of the Hong Kong Interior Design Association and 2011-14 Executive Board Member of the International Federation of Interior Architects/Designers (IFI). Pan received Hong Kong Ten Outstanding Designers Award and China Entrepreneur Award in 2008 & 2010 respectively, 2015-16 Designer of the Year in China. Pan was the only Chinese among the 10 invited international designers in 2011 Taiwan International Interior Design Exhibition. In 2014 Pan received Hong Kong & Shenzhen Outstanding Achievement Designer Award in recognition of his contribution to the interior industry development over the past decade. In 2016, 2017 & 2019 Pan was respectively invited as international judge for Hong Kong's APIDA Award, Japan's JCD Award and Malaysia's JIDA Design Award.

Project Synopsis :

Project Name : MeeHotel

Location : Shenzhen, China

Client : PuroMe Hotel

Interior Design : PANORAMA Design Group

Design Director : Horace Pan

Design Team : Wendy Lam, Szeka Yung, Candace Pun, Ming Cai

Photographer : GD Media, POPO VISION

Completion Date : Jan 2020

Area : 6200 sqm

Media Enquires

Becca Sung

Telephone : (852) 2317 7850

Email : info@panoramahk.com

MeeHotel is a new urban resort hotel in the city of Shenzhen, China aims to give business travelers a peaceful state. The project location is called “Bamboo Forest”, so we naturally generate our story from this name.

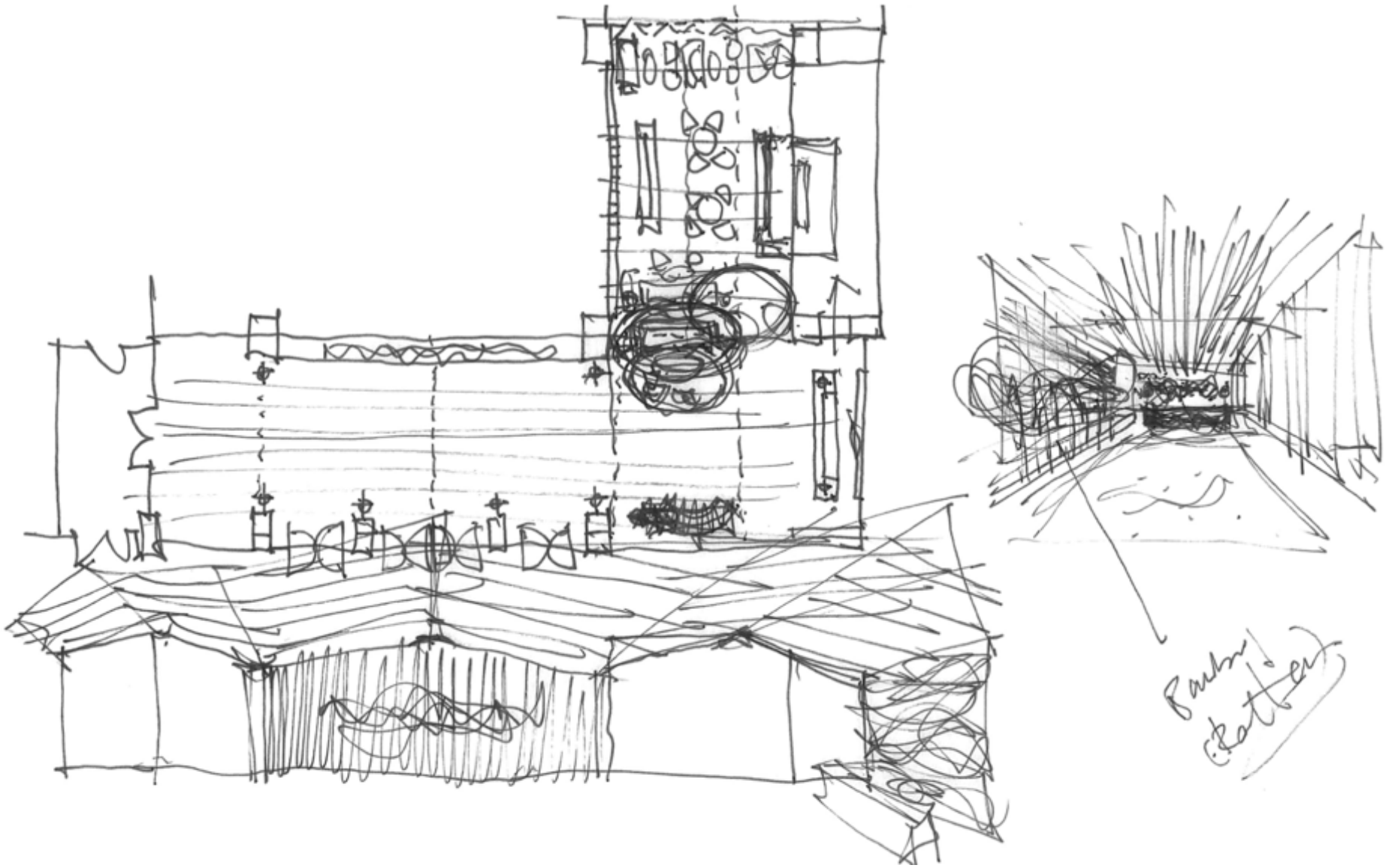
Starting from the lobby space, bamboo was selected as the key material to let customers enter the lobby space and greeted by sophisticated light and shadow effect on the main wall. Various on-site tests & experiments with traditional bamboo weaver were done to create full height screens to define reception and lobby lounge area. Pitched roof ceiling and natural diatom mud finished walls overlay by articulated light and shadow effects provide a minimal and leisure experience for the entire space.

Double height central courtyards were introduced in every two guest-room floors. A reflective lake with bamboo installation of dancing curves that falls naturally, as if clouds are floating in the air. This ceiling hung structure was again in consultation with the master of the bamboo weaving on how to create the curves by making use of its natural elasticity and traditional connection method. Guests will feel like passing through an abstract bamboo forest before arriving at their rooms.

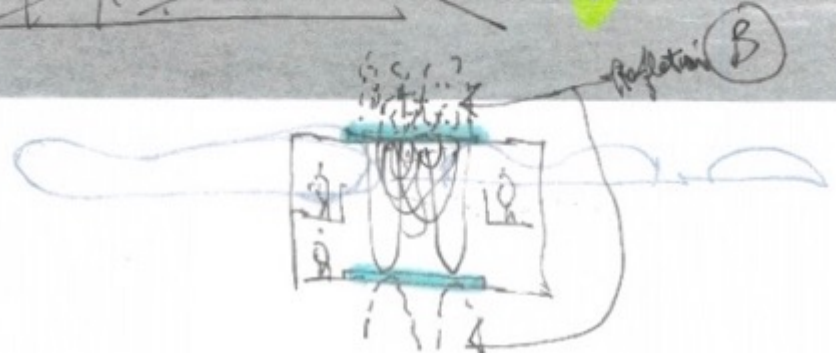
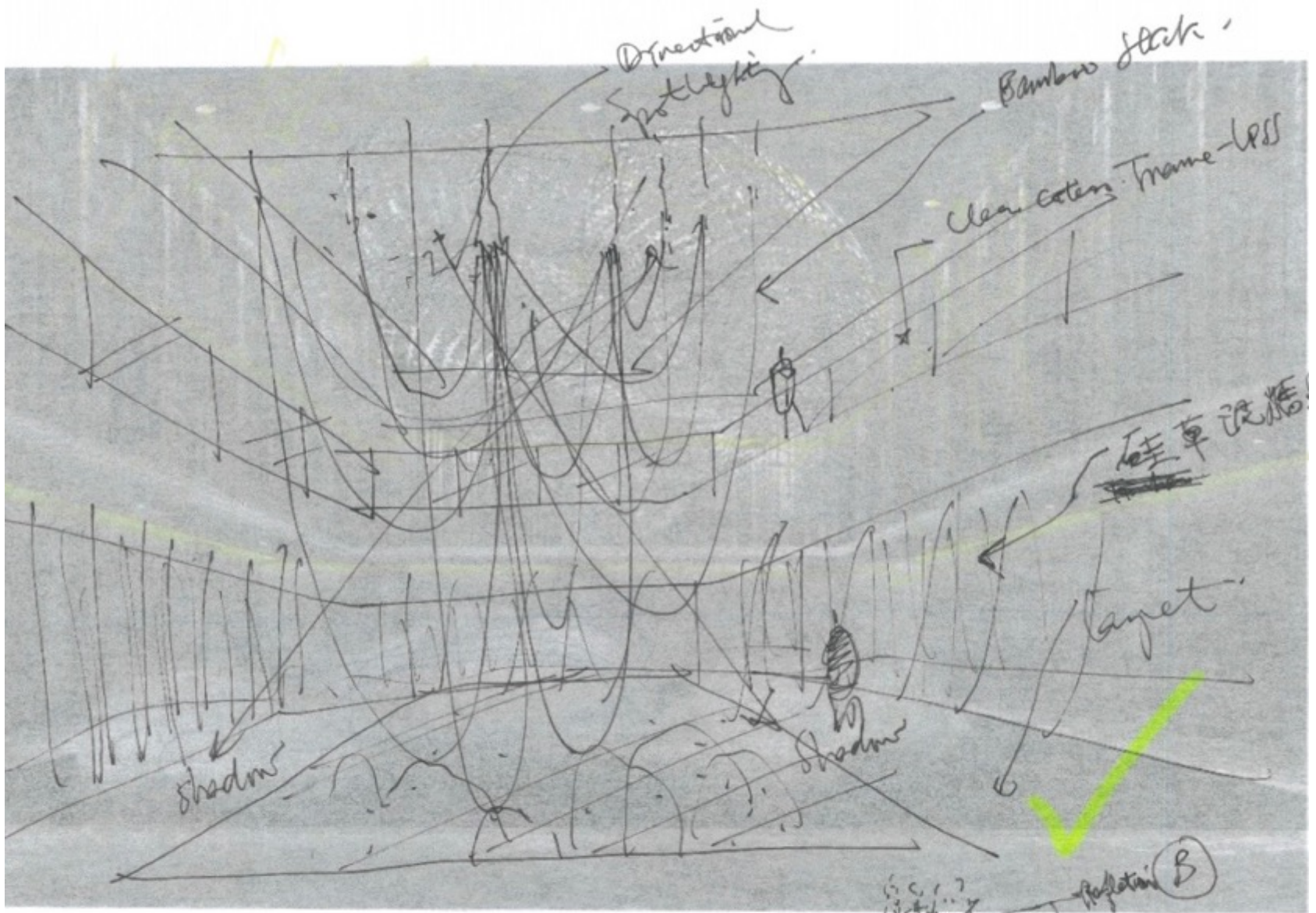
On the top floor Sky Café, a zen and church-like space were constructed by full height bamboo structure. Skylight above allows natural light fall in the middle of the seating area during daytime. Ceiling suspended circular LED lights formed endless glowing moons and provides guests a poetic experience during nighttime.

The bamboo and rattan applied in all guestroom headboards are in the same pattern as those in the lobby but with different widths and thickness. Floated by concealed lights, it aims to provide guests a peaceful environment and an elegant atmosphere.

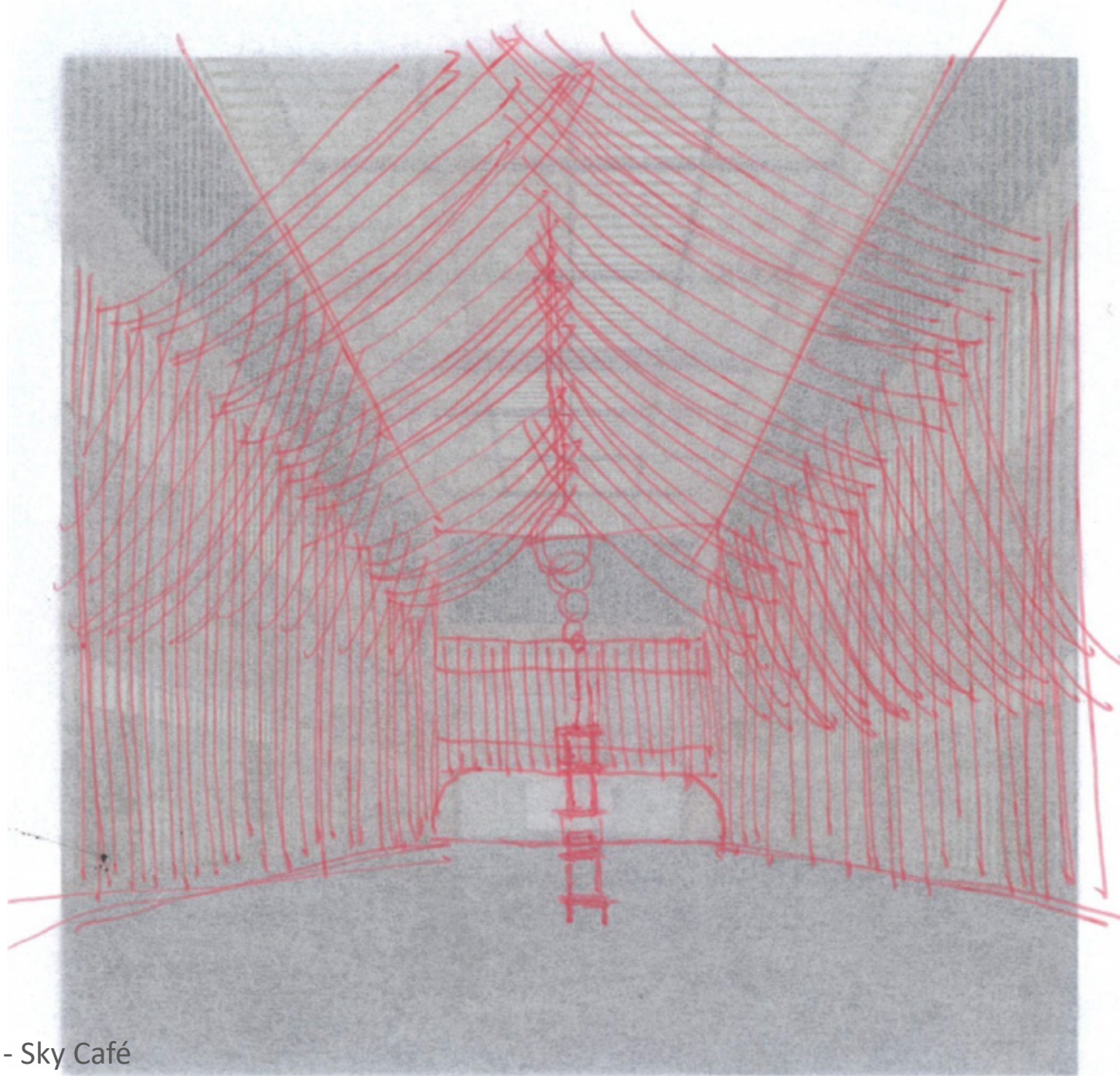
We hope that this is not just another boutique hotel project, by adding the layer of traditional culture, this hotel space can provide a relaxing and comfortable journey in a more meaningful way. In celebration of the unique quality of bamboo, from the architectural to the interior level, we can continue to promote and allow business travellers to appreciate the beauty of traditional handicraft that we should have ignored. It can ultimately form aesthetic, functional, and cultural enhancement in our busy urban life.



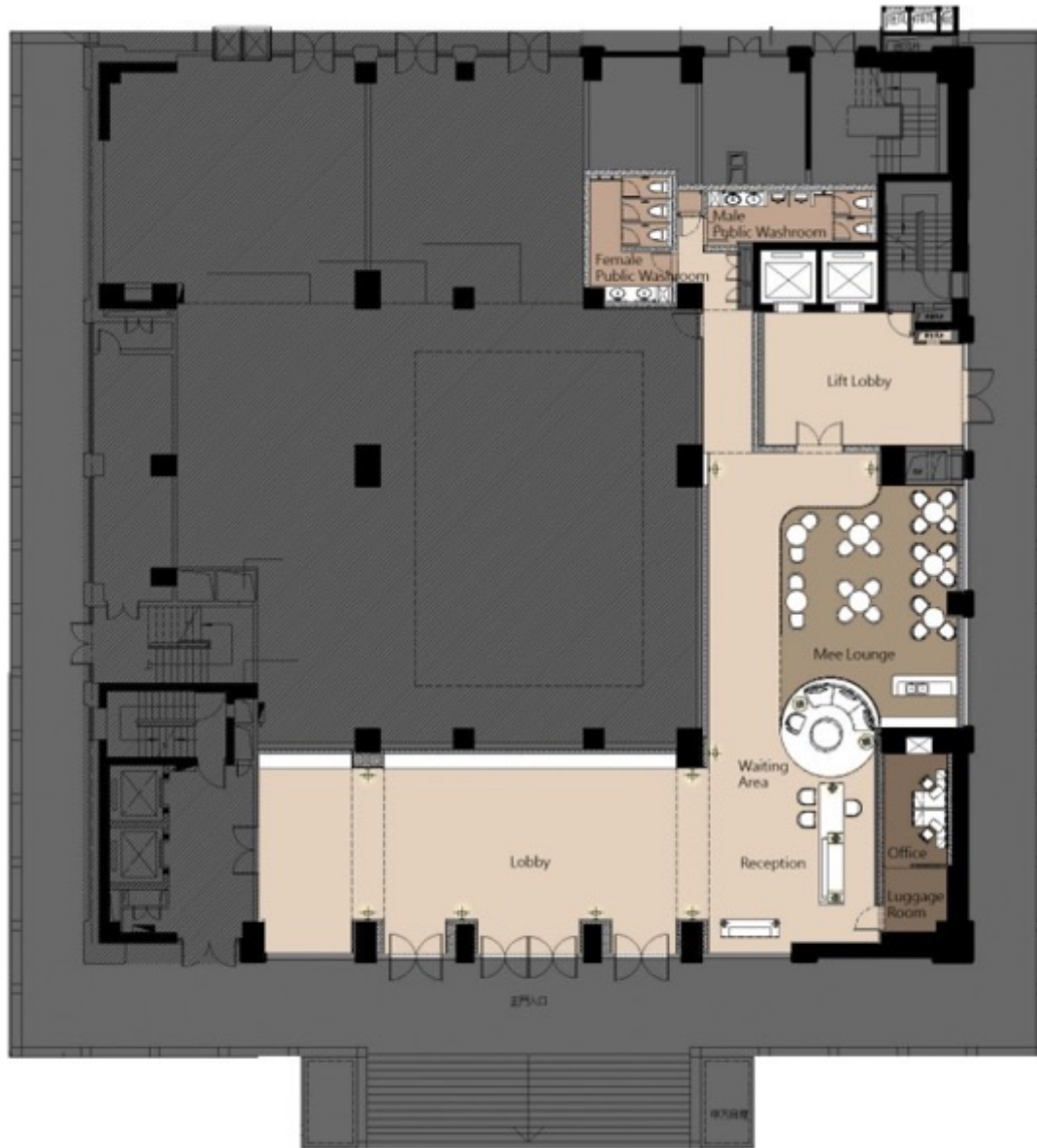
Bar area
(kitchen)



Design Draft - Guest room Courtyard
PANORAMA Design Group



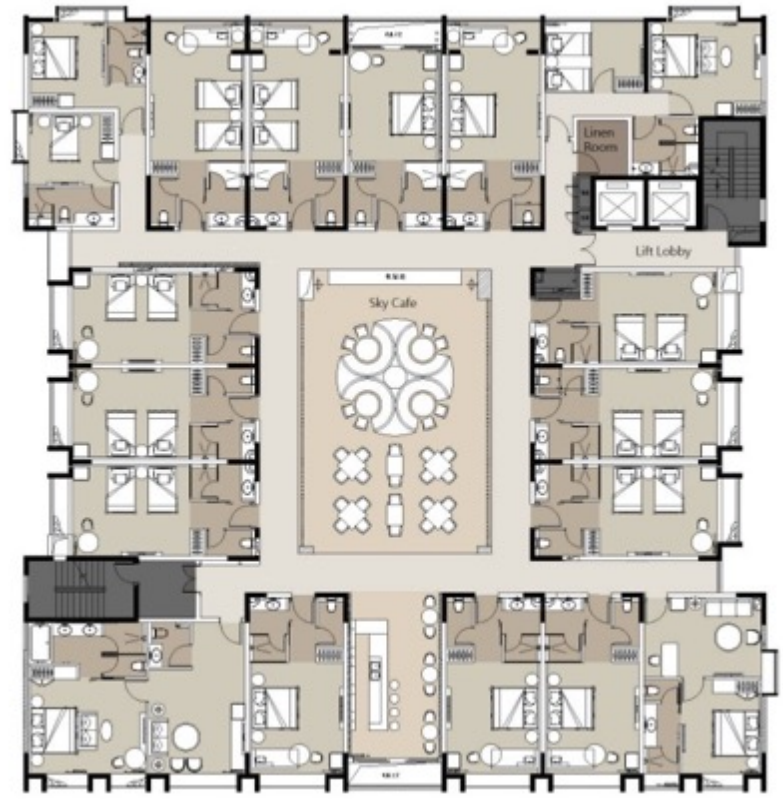
Design Draft - Sky Café
PANORAMA Design Group



Ground floor - Lobby



11/12 Floor (Guest room; Courtyard)



21/22 Floor (Sky Café; Guest room)



Lobby

PANORAMA Design Group



Lobby

PANORAMA Design Group



Lobby

PANORAMA Design Group



Lobby

PANORAMA Design Group



Lobby

PANORAMA Design Group



Lobby
PANORAMA Design Group



Lift Lobby
PANORAMA Design Group



Public Washroom
PANORAMA Design Group



Typical corridor



Courtyard
PANORAMA Design Group



Courtyard
PANORAMA Design Group



Sky Café

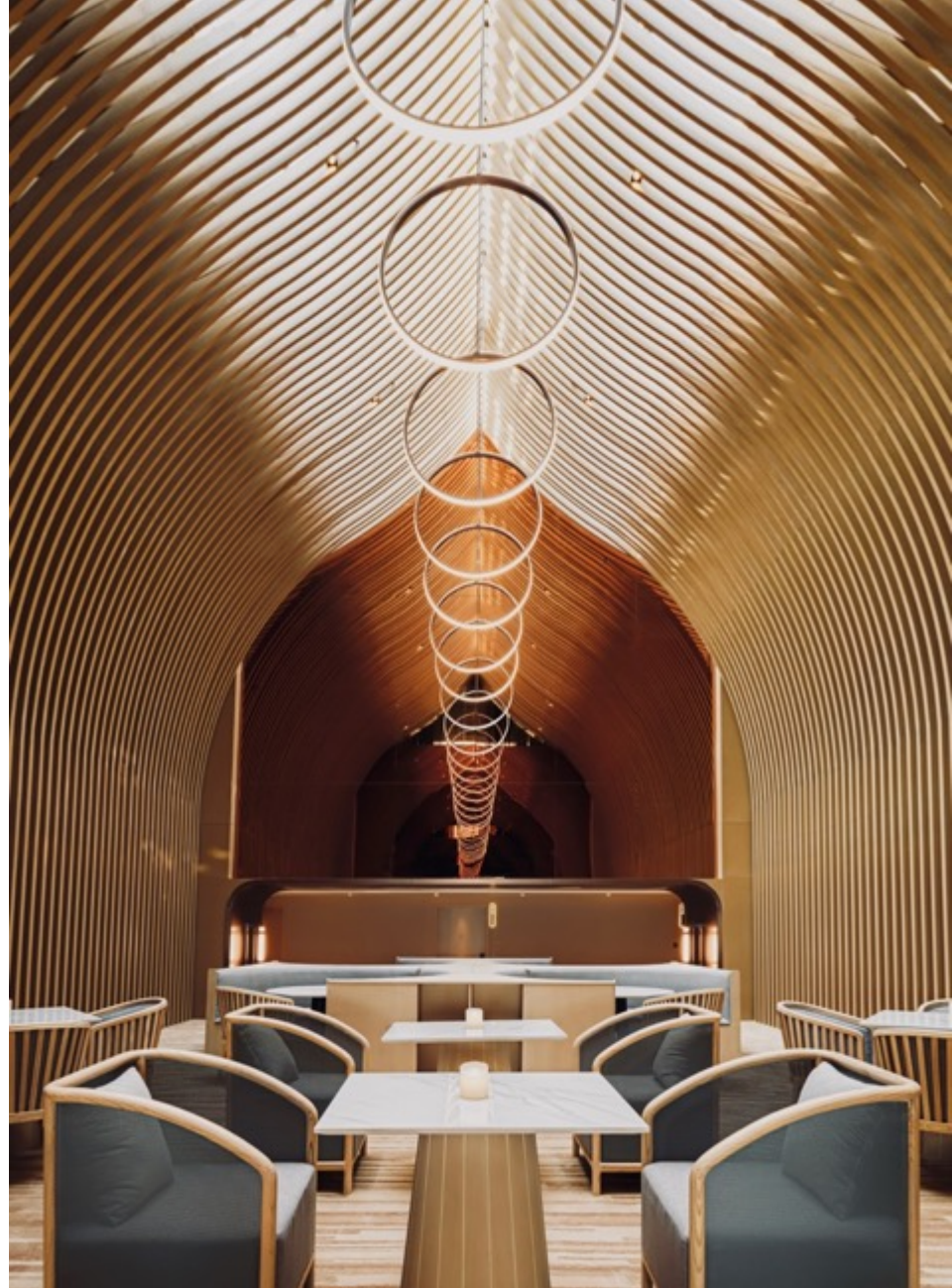
PANORAMA Design Group



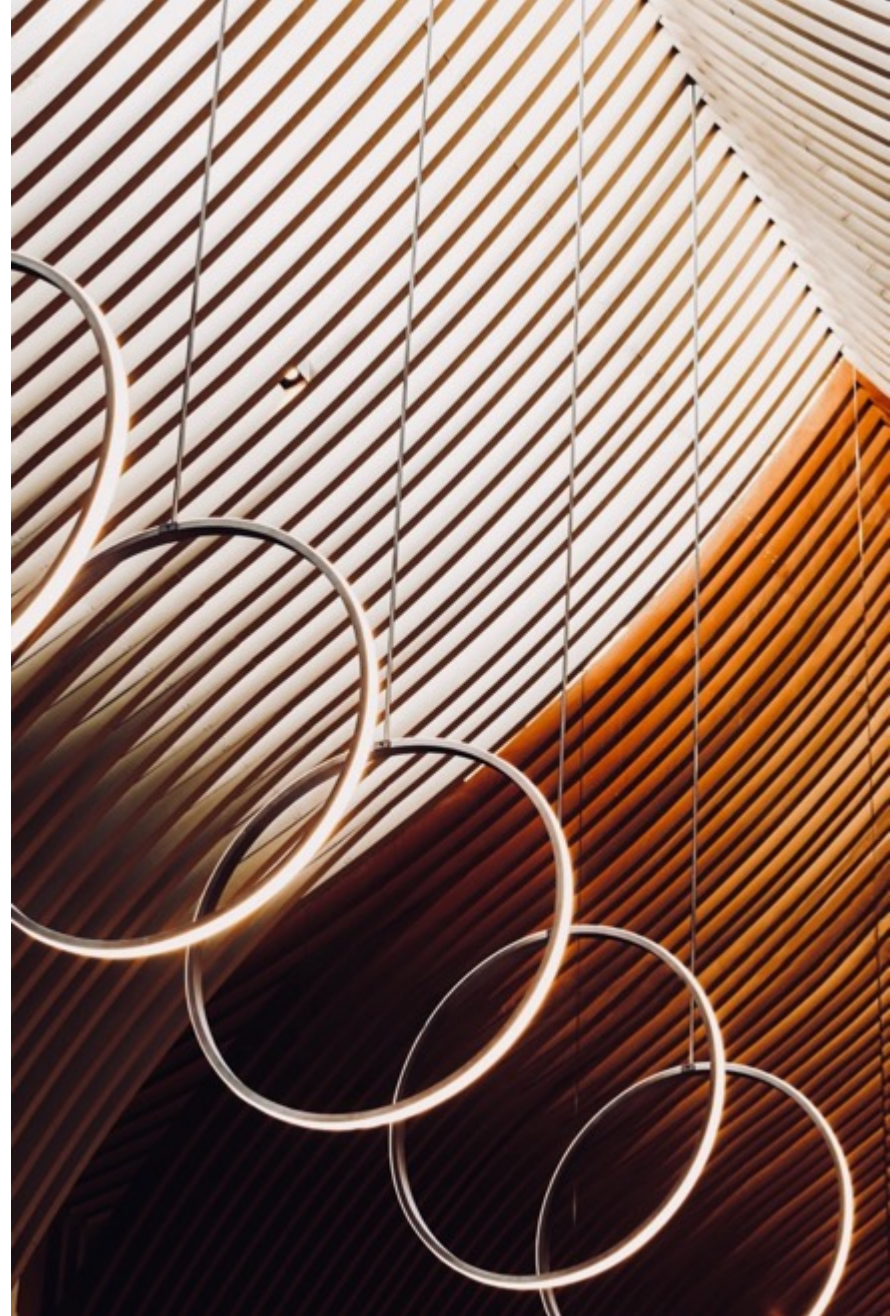
Sky Café
PANORAMA Design Group



Sky Café
PANORAMA Design Group



Sky Café
PANORAMA Design Group



Sky Café
PANORAMA Design Group



Sky Café
PANORAMA Design Group



Guest Room
PANORAMA Design Group



Guest Room

PANORAMA Design Group



Guest Room

PANORAMA Design Group



Guest Room
PANORAMA Design Group



Detail

PANORAMA Design Group

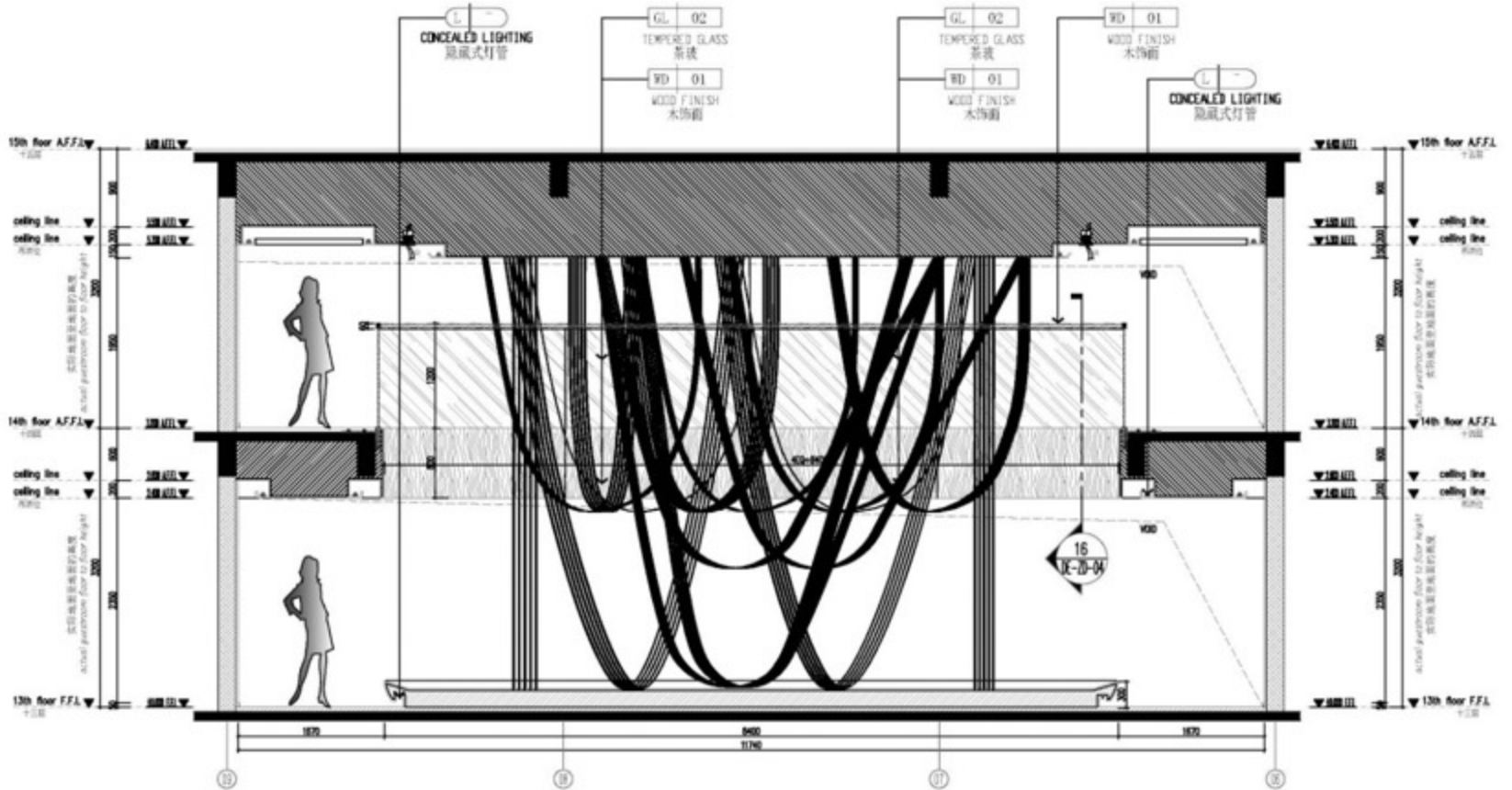


Detail

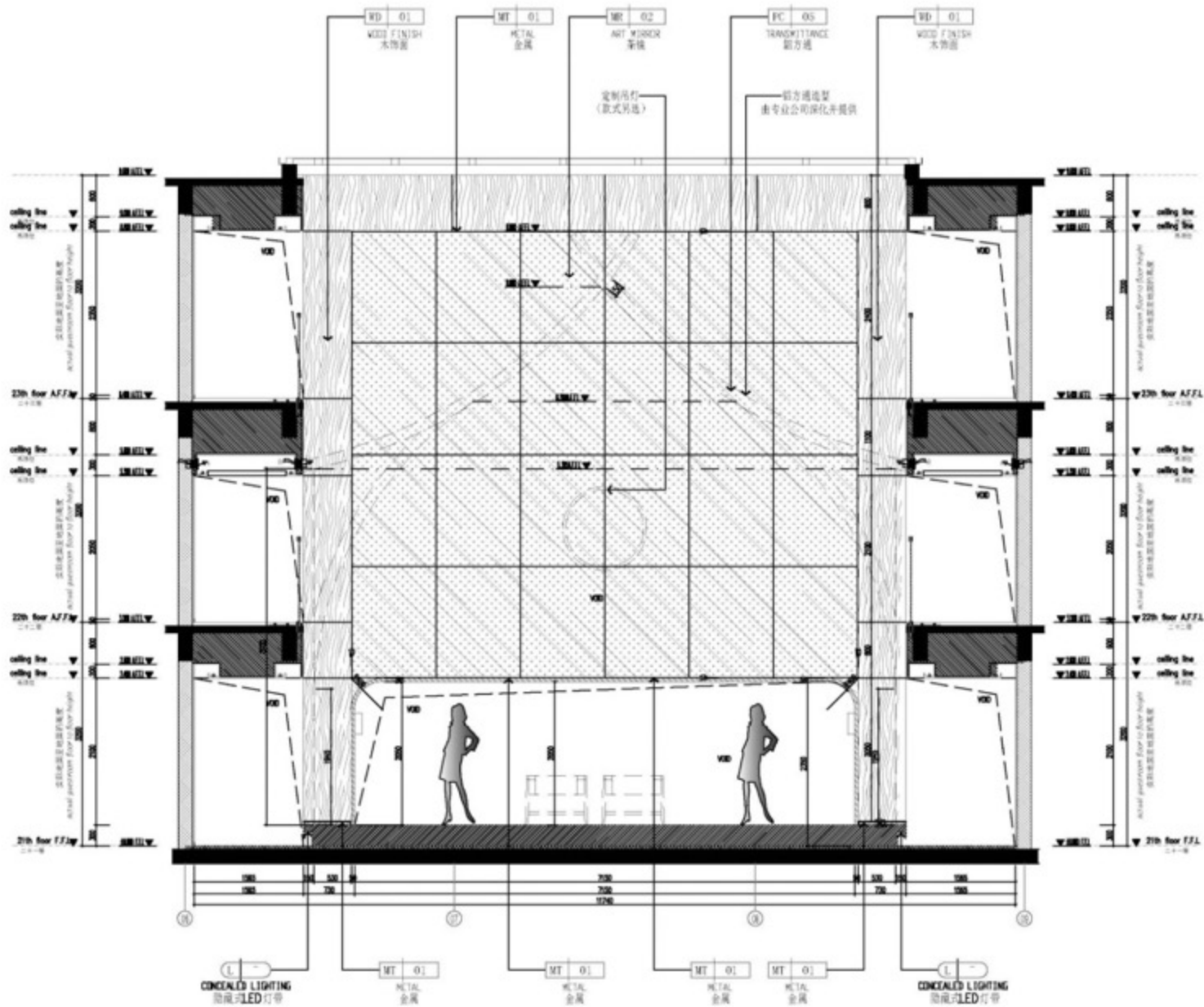
PANORAMA Design Group



Detail
PANORAMA Design Group



Section - Guest room Courtyard
 PANORAMA Design Group



Section - Sky Café
 PANORAMA Design Group