



01_lobby view_大堂视角

2016年，我们受邀设计位于BMW中国区总部驻地的CupOne佳成广场店。项目临近北京的使馆区，CupOne咖啡馆包括大堂的一部分、室外平台，以及连接两部分的室内区域。结合这里的特点，我们选择“山水”的形态完成这个设计邀约。

In 2016, we were invited to design CUPONE, a coffee shop located at the headquarters of BMW China, by the lobby of Gateway Plaza, a commercial development near Beijing's embassy district. CUPONE Café extends from an angle of the building's lobby towards an outdoor terrace, with an indoor area connecting both sections. To integrate these features into a homogeneous design, we selected a "Mountains and Rivers" theme for the project.



02_lobby view_大堂视角

大堂视觉中心

步入佳程广场正门，扶梯直升二层，稍显空旷冷清的大堂很难让人停下来，而一个咖啡厅真正的魅力是来自于其形形色色的客人。为此，我们决定为这个大堂设立一个艺术品般的视觉中心，让临时脱离单调办公工作环境的客人可以安心地坐下来享受一杯咖啡的时间。

The Lobby as a Visual Center

When visitors enter through the Plaza's main access door and take the escalator to the second floor, the view offered by the quiet and rather empty lobby is hardly attractive. On the other hand, the real charm of a café comes from the atmosphere created by the diversity of its clientele. For this reason, we decided to design a lobby with an artistic visual center, one that allows visitors to forget about monotonous work environments, and provides room to sit back and relax while enjoying a cup of coffee.



03_lobby view_大堂视角

“山”可以增加空旷大堂的私密感，客流即是“水”，犹如溪水般淌过山，在视觉和心理上增强了大堂开放区域及室外部分的连续性。经过无数次的尝试，我们选择了近300片尺寸不一的叶片。

“Mountains” deliver a cozy feeling of privacy to the open lobby, while the coming and going of visitors becomes “rivers” extending into the distance, just like gentle streams of water flowing through the mountains. Such a visual and psychological enhancement creates a sense of continuity between the open area of the lobby and the outdoor terrace. To this end, after countless attempts, we selected nearly 300 vertical “leaves” .



04_lobby view_大堂视角

外面呈香槟色镜面电镀用于反射，形成立体的动态滤镜，每个叶片上的颜色和图像都会随着客人和路人举动、姿态、衣着颜色不停地改变。这些尺寸不一的叶片最高处达到2.4米，层峦的“山”为客人带来相对封闭且自由的空间体验。

Their champagne plated exterior provides reflection, forming a three-dimensional dynamic filter. Thus, color and patterns on each leaf change continuously with every move, posture and variation on the clothing of both visitors and passers-by. These leaves of different sizes are planted from the floor up to a height of 2.4 meters. Together, they create a range of mountains that provides visitors with a feeling of relative privacy and freedom of space.



05_lobby view_大堂视角

叶片内侧做了不同色度的灰色烤漆处理和紫色座椅一同减弱周围人来人往对内部的打扰，让客人可以更安静的与朋友相处，或享受一个人的独处时光。

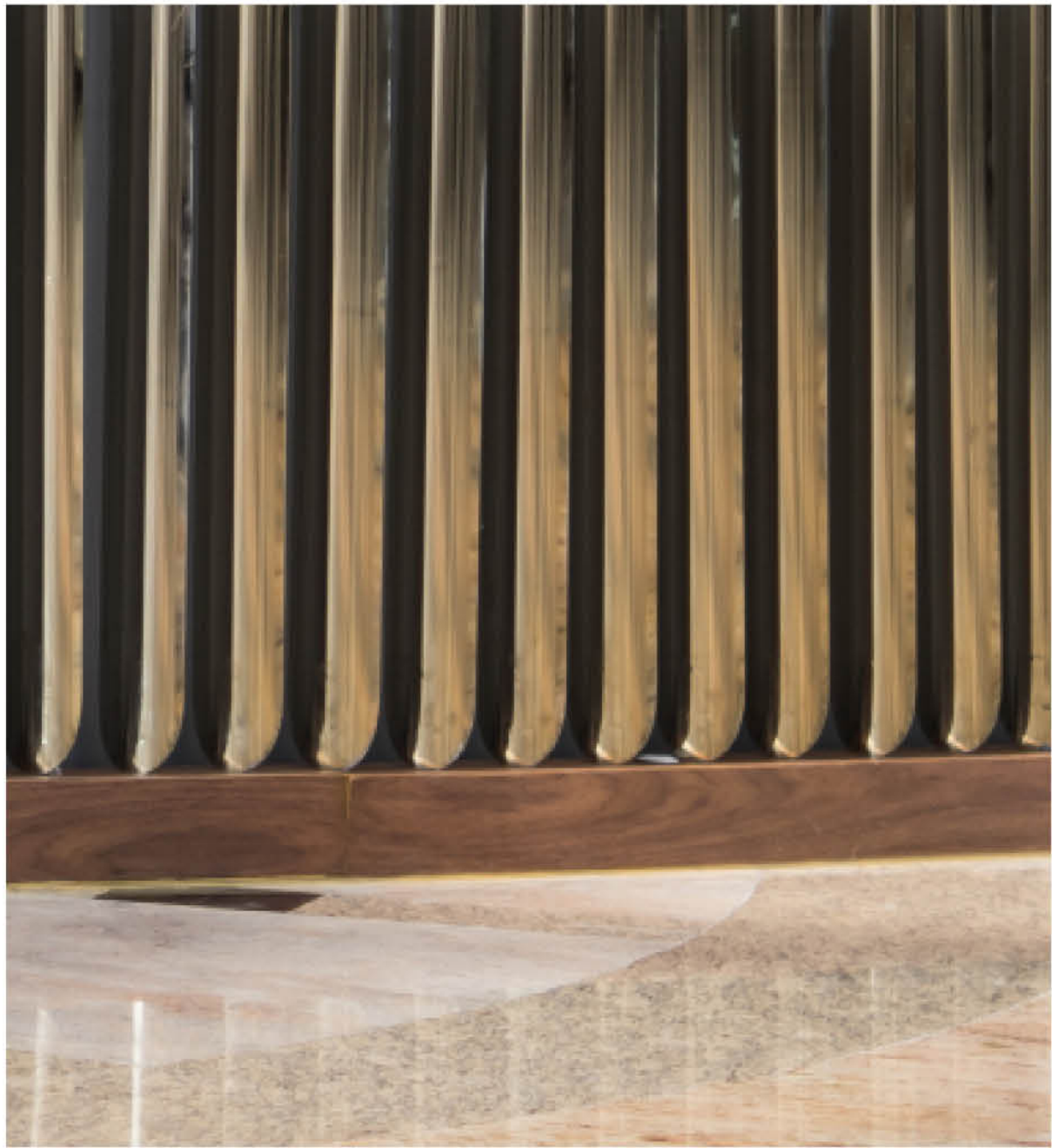
Different shades of grey varnish were applied to the inner surface of the leaves. Side by side with multiple sets of purple seats, these symbolic elements reduce the influence of external disturbances, allowing guests to enjoy quality time on their own or with friends.



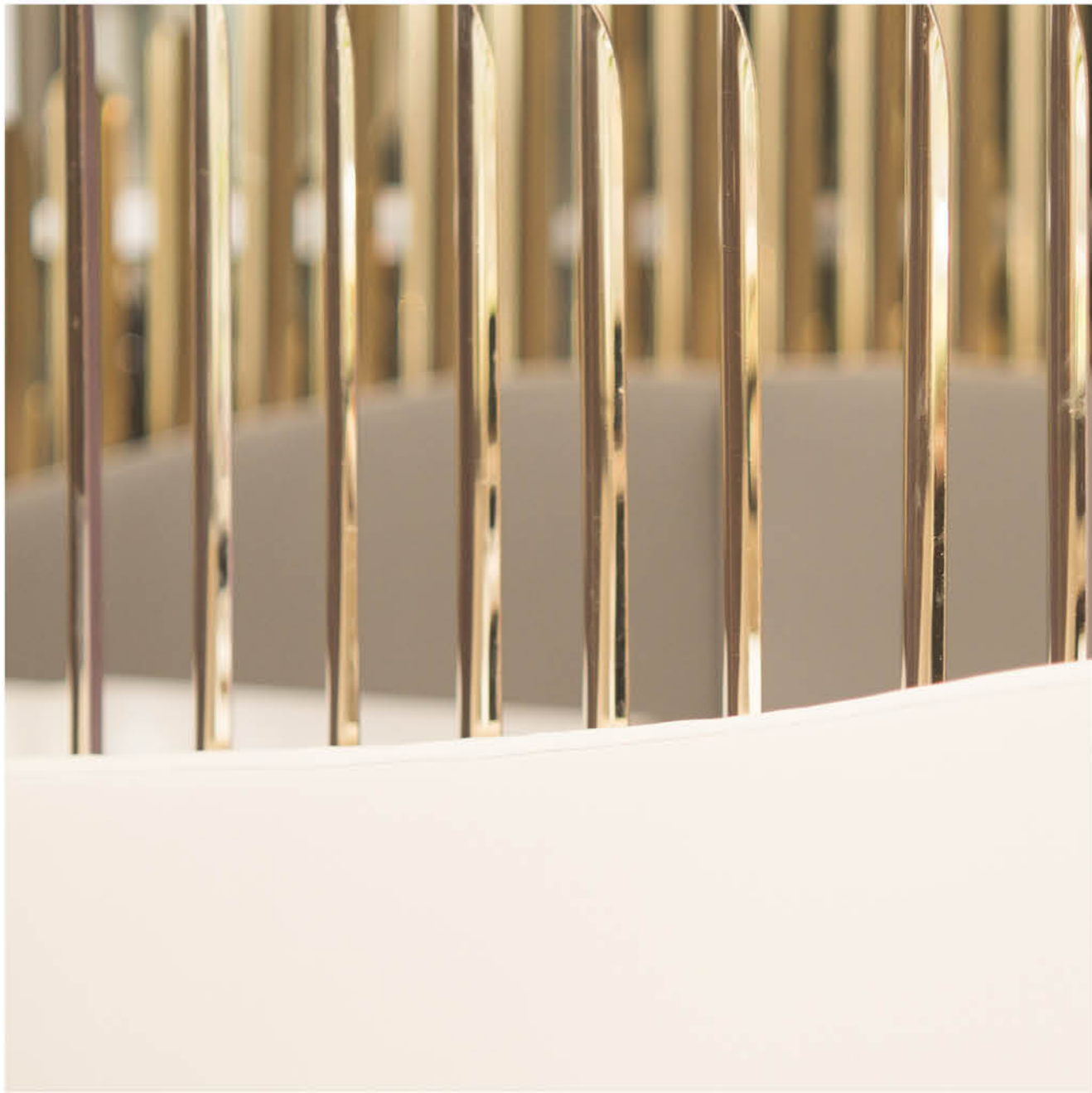
06_lobby view_大堂视角



07_lobby view_大堂视角



08_leaves detail_大堂叶片细部



09_leaves detail_大堂叶片细部



10_Indoors view_室内视角

细致处理室内空间

进入室内空间，我们选用了具有神秘隐匿色彩的主题色—孔雀蓝，细节处采用了更多精致的实木及大理石材质。

Sophisticated Indoors

Regarding interiors, we chose a colorful yet mysterious tone of peacock blue as the main color theme, as well as refined solid wood and marble materials to showcase on details.



11_Indoors view_室内视角

作为“山水”的延续，近千个大小不一的白色亚克力和镜面不锈钢片垂吊在空间顶部，借助粒子流体动力学模拟溪水的动态，不同的材质，或发光，或反射，犹如缓缓流动的溪水在阳光下的粼粼波光。

As an extension of the “mountains and rivers”, we hung close to one thousand leaves of white acrylic and reflective stainless steel at the top of the space, using particle hydrodynamics theory to simulate the flow of a stream of water, different material textures, light, and even reflections; just like the



12_Indoors view_室内视角

这股溪流从大堂入口开始，流经层叠变幻的山峦，流向空间中最繁忙活跃的吧台上方，随后在整个咖啡馆散开，最终如水花般消散在室外的阳光平台。

Thus, the stream is born at the entrance to the lobby, then flows through the cascading changes of mountains, into the most dynamic space of the project, right above the service counter, and spreads throughout the café, to eventually dissipate like gentle water flowers under the sun of the outer ter-



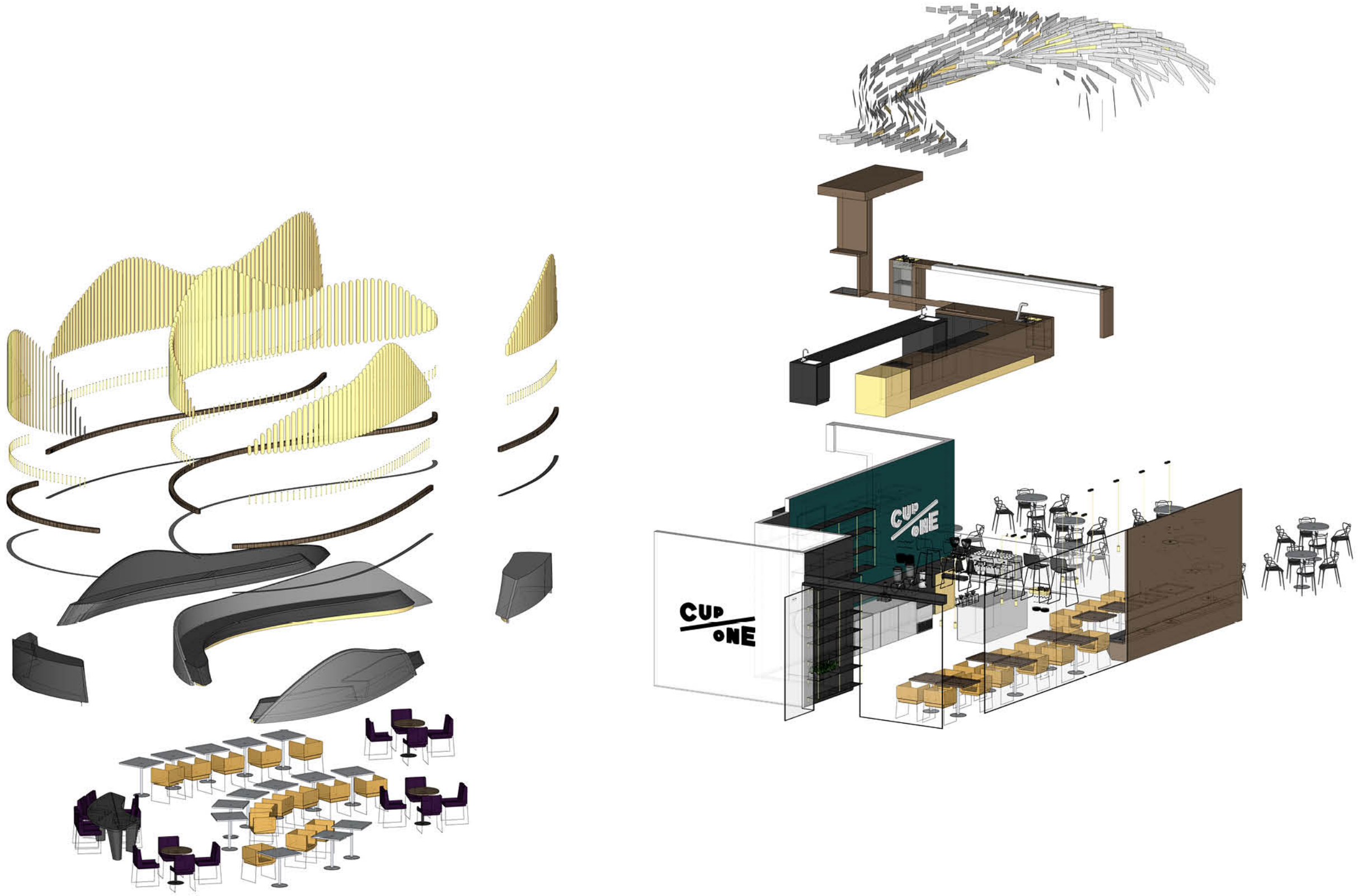
13_Indoors view_室内视角



14_Indoors detail_室内细部



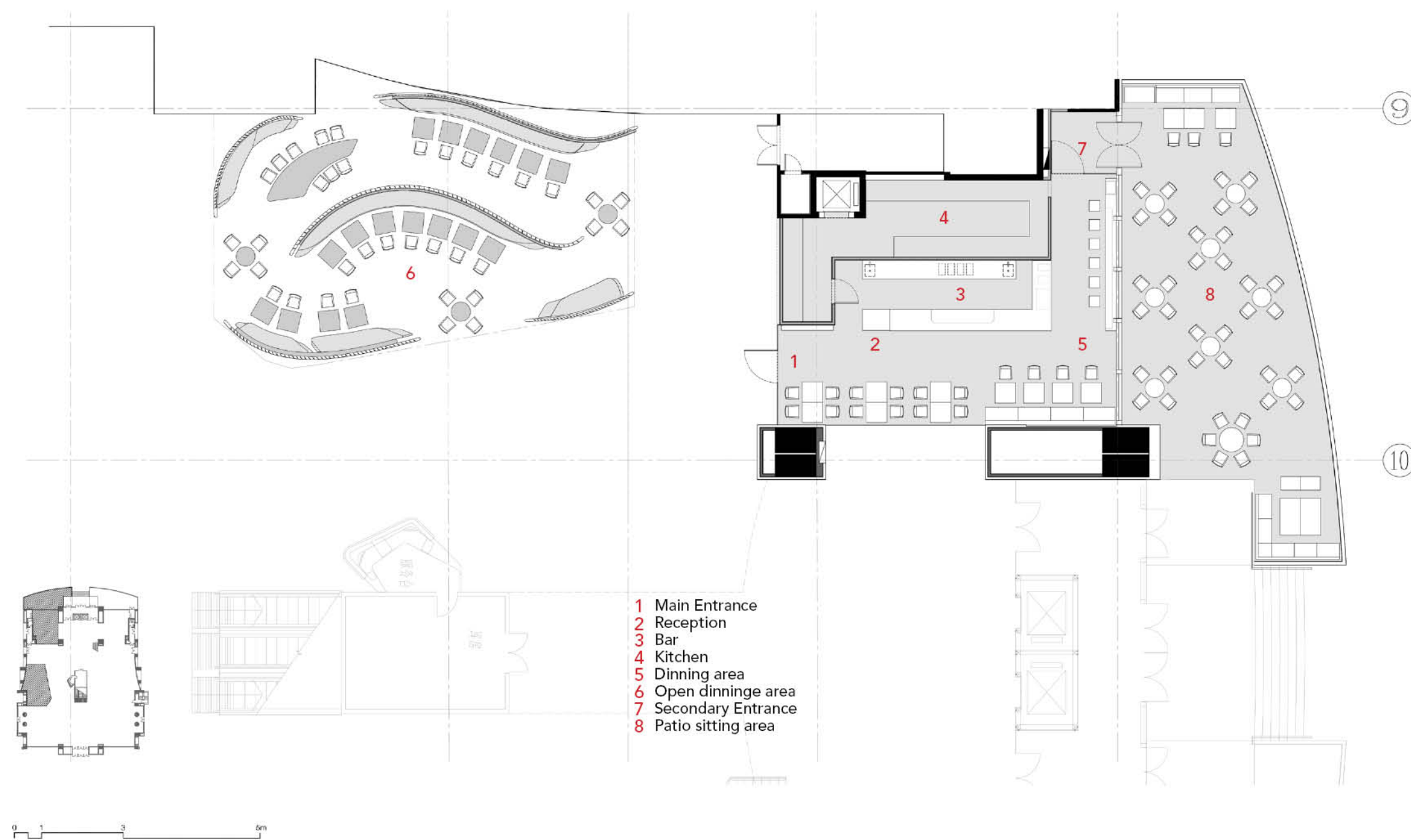
15_Indoors detail_室内细部



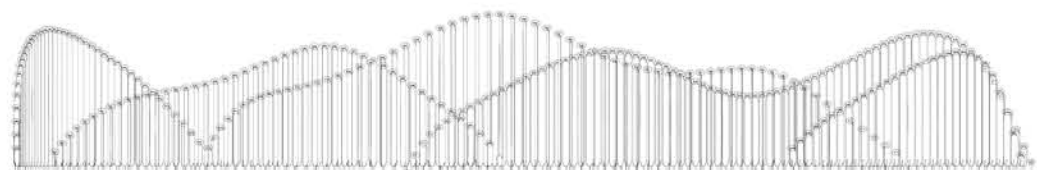
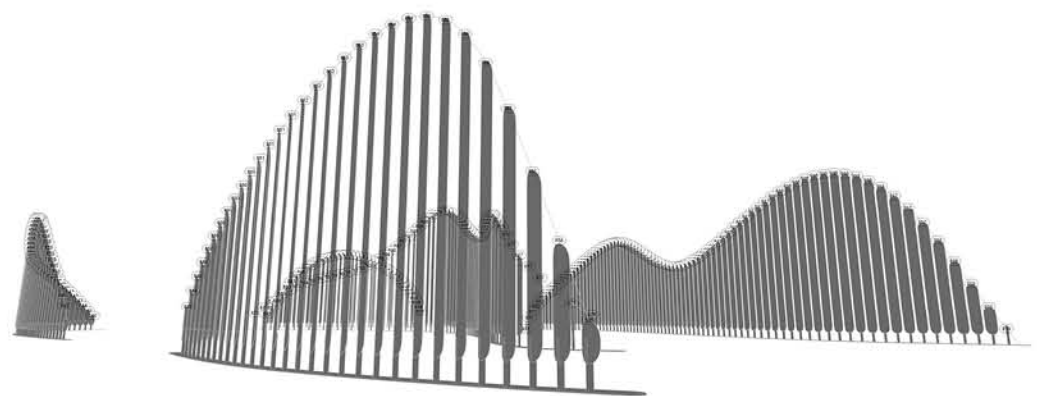
16_AXO_轴侧图



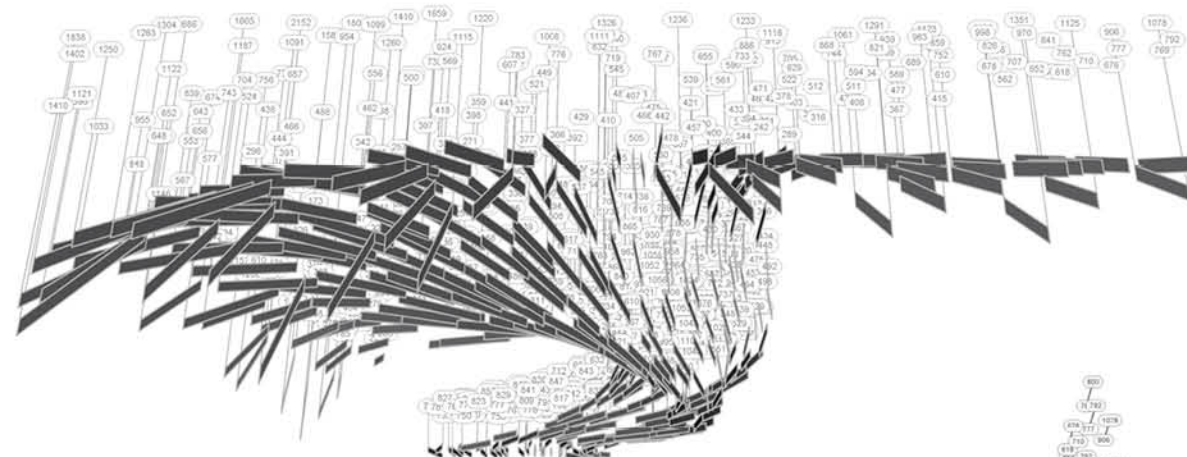
17_Elevation_立面



18_Plan_平面



19_ “Mountains” Leave length_地面叶片高度



20_” Rivers” Leave position_顶部叶片定位图