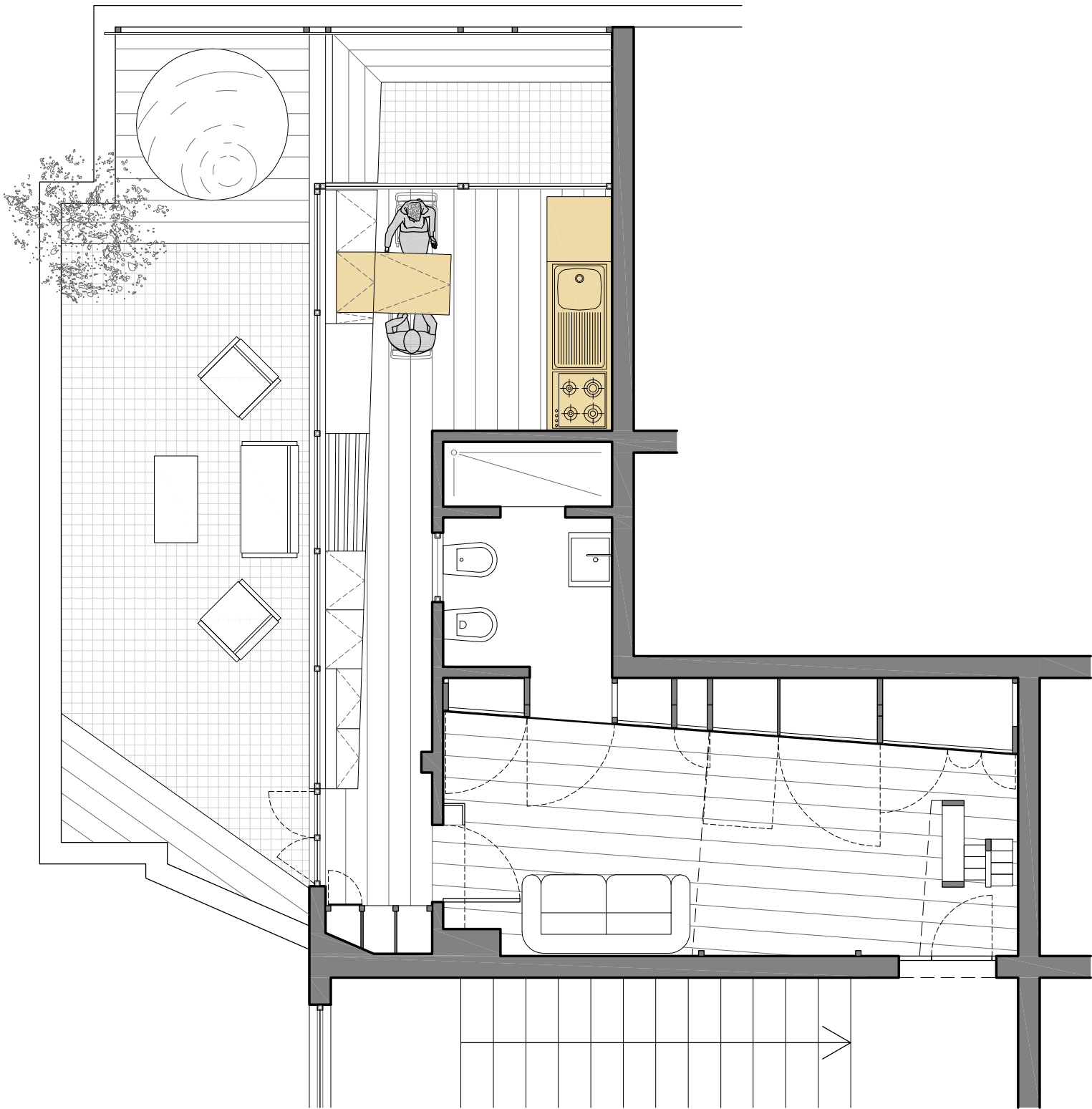
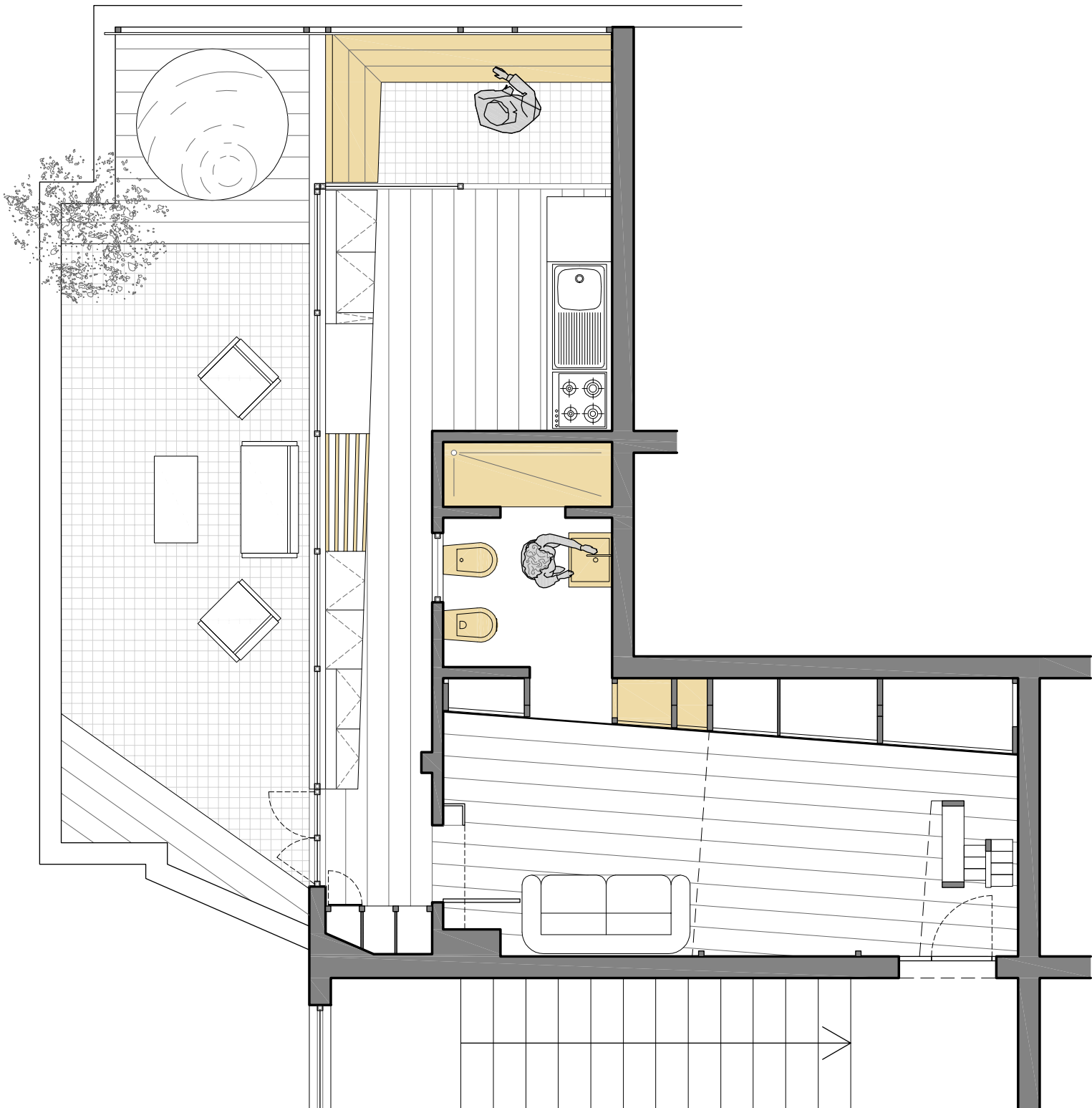


6.30 a.m. - good morning to him

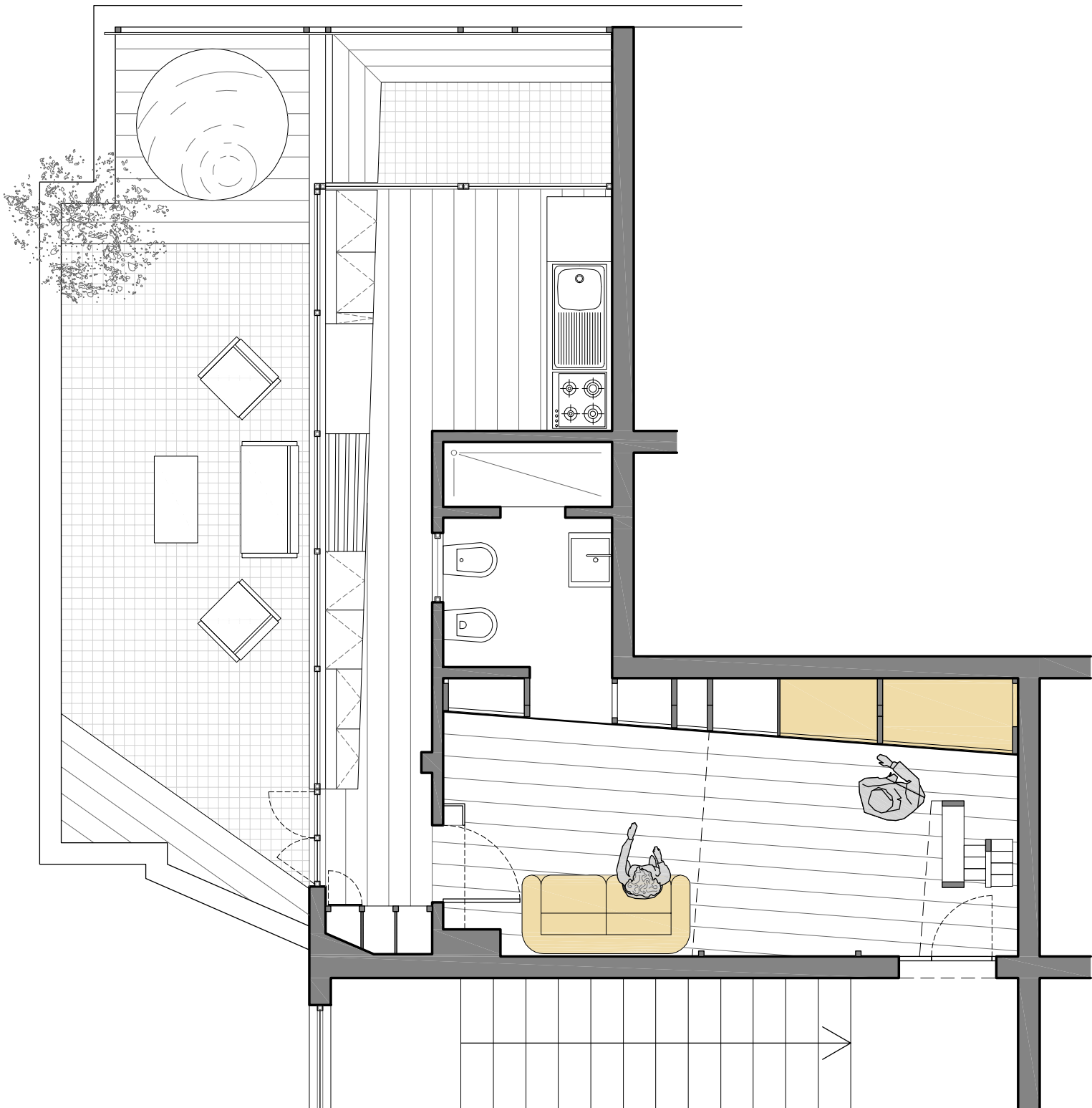




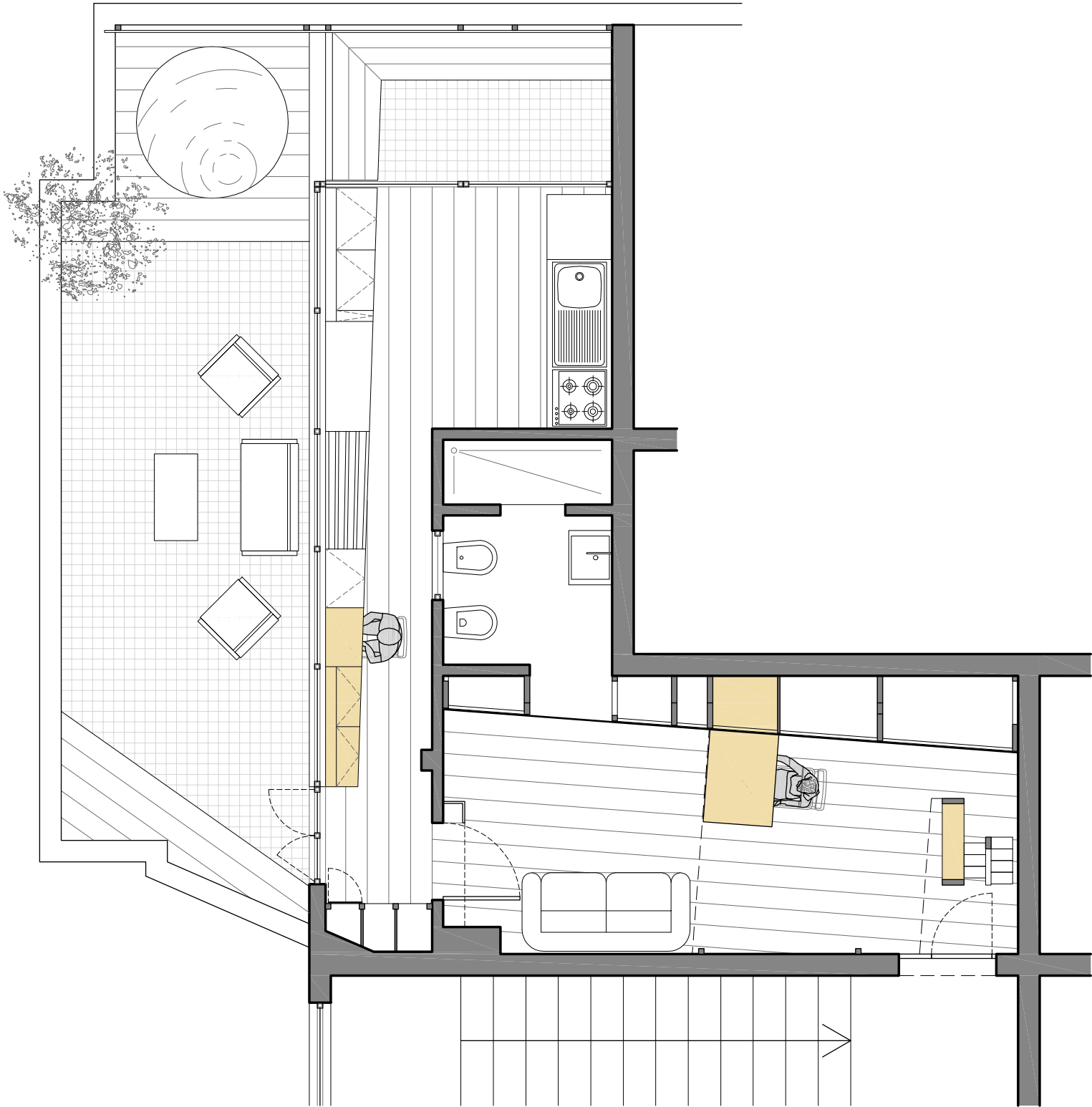
7.00 a.m. - breakfast



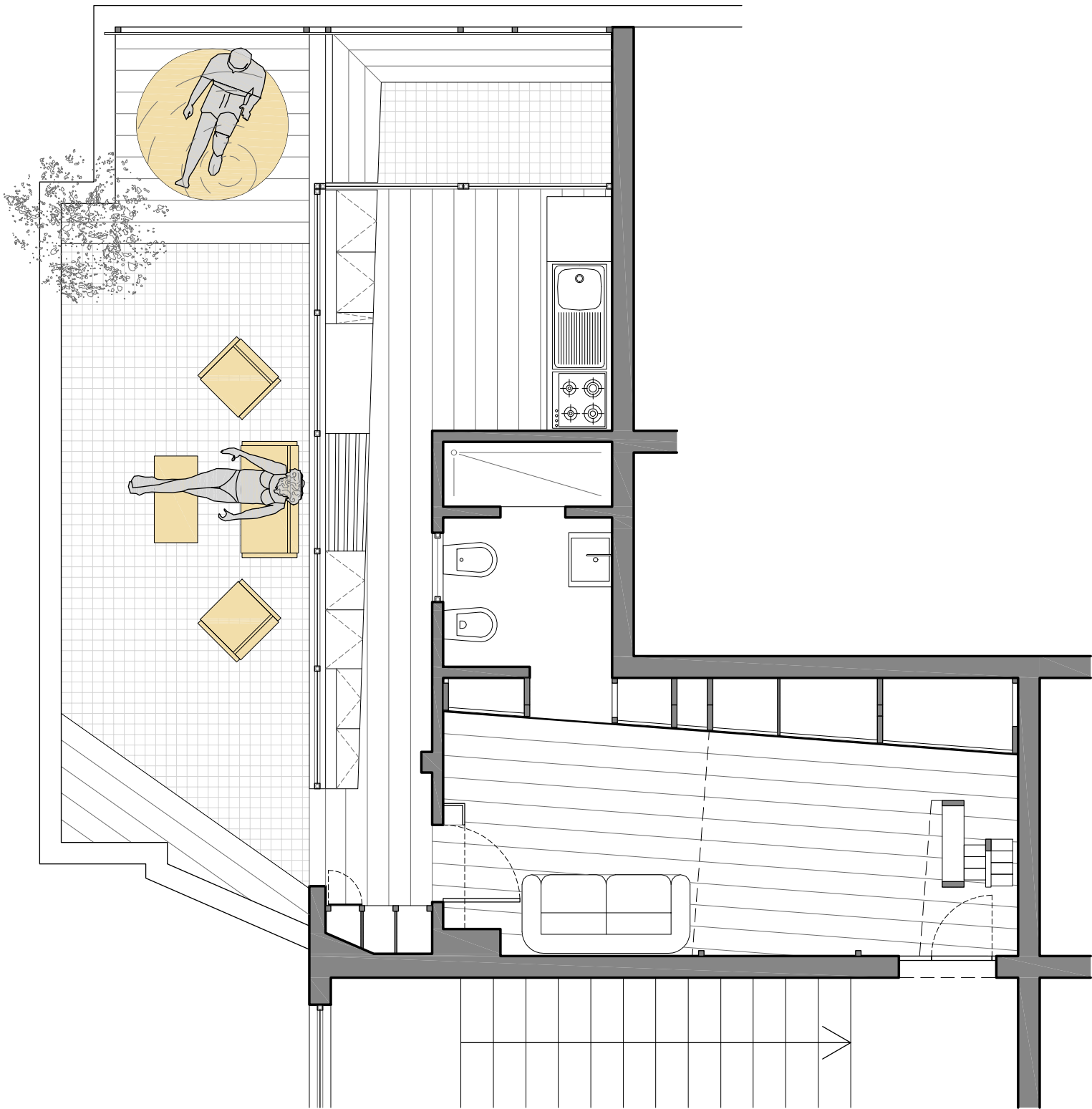
7.30 a.m. - him in the laundry



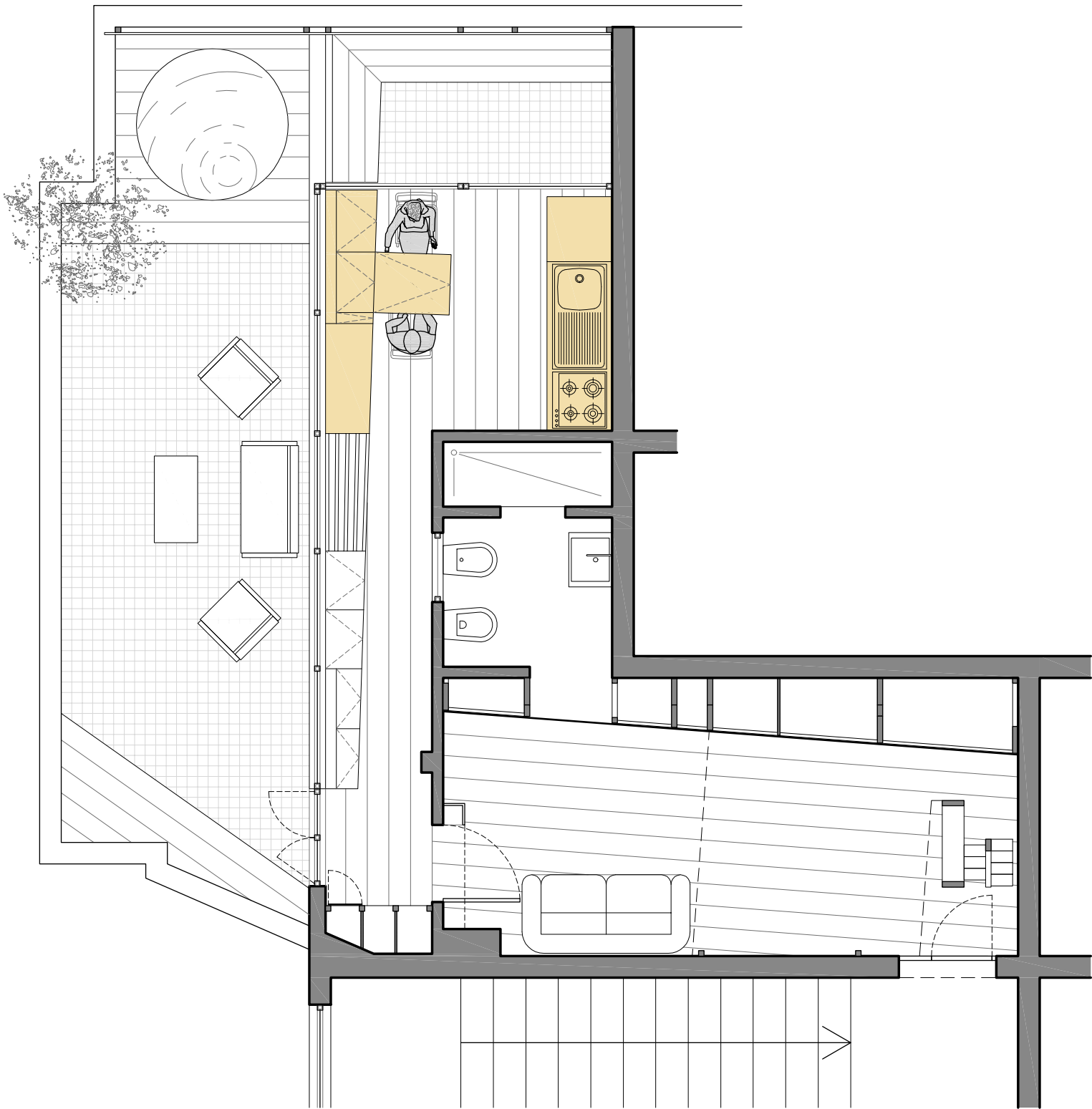
8.00 a.m. - they are preparing for the day



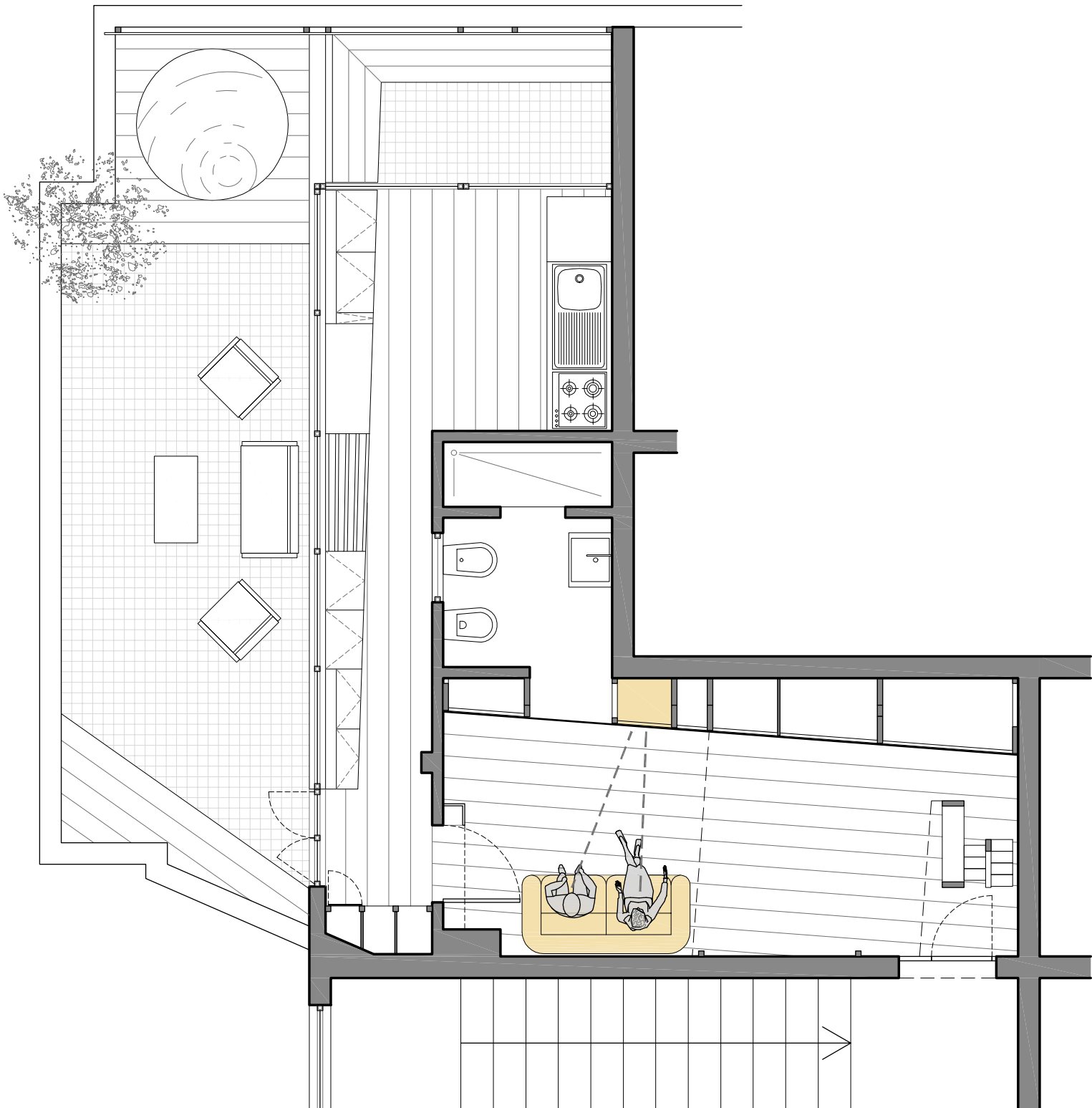
8.30 a.m. - welcome at our office of architecture!



1.00 p.m. - relax by the pool and soaking up the sun (summer)

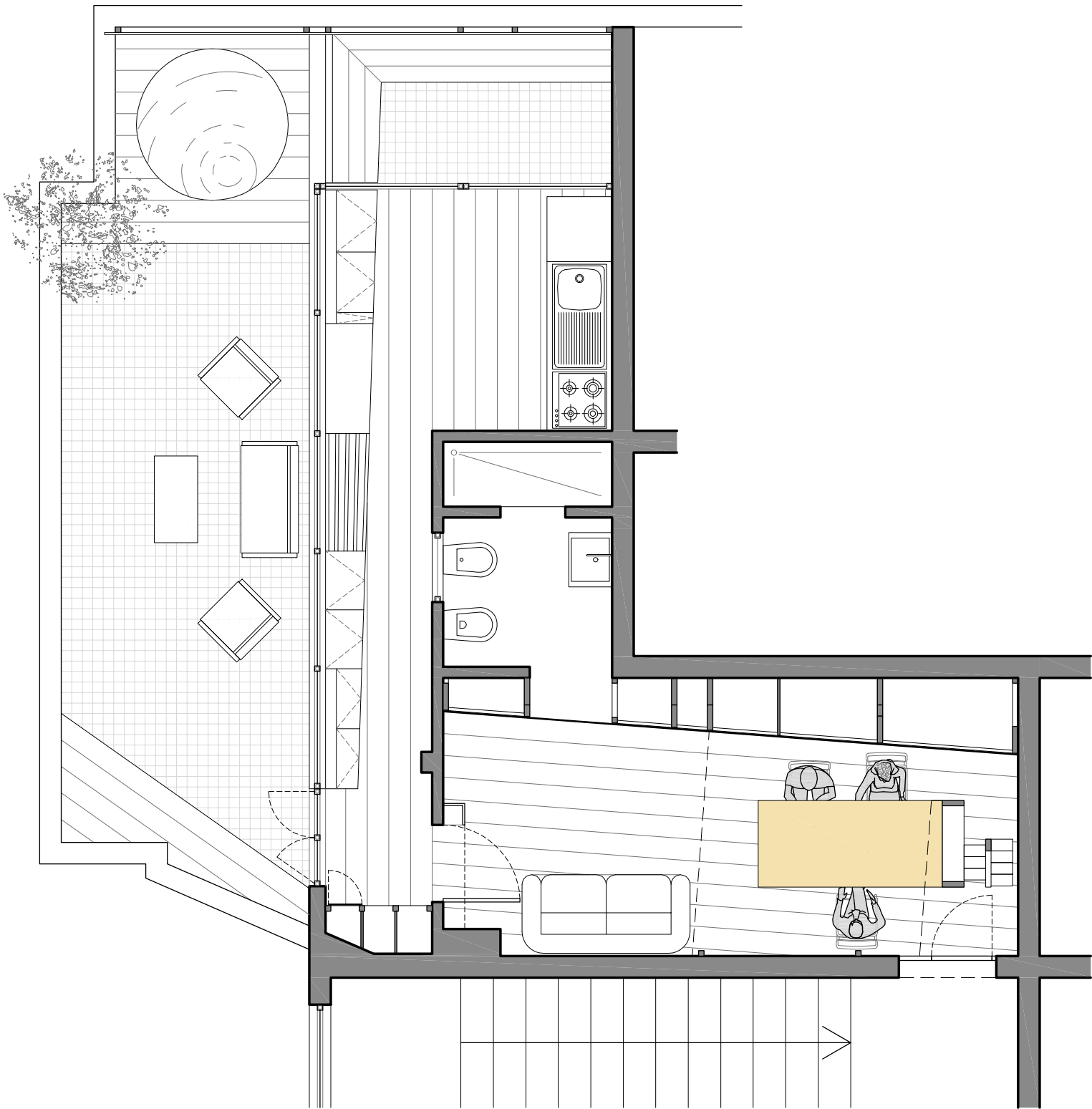


2.00 p.m. - enjoy your meal

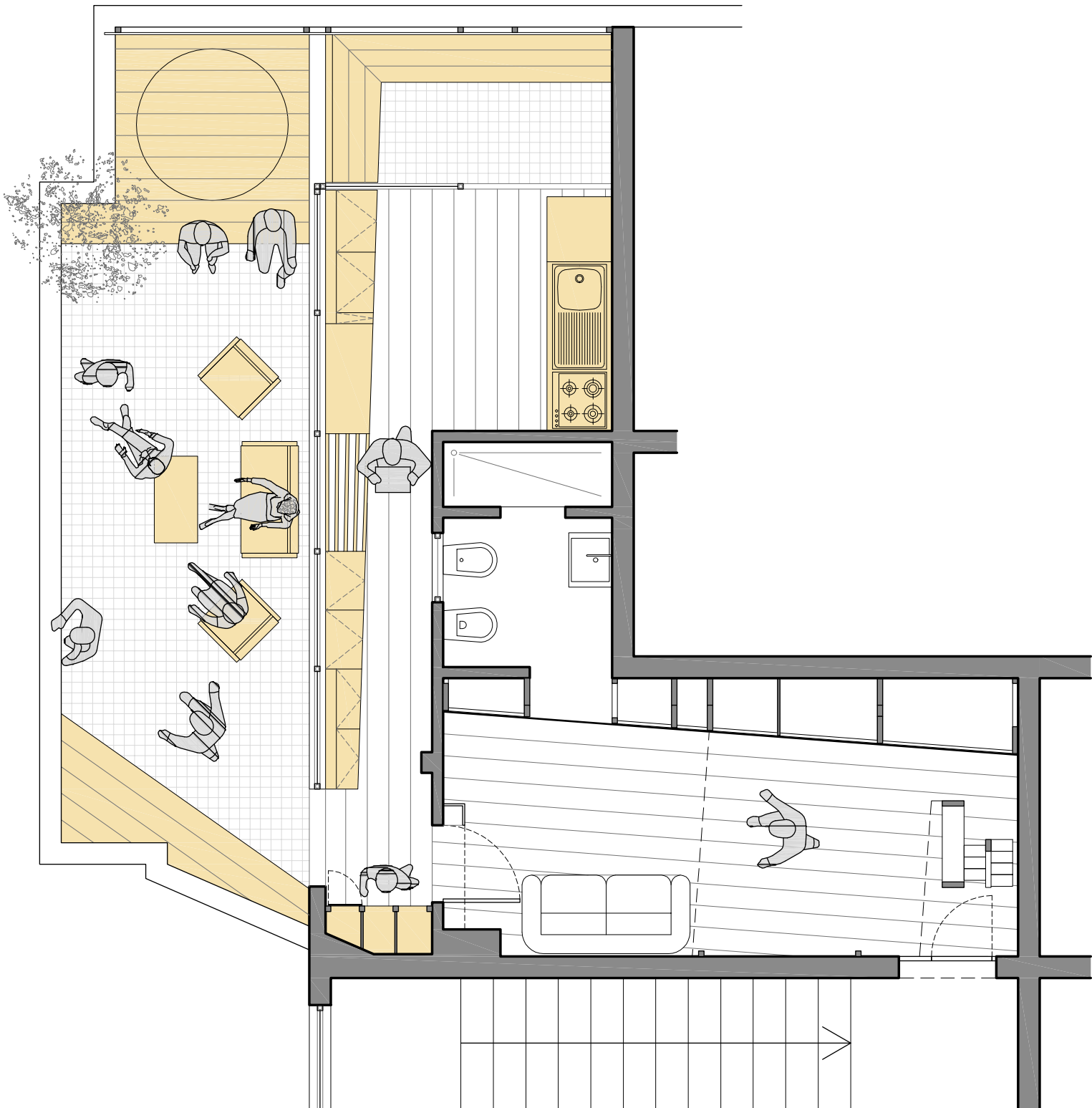


2.30 p.m. - nap in front of the television, see you later

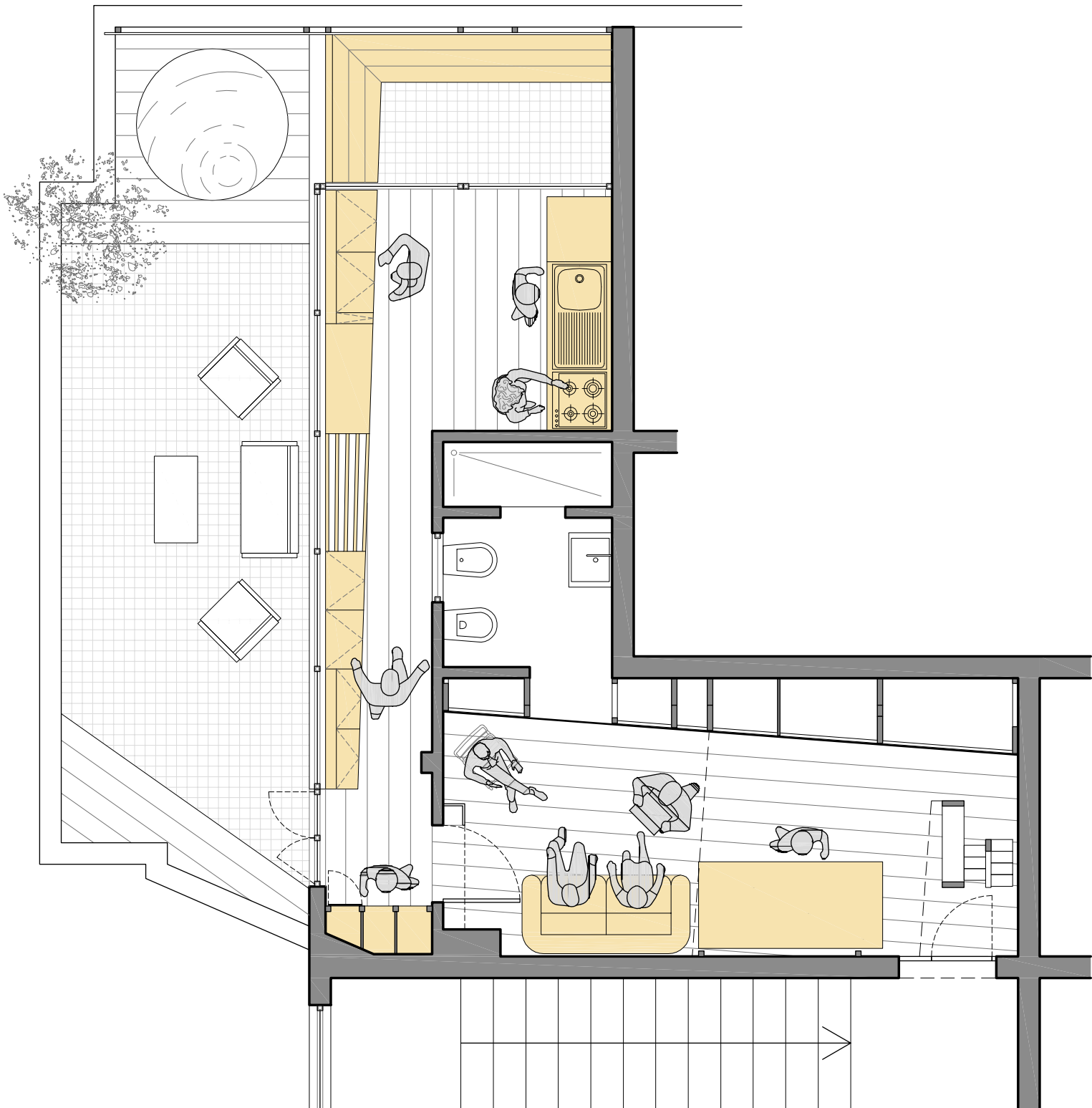




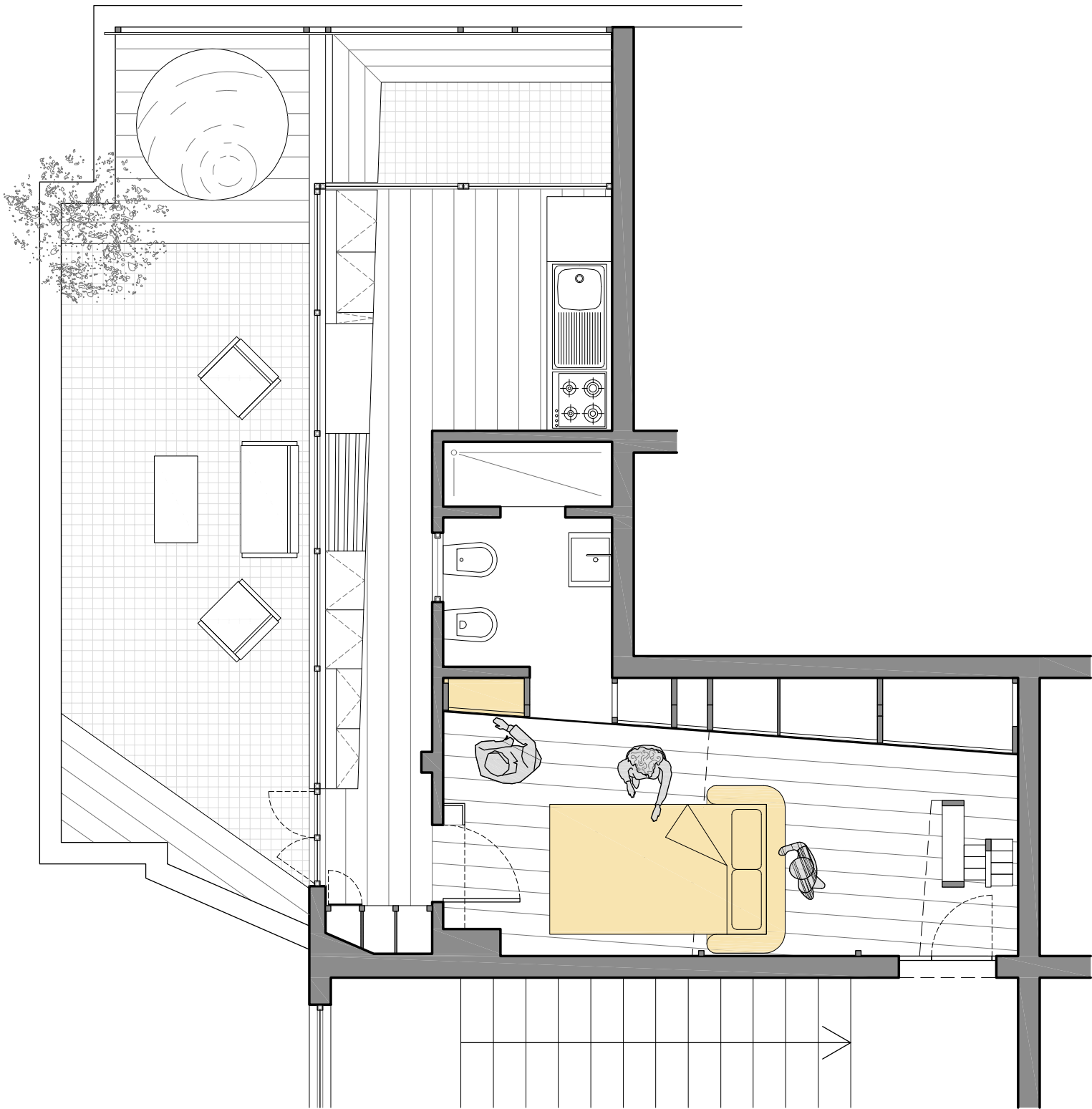
4.00 p.m. - meeting with clients



9.30 p.m. - summer party with friends



9.30 p.m. - winter party with friends



1.00 a.m. - sleeping time with guest