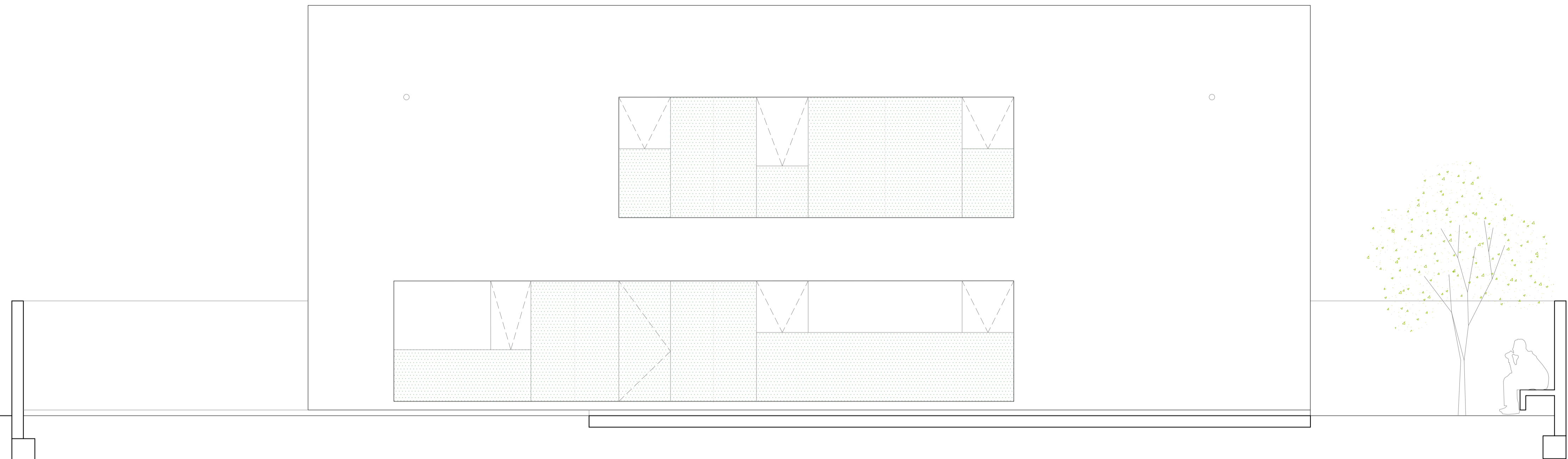
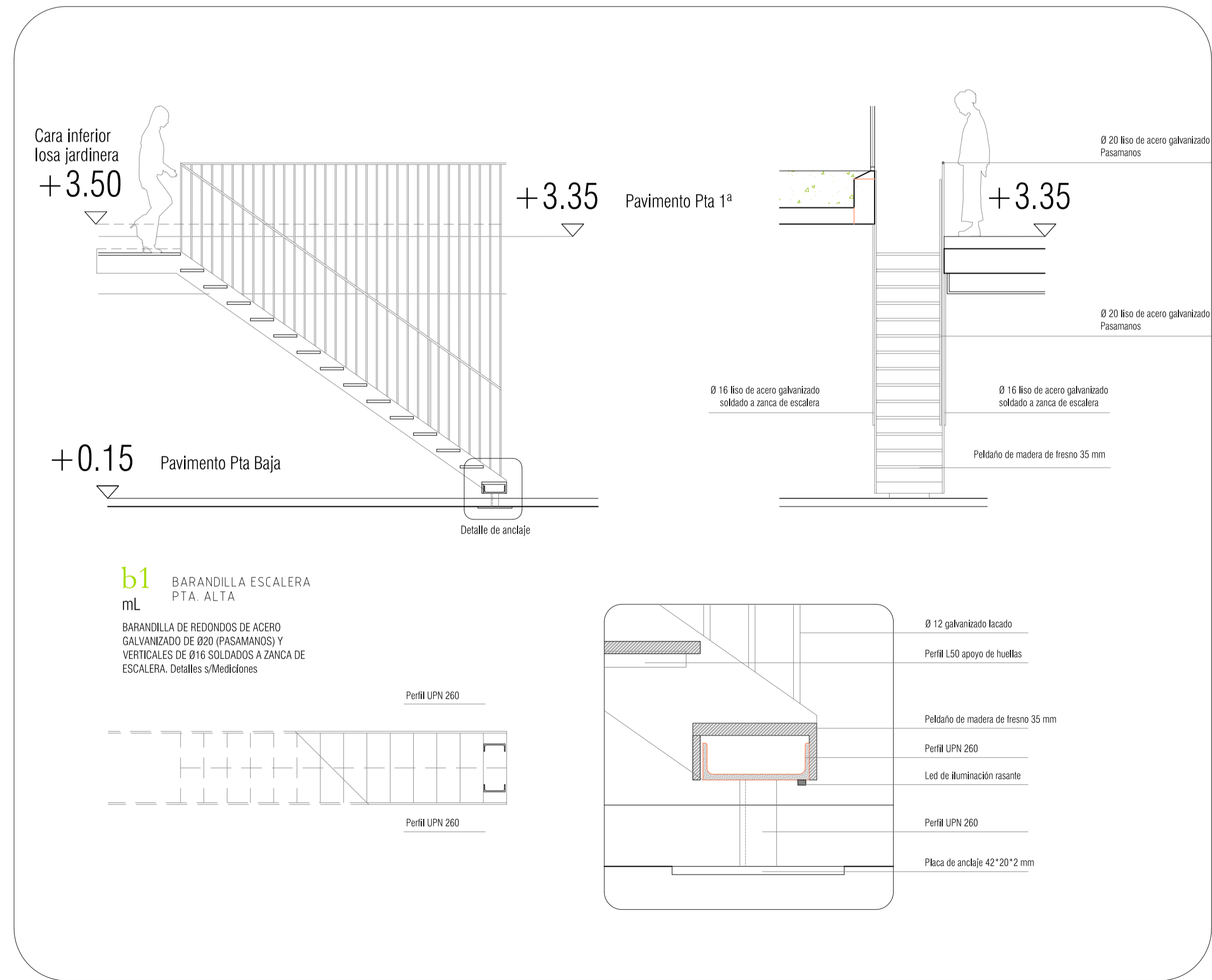


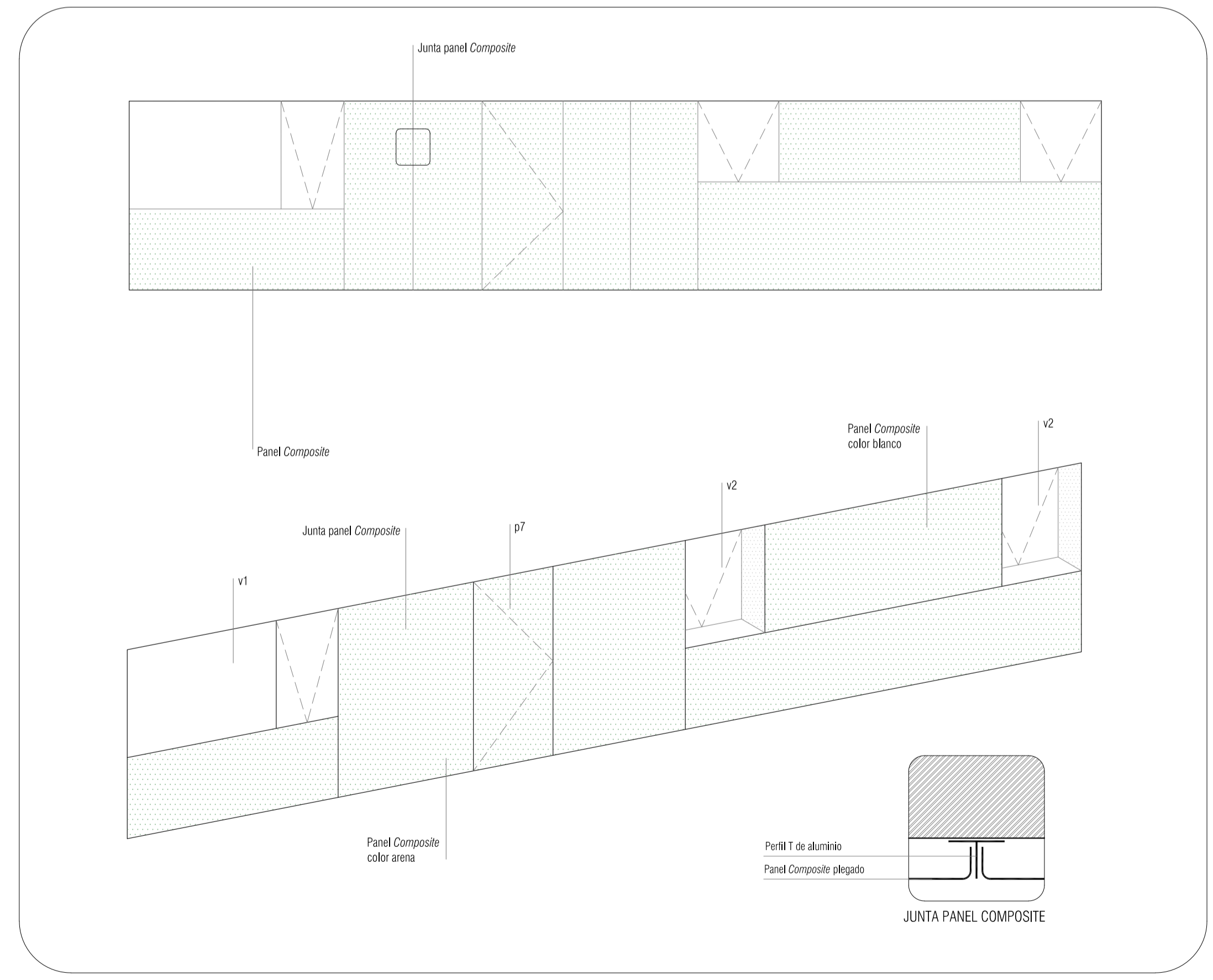
+7.05 Cumbreira alta
 ▽
 +6.30 Cumbreira baja
 ▽
 +5.85 Falso techo P.Alta
 ▽
 +3.70 Forjado 2'
 ▽
 +3.20 Forjado 2
 ▽
 +2.65 Falso techo P.Baja
 ▽
 Forjado 1/Pavimento exterior ±0.00
 ▽
 +0.15



11



DETALLES DE ESCALERA



FRENTE DE CARPINTERÍA FACHADA NORESTE

