

INQUADRAMENTO

CONCEPT

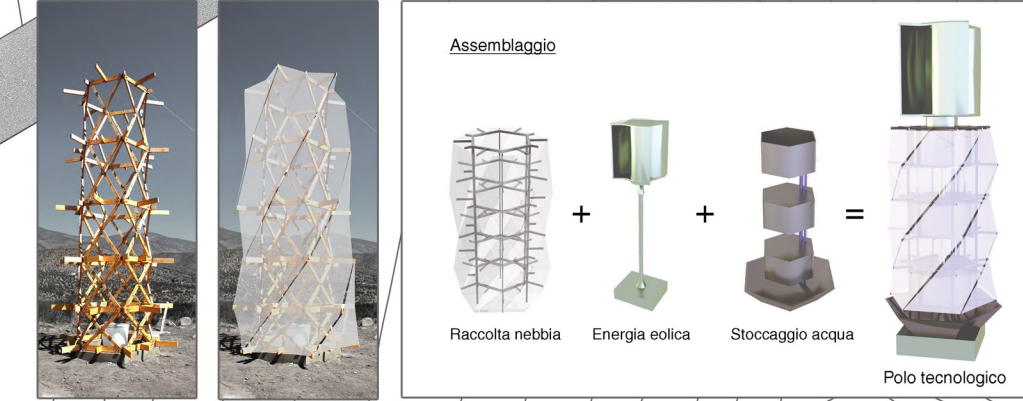
BIOPISCINA



RESIDENZA TIPOLOGIA 1

RESIDENZA TIPOLOGIA 2

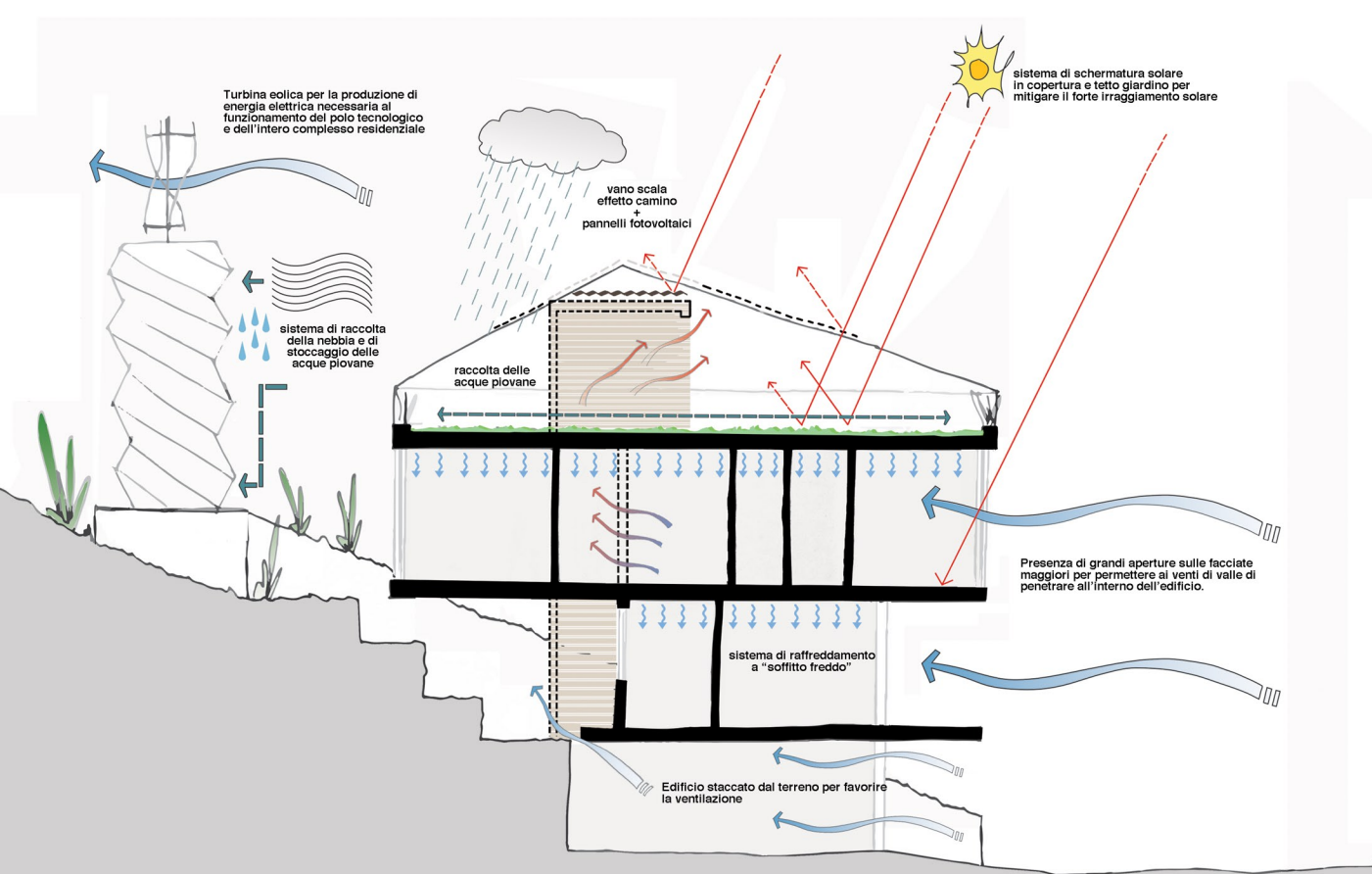
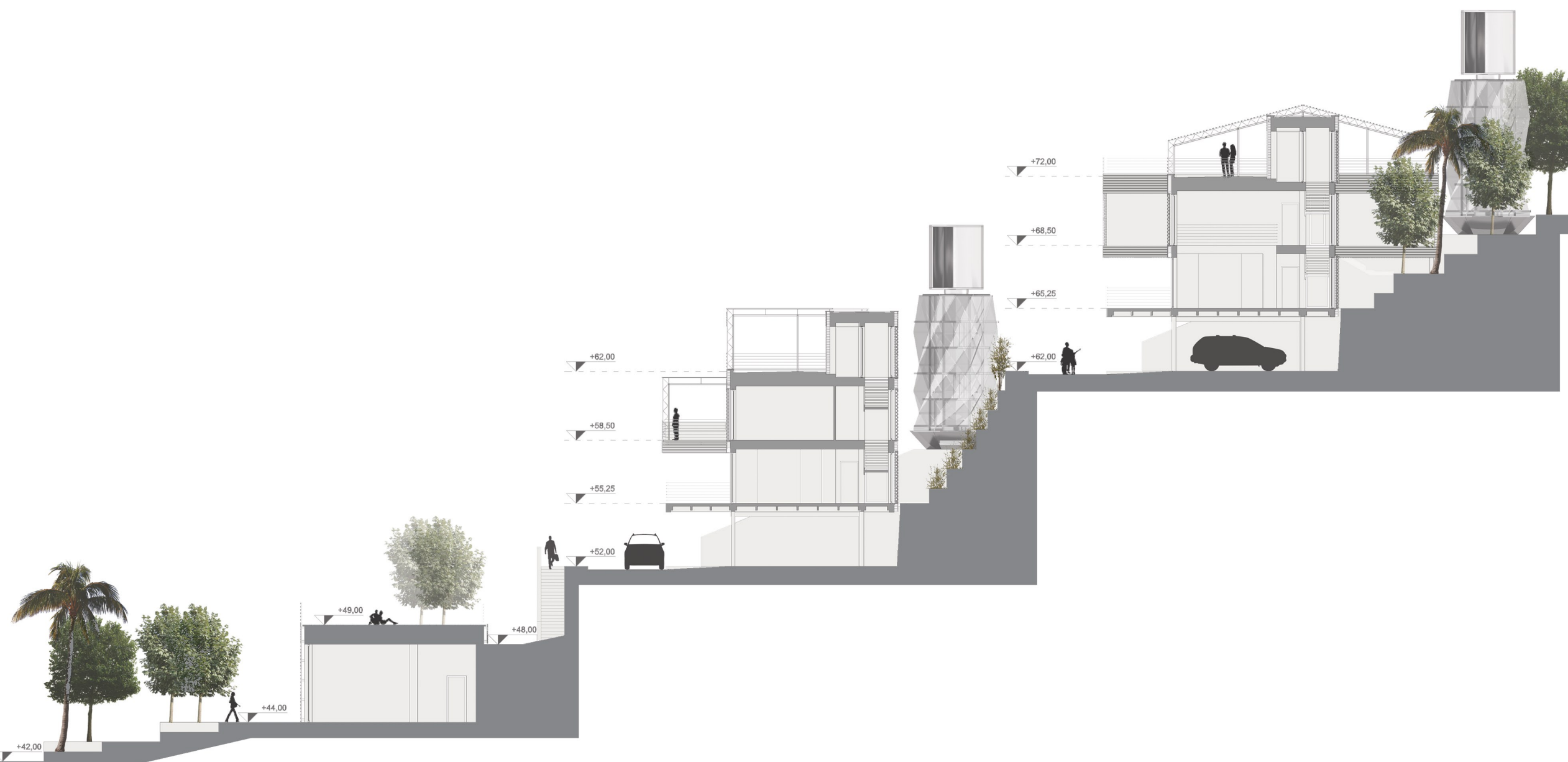
POLO TECNOLOGICO



AREA COMMERCIALE

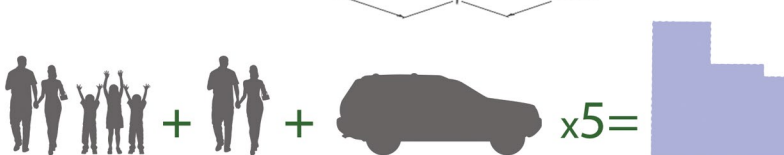
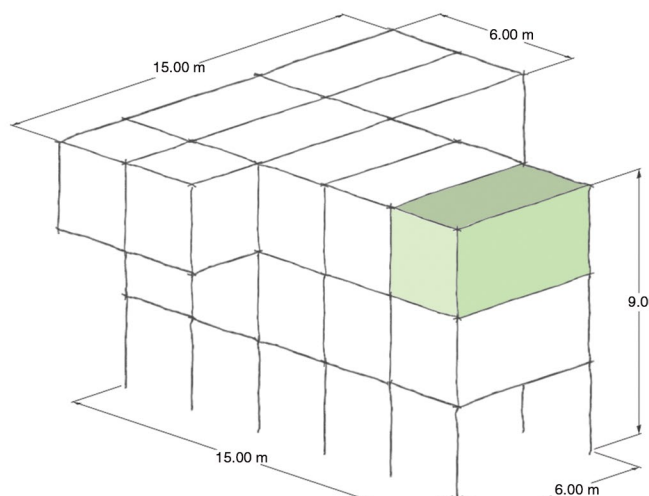


PLANIVOLUMETRICO scala 1:500



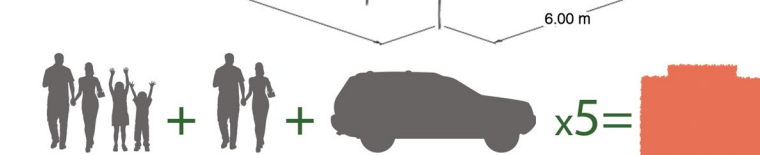
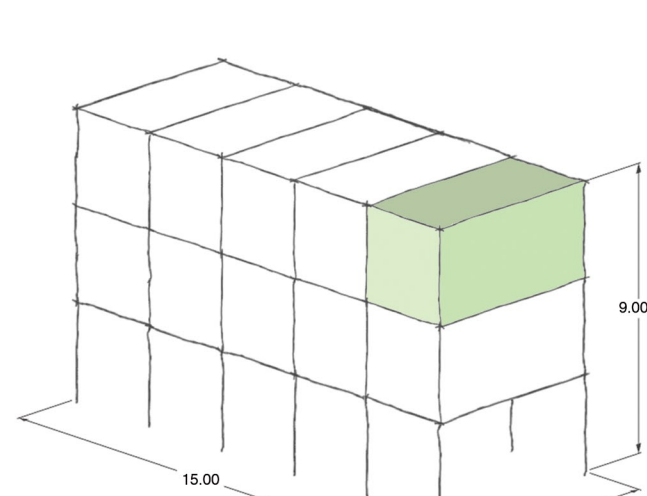
TIPOLOGIA 1

18.00m X 5 = 90mq PIANO PRIMO  
 18.00m X 8 = 144mq PIANO SECONDO  
 90mq + 144mq = 234mq TOTALE SUPERFICIE ABITABILE

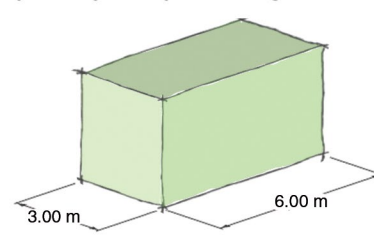


TIPOLOGIA 2

18.00m X 5 = 90mq PIANO PRIMO  
 18.00m X 5 = 90mq PIANO SECONDO  
 90mq + 90mq = 180mq TOTALE SUPERFICIE ABITABILE



3.00m X 6.00m = 18mq MODULO BASE  
 18.00mq X 5 = 90mq PIANTA BASE/GARAGE



Laboratorio di Sintesi Finale in  
 Progettazione Ambientale

Prof. Arch. Marco Sala  
 Prof. Arch. Fernando Recalde Leon

Assistenti: Arch. Francesco Simoni  
 Arch. Roberta Montalbini  
 Dott. Lorenzo Barghini  
 Dott.ssa Erica Fiumalbi  
 Dott. Francesco Esposito

Giacomo Fabbri  
 Stefano Giusti  
 Vincenzo Mancuso  
 Gabriele Marchi  
 Alessandro Masini