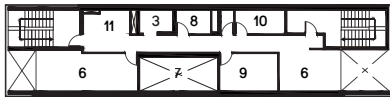
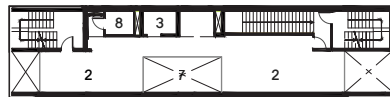


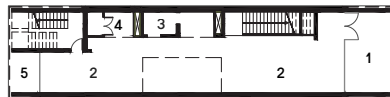
roof plan



third floor plan



second floor plan

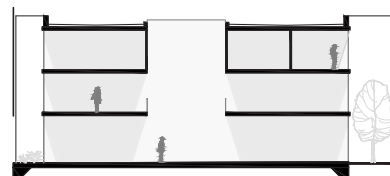
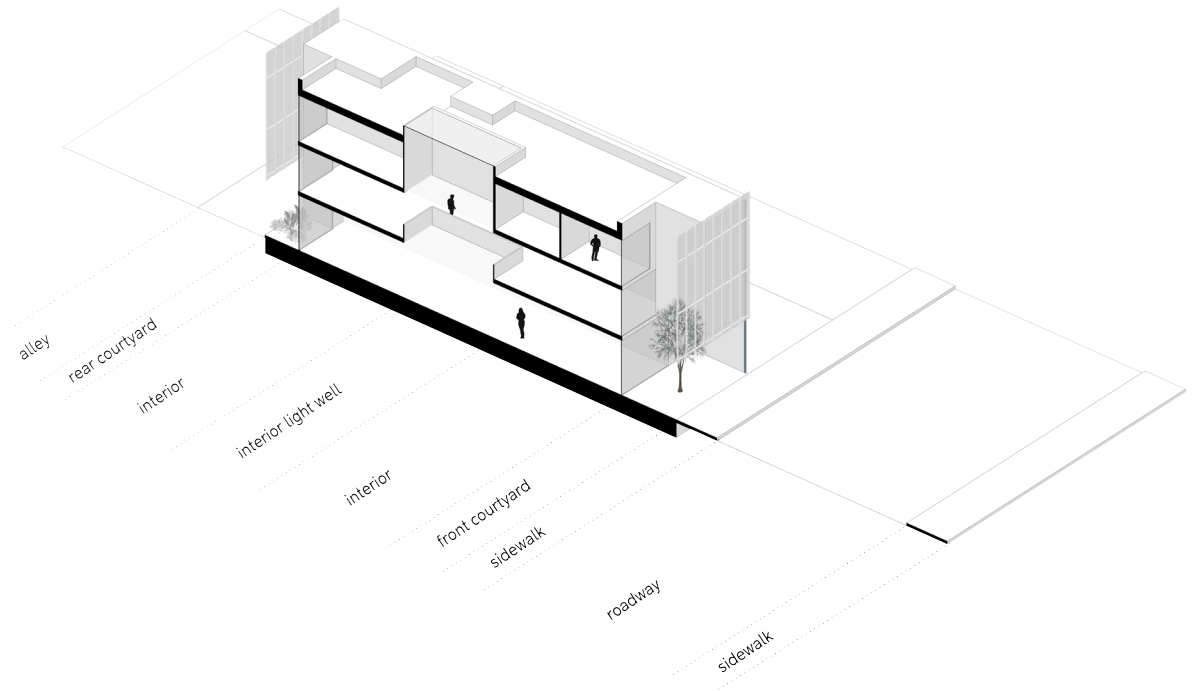


0 10' 20' 40'



ground floor plan

- 1 • front courtyard
- 2 • commercial space
- 3 • elevator
- 4 • technical room
- 5 • rear courtyard
- 6 • office
- 7 • open to skylight
- 8 • wc
- 9 • a/v room
- 10 • stock
- 11 • kitchen
- 12 • skylight



section A