



ECO-FRIENDLY

Ecologic - Ecological - Environmentally friendly - Ecotourism - Garbage collector Garbage man - Life-support system
O r g a n i c



WOOD

PATH



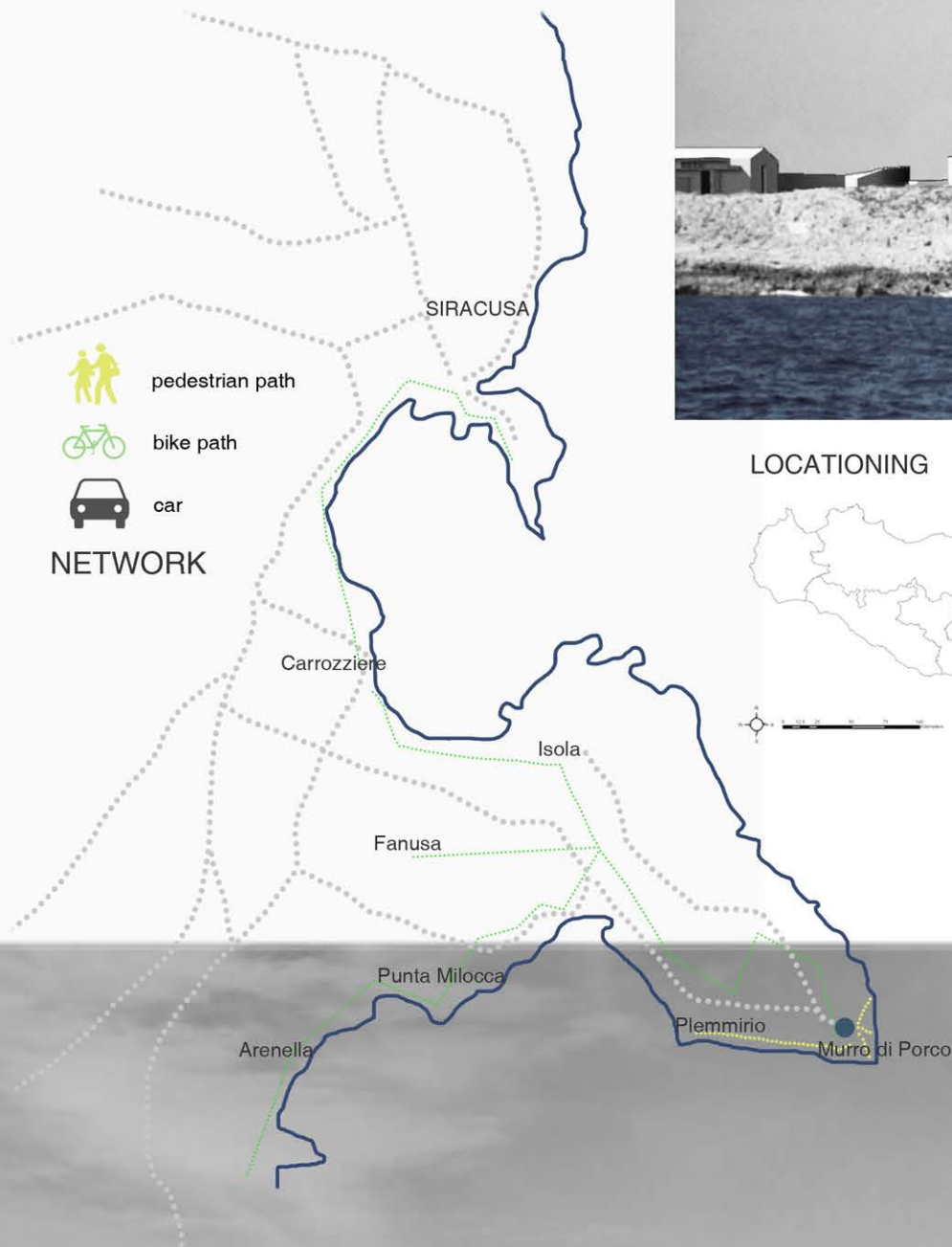
PLASTER

BUILDINGS

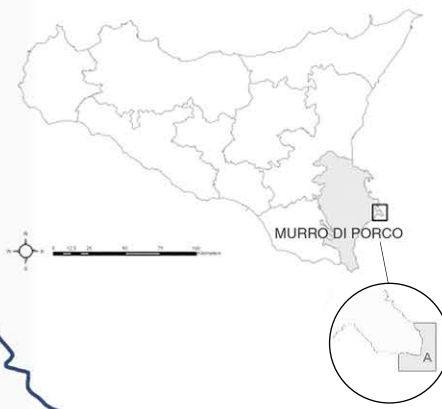


STONE

SCENES



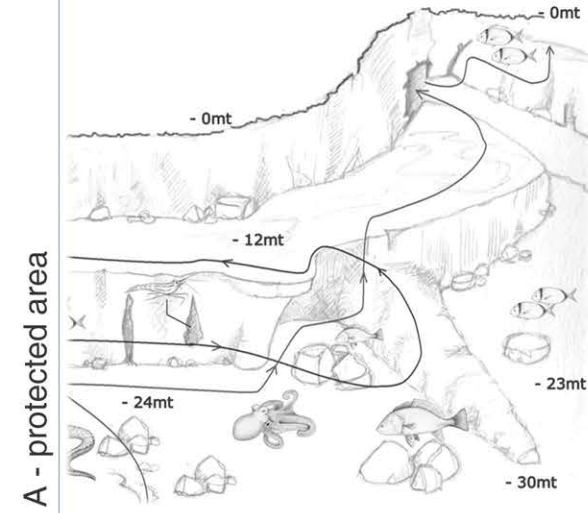
LOCATIONING



Reserve Area A bathing prohibition



Reserve Area A interdicted navigation



CENTER SYSTEM



ENTRANCE VIEW



Cottage

Parking

Scenes

Multipurpose facility

POLYFUNCTIONAL SPACE

The southwest side is dedicated to coffee shops, restaurants and to the function room. The main purpose is to provide the sea center with the possibility first, of supporting the daily activities of citizen and science but also of becoming bigger and to be able to set inside exhibitions, conferences and to create events.

COMUNAL AREAS

The square of the lighthouse becomes the place where culture and history, symbols and traditions, live again every day in a harmonious way. A meeting point for local people at the end of their working day, an aperitif bar, a restaurant, and a place where you can spend a few days in close contact with nature and with the opportunity of enjoying the outdoor amphitheater for organizing events or of the mixed-use room.

SCENES

We sight the vertical element of the lighthouse in the distance and at night, its light serves as maritime aid; some scenes which seem to arise naturally from the ground, guide us toward the light; as we approach we start sighting other spaces behind. Everything looks like guiding us toward the Sea, the key element of the entire scene.

COTTAGES

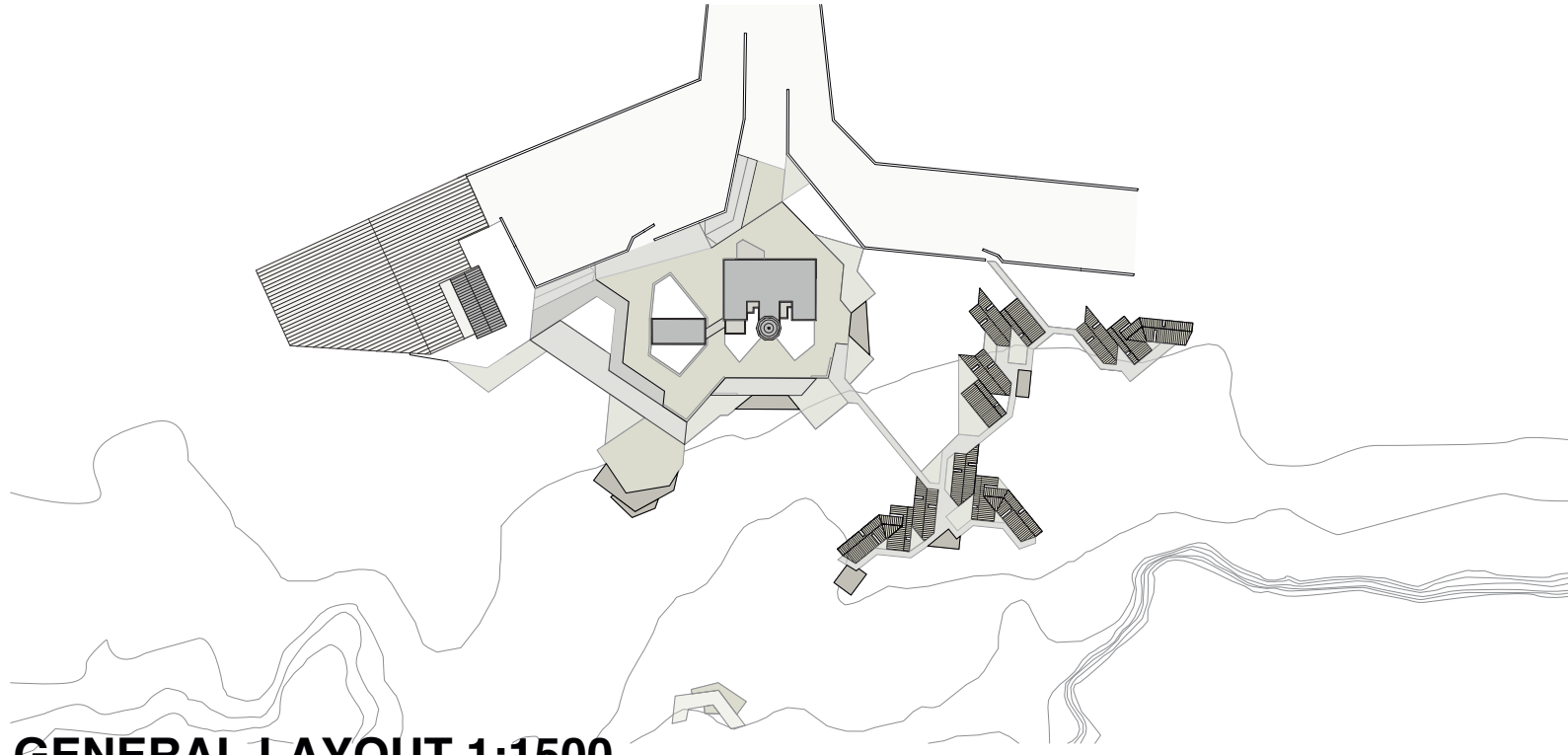
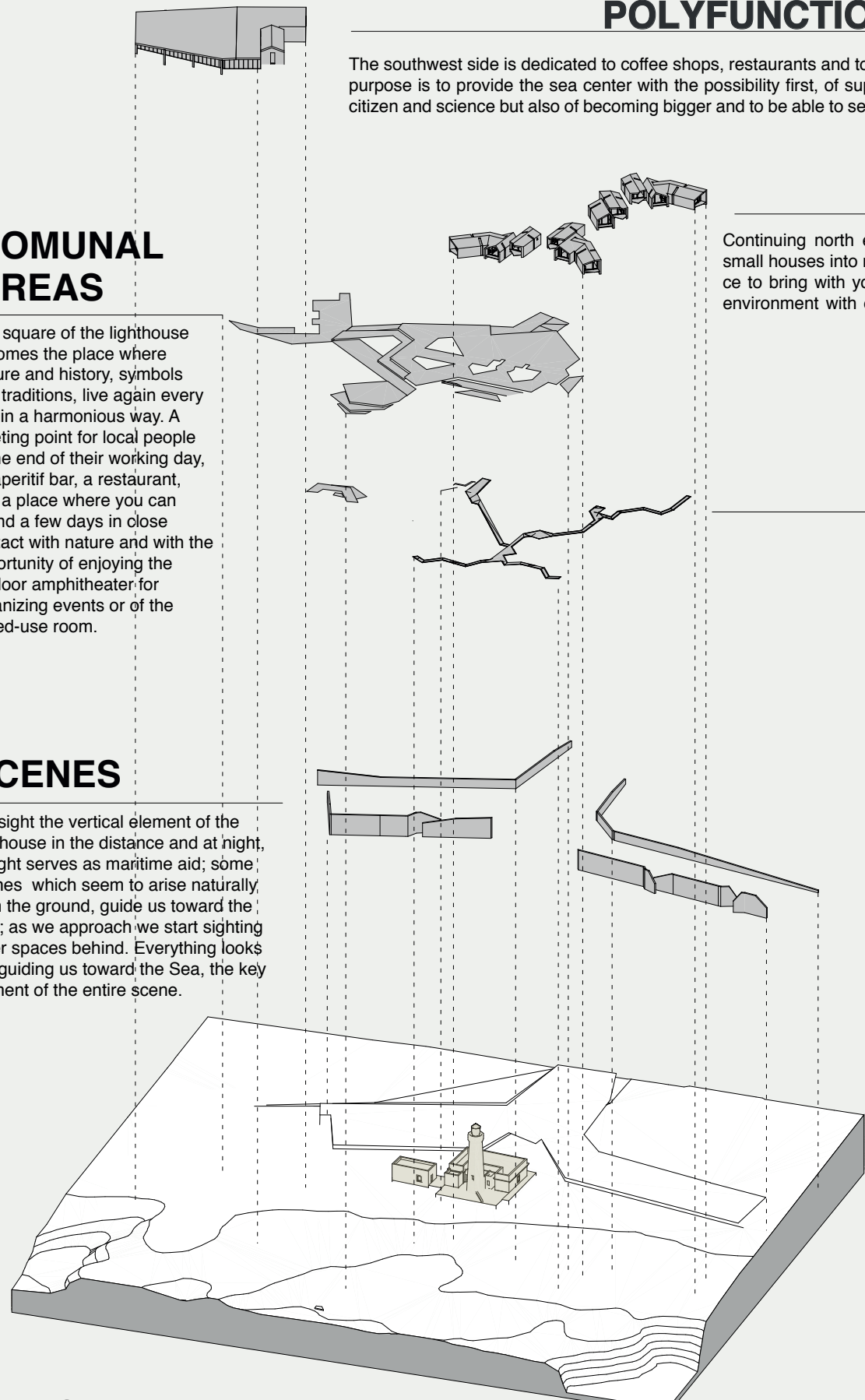
Continuing north east we meet the cottages, small houses into nature, a sensorial experience to bring with you for all your life. A pristine environment with cliffs and sea that dominate the surrounding.

PATHS

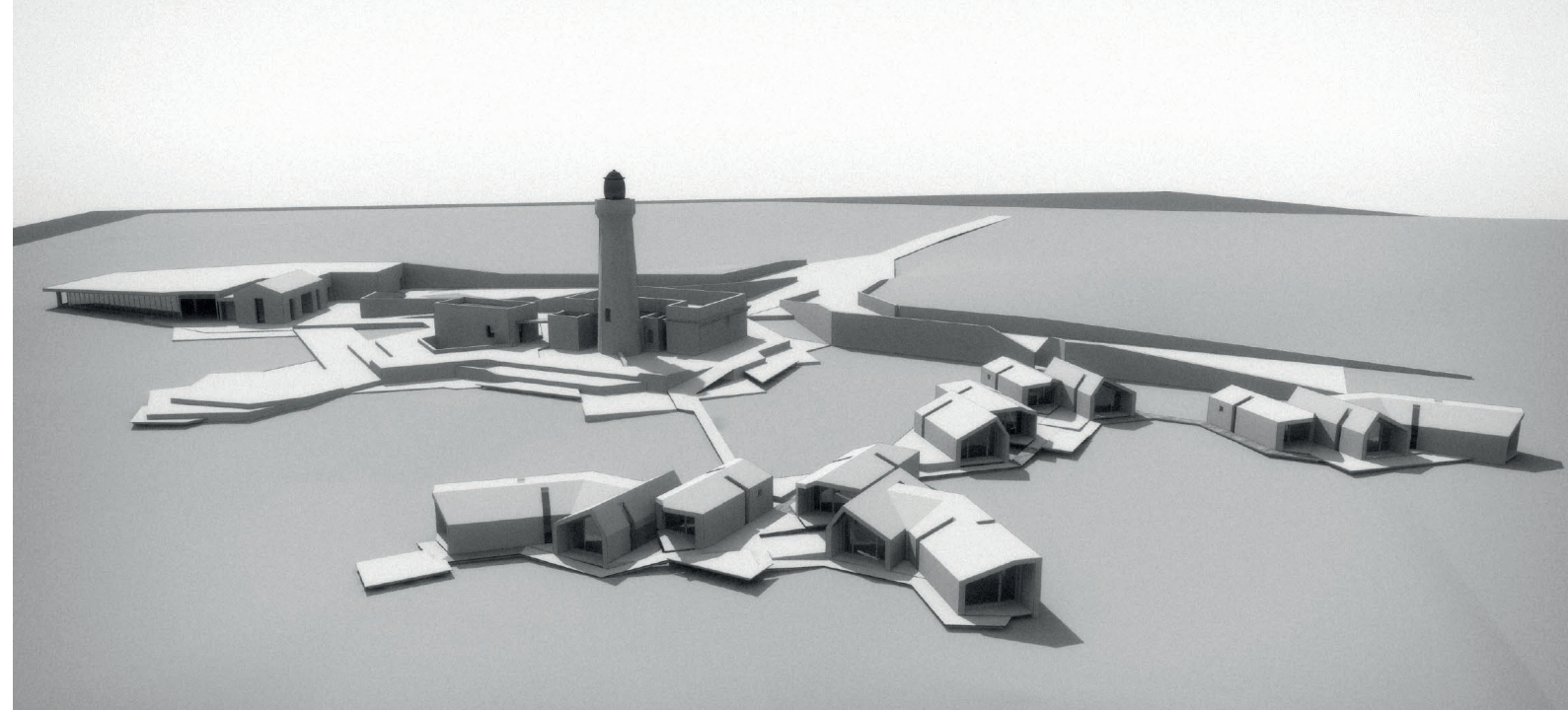
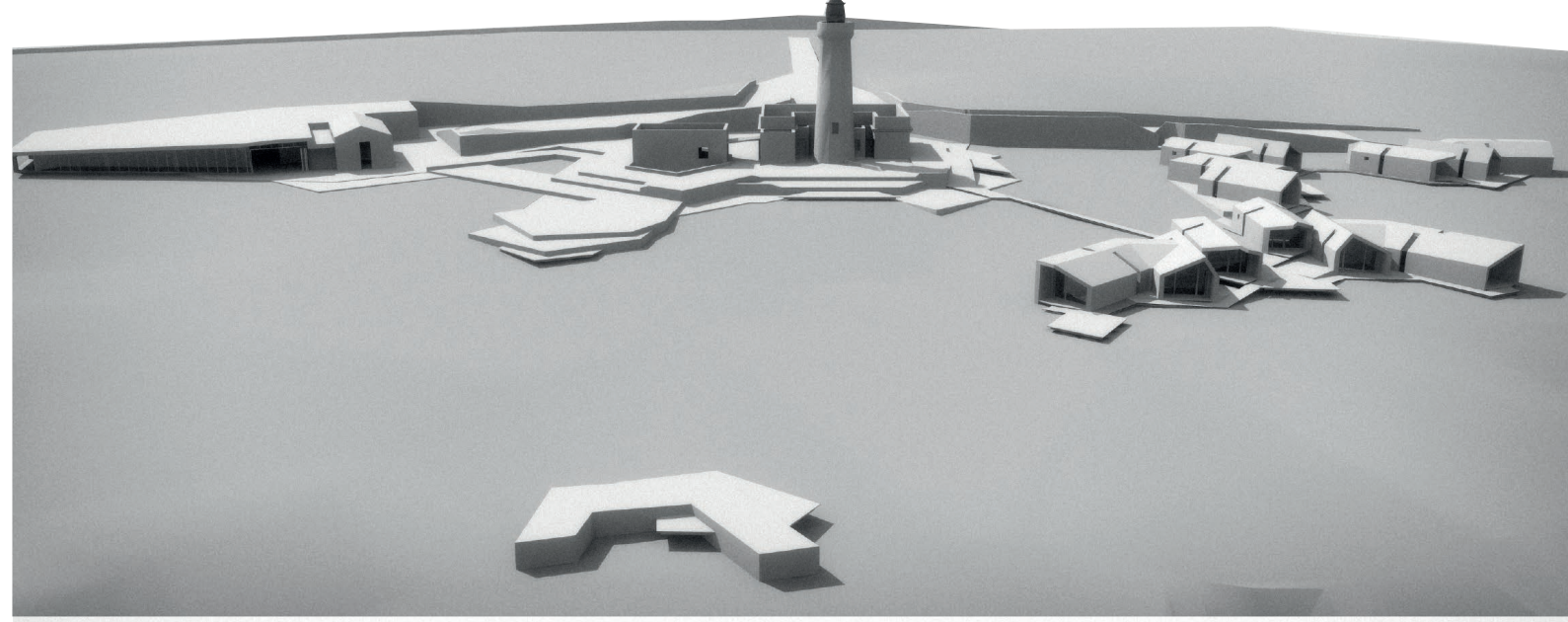
On one side, multiple paths on the hard rock give the possibility of looking at the landscape from abroad and in several spots you can stop and have a break before continuing; an ideal place to relax and restore your spirit in front of the sea. The paths lead at first to the lighthouse with its main square and on which appears the sea center. From there you can reach the other smaller squares and the outdoor amphitheater themed journeys through the underwater habitats of the Plemmirio MPA. Real time and freely available multimedia screens will guide the discovery of the seabed and of its archeologist artifacts (i.e. amphora necks form the Second World Word) including seabed maps.

SEA CENTER

Hence, the inside of the lighthouse is setted up with small spaces that give the opportunity of following interactive multimedia itineraries into the underwater marine world. The lighthouse will thus be able to maintain its autonomy and functionality and at the same time to offer all visitors important information about its working principles and on the Marine Protected Area (MPA) of Plemmirio. In this regards the lighthouse will work to combine modern display technology, biological expertise and entertainment to provide themed journeys through the underwater habitats of the Plemmirio MPA. Real time and freely available multimedia screens will guide the discovery of the seabed and of its archeologist artifacts (i.e. amphora necks form the Second World Word) including seabed maps.

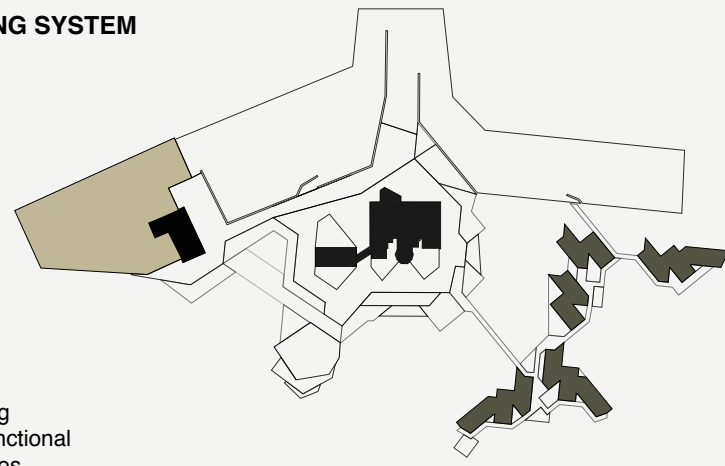


GENERAL LAYOUT 1:1500



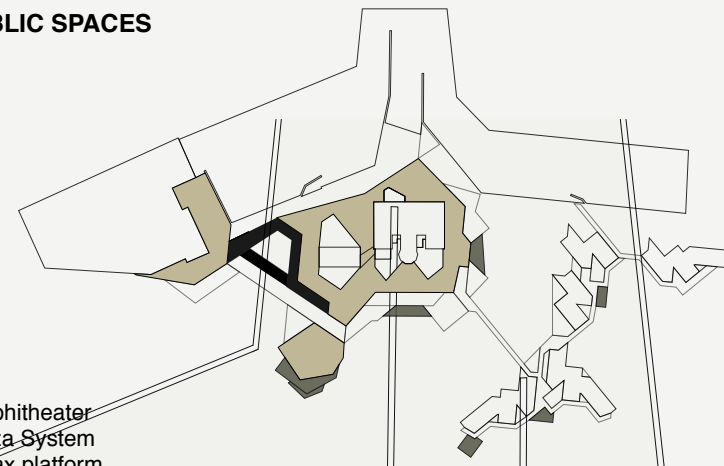
BUILDING SYSTEM

- Existing
- Polyfunctional
- Cottages



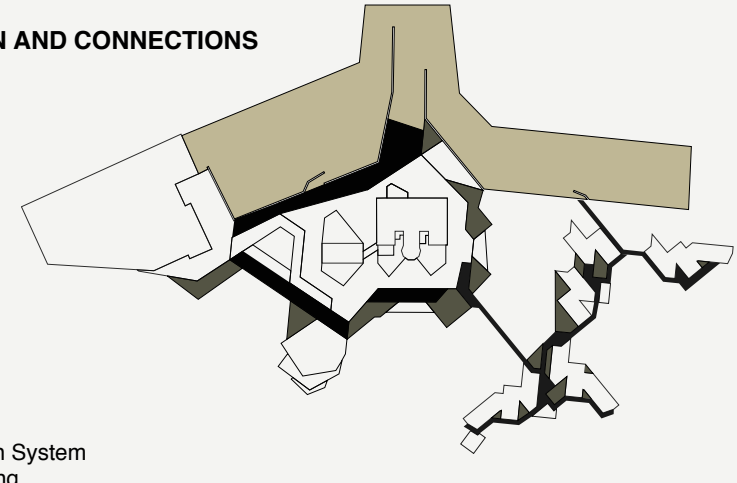
PUBLIC SPACES

- Amphitheater
- Plaza System
- Relax platform

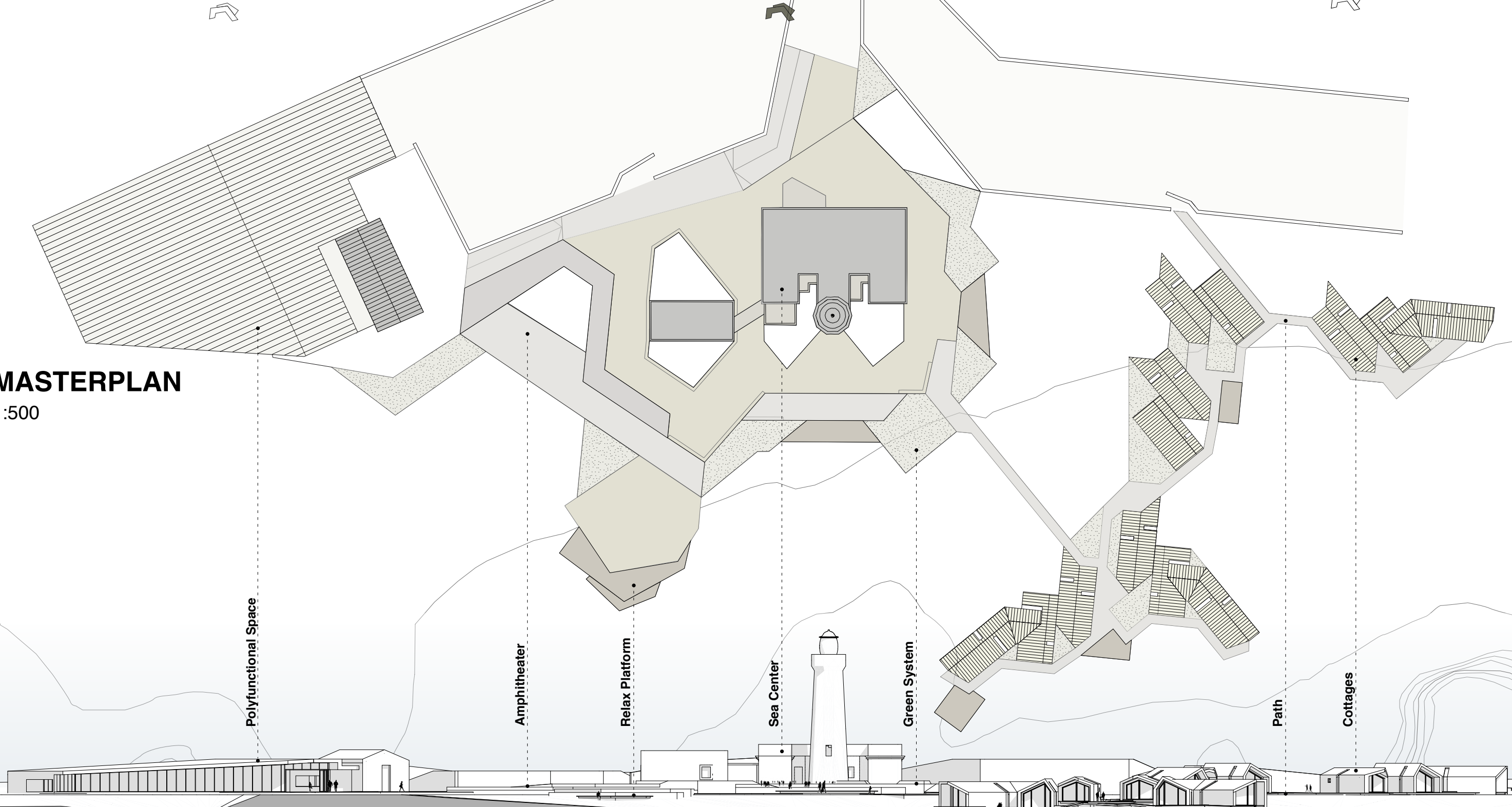


GREEN AND CONNECTIONS

- Path
- Green System
- Parking



MASTERPLAN
1:500



Polyfunctional Space

Amphitheater

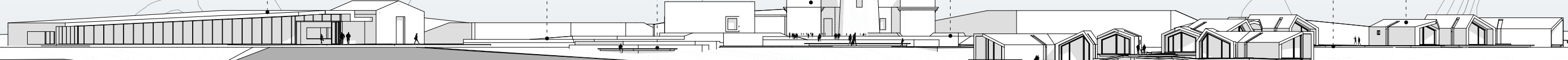
Relax Platform

Sea Center

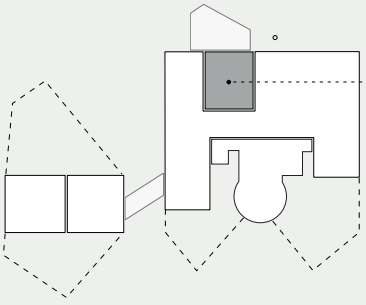
Green System

Path

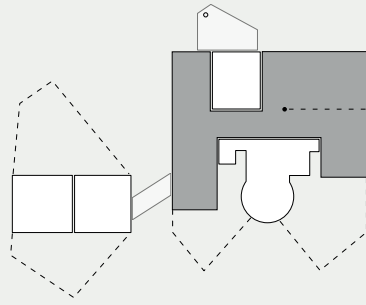
Cottages



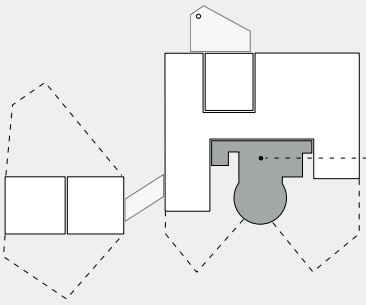
SEA CENTER



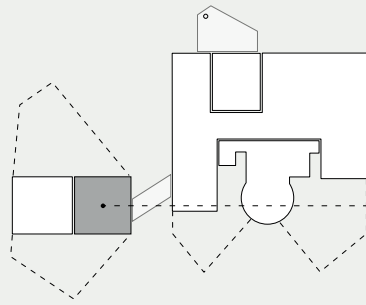
RECEPTION/ INFO POINT
MQ 20
Visitors welcome centre providing services for museums and hotel patrons



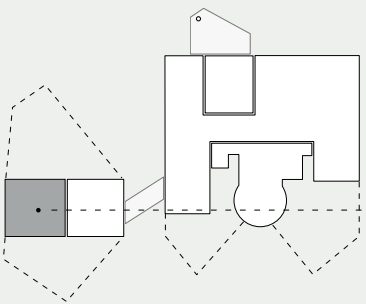
MUSEUM
MQ 185
Interactive and multipurpose exhibition space leading the visitors through the marine life.



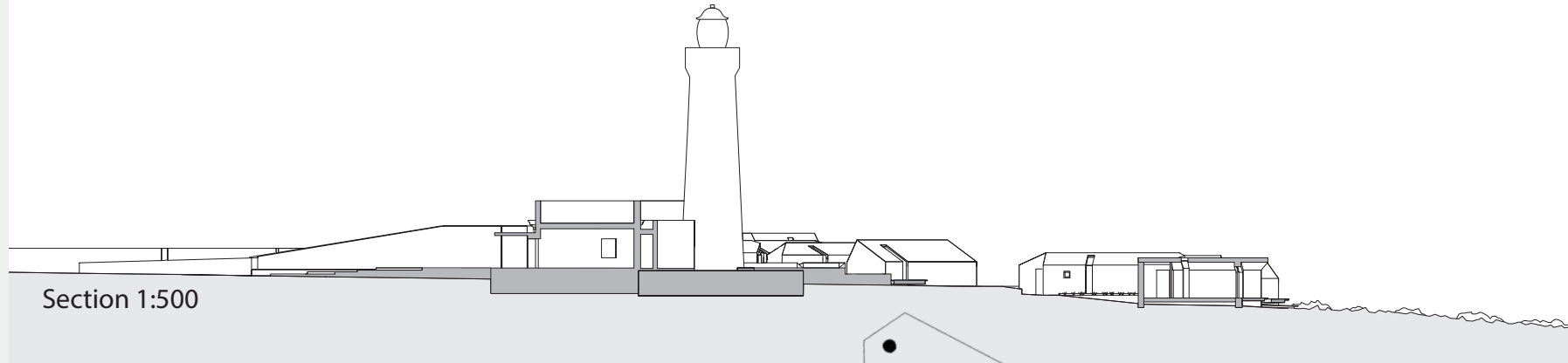
FARO
MQ 48
Exclusive access to land and facility belonging to the Navy or coast guard.



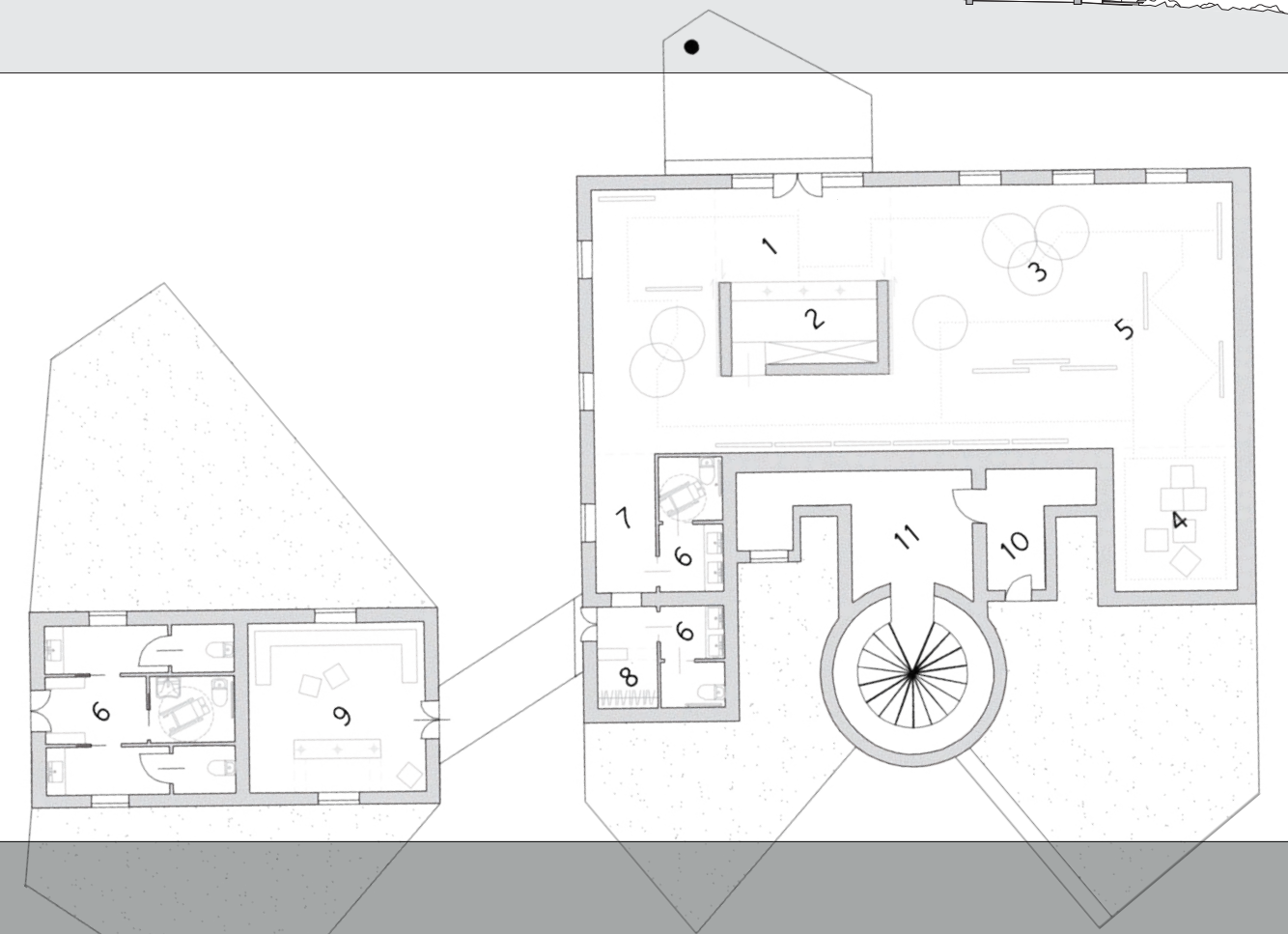
BOOK SHOP
MQ 28



SERVIZI IGIENICI
MQ 28

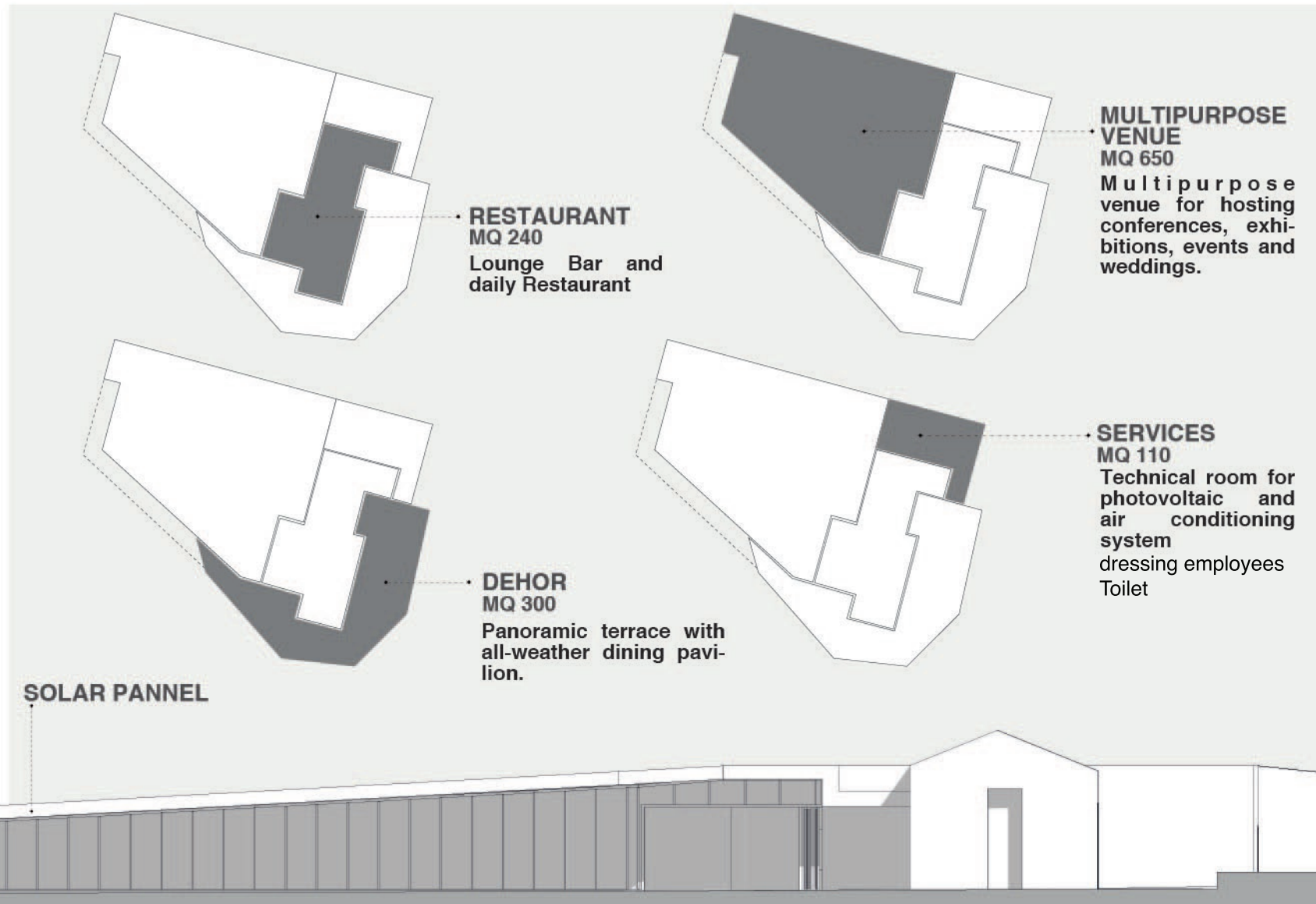
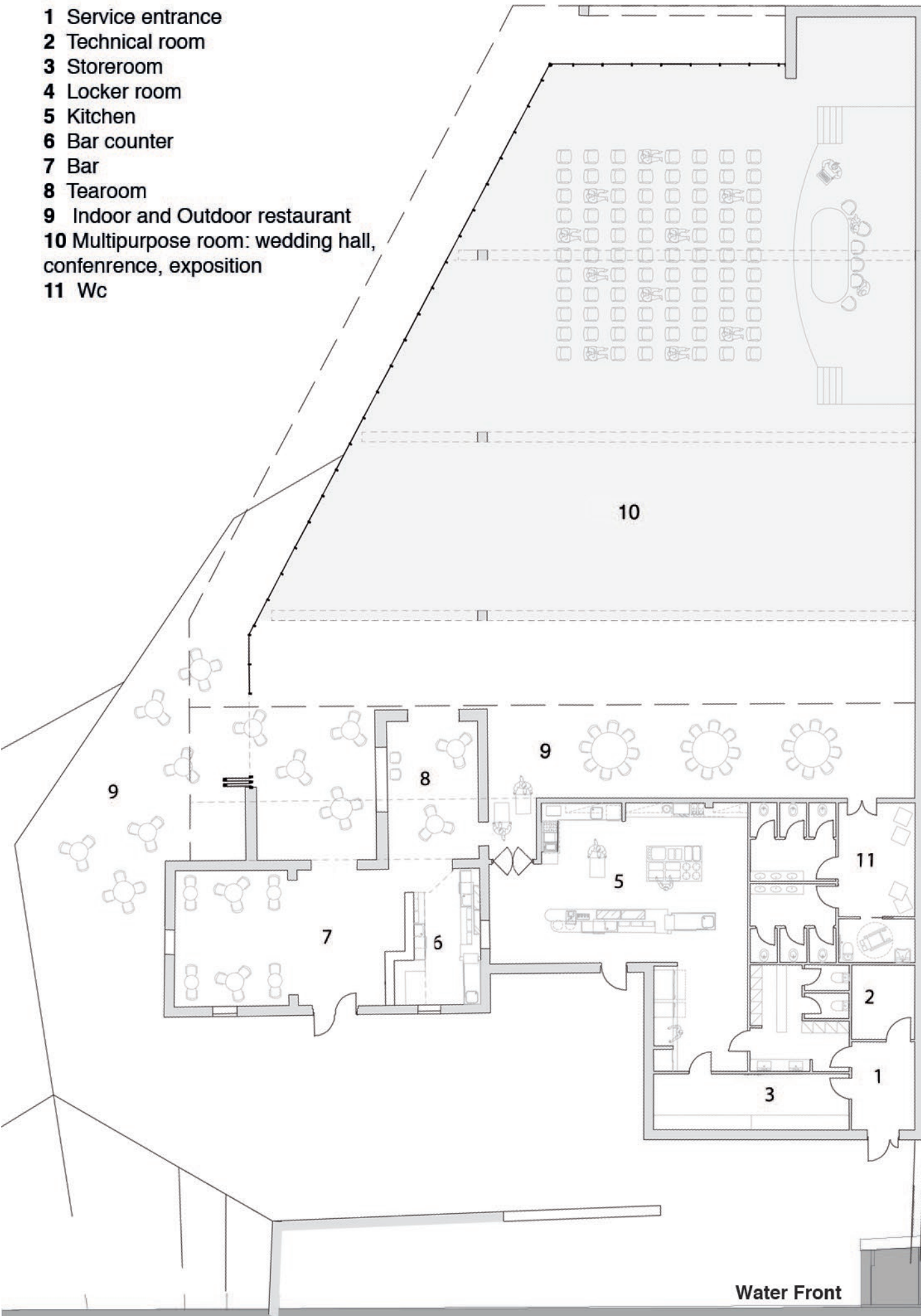


- 1 Lobby
- 2 Desk/Reception
- 3 Sound equipment
- 4 Room videos
- 5 Multimedia tour
- 6 Wc
- 7 Hallway
- 8 Coat check
- 9 Bookshop/infopoint
- 10 Entry lighthouse
- 11 Lighthouse



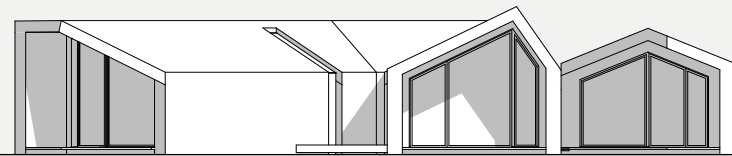
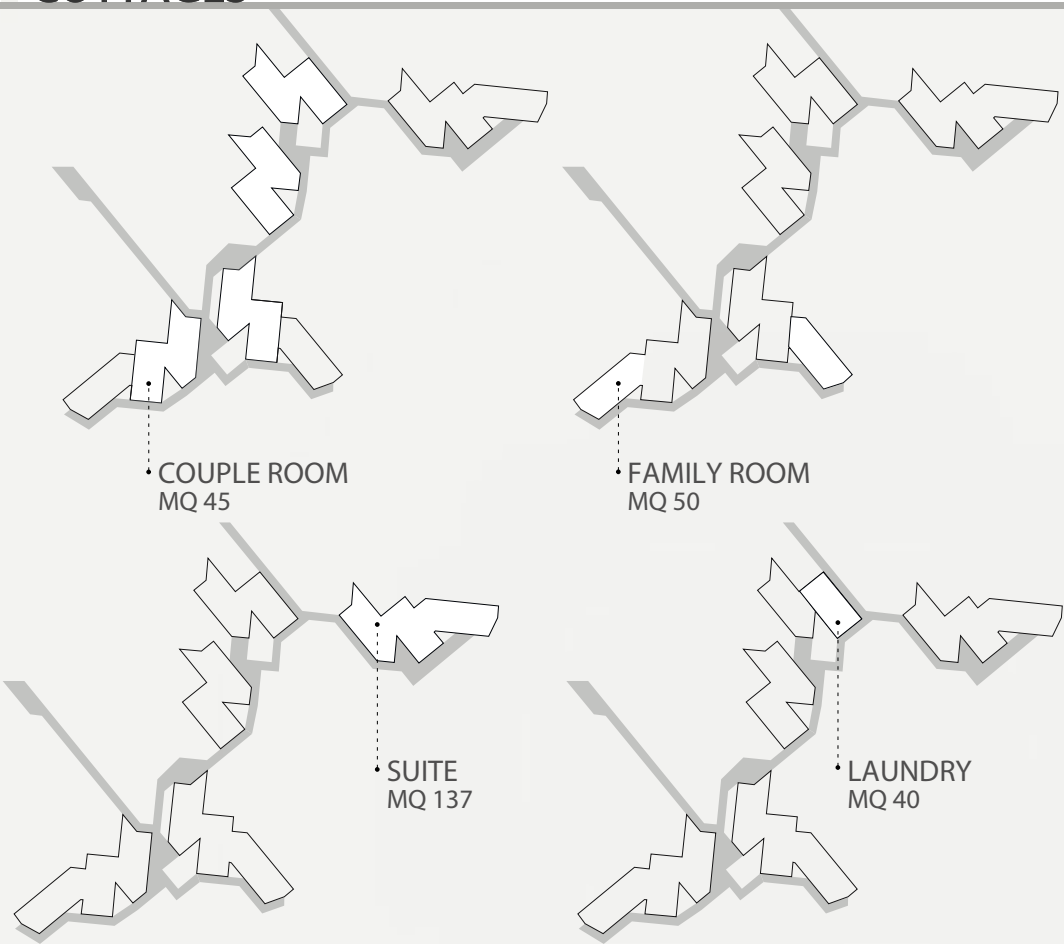
RESTAURANT / BAR / POLYFUNCTIONAL

- 1 Service entrance
- 2 Technical room
- 3 Storeroom
- 4 Locker room
- 5 Kitchen
- 6 Bar counter
- 7 Bar
- 8 Tearoom
- 9 Indoor and Outdoor restaurant
- 10 Multipurpose room: wedding hall, conference, exposition
- 11 Wc

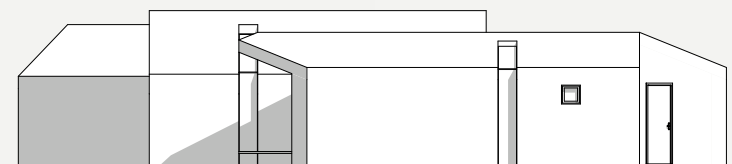


Water Front

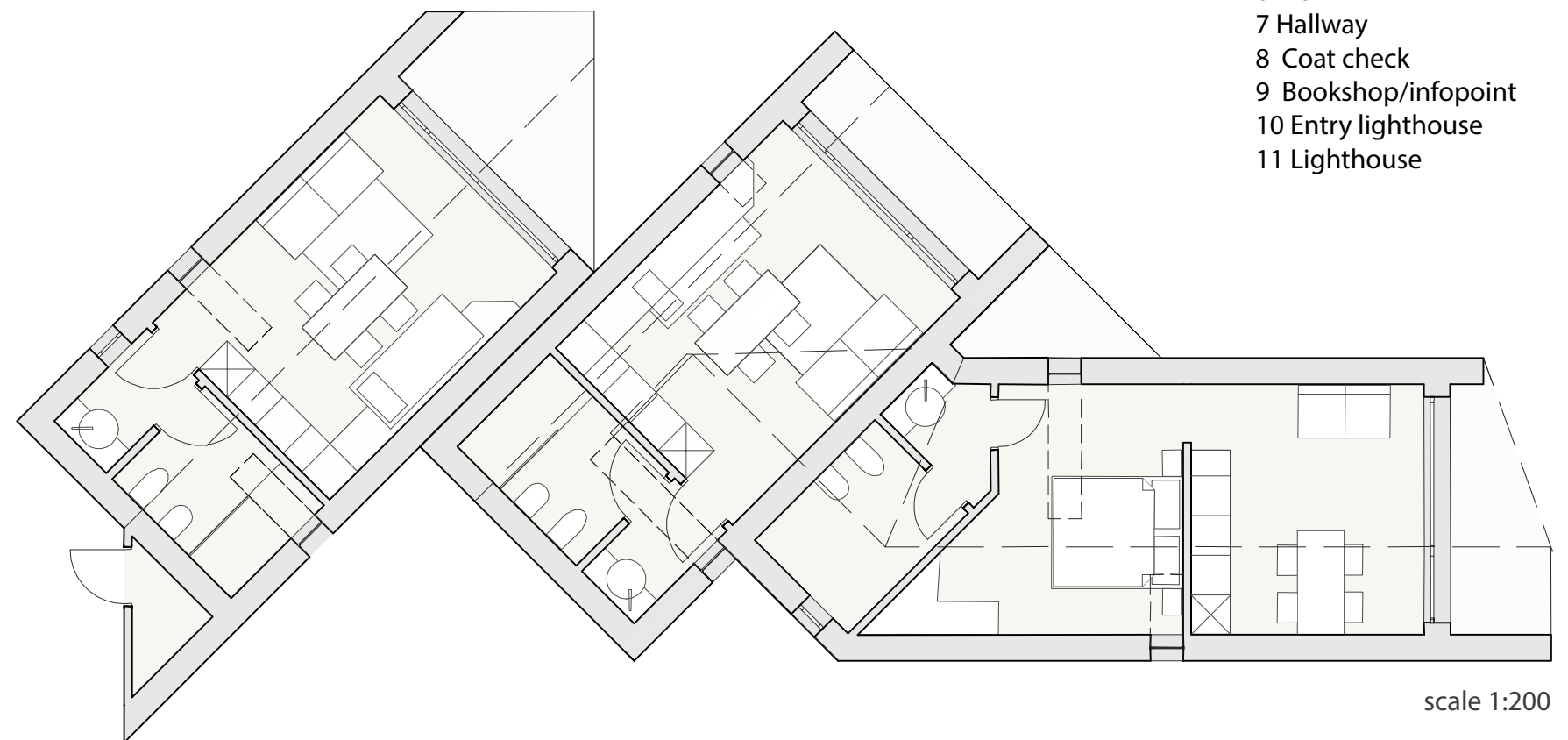
COTTAGES



Water Front



- 1 Lobby
- 2 Desk/Reception
- 3 Sound equipment
- 4 Room videos
- 5 Multimedia tour
- 6 Wc
- 7 Hallway
- 8 Coat check
- 9 Bookshop/infopoint
- 10 Entry lighthouse
- 11 Lighthouse



scale 1:200