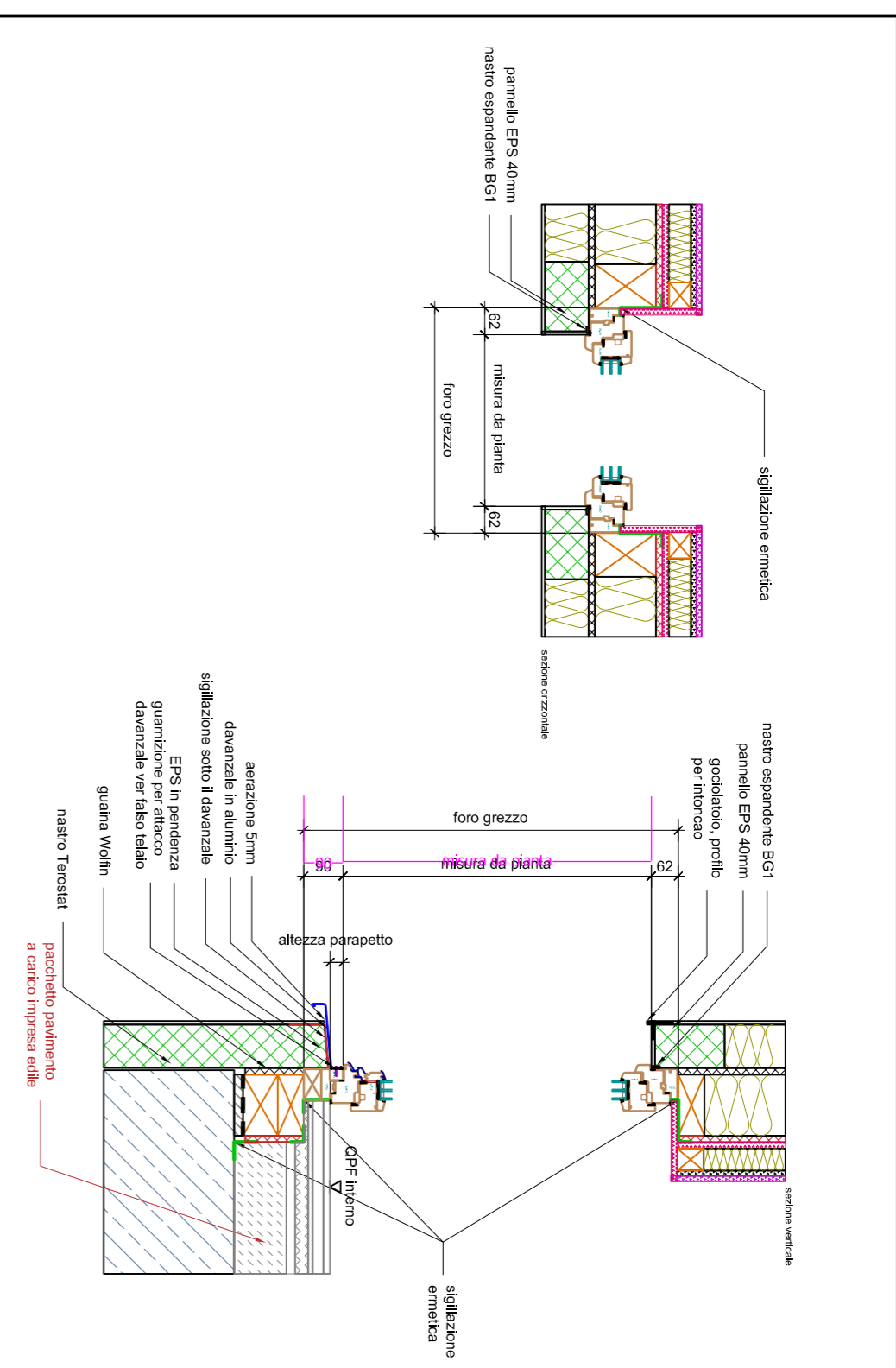


## Dettagli

finestra a terra / balia senza oscuramento e senza parapetto / verso facciata - F - 3-6-7-8-9-10-11-12-15-16-22-25-28-30-31-32-33-34-37-39-42

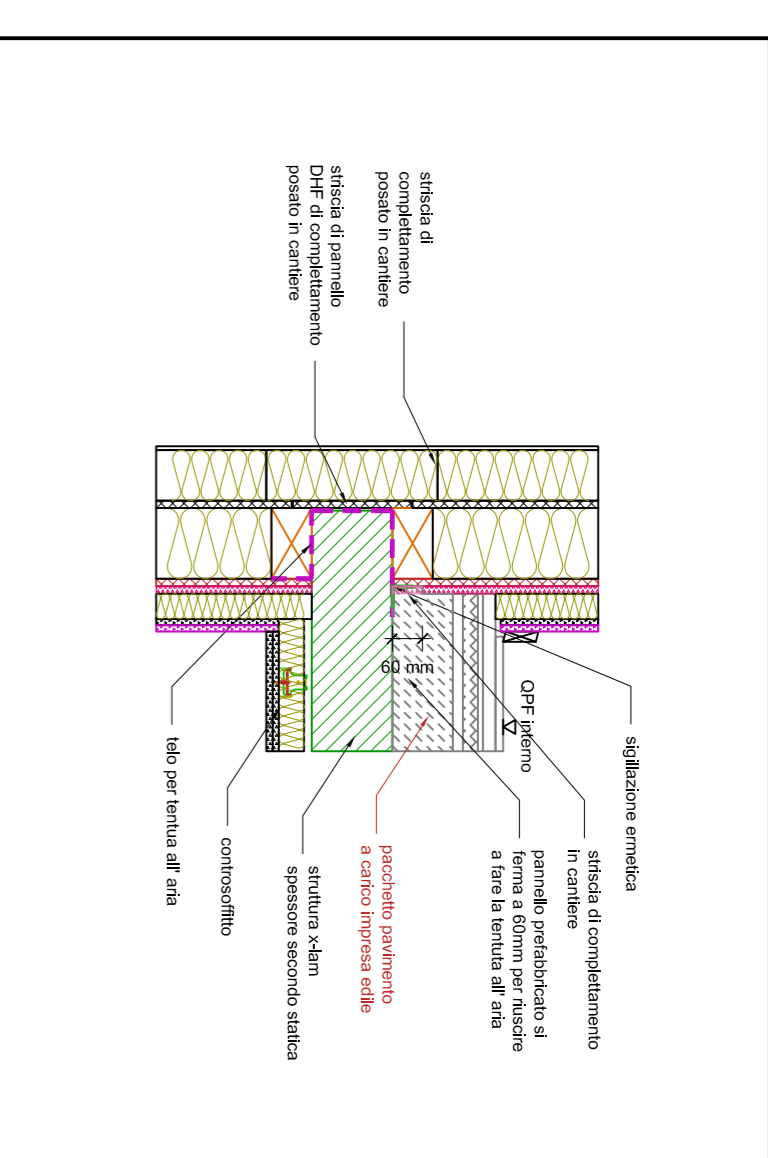
colore: 110



## Dettagli

giunto parete piano terra - parete piano primo

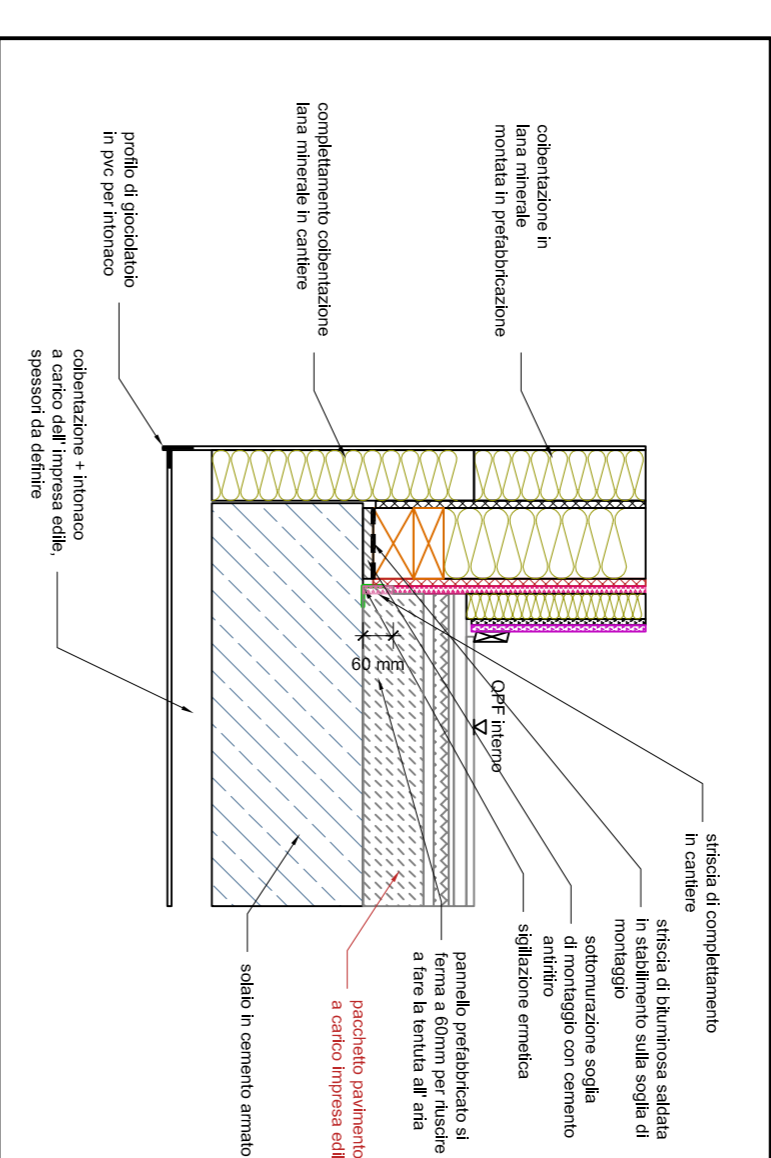
colore: 110



## Dettagli

giunto scudo piano terra - parete piano primo

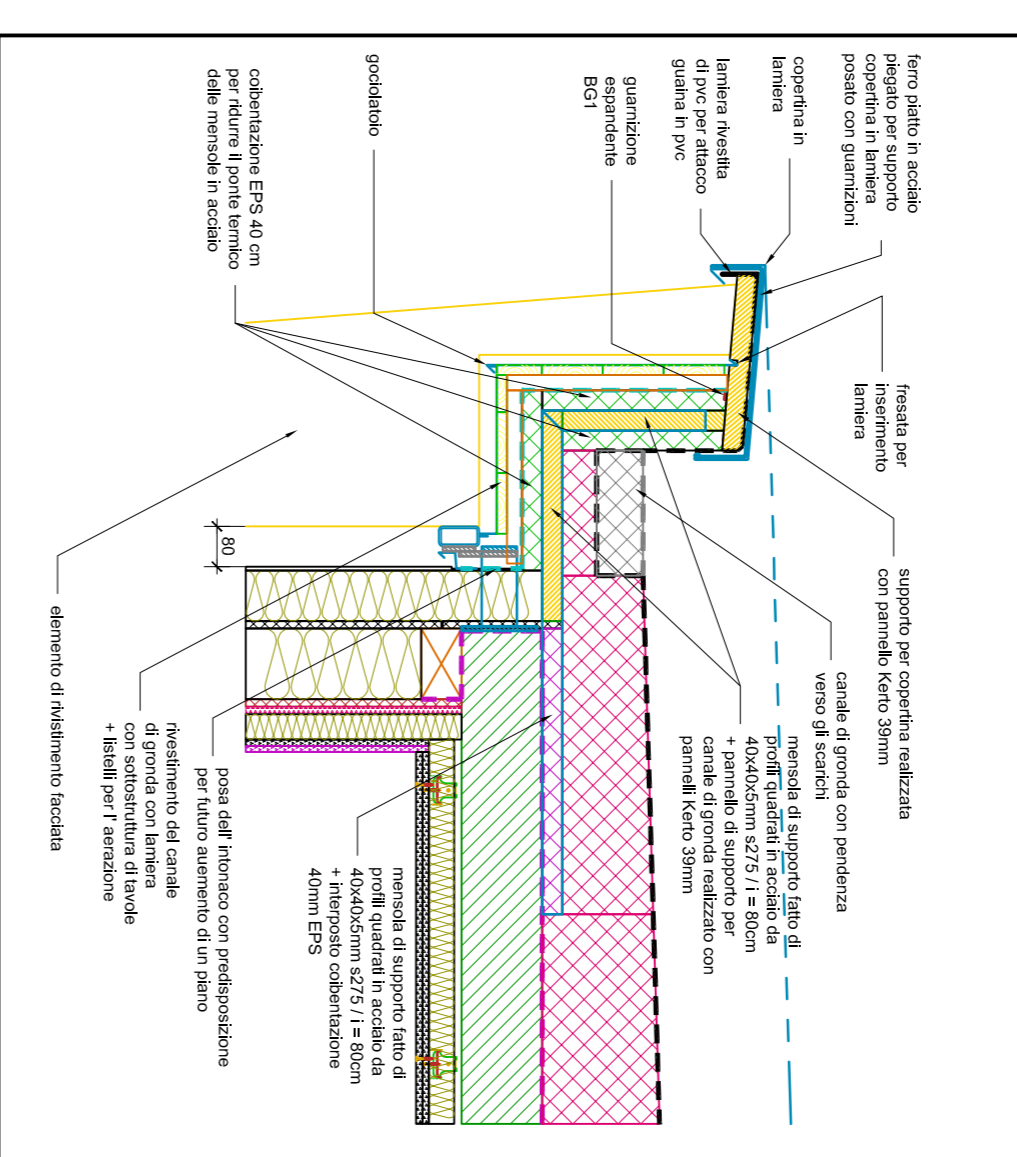
colore: 110



## Dettagli

dettaglio grondaia

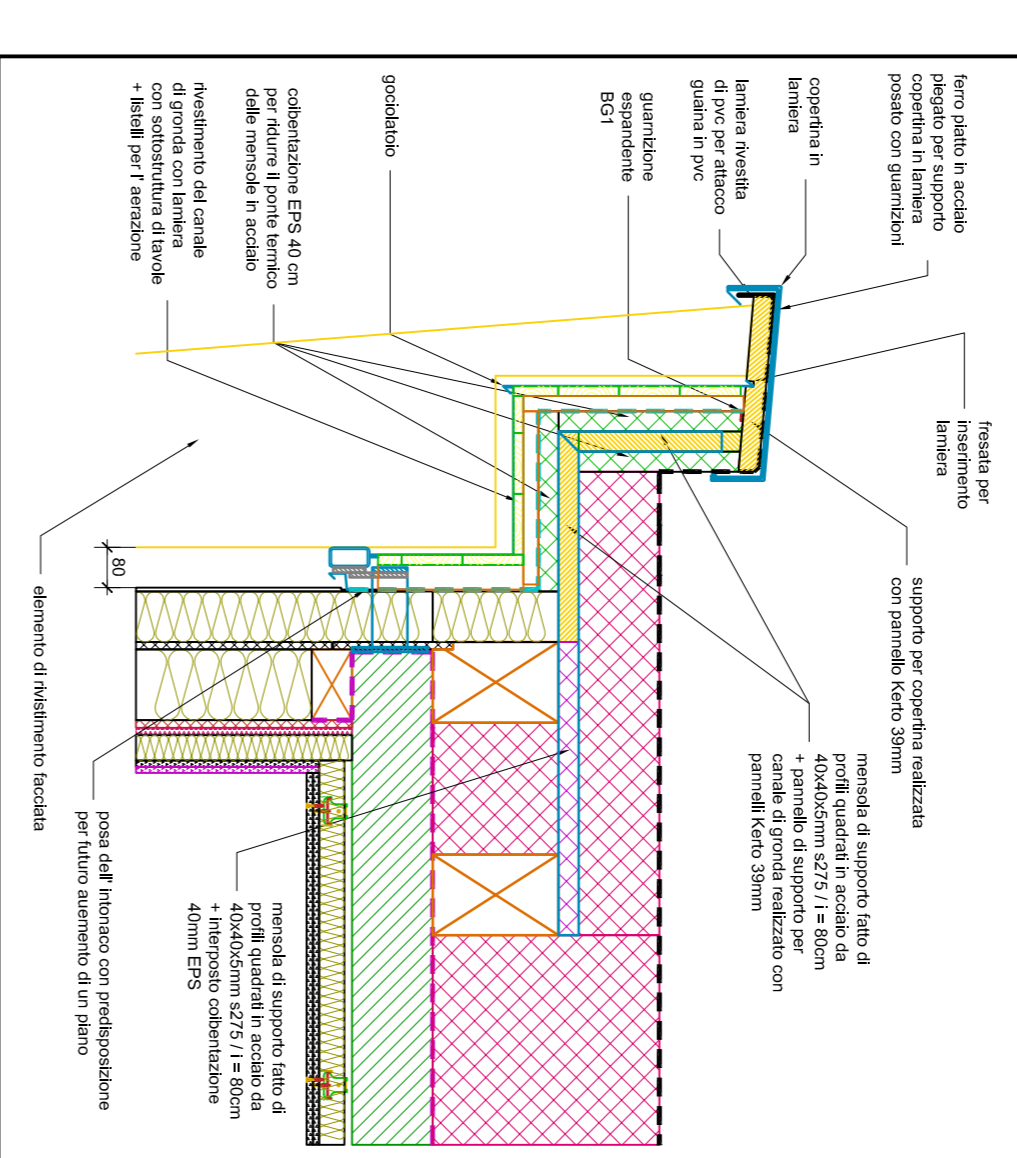
colore: 110



## Dettagli

dettaglio fronte spazio

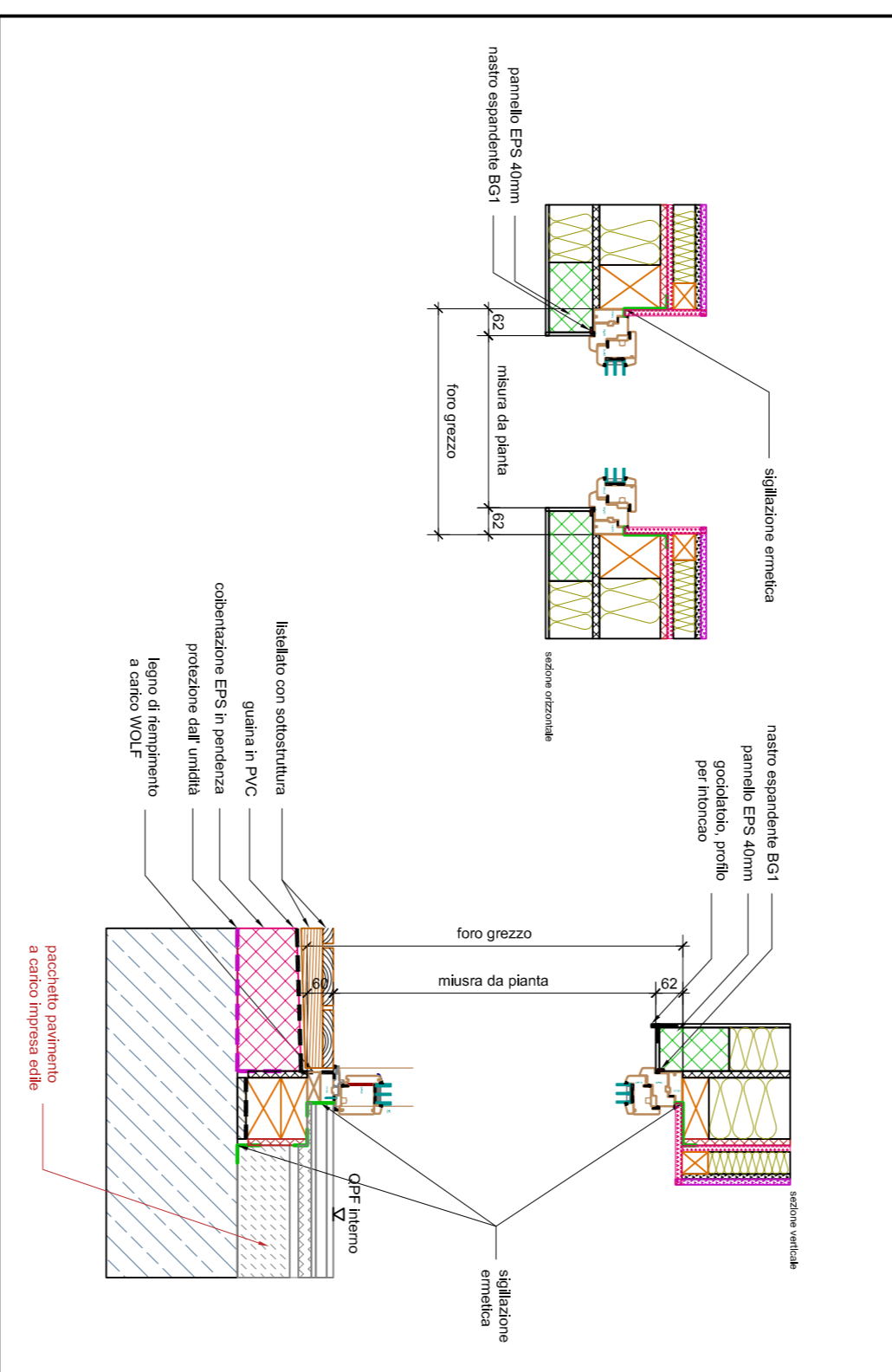
colore: 110



## Dettagli

porta finestra alta / balia senza oscuramento / verso la loggia - F - 2-5-13-14-16-20-21-24-27-35-36-40-46-57-58-62-65

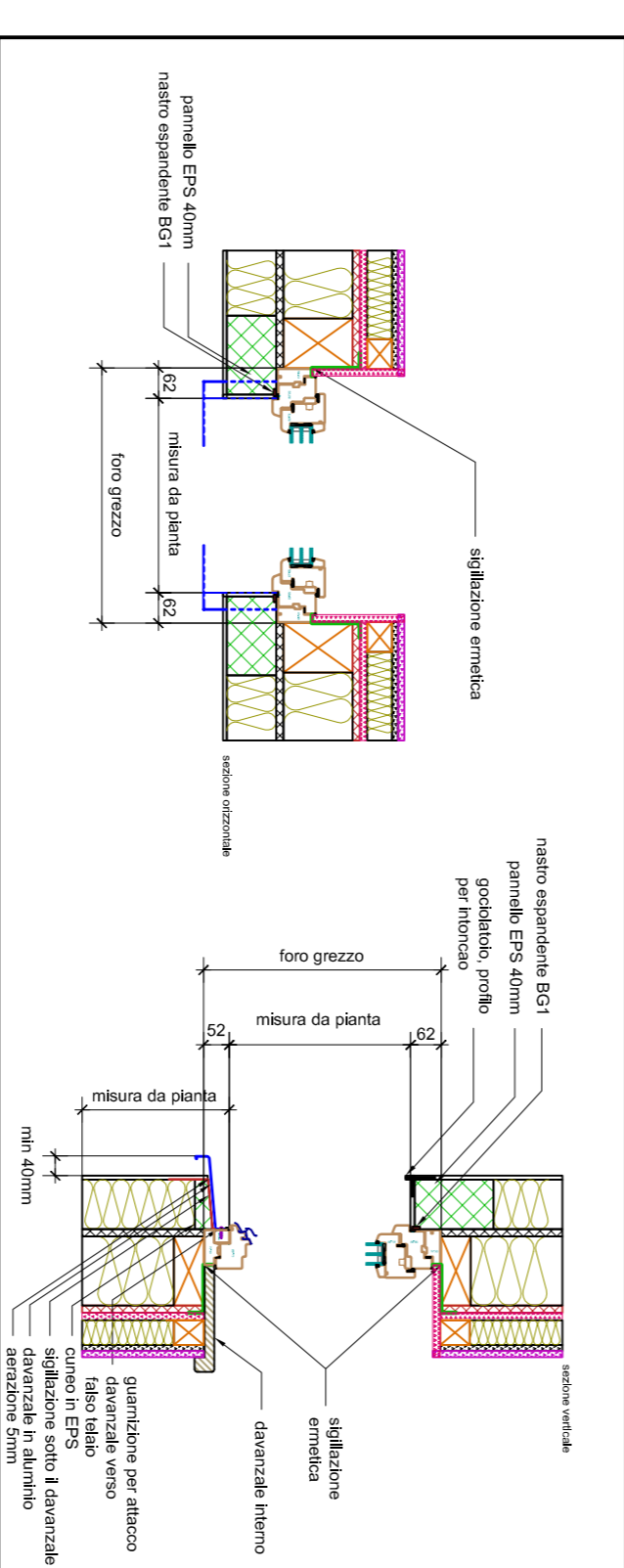
colore: 110



## Dettagli

finestra alta / balia senza oscuramento - F - 17-39-61

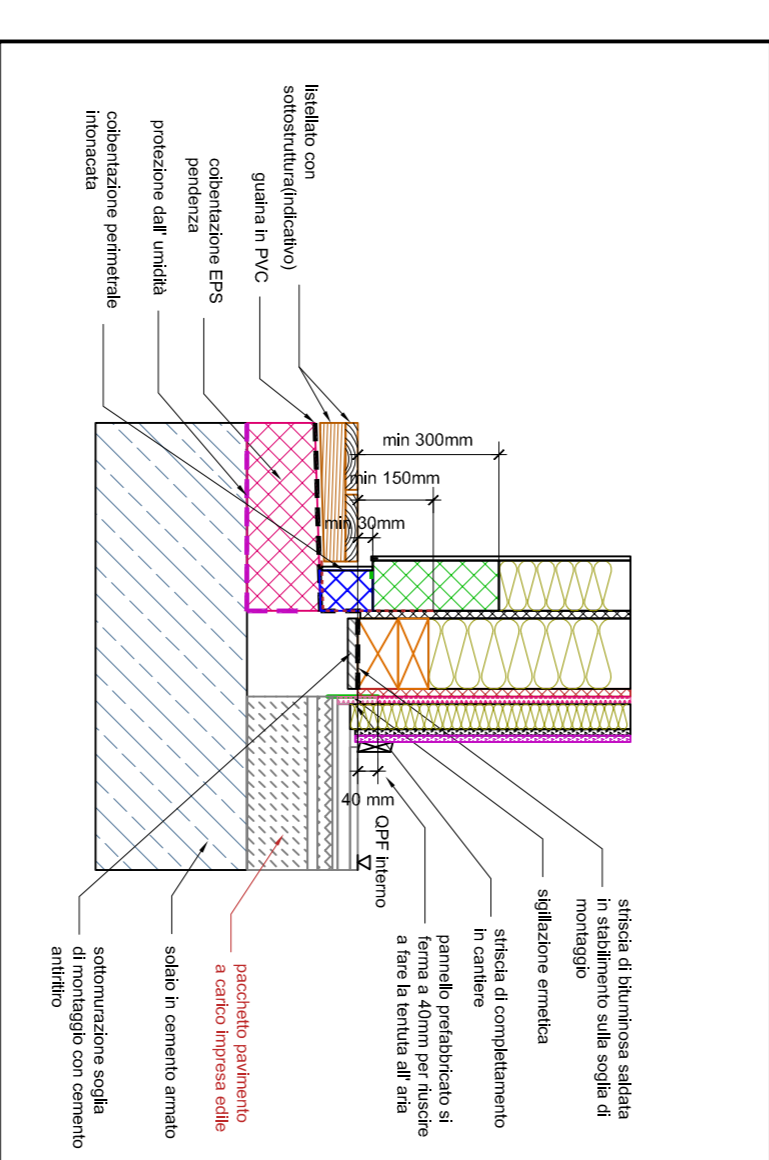
colore: 110



## Dettagli

dettaglio zoccolo

colore: 110



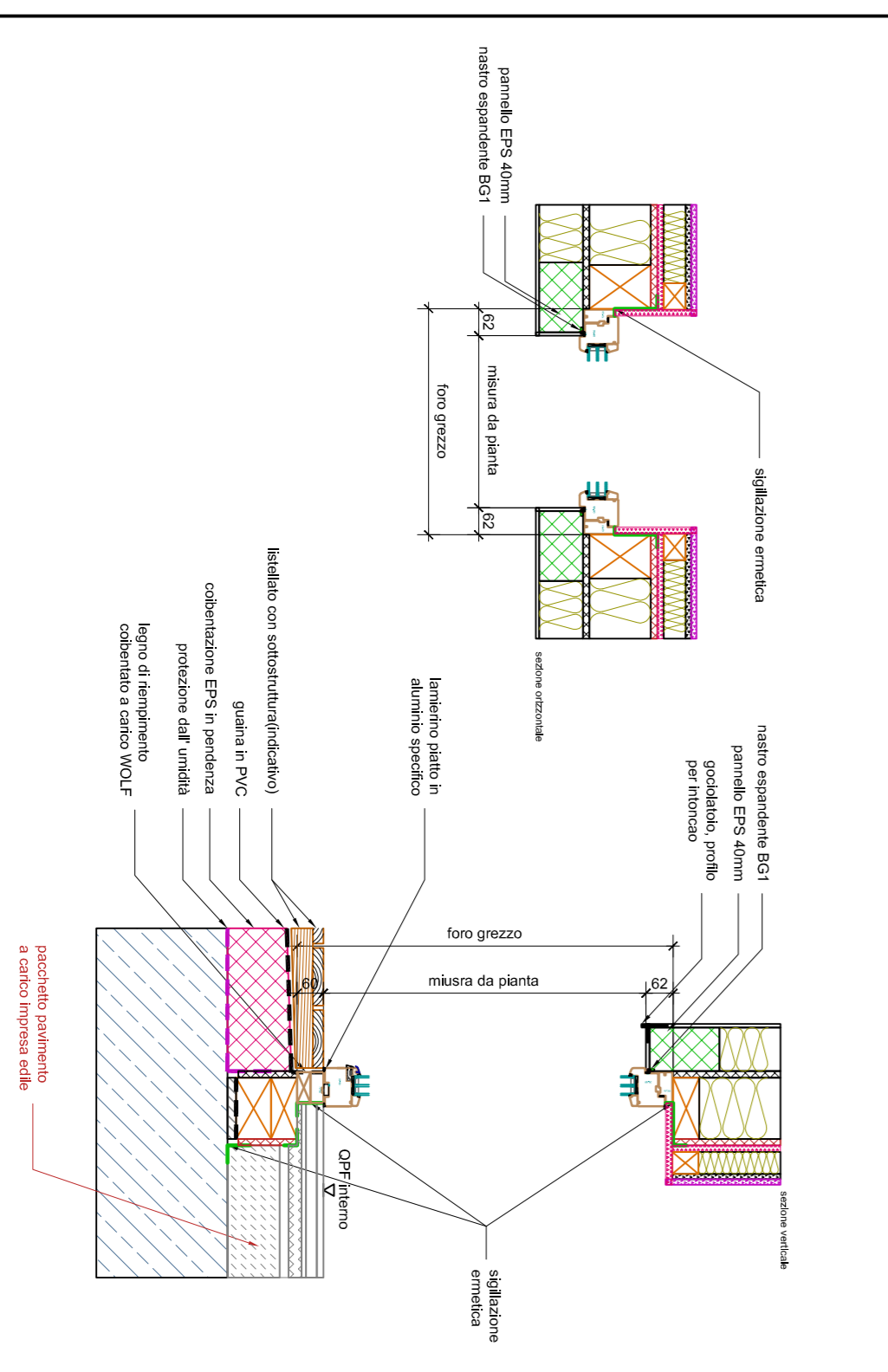
## Ausführungsplan

3D

## Dettagli

finestra fissa senza oscuramento e senza parapetto / verso la loggia - F - 1-4-19-23-26-41-45-48-63

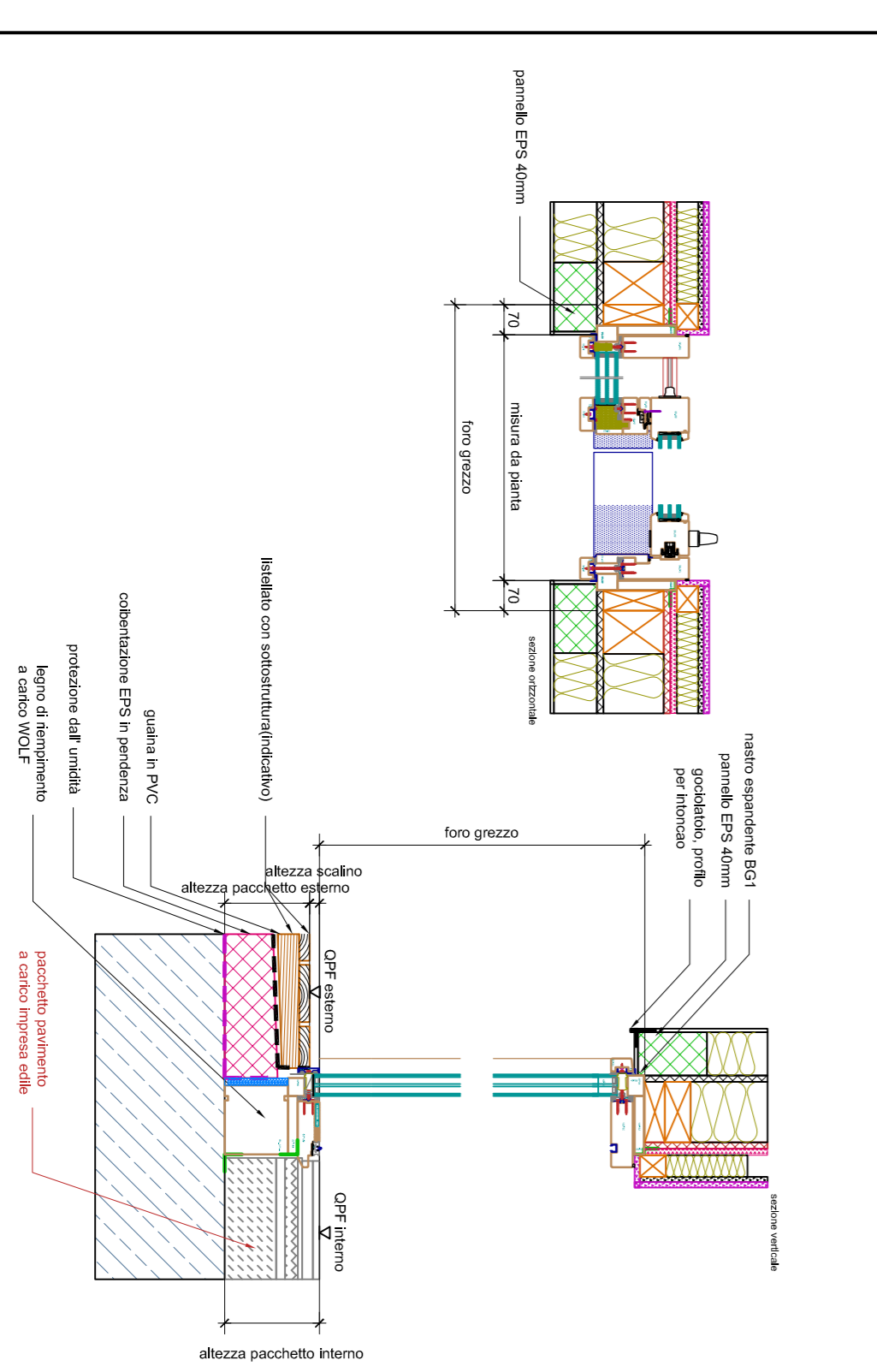
colore: 110



## Dettagli

finestra scorrevole senza oscuramento - F - 66

colore: 110



Kunde	Roland Demetz
Committer	Wolkenstein / Gröden
Bauort	Bauort
Baufort	Baufort
Bauprojekt	14-1244, Carni Eden
Planinhalt	Details
Zeichnung	Detail
Titel	Detail
Zeichner	shh
Gezeichnet von	shh
Gezeichnet am	10.06.2015
Gezeichnet durch	shh
Gezeichnet für	AD

**LIGNOLP**

Logo and contact information for LIGNOLP, including website and phone number.