

Press release



Chilestieg, Rümlang, Switzerland
baumschlager eberle, archphoto, inc © baumschlager eberle

Striking appearance in lush greenery

“Chilestieg” | Rümlang, Switzerland

Paris, April 2016 – The residential development at Chilestieg in Rümlang Switzerland looks like a set of shimmering crystals embedded in lush green surroundings. The planning approach adopted by baumschlager eberle reveals a sensitive response to the structures in the vicinity. The hexagonal layout of the buildings and the façades of galvanized sheet steel give the three multi-family dwellings a striking appearance on a site bounded by mature trees. The three or four-storey dwellings comprise a total of 41 apartments.

An extensive stock of mature trees forms a green envelope around the land and buildings at Chilestieg in Rümlang. The 6,500 square-metre site is bounded to the north by Chilestieg and to the east by Glattalstraße. The low-density residential development baumschlager eberle have planned here reveals a sensitive response to the texture and arrangement of the surroundings. The location and orientation of the three buildings with their three or four storeys take due account of the structures in the vicinity. The buildings are carefully embedded in the gentle, flowing landscape around the site, and the generous spacing between them underlines the park-like character of the development.

The hexagonal layout of the buildings with their 1,600 square metres of building area and shimmering facades give the multi-family dwellings a striking appearance. Their alignment relates to the streets and surrounding structures. Three-millimetre-thick, galvanized sheet steel has been used for the rear-ventilated facade system. In the words of Sabrina Contratto, manager of the baumschlager eberle office in Zurich: "To enhance the hexagonal shape of the building a material was chosen for the facade that brings out the edges and corners of the construction in a precise and clearly recognizable manner." The metallic surface captures and reflects the light and surrounding greenery, thus reinforcing the impression of polished surfaces. The joint pattern of the steel sheets has been made as large as possible and is geared to the shapes of the window openings.

Forty-one apartments with 3.5, 4.5 or 5.5 rooms have been accommodated in 4,300 square metres of net floor space in three multi-family dwellings. Most of the apartments face south and west. Each apartment has ceiling-high loggia windows in the living area to ensure maximum daylight.

The ground-floor apartments have gardens in front for the tenants' private use. Sabrina Contratto: "The greenery of varying heights planted between the buildings and the trees on the edges of the site underlines the high quality of the open space design." The hedges of different thickness and flowering shrubs provide a natural boundary between the public and semi-public areas and the private spaces.

Facts & Figures

Adress Rümlang, CH	Planning baumschlager eberle Zurich, CH	Landscape Studio Vulkan Landschaftsarchitekten Zurich, CH	Site Area 6.500 m ²	Commencement Of Planing 8/2011
Client Immobilien Compagnoni AG Zurich, CH	Project Architect Thies Böke	Structure Jäger Partner AG Zurich, CH	Area Of Building 1.600 m ²	Commencement Of Work 4/2013
	Photography Eduard Hueber Arch Photo Inc. Brooklyn, USA	Building Equipment Roman Böni GmbH Oberentfelden, CH	Gross Floor Area 6.200 m ²	Completion 10/2014
		Building Physics Steigmeier Akustik+ Bauphysik GmbH Baden, CH	Net Floor Area 4.300 m ²	
		Electrical Engineering Elektro Compagnoni AG Zurich, CH	Building Volume 17.800 m ²	



baumschlager eberle

baumschlager eberle

With over 400 completed buildings, baumschlager eberle counts towards one of the successful architecture firms in an international context. The quality of its work since the founding of the company in 1985 has won it notable recognition and numerous awards. The fact that the work of baumschlager eberle is so widely accepted results from a concept that is able to combine the specific demands of a building with the user's wishes as well as cultural sustainability. The teams working in the ten branch offices in Europe and Asia have a special architectural responsibility: for the client, the regional context and the social environment. At the same time enough scope is left for realizing aesthetic visions. This complete approach is the basis for confidence in baumschlager eberle's architecture and the flexible range of services they offer whenever and wherever necessary with the aim of constructing sustainable and thus economically efficient buildings.

baumschlager eberle

Press and communication

Claudia Schwind, Head of communications

Phone +33 1 40 29 88 06, Fax +33 1 40 29 42 15

Email c.schwind@be-architects.fr

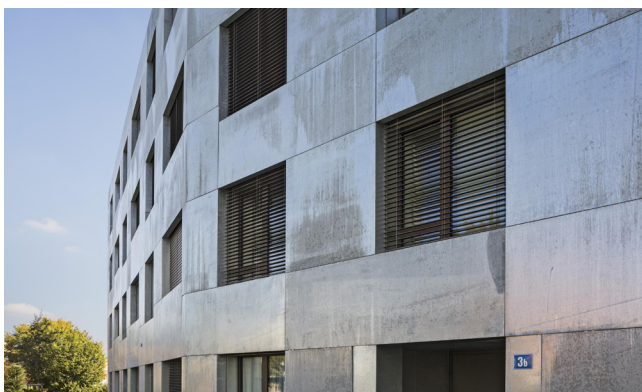
Anne Paillard, Press

a.paillard@be-architects.fr

7, rue Debelleye, 75003 Paris, France

www.baumschlager-eberle.com

Images



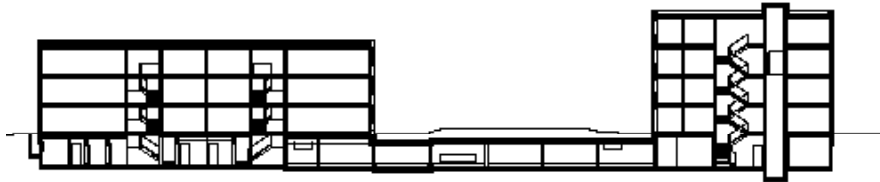
Plans, cuts



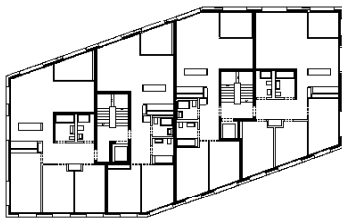
figure ground plan 1:7500



site plan 1:2500



section 1:750



storey floor plan 1:750