

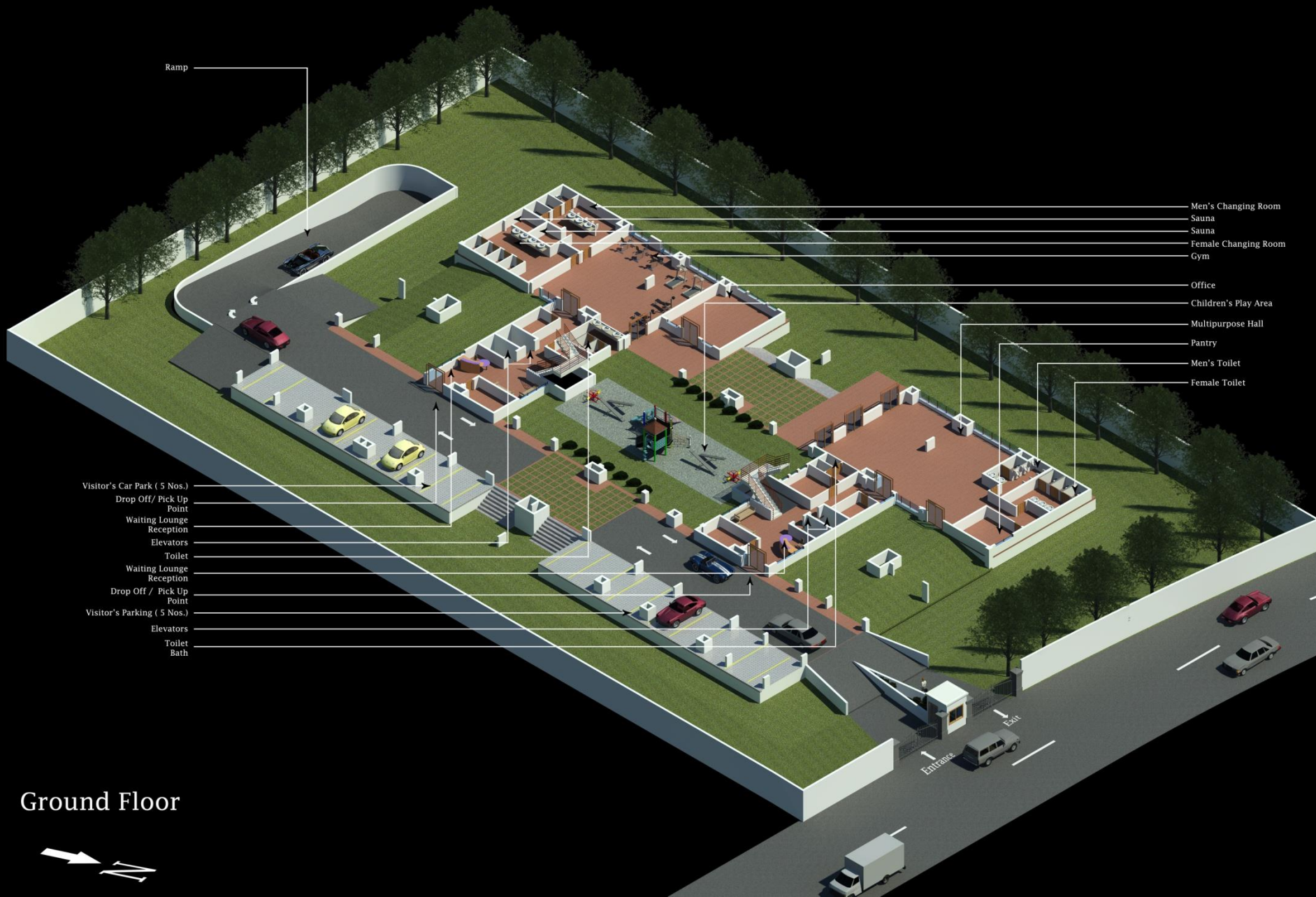
# Brochure Works for Skyvillas,Jaipur

Sandeep Kumar For KGA,Baroda









Ramp

- Men's Changing Room
- Sauna
- Sauna
- Female Changing Room
- Gym
- Office
- Children's Play Area
- Multipurpose Hall
- Pantry
- Men's Toilet
- Female Toilet

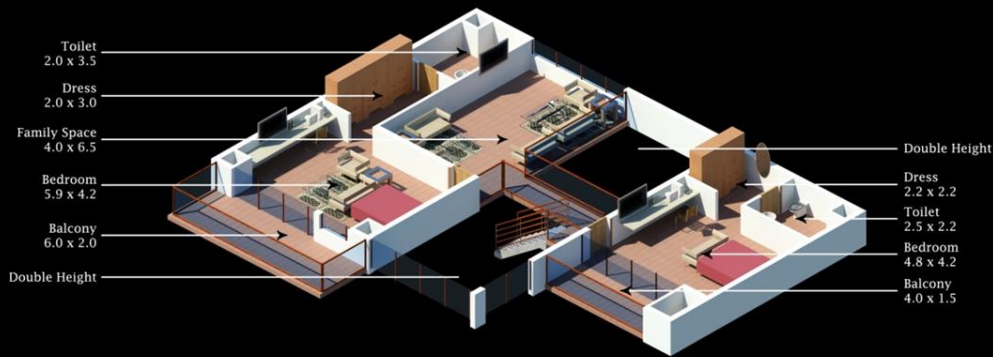
- Visitor's Car Park ( 5 Nos.)
- Drop Off / Pick Up Point
- Waiting Lounge
- Reception
- Elevators
- Toilet
- Waiting Lounge
- Reception
- Drop Off / Pick Up Point
- Visitor's Parking ( 5 Nos.)
- Elevators
- Toilet
- Bath

Entrance

Exit

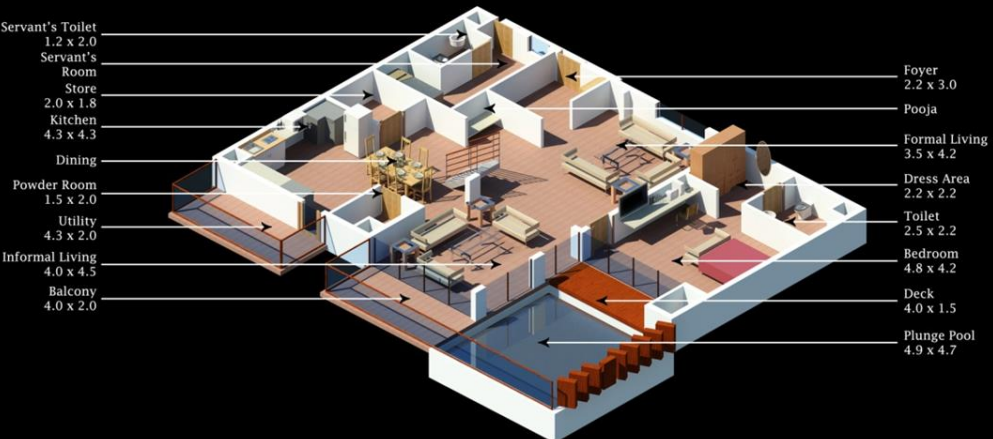
# Ground Floor





- Toilet  
2.0 x 3.5
- Dress  
2.0 x 3.0
- Family Space  
4.0 x 6.5
- Bedroom  
5.9 x 4.2
- Balcony  
6.0 x 2.0
- Double Height

- Double Height
- Dress  
2.2 x 2.2
- Toilet  
2.5 x 2.2
- Bedroom  
4.8 x 4.2
- Balcony  
4.0 x 1.5

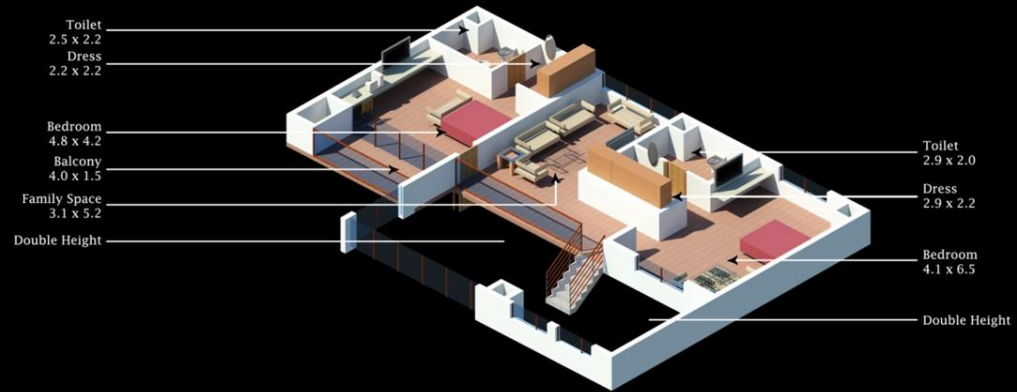


- Servant's Toilet  
1.2 x 2.0
- Servant's Room
- Store
- Store  
2.0 x 1.8
- Kitchen  
4.3 x 4.3
- Dining
- Powder Room  
1.5 x 2.0
- Utility  
4.3 x 2.0
- Informal Living  
4.0 x 4.5
- Balcony  
4.0 x 2.0

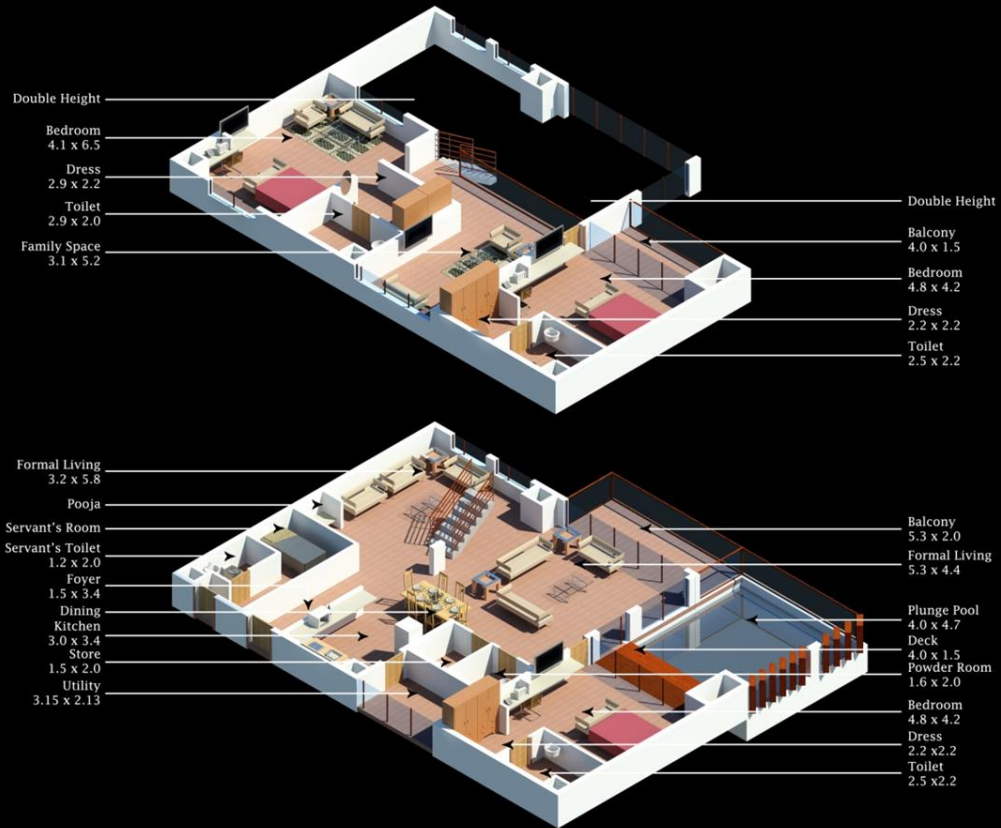
- Foyer  
2.2 x 3.0
- Pooja
- Formal Living  
3.5 x 4.2
- Dress Area  
2.2 x 2.2
- Toilet  
2.5 x 2.2
- Bedroom  
4.8 x 4.2
- Deck  
4.0 x 1.5
- Plunge Pool  
4.9 x 4.7



**Type 1**  
**3 BHK PLUNGE POOL**  
 Super Built up Area - 436 sqm



**Type 2**  
**3 BHK PLUNGE POOL**  
 Super Built up Area - 421 sqm



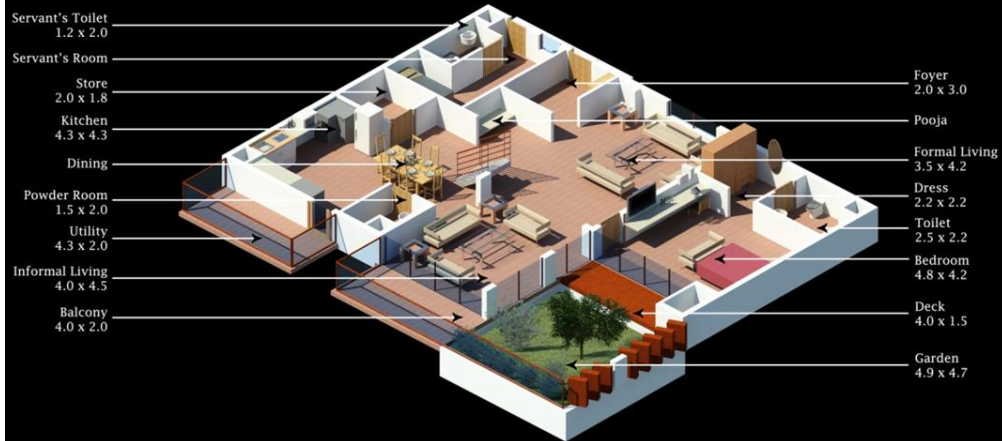
**Type 3**  
**3 BHK PLUNGE POOL**  
 Super Built up Area - 421 sqm



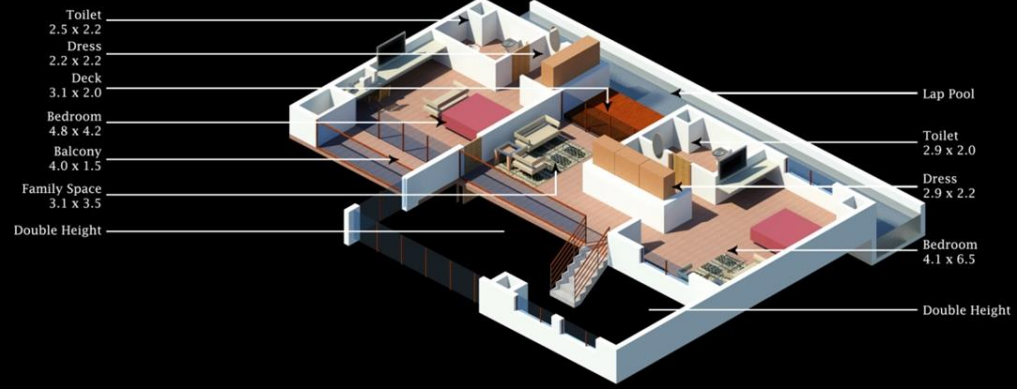


**Type 4**  
**3 BHK PLUNGE POOL**  
 Super Built up Area - 436 sqm

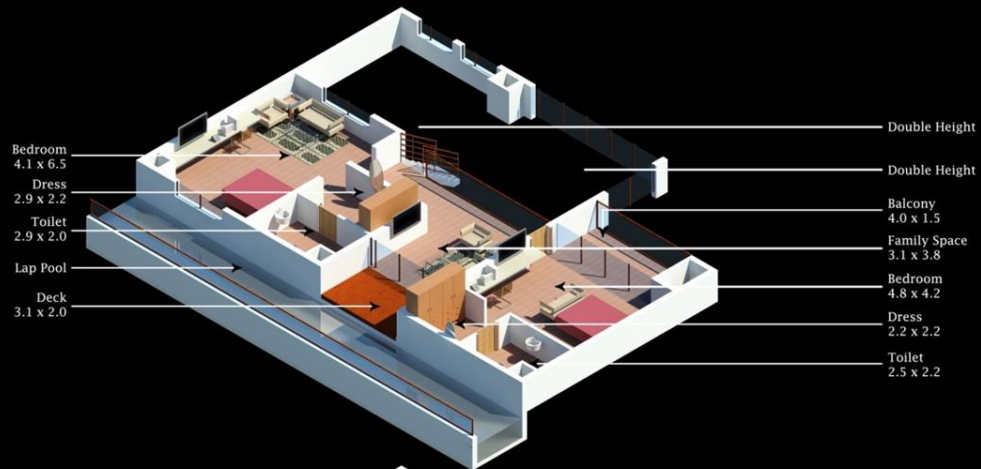




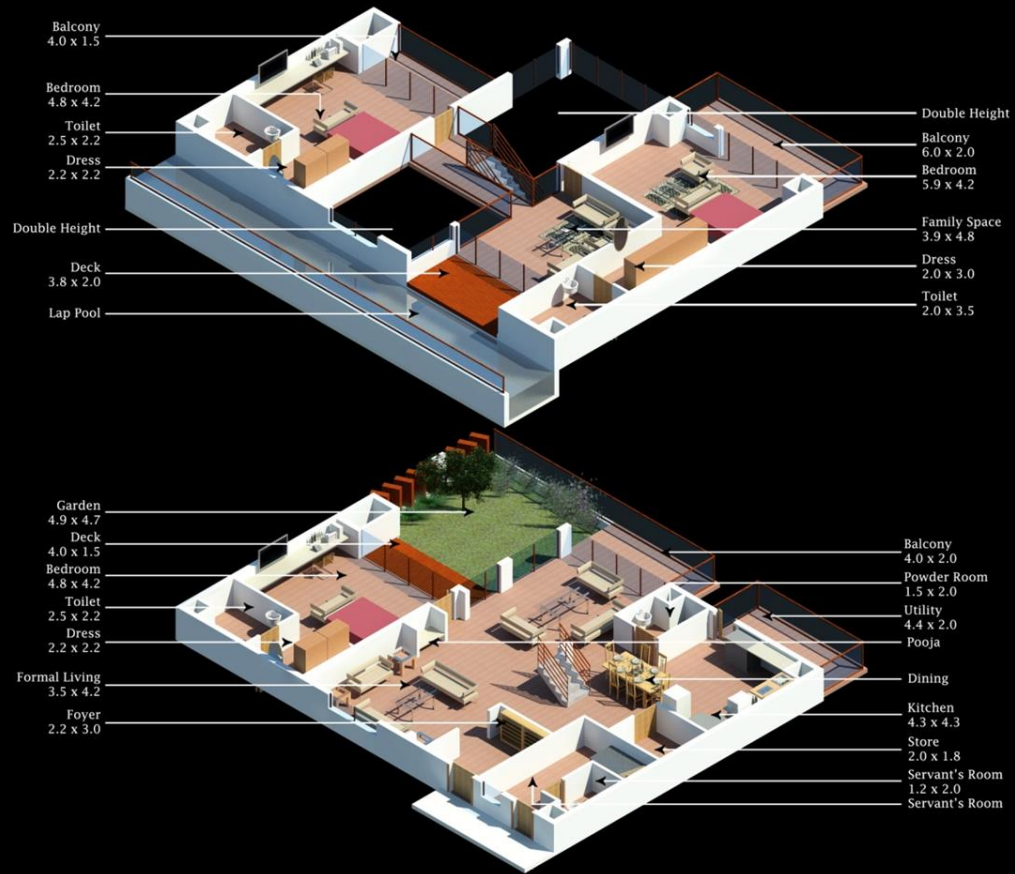
**Type 5**  
**3 BHK GARDEN + LAP POOL**  
 Super Built up Area - 472 sqm



**Type 6**  
**3 BHK GARDEN + LAP POOL**  
 Super Built up Area - 458 sqm

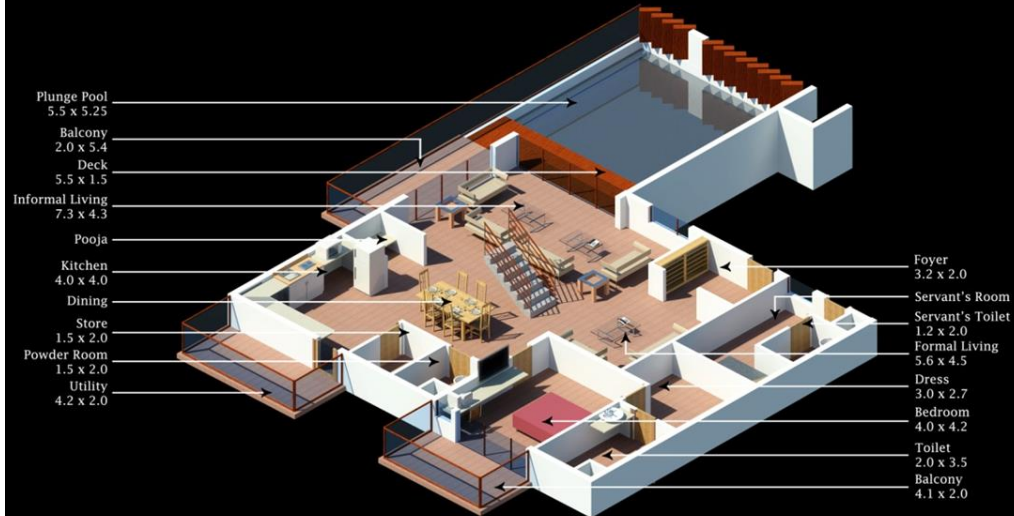


**Type 7**  
**3 BHK GARDEN + LAP POOL**  
 Super Built up Area - 458 sqm

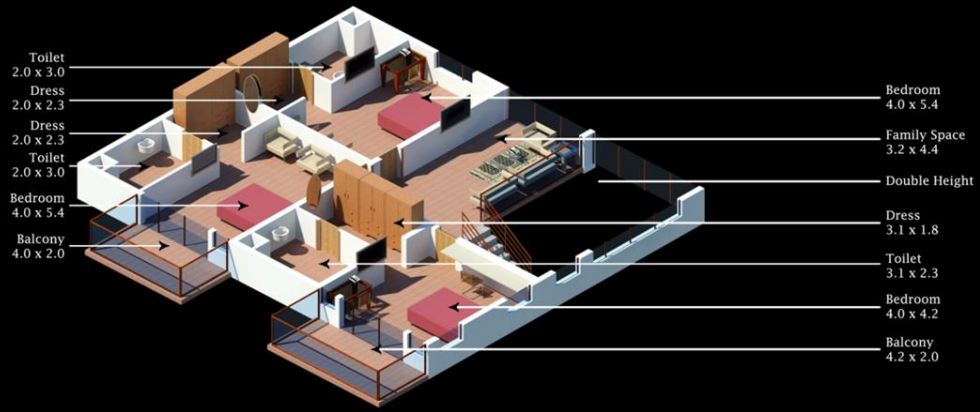


**Type 8**  
**3 BHK GARDEN + LAP POOL**  
 Super Built up Area - 472 sqm



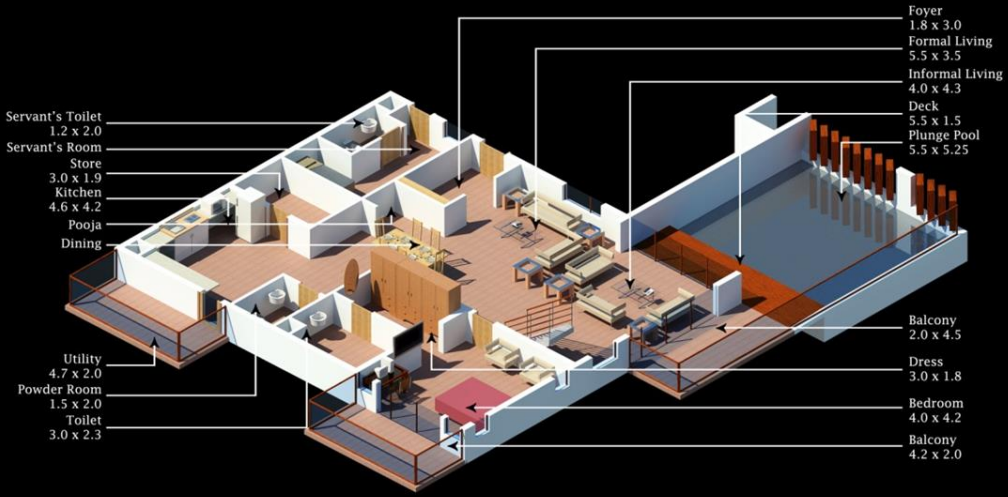


**Type A**  
**4 BHK PLUNGE POOL**  
 Super Built up Area - 488.8 sqm



Toilet  
2.0 x 3.0  
Dress  
2.0 x 2.3  
Dress  
2.0 x 2.3  
Toilet  
2.0 x 3.0  
Bedroom  
4.0 x 5.4  
Balcony  
4.0 x 2.0

Bedroom  
4.0 x 5.4  
Family Space  
3.2 x 4.4  
Double Height  
Dress  
3.1 x 1.8  
Toilet  
3.1 x 2.3  
Bedroom  
4.0 x 4.2  
Balcony  
4.2 x 2.0



Servant's Toilet  
1.2 x 2.0  
Servant's Room  
Store  
3.0 x 1.9  
Kitchen  
4.6 x 4.2  
Pooja  
Dining

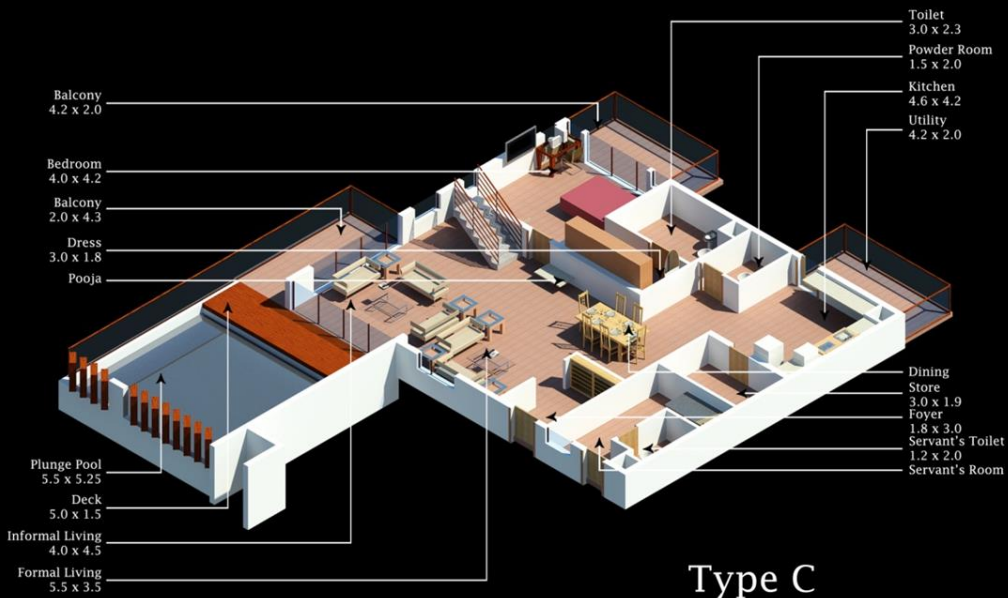
Utility  
4.7 x 2.0  
Powder Room  
1.5 x 2.0  
Toilet  
3.0 x 2.3

Foyer  
1.8 x 3.0  
Formal Living  
5.5 x 3.5  
Informal Living  
4.0 x 4.3  
Deck  
5.5 x 1.5  
Plunge Pool  
5.5 x 5.25

Balcony  
2.0 x 4.5  
Dress  
3.0 x 1.8  
Bedroom  
4.0 x 4.2  
Balcony  
4.2 x 2.0



**Type B**  
**4 BHK PLUNGE POOL**  
Super Built up Area - 485 sqm



**Type C**  
**4 BHK PLUNGE POOL**  
 Super Built up Area - 485 sqm



Toilet  
2.0 x 3.5  
Dress  
4.0 x 1.7  
Bedroom  
4.0 x 4.2  
Dress  
4.0 x 2.0  
Toilet  
2.0 x 3.5  
Bedroom  
4.0 x 4.5  
Family Space  
3.2 x 4.4

Balcony  
3.8 x 2.0

Balcony  
4.2 x 2.0  
Toilet  
3.0 x 2.0  
Dress  
3.0 x 2.1  
Bedroom  
4.0 x 4.2

Double Height



Toilet  
2.0 x 3.5  
Dress  
3.0 x 2.7  
Bedroom  
4.0 x 4.2  
Servant's Room  
Servant's Toilet  
1.2 x 2.0  
Pooja  
Dining  
Foyer  
2.0 x 3.0  
Formal Living  
5.6 x 4.1

Balcony  
4.1 x 2.0

Powder Room  
1.5 x 2.0  
Store  
1.5 x 2.0  
Utility  
4.0 x 2.0

Kitchen  
4.1 x 5.4

Informal Living  
4.0 x 4.1  
Balcony  
2.0 x 5.4

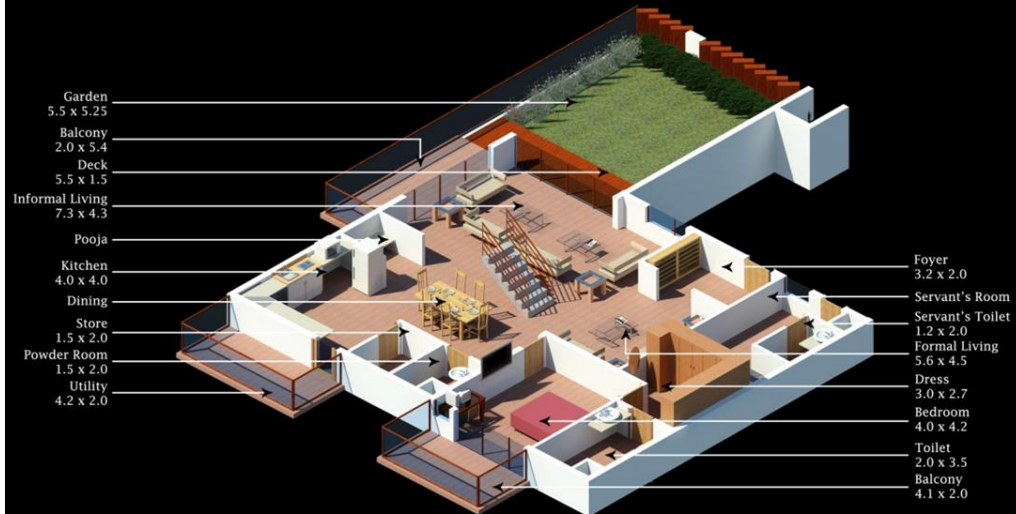
Deck  
5.5 x 1.5

Plunge Pool  
5.5 x 5.25

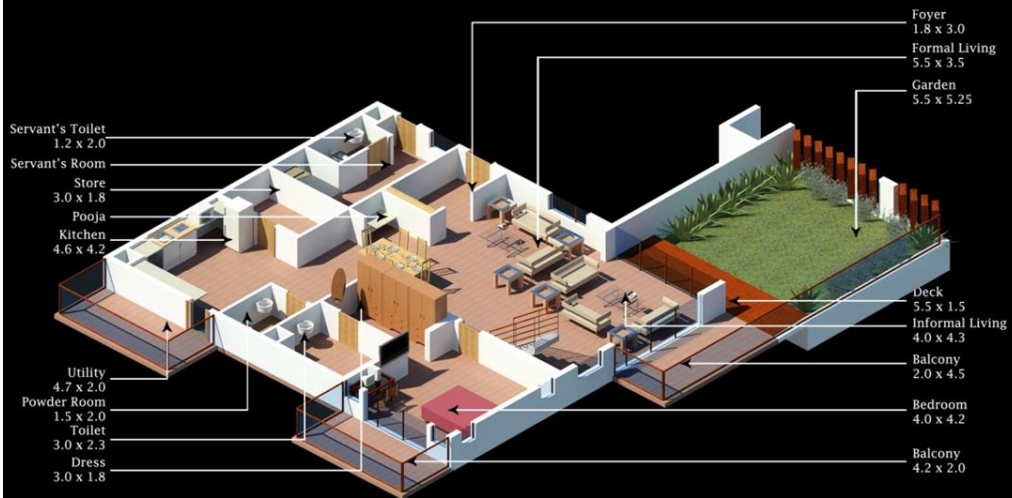


**Type D**  
**4 BHK PLUNGE POOL**  
Super Built up Area - 488 sqm

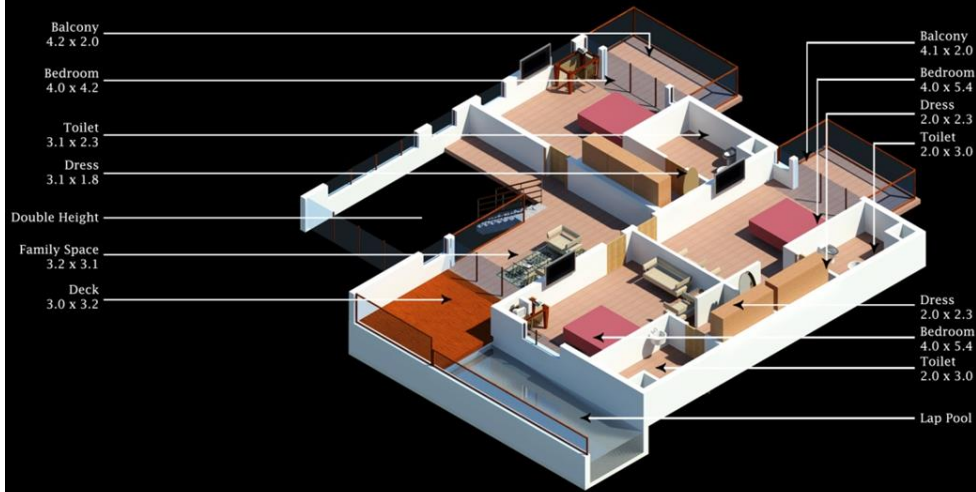




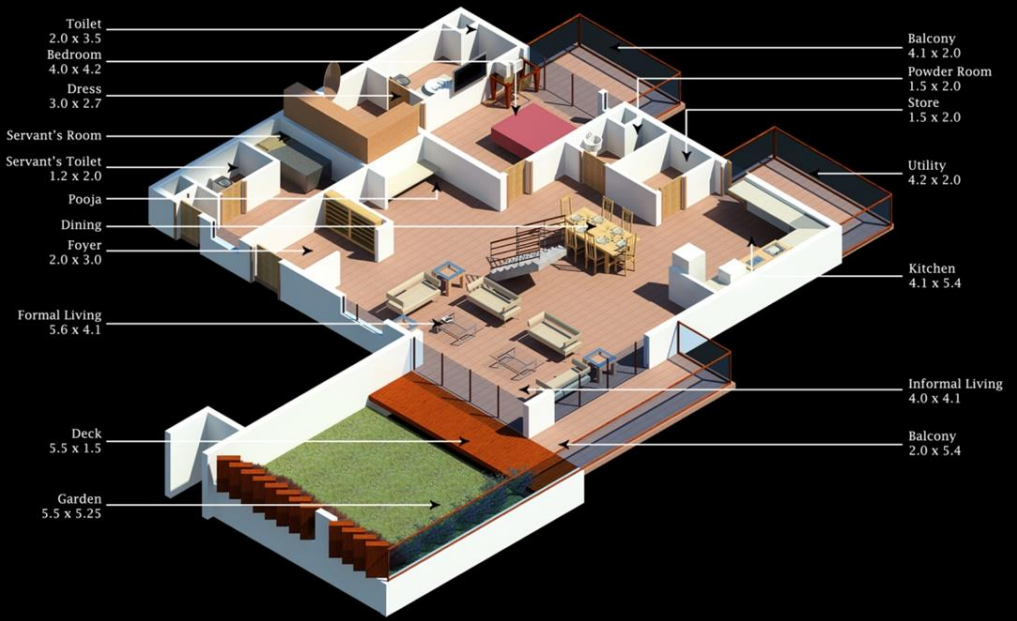
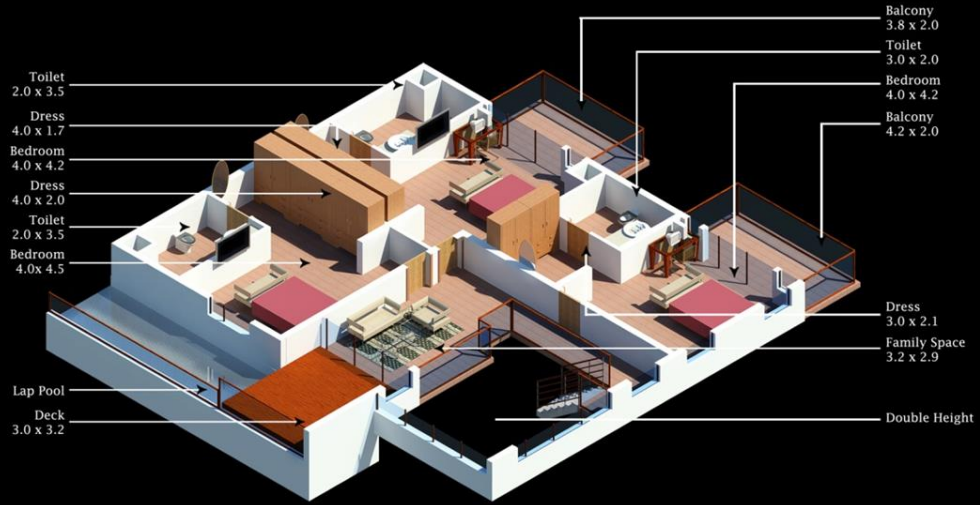
**Type E**  
**4 BHK GARDEN + LAP POOL**  
 Super Built up Area - 510.7 sqm



**Type F**  
**4 BHK GARDEN + LAP POOL**  
 Super Built up Area - 506.3 sqm



**TYPE G**  
**4 BHK GARDEN + LAP POOL**  
 Super Built up Area - 506.3 sqm



**Type H**  
**4 BHK GARDEN + LAP POOL**  
 Super Built up Area - 510.7 sqm