

CAPABILITY STATEMENT

STUKEL STONE

ARCHITECTURE | PERFORMANCE DESIGN



WHO

Stukel Stone is an award-winning architecture and design studio, experienced in cultural, residential, and commercial projects. Directors Daniel Stukel Beasley and Tobhiyah Stone Feller bring a unique combination of skills across architecture, art, costume and set design to each project. Their focus on movement and the performative aspects of human environments – public, theatrical and domestic – gives their work an elegant rigour that's expressive, innovative and inclusive.

"The team is accessible and responsive, providing accurate advice regarding process and approvals." Client



DANIEL STUKEL BEASLY
BArch (Hons 1) (UNSW) RAI A

DIRECTOR

Registered Architect with a decade of professional experience. Foundation years were at PTW Architects where he was responsible for facades and structure for the major extension at the National Art Gallery (NGA). Daniel is also a regular academic at UTS, School of Architecture.



TOBHIYAH STONE FELLER
BDA (Design) (NIDA)

DIRECTOR

NIDA trained set and costume designer working with exceptional directors and choreographers. Her design is grounded in storytelling and abstraction. She brings confident awareness of contemporary visual and performing arts practices to the design process of all projects.



ANDREA KLASS HARRISON
B.Arch UNSW
Master Des. Sci. (Design Comp.) USYD
ARCHITECT

Senior registered Architect with over a decade of professional experience in residential, retirement and railway design. Andrea has a passion for seeing projects through from the formation of a design brief to contract administration and construction. Andrea would assist in documentation and project management.



JEFF TAPLIN TIGHE
BDes Arch UTS

ARCHITECTURAL ASSISTANT

Currently studying Masters of architecture UTS. Jeff is a designer and also contributes knowledge of current digital fabrication processes. A consummate model maker both in the physical and digital realm.



JARROD TREMAYNE PHILLIPS
BDes Arch UTS

ARCHITECTURAL ASSISTANT

Master of Architecture student, University of Technology Sydney. Commencing his career as an apprentice fire services technician. He is a qualified building designer. Jarrod is also an experienced BIM user having taught ArchiCAD at the Open Training and Education Network (OTEN). Jarrod would assist in construction documentation.



Rigorous technical knowledge is matched with honed conceptual thinking to achieve exceptional outcomes for our clients.

ARCHITECTURE

Technical knowledge of structural forces and construction systems underpin our architectural projects. Innovations in form and composition are fully resolved and documented for successful built outcomes.

END-TO-END SERVICES

IN-DEPTH DESIGN PROCESS

DIGITAL 3D MODELLING

INDUSTRY LEADING BIM SOFTWARE

INNOVATIVE DESIGN SOLUTIONS

HIGH RATE OF SUCCESSFUL DA APPROVALS

ASSISTANCE WITH BUILDER SELECTION

REGULAR CLIENT LIAISON & SITE VISITS

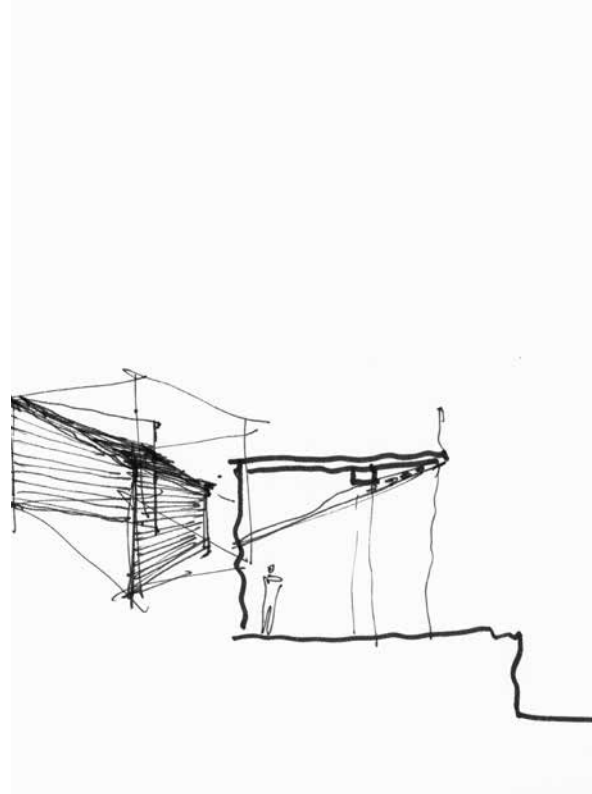
TEAM OF REGULAR CONSULTANTS

MASTERPLANNING & MULTI-RESIDENTIAL

COMMERCIAL & RESIDENTIAL EXPERIENCE

UTS SCHOOL OF ARCHITECTURE AFFILIATED

AIA A+ PRACTICE



INSTALLATION

Resourcefulness, wonderlust and story-telling are foundations for our award winning installations. Experience in live performance design has led to many successful commercial and artistic projects.

AWARD-WINNING RETAIL DESIGN

LIGHTWEIGHT FABRICATION

TEMPORARY STRUCTURES

MODULAR DESIGN FOR EASE OF ASSEMBLY

SEAMLESS INTEGRATION OF LIGHTING

RESOURCEFUL MATERIAL SELECTION

ARTISTIC RESPONSE TO BRIEFS

DIGITAL AND HANDCRAFTED MODELS

EVOCATIVE & ABSTRACT STYLE

COMMERCIAL & NOT-FOR-PROFIT CLIENTS

INSTALLATIONS IN THE PUBLIC REALM

INTIMATE & LARGE AUDIENCES





INTERIOR DESIGN

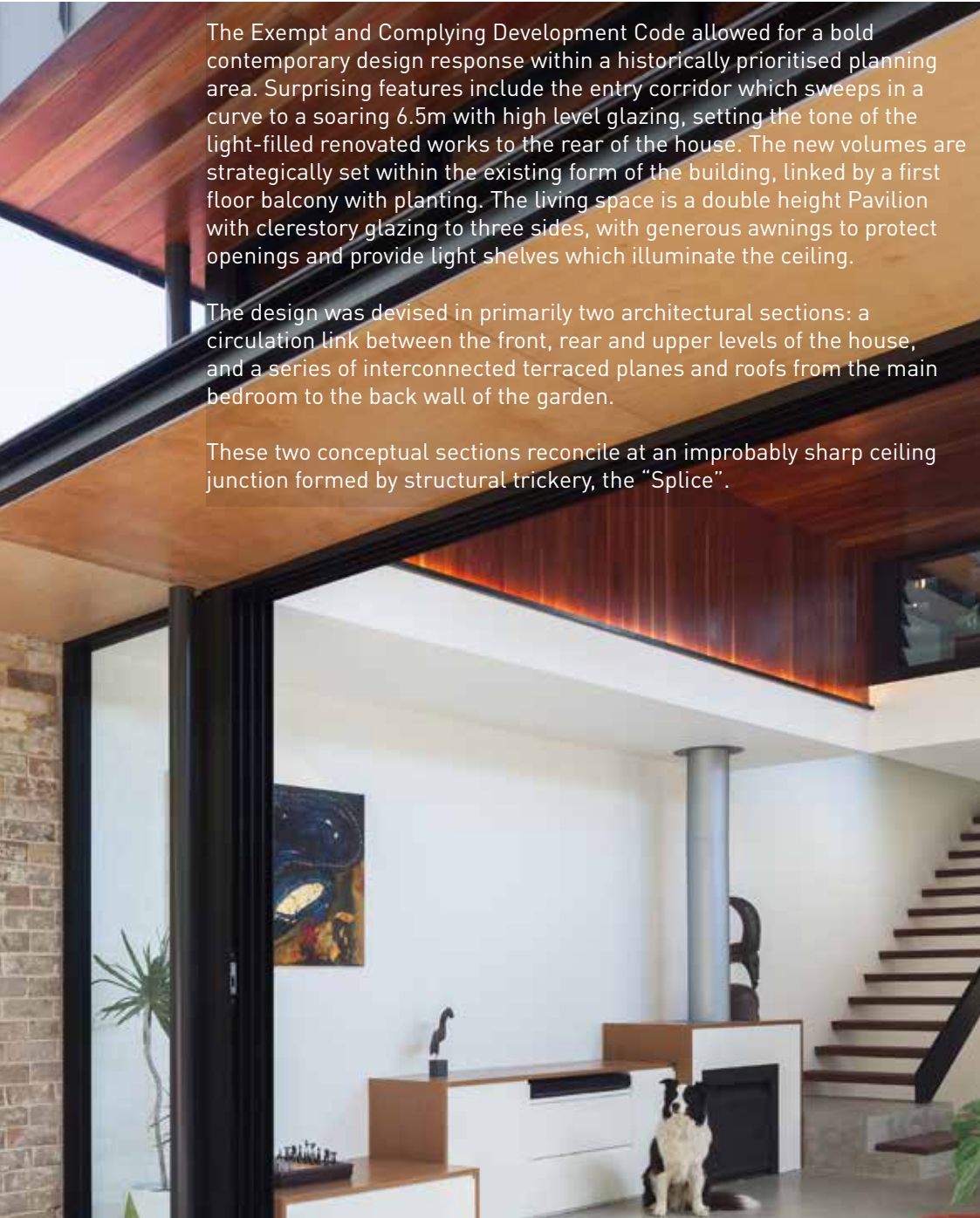
Every project is a unique confluence of brief, style and spatial considerations. The design process works towards an immersive and visually arresting environment.

- EXPERIENCED IN RESIDENTIAL & COMMERCIAL APPLICATIONS
- SUCCESSFUL COUNCIL & STRATA APPROVALS
- LIGHTING BOTH ARTIFICIAL & NATURAL
- STRONG TRADE RELATIONSHIPS
- PROVEN HISTORY IN COLOUR PALETTE SELECTION
- NETWORK OF LOCAL ARTISANS & BESPOKE MANUFACTURERS
- KNOWLEDGE OF ERGONOMICS

Twenty years combined experience
designing and administering contracts
for projects both big and small.



SPLICEHOUSE



The Exempt and Complying Development Code allowed for a bold contemporary design response within a historically prioritised planning area. Surprising features include the entry corridor which sweeps in a curve to a soaring 6.5m with high level glazing, setting the tone of the light-filled renovated works to the rear of the house. The new volumes are strategically set within the existing form of the building, linked by a first floor balcony with planting. The living space is a double height Pavilion with clerestory glazing to three sides, with generous awnings to protect openings and provide light shelves which illuminate the ceiling.

The design was devised in primarily two architectural sections: a circulation link between the front, rear and upper levels of the house, and a series of interconnected terraced planes and roofs from the main bedroom to the back wall of the garden.

These two conceptual sections reconcile at an improbably sharp ceiling junction formed by structural trickery, the "Splice".

RESIDENTIAL



COMPLETED 2015
FLOOR AREA 112M2
\$550K TOTAL PROJECT COST
SEPP APPROVAL CDC

"Engaging Daniel as our architect ensured that we achieved the best outcome we could wish for. The result is a fantastic 'Splice' house, which provides us with great, comfortable and perfectly connected living spaces that make us happy every day. Stukel Stone made our renovation experience a great one and we wouldn't doubt engaging them again or recommending their services to others." Client

BOUNCE HOUSE

The key design move for this small inner west renovation was to bounce northern light into the interior living spaces.

An enlarged angular eave fascia acts as the reflector which in turn capitalises on the neighbours wall to illuminate the kitchen, living and dining through windows set within a wall of joinery.

The uncharacteristic wide side passage is deliberately linked to both the living spaces and the rear yard to increase the sense of space on the small site.



*“Understanding how light works was key to this redesign by Stukel Stone”
Jenny Brown SMH*

RESIDENTIAL

COMPLETED 2013
FLOOR AREA 43M2
\$280K TOTAL PROJECT COST
SOLD FOR \$1,337,000



CHILLI HOUSE

Home for a passionate cook and retired academic. The couple were a delight to work with and supported the team in exploring some wild colour choice and juxtapositions. The eye popping yellow kitchen cabinet was selected from the ever-present 8m Stanley tape measure and the red interiors to the open shelves a prerequisite Thai inclusion.

At the heart of the project is the brightly coloured generous kitchen alongside a comfortable light-filled timber-lined study.

The uniqueness of the clients was at the forefront of all design discussions and also an inspiration for the decision to approach the pre-eminent portraiture and fashion photographer Rafel Gaweda.



RESIDENTIAL

COMPLETED 2014
FLOOR AREA 40M2
\$200K TOTAL PROJECT COST
DA APPROVED IN HERITAGE
CONSERVATION AREA

KIRRIBILLI BALCONIES

This inter-war apartment building offers the residents incredible views over Sydney Harbour but only with small enclosed south facing balconies.

The project will add external private open space to catch late summer sunlight and engage directly with the iconic setting of the Sydney skyline.

The design innovates by cantilevering concrete encased steel structure from deep within the existing building which removes ubiquitous column supports.

RESIDENTIAL



DA APPROVED 2016
TOTAL BALCONY AREA 60M2
CONCRETE ENCASED STEEL
TEXTURED GLASS

FACADE GRAPHIC 2500M2
\$150K COST OF WORKS



With the use of only paint, the client was seeking to transform a repetitive facade of an existing hotel. Early design studies lead us to trompe l'oeil techniques to modulate and transform this planar surface.

The resultant design utilises a series of rectangles set-out from the existing reglets and edges of the precast concrete panels. The result is a dynamic graphic that activates the prominent position near Sydney's domestic airport.

IBIS AIRPORT HOTEL



COMMERCIAL

INSTALLATION

ZINC BED/ BLOODBANK

"Zinc Bed/Blood Bank is a beautiful design, both conceptually and physically. This project explores the notion of two theatre productions sharing a set and the sustainable outcomes and versatility that result. The designers have devised a clever, sculptural solution that seamlessly integrates people, technology and theatre. Lighting was evolved to become the hero, being applied as a sculptural backdrop that can morph to create different settings, environments and expressions. "

Jury citation 2016 Australian Interior Design Awards

- WINNER 2016 Australian Interior Design Awards Installation Category



My Zinc Bed/ Blood Bank is a set design for the Ensemble Theatre's 2015 season. Minimal in style the space is finely calibrated to suit two separate productions. A seemingly simple composition of levels and ramps allowed complex scenes to play out graced by planes of coloured light.



INSTALLATION

Stukel Stone collaborated with artist Sebastian Zagarella to bring his autobiographical installation to life.



INSIDE OUT



An appropriated image of an HIV virus cell is applied to different mediums within a purpose-built domestic environment, inviting the audience to enter into, and consider a personal perspective on life-defining illnesses – in this case HIV.

The installation bridges the gap between what is happening 'inside'; a battle that is going on at a cellular level, and 'out'. It hopes to encourage audiences to engage with the reality of this life-defining illness and spark personal conversations about something often left unspoken.



"Our amazing shoe sculpture captures the creative spirit and the euphoric feeling a woman gets when she creates the perfect shoe." Client



The brief A Moment of Euphoria! inspired Stukel Stone to imagine a cluster of exotic blooms made from shoes. With cues for the colour and form taken from carnivorous plants, sixty custom high-heels were designed using the Shoes of Prey online software.

It is a truly immersive environment with the store design elements - lighting, sound and scent - all working seamlessly together to create a rich customer experience.

WINNER STORE DESIGN OF THE YEAR, 2013
World Retail Awards held in Paris
As the only Australian finalist in the Store Design of the Year, Shoes of Prey went up against a Puma flagship store in Osaka and a Karl Lagerfeld concept store in Paris.

WINNER SYDNEY DESIGN AWARDS, 2013
Interior Design - Retail

COMMENDATION DULUX COLOUR AWARDS, 2014
Commercial Interior category

INSTALLATION

SHOES OF PREY

An interior design for a site rich in cultural and historic significance. This building is the birthplace of NIDA.

The bespoke seating platform plays with the theme of spectator versus performer. By blurring this relationship the platform doubles as a seating bank, allowing patrons to simultaneously 'see' and 'be seen'.



The bar is graced by a changeable backdrop made of wide glass reversible panels. This enables the foyer space to be manipulated to set the mood for a production whether it be a tragedy, comedy or contemporary avant garde performance.



INTERIORS

FIG TREE THEATRE FOYER & BAR



COMPLETED 2016
DA & CDC APPROVED
FLOOR AREA 35M2
\$186K TOTAL PROJECT COST

This family oriented interior project was characterised by two contemporary windows inserted into the unrenovated federation dwelling.

The wide horizontal 'Ned Kelly' internal opening in the Lounge frames the Turpentine Eucalyptus forest to the rear of the property, and the deep square bay Dining window offers a touch more elbow room and an informal spot to perch.

A south facing skylight to the kitchen has been strategically positioned above the joinery allowing the natural diffuse light to wash down the coloured surface.

INTERIORS

NEDKELLY HOUSE

PRESS & AWARDS

- WINNER Australian Interior Design Awards, Installation Design - 2016
- COMMENDATION Open Agenda, UTS & Biennale of Sydney - 2016
- HIGHLY COMMENDED APDG, Emerging Live Performance Design - 2014
- COMMENDATION Dulux Colour Awards, Commercial Interior - 2014
- WINNER Sydney Design Awards, Interior Design – Retail - 2013
- WINNER World Retail Awards, Store Design of the Year - 2013





SUITE 202
59 GREAT BUCKINGHAM STREET
REDFERN NSW 2016

02 9698 2591

WWW.STUKELSTONE.COM

 [@STUKEL_STONE](https://www.instagram.com/@STUKEL_STONE)

 [@STUKEL STONE](https://www.facebook.com/@STUKEL_STONE)

 [@STUKEL_STONE](https://www.twitter.com/@STUKEL_STONE)



CONTACT