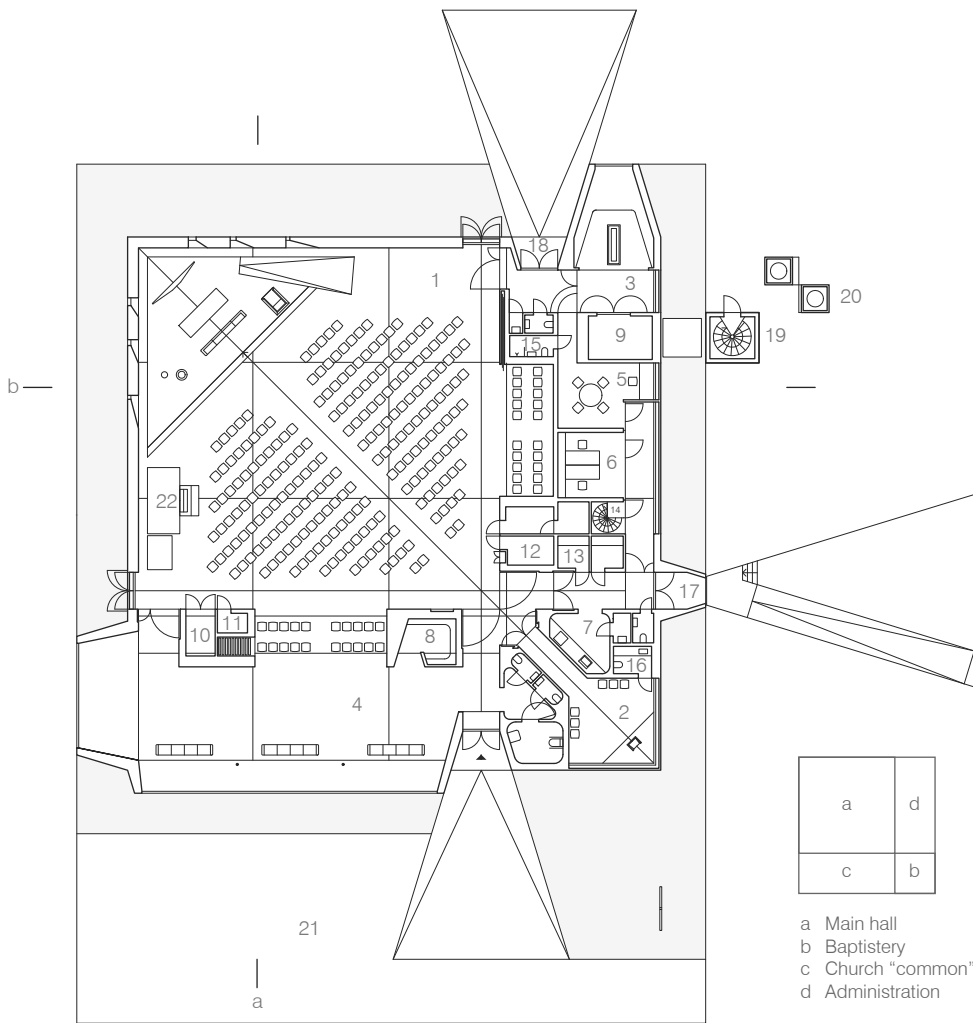
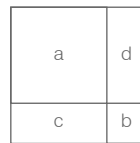


bb

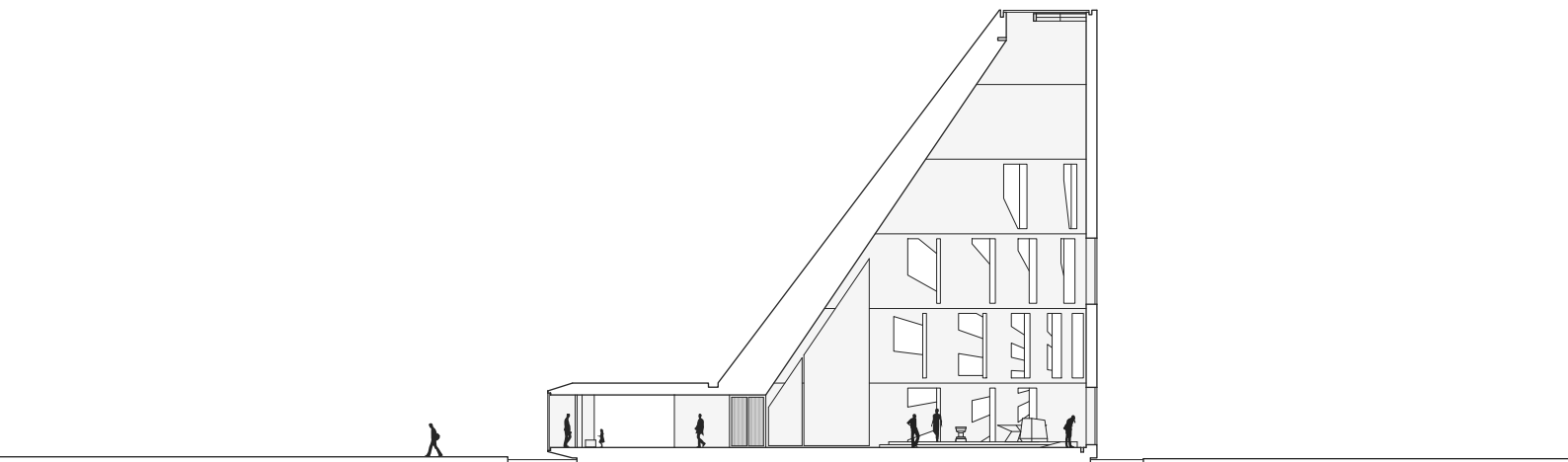


- 1 Main hall
- 2 Baptistery
- 3 Wake space
- 4 Church "common"
- 5 Sacristy
- 6 Office
- 7 Kitchen
- 8 Cloakroom
- 9 Cooler
- 10 Soundmix
- 11 Office store
- 12 Store and light controls
- 13 Kitchen store
- 14 Stairs to plant room
- 15 Bathroom, clergy
- 16 Washing room
- 17 Administration entrance
- 18 Relatives entrance
- 19 Stairs to plant room
- 20 Ventilation tower
- 21 Church plaza
- 22 Organ



- a Main hall
- b Baptistery
- c Church "common"
- d Administration

Våler church - Plan and sections 1/400



aa