

# 雨水收集与利用系统

# Rainwater collection and utilization system

屋顶、场地雨水均为雨水收集系统的水源。

其中，屋顶雨水的收集采用虹吸雨水系统，广场的雨水收集采用缝隙式成品排水地沟的收集方式收集，绿化部分的雨水收集采用在绿化下敷设穿孔渗透管加渗透井式雨水口的收集方式收集绿地径流部分的雨水。

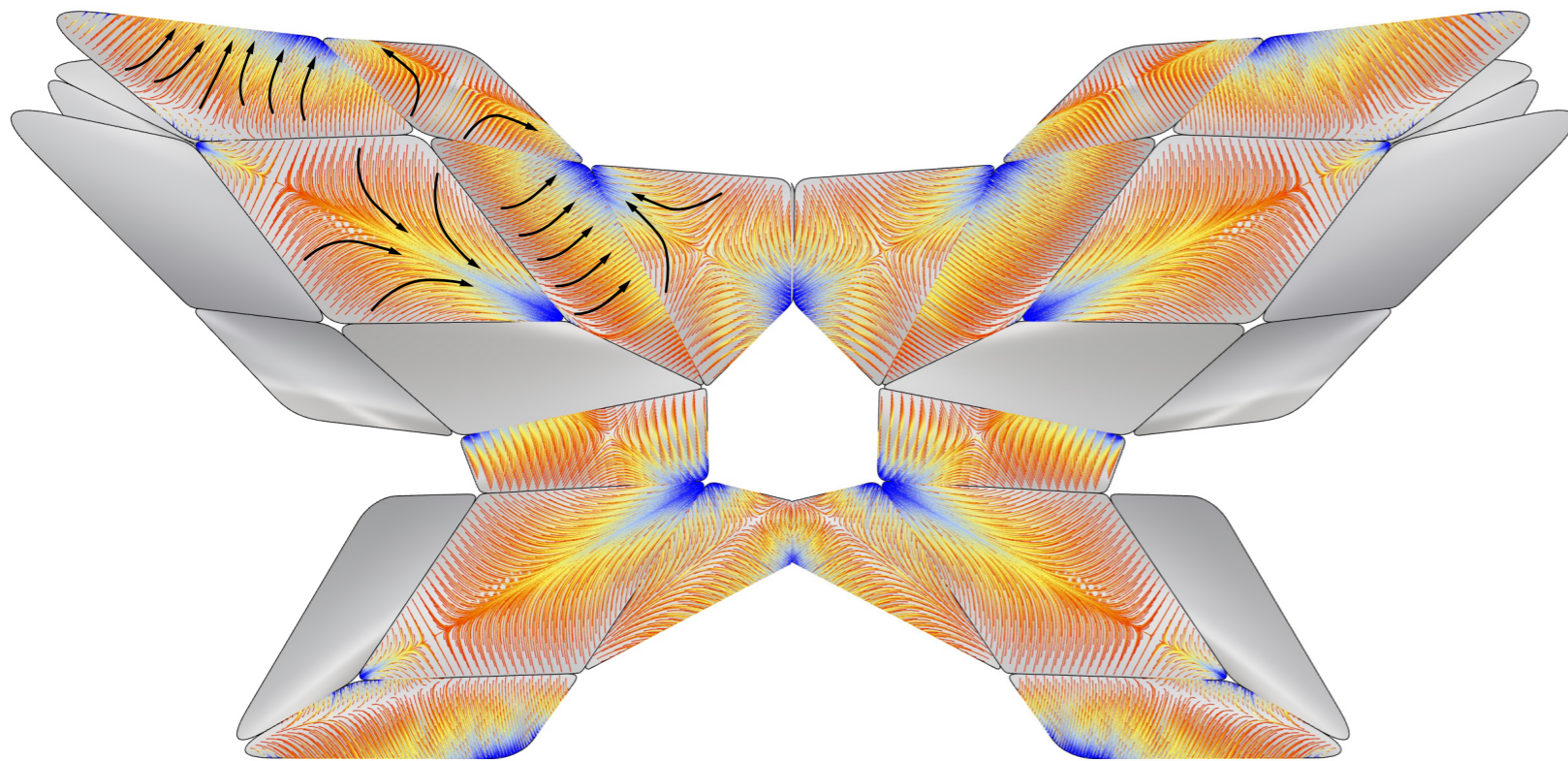
雨水经处理后优先用于广场的浇洒、绿化浇洒及车库地面冲洗、洗车，在雨量充足的情况下考虑采用部分雨水处理后做为景观水体补水。

The water source for rainwater collection system will be on the roof and the landscape.

Among them, the collection of roof rainwater adopts the siphon rainwater system, the collection of rainwater in the landscape adopts the collection method of drainage ditch, and the collection of rainwater at the planter area adopts the collection method of laying perforated infiltration pipes and infiltration well-type rainwater outlets under the greening to collect green space. Rainwater from the runoff portion.

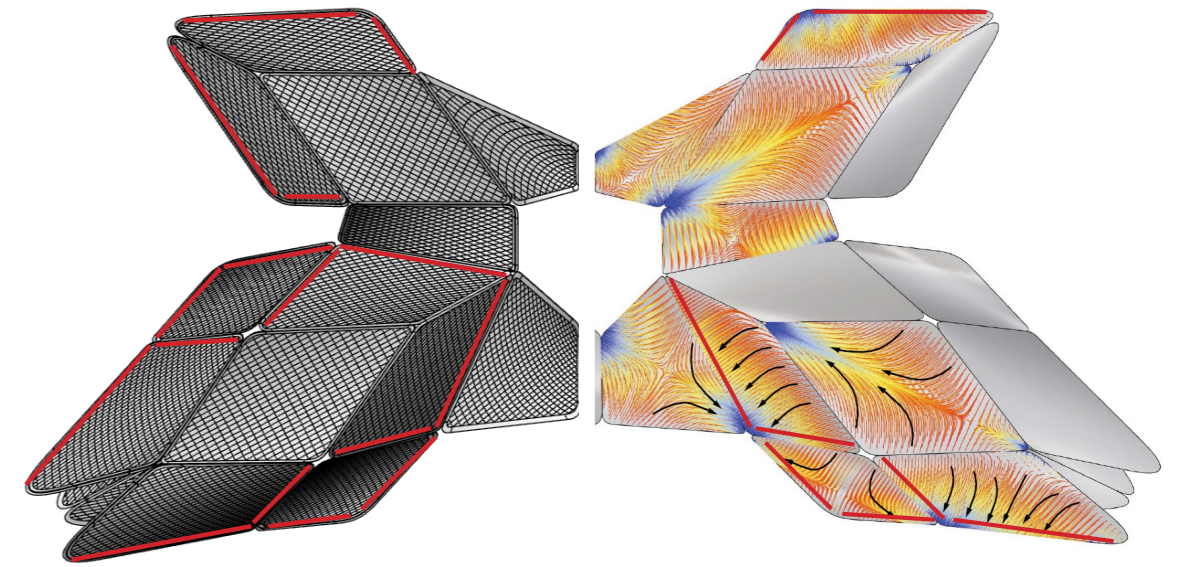
Once the rainwater is collected, it is preferentially used for the watering of the square, the planter, and for the washing of the ground of the garage, and the washing of the car. In the case of sufficient rainfall, it is considered that part of the rainwater will be used as the landscape water replenishment after the treatment.

LANDSCAPE ARCHITECTS

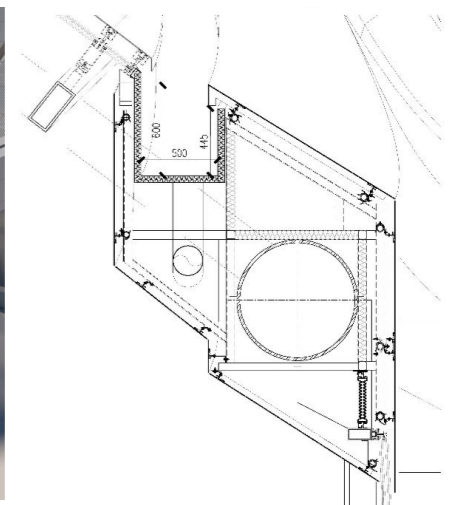
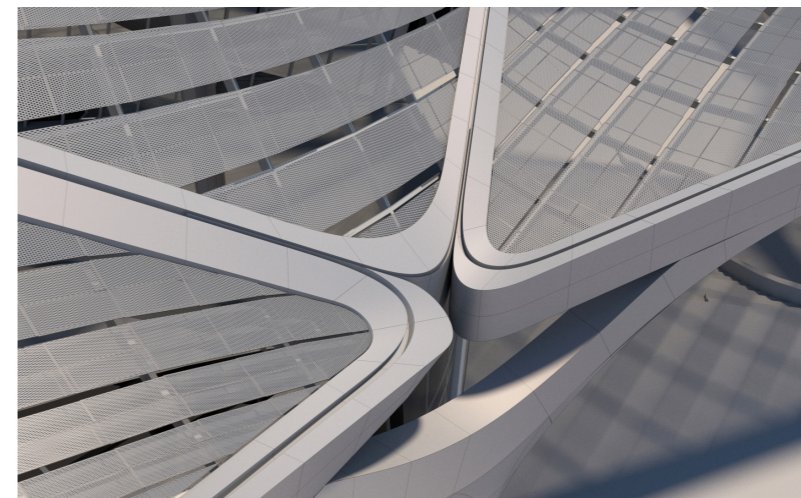


The geometric rain flow is shown in the photo on the opposite side. The red indicates highest point on surface and the blue indicates the lowest one. Every single curve indicates the trajectory of a droplet flowing on the surface from its highest point (red) to its lowest point (blue).

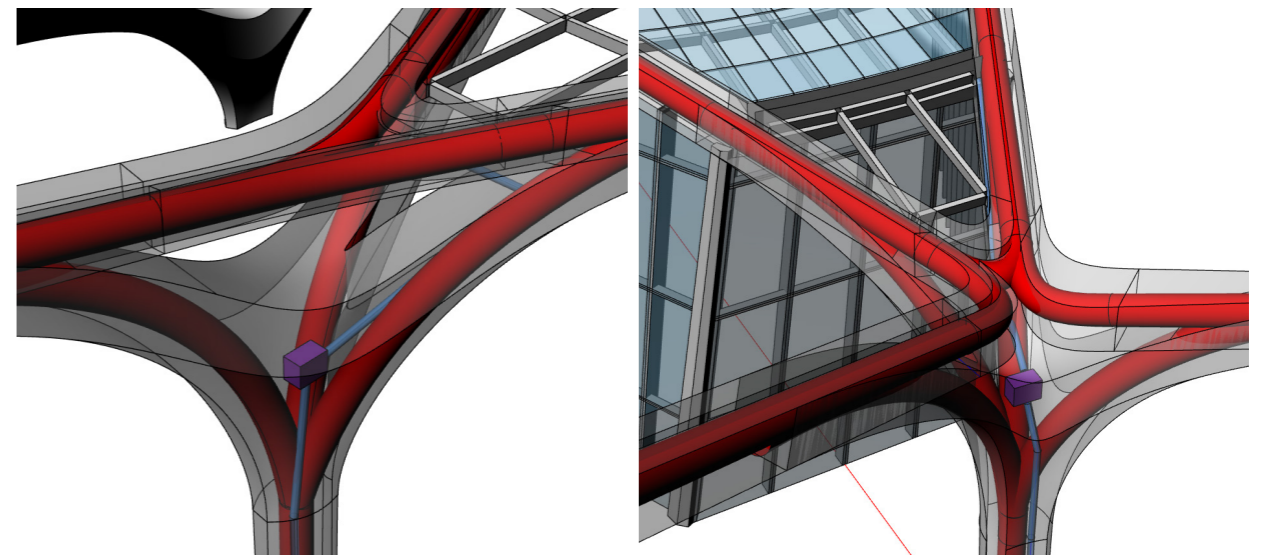
雨水流向在另一边截图中有显示，红色表示的是表面最高点而蓝色则表示的是最低点，每条曲线都表示从最高点(红色)到最低点(蓝色)的流向轨迹。



Locations where the gutter can work and be effective. 有效的布置集水沟位置



Gutter detail and design 集水沟细节以及设计



Water collection point and design 集水槽位置以及设计