

AZTECO

AZTECO è un sistema modulare caratterizzato da due strutture "monolitiche" definite da una geometria "sculpta": una longitudinale (composta da MODULARI A) ed una verticale (composta da MODULARI B), entrambe connesse mediante un corpo scala vetrato con frangisole (MODULARE C).

	2
	2
	1
	1-4
	20m x14m 157,30 mq

Proposta di una residenza modulare per il concorso internazionale - inHAUS LAB "Diseña tu casa modular" (2018)
<https://casainhaus.com/il-concorso-internazionale-inhaus-lab-progetta-la-tua-casa-modulare/>

1

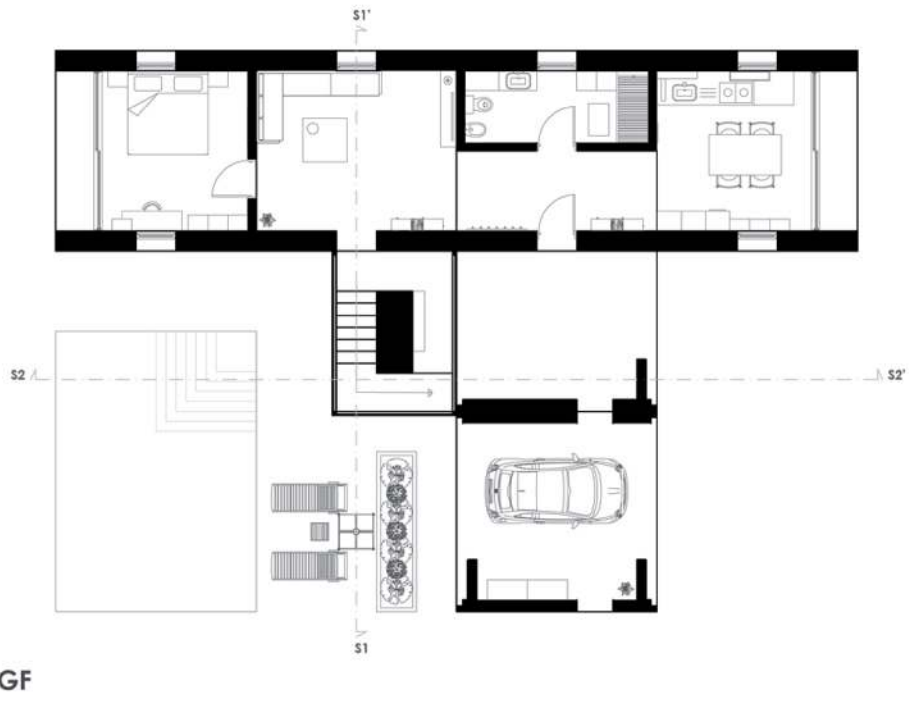
AZTECO

AZTECO is a modular system characterized by two "monolithic" structures defined by a "sculpted" geometry: a longitudinal (composed of MODULAR A) and a vertical (composed of MODULAR B), both connected by a glass staircase with sunblinds (MODULAR C)

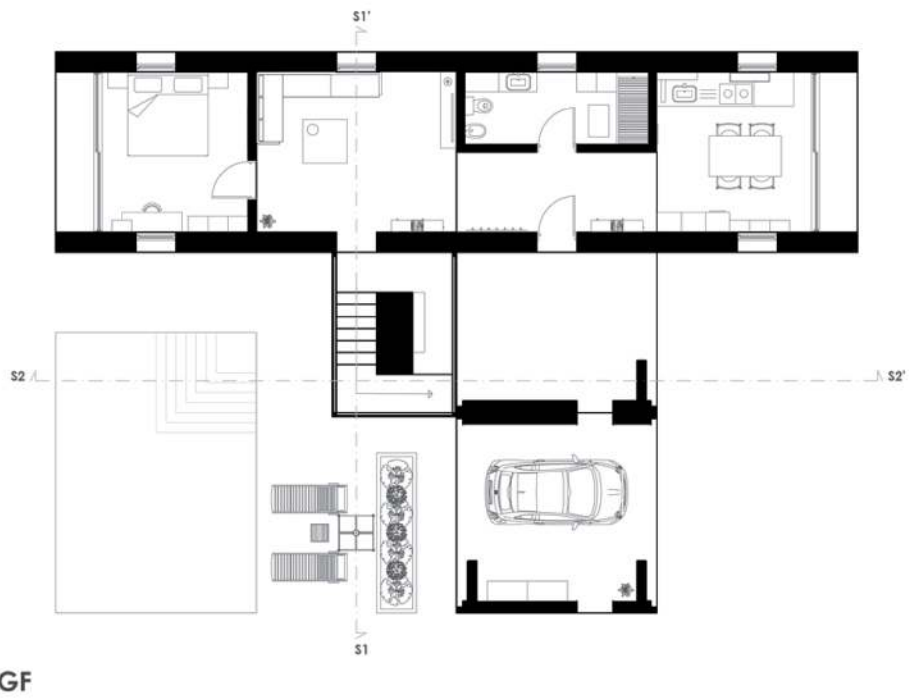
	2
	2
	1
	1-4
	20m x14m 157,30 mq

Proposal for a modular residence for the international competition- inHAUS LAB "Diseña tu casa modular" (2018)
<https://casainhaus.com/il-concorso-internazionale-inhaus-lab-progetta-la-tua-casa-modulare/>

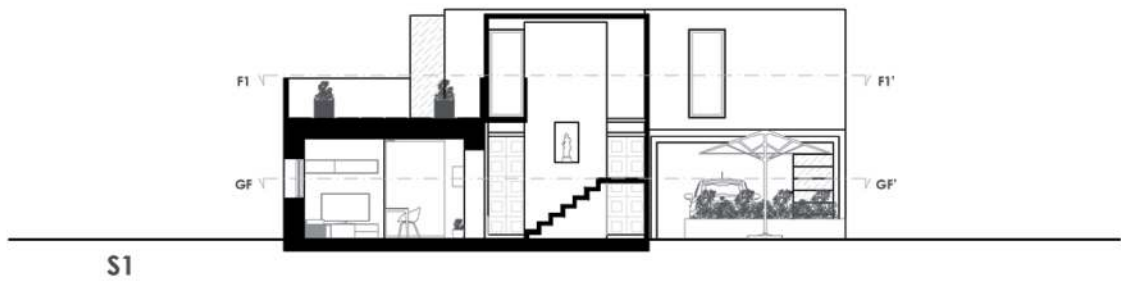
1

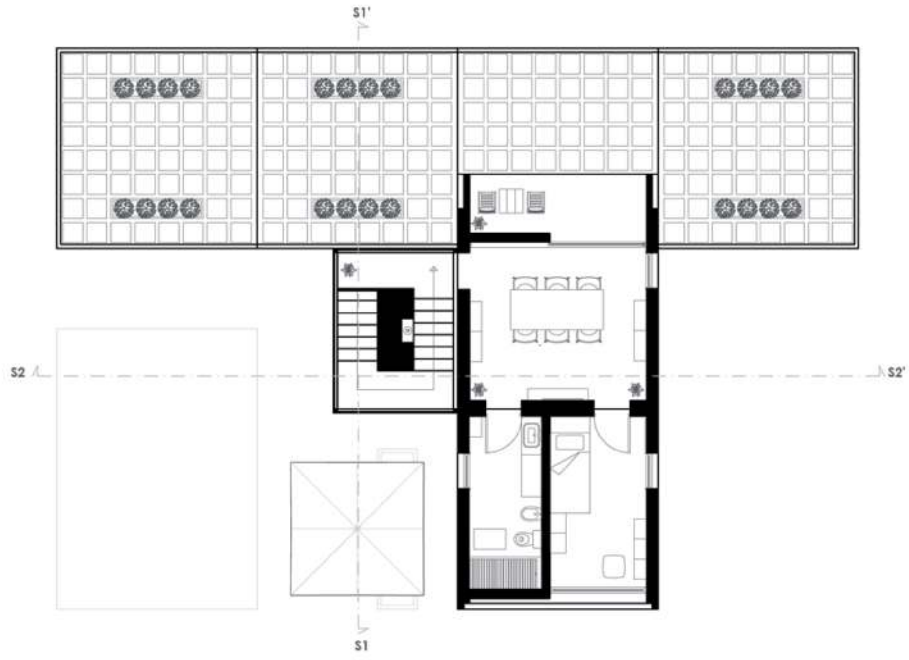


GF

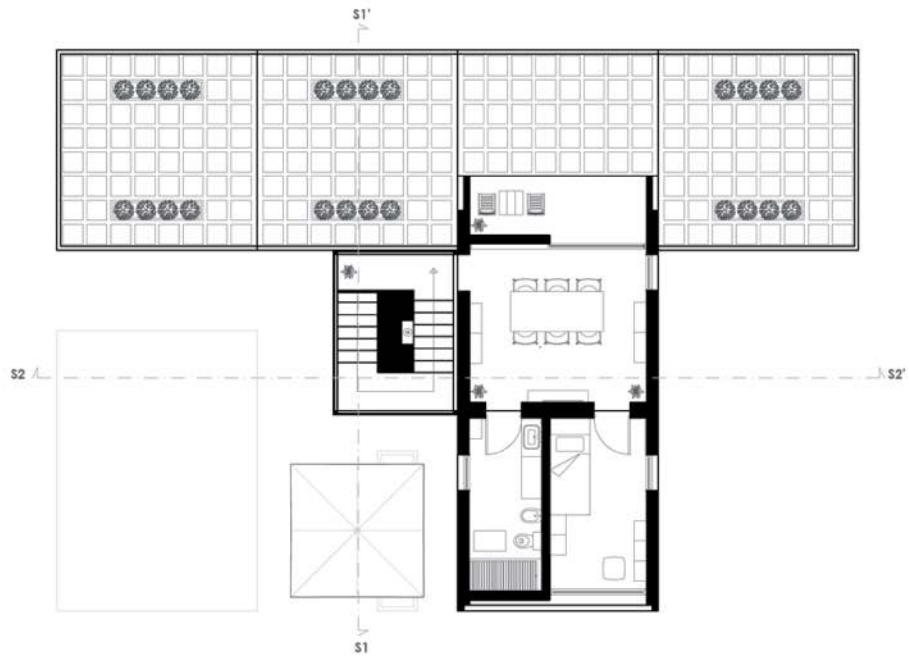


GF

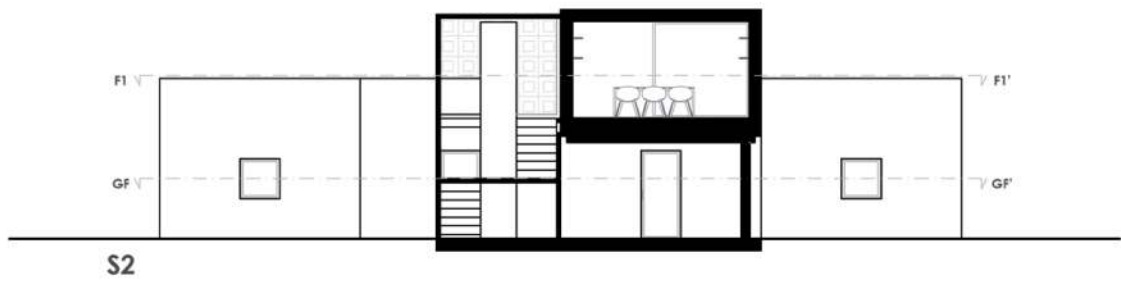
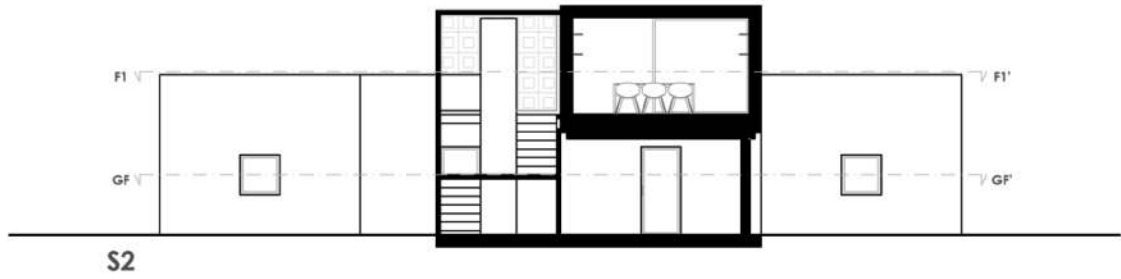


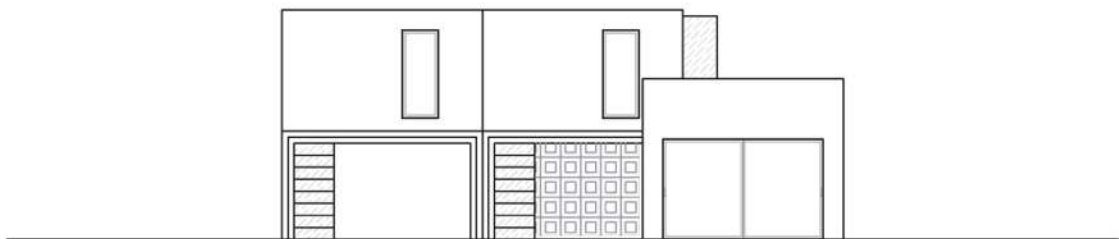
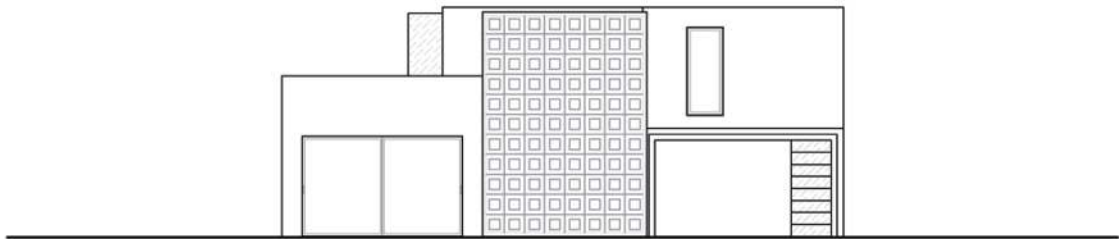
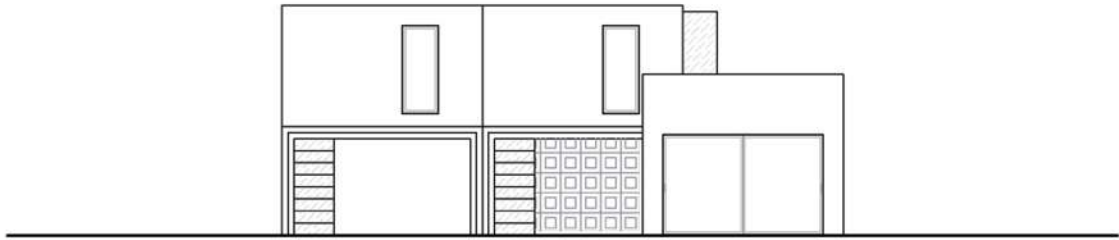
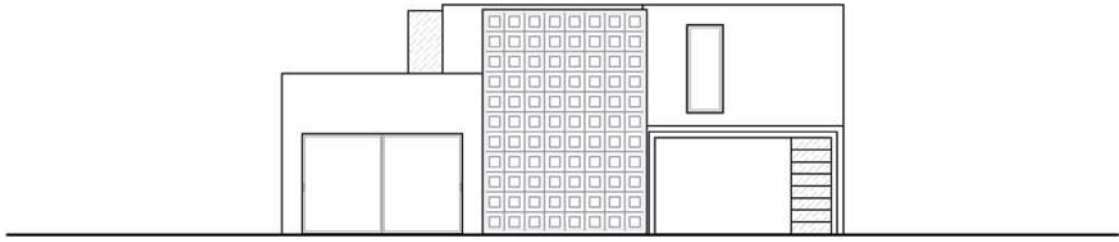


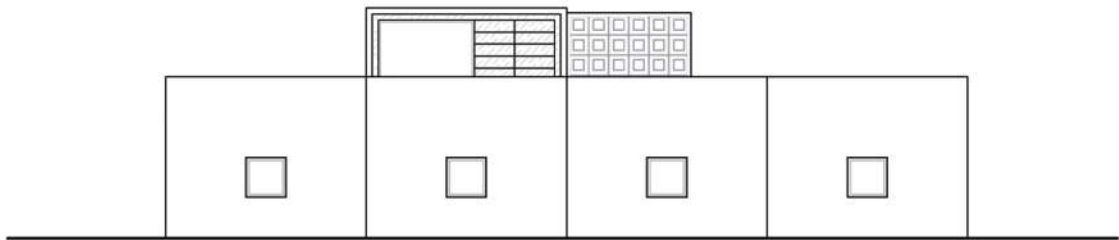
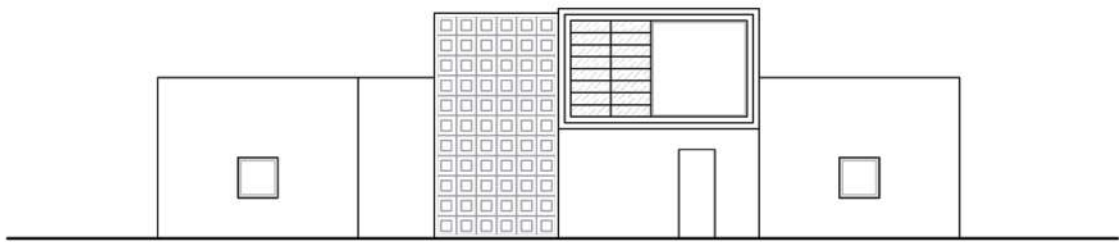
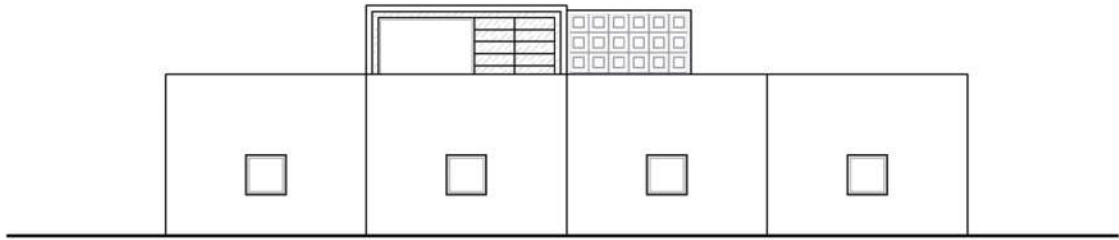
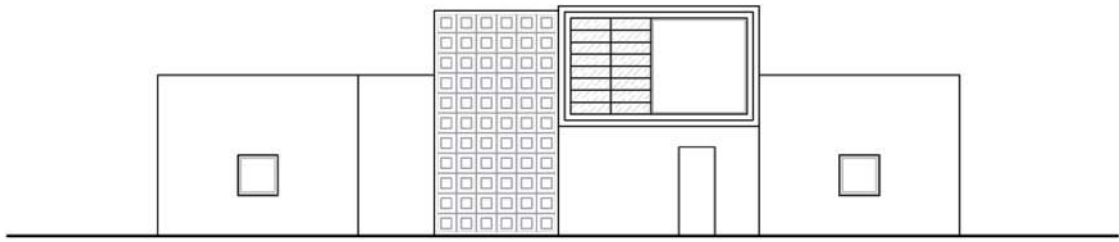
F1

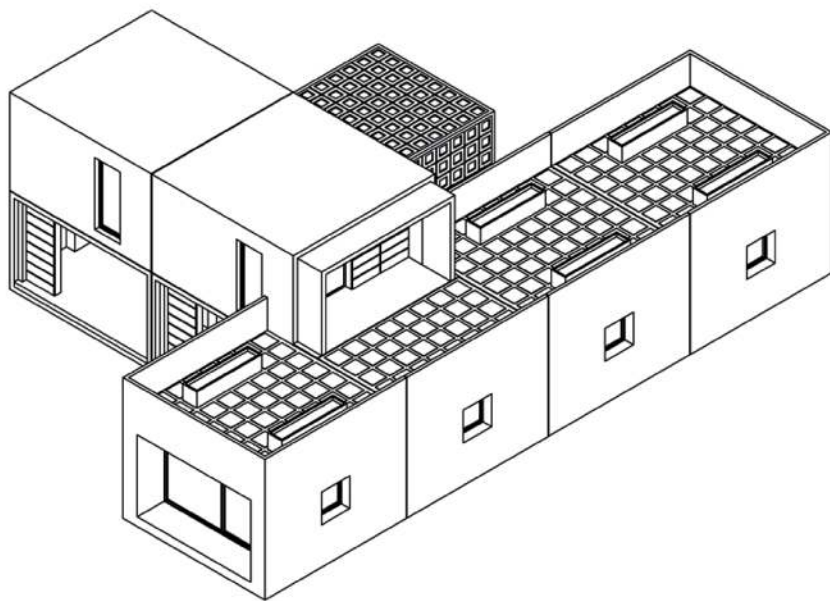
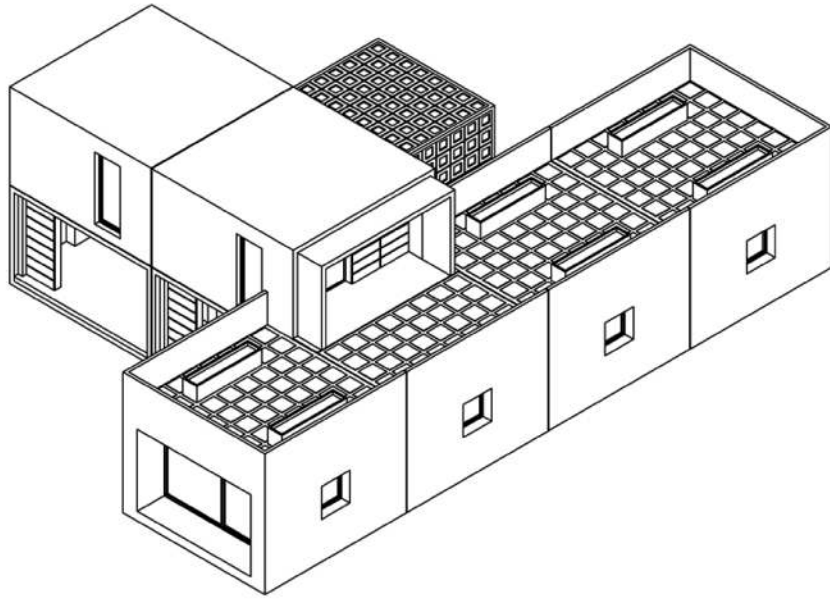


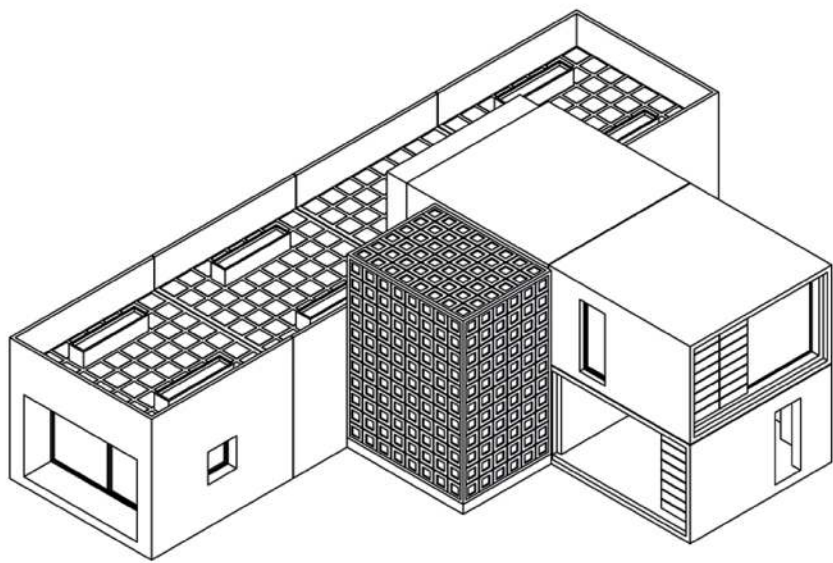
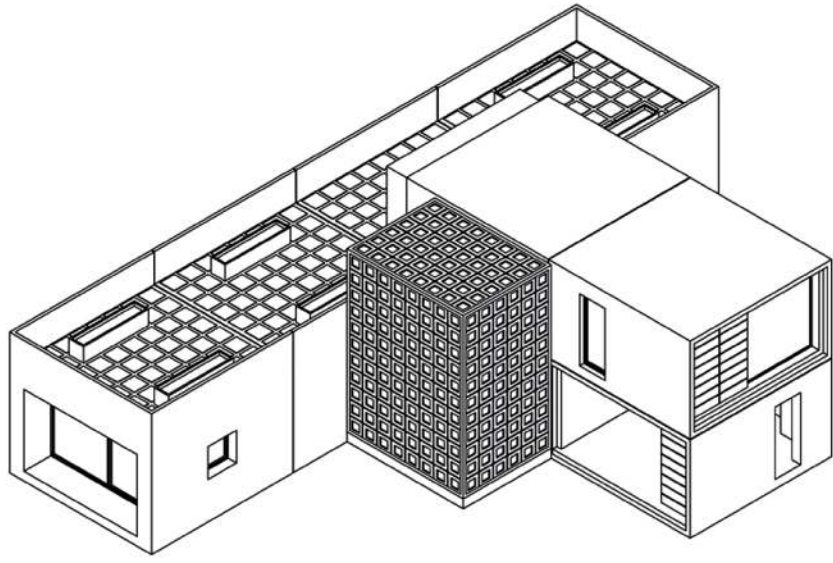
F1

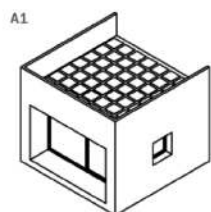
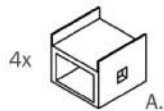




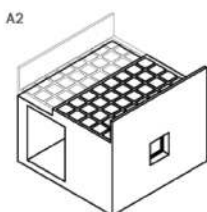




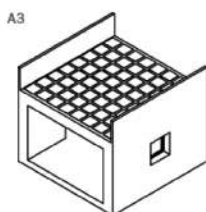




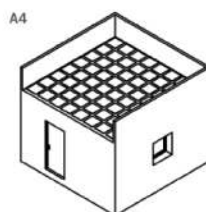
Cucina/ Sala da pranzo



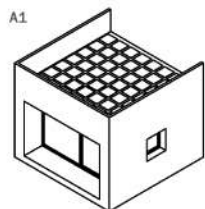
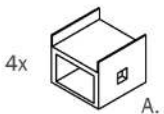
Corridoio + Bagno
(stanza 180 x 460)



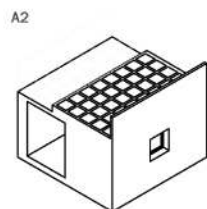
Salotto



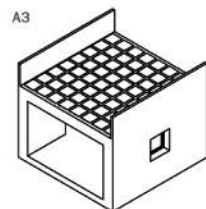
Camera da letto
(stanza 400 x 385)



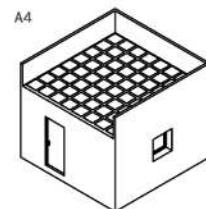
Kitchen / Dining Room



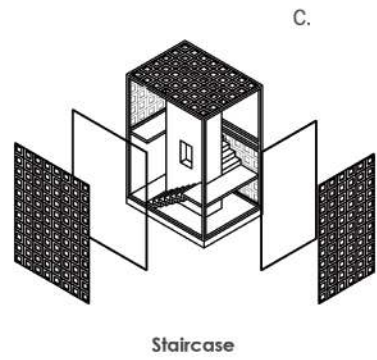
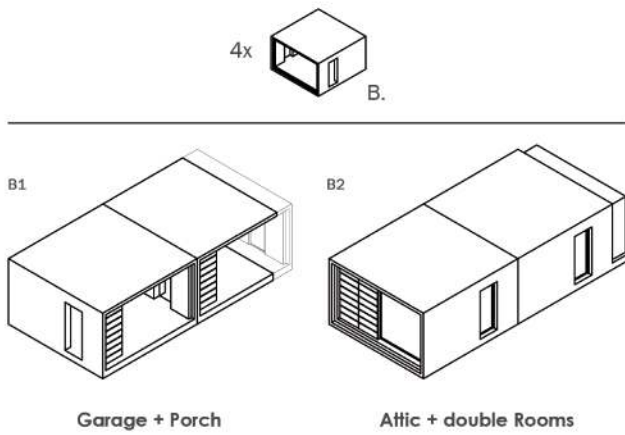
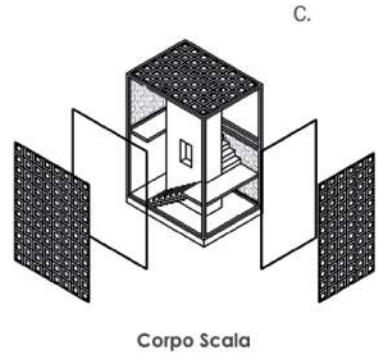
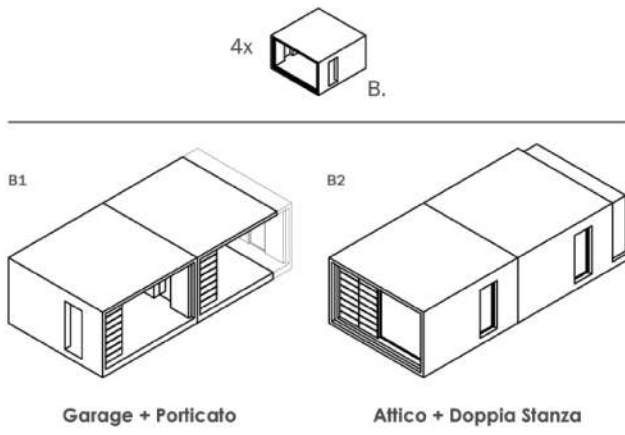
Hallway + Bathroom
(180 x 460 Room)

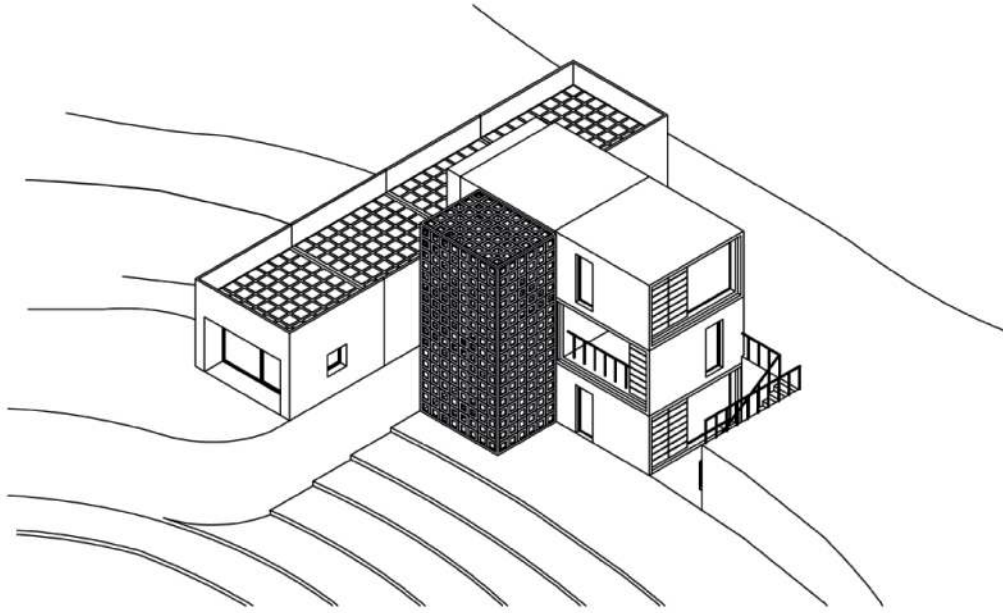


Living Room

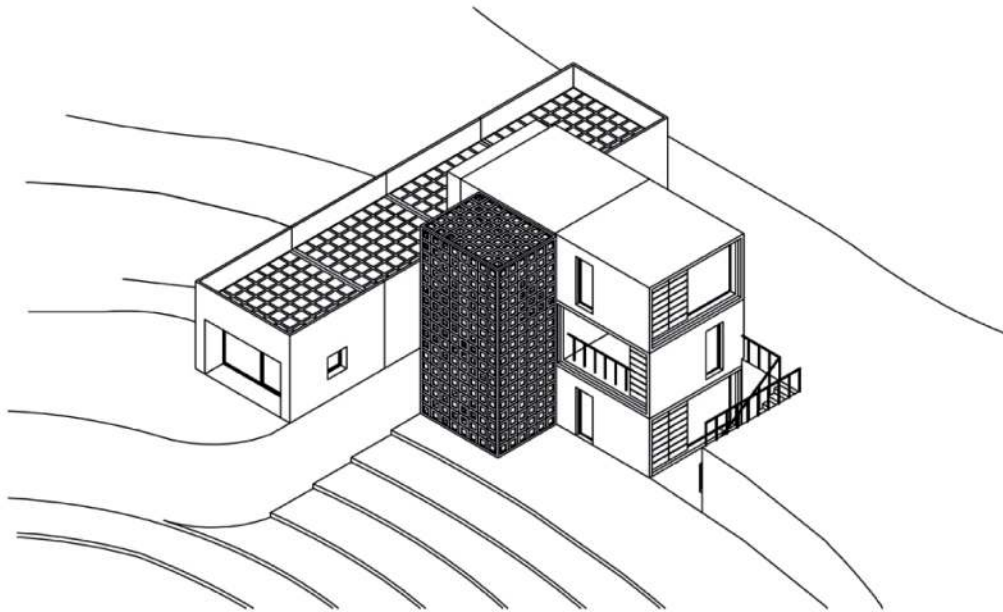


Bedroom
(400 x 385 Room)

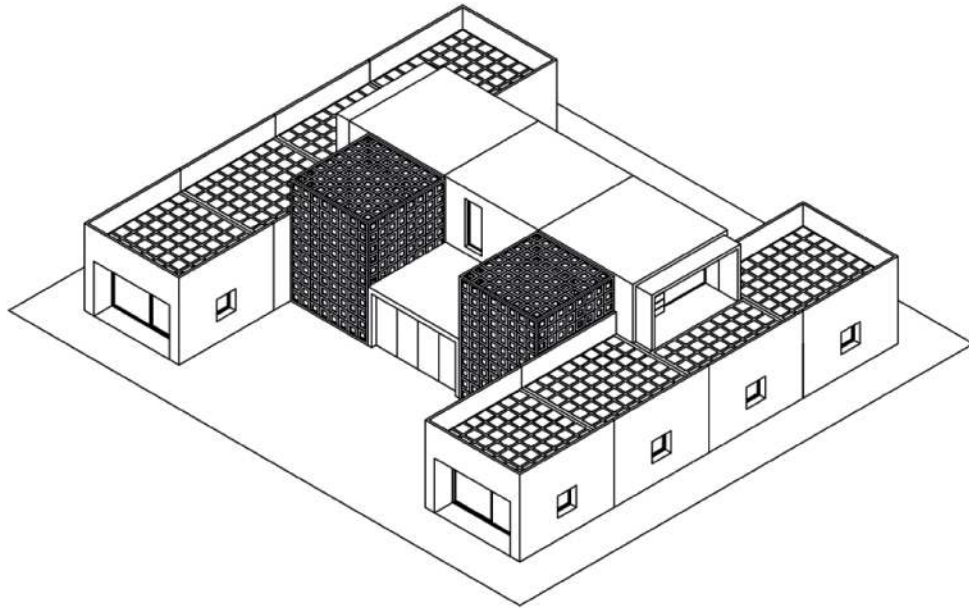




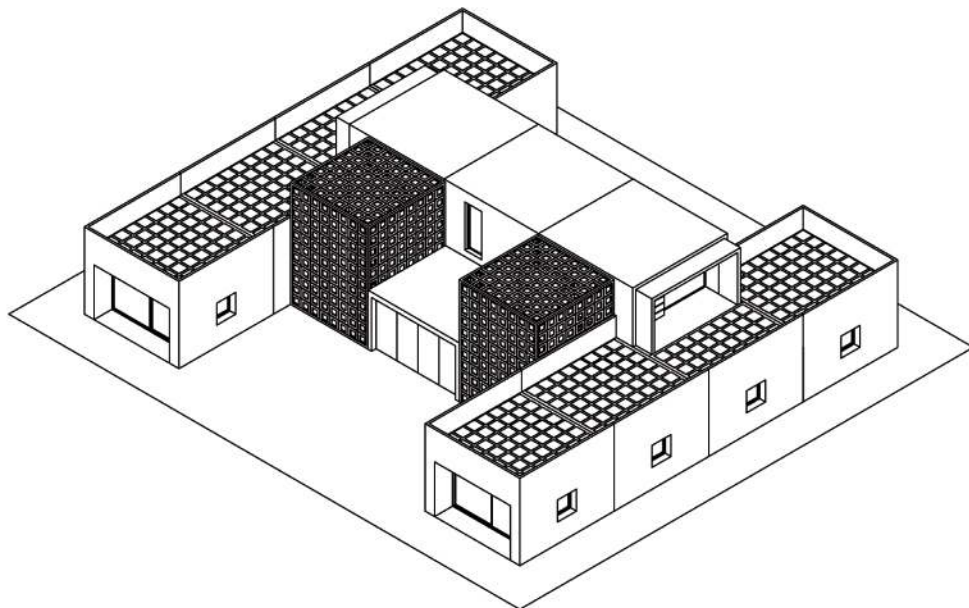
Possibilità di un'espansione "VERTICALE" grazie al corpo scala estendibile, servendosi di ulteriori Modulari B.



Possibility of "VERTICAL" expansion thanks to the extendable staircase structure, using Modulars B.



Possibilità di "RADDOPPIARE" lo spazio iniziale mediante lo sviluppo di una struttura simmetrica. Il problema della gestione dello spazio è risolto espandendo il corpo scala (al fine di creare un corridoio) ed introducendo un modulare aggiuntivo al piano terra



Possibility of "DOUBLING" the initial space through the development of a symmetrical structure. The issue of space management is solved by expanding the staircases (to create a corridor) and introducing an additional modular on the ground floor













AZTECO

AZTECO is a modular system characterized by two "modular" structures defined by a "sculpted" geometry: a longitudinal (composed of MODULAR A) and a vertical (composed of MODULAR B), both connected by a glass staircase with sunshades (MODULAR C).

- 2
- 2
- 1
- 1-4

30m x 40m
157,30 mq

Feasibility of "VERTICAL" expansion thanks to the extendable staircase structure, using Modularity B.

Feasibility of "SOBBING" the initial space through the development of a geometrical structure. The issue of space management is solved by expanding the staircase (by creating a corridor) and introducing an additional modular on the ground floor.

Kitchen / Dining Room

Hallway + Bathroom

Living Room

Bathroom

Garage + Front Porch

Atrium + Double Room

Staircase



CODICE: LAB2018-7719c2
MOTTO: AZTECO - "NATURAL SIMPLICITY"

IL CONCORSO
INHAUS LAB
PROGETTA LA TUA
CASA MODULARE

AZTECO

AZTECO is a modular system characterized by two "modular" structures defined by a "sculpted" geometry: a longitudinal (composed of MODULAR A) and a vertical (composed of MODULAR B), both connected by a glass staircase with sunshades (MODULAR C).

- 2
- 2
- 1
- 1-4

30m x 40m
157,30 mq

Feasibility of "VERTICAL" expansion thanks to the extendable staircase structure, using Modularity B.

Feasibility of "SOBBING" the initial space through the development of a geometrical structure. The issue of space management is solved by expanding the staircase (by creating a corridor) and introducing an additional modular on the ground floor.

Kitchen / Dining Room

Hallway + Bathroom

Living Room

Bathroom

Garage + Front Porch

Atrium + Double Room

Staircase

CODICE: LAB2018-7719c2
MOTTO: AZTECO - "NATURAL SIMPLICITY"

IL CONCORSO
INHAUS LAB
PROGETTA LA TUA
CASA MODULARE

