

Green Dot Animo Leadership High School  
Inglewood, CA

*Green Dot Public Schools is leading the charge to transform public education in Los Angeles and beyond so that all children receive the education they need to be successful in college, leadership, and life. Green Dot envisions a public school system in L.A. made up of small, excellent schools that encourage and welcome parental involvement and opinions, support teacher creativity, and educate students at their highest and best levels-no matter what their background.*

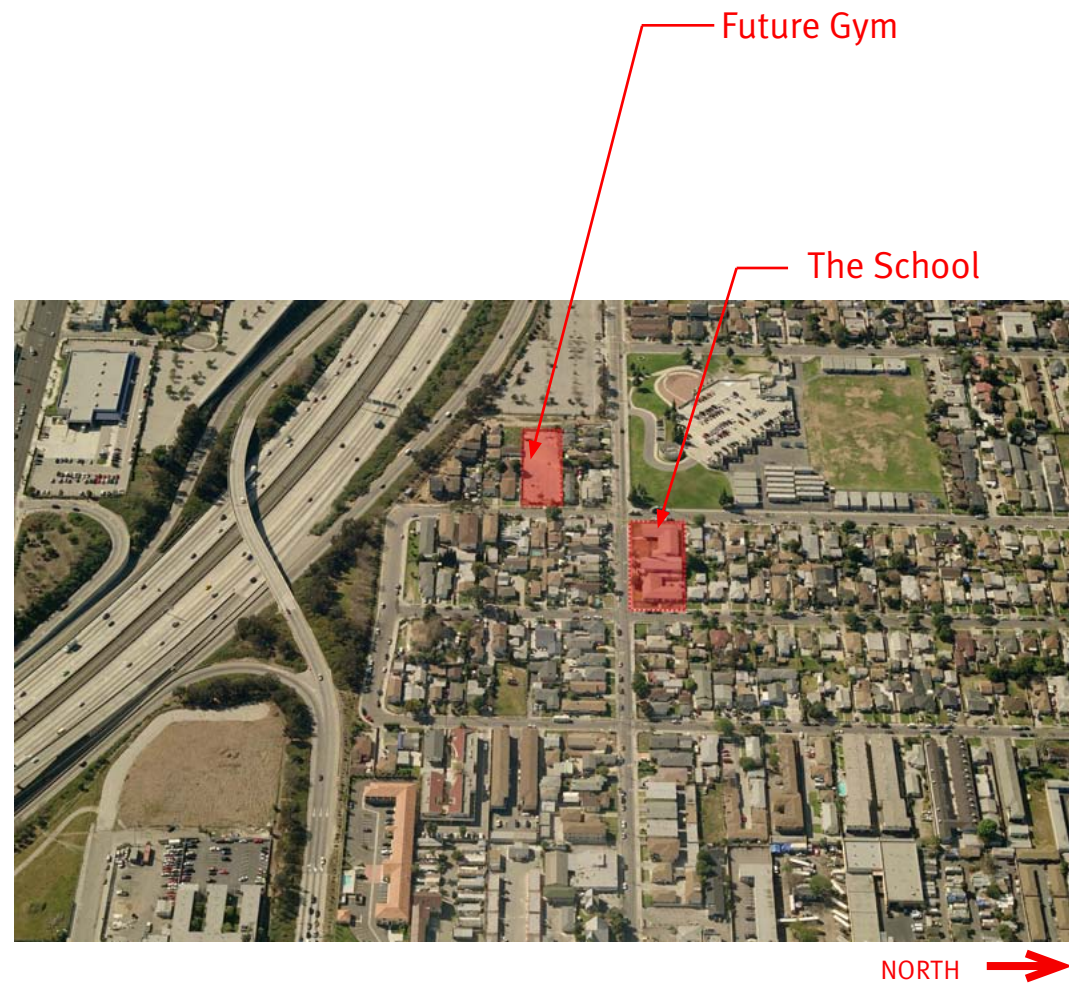
*Green Dot has built great high schools in Los Angeles to prove that urban high schools can be successful with the right model. In addition, Green Dot is working with LAUSD, the Mayor of Los Angeles and other political leaders, the State of California, the government, the general public, teachers' unions and other groups to influence the reforms required to improve the quality of urban schools in Los Angeles, and ultimately throughout the state and the nation.*

Existing Middle School

The Site

Neighborhood





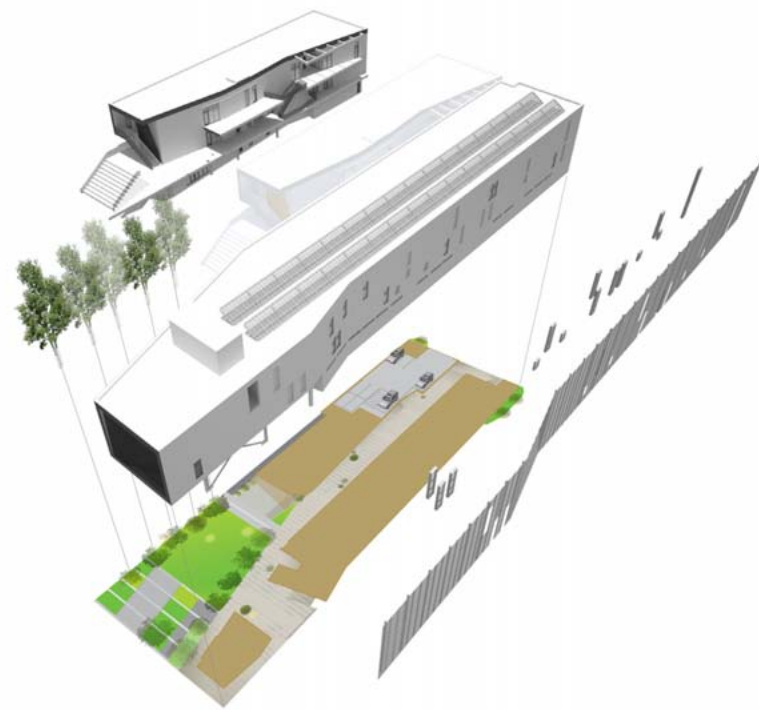
## The Site

Inglewood is the largest predominantly African-American city in California, with a population over 100,000. The history of this area is a rich one, characterized by African-American homeowners, tight-knit families and front porch culture. The area is famous for its contributions to the civil rights movement and was a central trouble spot during the 1964 Watts Riots. Fair Housing and school busing has plagued the city since the early 60's. The median family income is less than \$35,000/year and 25% of the population lives below the poverty level.

The new school facility is located adjacent to the 105 freeway and is almost directly under the flight path to LAX. The neighborhood consists of a mix of residential, industrial and institutional uses. It is considered one of the poorer neighborhoods in the Los Angeles area.







## History of Green Dot

Green Dot Public Schools was founded in 1999 by Steve Barr in direct response to the terrible state of public high schools in the Los Angeles area. LAUSD's high schools were failing to graduate more than 50% of their students, and those that were making it through were rarely prepared for college. The vast majority of the students falling out of the system were children from low-income families. Mr. Barr started Green Dot with a vision of leveraging charter schools as a tool in order to show the school district and the public at large that there was a more effective way to provide public education to young adults in the Los Angeles area. He felt that opening small, successful charter schools in which low income, high-risk youth were succeeding would not only provide a quality education to the students those schools served, but would also influence LAUSD and other school districts in the Los Angeles area to adopt the successful small-schools model for all of their schools.

## The Animo Leadership School

On August 21, 2000, Animo Leadership became the first Green Dot school to open its doors to a group of 140 pioneering students from the Lennox School District. This school started with one principal, a counselor, and five first-year teachers housed in a temporary school facility: leased law school classrooms at the University of West Los Angeles Law. Animo Leadership's success grew rapidly; it has grown to a full-sized school with an enrollment of 520 students. Its first graduating class was extremely successful, graduating 96% of its original 140 students, and sending 62% of its students to a four-year university. Animo Leadership has continued to achieve high levels of success; the school was ranked by US News and World Report as the #31 high school in the nation, also as the #4 charter high school in the nation. This project will be the first non remodel, newly constructed school for the Green Dot organization.



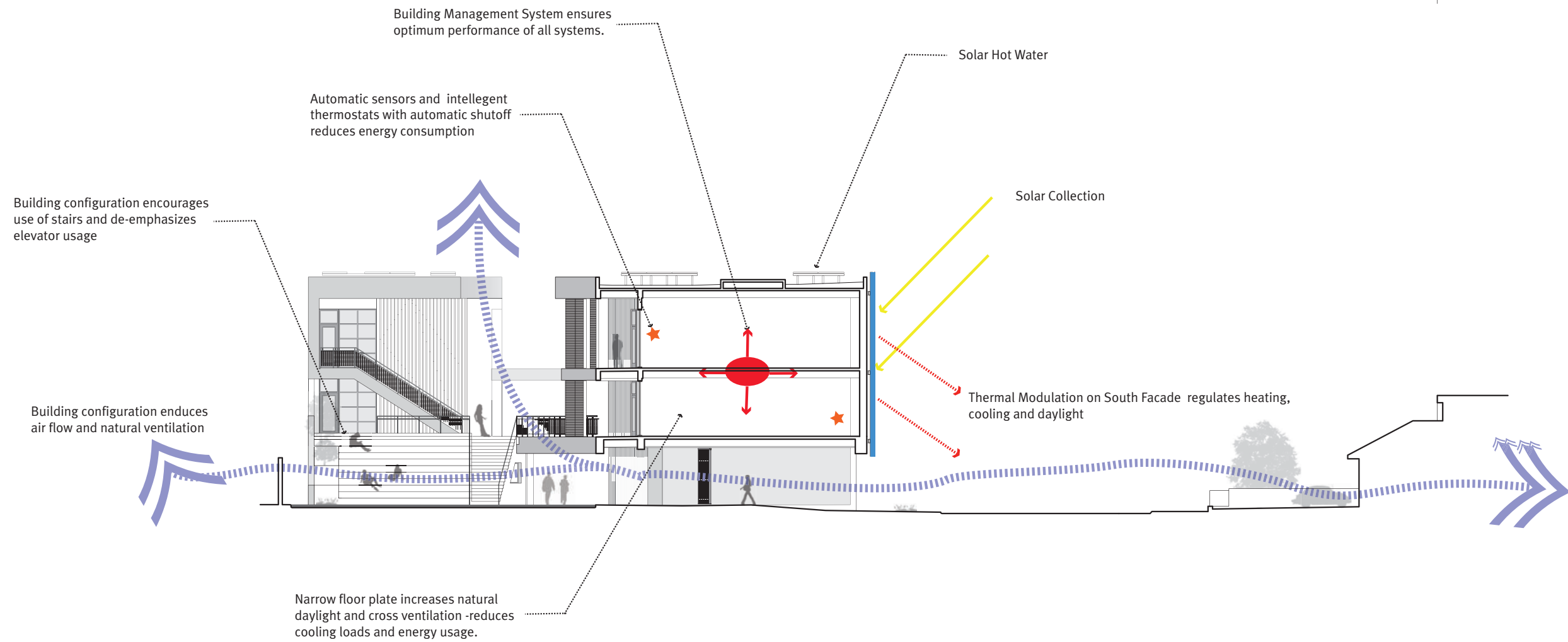
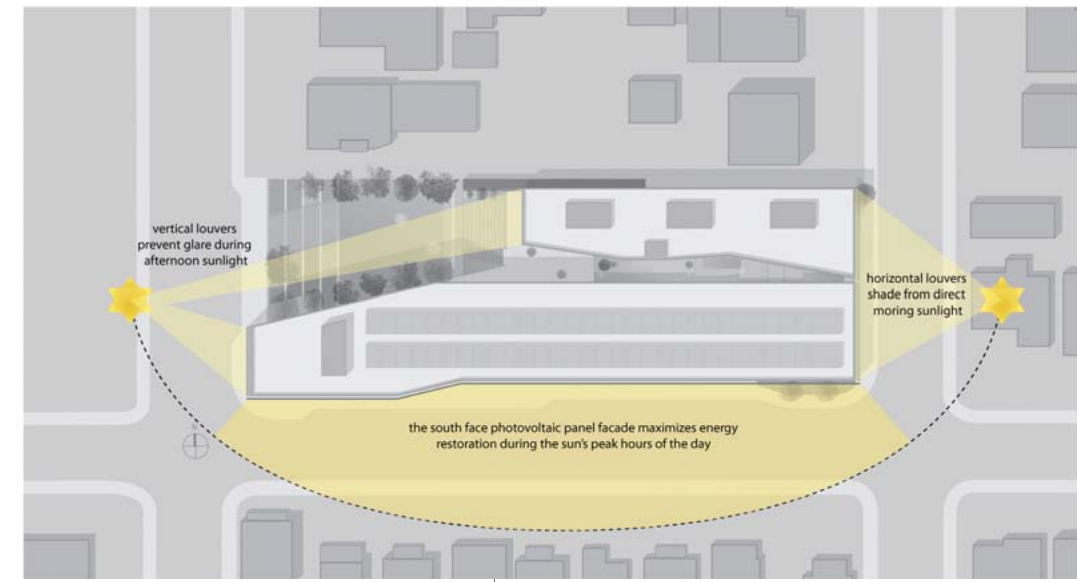
## The New Facility

Working within an extremely tight budget and construction schedule, the new 520-student 52,000 square foot high school will set the standard for high schools in Southern California. With 650 solar panels built into the main (south) facade, the Animo Leadership High School will be the first public school in the country to provide 100% of its own energy needs.

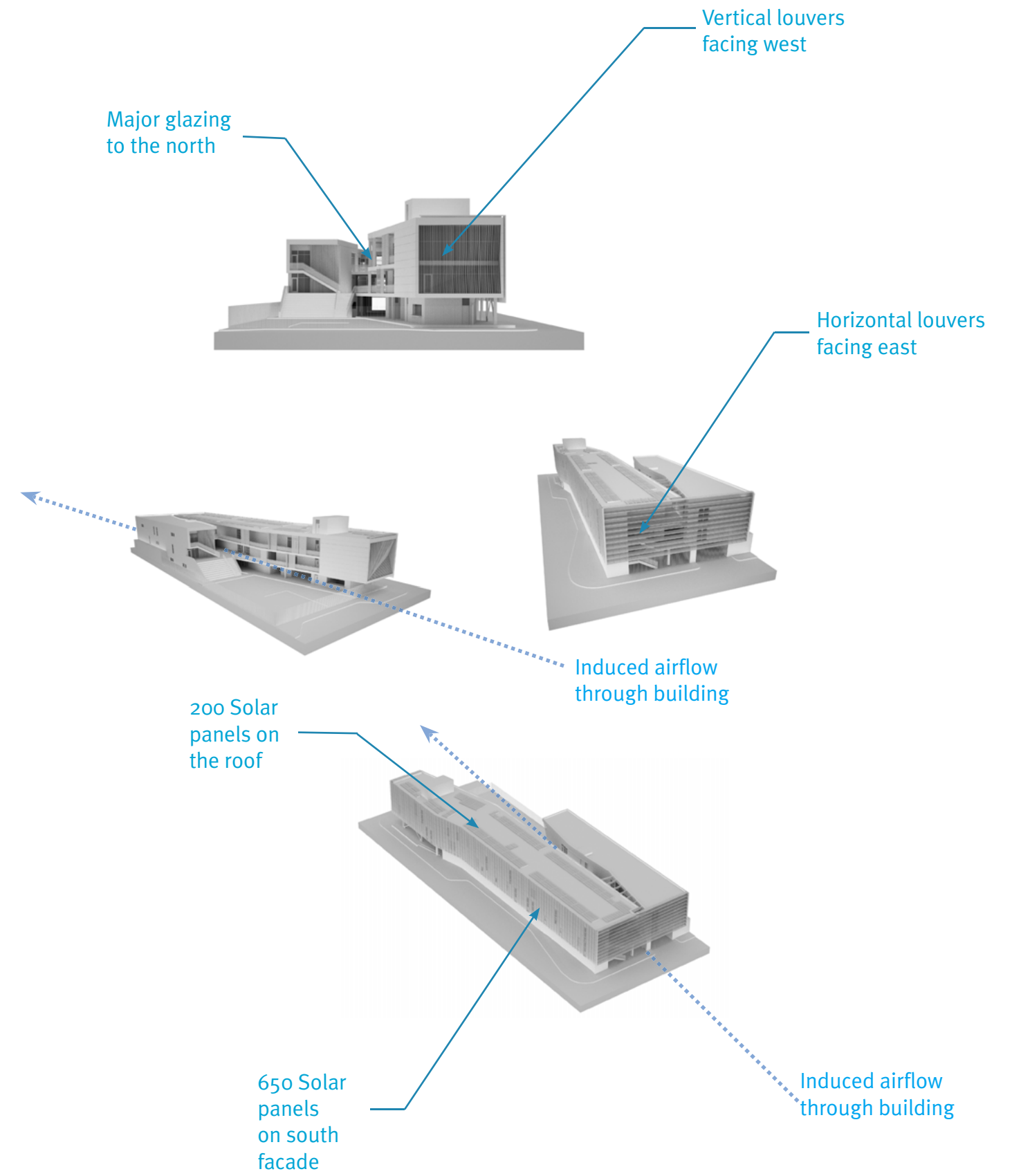
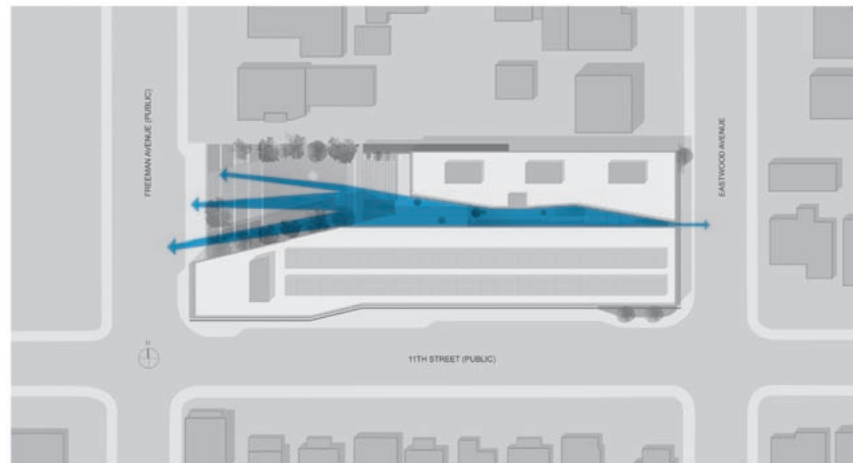
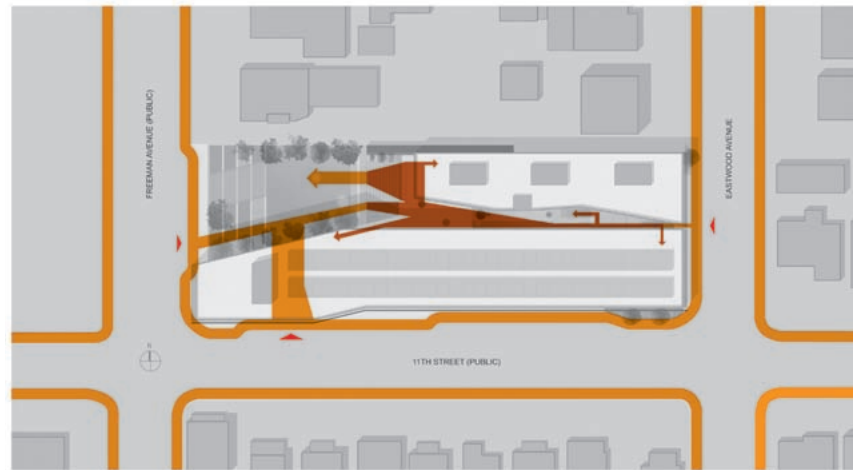
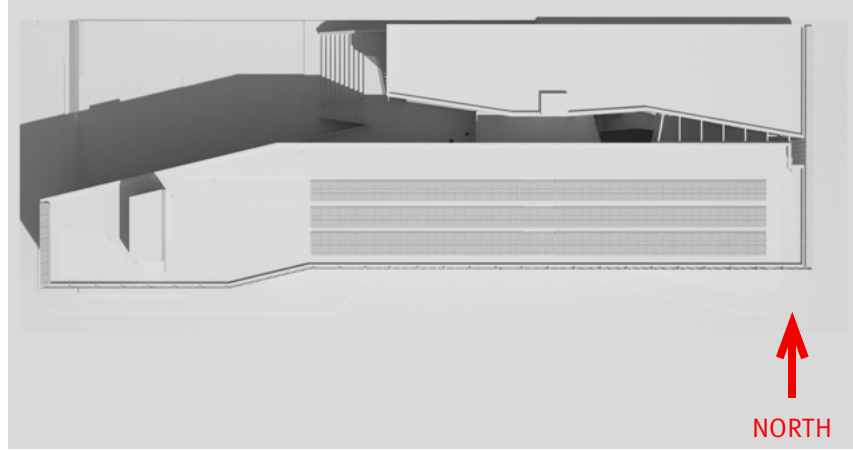
The Animo Leadership High School distinguishes itself from most conventionally developed projects, in that it incorporates energy-efficient measures that exceed standard practice, optimize building performance, and ensure reduced energy use during all phases of construction and occupancy. The planning and design of The Animo Leadership High School emerged from close consideration and employment of passive solar design strategies. These strategies include: locating and orienting the building to control solar cooling loads; shaping and orienting the building for exposure to prevailing winds; shaping the building to induce buoyancy for natural ventilation; designing windows to maximize daylighting; shading south-facing windows and minimizing west-facing glazing; designing windows to maximize natural ventilation; shaping and planning the interior to enhance daylight and natural air flow distribution.



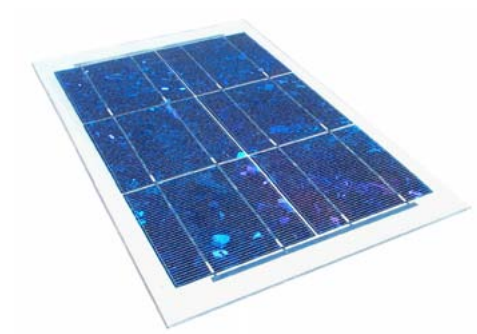










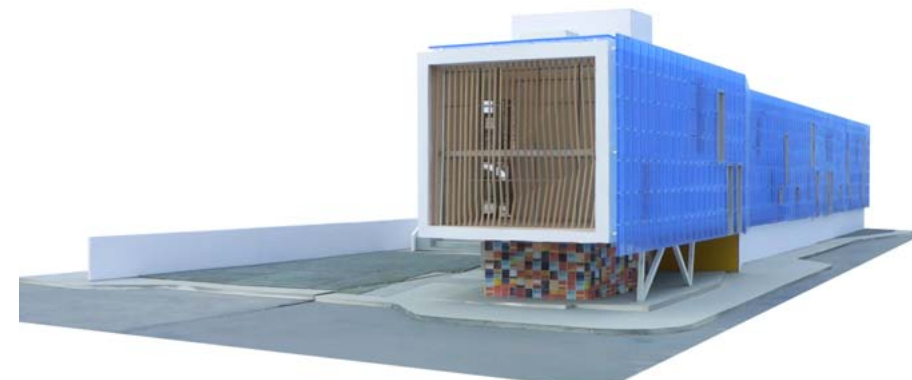
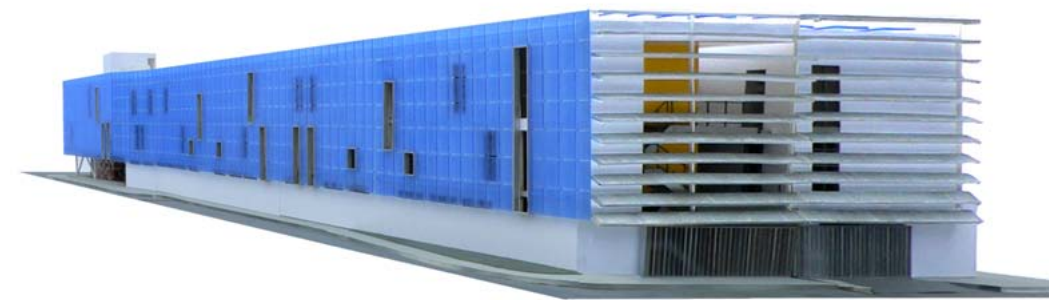


## The Solar Wall

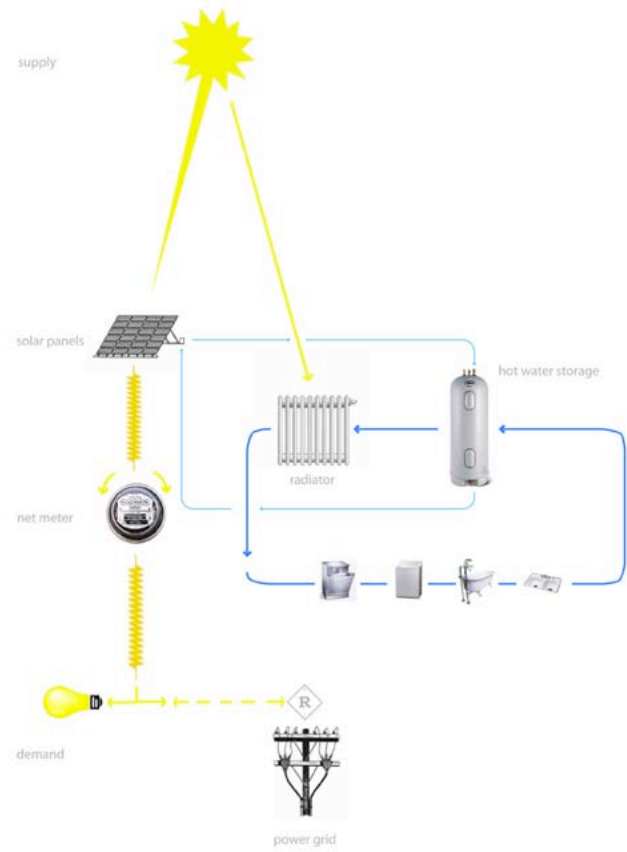
The 650 Solar panels built into the south facade will produce nearly 100% of the building's energy, and will reduce carbon-dioxide emissions by more than 3 million pounds.

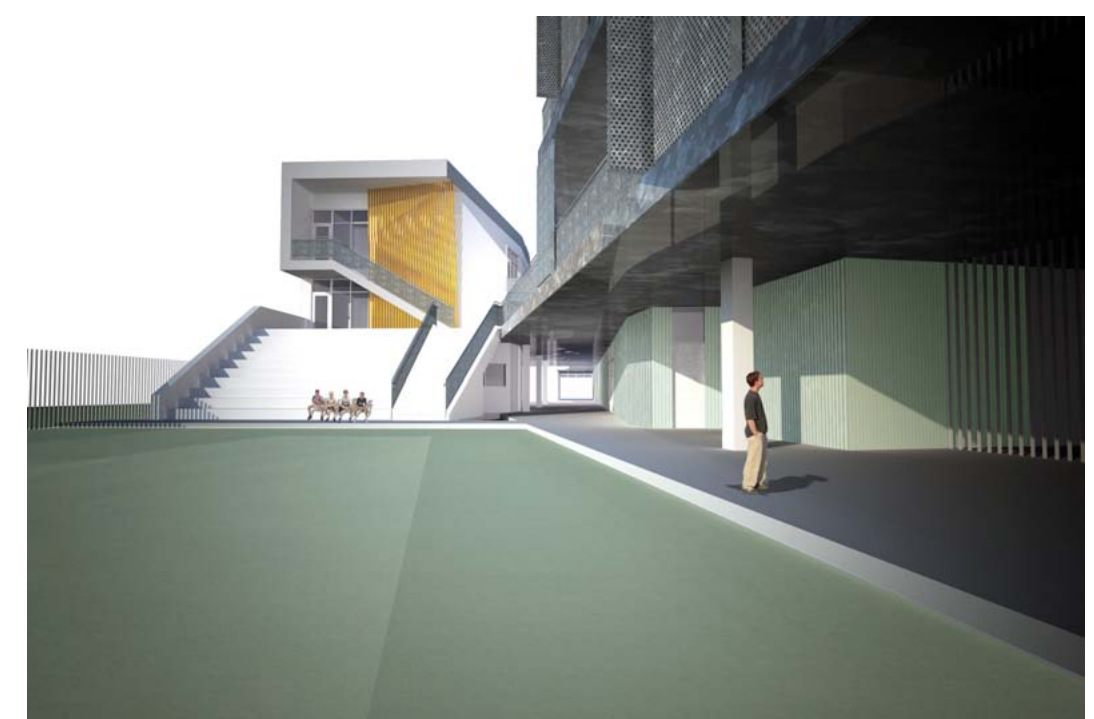
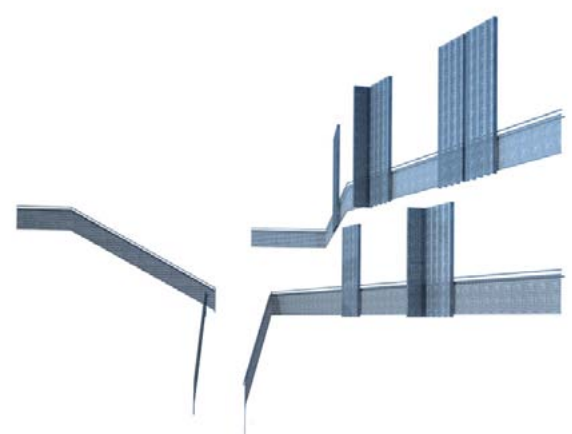
The heat-stacking effect induced by the placement of the panels will also provide enhanced natural ventilation and cooling of the building.





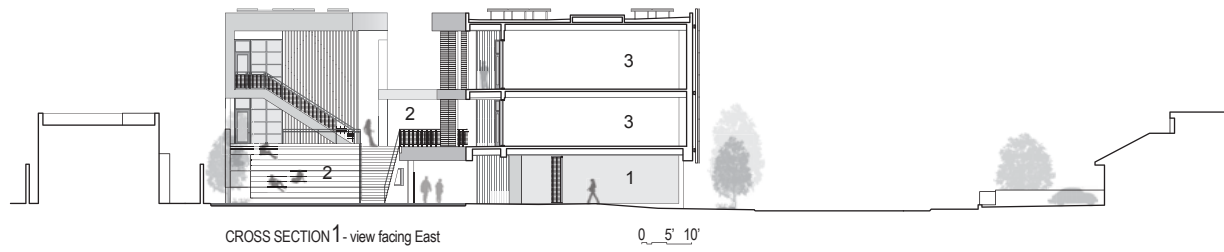
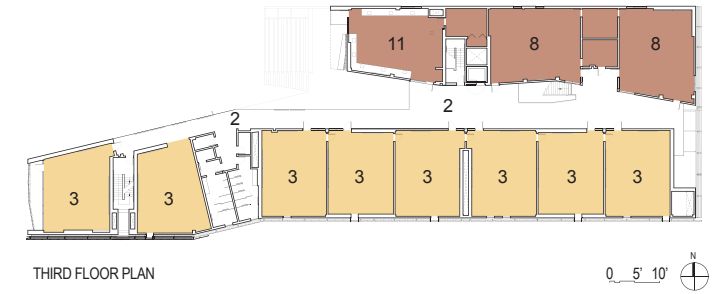
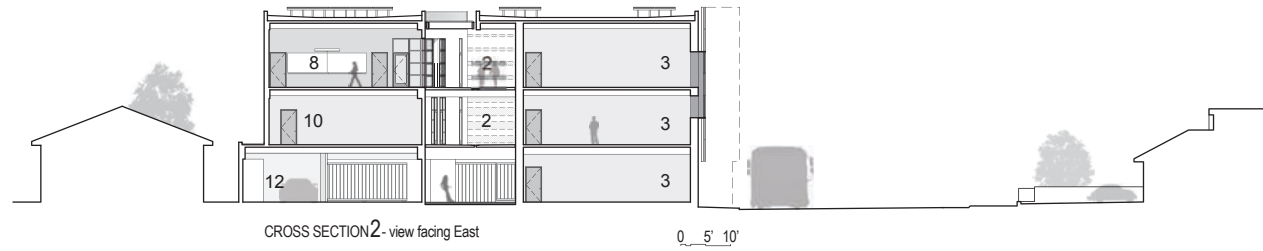












**ROOM KEY**

- |                   |                          |                                  |
|-------------------|--------------------------|----------------------------------|
| ① ENTRY COURT     | ⑤ ADMINISTRATION OFFICES | ⑨ COMPUTER LAB                   |
| ② OUTDOOR TERRACE | ⑥ FOOD SERVICE           | ⑩ MEDIA LIBRARY / COLLEGE CENTER |
| ③ CLASSROOM       | ⑦ NURSE                  | ⑪ CHEMISTRY LABORATORY           |
| ④ MUSIC ROOM      | ⑧ SCIENCE LABORATORY     | ⑫ PARKING                        |



## **Animo Leadership High School Project Details**

Project's Formal Name: GreenDot Animo Leadership High School  
Location of Project: Los Angeles County, CA – Lennox School District  
Client/Owner: GreenDot Public Schools  
Total Square Footage: 53,000 sq. ft.  
Completed: 2012  
Cost: \$14,300,000.00(US)

Architects: BROOKS + SCARPA (*formerly Pugh + Scarpa*)  
Location of Architect: 4611 W. Slauson Ave  
Los Angeles, CA 90043

Project Team: Lawrence Scarpa, FAIA - Principal- in-Charge.  
Peter Borrego, Angela Brooks, AIA, Mark Buckland, Project Architect, Brad Buter, Silke Clemens, Emily Hodgdon, Ching Luk, Gwynne Pugh, Sru Sumantri - Project Design Team.

Engineering: Thorton Thomasseti-Structural, E2DI-  
Mechanical Electrical and Plumbing,  
Veneklaussen-Acoustical, Barbara Hall-Civil

General Contractor: Telecu

Photography: Brooks Scarpa