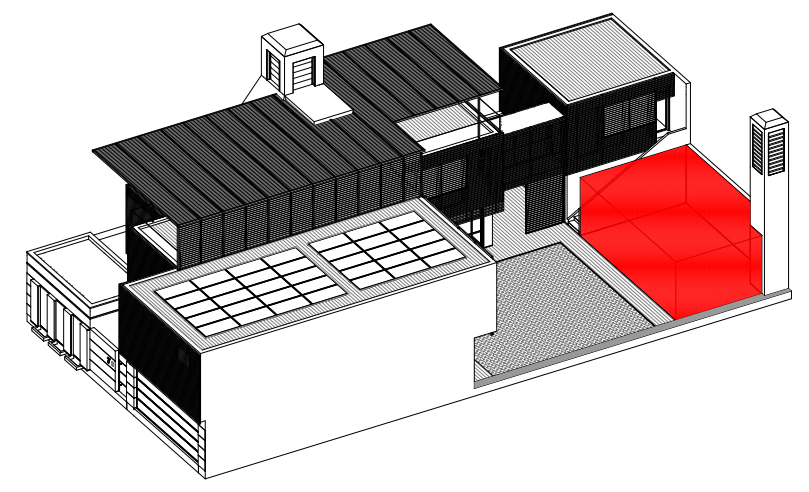
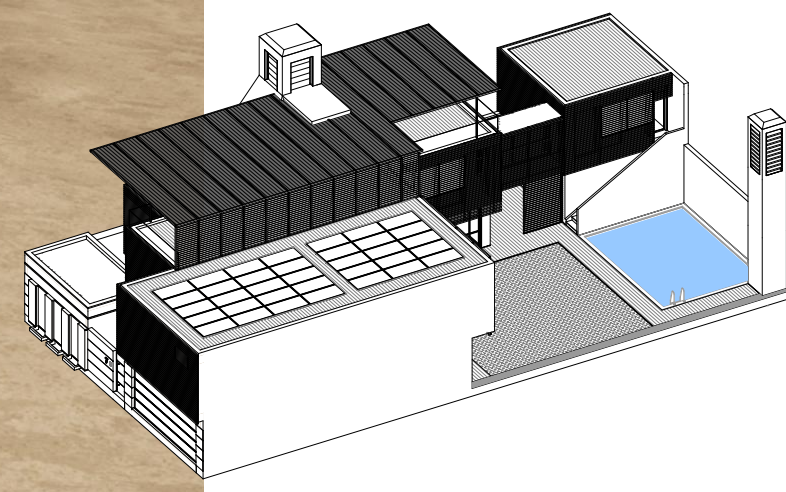
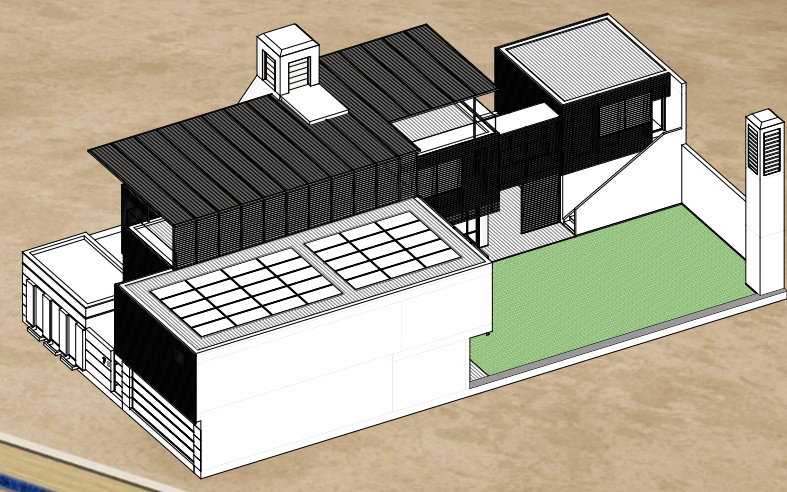




- floating WPC floor
- waterproofing membrane
- graphite insulation board
- WPC cladding
- sun screen
- roller blind
- sliding aluminium door with triple selective glazing units
- plaster
- brick external counter-wall
- graphite insulation board
- structure
- plaster



The house is equipped with several outdoor spaces. There is an entrance patio, the "jasmine garden" facing the majlis, a separate courtyard for household chores, a large pergola with an outdoor lounge and the actual garden. This one is designed as a modern Arab garden with a fountain, fruit trees and palms (for shading the inner façades of the building too). But also other scenarios are foreseen for the garden: a simple green lawn, a swimming pool or the extension for a recently married couple. Last but not least, on the rooftop we can find a huge terrace with a breathtaking panoramic lounge, a solarium and the Jacuzzi.



HOUSE OF THE FUTURE