

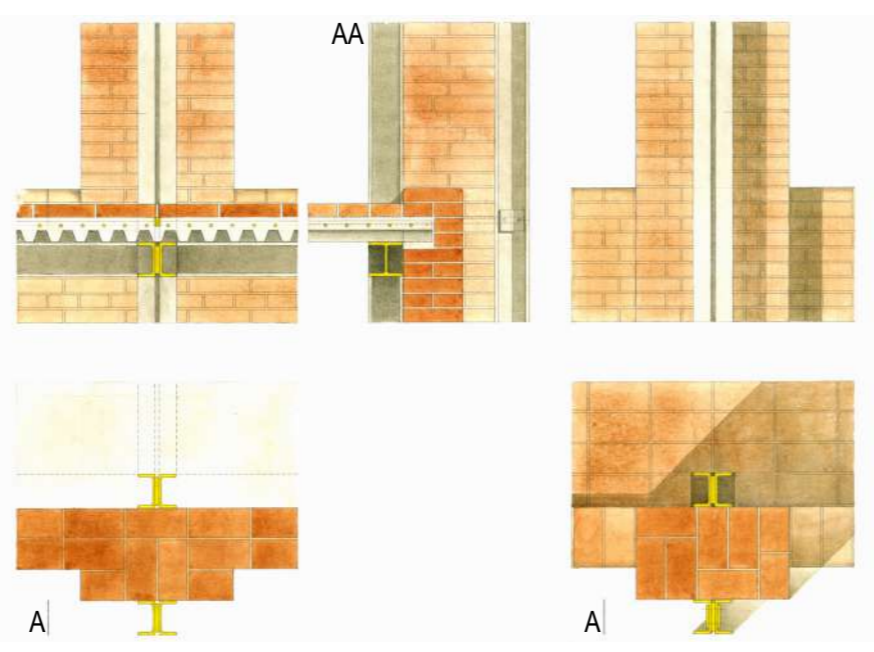
'Casazza' farmer factory rehabilitation. A new Landscape Study Center in Emilian countryside, Ferrara (Italy). Renew by evoking memory



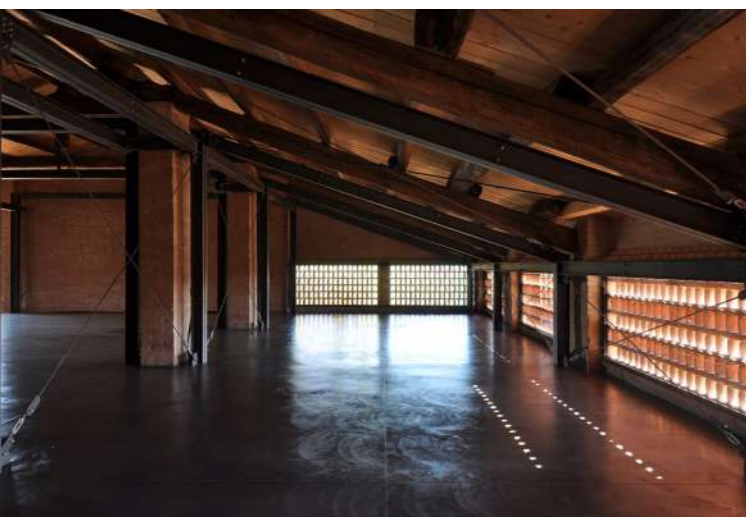
Double-height side sleeve towards the east; recovery of the original space, with the new metal frames interspersed with wall quadrants marked by vertical cuts towards the internal courtyard



Post-operam west profile, with the new wall diaphragms ("gelosie") recomposed between the existing pillars and the new reconstructed completion pavilion (on the left)



Details of the anchoring of the new metal frames to existing pillars (pencil and watercolor drawing)

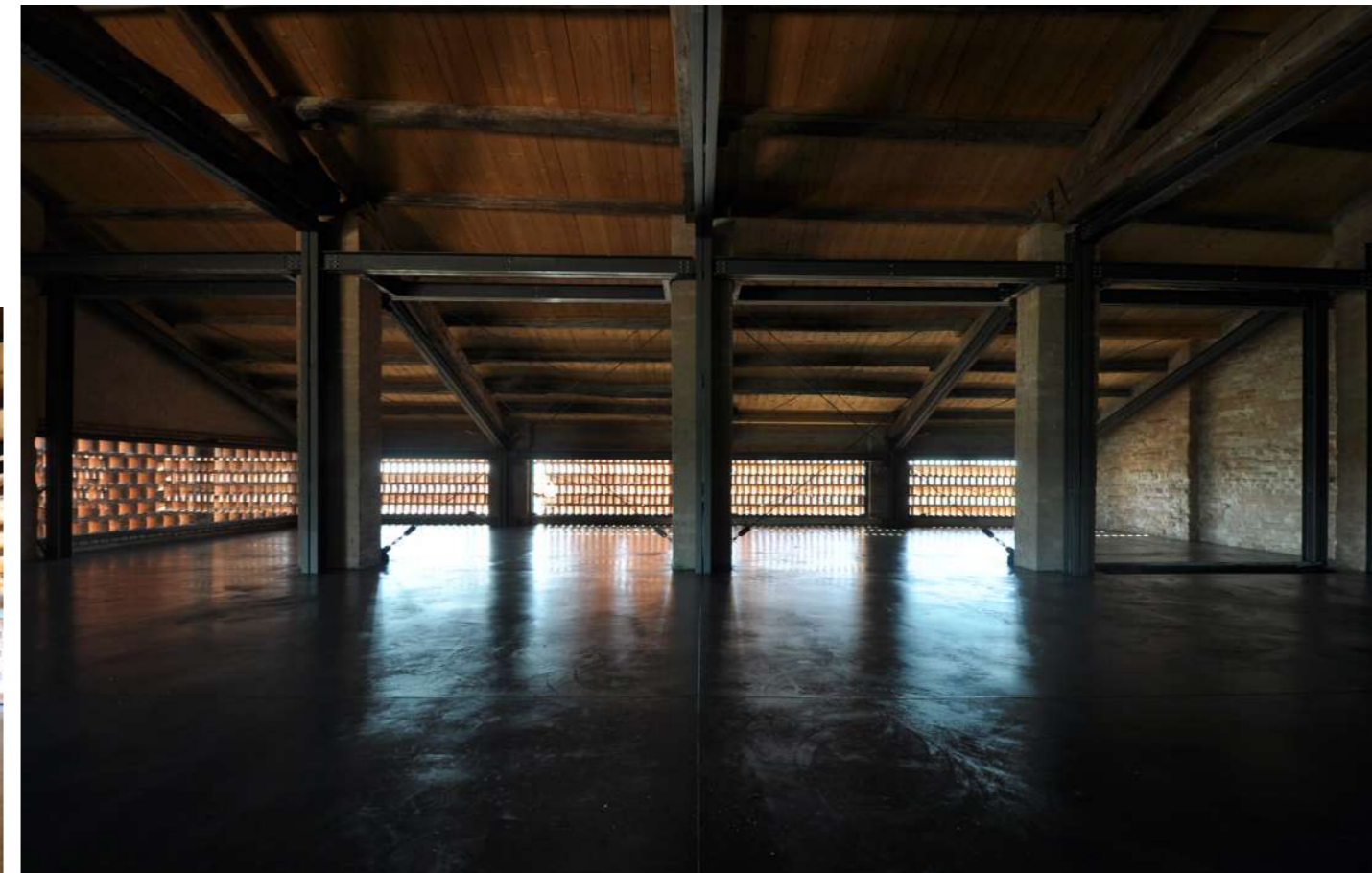


Recovery of the original space, on the upper floor, with the insertion of new metal frames and the recomposition of the external wall tissues ("gelosie") in facing bricks



Natural light modulation inside the recovered volumes

The new insertions, chromatically neutral and with a minimal appearance, exhibit **the silent commentary on the ancient envelope** that welcomes them. The vibrant visual-luministic narration projects and weaves on walls and floors, becoming a spatial stamp of the recovered building.



In the upper floor the light dominates: where once there was the barn, an open, flexible space now extends, marked by trajectories of natural light draw by the recomposed wall diaphragms