

THE TWIST

NANJING ART CENTER

Location: Nanjing, China

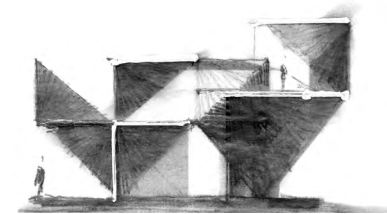
Project Year: 2019

Floor Area: 1,176 sqm

Building Height: 11.75m

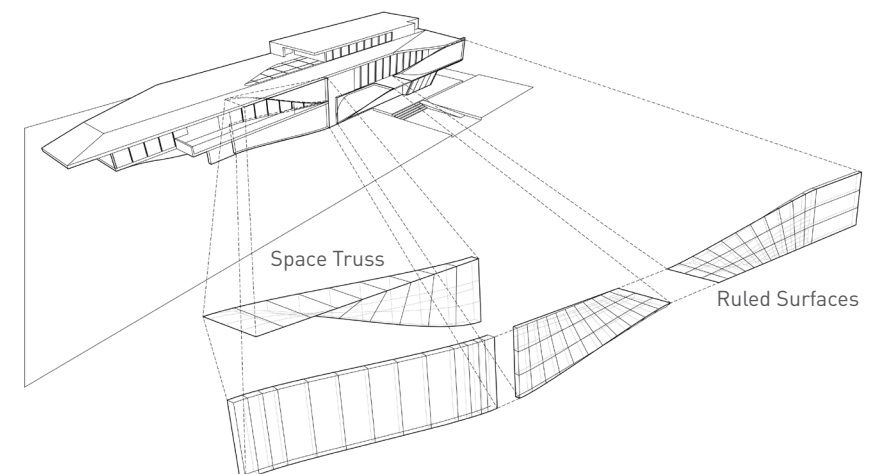
Number of Floors: 2

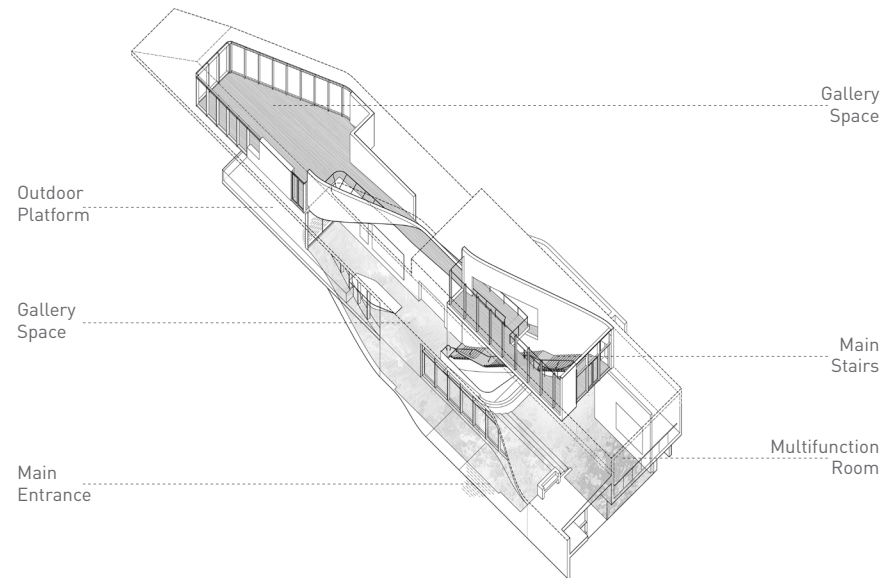
Program: Gallery



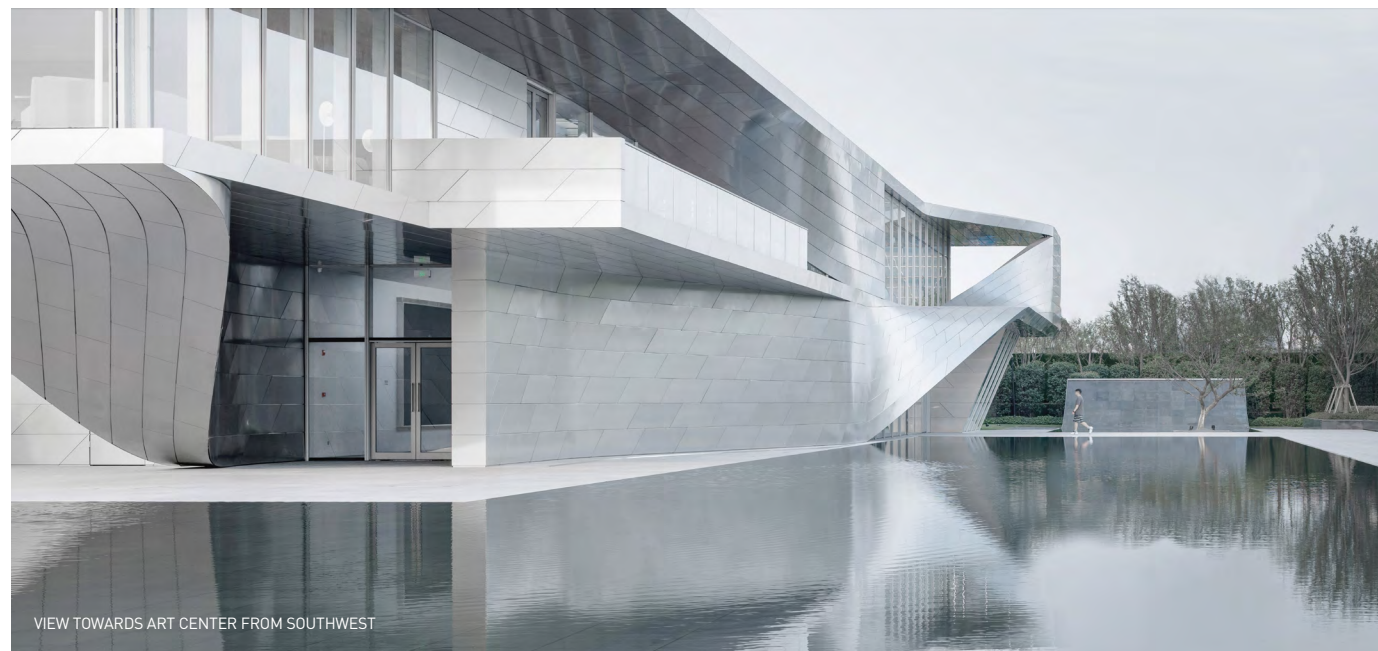
Located at the edge of a residential neighborhood, the Nanjing Art Center is intended to create a new civic and cultural landmark for the community. The design is based upon a series of twisting linear elements that combine “wall” and “floor” into series of singular gestures articulated as ruled surfaces. These folding walls encase the building’s program and generate a series of dynamic and interlinked public spaces that promote exploration and interaction.

By applying a limited number of ruled surfaces and emphasizing the interstitial zones between them, the building can be understood as sequence of connected spaces. The interior architectural experience is linear in nature (driven by the surfaces) and creates a series of dynamic spaces from which to access the building’s artistic program. Every major architectural element in the building, including the main public stair and exhibition skylight, arises from the original architectural response.

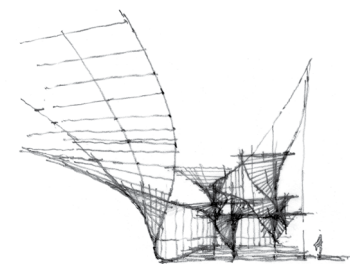




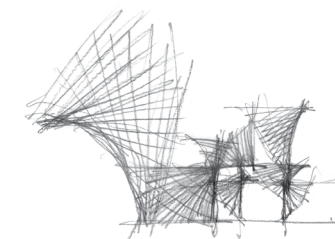
AXON



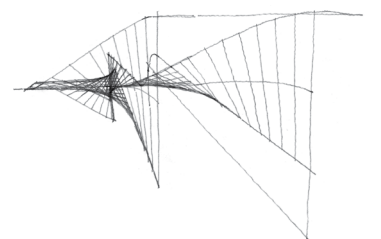
The design concept originates from a series of sinuous folding walls which twist ninety degrees in section to combine "wall" and "floor" into a single gesture. This process of turning and folding generates rich spatial experiences, connects interior and exterior, and turns the building into a unified and complete form. The experience of wandering between these spaces shares a spiritual connection with the experience of lingering in traditional eastern gardens. By applying a limited number of sinuous geometries and a clearly defined circulation strategy, the building can be understood as a contemplative sequence of connected spaces.



CONCEPT SKETCH



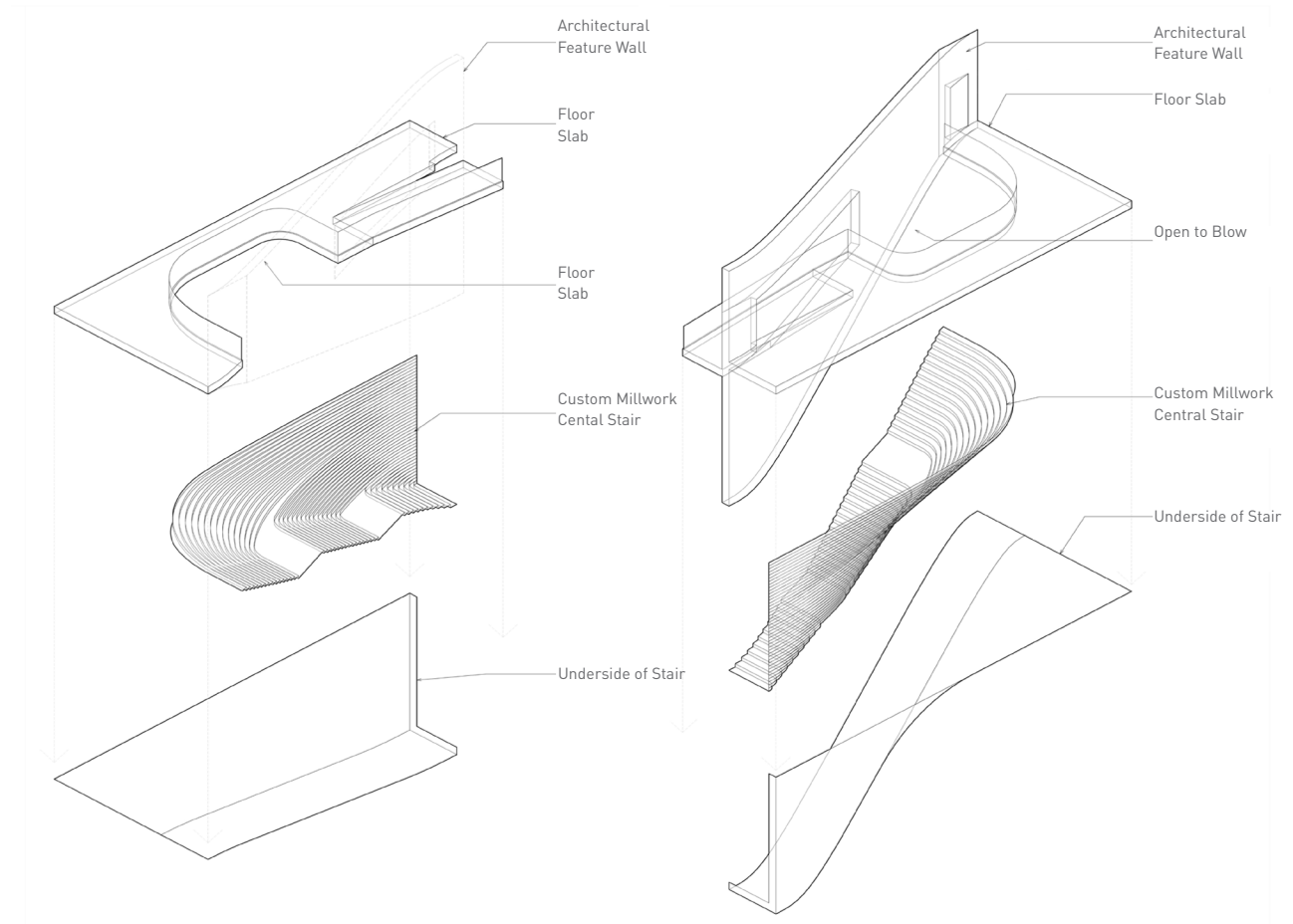
CONCEPT SKETCH



CONCEPT SKETCH

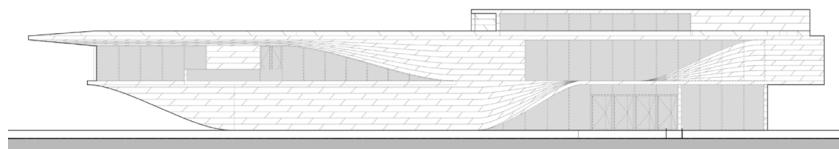


INTERIOR & EXTERIOR

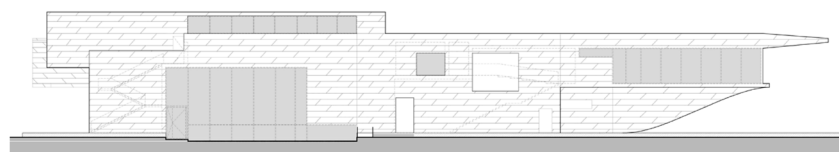


THE MAIN STAIRS AXON

South Elevation



North Elevation

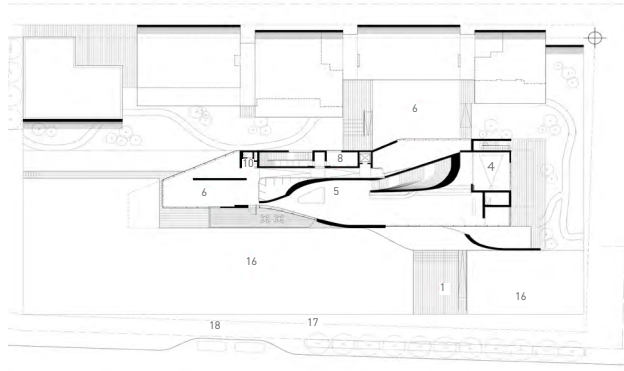


The exterior skin of the building is clad with parametrically designed stainless steel panels, while the interior surfaces are defined by a palette of wood and metal that extends the material strategy of the exterior form.

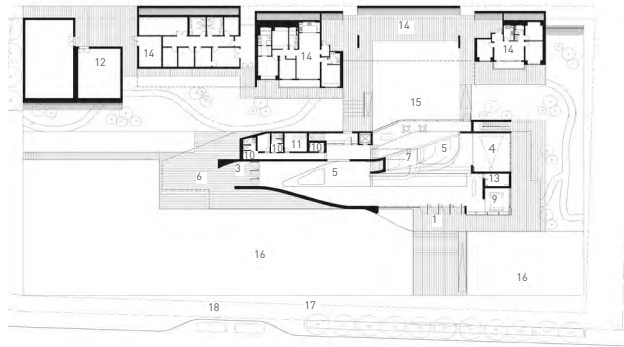
The metallic form of the project promotes a sense of technology and optimism in line with the aspirations of the surrounding urban neighborhoods.



ELEVATION DETAIL



2F Floor Plan



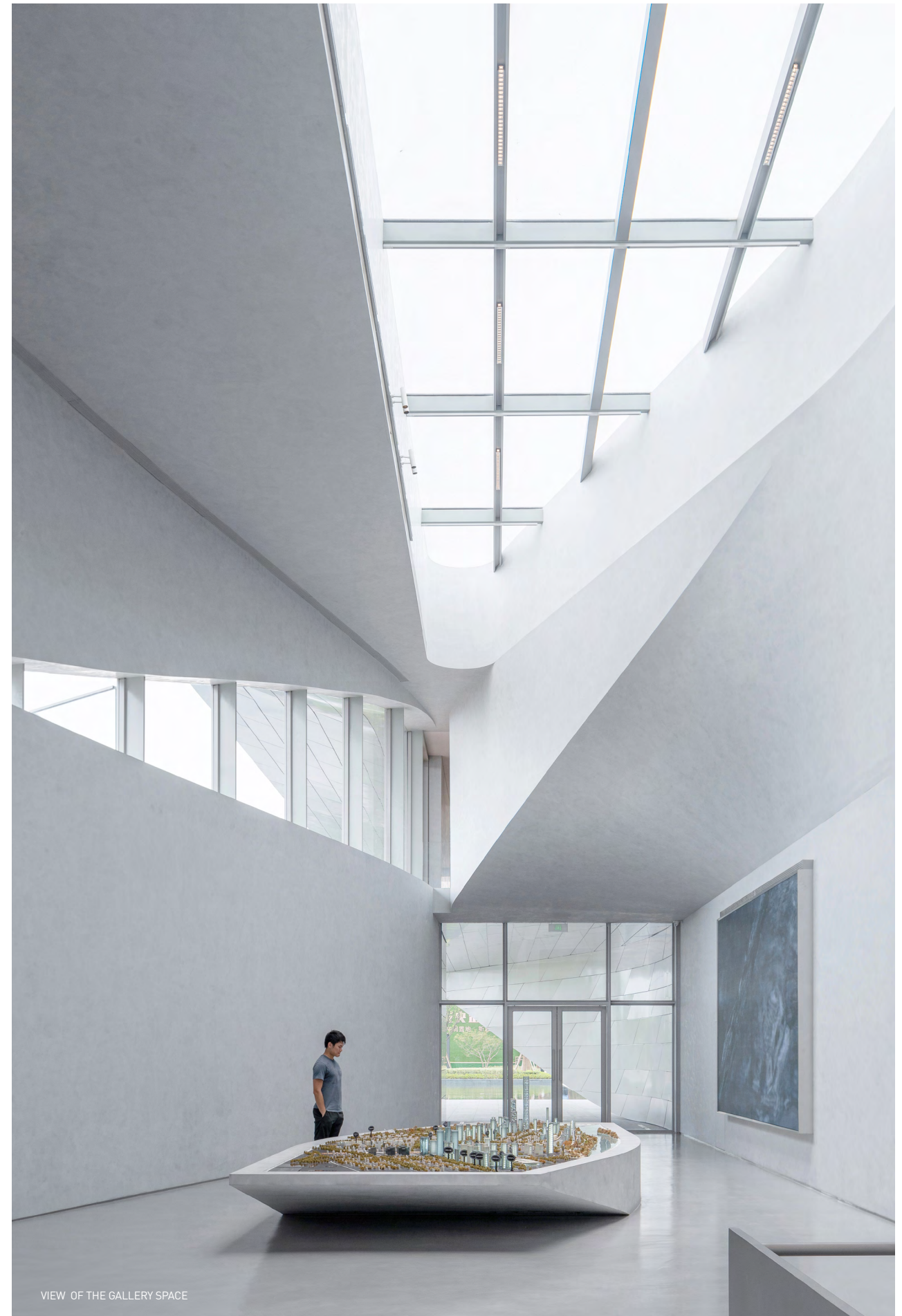
1F Floor Plan

- | | |
|---------------------|---------------------|
| 1. Main Entrance | 10. WC |
| 2. Reception | 11. MEP Room |
| 3. Service Entrance | 12. Conference Room |
| 4. Multimedia Room | 13. Storage |
| 5. Exhibition Area | 14. Show Room |
| 6. Outdoor Platform | 15. Main Courtyard |
| 7. Service Bar | 16. Reflection Pond |
| 8. Office | 17. Shady Path |
| 9. VIP Room | 18. Drop Off |

The vertical space of the Nanjing Art Center volume allows for many unique spatial zones rooted in the building concept. This is can be seen in three spaces. The first spatial zone finds expression in a double-height gallery space that exists at the intersection of multiple linear “ribbons”. This space is capped with a skylight that floods the space with natural light.



VIEW OF THE SKYLIGHT

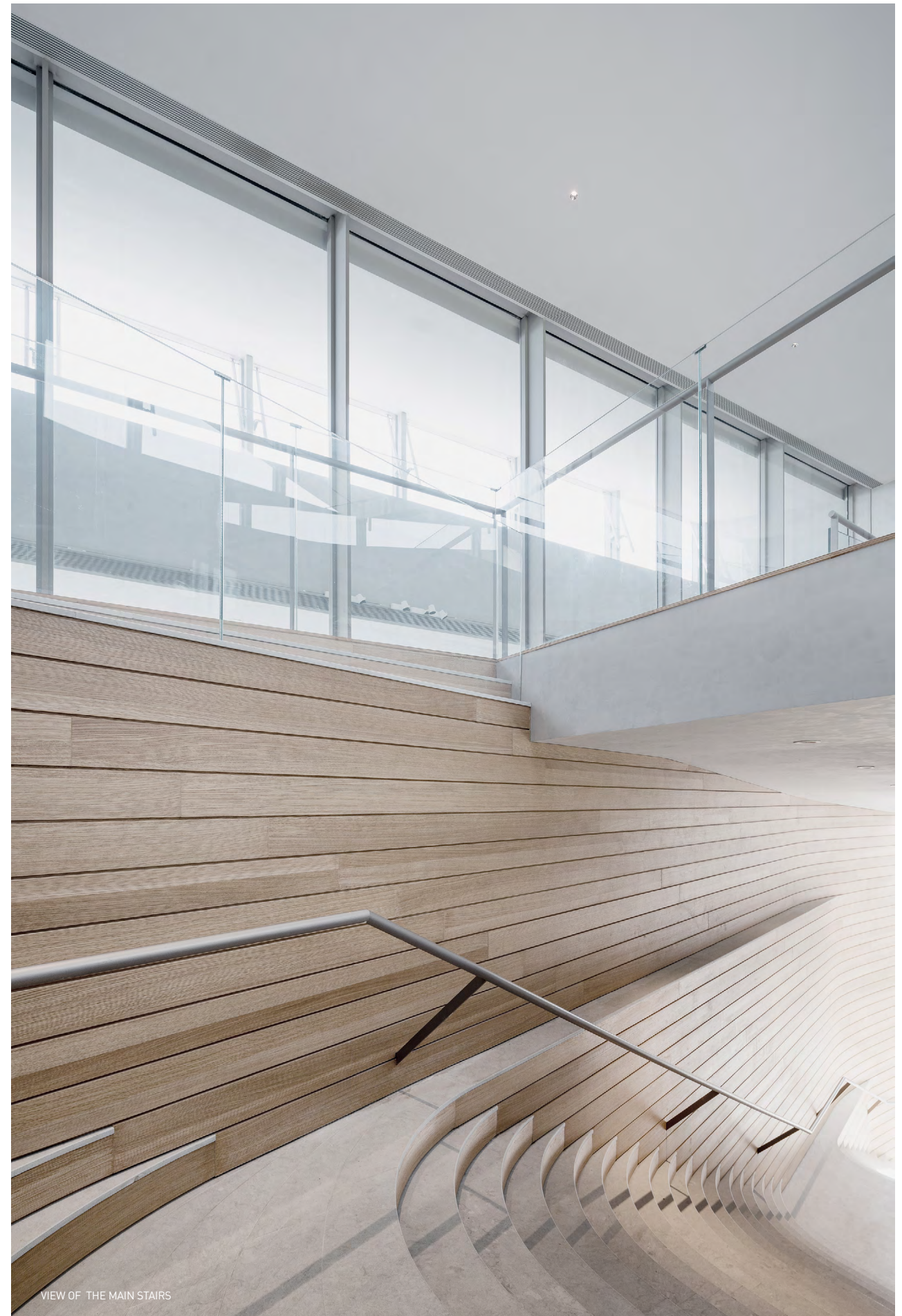
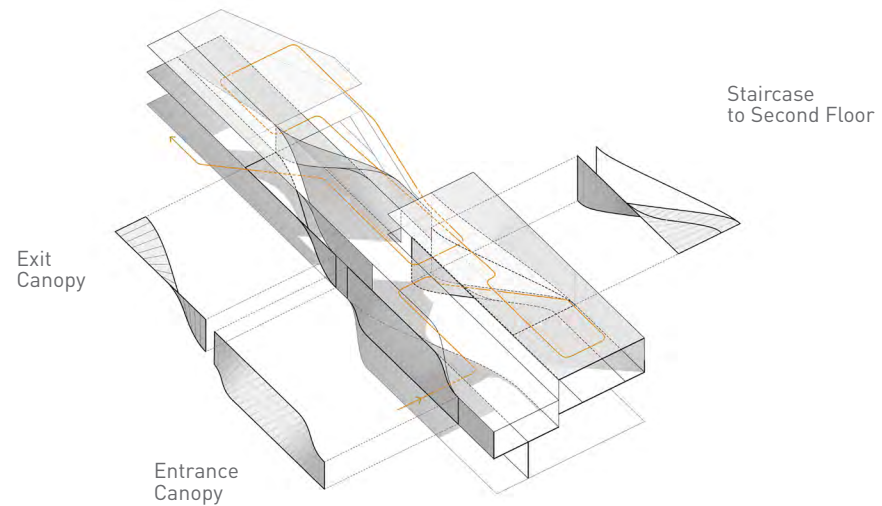


VIEW OF THE GALLERY SPACE



VIEW OF THE MAIN CORRIDOR

The second space is a long ramped zone (above) that allows for a gentle vertical transition to the third floor VIP zones. Next to the ramp, the curved linear wall creates a compelling interior experience that reinforces the design concept. The building's main public stair is created by folding a vertical interior wall into a horizontal surface, creating a unique curved wooden zone that maximizes the transition from horizontal to vertical.



VIEW OF THE MAIN STAIRS

The exterior skin of the building is clad with parametrically designed stainless steel panels, while the interior surfaces are defined by a palette of wood and metal that extends the material strategy of the exterior form. There is a landscape back yard on the north side of main building which brings visitors with elegant scenery. Going to the study room on second floor through the main wood stair and then walking through a corridor full of sunshine, finally arriving at the easternmost side, visitors could enjoy the gorgeous city view on the other side of Qinhuai River.

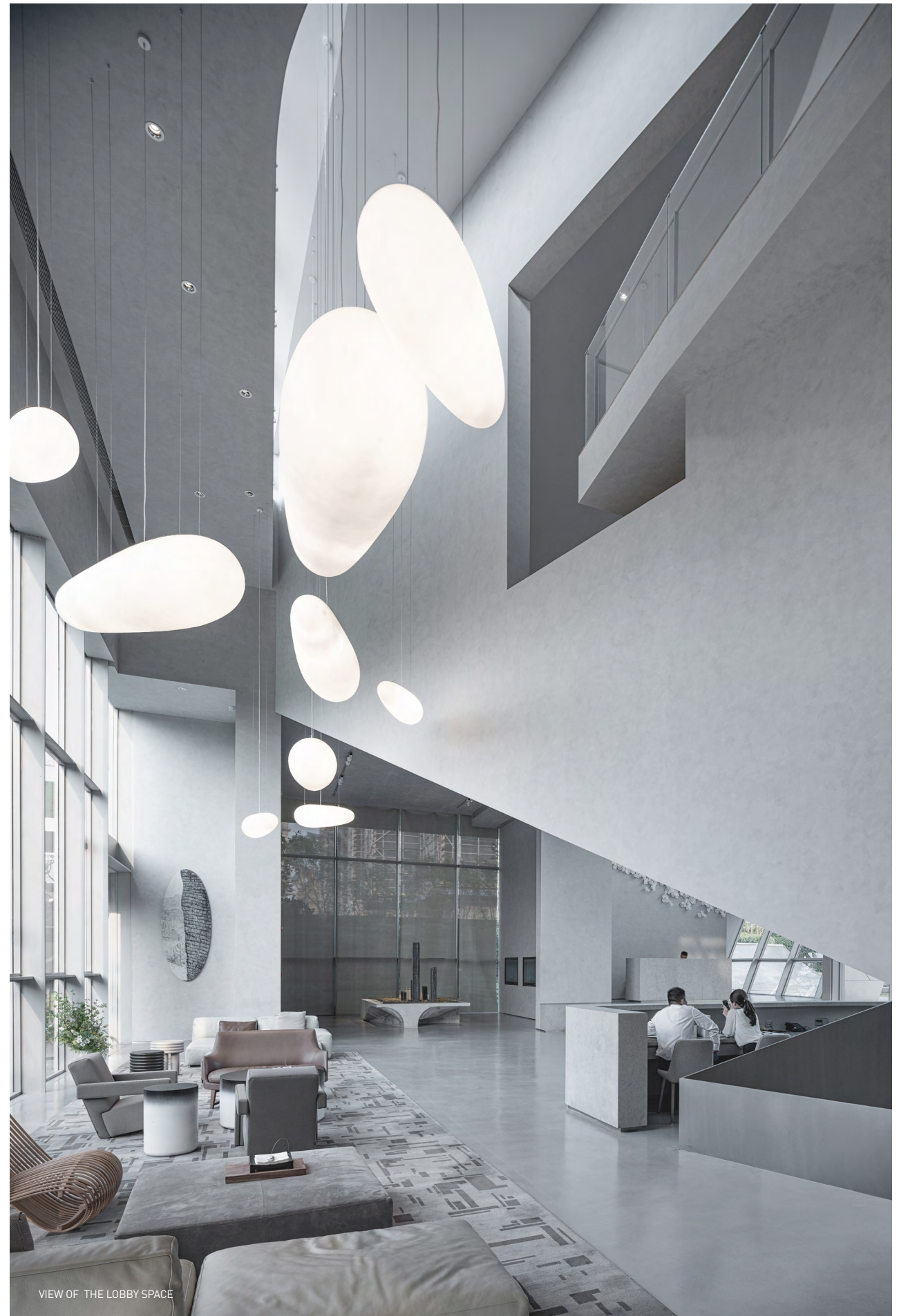
The metallic form of the project promotes a sense of technology and optimism in line with the aspirations of surrounding urban neighborhood.



VIEW OF THE SKYLIGHT



VIEW OF THE SKYLIGHT



VIEW OF THE LOBBY SPACE

**NANJING
ART CENTER** | **THANK
YOU**

