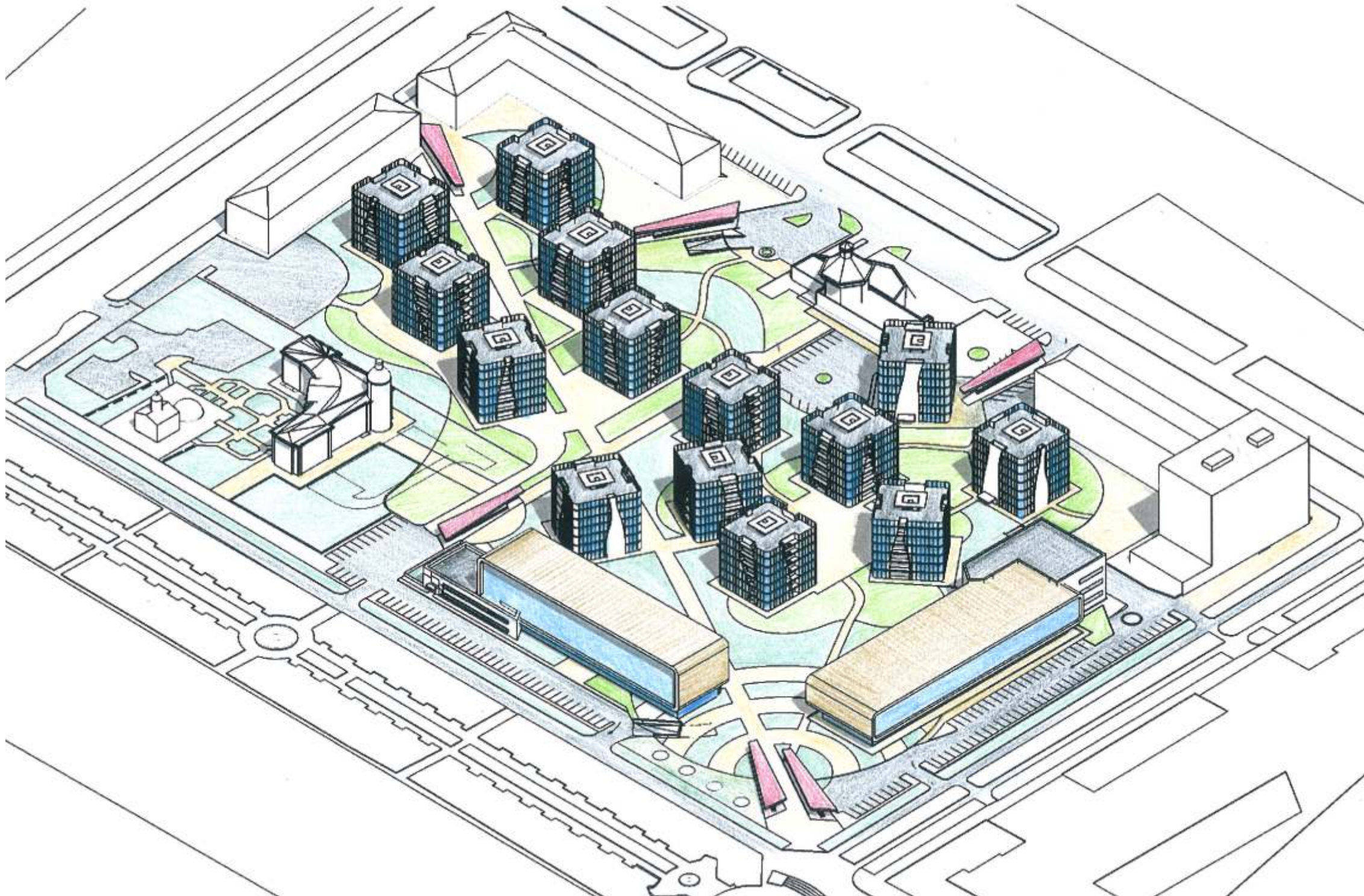


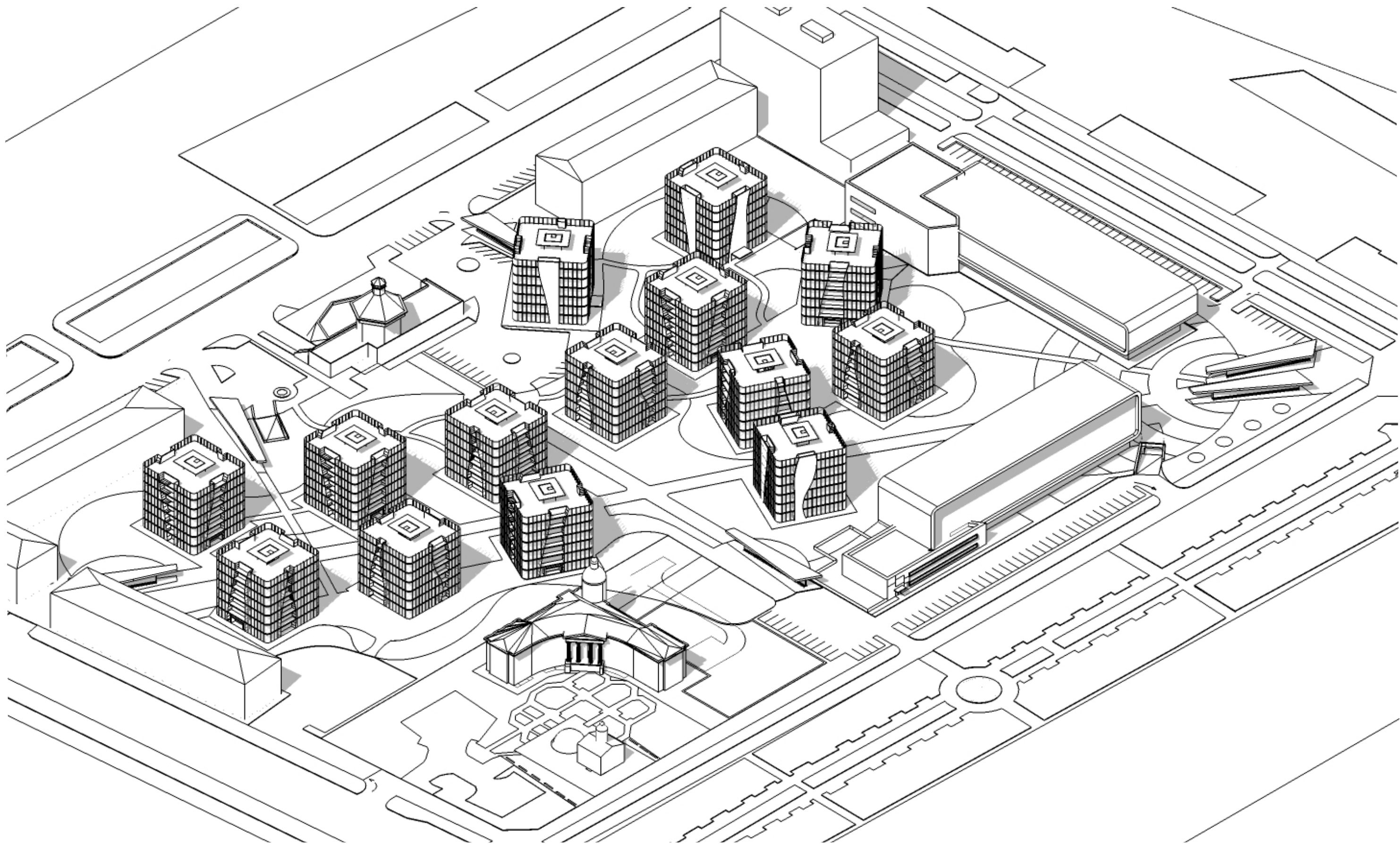
# N77835

## «THE GREEN CLOUD»

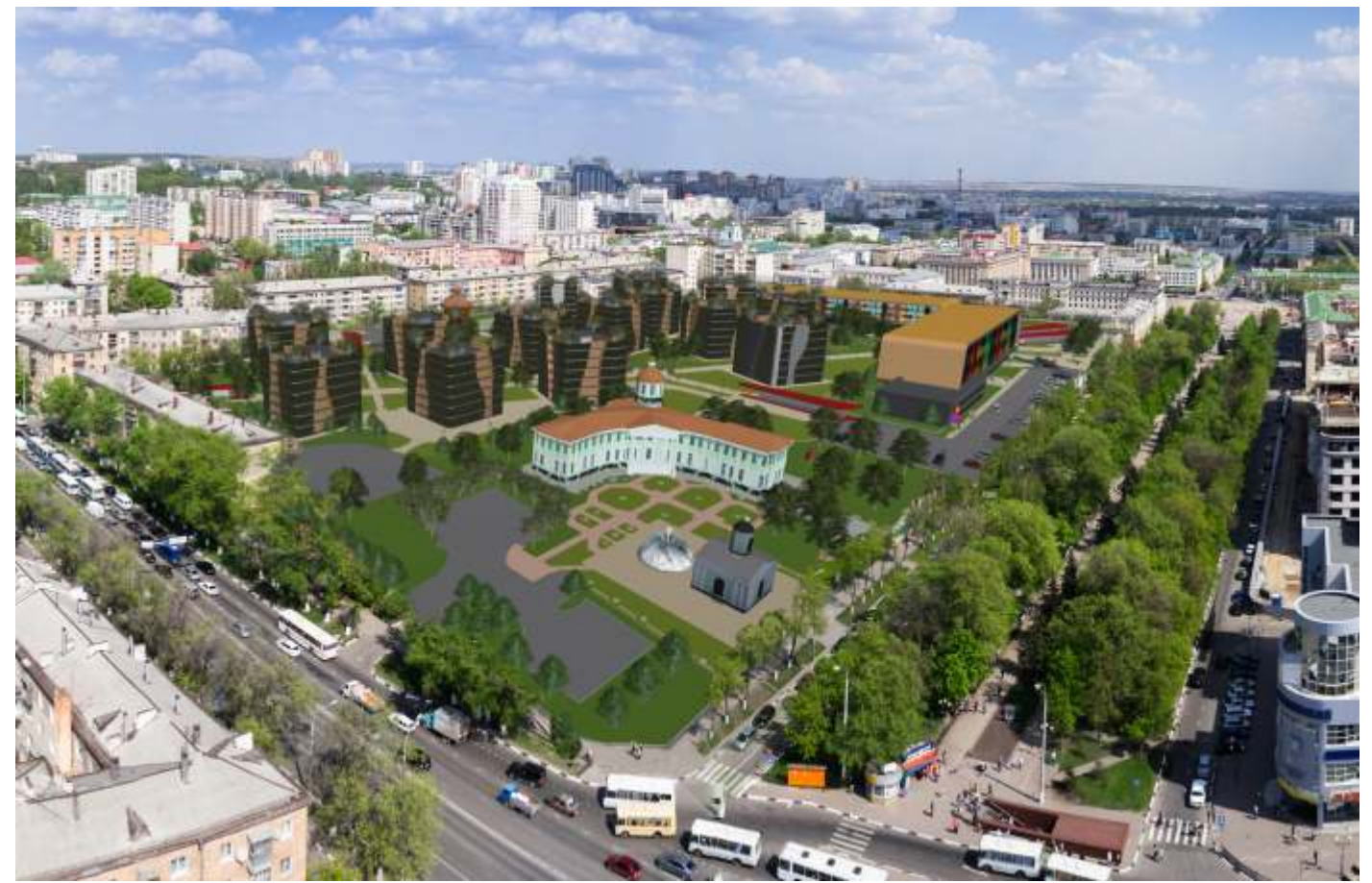


*The Green Cloud* is a neighborhood designed and developed for the welfare of the people who inhabit it and who attend for various reasons. Inside there are buildings with different uses: residential, commercial, offices, bars, restaurants, places relaxation and a kindergarten. The whole area is dedicated exclusively to pedestrian traffic with large green areas, pedestrian and cycle paths, squares and gardens. Access to the neighborhood are indicated by design elements, such as red shelters specially designed and highly visible even from afar. The main purpose of the project is to create a neighborhood where quality of life is very high, free from noise and smog, away from the traffic and with many green areas. The car access from the outside to the underground parking on two floors by ramps with stairs and lifts to the slopes of the people directly onto the gardens. The underground car parks can contain up to 1125 cars. There are also parking outside along the peripheral areas of the district, particularly in areas close to the commercial and management for a total of 230 parking spaces. Both residential buildings for office use those that are designed with a square tower form repeatable, 20 meters wide and 15 meters high, consists of five floors with floor type divided into four apartments / offices of varying size. The residential buildings have large terraces covered by elements of natural wood and partially covers to green. The shopping area is made up of two large multi-storey buildings located on the south-east of the district, ideally connected by a square which is also the meeting point between the two main roads that surround the neighborhood, the Slavy Prospekt and the Boulevard. They are shopping malls, restaurants, coffee-bar, various services and local cultural activities. An asylum to two floors can accommodate up to 70 children and is located near the shopping areas with entertainment spaces open to the green zone of the district.





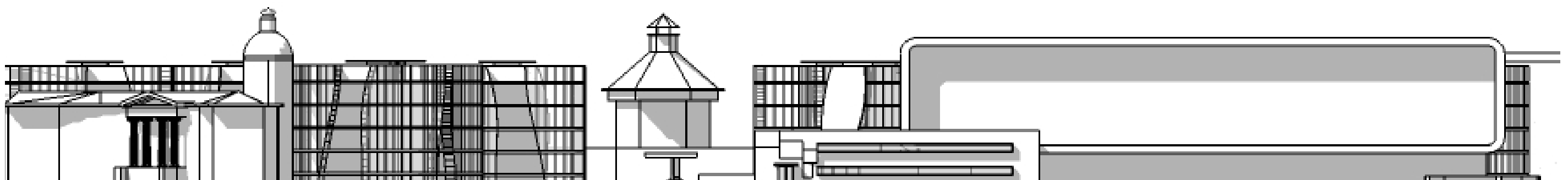
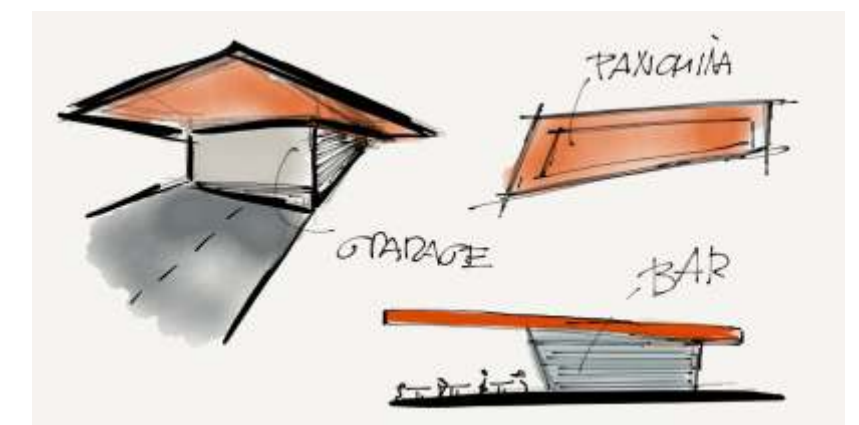
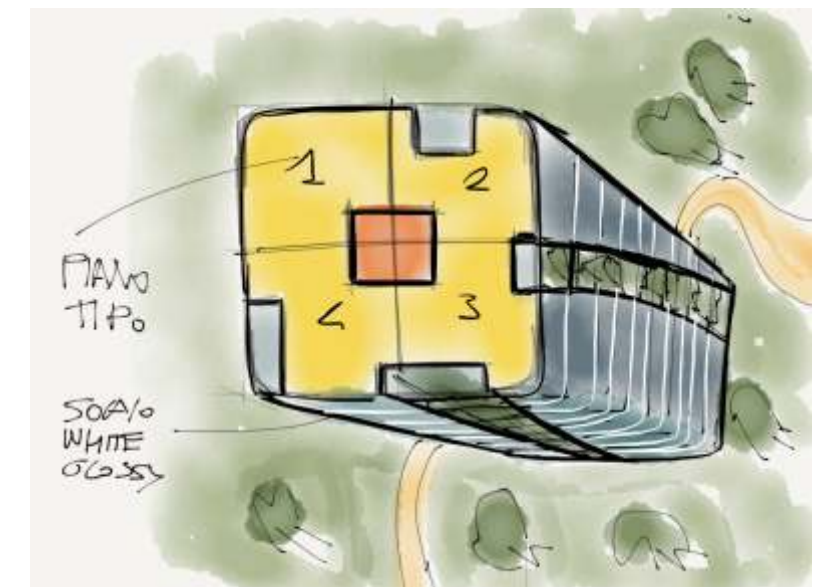
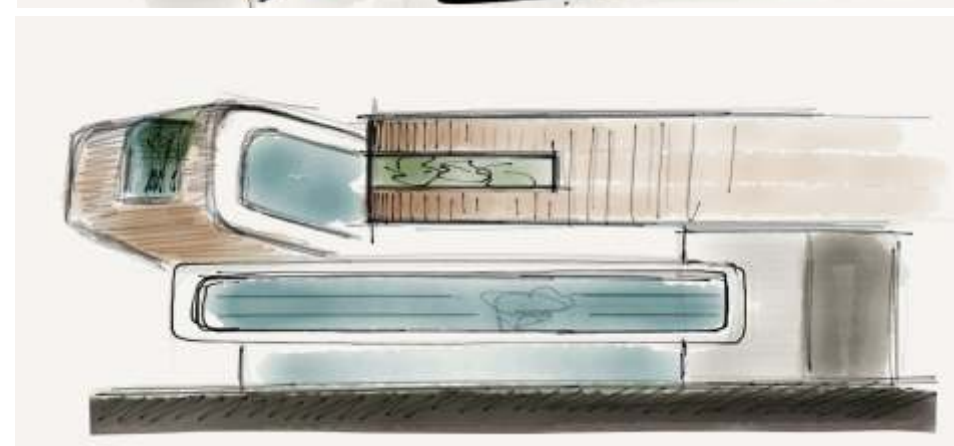
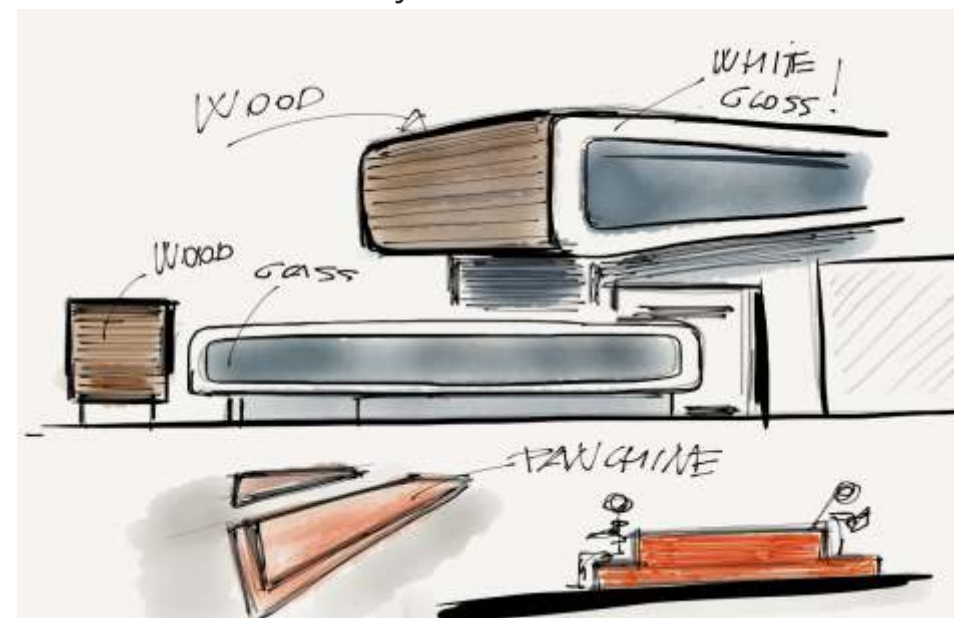
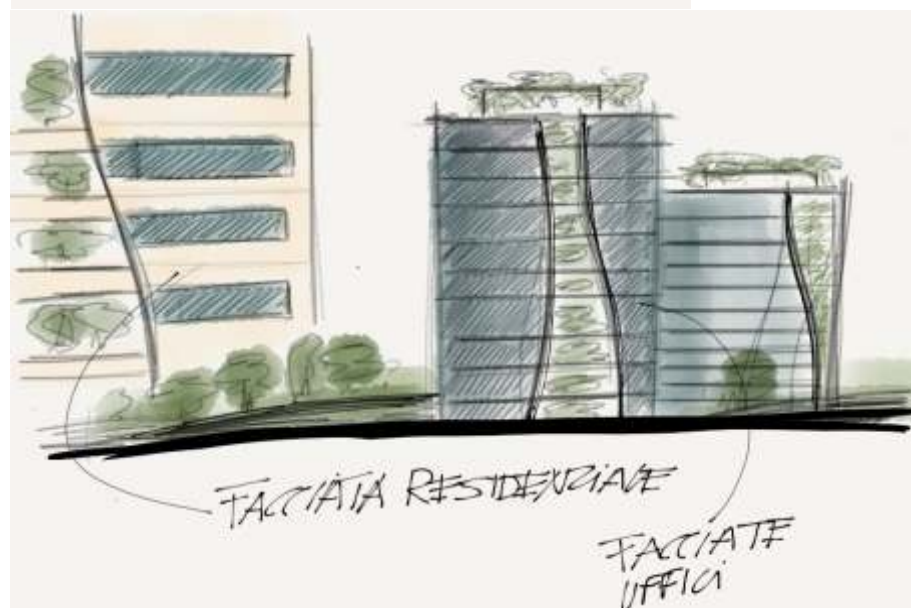




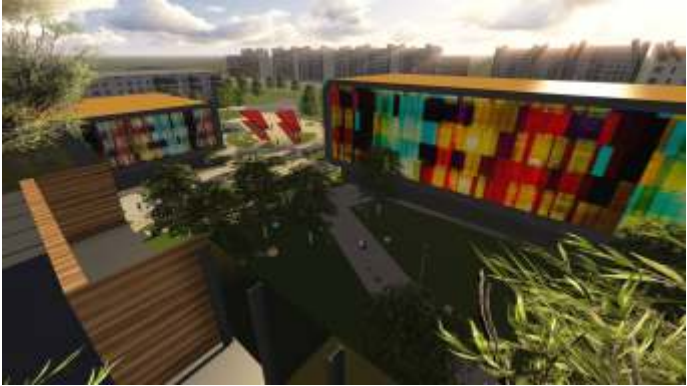
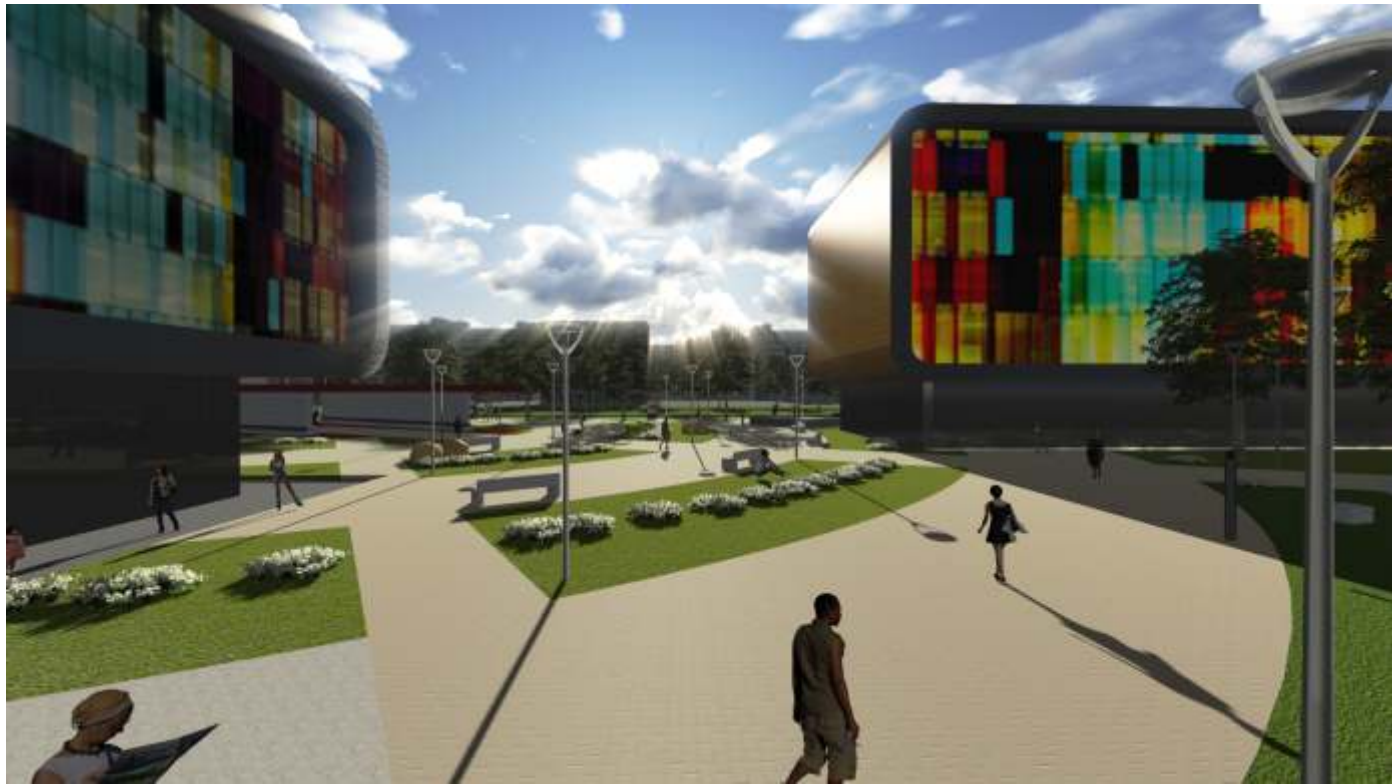
Birdseyesviews



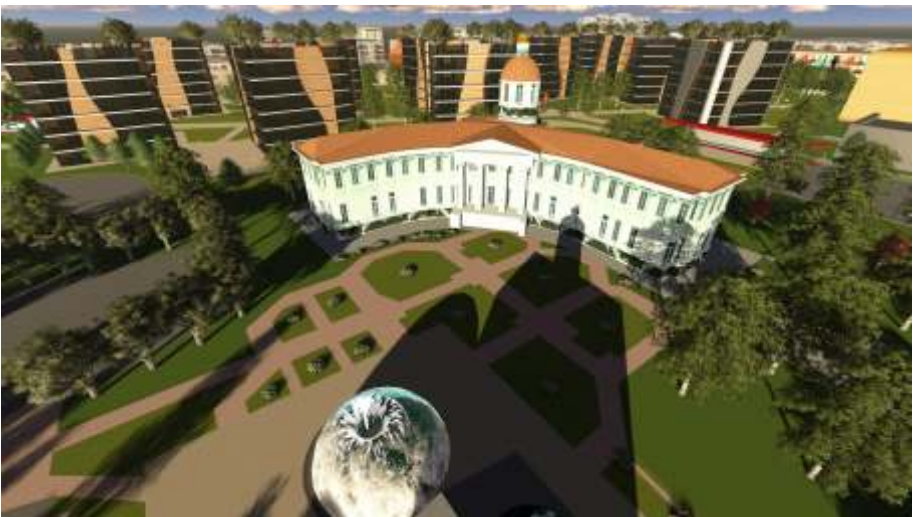
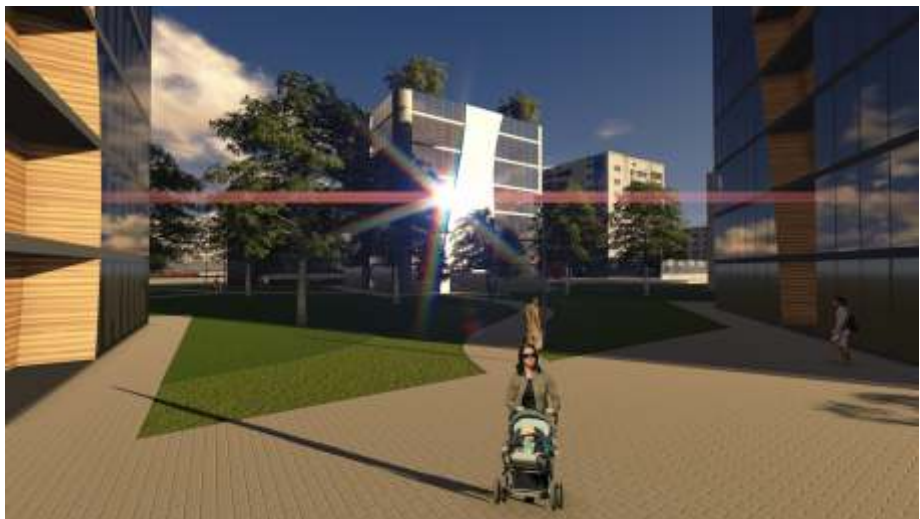
Project Sketches



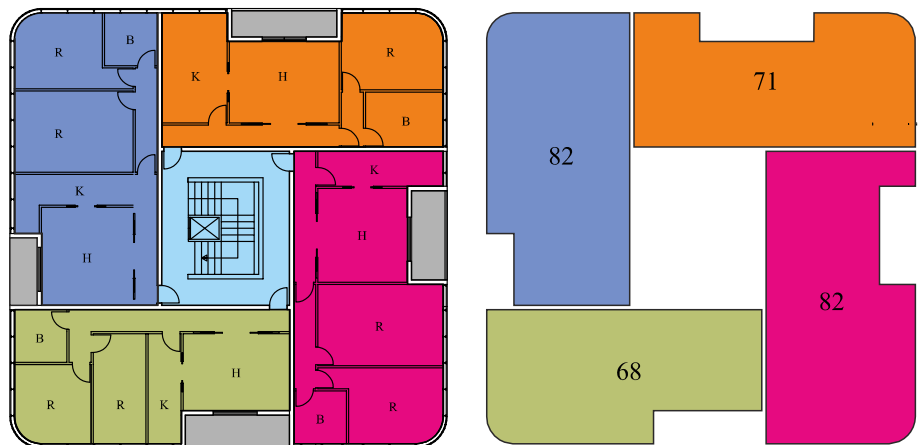




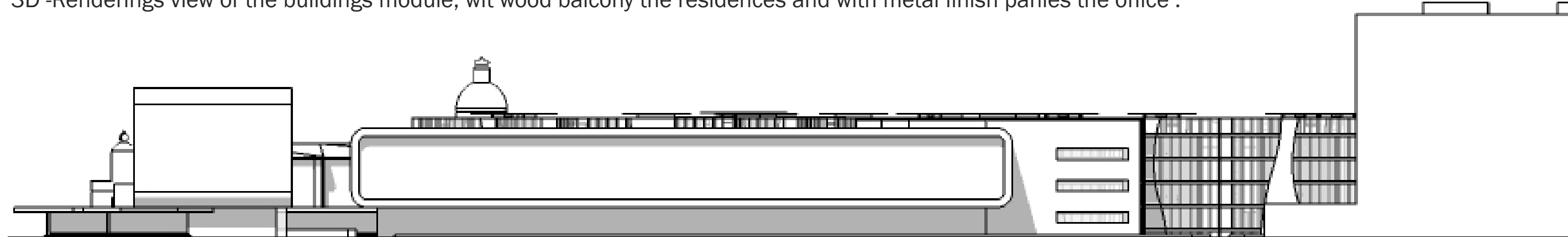
3D -Renderings view of the commercial buidings and new square



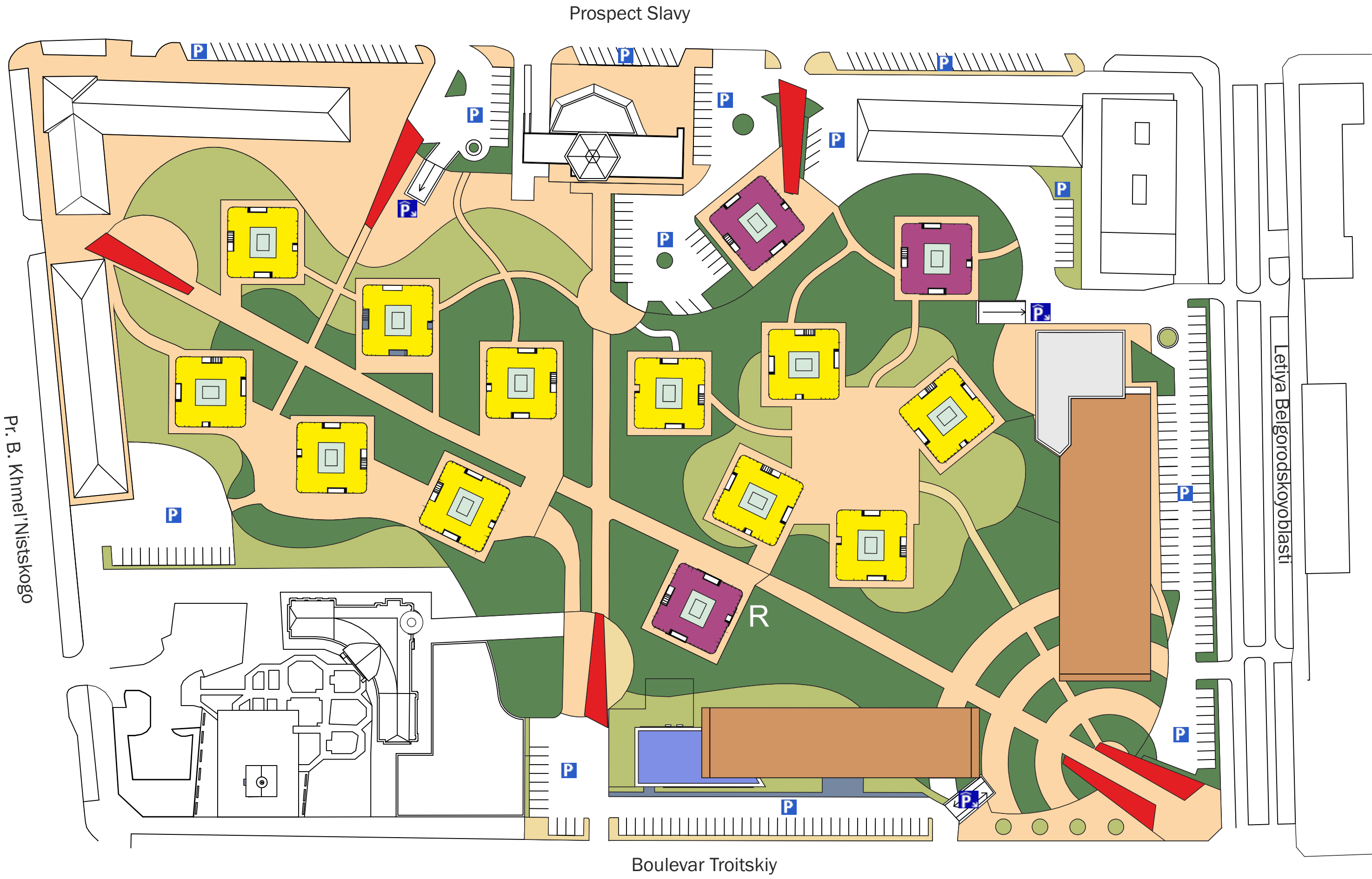
Residential Module: floor plan type 303 sqm about



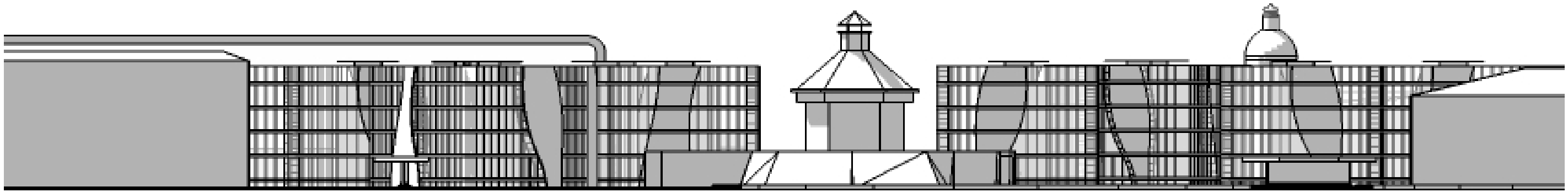
3D -Renderings view of the buildings module, wit wood balcony the residences and with metal finish panles the office .



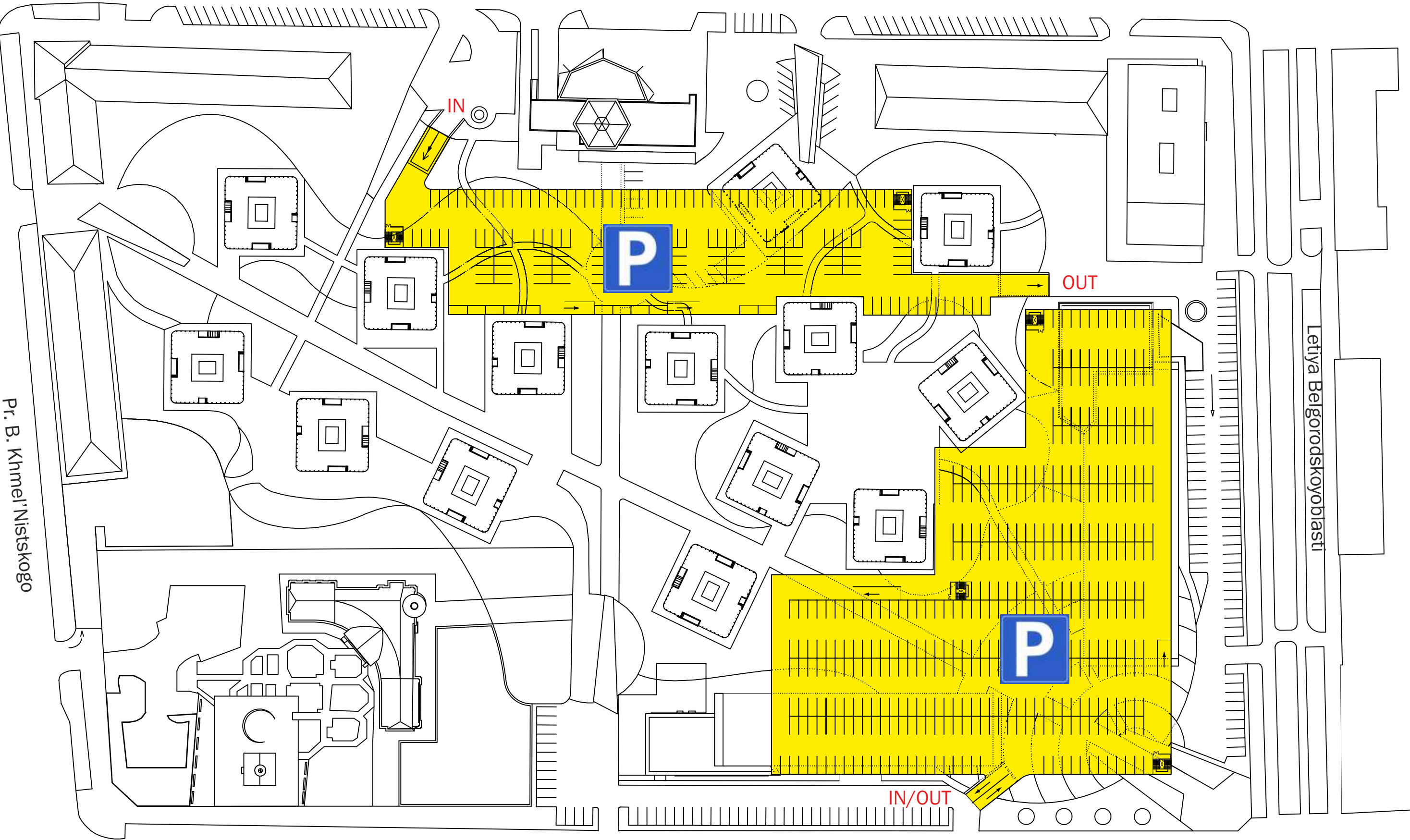




- Office
- Commercial
- Shelters
- Residential
- Kindergarten
- Pedestrian Area



Prospect Slavy

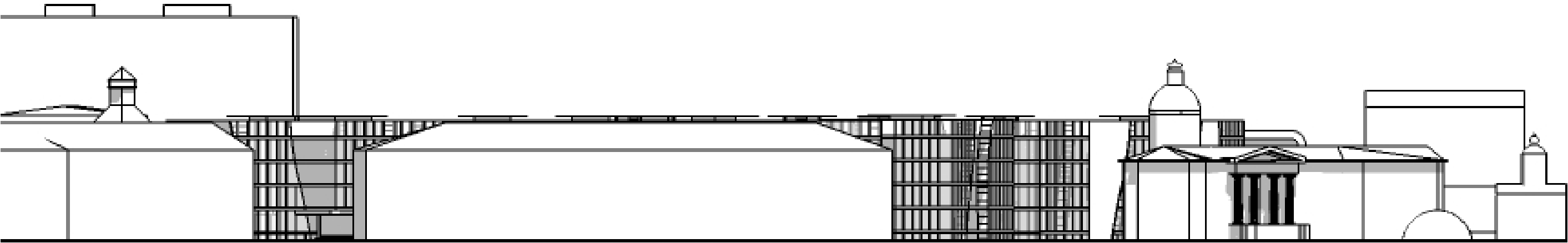


Pr. B. Khmel'Nistskogo

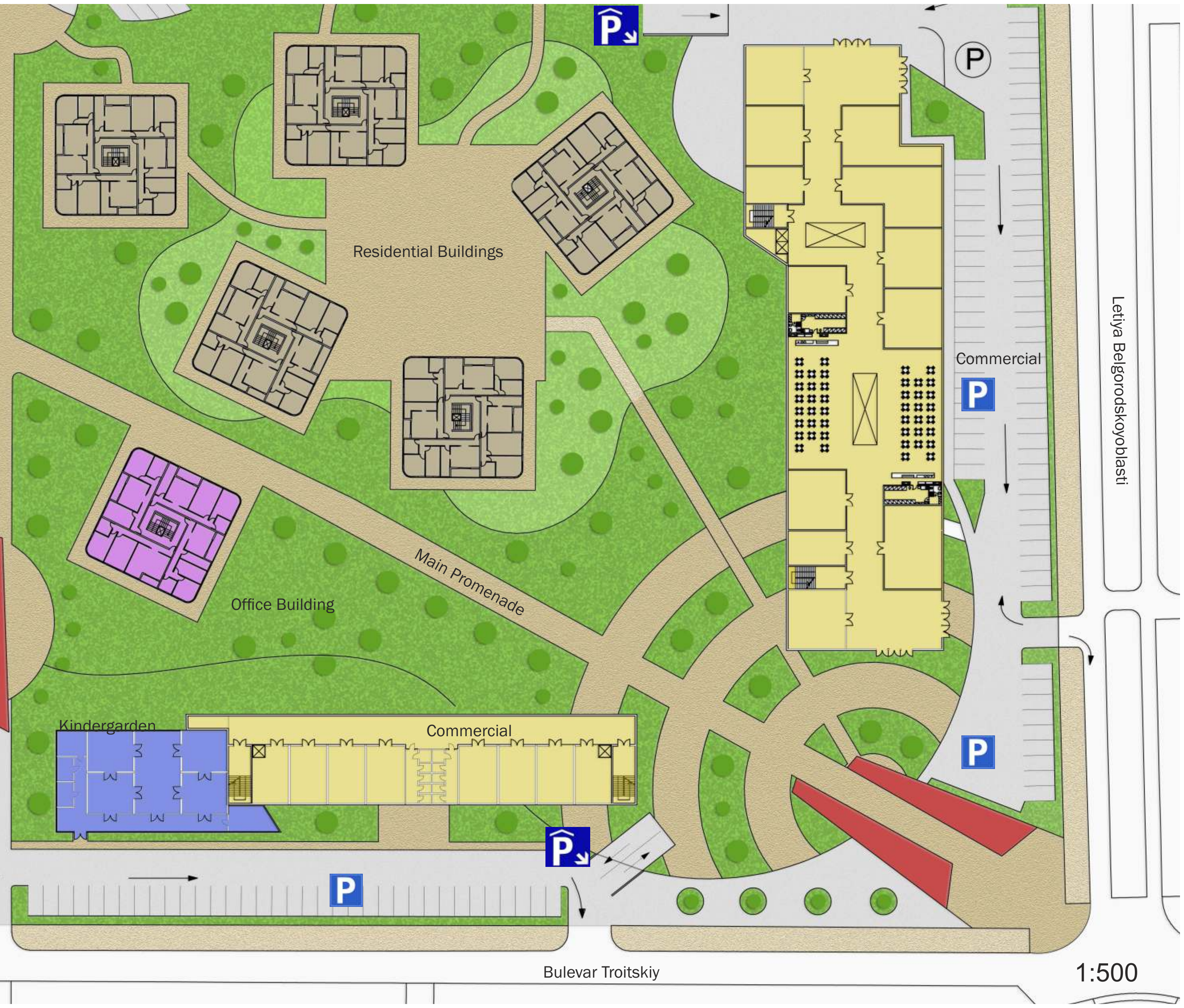
Letiya Belgorodskoyoblasti

Parking - 1125 place on 2 level underground + 230 external

Boulevard Troitskiy







Residential Buildings

Office Building

Main Promenade

Kindergarden

Commercial

Commercial

Bulevar Troitskiy

Letiya Belgorodskoyoblasti

1:500



1:500

