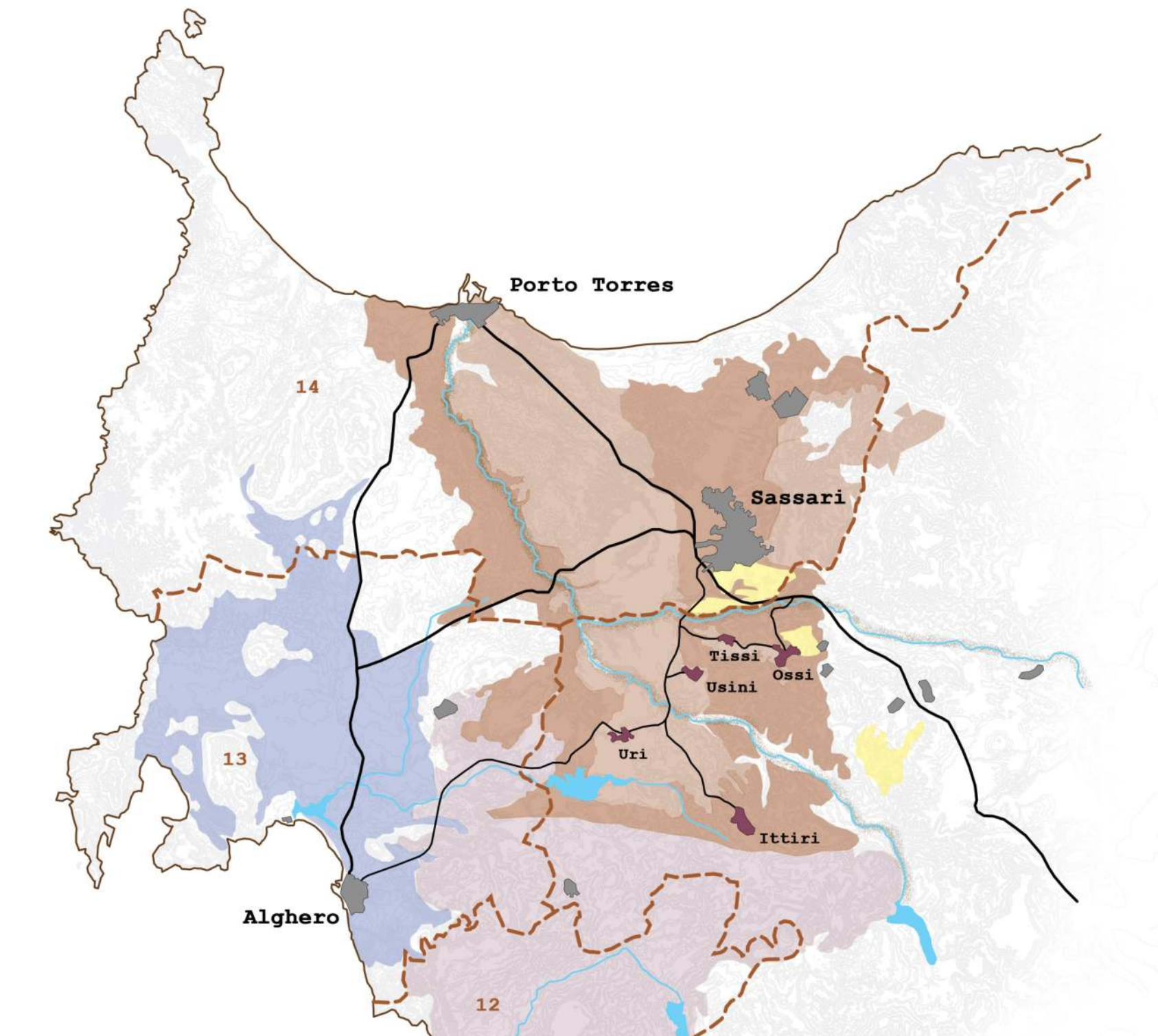
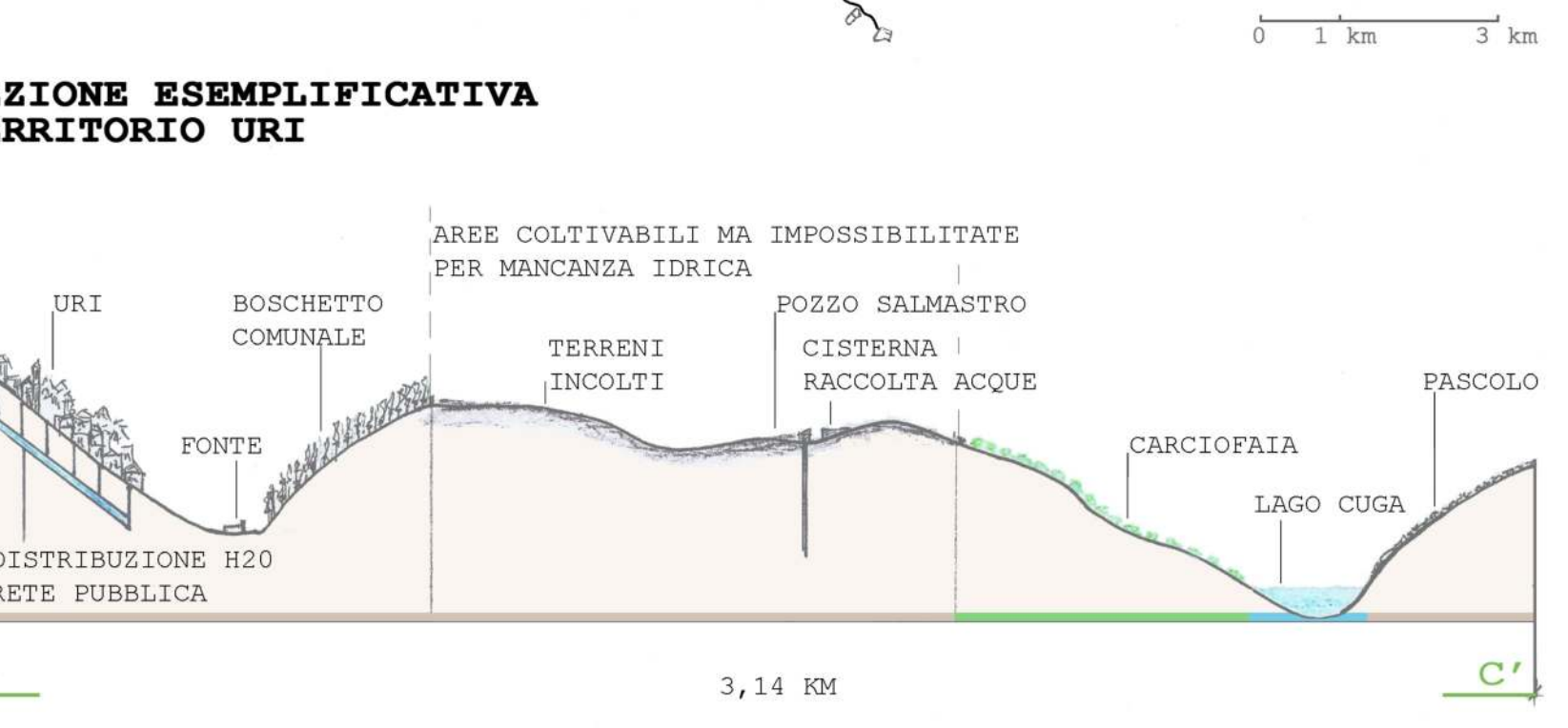
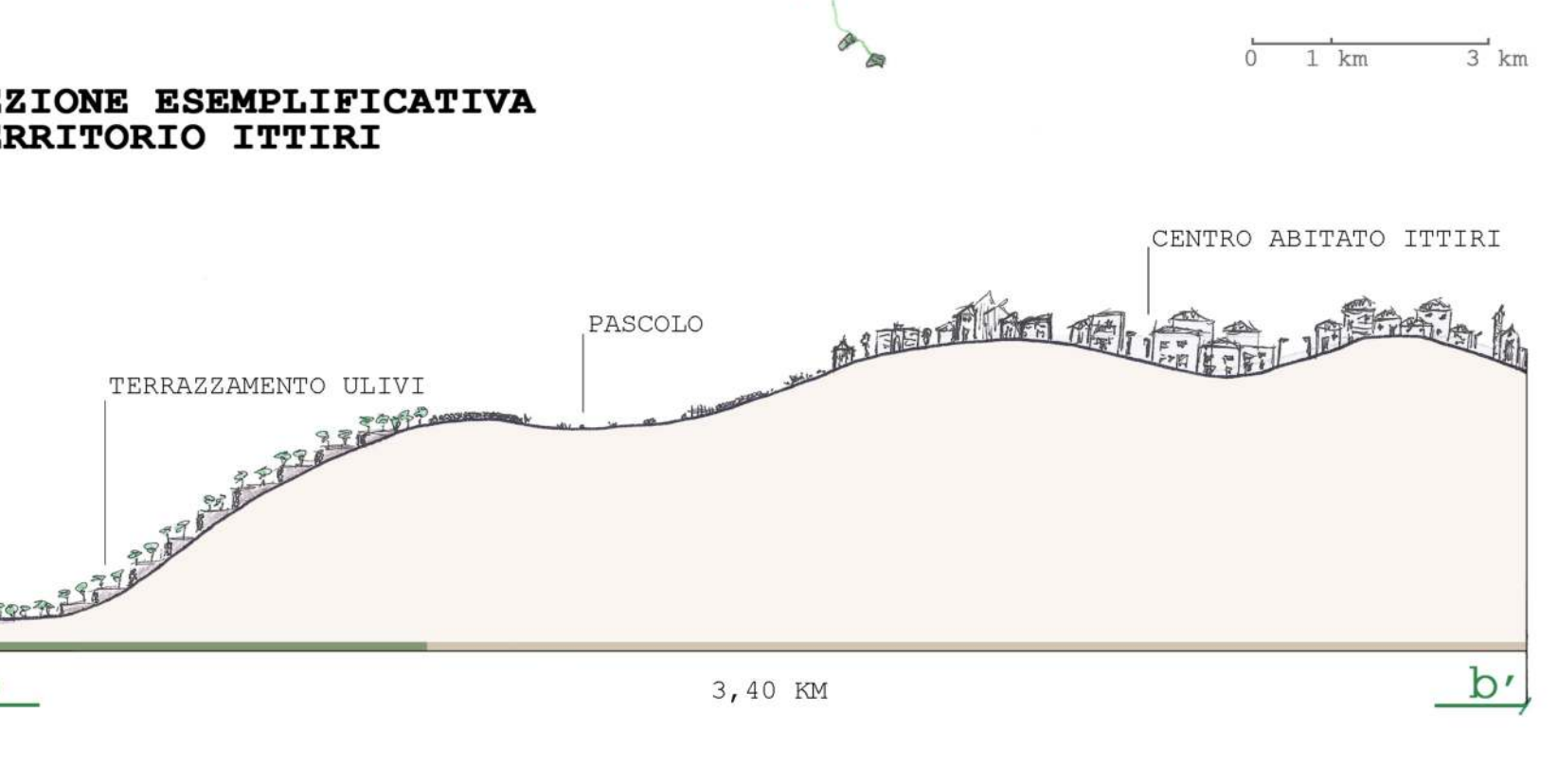
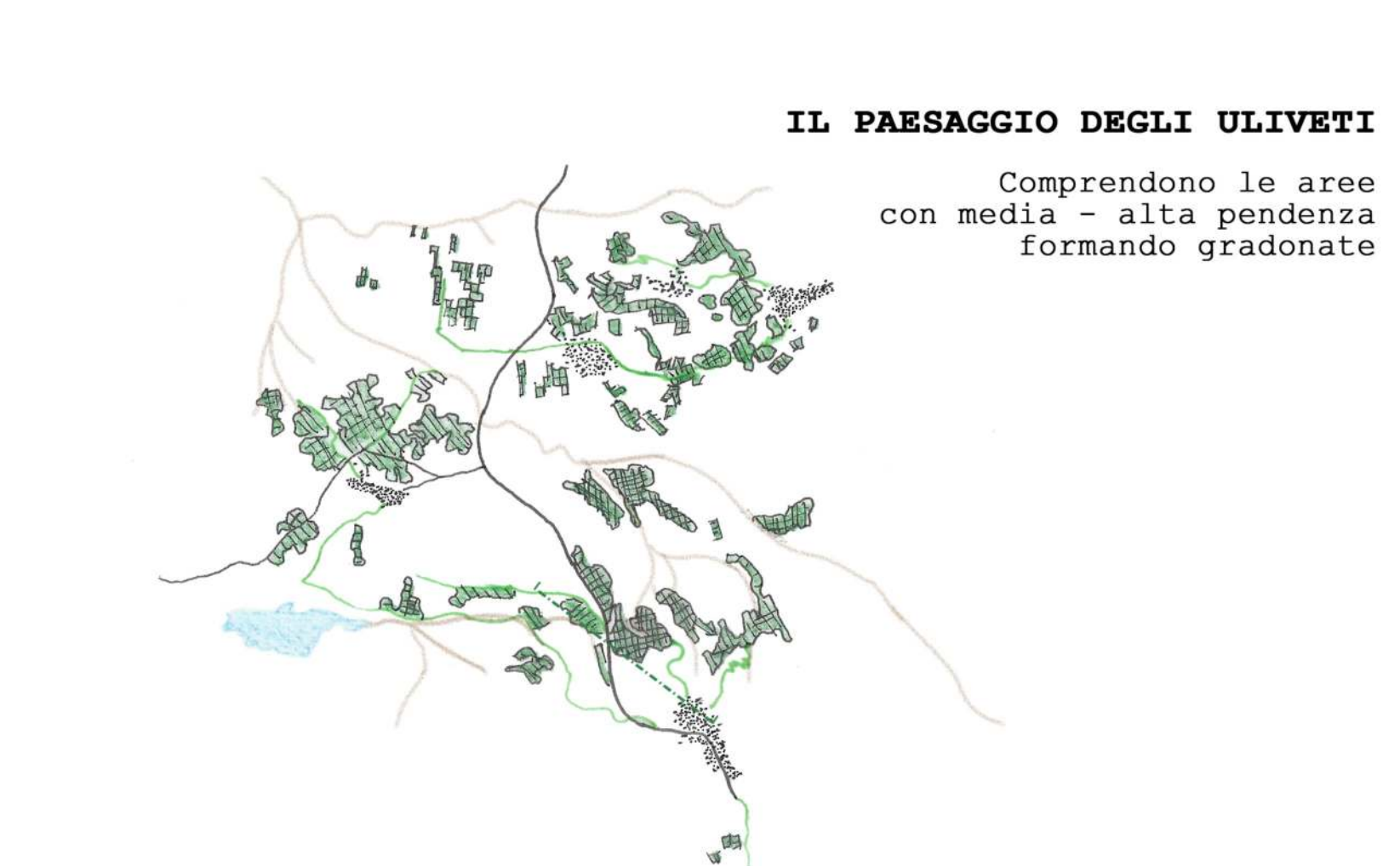
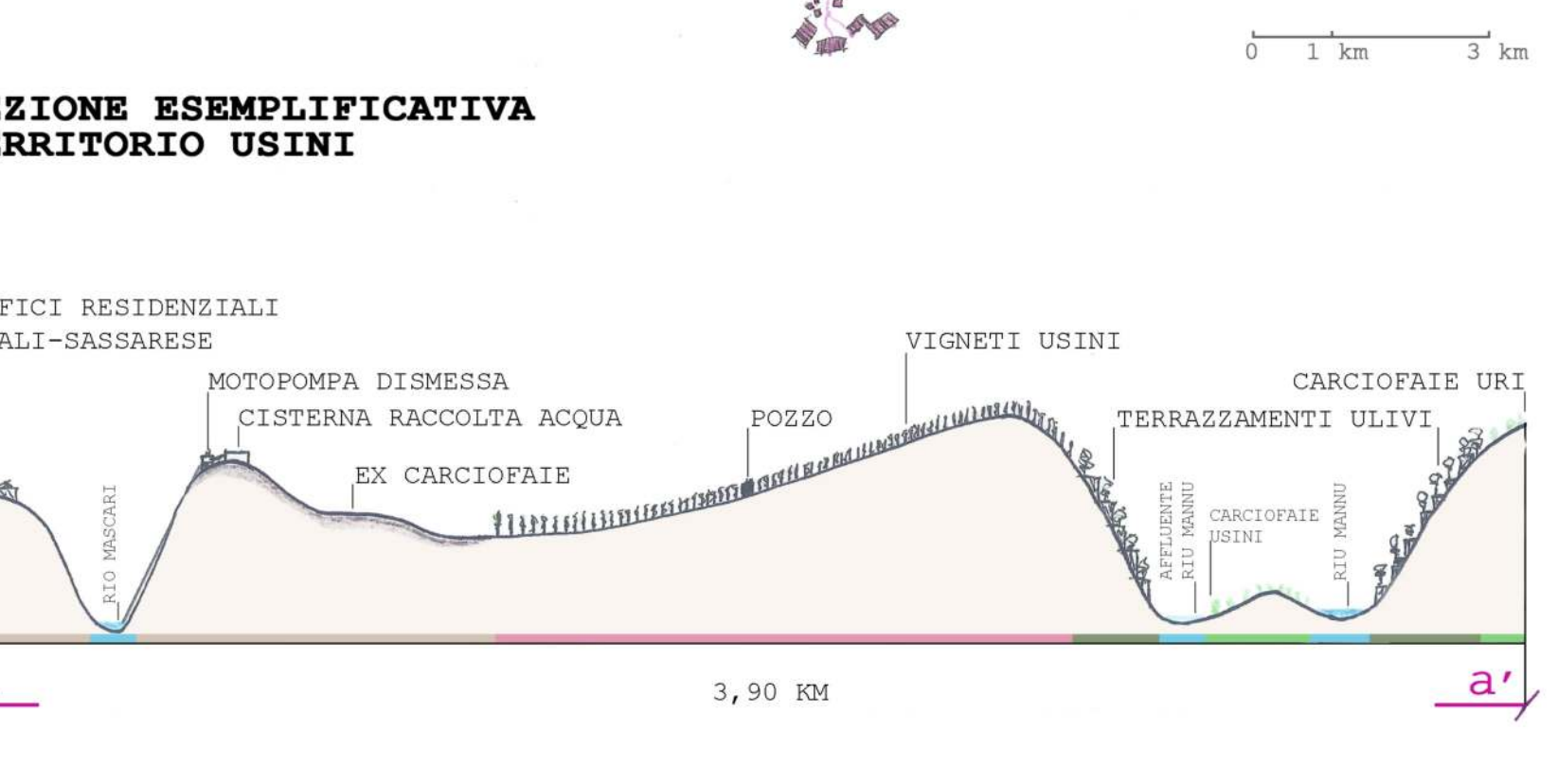
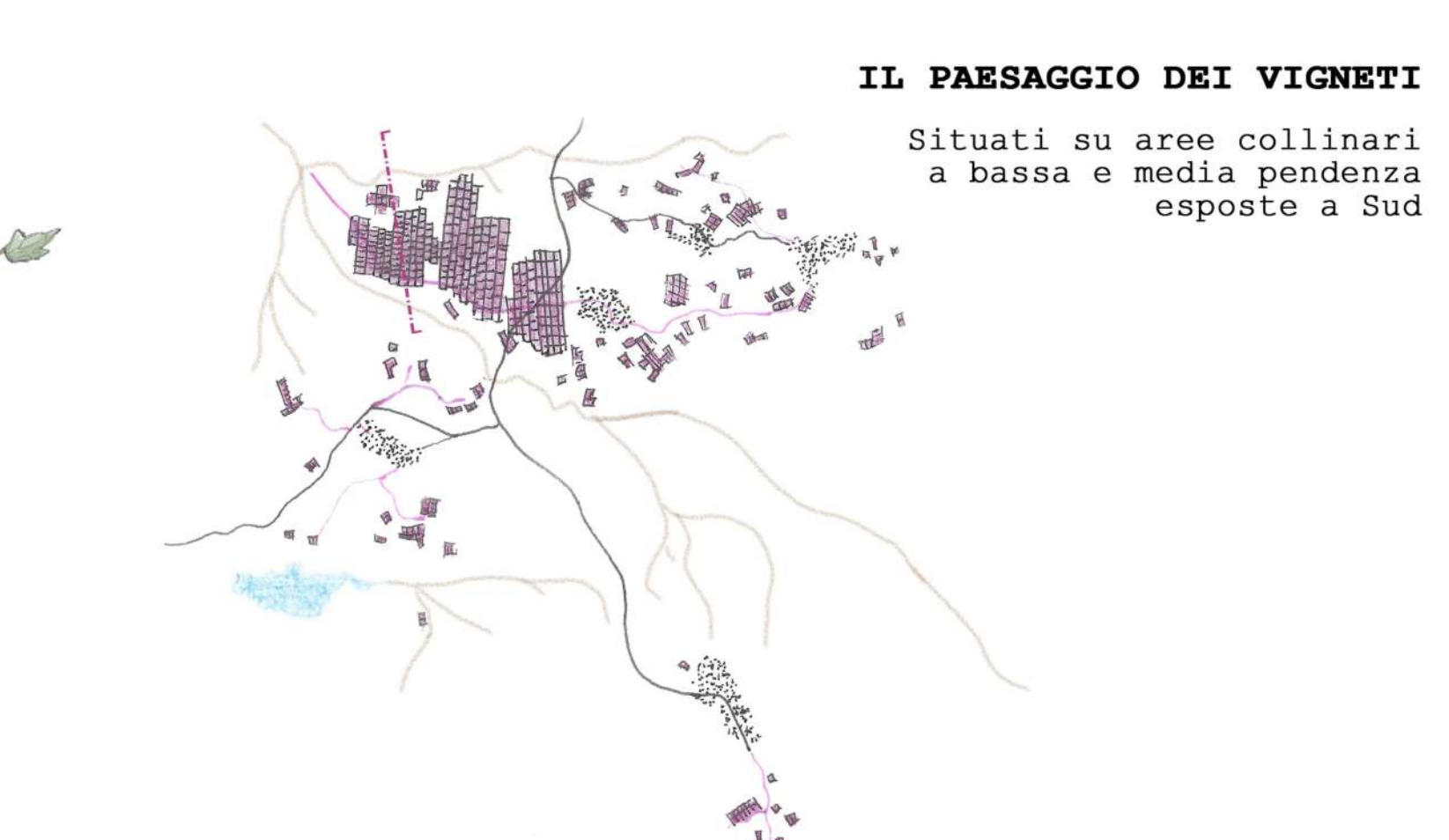
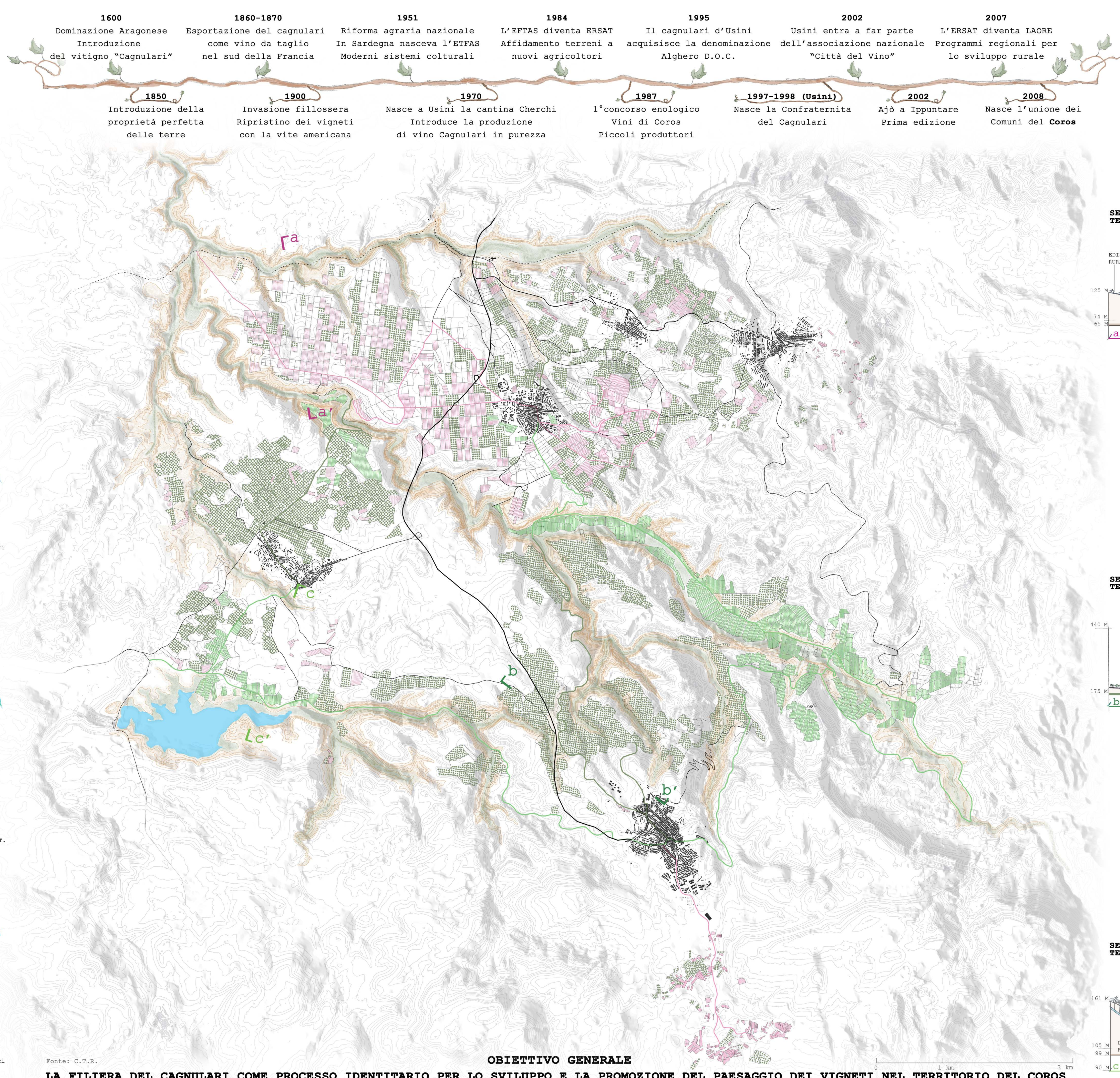
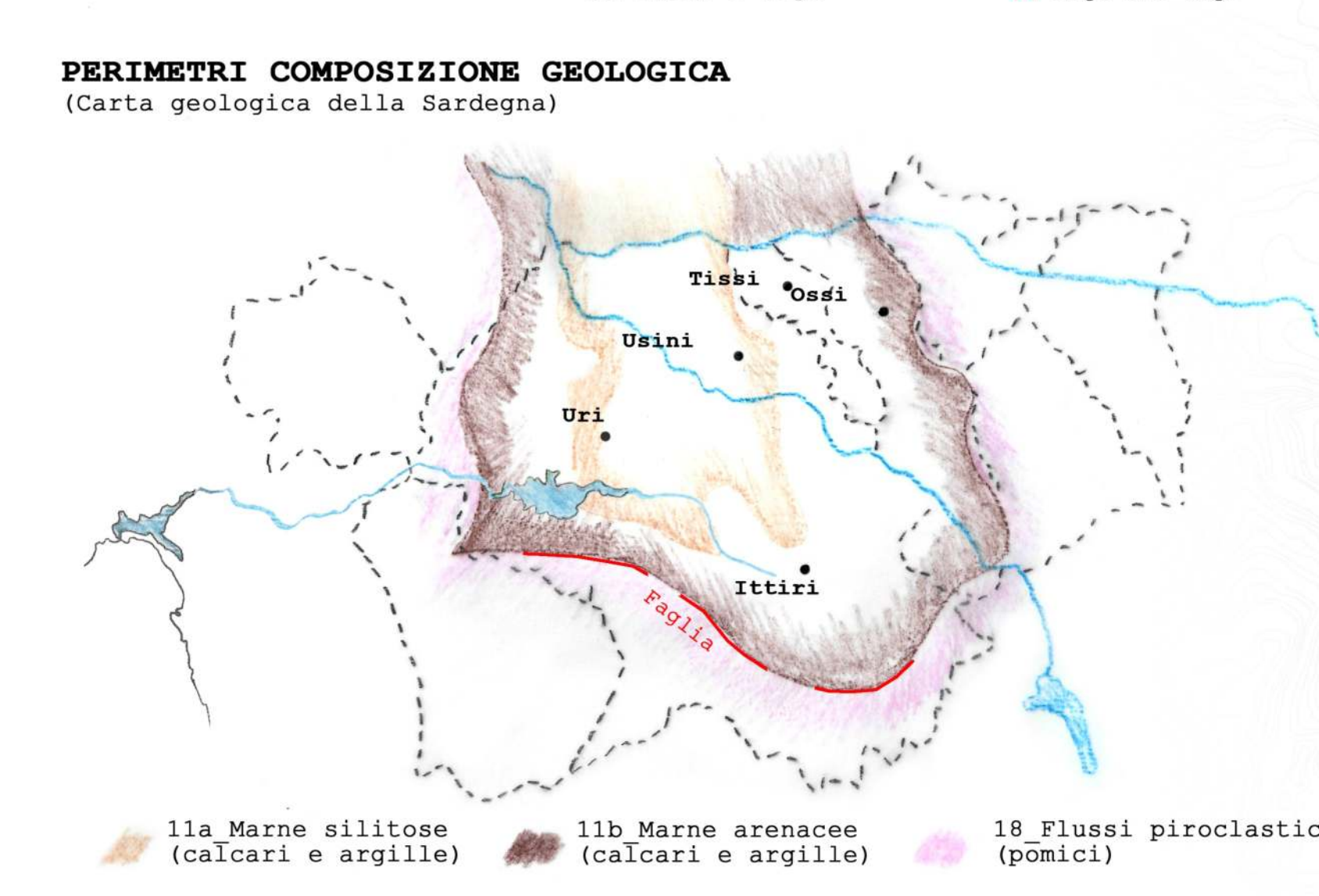
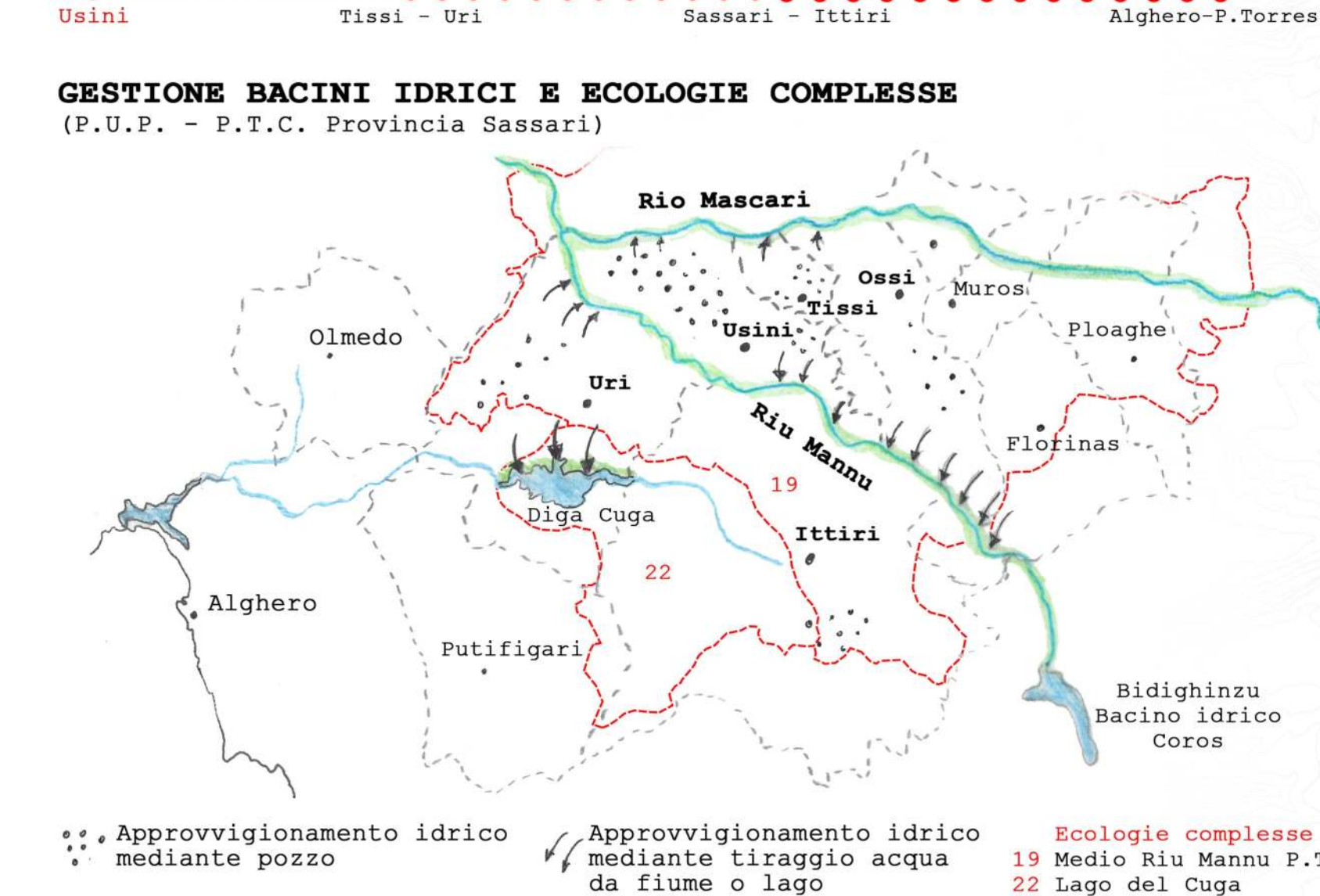
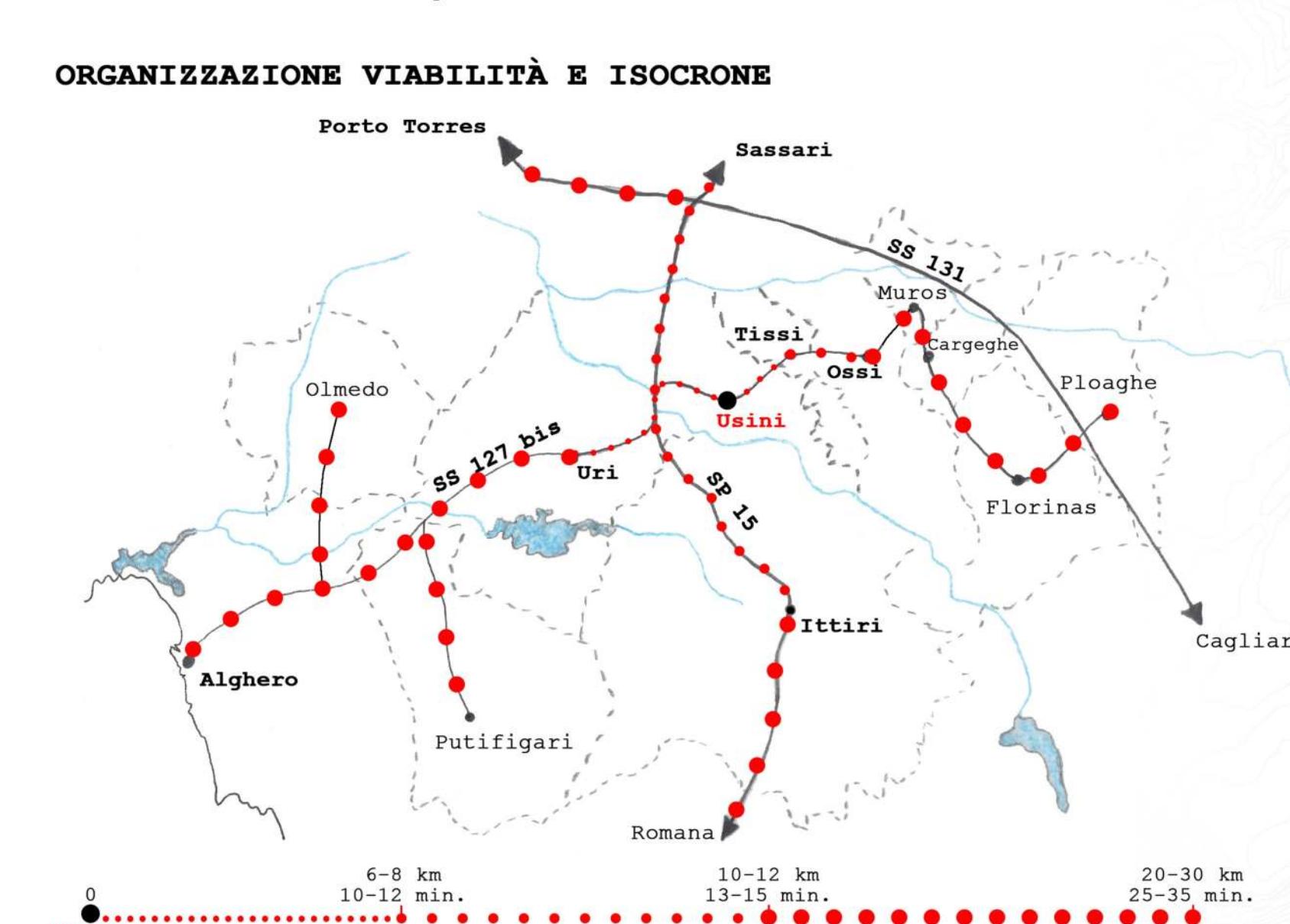


DOMINANTI AMBIENTALI, GEOLOGICHE, INFRASTRUTTURALI E PAESAGGISTICHE



Scala 1:300.000



STRATEGIA

ACCESSIBILITÀ

- Nuove porte d'accesso
- Accessibilità al territorio
- Accessibilità alla risorsa idrica

FRUIZIONE

- Paesaggio dei vigneti
- Paesaggio degli ulivi e carciofaie
- Paesaggio fluviale

GESTIONE

- Biodiversità del vitigno
- Filiera produttiva
- Gestione stazione S.Giorgio
- Modalità attraversamento territorio
- Marketing territoriale
- Enoturismo