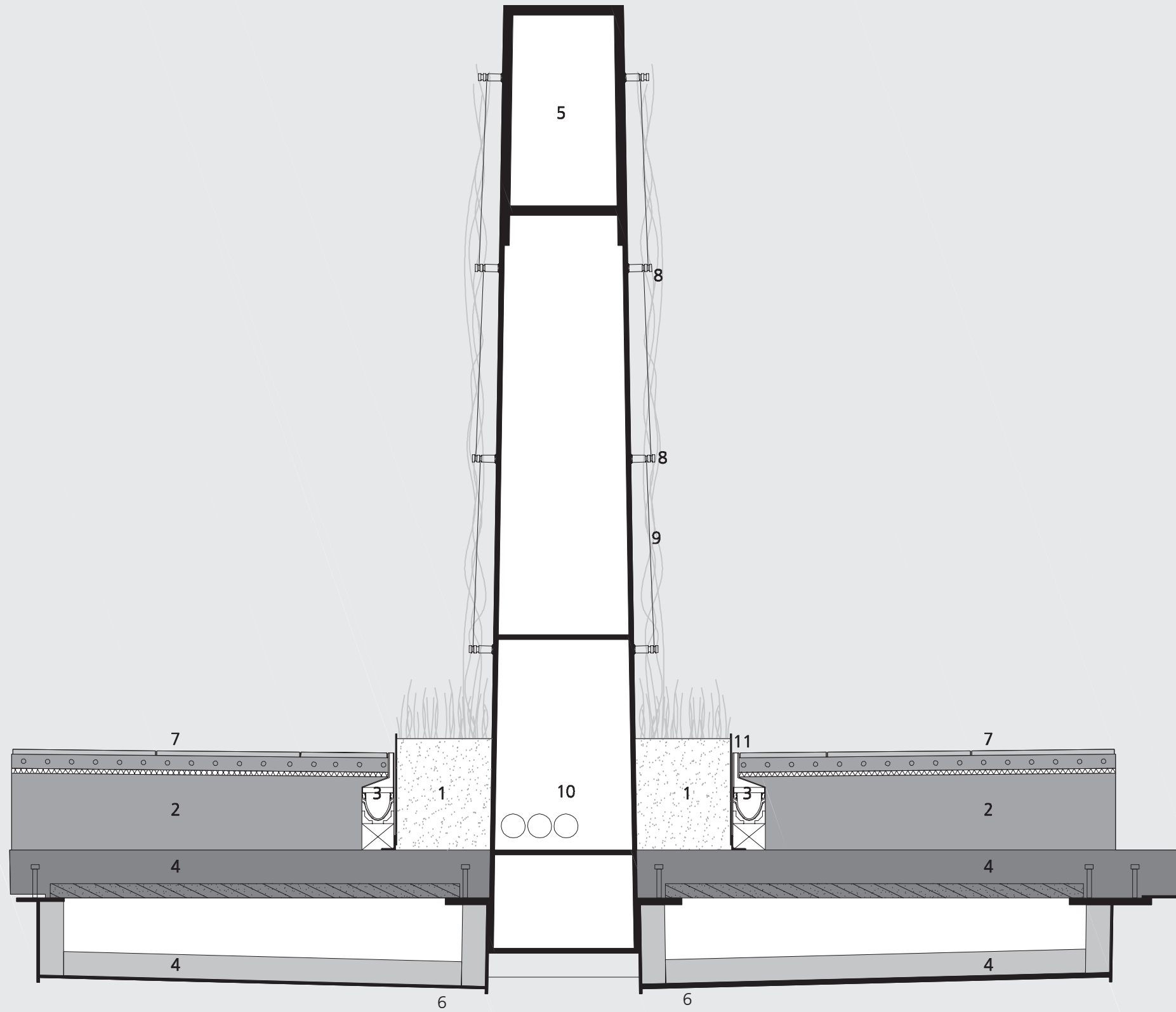
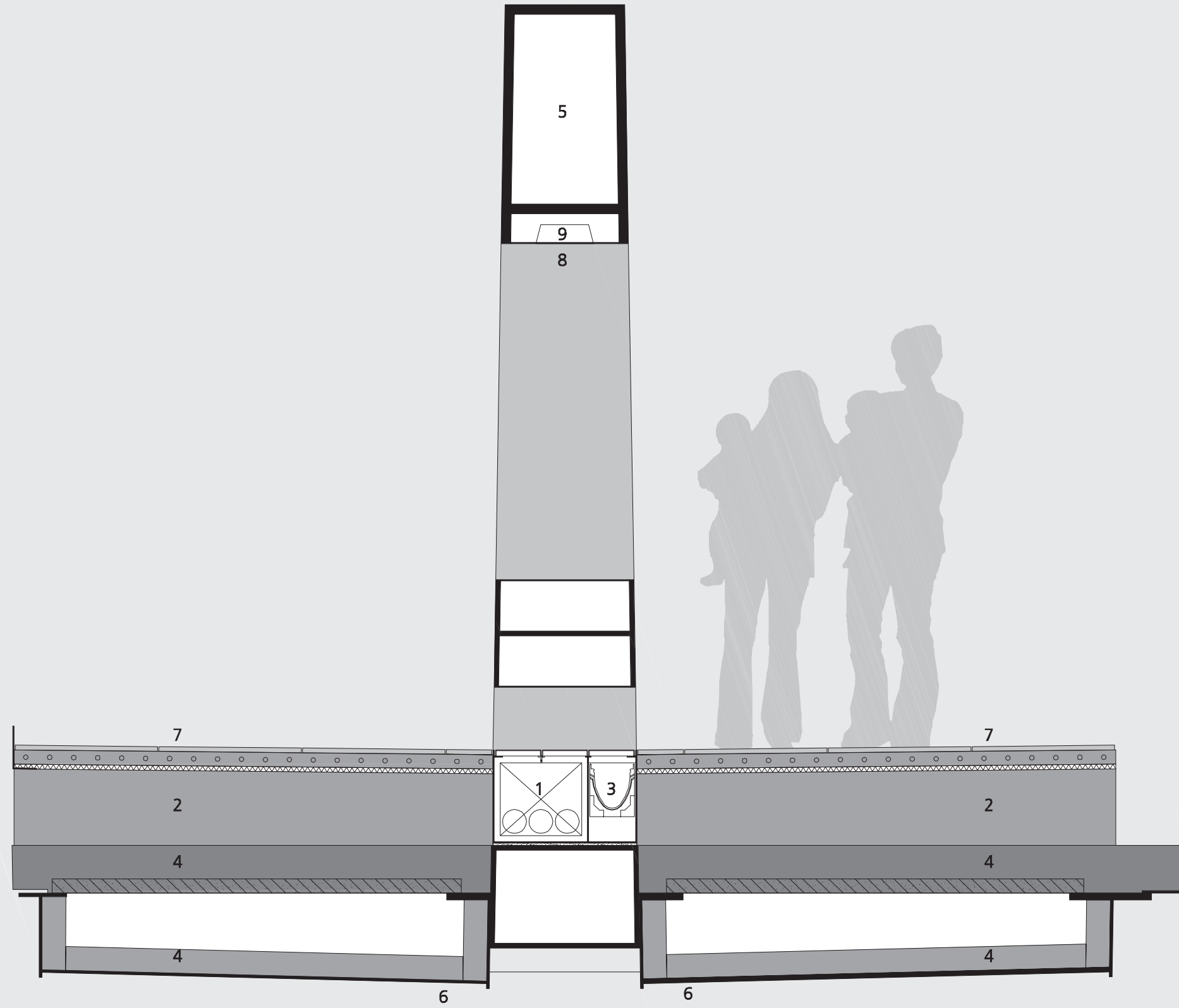


- 1 Planters
- 2 Walkway
- 3 Gutter
- 4 Concrete
- 5 Truss
- 6 Weather-proof steel
- 7 Tiling
- 8 Fixing point for planting cables
- 9 Steel cable
- 10 Installations and pipes
- 11 Weather-proof steel plint

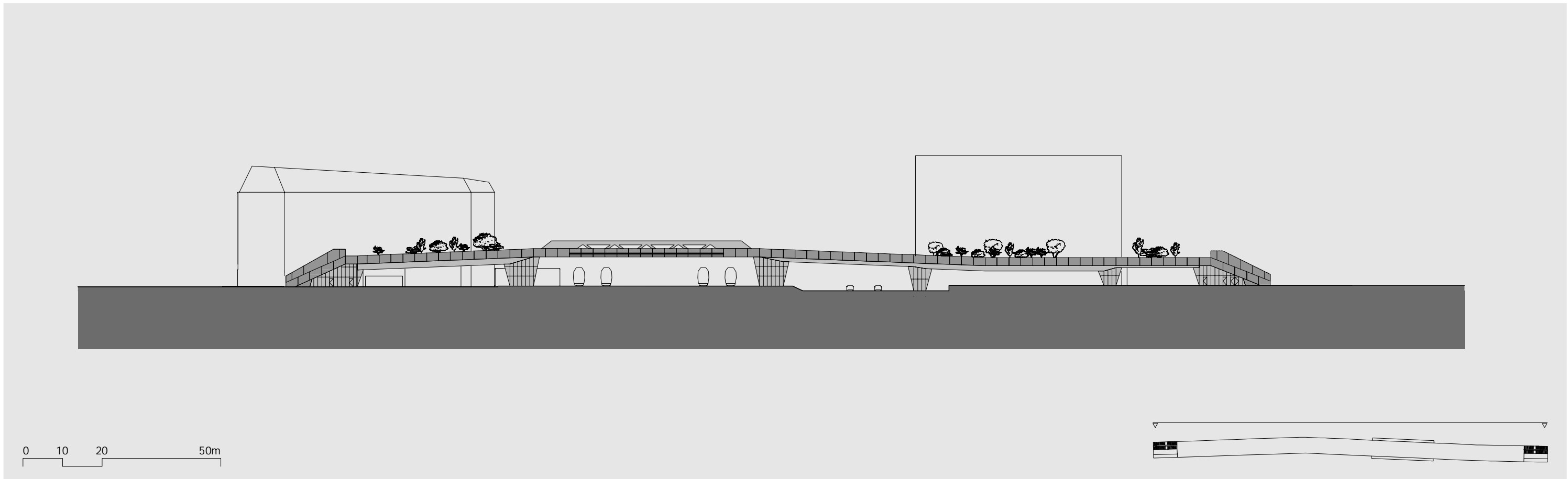
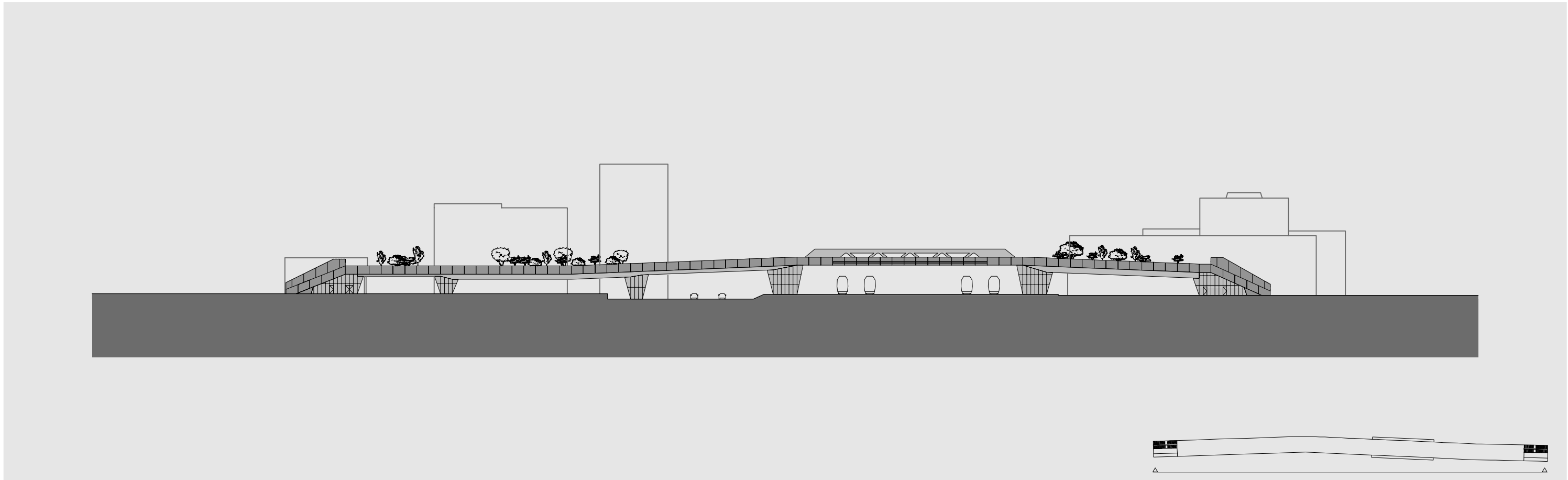


0 100 200 500mm

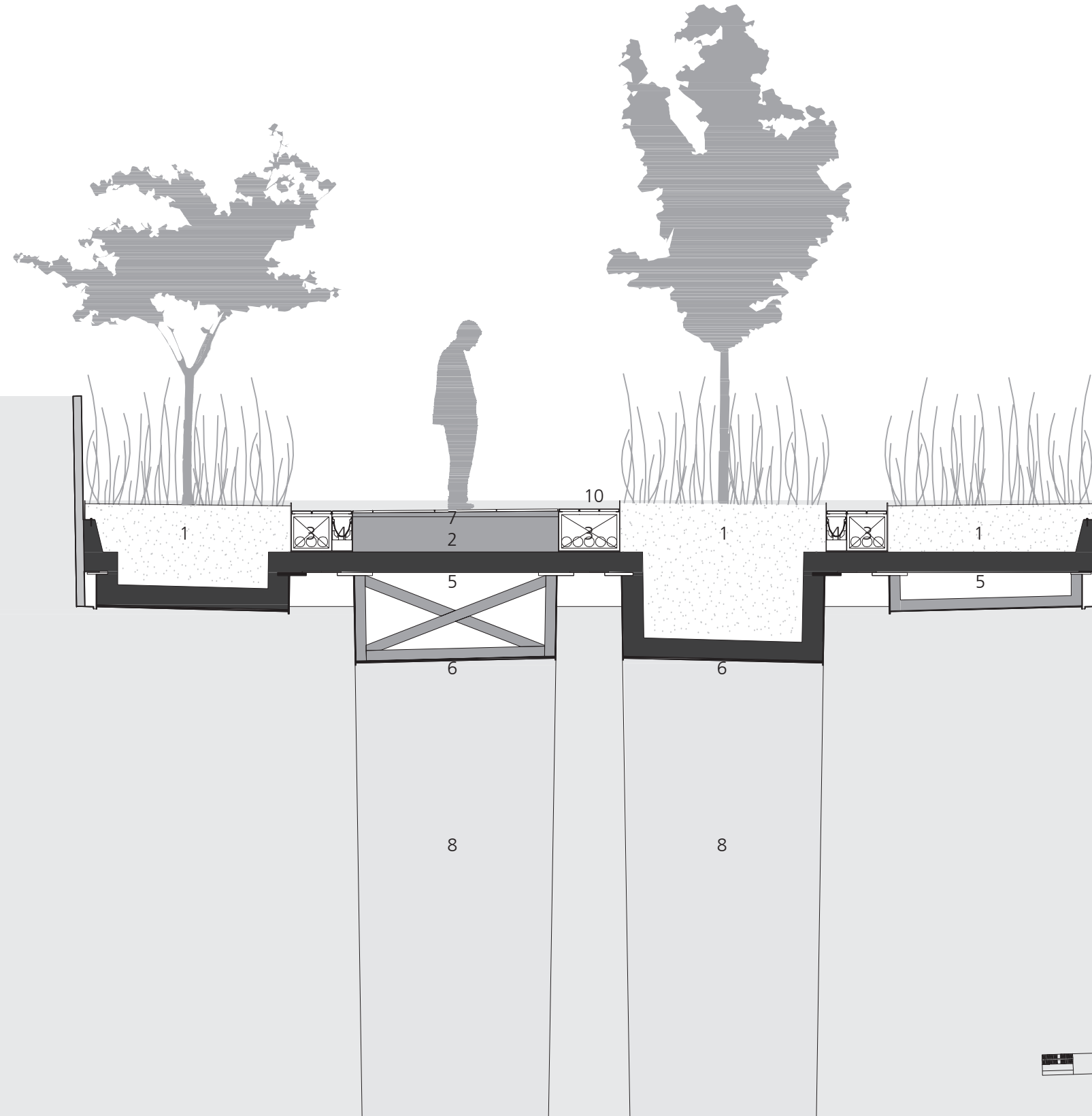
- 1 Gutter
- 2 Walkway
- 3 Gutter for cables
- 4 Concrete
- 5 Truss
- 6 Weather-proof steel
- 7 Tiling
- 8 Welded weather-proof sheet
- 9 Lighting



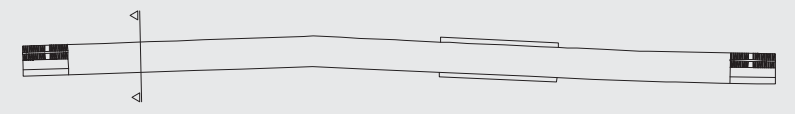
0 100 200 500mm



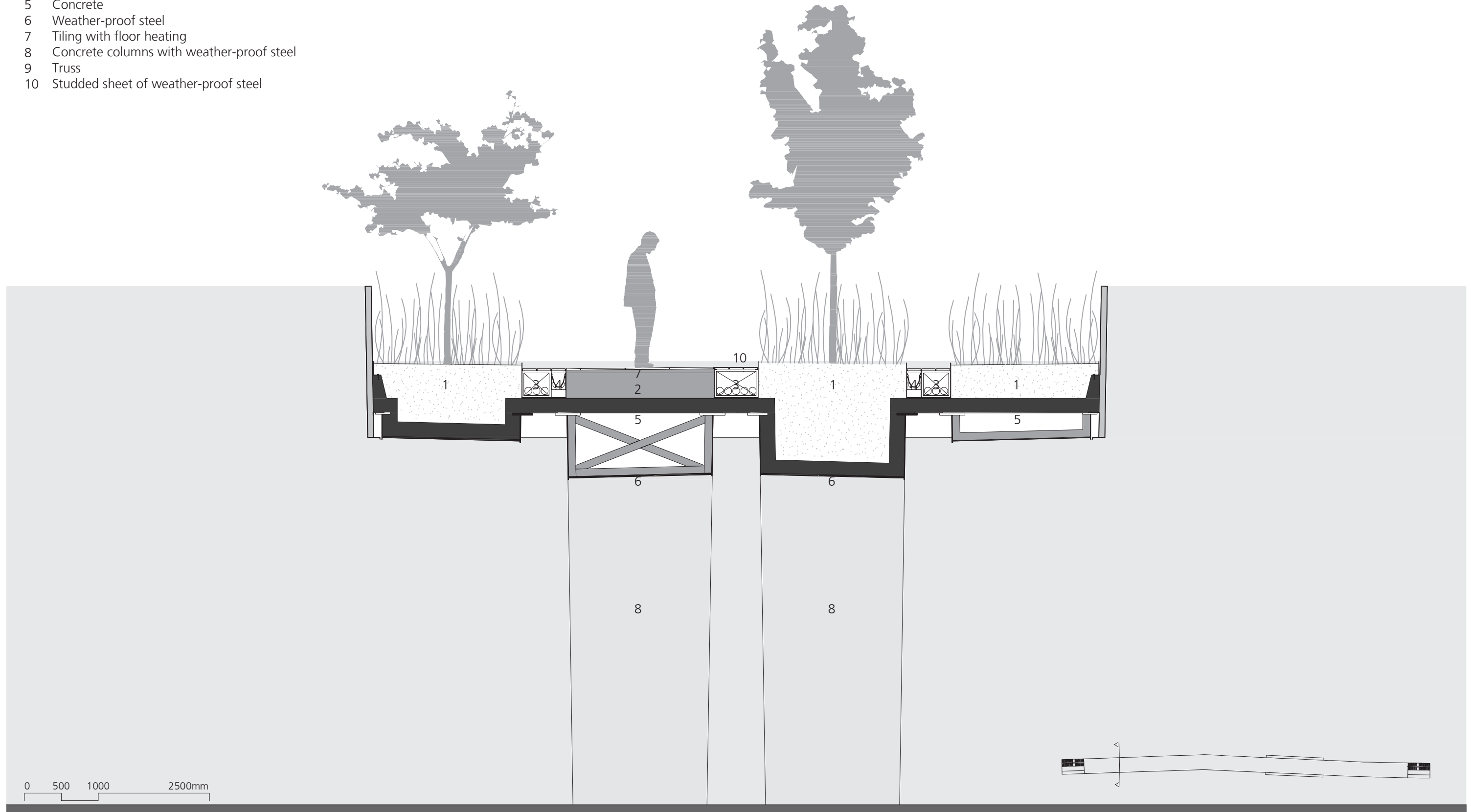
- 1 Planters
- 2 Walkway
- 3 Gutter for cables
- 4 Gutter
- 5 Concrete
- 6 Weather-proof steel
- 7 Tiling with floor heating
- 8 Concrete columns with weather-proof steel
- 9 Truss
- 10 Studded sheet of weather-proof steel



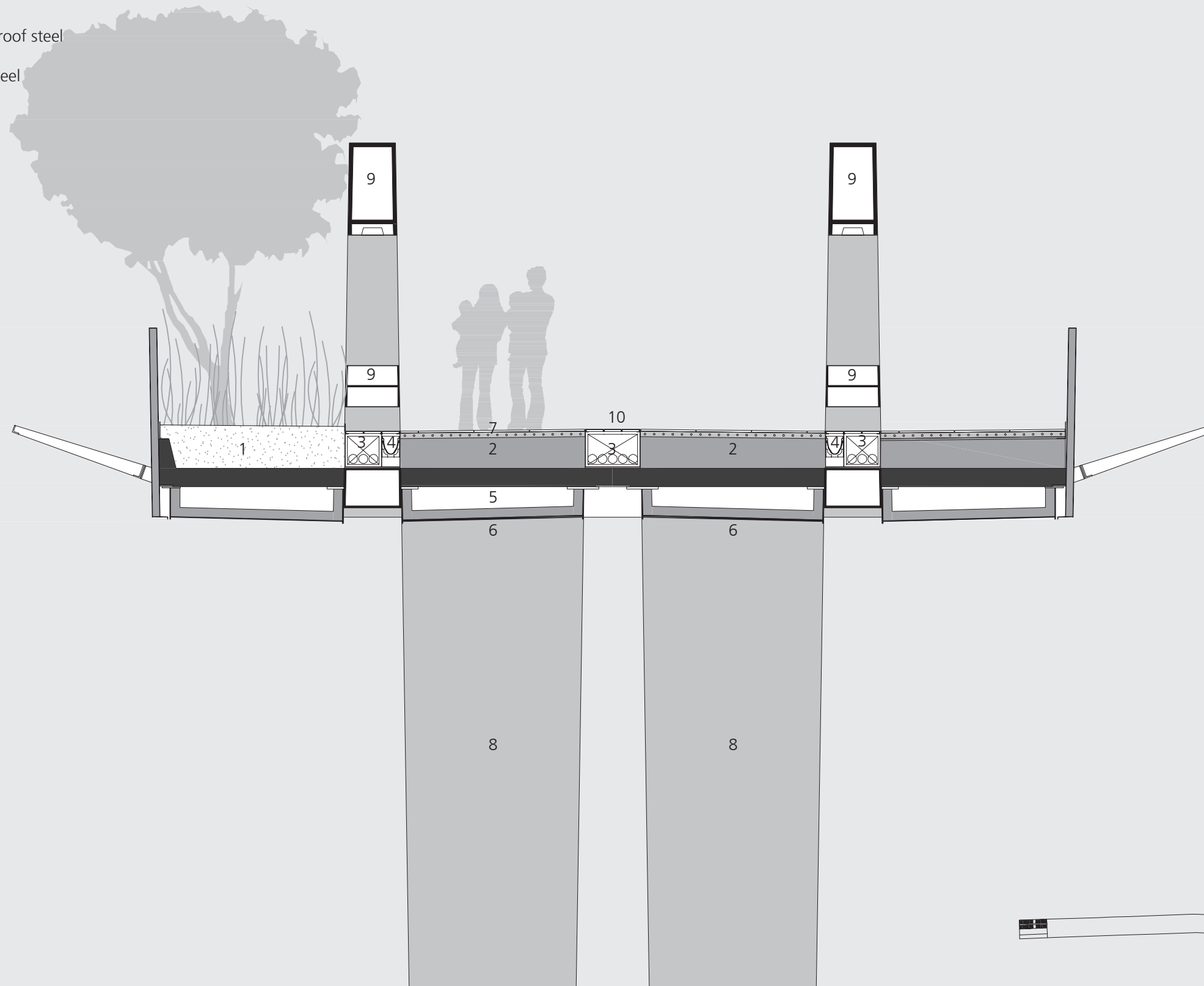
0 500 1000 2500mm



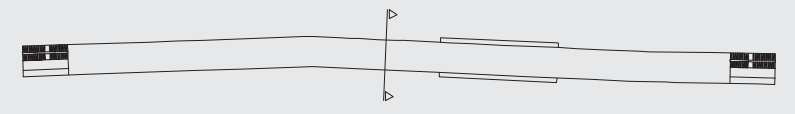
- 1 Planters
- 2 Walkway
- 3 Gutter for cables
- 4 Gutter
- 5 Concrete
- 6 Weather-proof steel
- 7 Tiling with floor heating
- 8 Concrete columns with weather-proof steel
- 9 Truss
- 10 Studded sheet of weather-proof steel

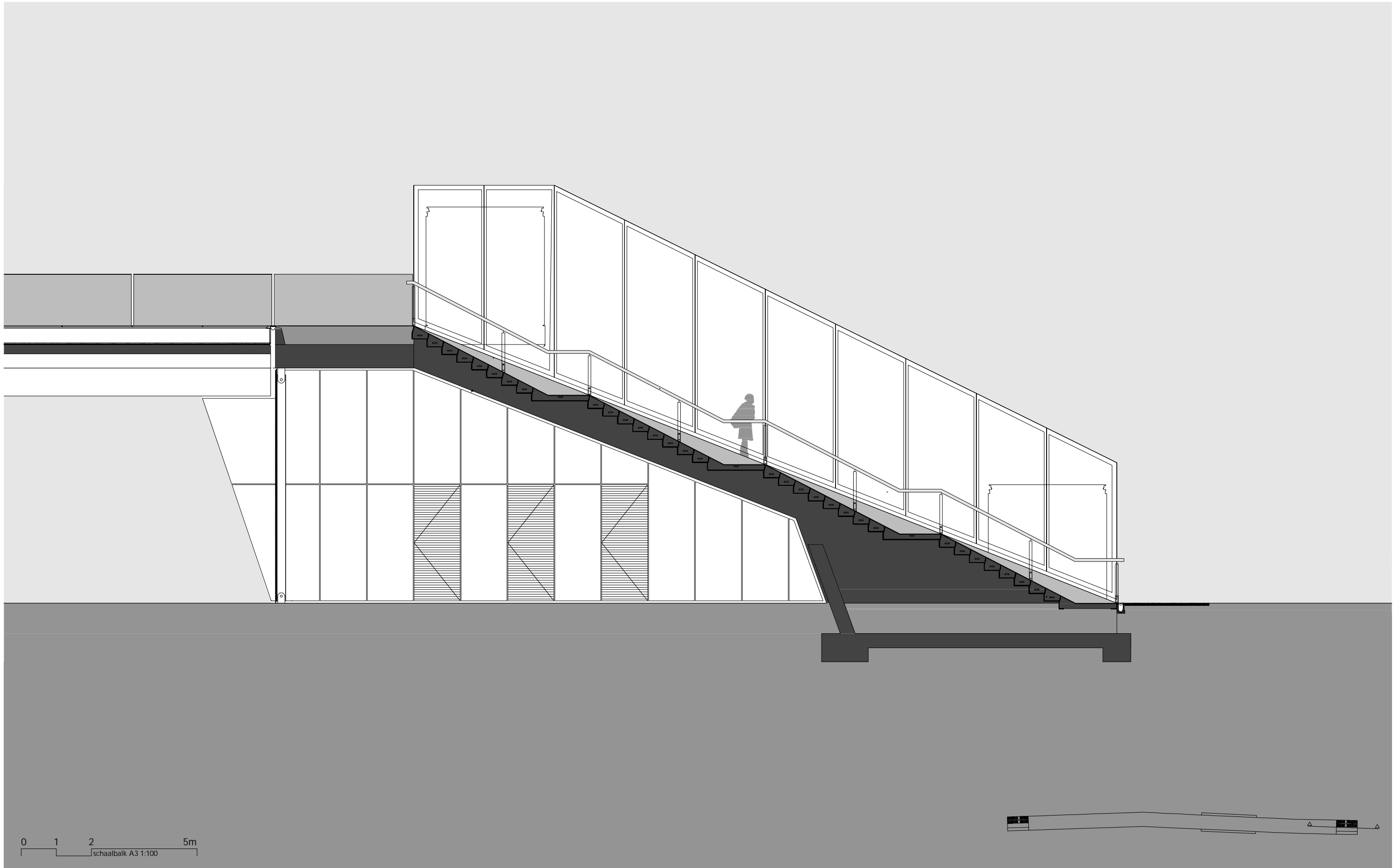


- 1 Planters
- 2 Walkway
- 3 Gutter for cables
- 4 Gutter
- 5 Concrete
- 6 Weather-proof steel
- 7 Tiling with floor heating
- 8 Concrete columns with weather-proof steel
- 9 Truss
- 10 Studded sheet of weather-proof steel

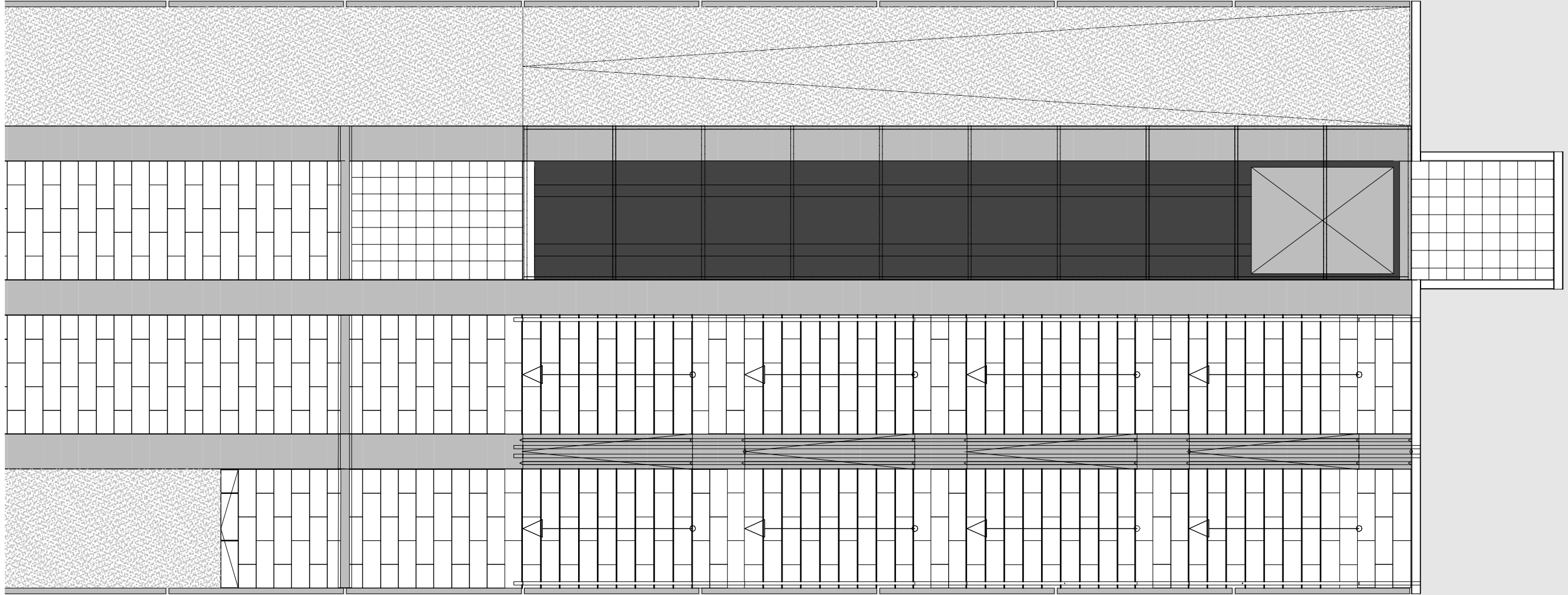


0 500 1000 2500mm

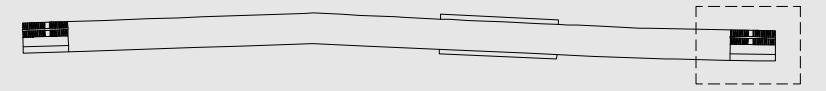


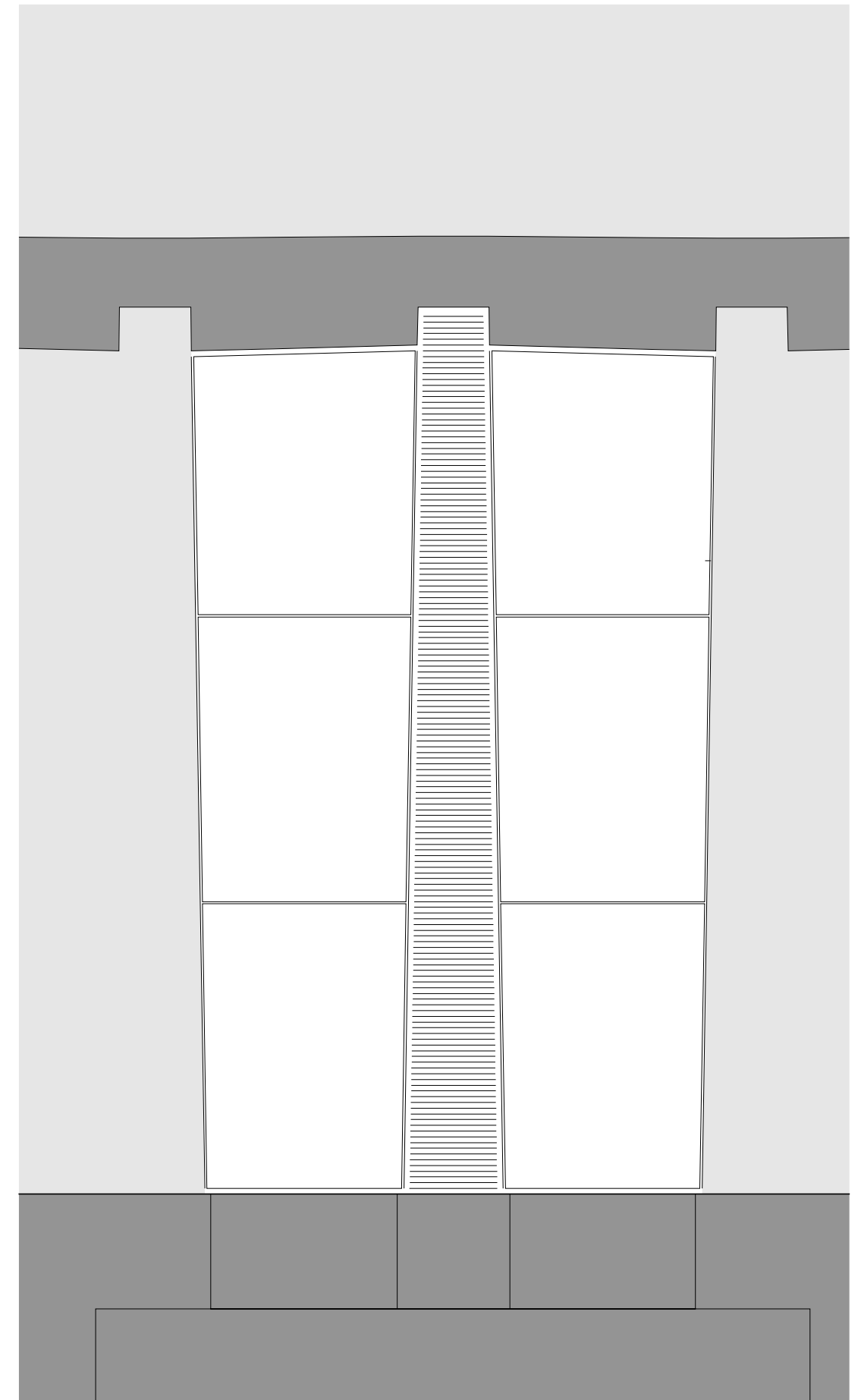
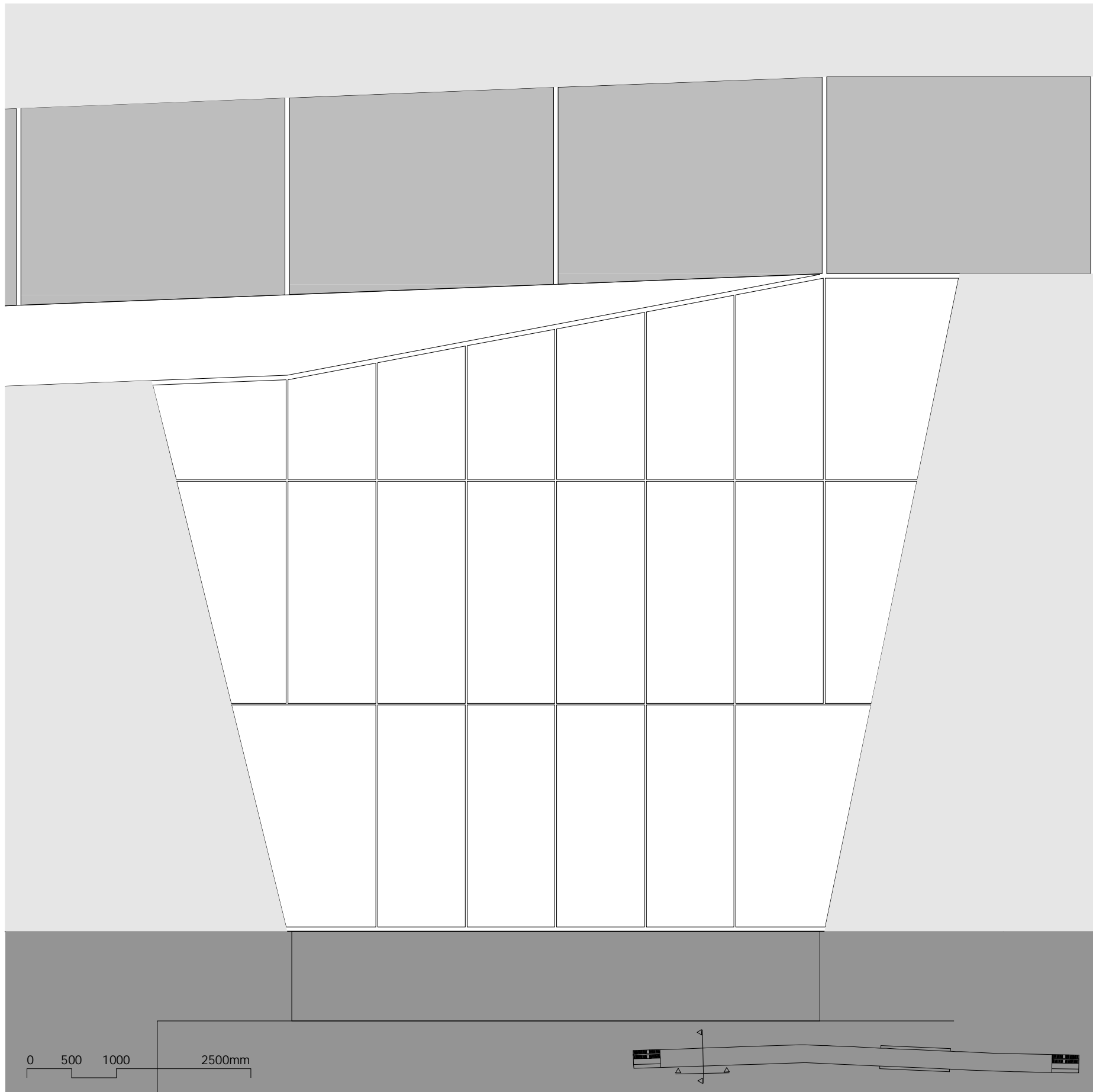






0 1 2 5m





- 1 Lichtgewicht beton
- 2 Breedplaatvloer
- 3 Aangelaste doken
- 4 Keramische tegel
- 5 Hoofdraagconstructie beton
- 6 Schetsplaat
- 7 Weervast-staal
- 8 Hoofdraagconstructie weervast-staal

