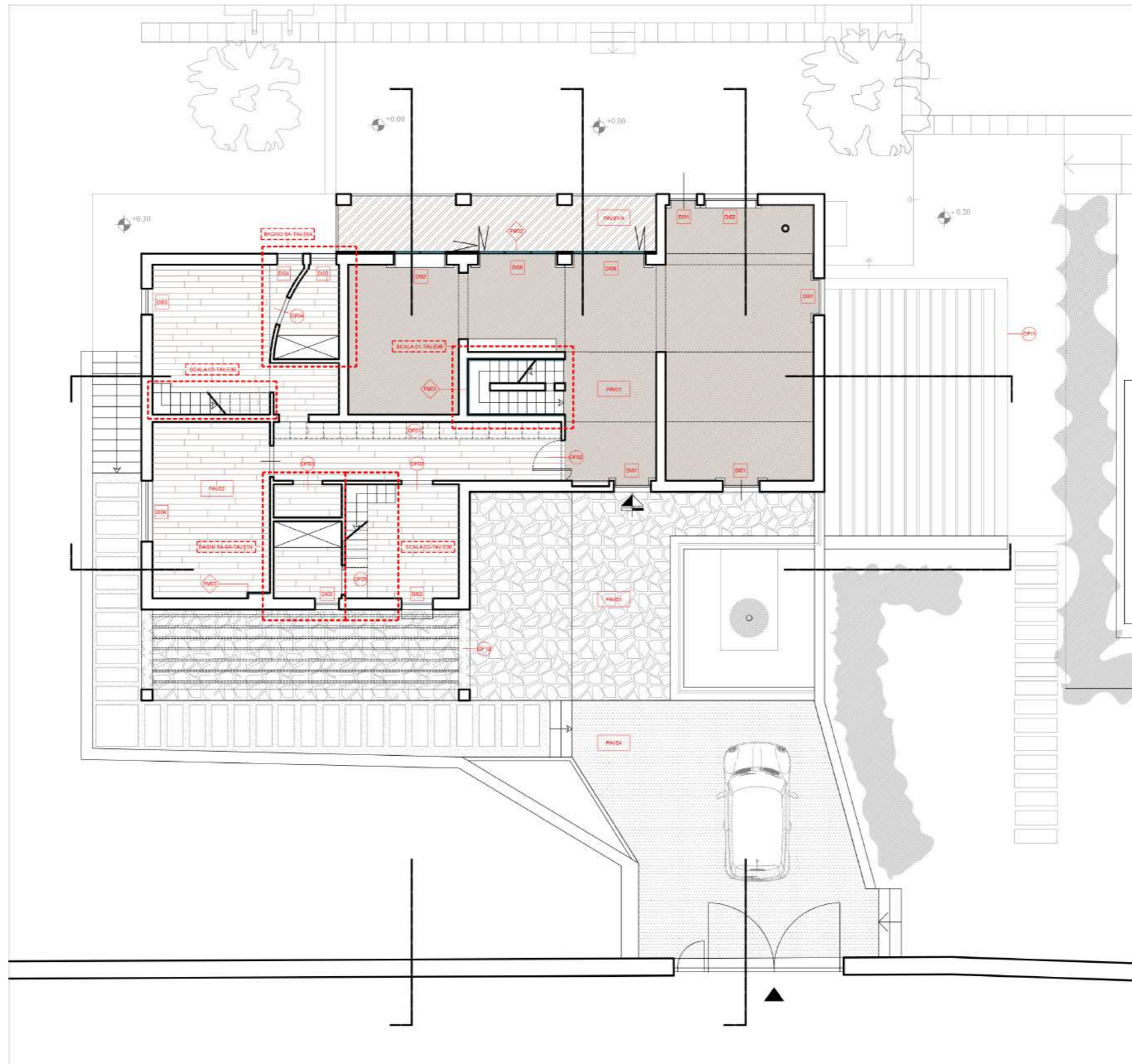
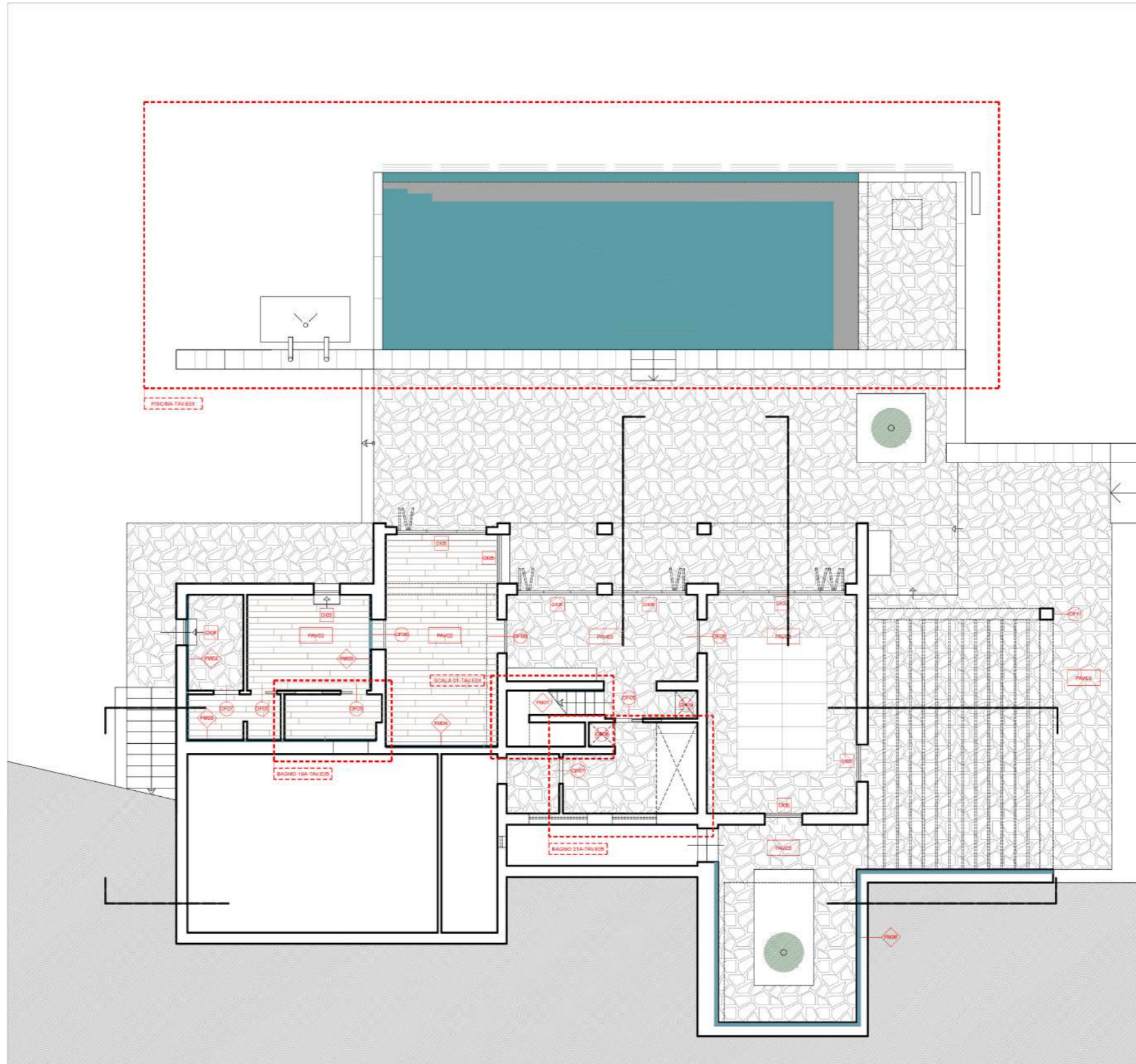


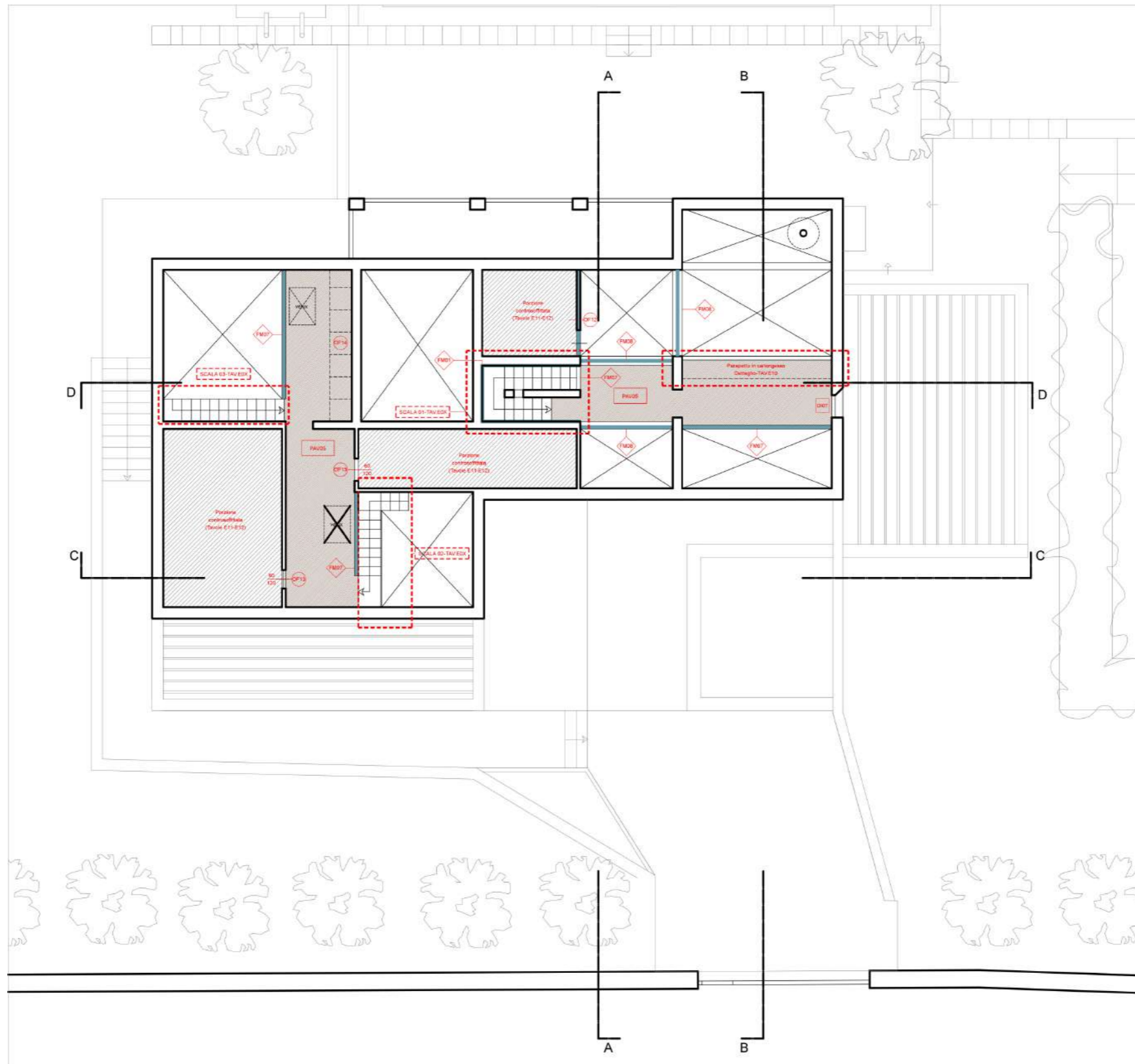
Villa Keil-Towler

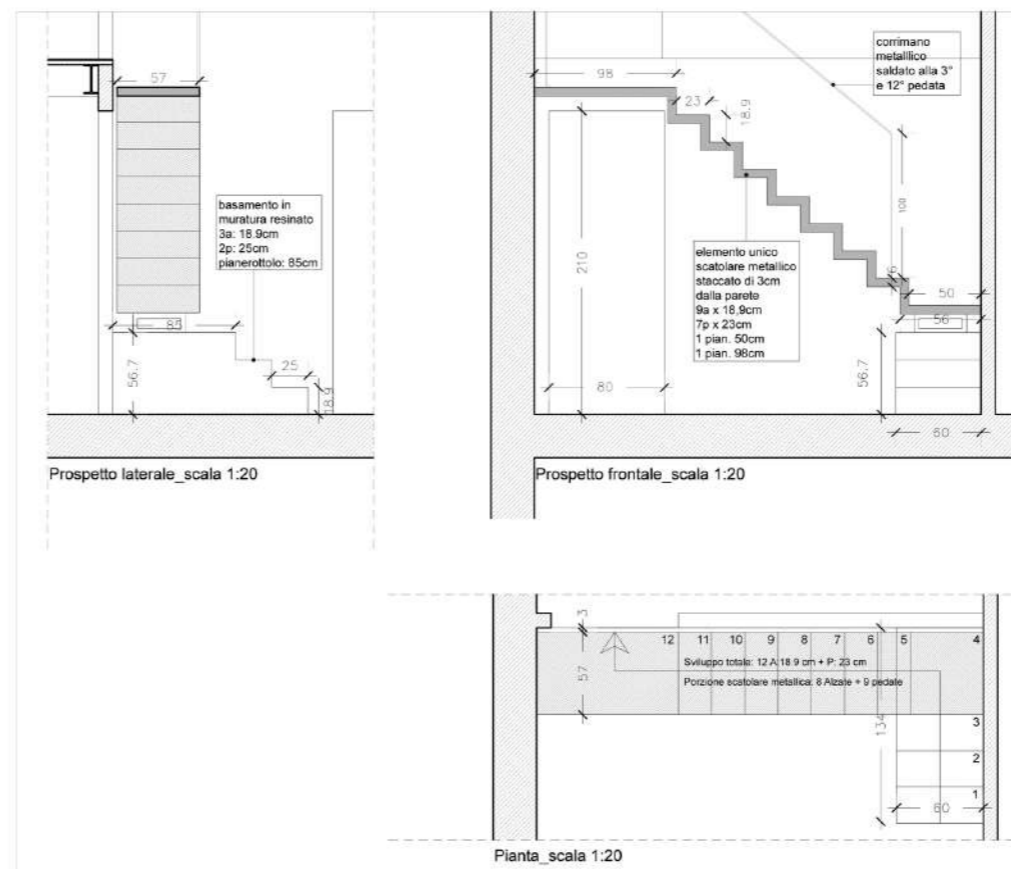
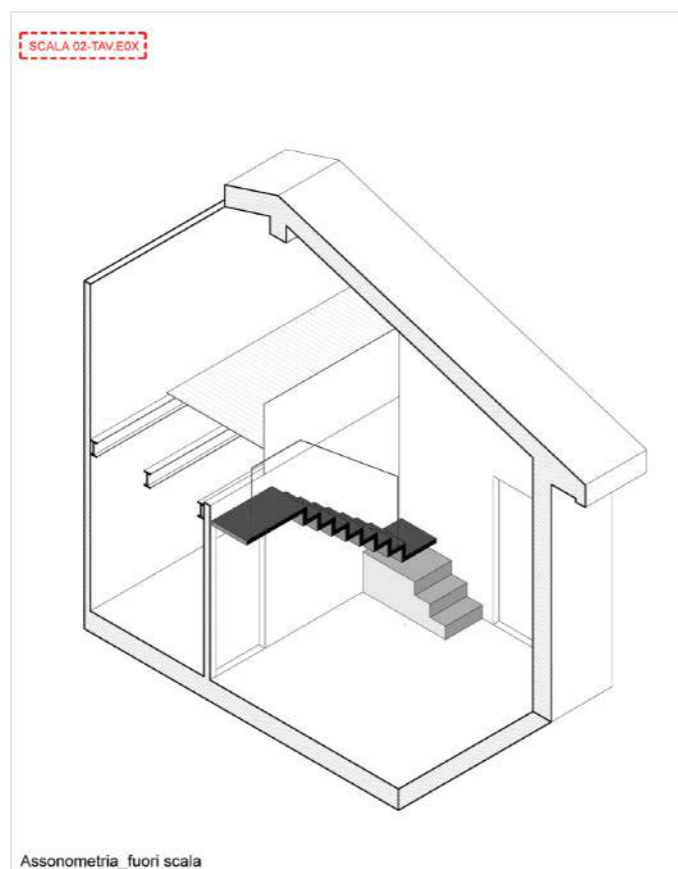
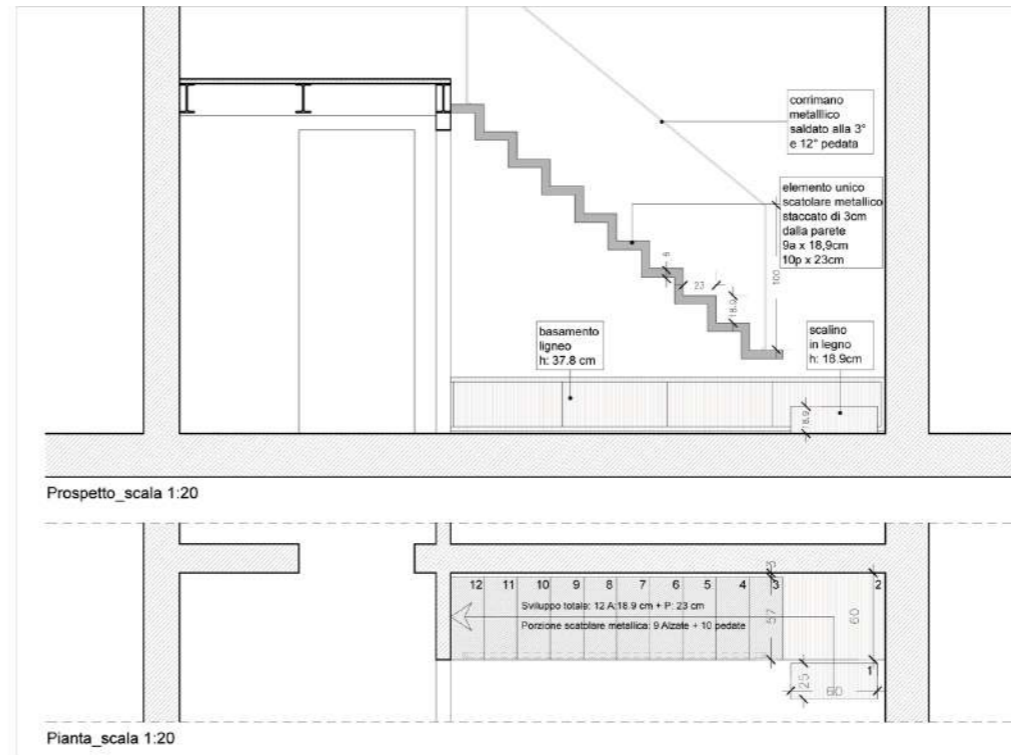
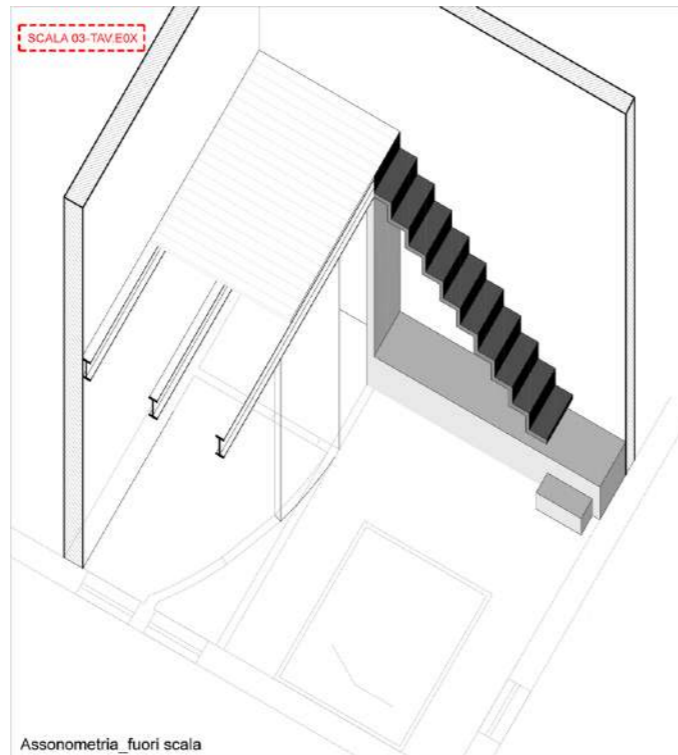
Via Monte alle Croci, 12/B Firenze

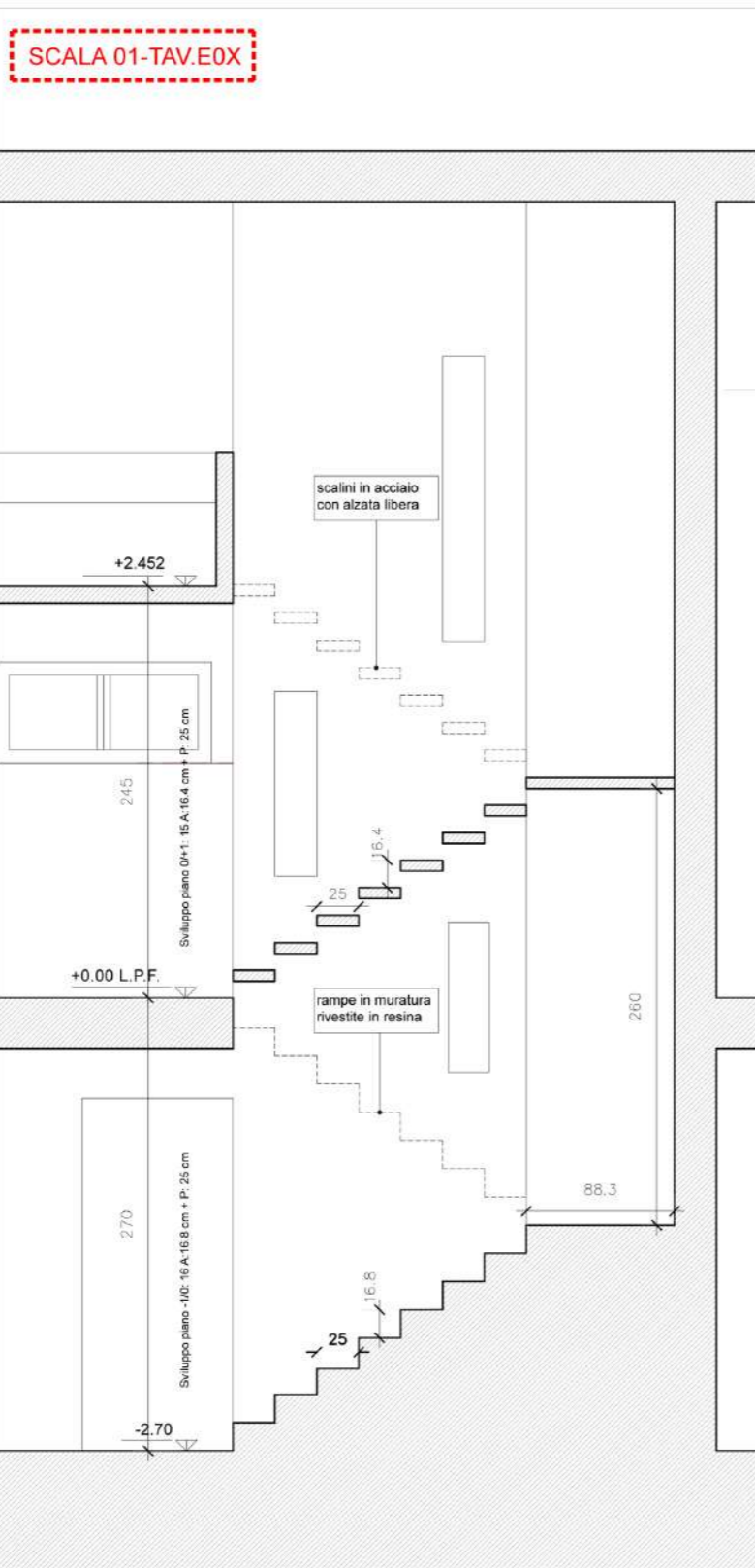




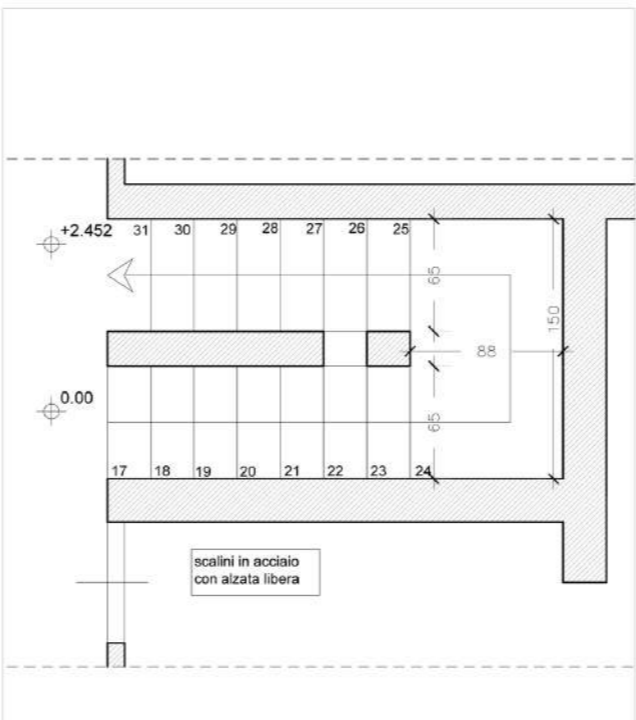




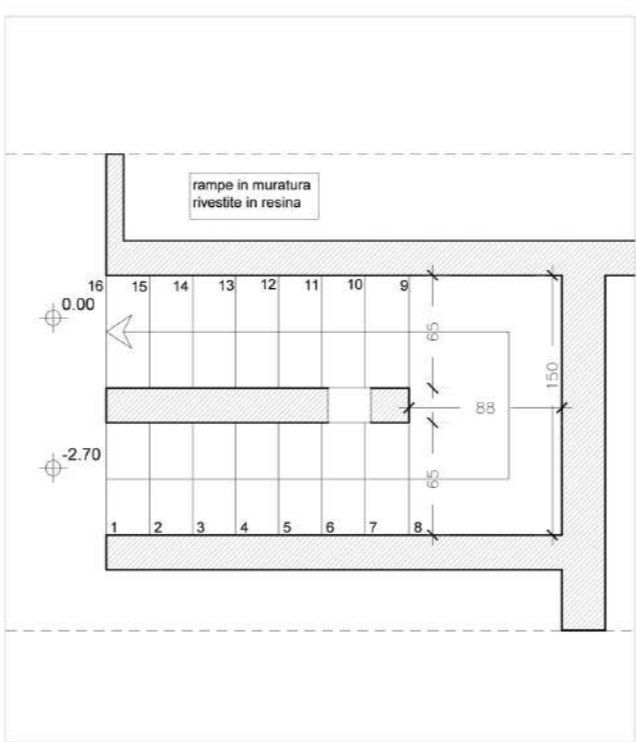




Sezione terra-tetto_ scala 1:20

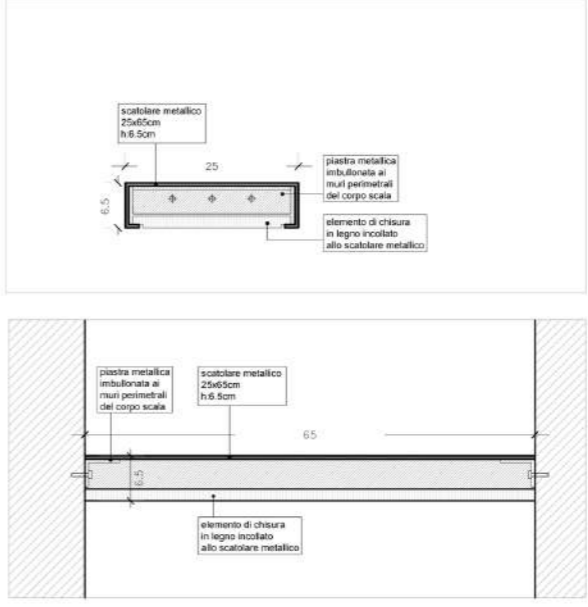


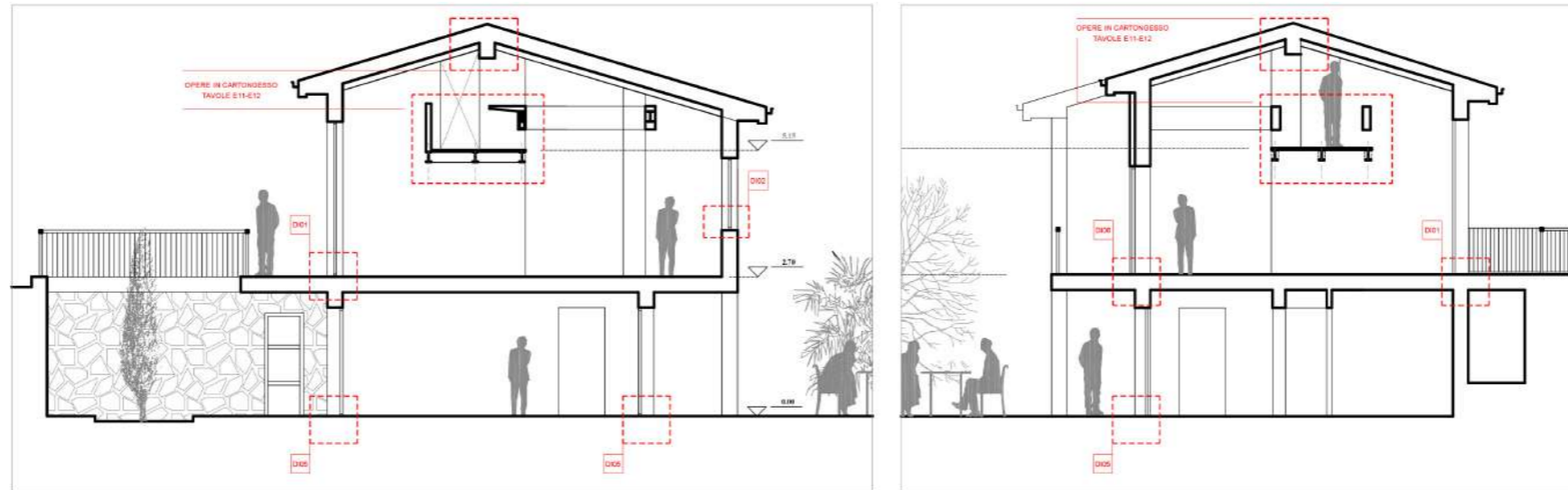
Pianta scala da p0 a p+1_ scala 1:20



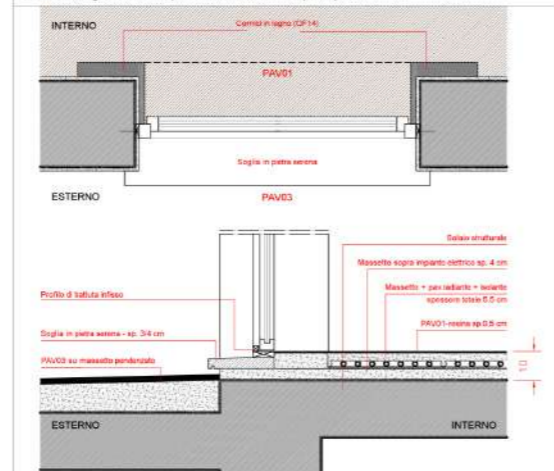
Pianta scala da p-1 a p0_ scala 1:20

Sezione trasversale e longitudinale scalino in acciaio_ scala 1:5

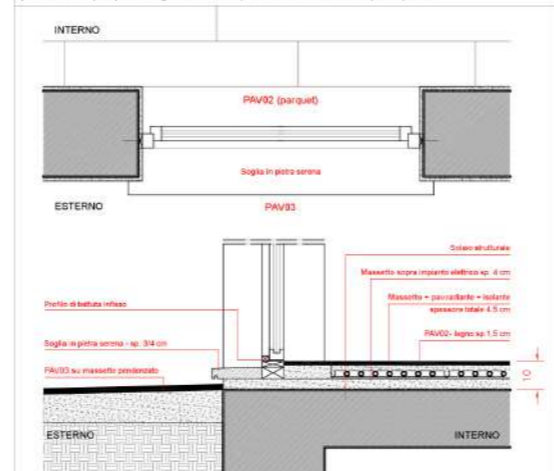




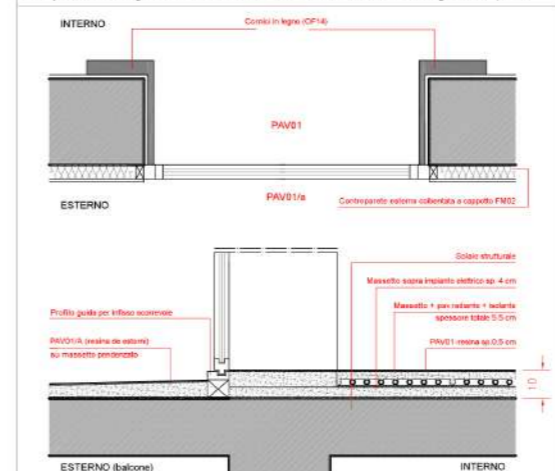
D101 - Dettaglio porta-finestra centro mazzetta con cornici in legno, con soglia interna filo pavimento in resina e soglia esterna in pietra serena ribassata - piano primo



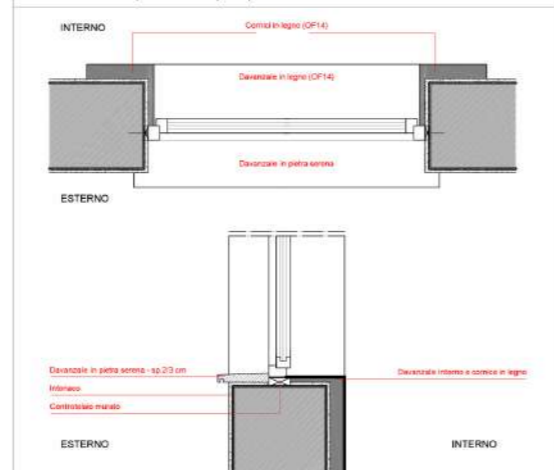
D103 - Dettaglio porta-finestra centro mazzetta senza cornici in legno, con soglia interna filo pavimento in parquet e soglia esterna in pietra serena ribassata - piano primo



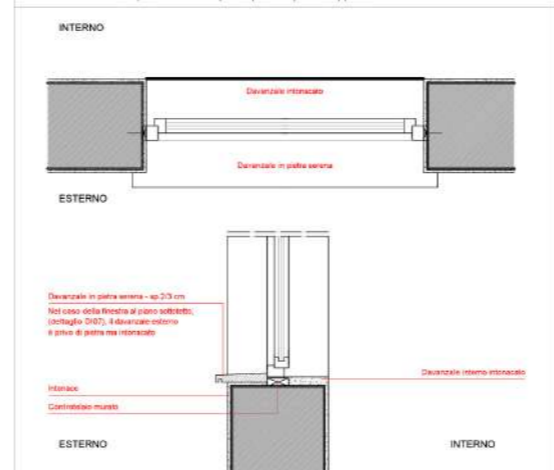
D106 - Dettaglio porta finestra scorrevole a libro, filo esterno mazzetta, con soglia interna in resina a filo pavimento e soglia esterna in resina ribassata di circa 2 cm. Cornici in legno. Piano primo.



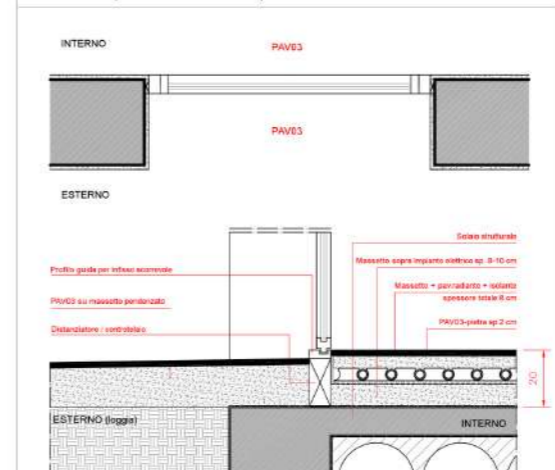
D102 - Dettaglio finestra centro mazzetta con cornici in legno, davanzale interno in legno, davanzale esterno in pietra serena - piano primo



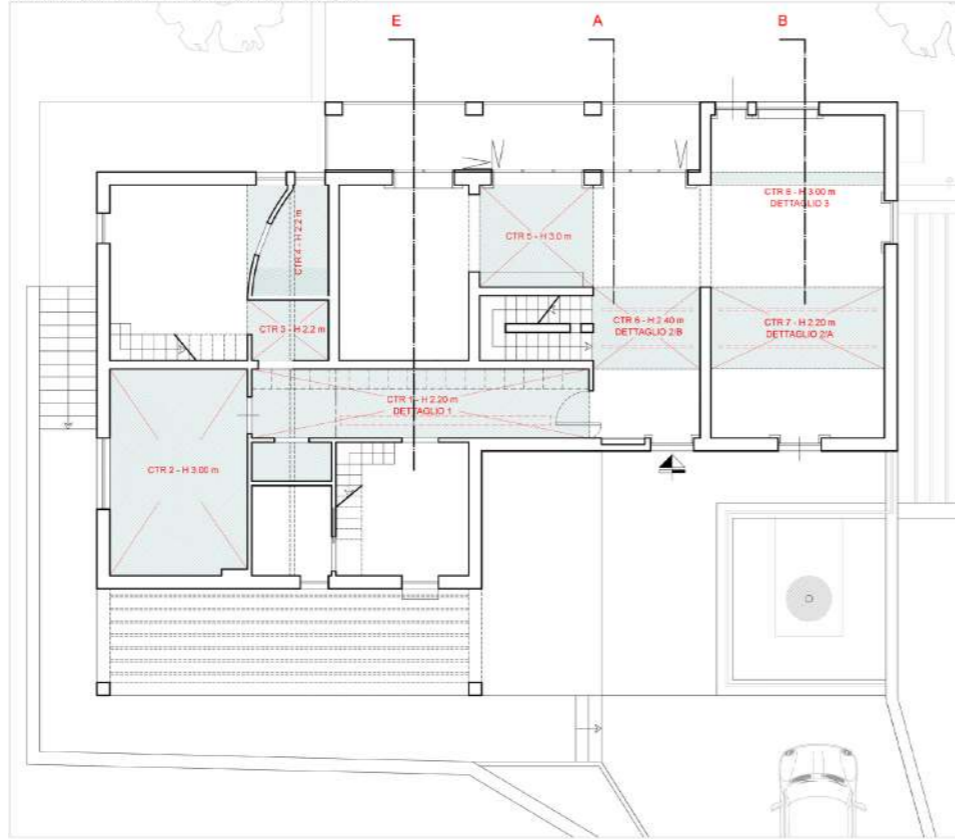
D104/D107 - Dettaglio finestra centro mazzetta senza cornici in legno, davanzale interno intonacato, davanzale esterno in pietra serena - piano primo e piano soppalco



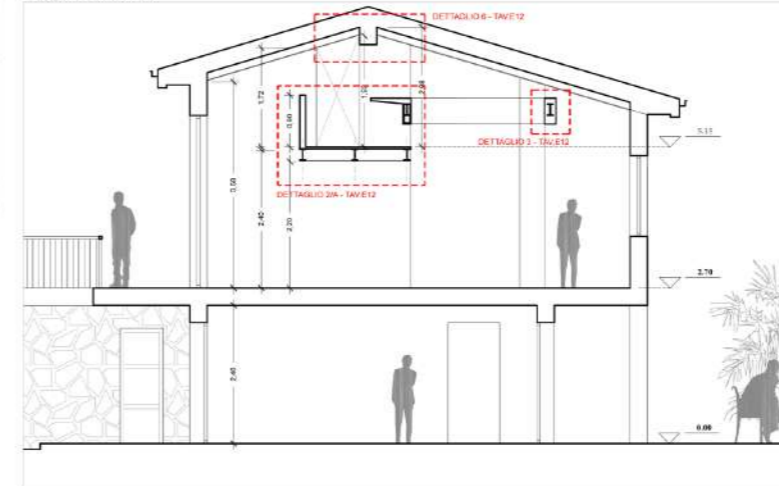
D105 - Dettaglio porta finestra scorrevole a libro, filo interno mazzetta, soglia esterna in continuità con la pavimentazione esterna in pietra. Imbotte intonacato. Piano terra.



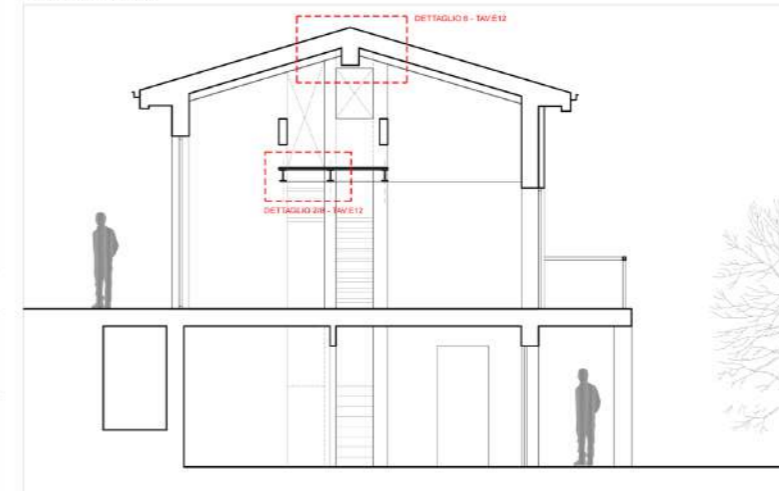
PIANTA DEI CONTROSOFFITTI DEL PIANO PRIMO - fuori scala



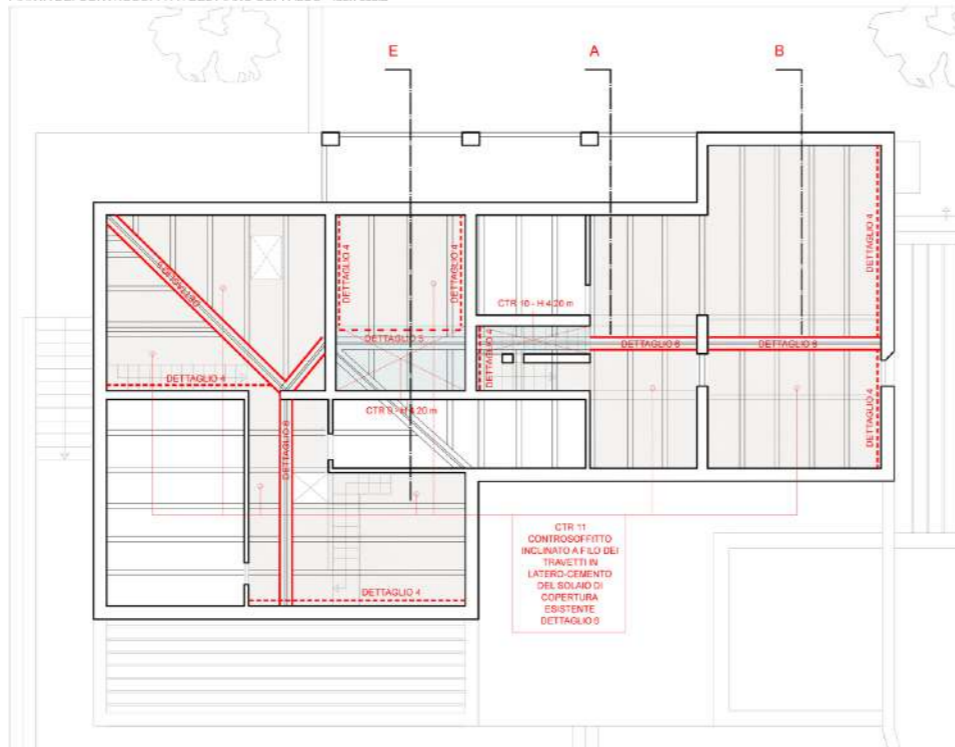
SEZIONE B - scala 1/50



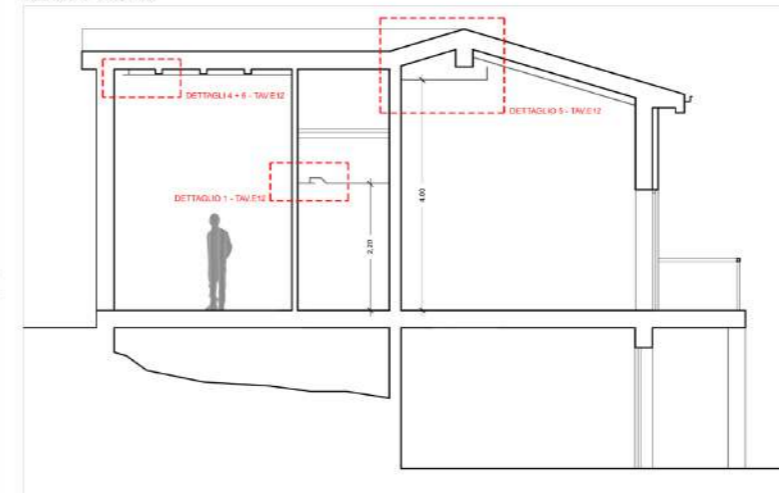
SEZIONE A - scala 1/50



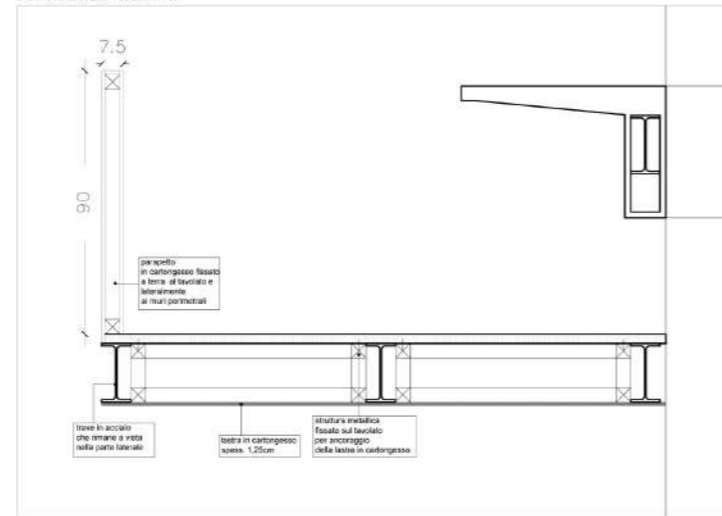
PIANTA DEI CONTROSOFFITTI DEL PIANO SOPPALCO - fuori scala



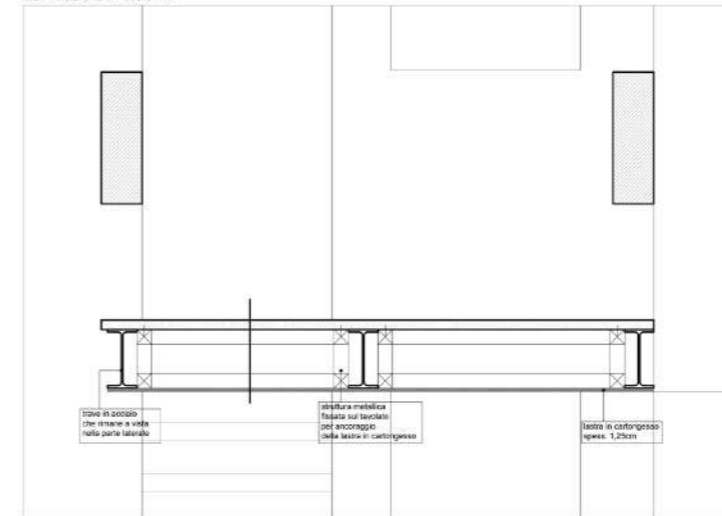
SEZIONE E - scala 1/50



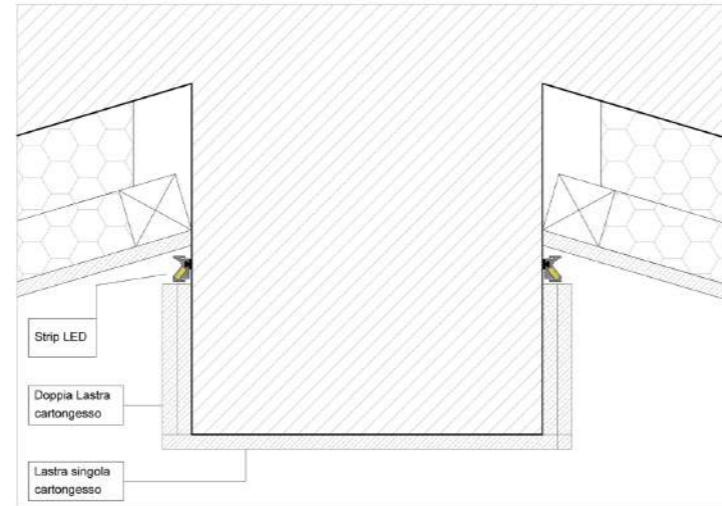
DETTAGLIO 2/A - scala 1/10



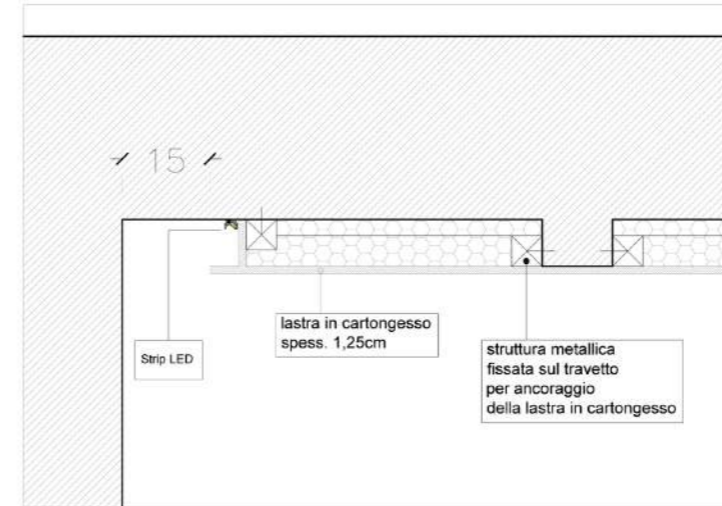
DETTAGLIO 2/B - scala 1/5



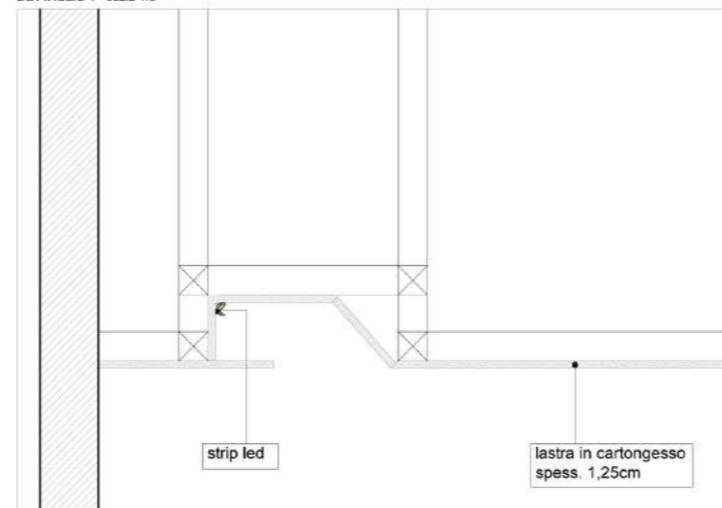
DETTAGLIO 6 - scala 1/5



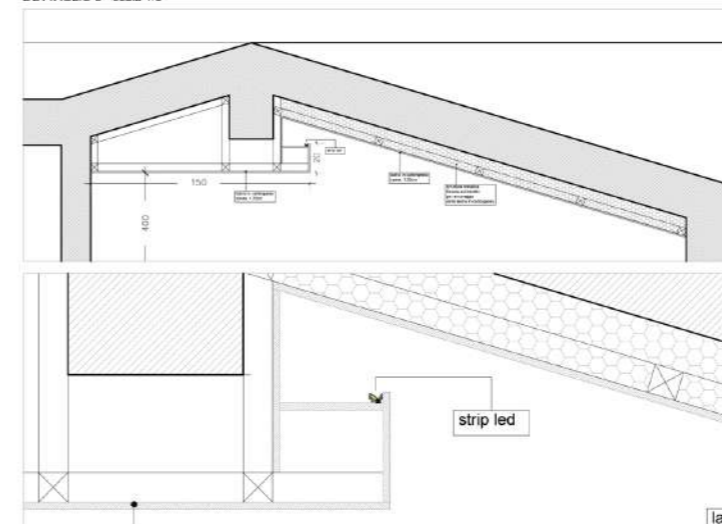
DETTAGLIO 4 - scala 1/5

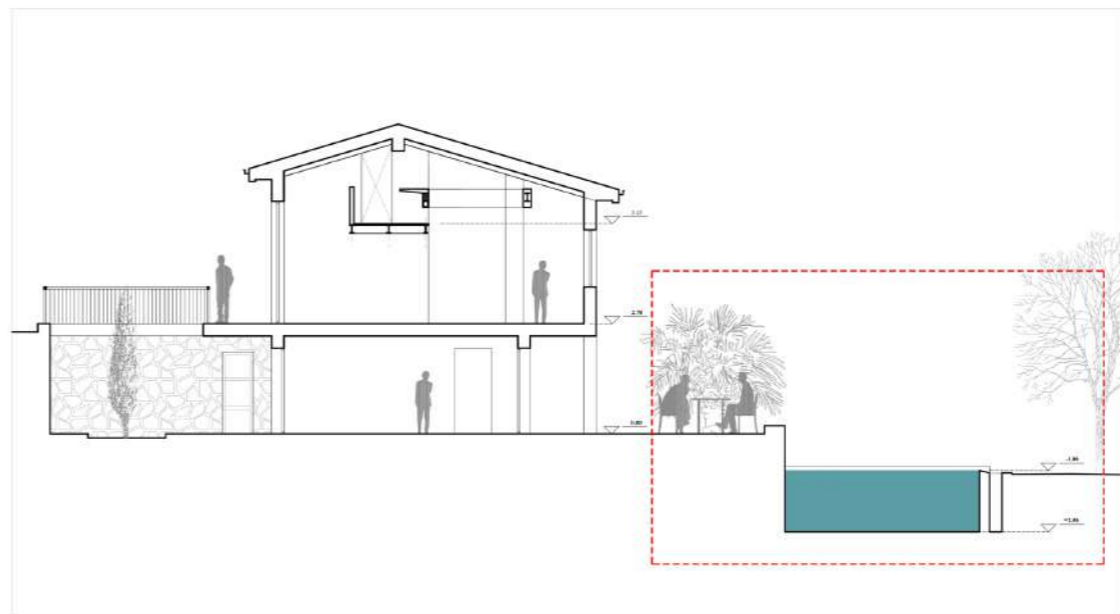
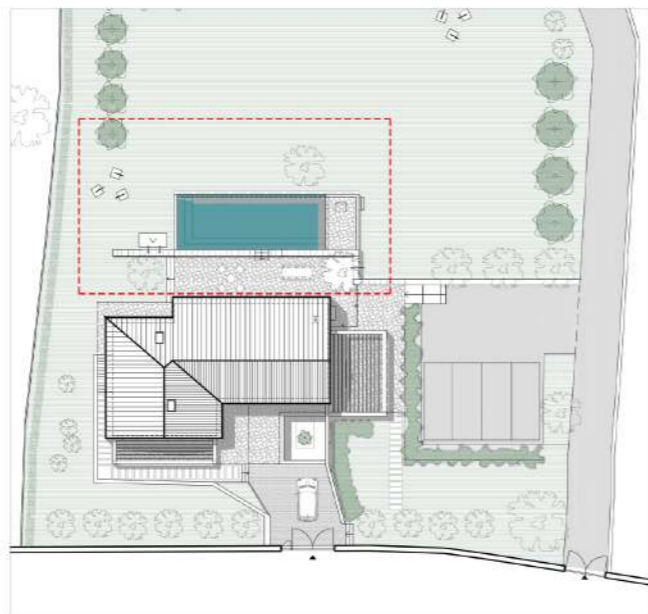
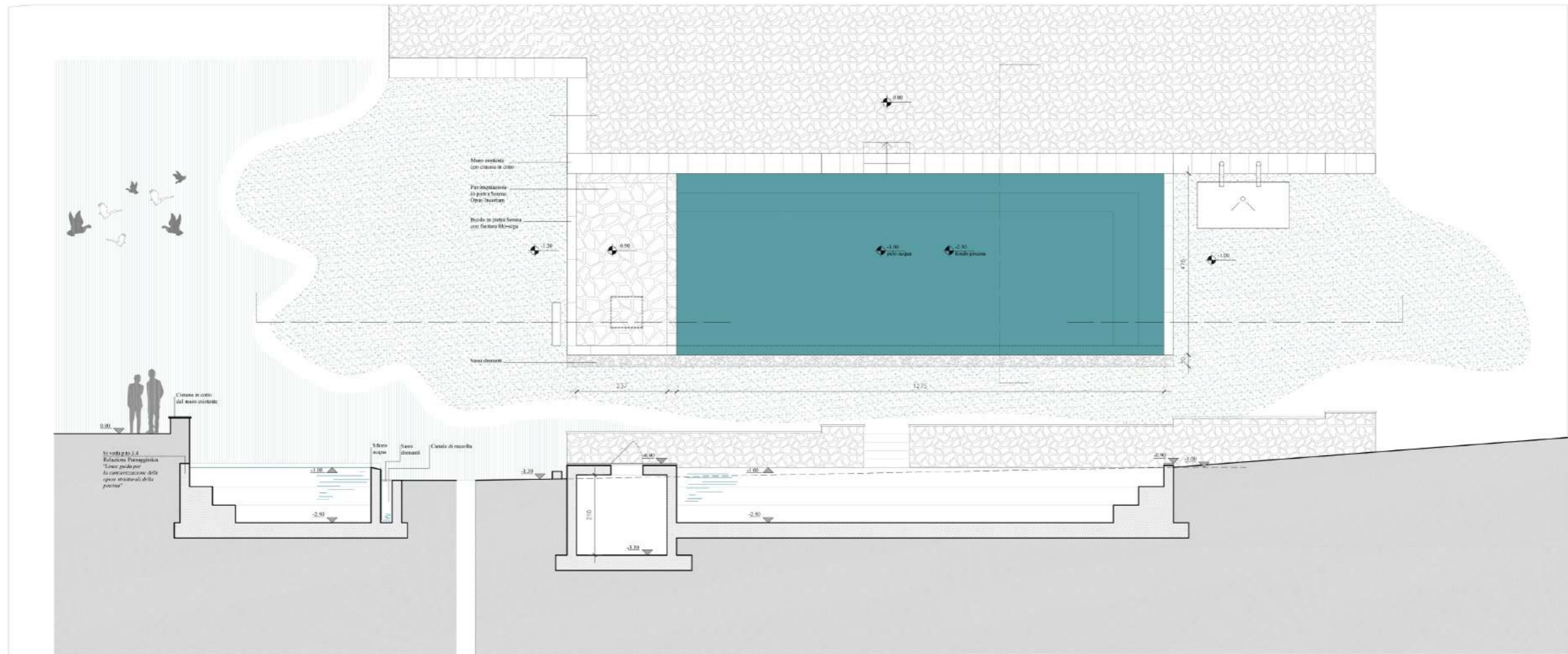


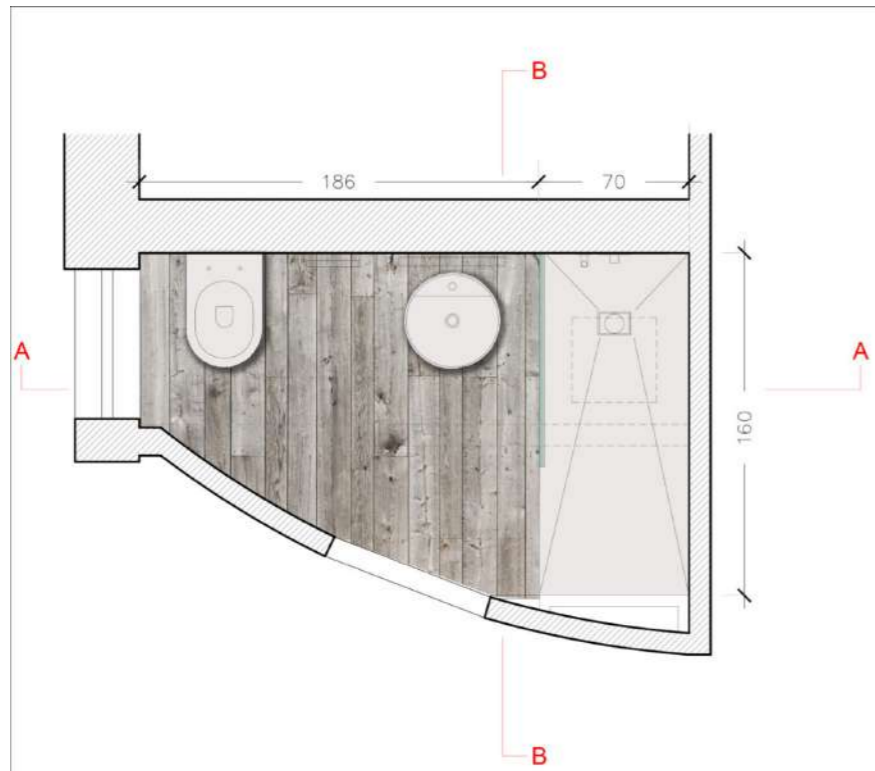
DETTAGLIO 1 - scala 1/5



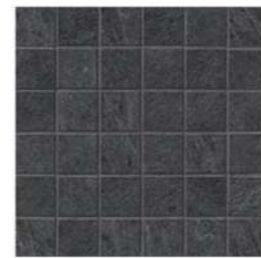
DETTAGLIO 5 - scala 1/5







freestanding ceramic Nic design



LEA_Waterfall dark flow mosaico
52,20 €/mq



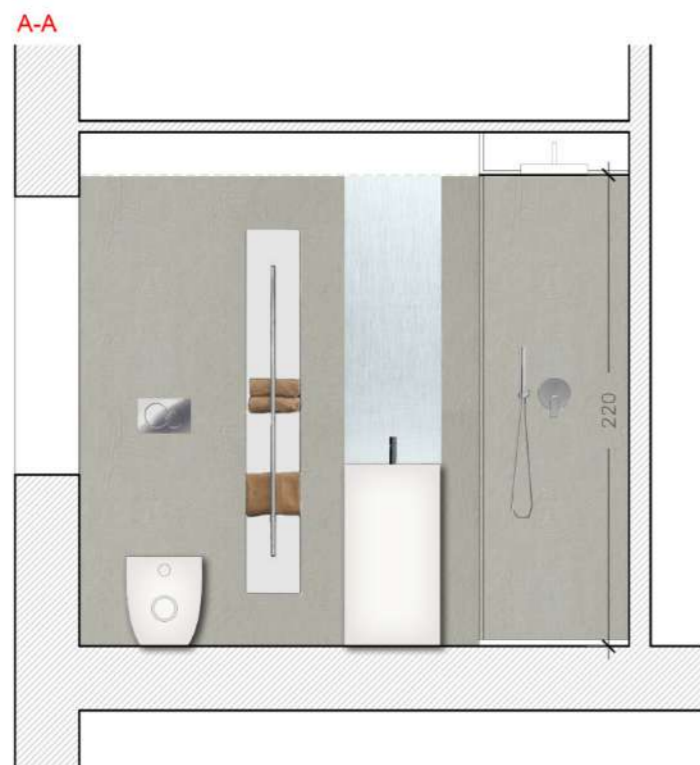
Head Showers Newform_ n. 683



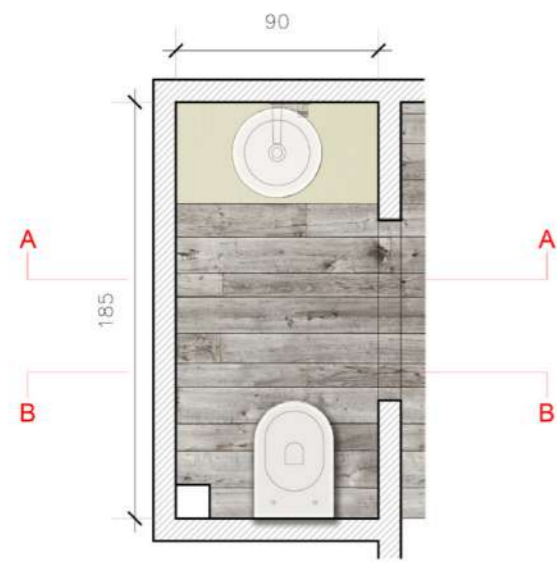
Showers Set Newform_ n. 823



Graff_ Java series



B. 05
Progetto esecutivo bagni_ via Monte alle Croci, 12/B Firenze_ proprietà: Keil-Towler



Sink_Valdama Seed Ø40cm h:18cm



freestanding ceramic Nic design



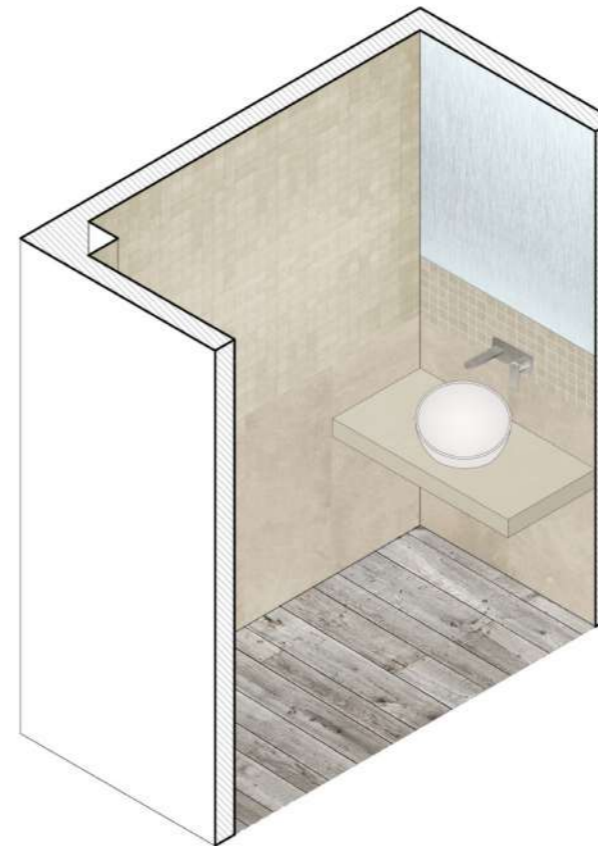
LEA_Waterfall Ivory flow mosaico 52,20 €/mq



LEA_Waterfall Ivory flow 39,00€/mq



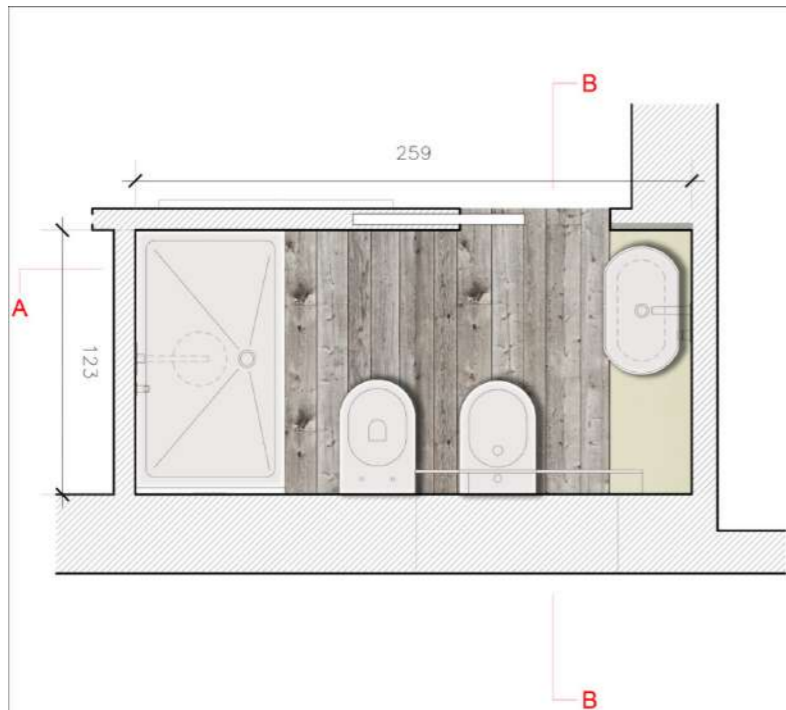
Graff_Java series



B. 08
Progetto esecutivo bagni _ via Monte alle Croci, 12/B Firenze _ proprietà: Keil-Towler



B. 09
 Progetto esecutivo bagni_ via Monte alle Croci, 12/B Firenze_ proprietà: Keil-Towler



Sink_Globo Forty3 60x35cm



Radiator Serie T - Antrax



Head Showers Newform_n. 67715



LEA_Waterfall Ivory flow mosaico
52,20€/mq



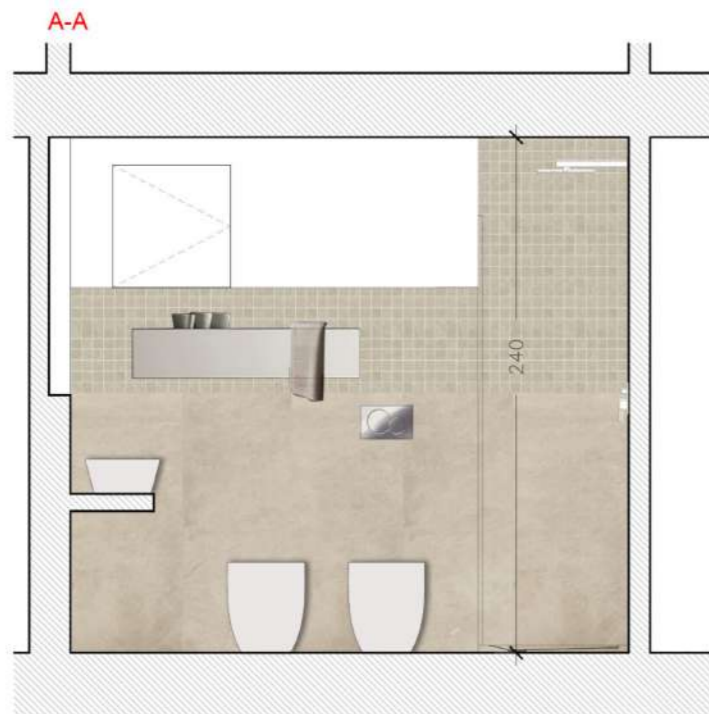
LEA_Waterfall Ivory flow
39,00€/mq



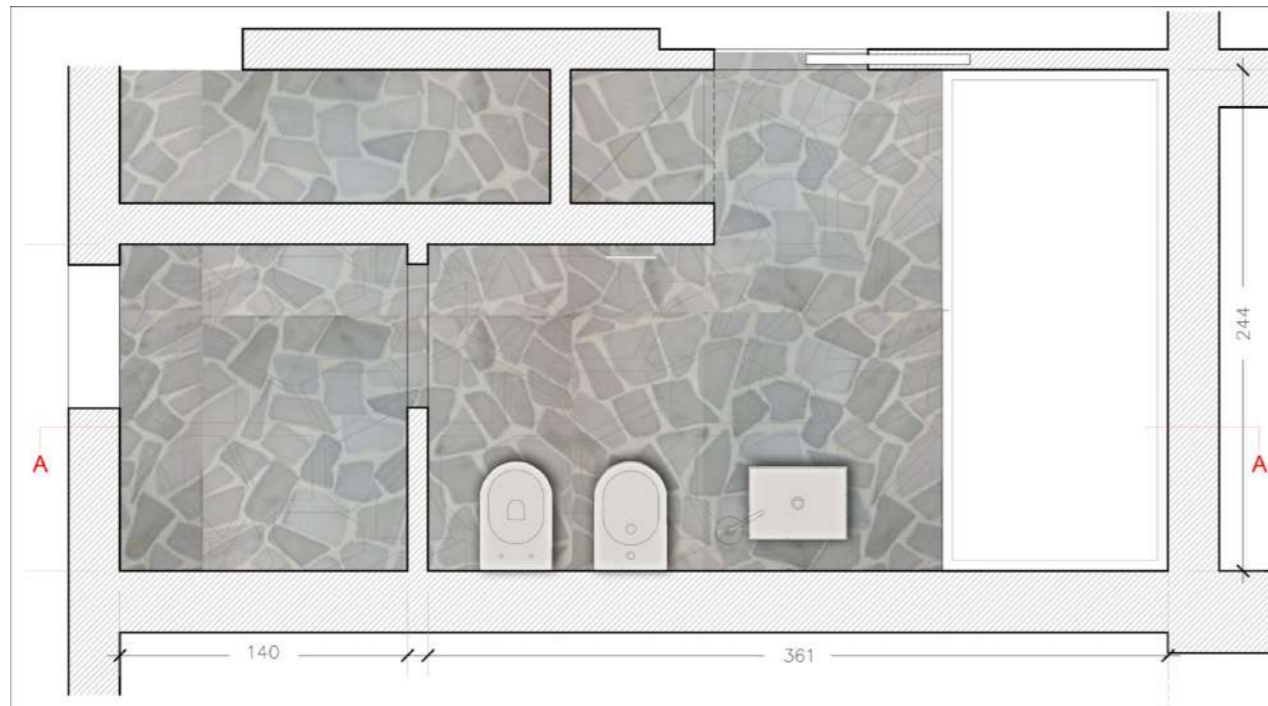
Showers Set Newform_n. 823



Graff_Java series



B. 19
Progetto esecutivo bagni_ via Monte alle Croci, 12/B Firenze_ proprietà: Keil-Towler



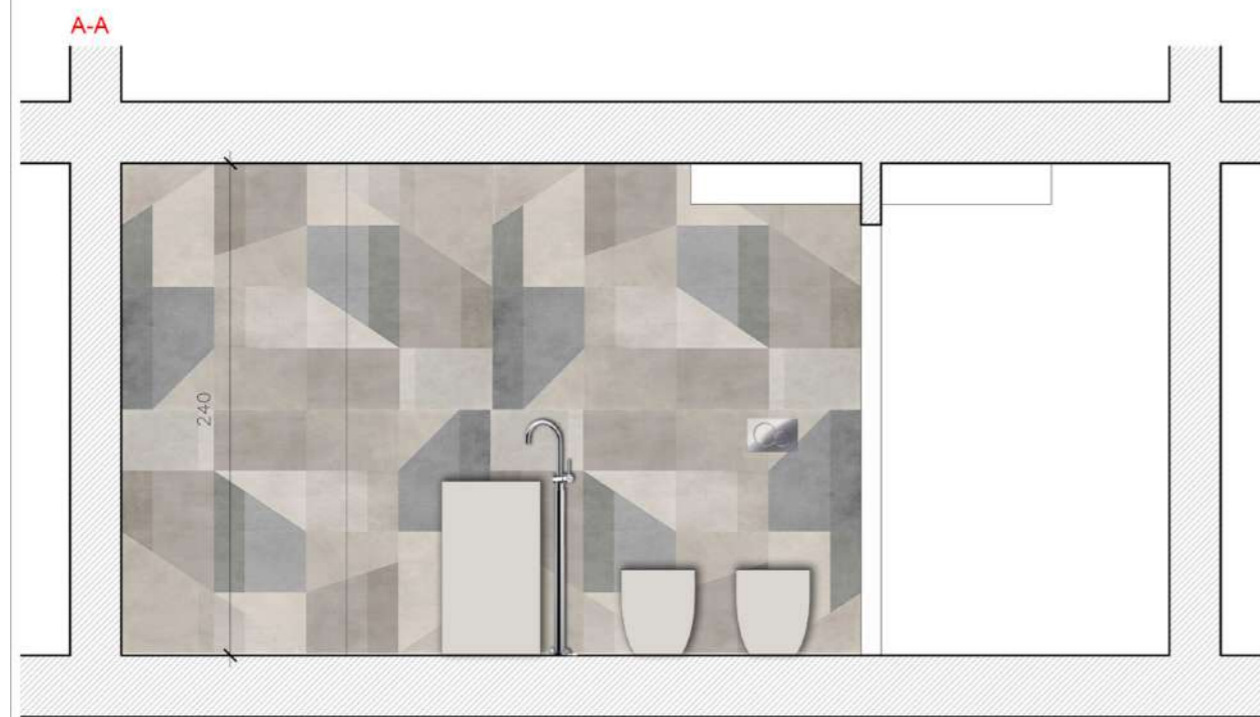
Marazzi_Achimia Greige Decoro – 73,45€/mq



freestanding sink Rexa 36x48



mixer Newform – XT



B. 21
Progetto esecutivo bagni_ via Monte alle Croci, 12/B Firenze_ proprietà: Keil-Towler















