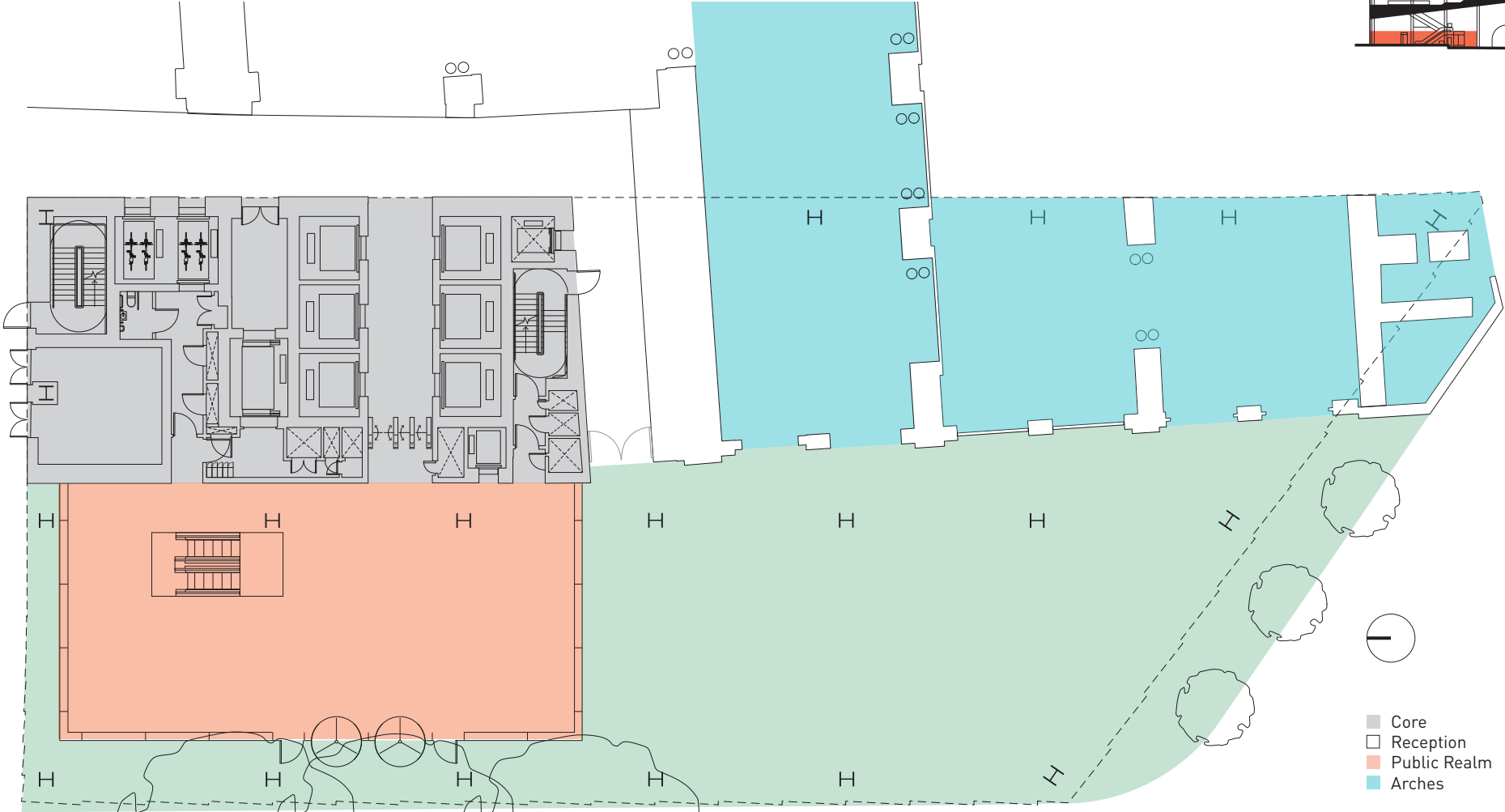
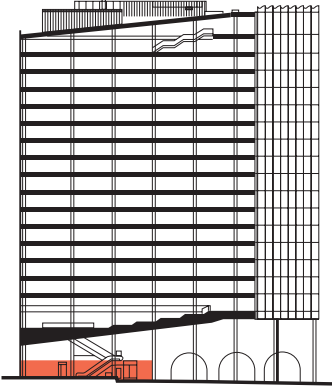


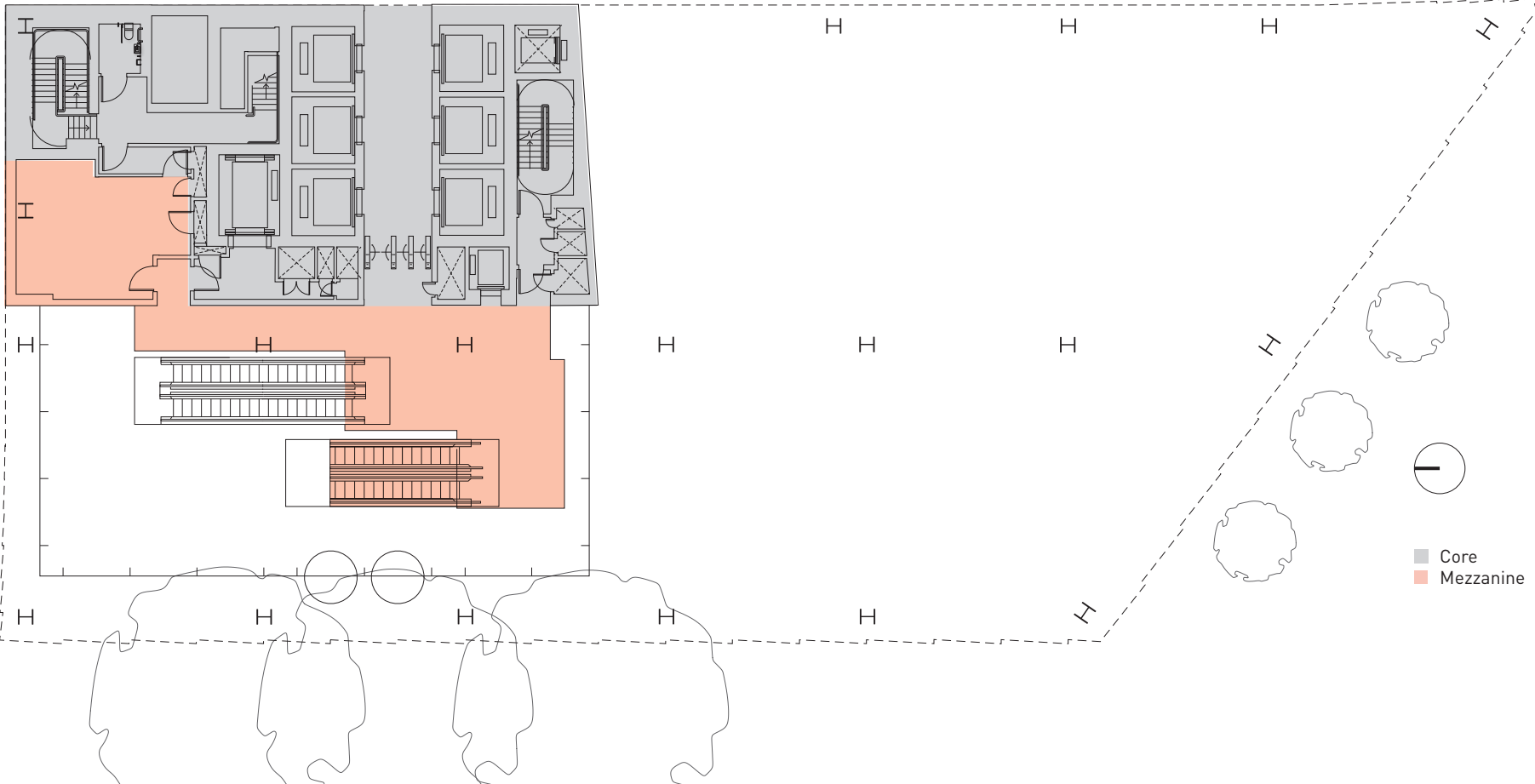
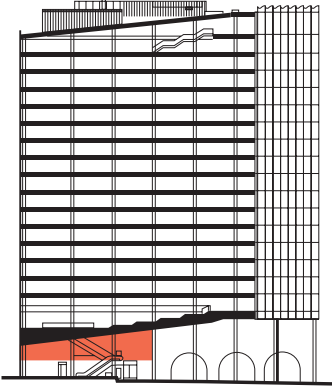
# GROUND FLOOR



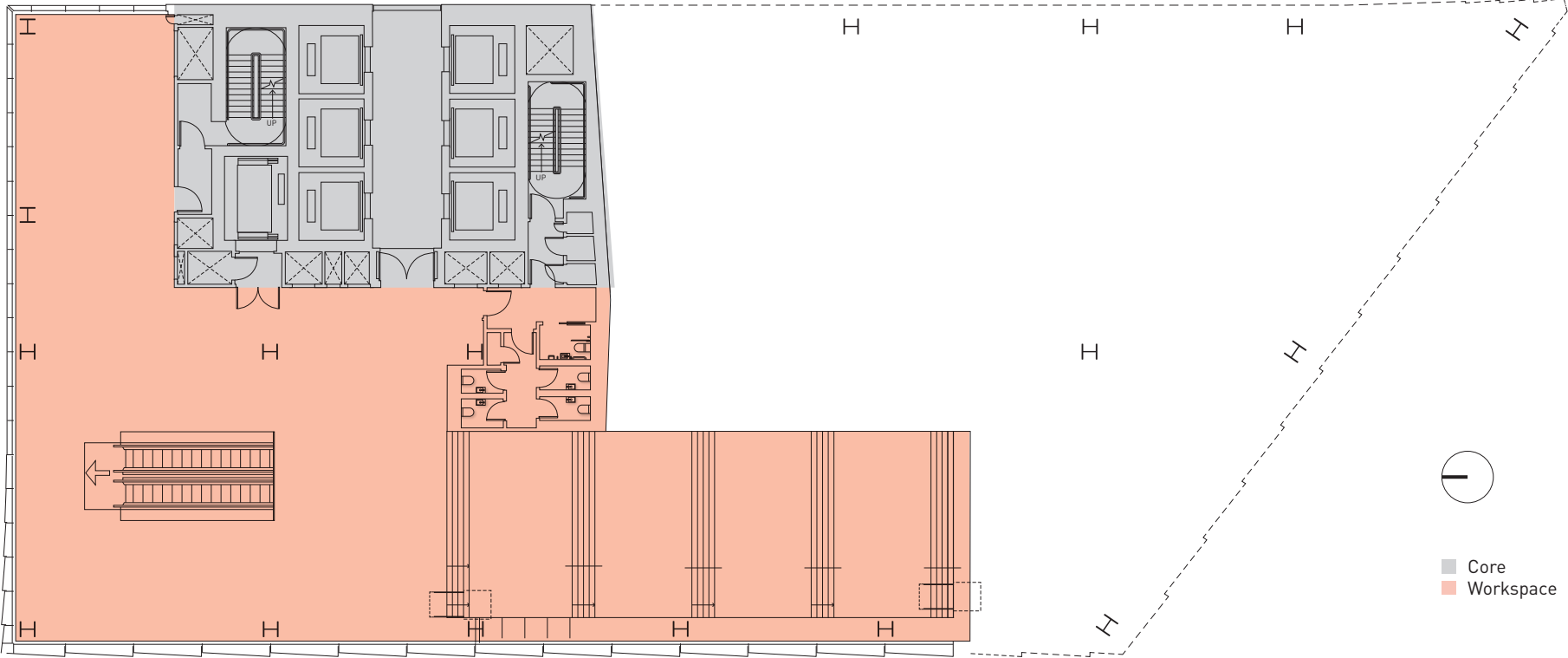
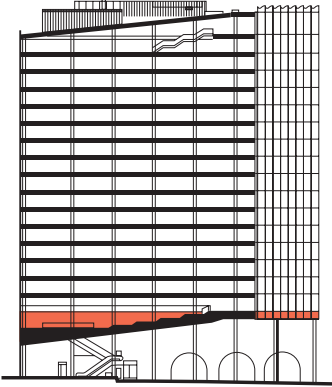
Blackfriars Road

- Core
- Reception
- Public Realm
- Arches

# LEVEL 1



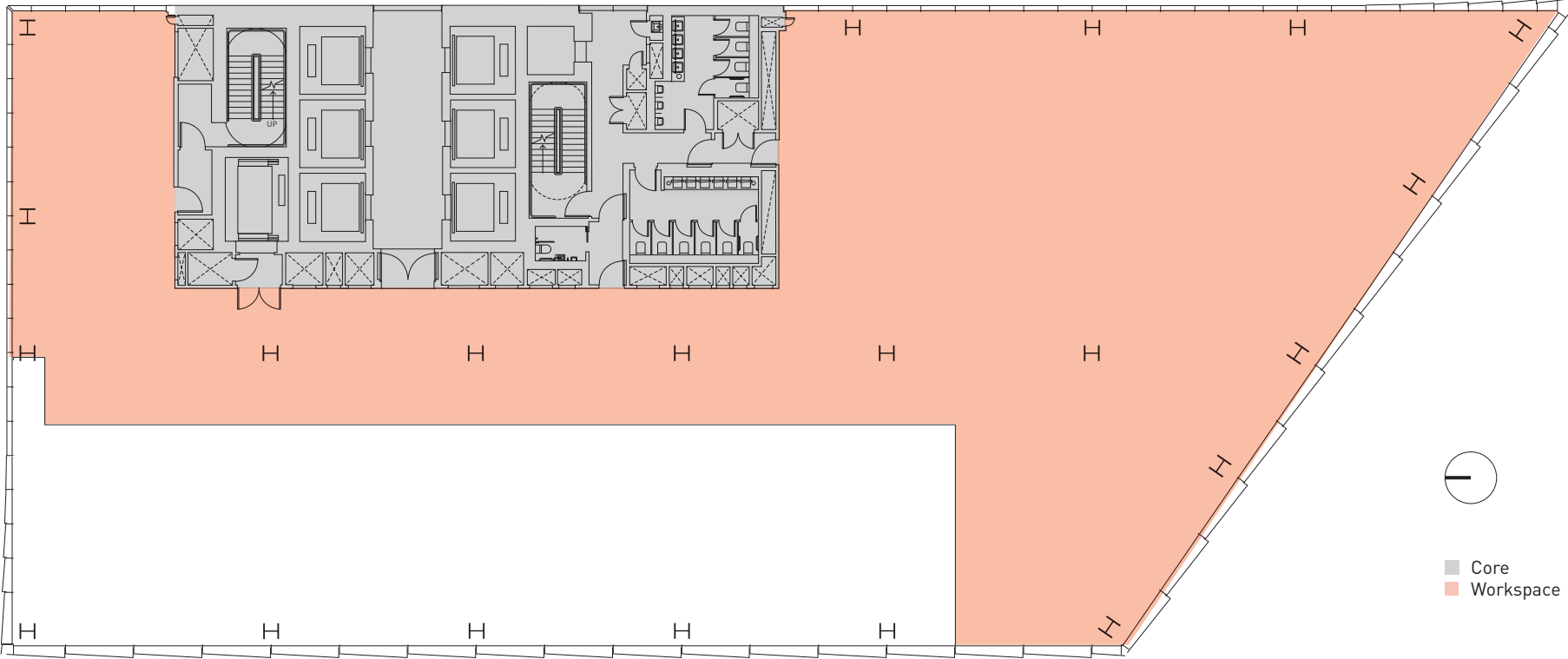
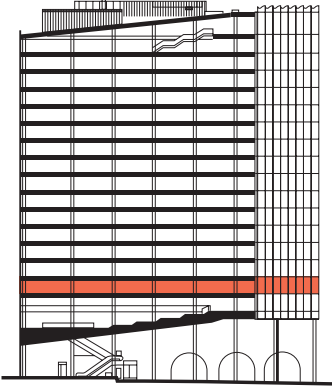
# LEVEL 2



Core  
Workspace

Net Internal Area 6,121sqft

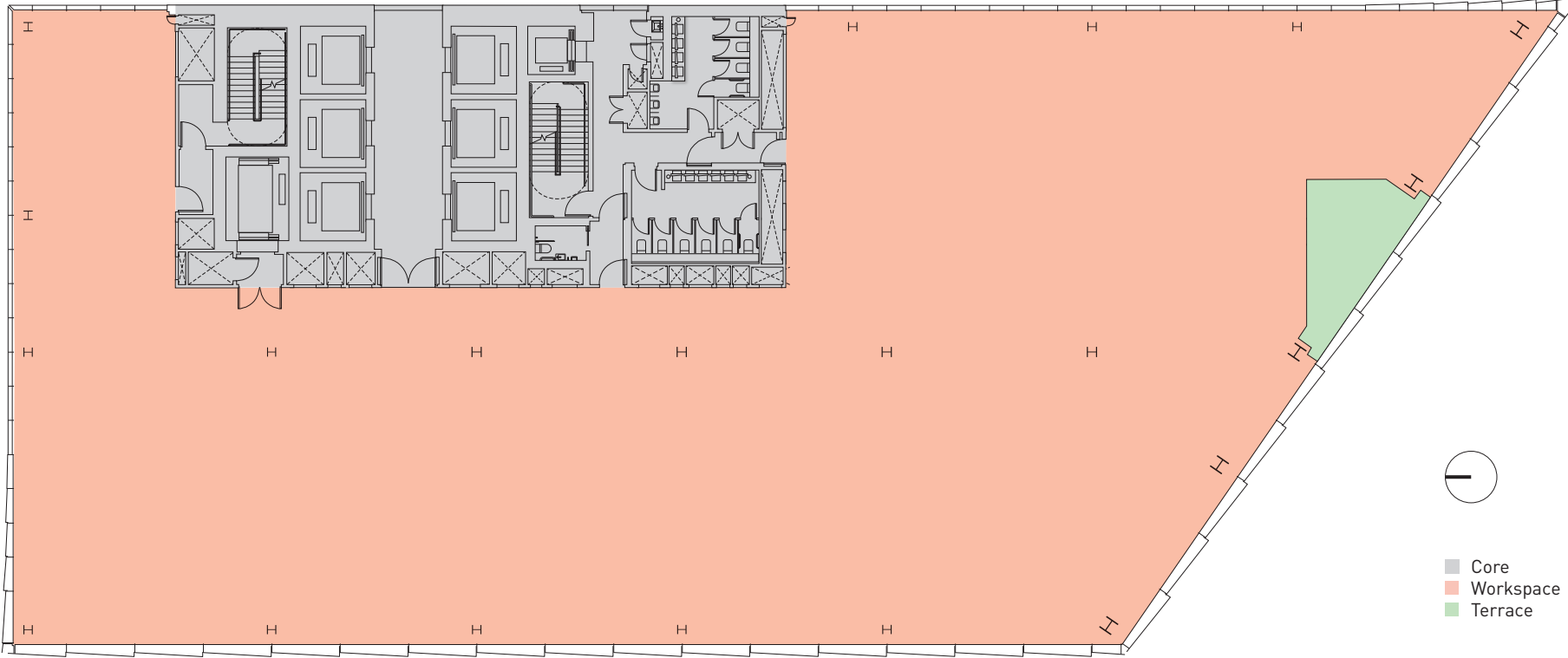
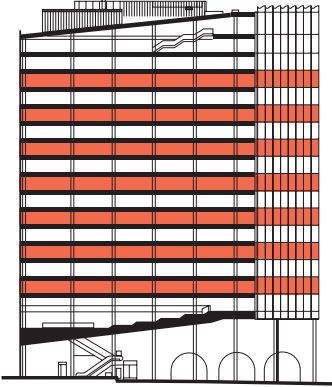
# LEVEL 3



■ Core  
■ Workspace

Net Internal Area 9,508sqft

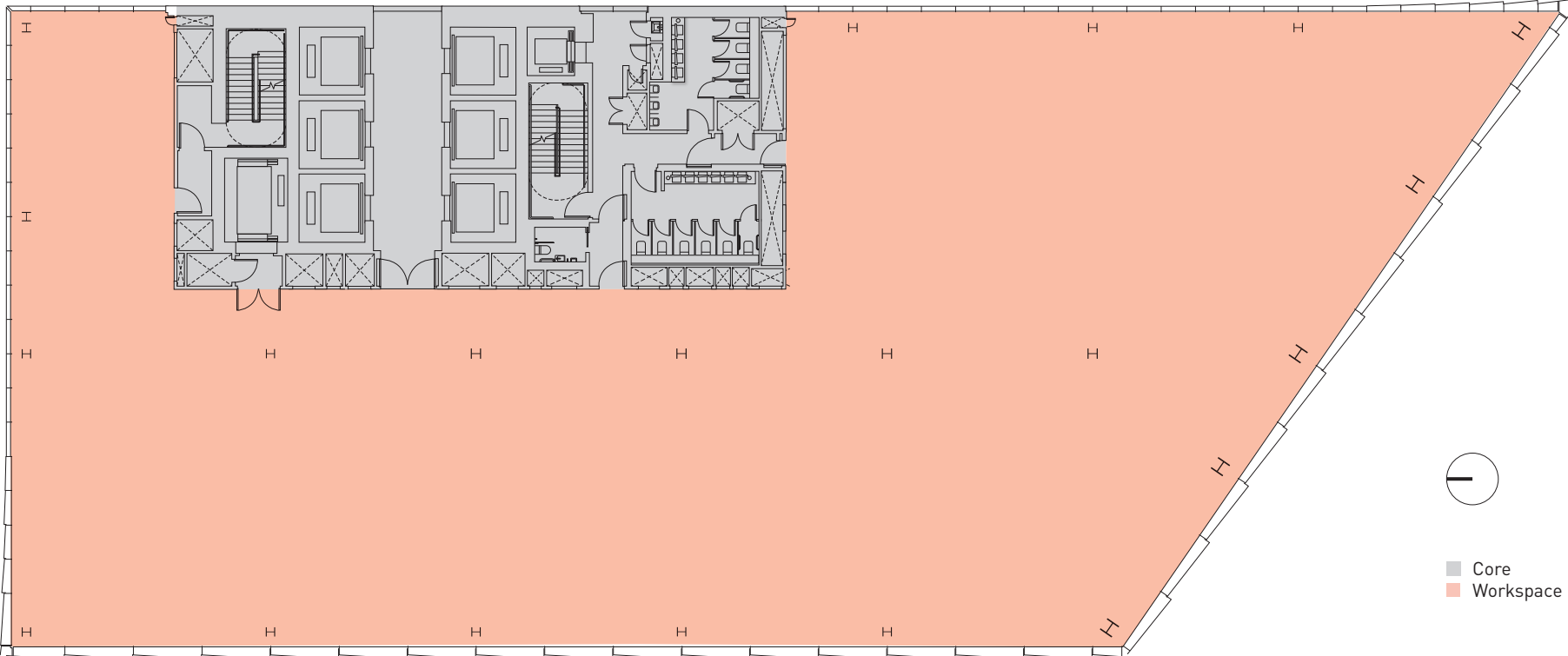
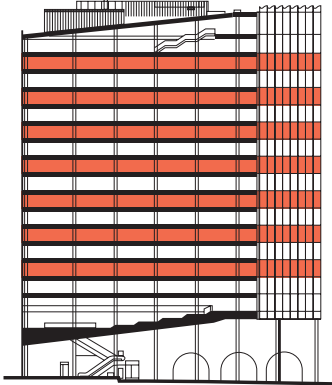
# TYPICAL FLOOR WITH TERRACE



- Core
- Workspace
- Terrace

Net Internal Area	13,522sqft
Terrace	260sqft

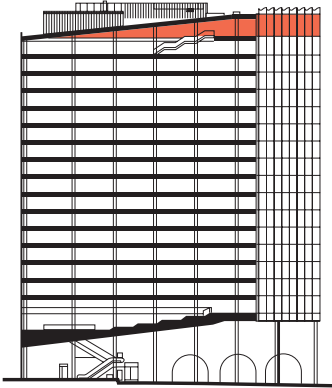
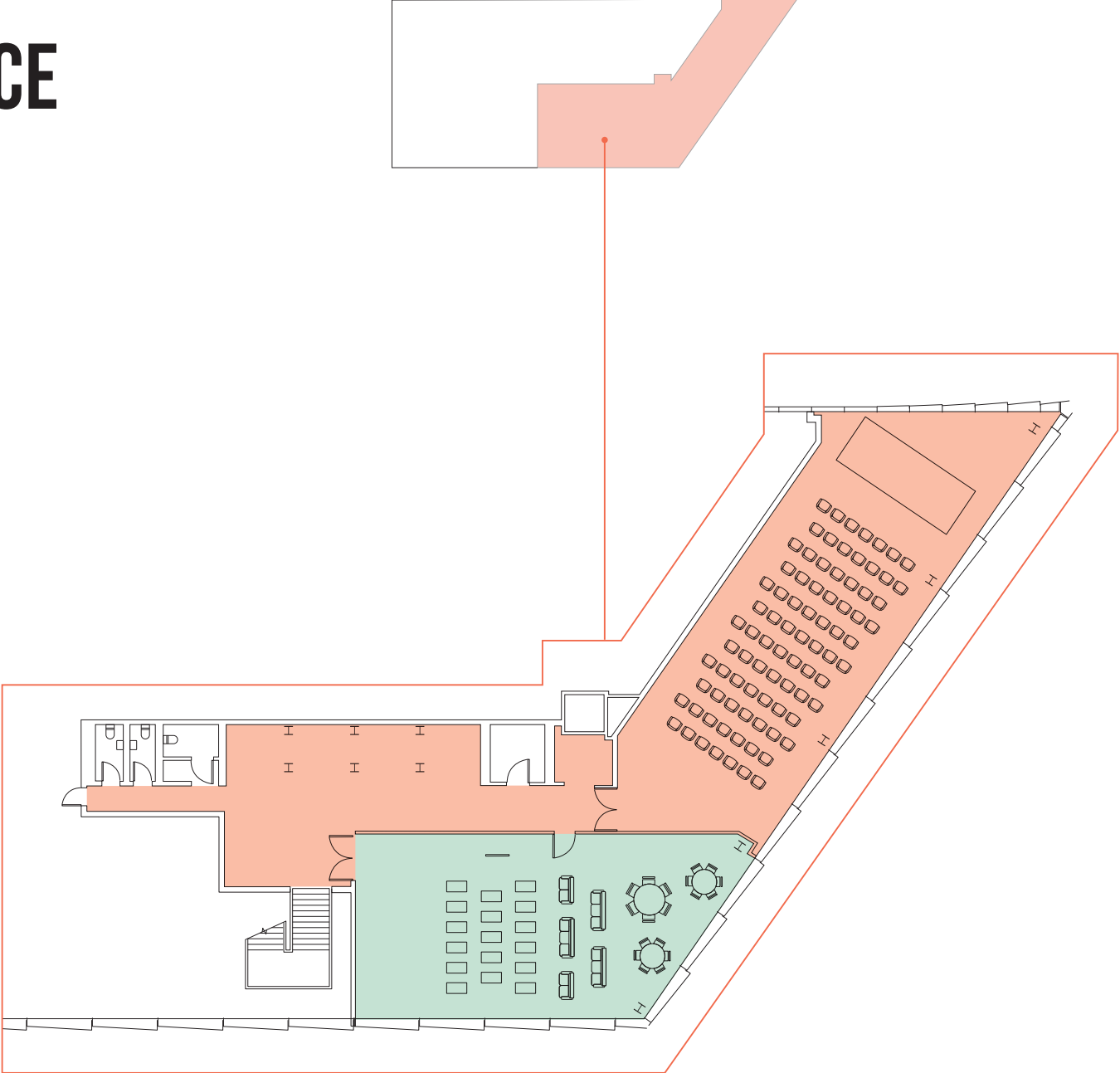
# TYPICAL FLOOR WITHOUT TERRACE



■ Core  
■ Workspace

Net Internal Area 13,796sqft

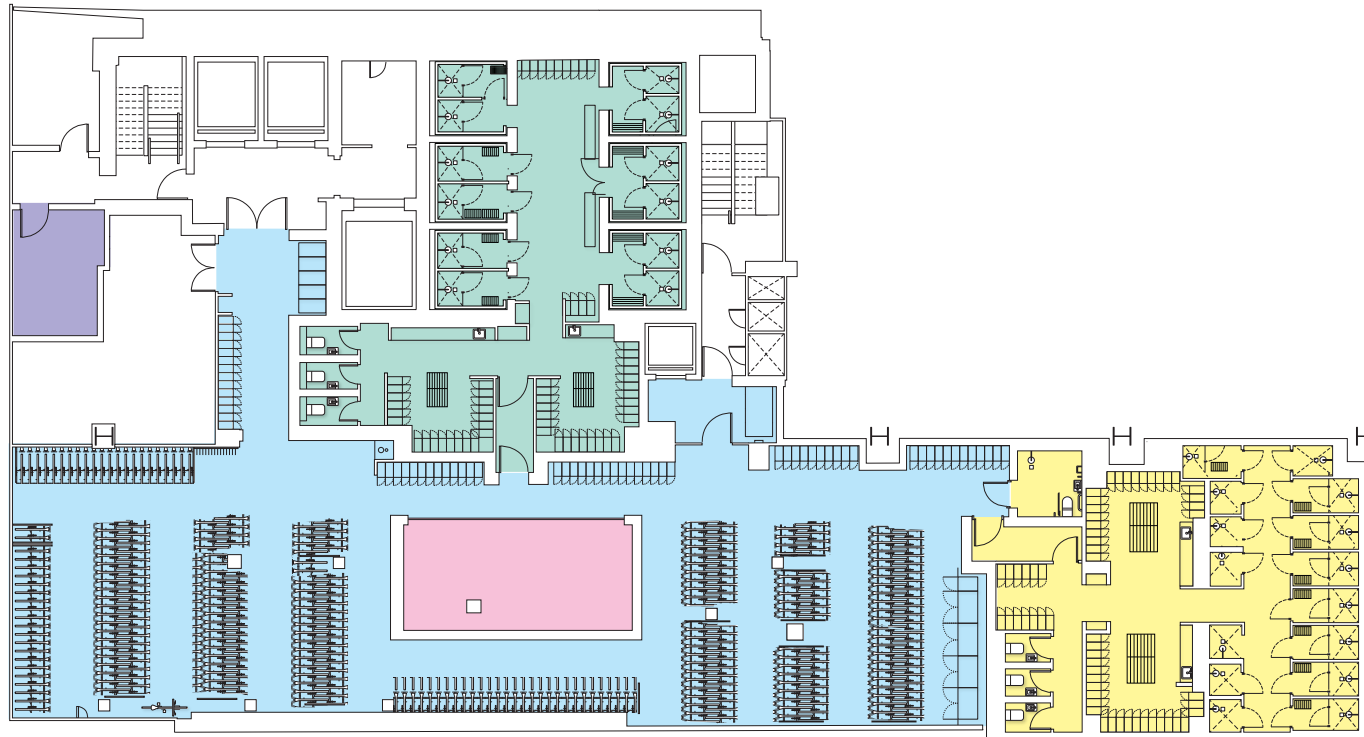
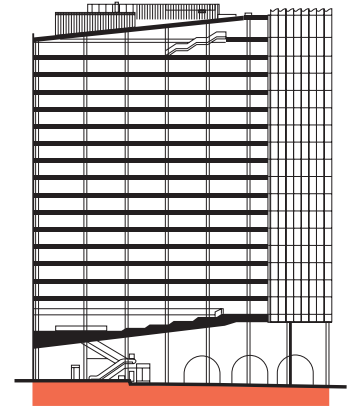
# LEVEL 19 WORKSPACE TERRACE



Workspace  
Terrace

Net Internal Area	3,022sqft
Terrace	1,438sqft

# END-OF-TRIP FACILITIES



- 330 cycle spaces
- 372 lockers
- 5 drying lockers
- 27 folding bike lockers
- Warm down / exercise room
- Water refill station
- E-scooter / bicycle charging points
- 28 showers



- Cycle Storage
- Male changing
- Female changing
- Exercise room
- Delivery / dry-cleaning lockers