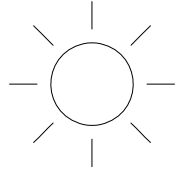
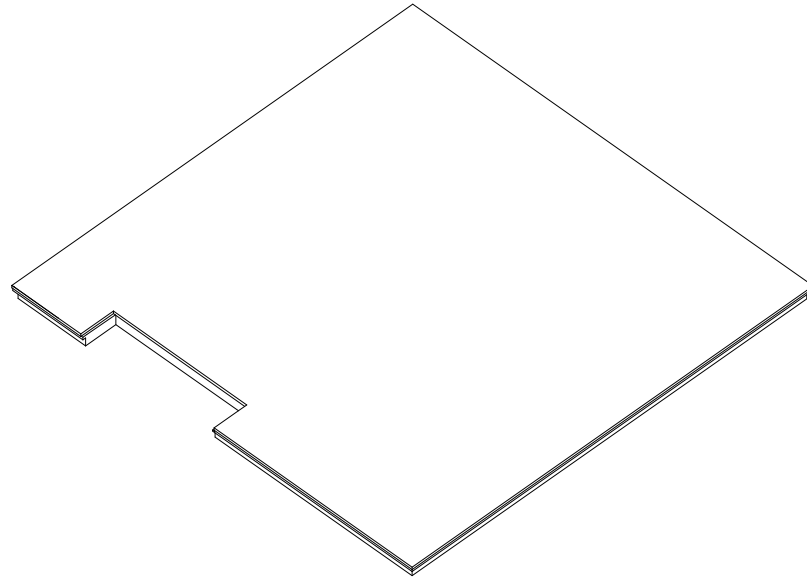
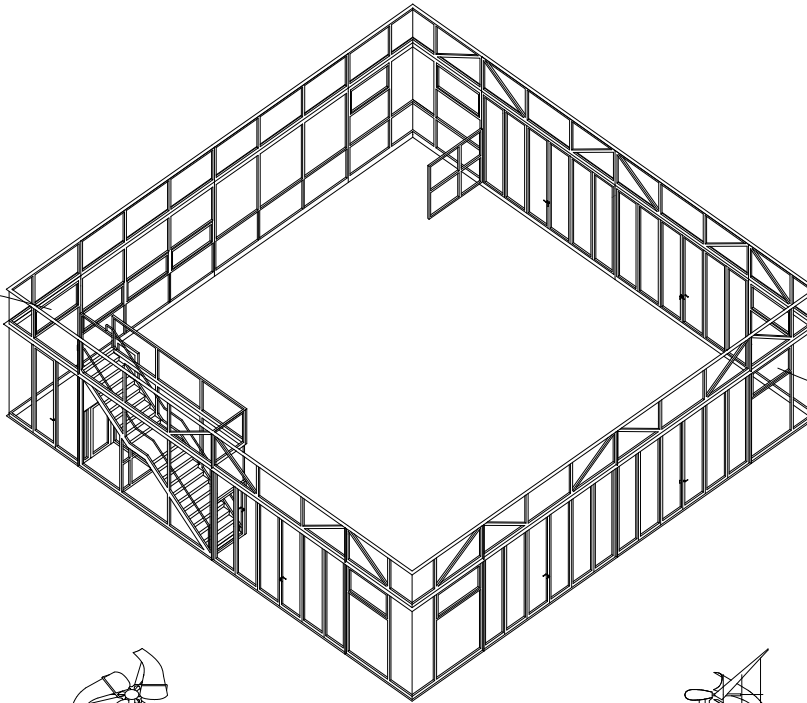


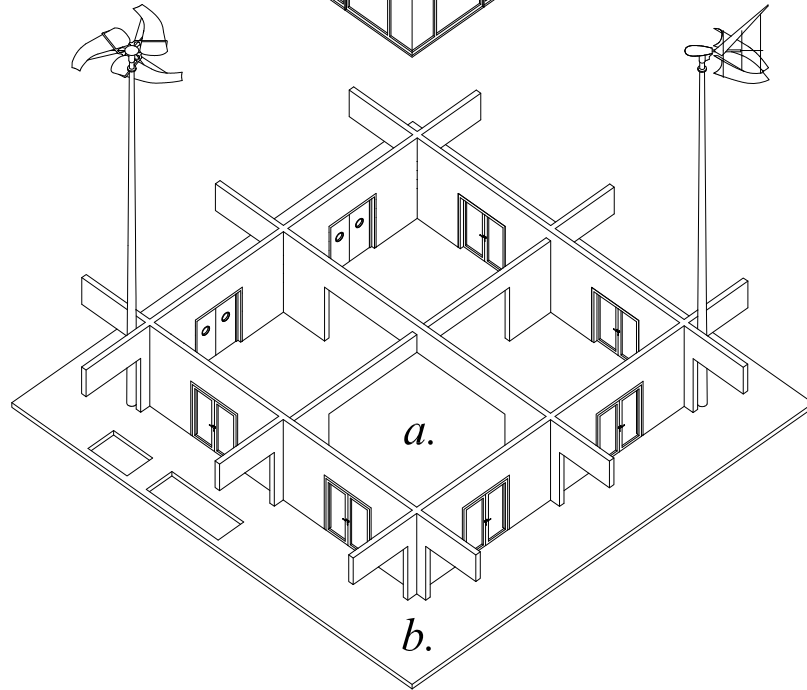
Water\_ is collected and used in lavatories



Sun\_ provides solar gains in the glass passage

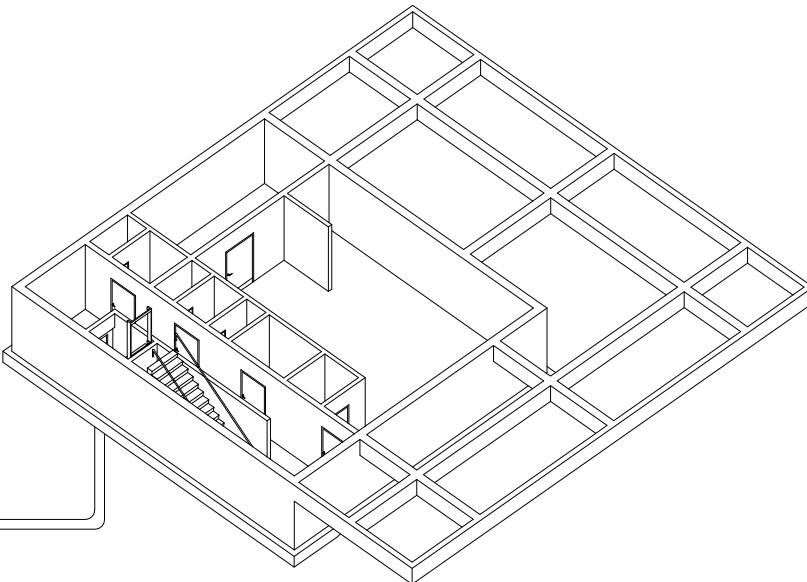


Wind\_ is transformed into energy (pending realisation)



a. Heated space (Geothermal Heat Pump underfloor heating CO<sup>2</sup> ventilation heat recuperation).

b. Non-Heated space (Trans Ventilation by windows and/or doors Solar gains heating serves as insulation layer double skin air).



Earth\_ is used for temperature control by means of a Geothermal Heat pump

