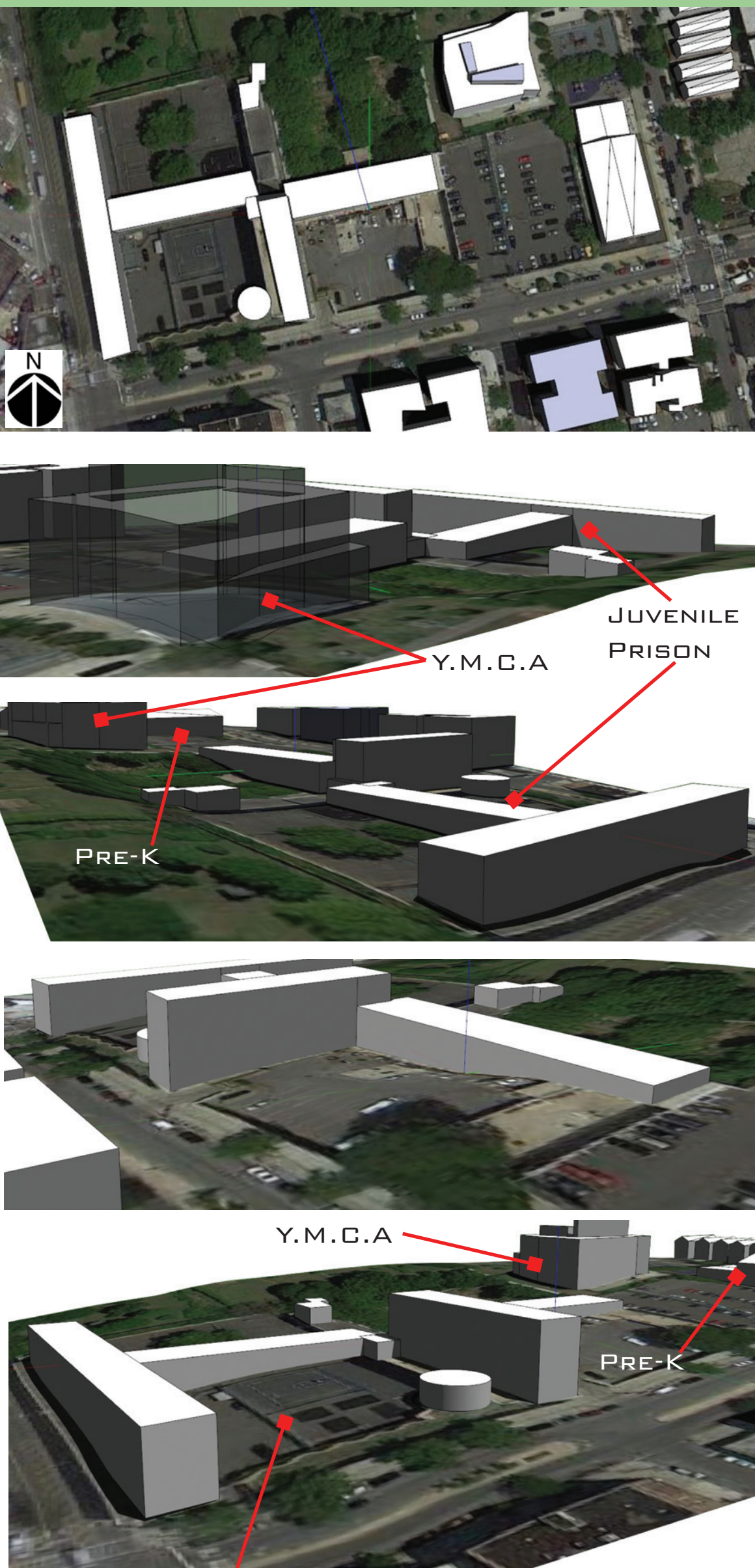


# Biophilic BRONX

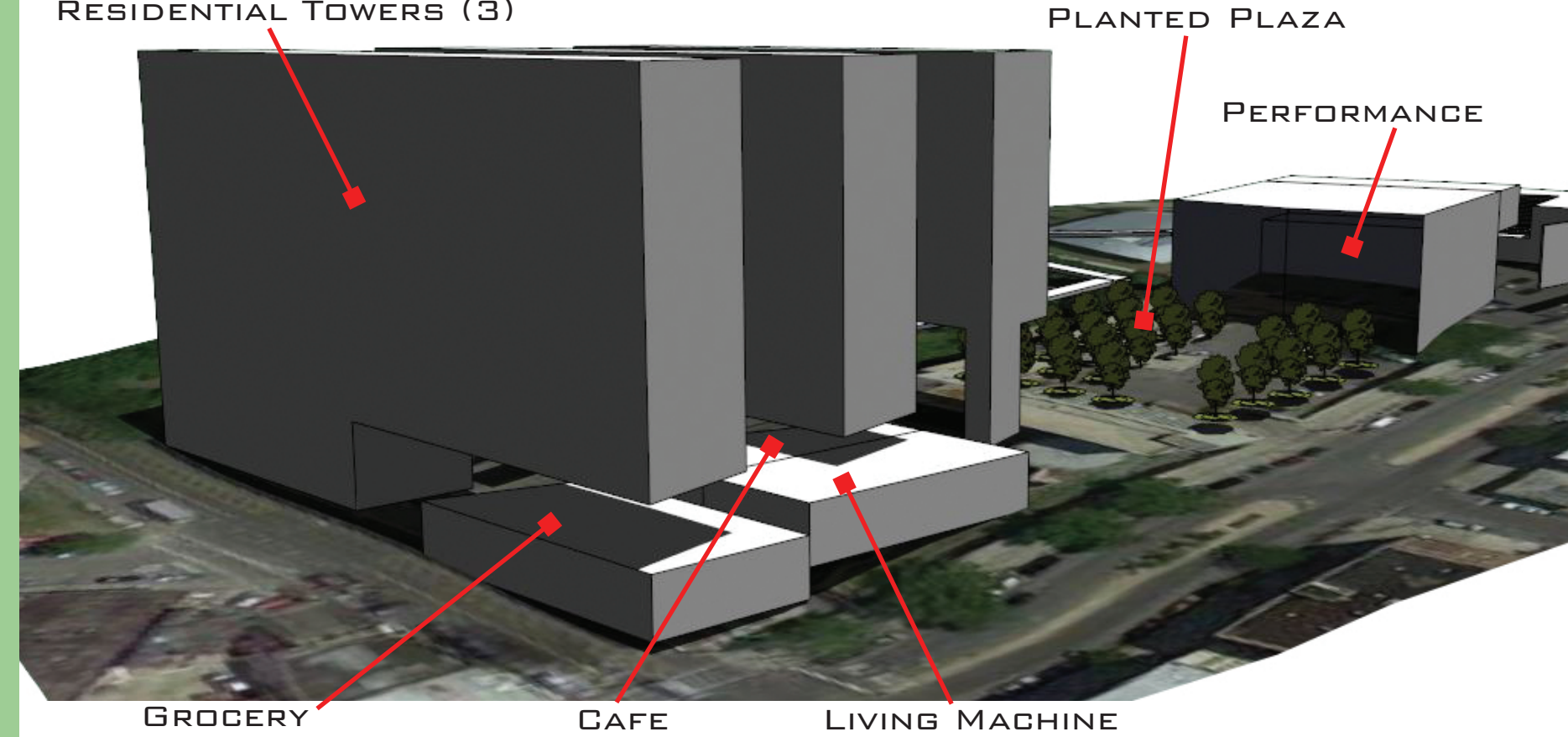
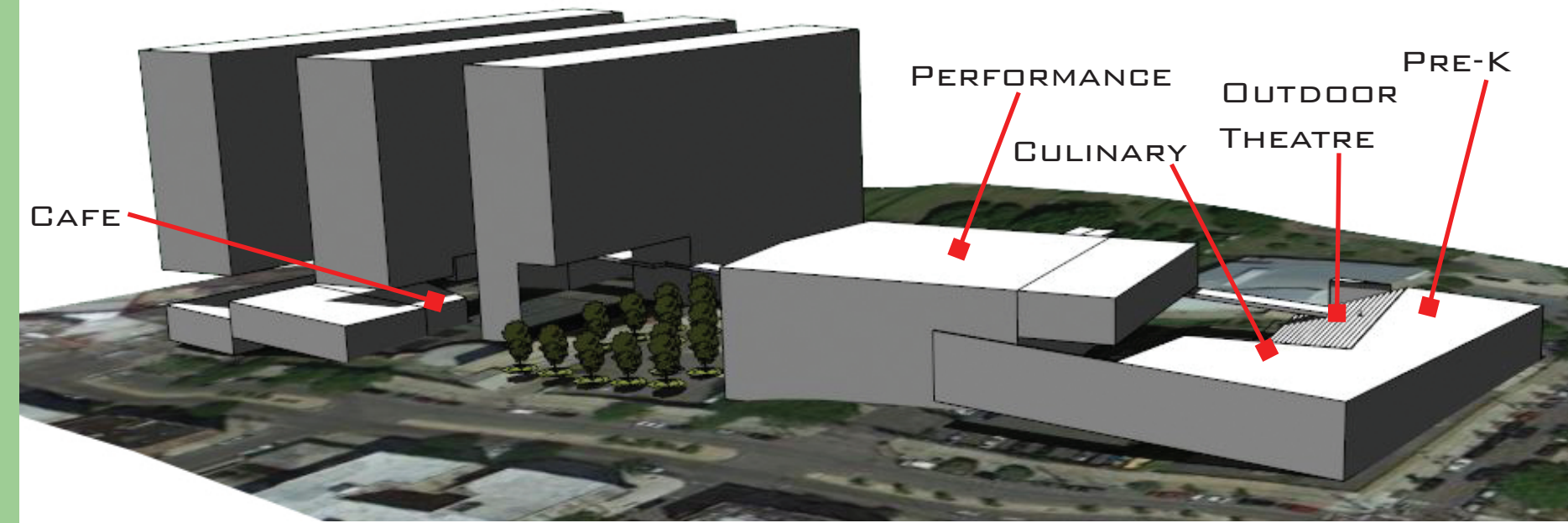
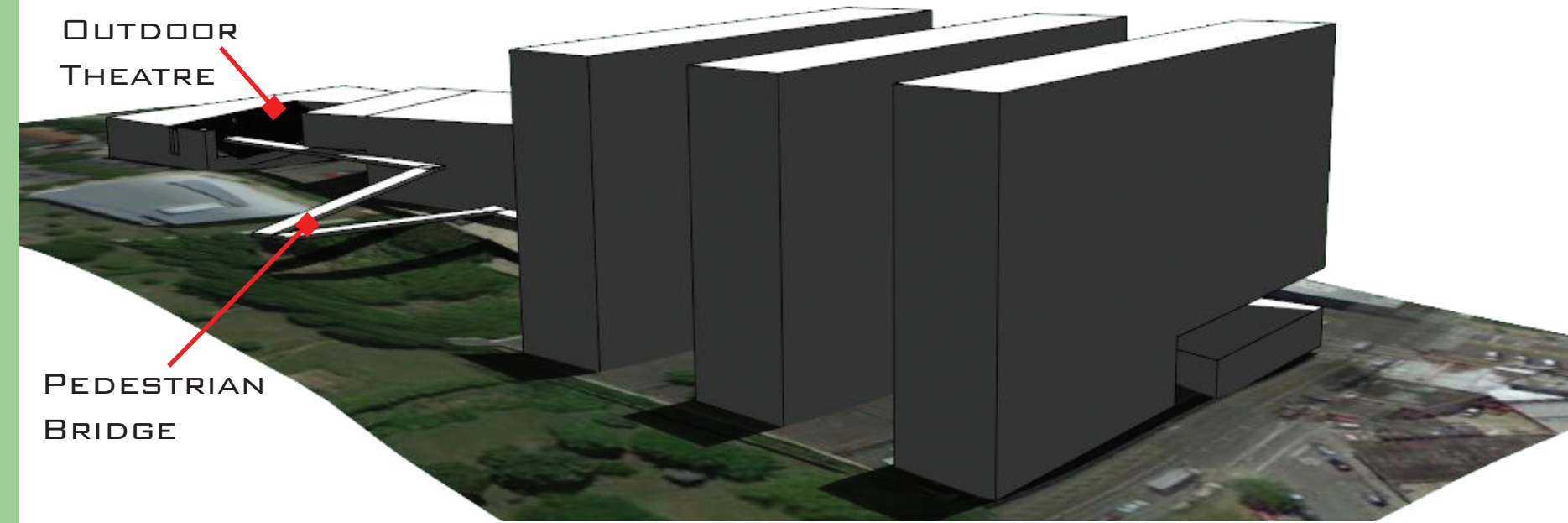
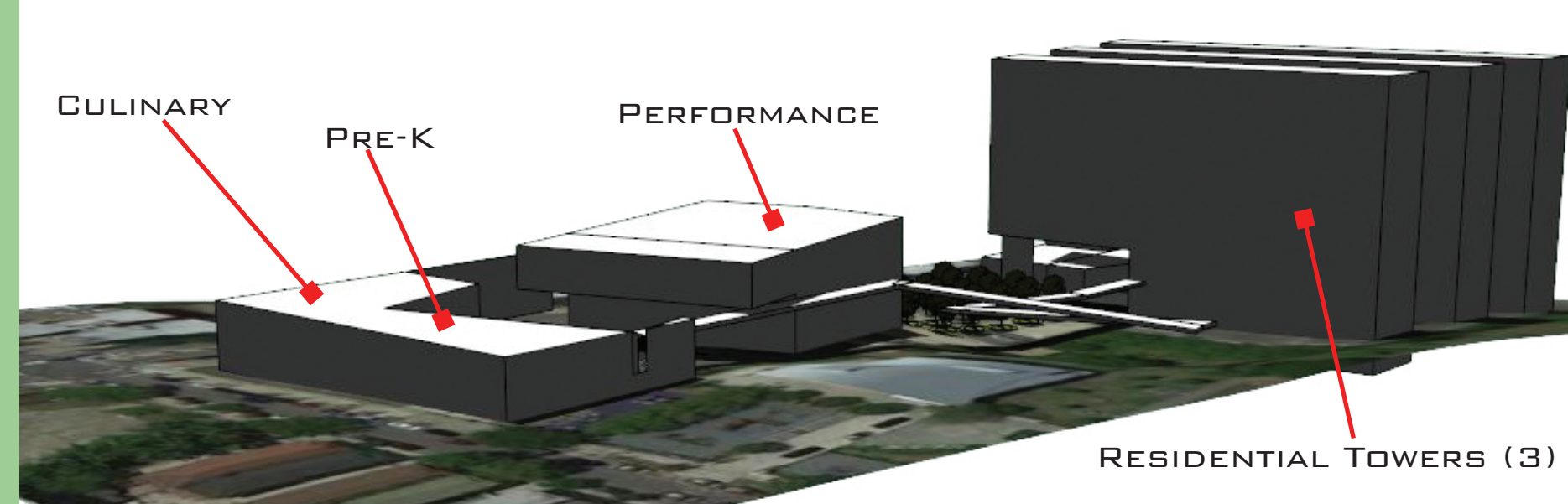
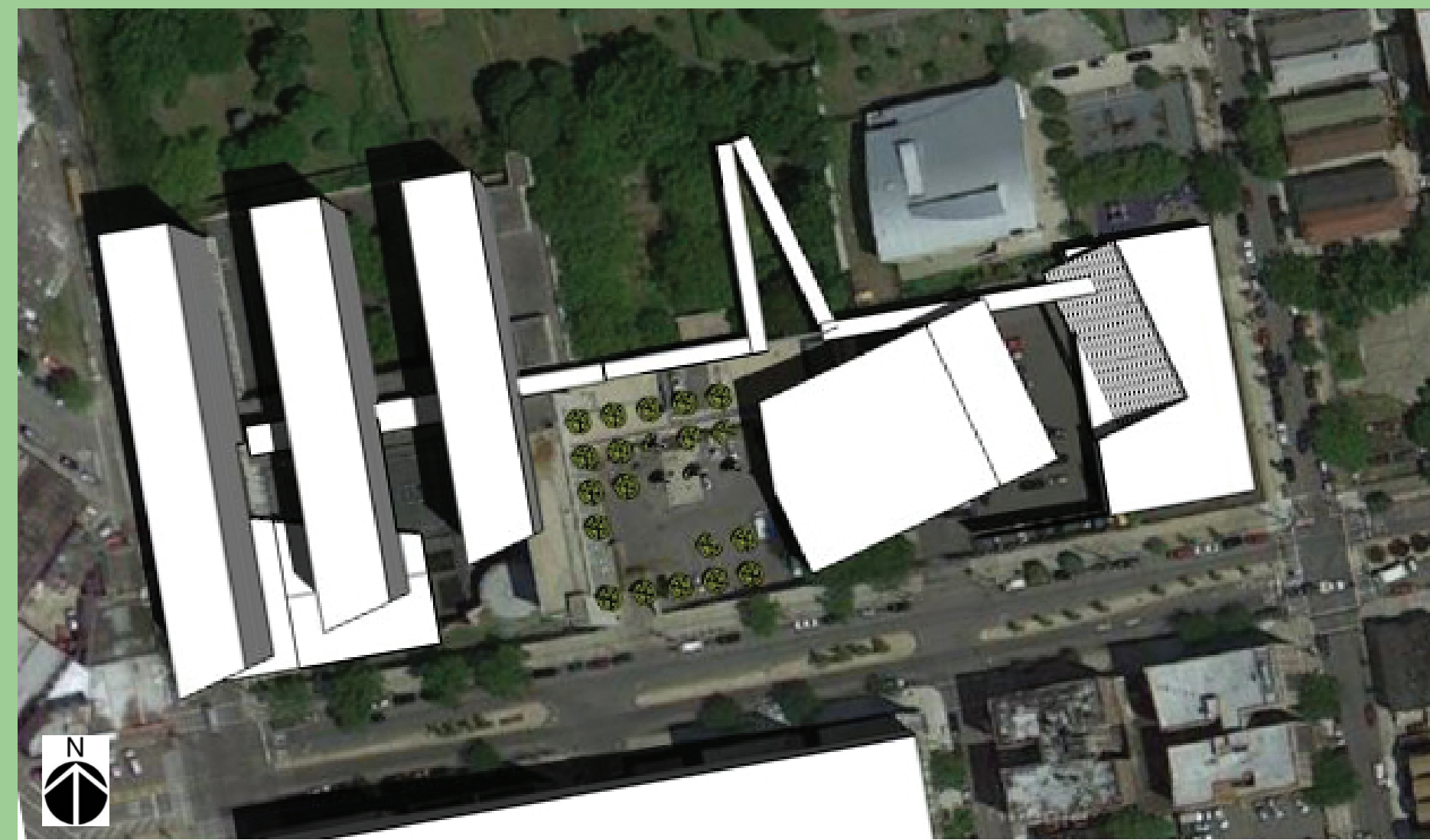


THE GOAL OF THE PROJECT WAS TO SATISFY A MULTISECTORAL, REGENERATING AN ABANDONED SITE WITH A LARGE SEVEN-STORY JUVENILE PRISON BUILDING, AND A SMALL PRE-K SCHOOL. THE ORIGINAL IDEAL SOLUTION WAS TO REUSE AS MUCH OF THE EXISTING STRUCTURE OF THE DETENTION CENTER AS POSSIBLE, OR AT LEAST SALVAGE IT FOR NEW CONSTRUCTION. HOWEVER, EVEN THROUGH THE ITERATIONS OF THE MASSINGS WERE KEPT SIMPLE, THE NEW "BUILDING" ORIENTATIONS MADE IT DIFFICULT TO PREVENT DEMOLITION WORK. THEREFORE, IT WAS DECIDED THAT IT WOULD NOT ONLY BE EASIER TO DEMOLISH THE EXISTING STRUCTURES, BUT TO REGRADE THE WHOLE SITE TO ACCOMMODATE FOR THE MUCH ANTICIPATED UNDERGROUND PARKING GARAGE THAT WILL ALSO BE PROPOSED.

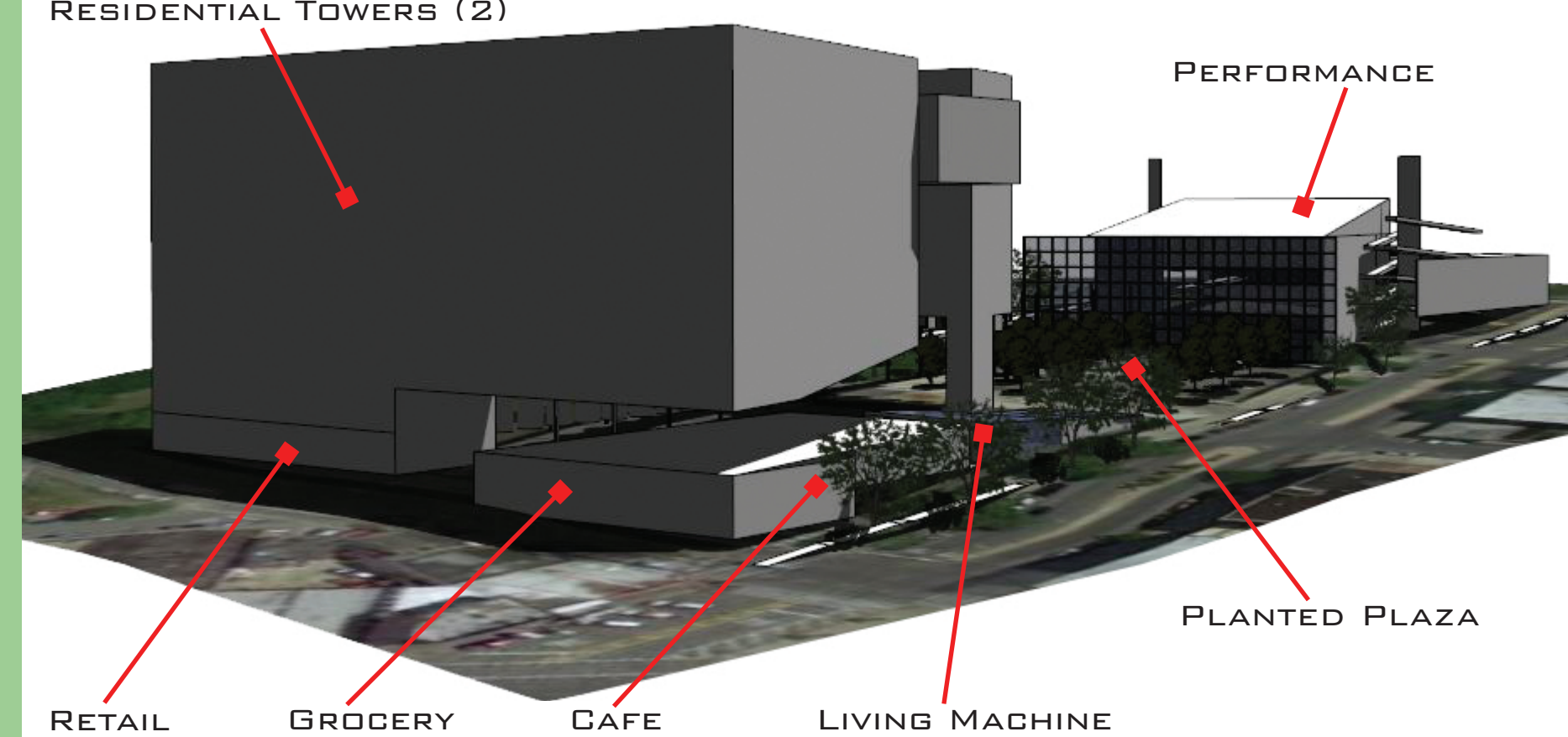
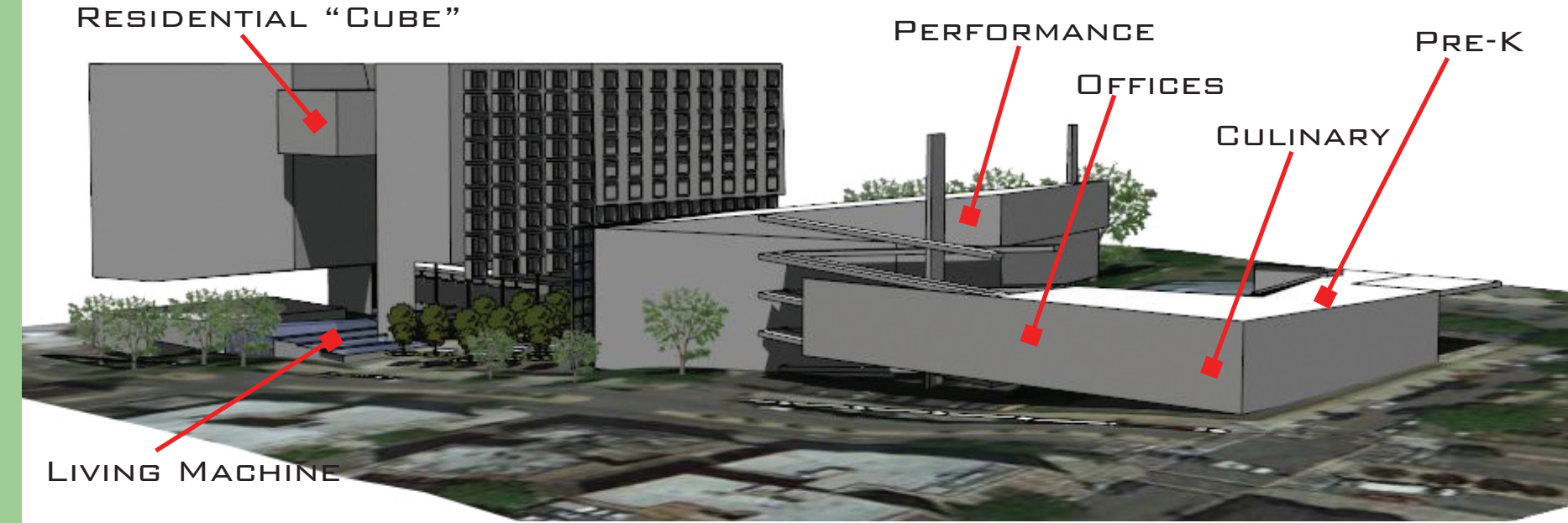
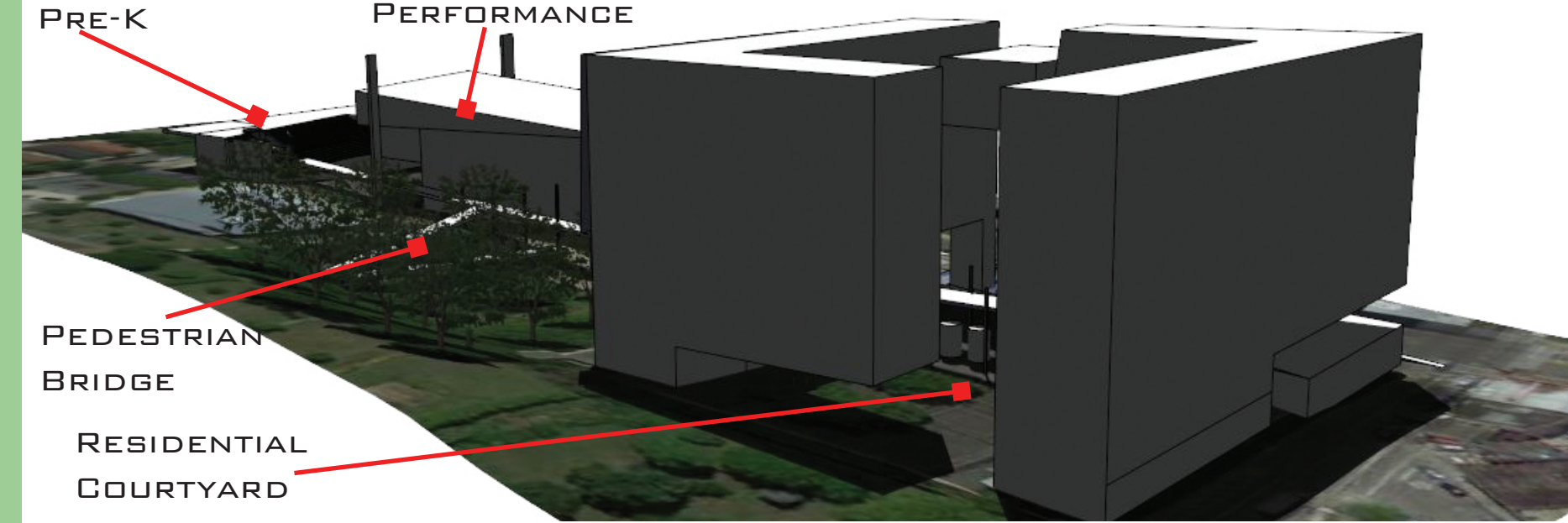
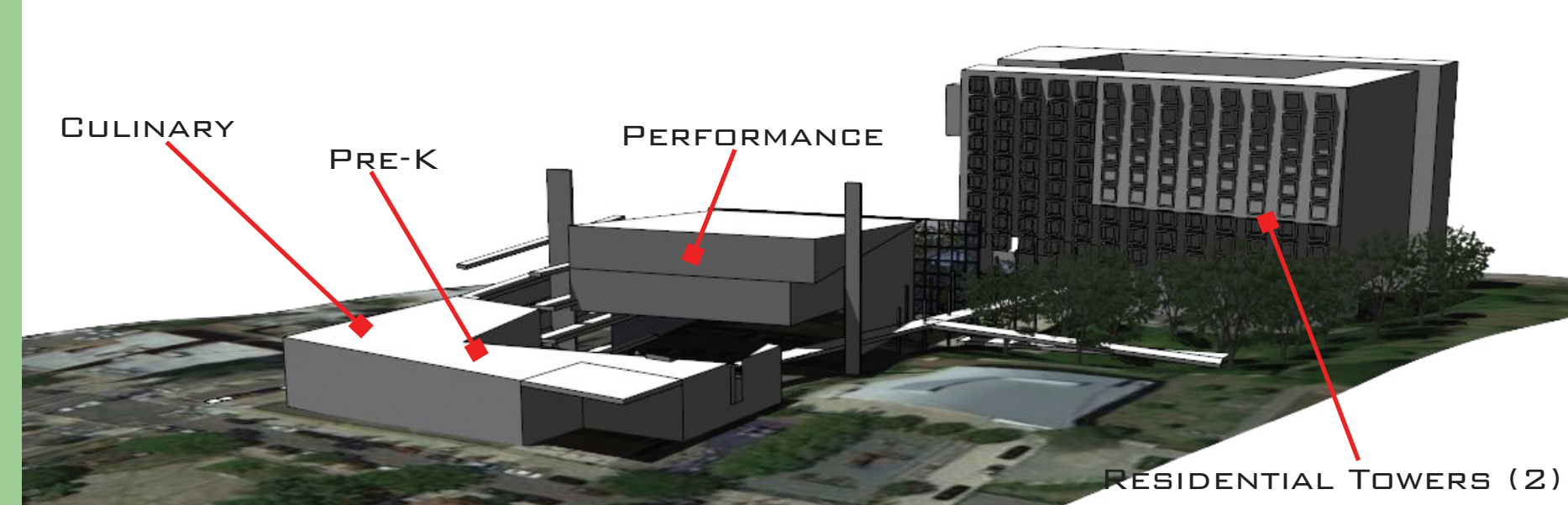
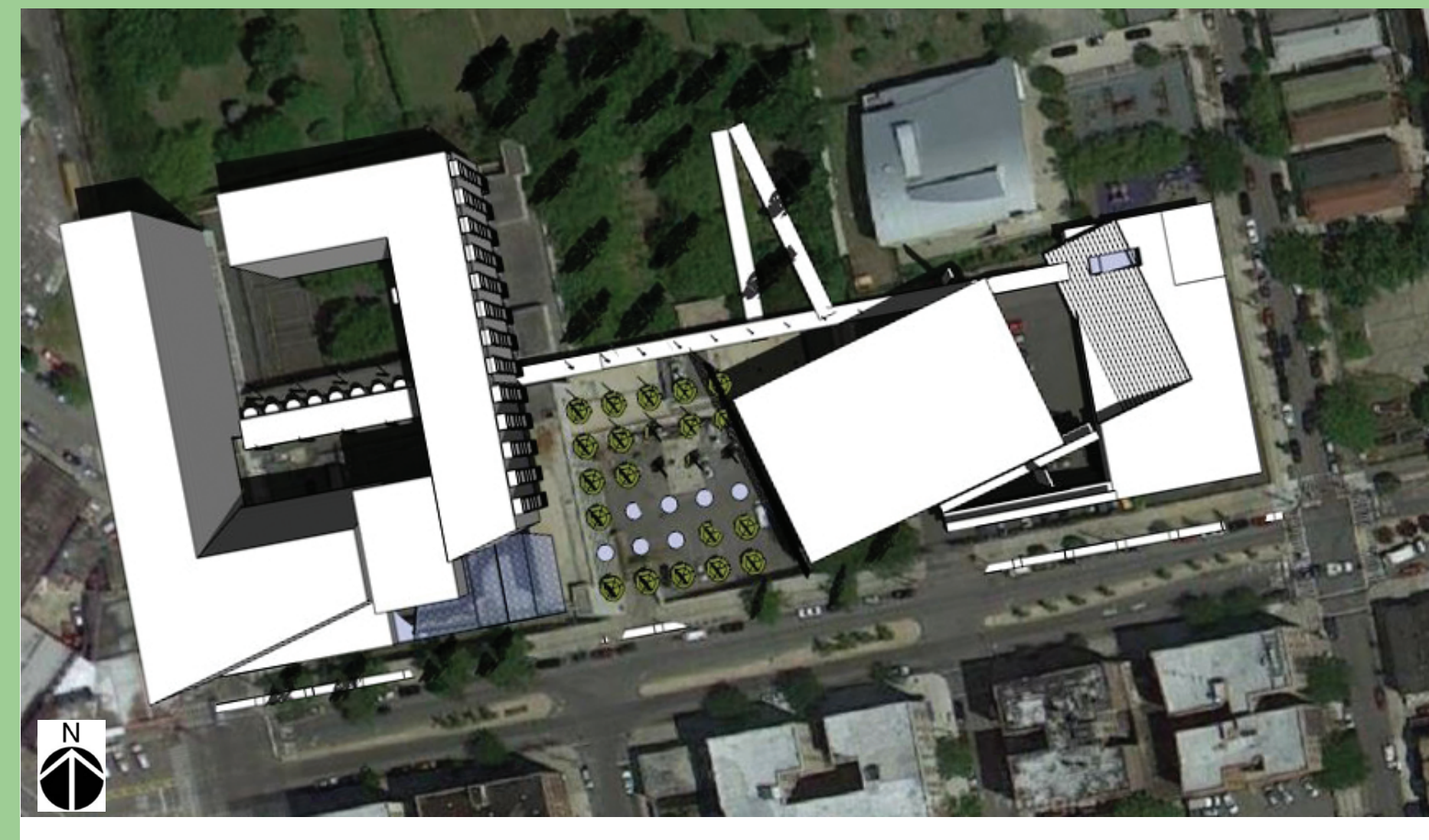
ITERATION 1:  
THREE "LINEAR" RESIDENTIAL TOWERS AT TEN STOREYS EACH WOULD HOUSE 150 UNITS. THE TOWER ALONG TIFFANY STREET WOULD CANTILEVER OVER THE GROCERY STORE. THE MIDDLE TOWER WOULD CANTILEVER OVER THE CAFE AND LIVING MACHINE. THE THIRD WOULD HAVE OPEN PERSPECTIVE TO THE "PLANTED PLAZA" AND PERFORMANCE BUILDING (AS SHOWN RIGHT.) THE BUILDING ALONG MANHATTAN STREET WOULD HOUSE THE CULINARY PROGRAM AND THE PRE-K SCHOOL WITH AMPHITHEATRE SEATING ON THE ROOF FACING THE PERFORMANCE BUILDING ENTRY COURTYARD.

ITERATION 2:  
TWO "L" SHAPE TEN-STOREY TOWERS WOULD FORM A SQUARE SYSTEM WITH AN OPEN, YET PRIVATE CENTRAL COURTYARD FOR RESIDENTS. A "CUBE" WOULD ACT AS A KEYSTONE FOR THE TOWERS TO OFFER A GRAND COMMUNITY SPACE WITH A BEAUTIFUL VIEW OF THE OCEAN AND MIDTOWN MANHATTAN. THE CANTILEVER EFFECT WOULD STILL ENCLOSE THE GROCERY, CAFE, AND LIVING MACHINE. THE PERFORMANCE BUILDING WOULD STILL BE SEPARATED BY A "PLANTED PLAZA", BUT THE ROOFTOP THEATRE SEATING IS NO LONGER PROPOSED, AND THE PRE-K/CULINARY BUILDING IS LESS INTEGRATED SOCIALLY, BUT MORE STRUCTURALLY NOW WITH A RAMP THAT ALLOWS FOR ROOFTOP ACCESS TO THE PERFORMANCE BUILDING'S GREEN ROOF.

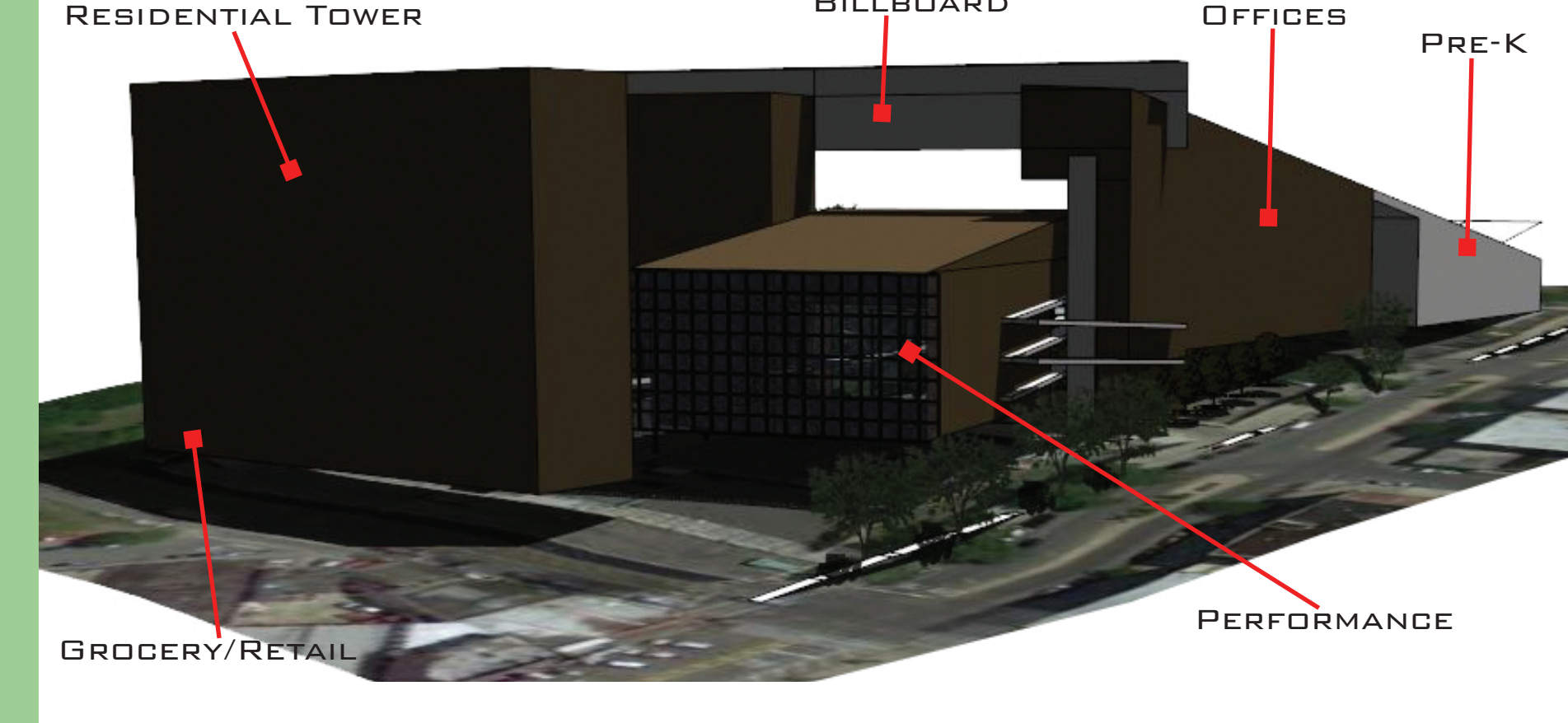
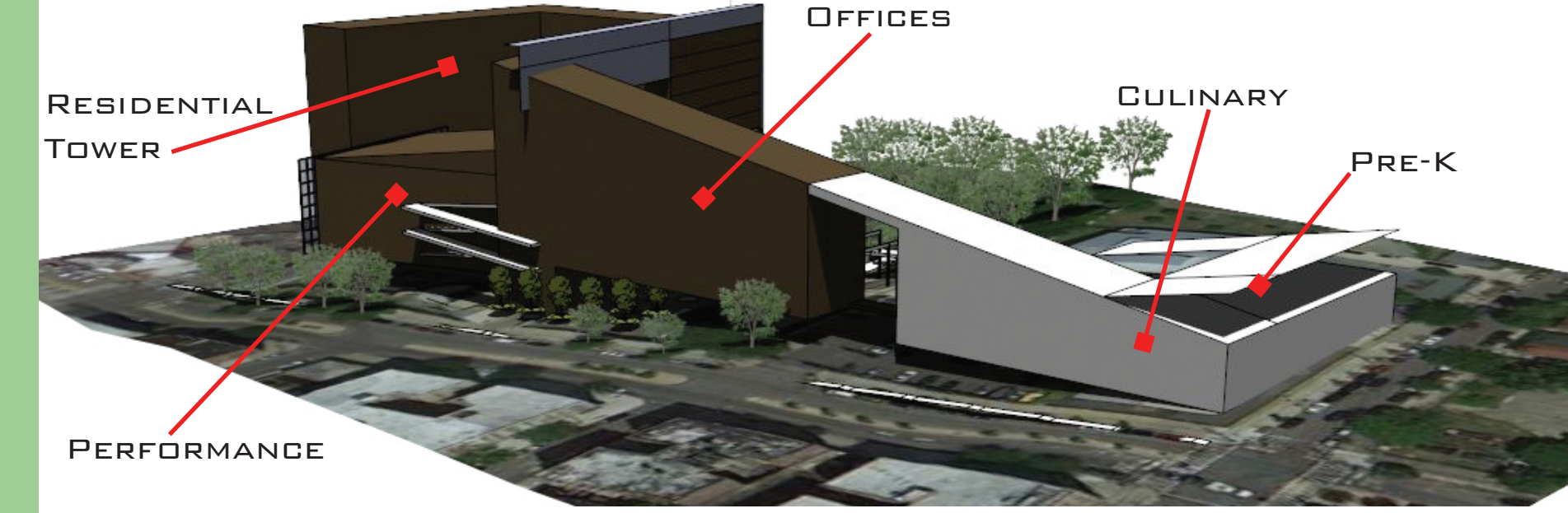
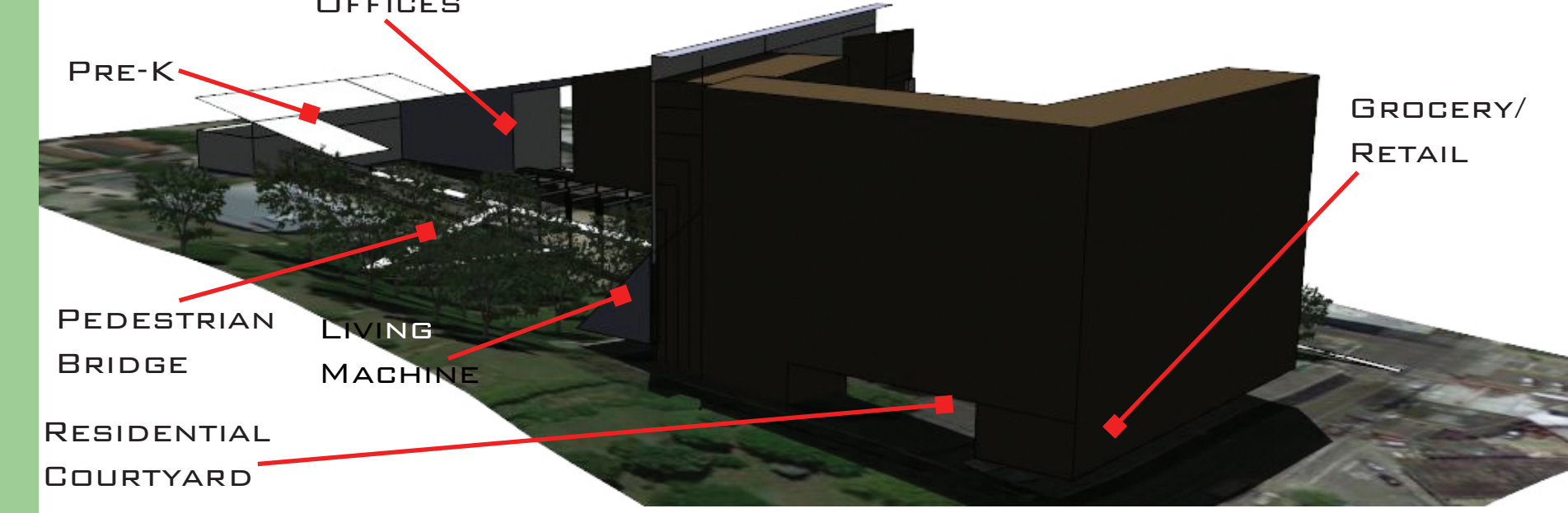
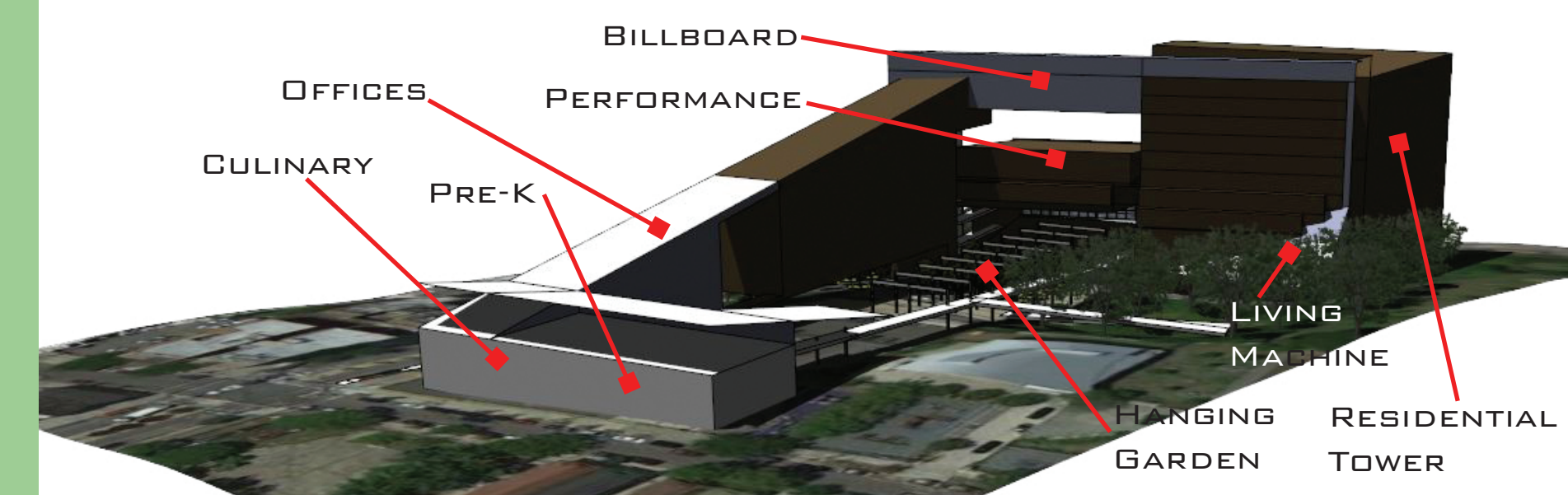
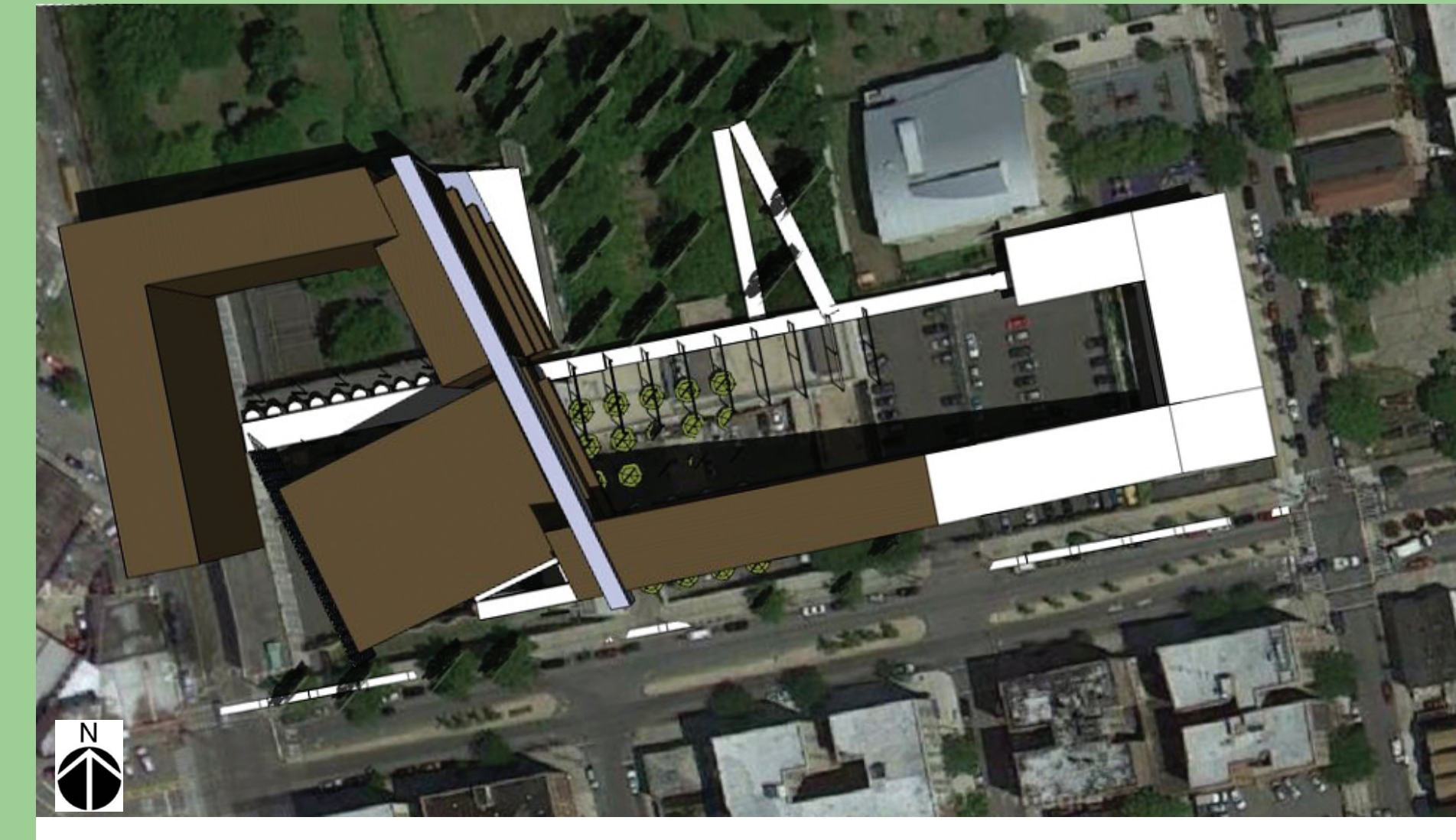
ITERATION 3:  
ONE CONTINUOUS FORM FROM TEN STOREYS TO TWO WOULD SNAKE THE ENTIRE SITE IN ALMOST A "FIGURE OF EIGHT" ORIENTATION, REMAINING NARROW FOR MAXIMUM DAYLIGHTING, WHILE PRESENTING THE INVERSE TO THE TOPOGRAPHY IN ELEVATION. AS THE TERRAIN LEVEL INCREASES, THE BUILDING WOULD DECREASE AND VICEVERSA. THE PROGRAM REMAINED THE SAME, BUT CHANGED LOCATIONS (SEE DIAGRAMS RIGHT). THIS FINAL SCHEME WAS ABOUT CREATING PUBLIC GREEN SPACES, AS WELL AS MAKING THE INSIDES TRANSPARENT, EVEN THOUGH THE FORM IN SCHEMATIC APPEARS MONOLITHIC. USING THE WHOLE SITE INTEGRATIVELY WAS MUCH MORE ADVANTAGEOUS, BECAUSE IT BECOMES SAFER, AND A MULTISENSORY COMMUNITY WITHIN ITSELF.



ITERATION 1



ITERATION 2



ITERATION 3