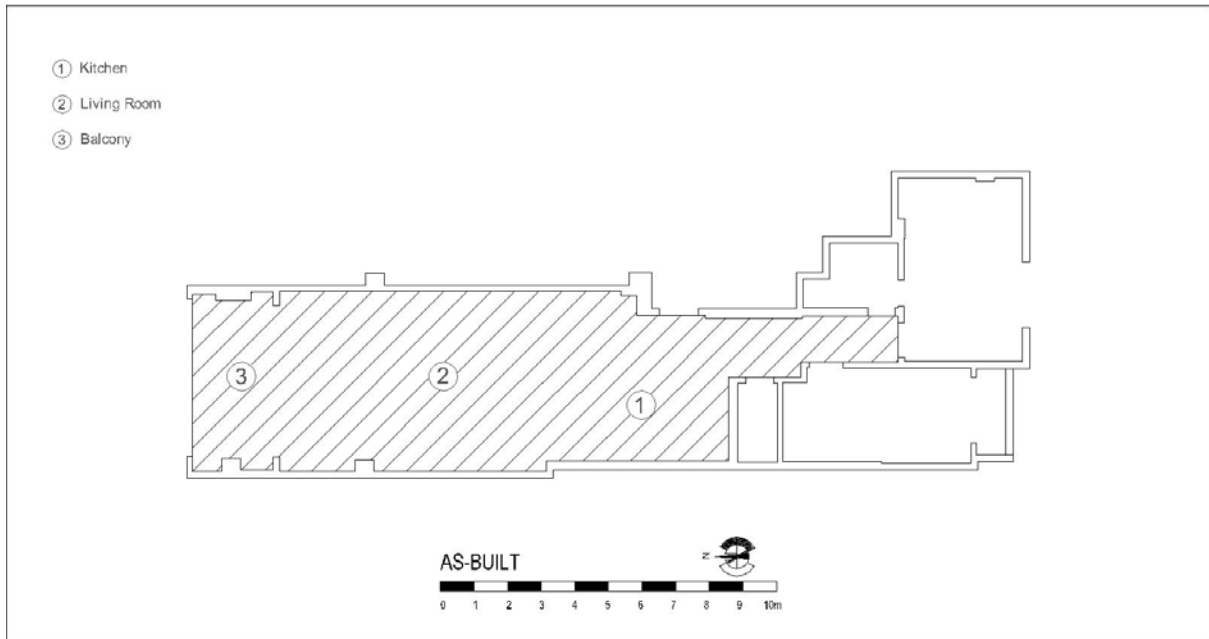


AURA PROJECT

Design Process:

First, Initially, the dimensions of the project were measured and the plan of the as-built was drawn.



The project was then analyzed in terms of lighting, ventilation, view, installation, and structure. The recorded results were that the polar wind travels from the sea to the shore. Moreover, direct sunlight does not exist due to the location of the window which is in the north. Also, the view of the unit is towards the sea.



Furthermore, in terms of installation, two P-traps exist under the ceiling of this unit.



This unit has a concrete structure and the ceiling contains ceiling beam hangings. Finally, the plan of the project is rectangular shaped.



In the design of the balcony, glass fences were used so the view of the sea does not get blocked. For safety, steel handrails were used at the top of the glass fences so the tenant can see and detect the fence clearly (as glass is transparent). These steel handrails also increase the strength of the glass indirectly. It is the same case with the bottom part of the glass. In addition, the bottom part of the glass is airtight, hence it prevents the flow of water into the neighbor's balcony underneath the tenant. The glass fence is also split into three panels with gaps allowing wind to pass through them which decreases the pressure on the glass. Since the area of the balcony is small, it was decided that it should not be furnished, as this would block the view.



When designing the living room, due to its limited width, one set of sofa was placed there as the way to the balcony had to be considered. White gravel stone was used below the tv table to complete the design of the wall. To create a peaceful harmonic environment, concrete tiles were used.



In the design of the kitchen, the wooden color was used to avoid an overall neutral environment. Hideable doors were used in the design of the cabinets to make effective use of the limited space. Since tenants stay in this unit temporarily, these hideable doors can be closed to maintain cleanliness. The kitchen island had to be designed for multipurpose uses, again due to limited space. One of these uses is cooking. Another use is as a dining table. It can also be used as a countertop. Due to the existence of two P-traps in the ceiling of the kitchen, the ceiling had to be at a lower level compared to the rest of the unit.

White color was used in the design of the bedroom doors. The handles of these doors were designed to be invisible.



This project is a design and has not been constructed. All the pictures included in this PDF were photographed by Amirali Bahmani, the designer of this project. The following pictures represent sections of the project before getting the design:



Figure 1: This is a complete view of the kitchen and the living room.



Figure 2: This is a complete view of the kitchen.



Figure 3: This is the complete view of the kitchen at another angle.



Figure 4: This picture shows a complete view of the living room.



Figure 5: This picture shows a complete view of the kitchen and a part of the living room at another angle.



Figure 6: This picture represents the TV wall.